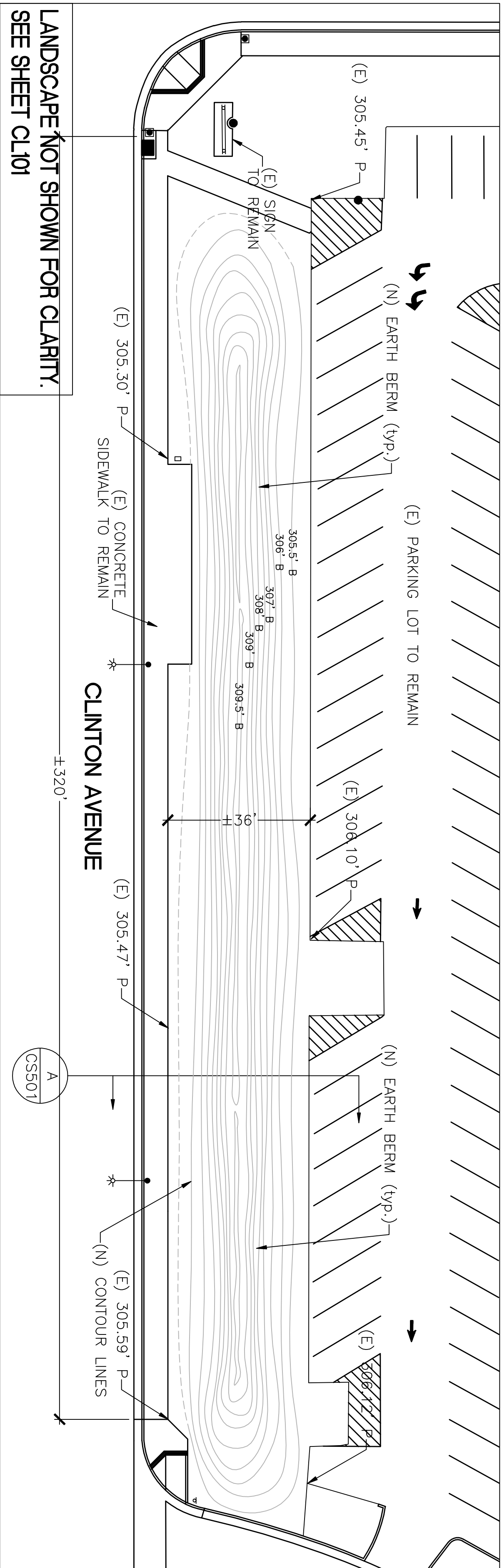
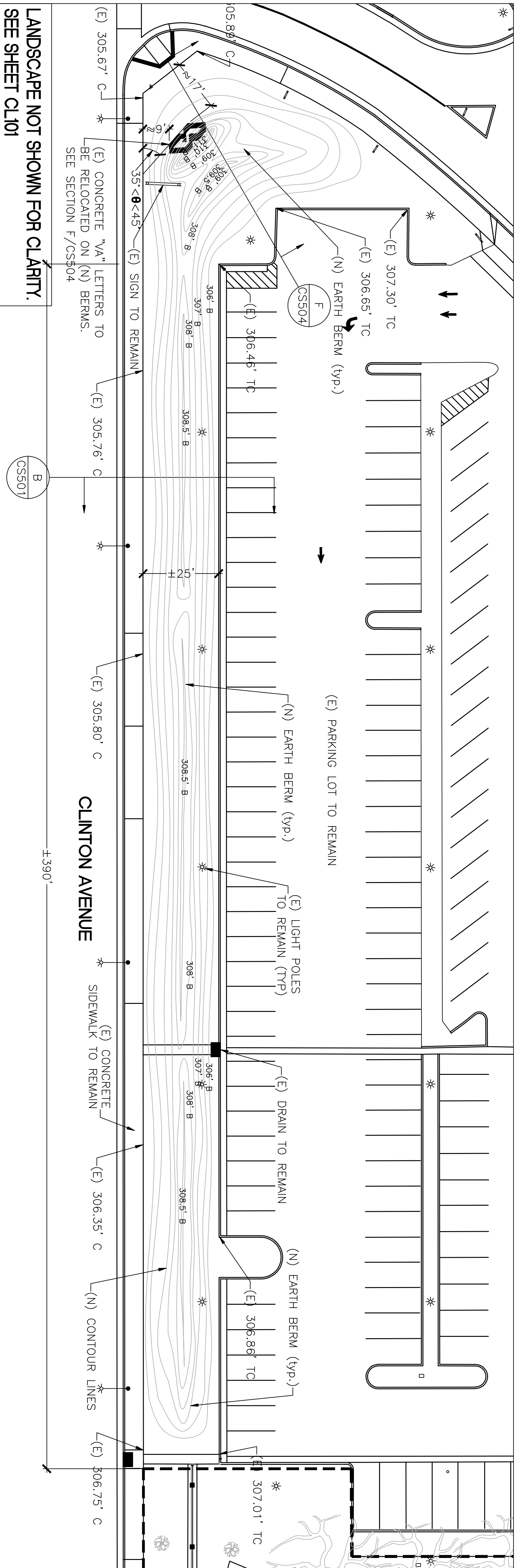


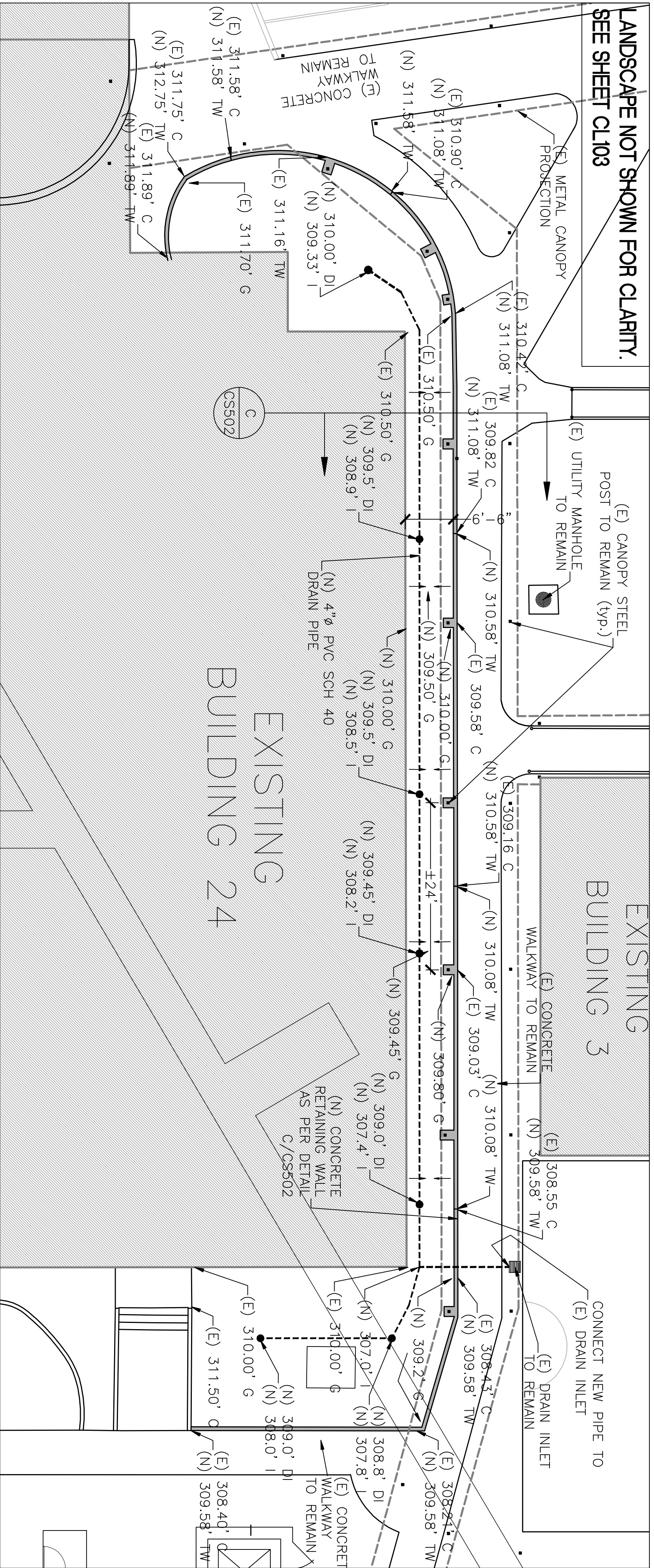
A PARTIAL GRADING PLAN -
CLINTON AT FRESNO



B PARTIAL GRADING PLAN -
CLINTON AVE



C PARTIAL GRADING/DRAINAGE
PLAN AT NEW PLANTER



CONSULTANTS:

ARCHITECT/ENGINEERS:

BERMS AND PLANTER

PAULI ENGINEERING, INC.
2501 N. SHAM AVE., #21, FRESNO, CA 93711
PH: (559)237-4408 - FAX: (559)237-4404
E-MAIL: pauliengineering@comcast.net
www.pauliengineering.com



Approved Project Director

Location
2615 E. Clinton Ave, Fresno, CA

Drawing Number
CL104

Office of
Construction
and Facilities
Management
Department of
Veterans Affairs