

GENERAL NOTES

WINDOW SYMBOLS ON THE FLOOR PLAN ARE KEYED TO THE TYPICAL SECTIONS. CONTRACTOR SHALL VERIFY ALL WINDOW DIMENSIONS AND QUANTITIES.

SEE THE REPLACEMENT WINDOW DETAIL FOR WINDOW INFORMATION BASED ON EFCO SERIES 450 TRIPLE GLAZED INSWING CASEMENT WINDOWS.

ROOM FINISHES VARY THROUGHOUT BUILDING 11; WINDOW CONTRACTOR SHALL BE RESPONSIBLE FOR VERIFICATION OF ALL ROOM FINISHES AND REPAIR OF ALL SURFACES RESULTING FROM THE WINDOW REPLACEMENT OPERATIONS. A SITE SURVEY WILL BE CONDUCTED PRIOR TO BID OPENING ON THIS CONTRACT TO DOCUMENT EXISTING CONDITIONS. COR SHALL NOTIFY BIDDERS OF ANY CONDITION CHANGES AFTER THE SITE SURVEY.

ANY DEBRIS INSIDE ROOMS, ON THE GROUNDS, SIDEWALKS, ETC., SHALL BE REMOVED AT THE END OF EACH DAY. COORDINATE WITH COR FOR POSSIBLE DUMPSTER LOCATION AT BUILDING 1. ALL WORK SHALL BE ACCOMPLISHED DURING NORMAL DUTY HOURS 8 AM TO 4:30 PM OR AS APPROVED BY COR AND CONTRACTING OFFICER.

ALL SAFETY REGULATIONS OF THIS STATION SHALL BE OBSERVED.

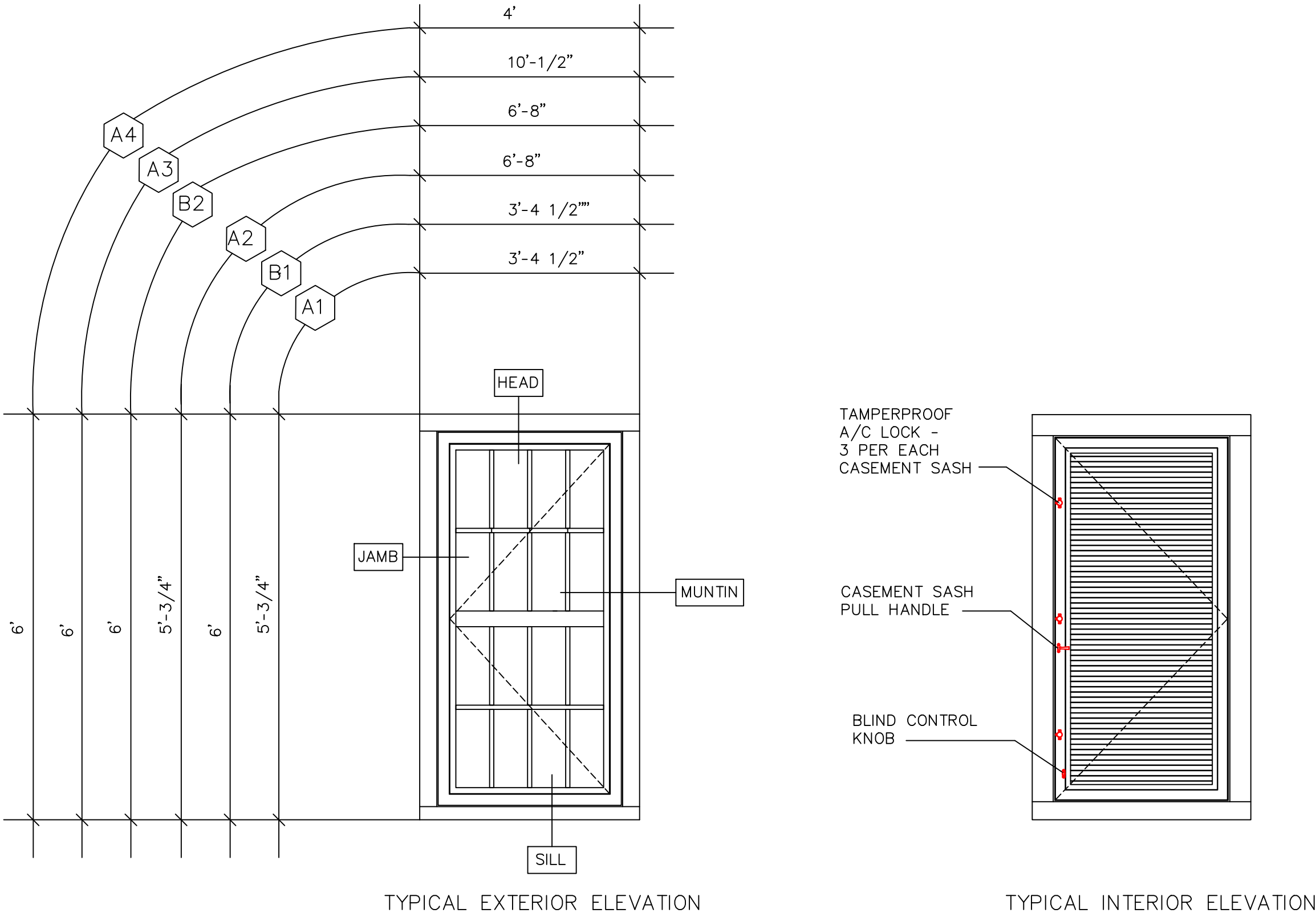
SALISBURY VAMC WILL NOT PROVIDE STORAGE FOR WINDOWS OR EQUIPMENT. THE WINDOW CONTRACTOR SHALL PROVIDE TRAILER OR OTHER SUITABLE STORAGE FACILITY FOR ALL REPLACEMENT WINDOWS. STORAGE TRAILER MAY BE PARKED IN SPACE AVAILABLE BEHIND THE WAREHOUSE, B17 OR AS APPROVED BY COR OR CONTRACTING OFFICER.

BUILDING 11 IS AN OUTPATIENT MENTAL HEALTH BUILDING WHICH WILL REQUIRE SCHEDULING FOR ACCESS TO MOST SPACES. AFTER THE NOTICE TO PROCEED ON THIS CONTRACT THE CONTRACTOR AND COR SHALL SET A PRELIMINARY SCHEDULE BASED ON THE NUMBER OF WINDOWS THAT CAN SUCCESSFULLY BE REMOVED AND REPLACED IN A NORMAL WORK DAY. NO MORE WINDOWS CAN BE REMOVED THAN CAN BE REPLACED IN A NORMAL WORK DAY. ALL AREAS OF BUILDING 11 ARE OCCUPIED ALL DAY WITH SOME EVENING ACTIVITIES ALSO SCHEDULED IN THE BUILDING AND THE CONTRACTOR MUST PROVIDE A CLEAN HAZARD FREE WORK AREA AT EACH WINDOW.

CONTRACTOR SHALL BE RESPONSIBLE FOR REMOVING AND REPLACING DRAPES AND FURNITURE IN THE WAY OF ACCESSING EACH WINDOW LOCATION. WINDOW SHADES AND BLINDS SHALL BE REMOVED AND DISPOSED OF. FURNITURE SHALL BE REPLACED AS QUICKLY AS POSSIBLE.

A1, B1, AND A4 WINDOWS ONLY OCCUR AS SINGLE WINDOWS IN A SINGLE OPENING. A2 AND B2 WINDOWS ARE TWO WINDOWS IN A SINGLE OPENING WITH A CENTER MULLION CONNECTING THE TWO SINGLE WINDOWS. A3 IS THREE WINDOWS IN A SINGLE OPENING WITH CENTER MULLIONS CONNECTING THE THREE SINGLE WINDOWS. AT SOME LOCATIONS WHERE THERE ARE TWO AND THREE WINDOWS IN A SINGLE OPENING A WALL MAY ABUTT THE WINDOW AT THE CENTER MULLIONS. CONTRACTOR SHALL BE RESPONSIBLE FOR MAINTAINING THE INTEGRITY OF THE INTERSECTING WALL AFTER INSTALLING THE NEW WINDOWS.

NO EXISTING WINDOWS HAVE BEEN DESIGNATED AS HAVING LEAD PAINT OR CAULK ON THE WINDOW UNIT, HOWEVER IF ANY LEAD PAINT OR CAULK IS FOUND THE WINDOW REMOVAL METHOD FOR THOSE WINDOWS SHALL BE CONSISTENT WITH NON ABATEMENT PRACTICES; THE WINDOW UNIT WOULD BE REMOVED AS A WHOLE UNIT. NO SPECIAL BAGGING OR TAGGING METHODS WILL BE REQUIRED FOR DISPOSAL. CONTRACTOR WOULD HAVE TO PROVIDE DOCUMENTATION THAT THE WINDOWS WERE NOT REMOVED USING LEAD ABATEMENT TECHNIQUES.

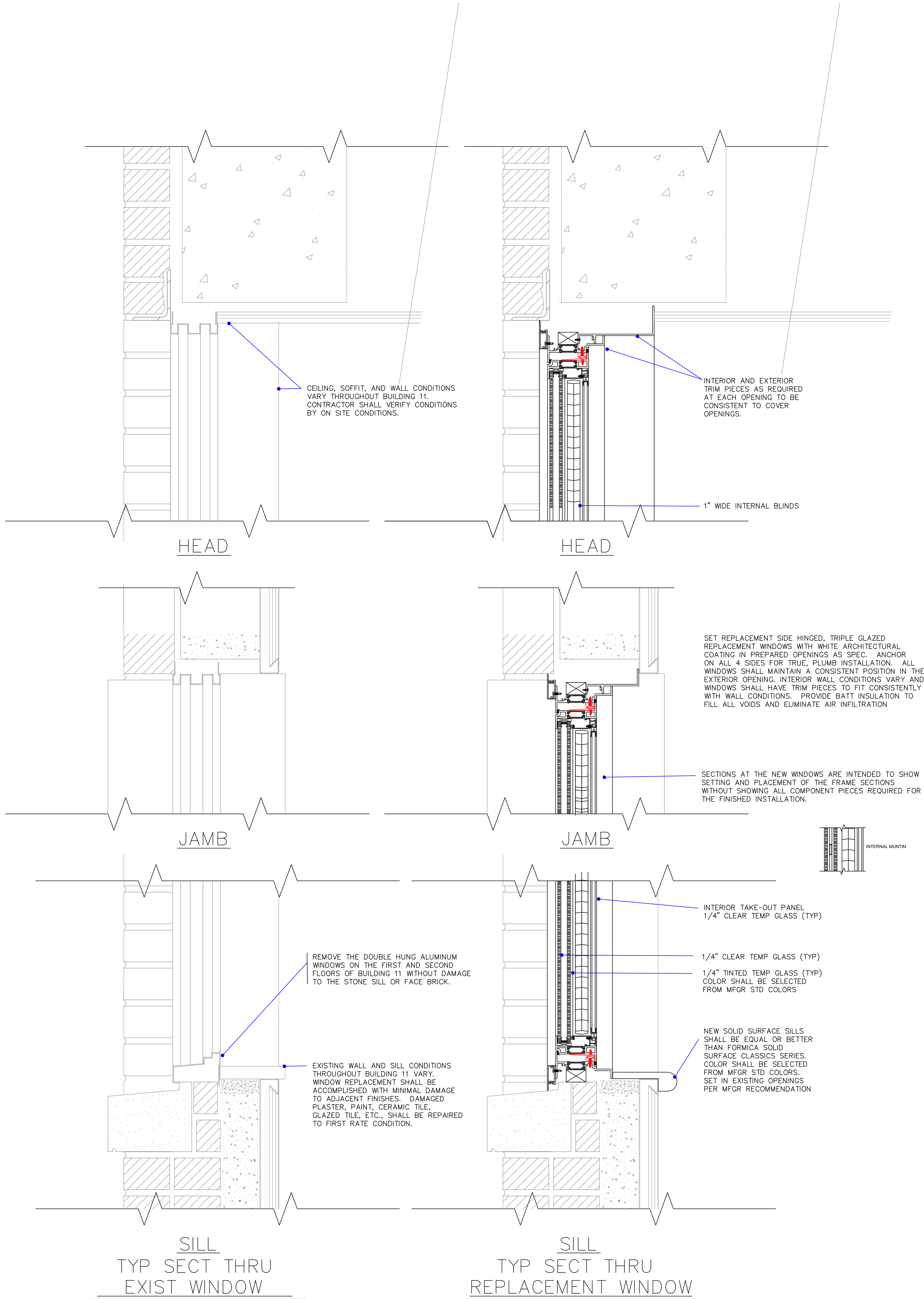



ALL WINDOW DETAILS ARE BASED ON EFCO SERIES 450 INSWING CASEMENT HIGH PERFORMANCE THERMAL WINDOWS. THIS WINDOW SELECTION IS USED AS THE DESIGN BASIS AND IS NOT INTENDED TO LIMIT COMPETITION. WINDOW MANUFACTURER SHALL BE EQUAL OR BETTER THAN THE SPECIFICATION REQUIREMENTS.

FINISH SHALL BE WHITE ARCHITECTURAL COATING AS SPECIFIED.

PROVIDE ALUMINUM BUTT HINGES AT THE CASEMENT SASH. EQUIP EACH WINDOW WITH 3 EACH TAMPERPROOF WHITE BRONZE A/C LOCKS WHITE BRONZE SASH PULL HANDLE AND KEY RELEASE LIMIT OPENING ARMS.

GLAZING SHALL BE 1" INSULATED EXTERIOR WITH 1/4" CLEAR TEMP AT OUTSIDE, 1/4" TINTED TEMP AT INSIDE WITH LOW EMISSIVITY PYROLYTIC COATING HAVING AN E" OF 0.15 AND ARGON FILLED AIR SPACE. SEE ALSO SPECIFICATIONS. INTERIOR TAKE-OUT PANEL SHALL BE 1/4" CLEAR TEMPERED GLASS.



Revision	Date	RECOMMEND APPROVAL				Drawing Title	Project Title			Date		Department of Veterans Affairs	
		REQUESTER	Date	CHIEF OF SERVICE	Date	CHIEF OF STAFF	Date	BUILDING 11 WINDOW REPLACEMENT					12/14/12
		ASSOC. DIR. PATIENT CARE SVC.	Date	ASSOC. DIR. for OPERATIONS	Date	APPROVED: Safety Manager/M&O Supervisor	Building Number	Checked	Drawn	Project No.			
		APPROVAL BY:	Date	APPROVED:Chief of Facilities Management Svr.	Date	Location	11	ES	659-13-114				
		MEDICAL CENTER DIRECTOR							DRAWING NO. 1 OF 3				