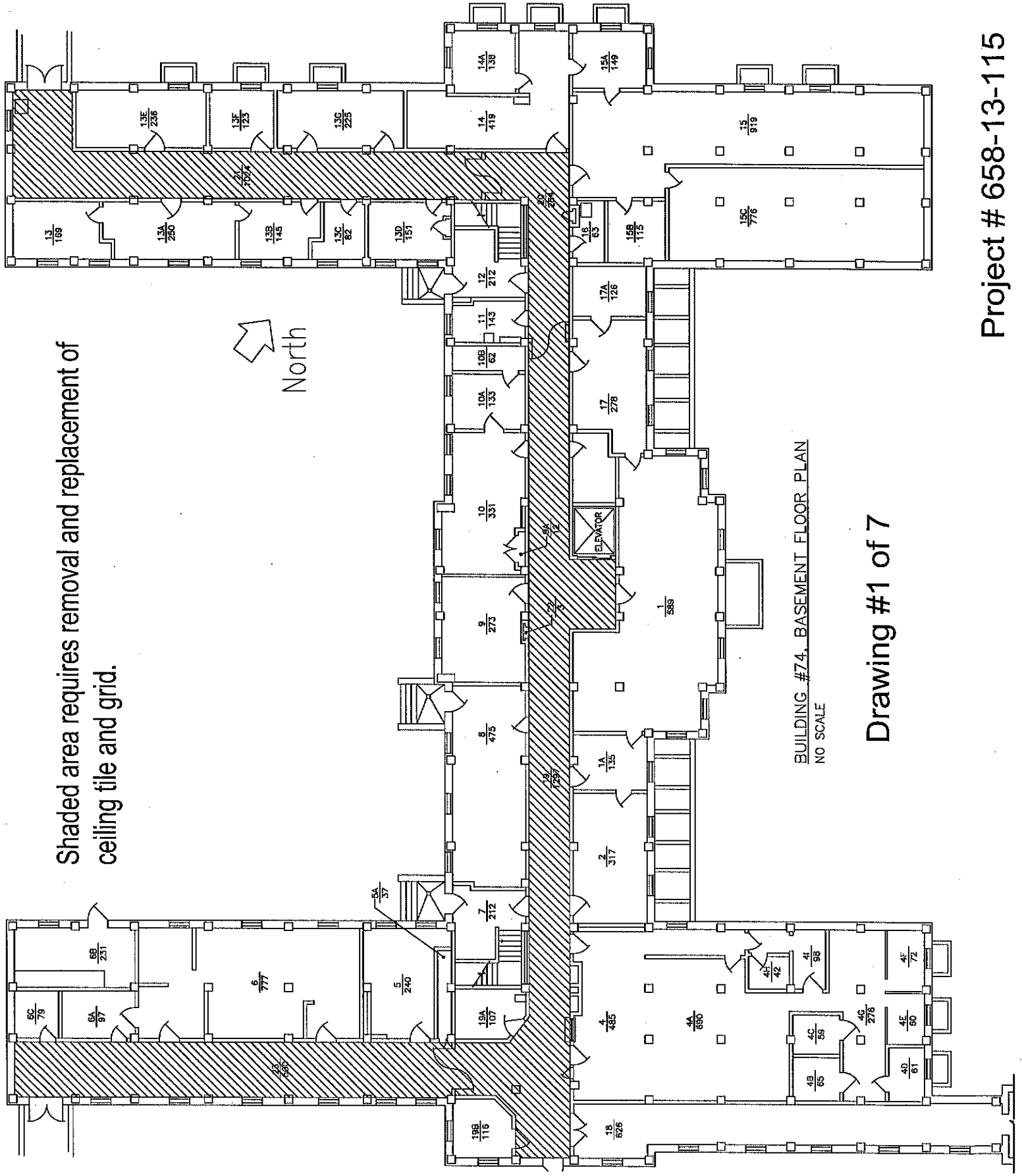
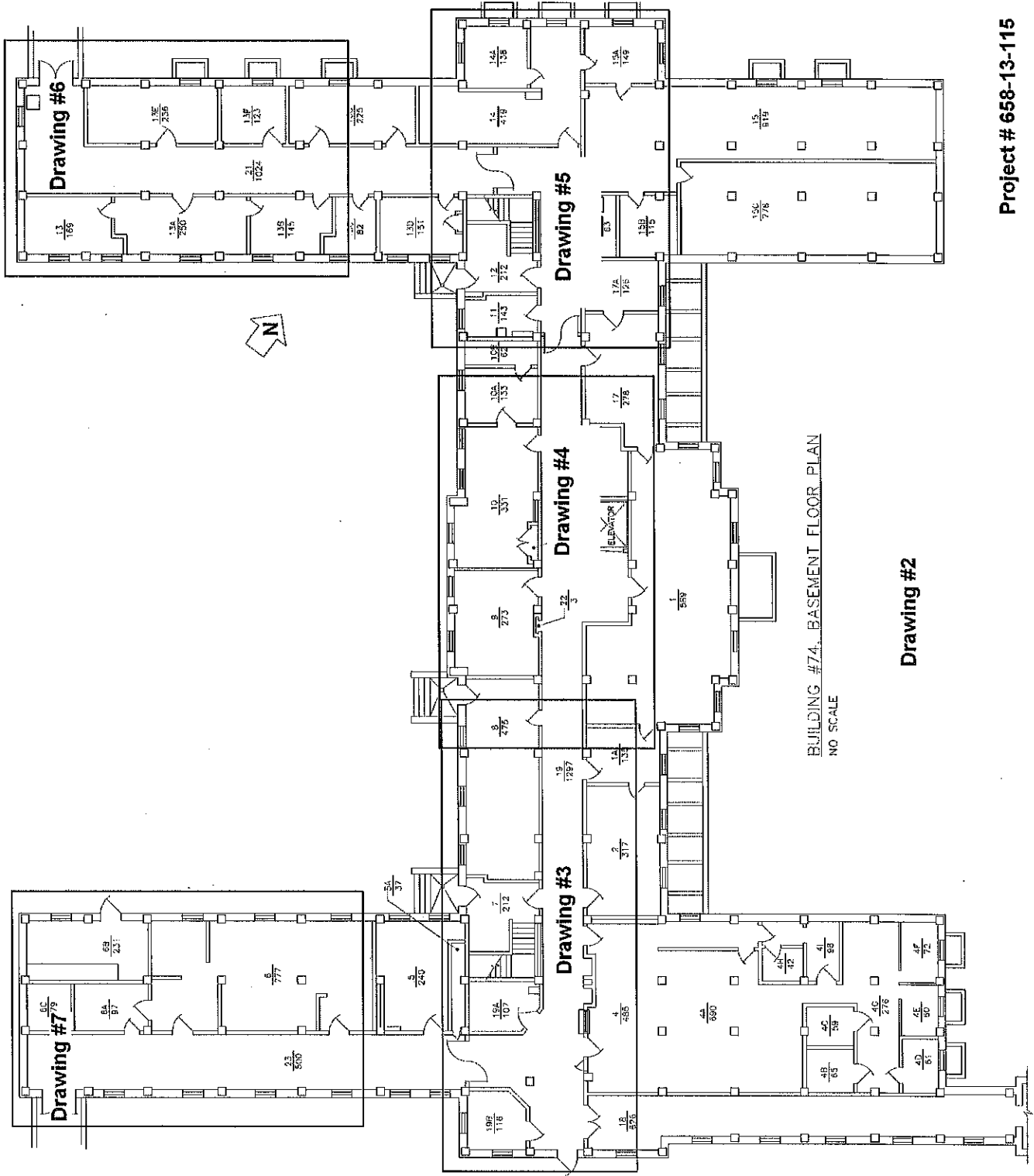


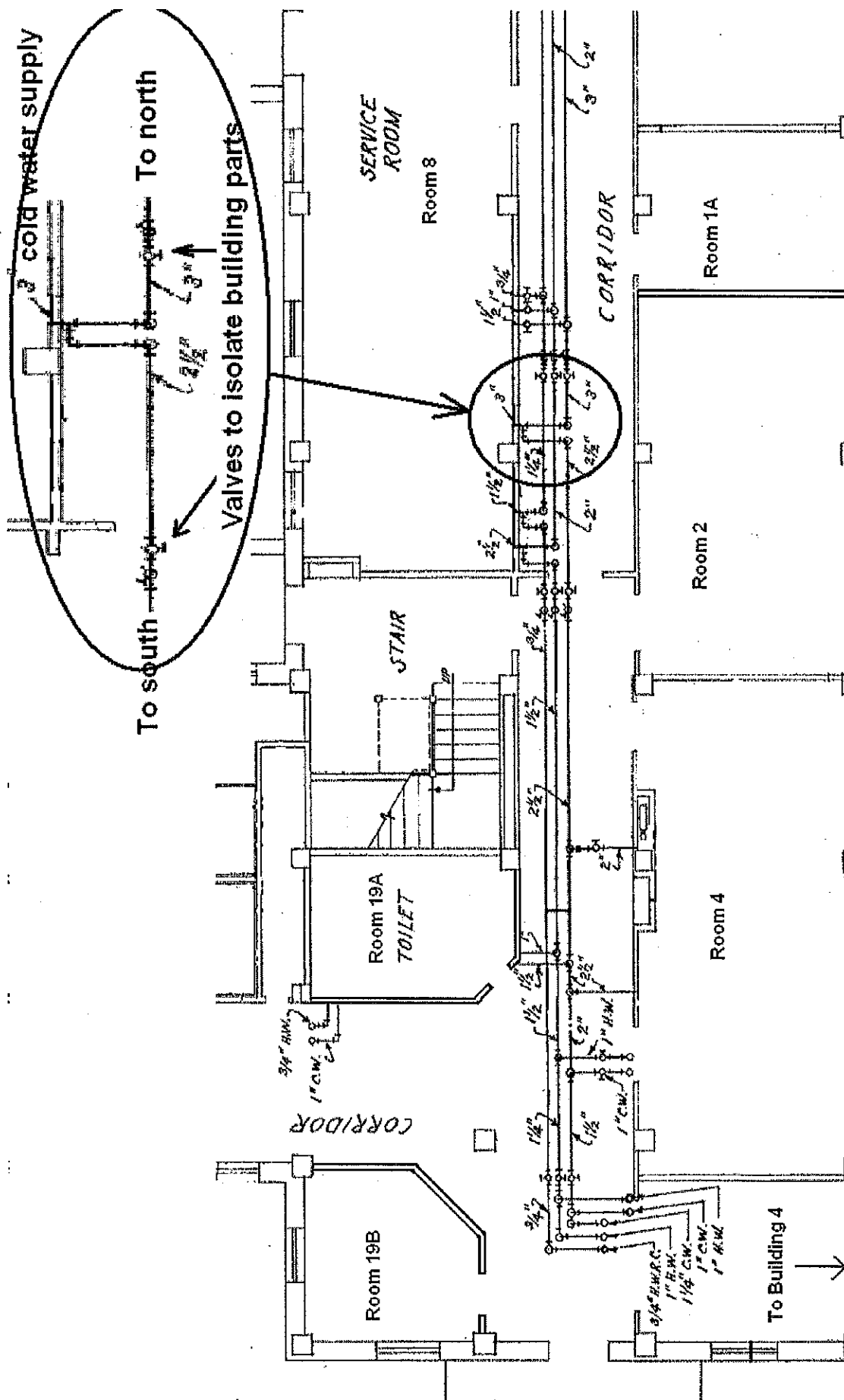
Shaded area requires removal and replacement of ceiling tile and grid.



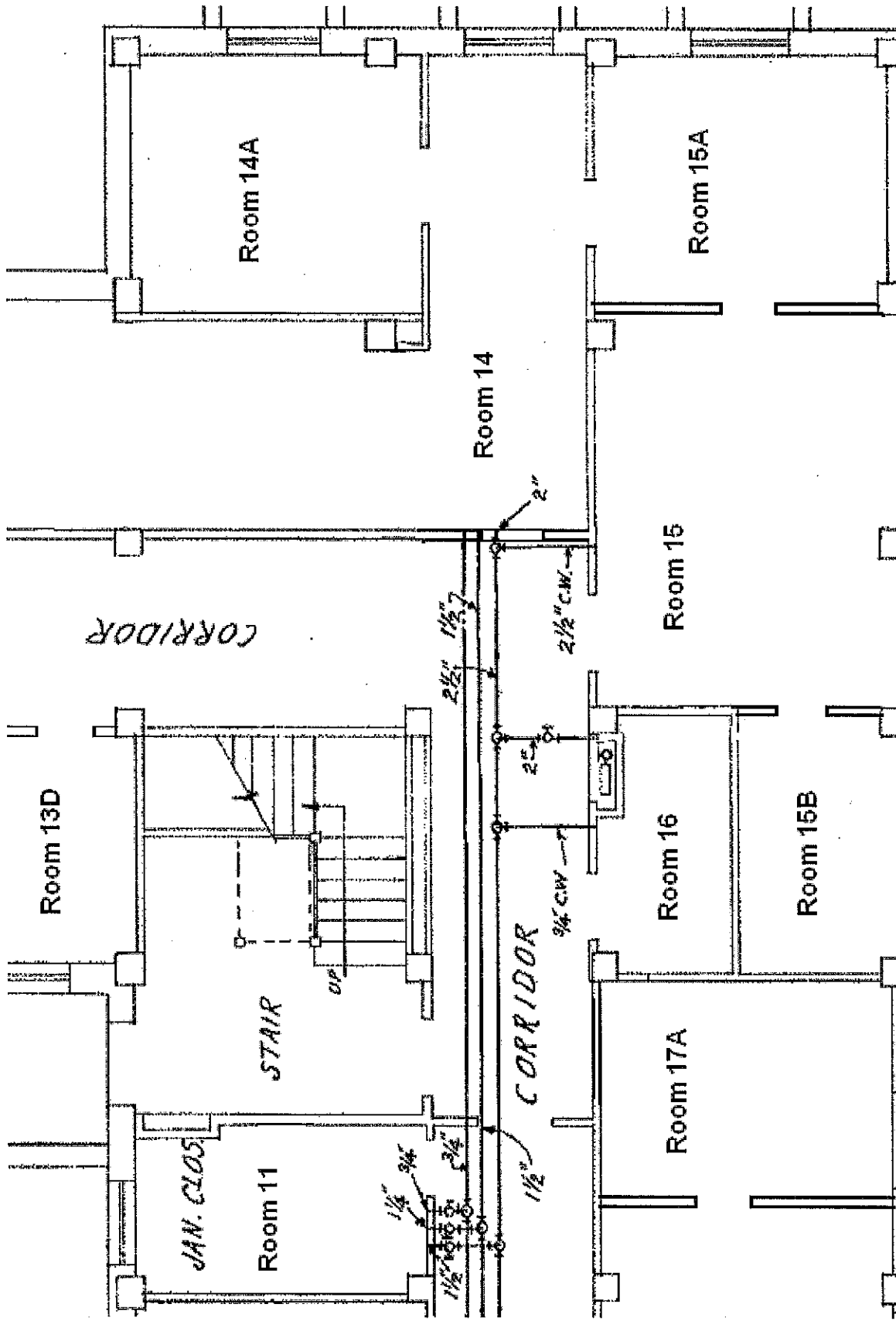
BUILDING #74, BASEMENT FLOOR PLAN
NO SCALE

Drawing #1 of 7



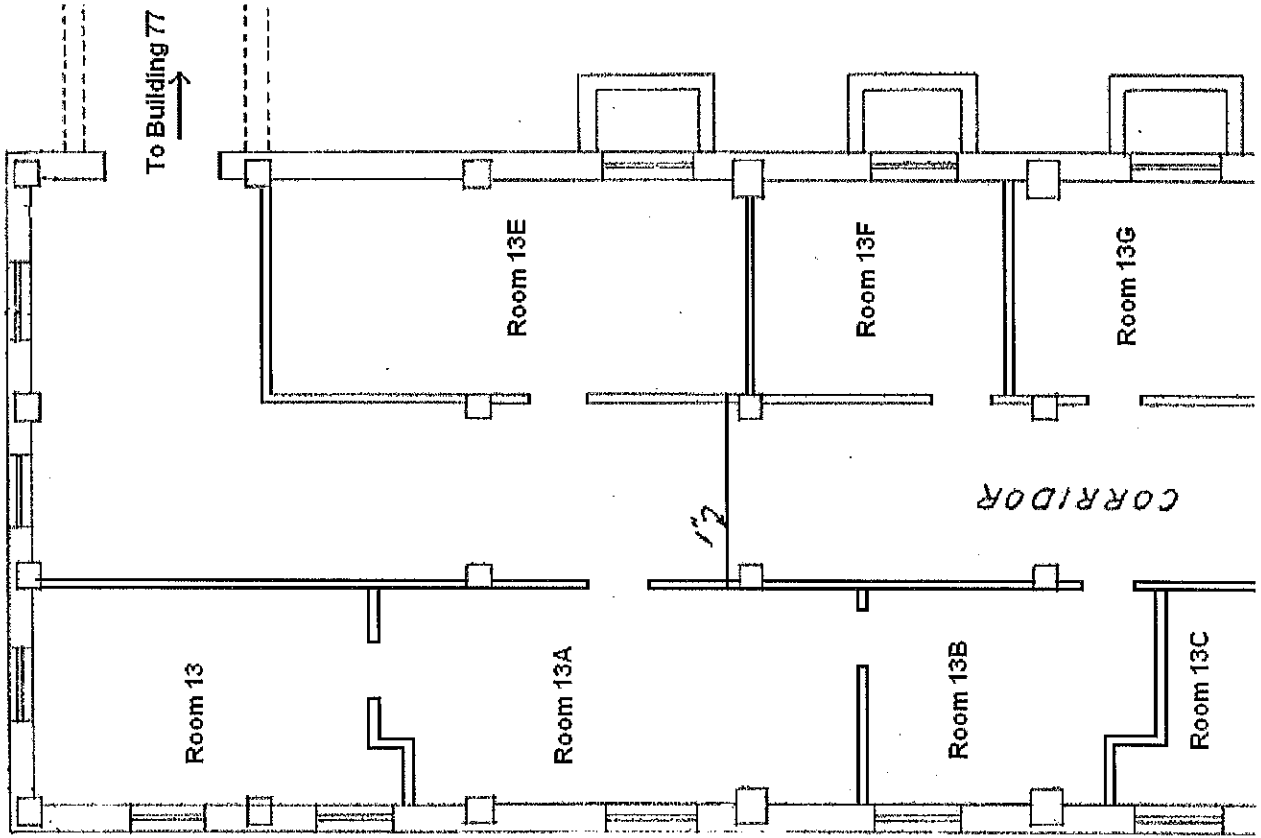


Drawing #3
Not to scale



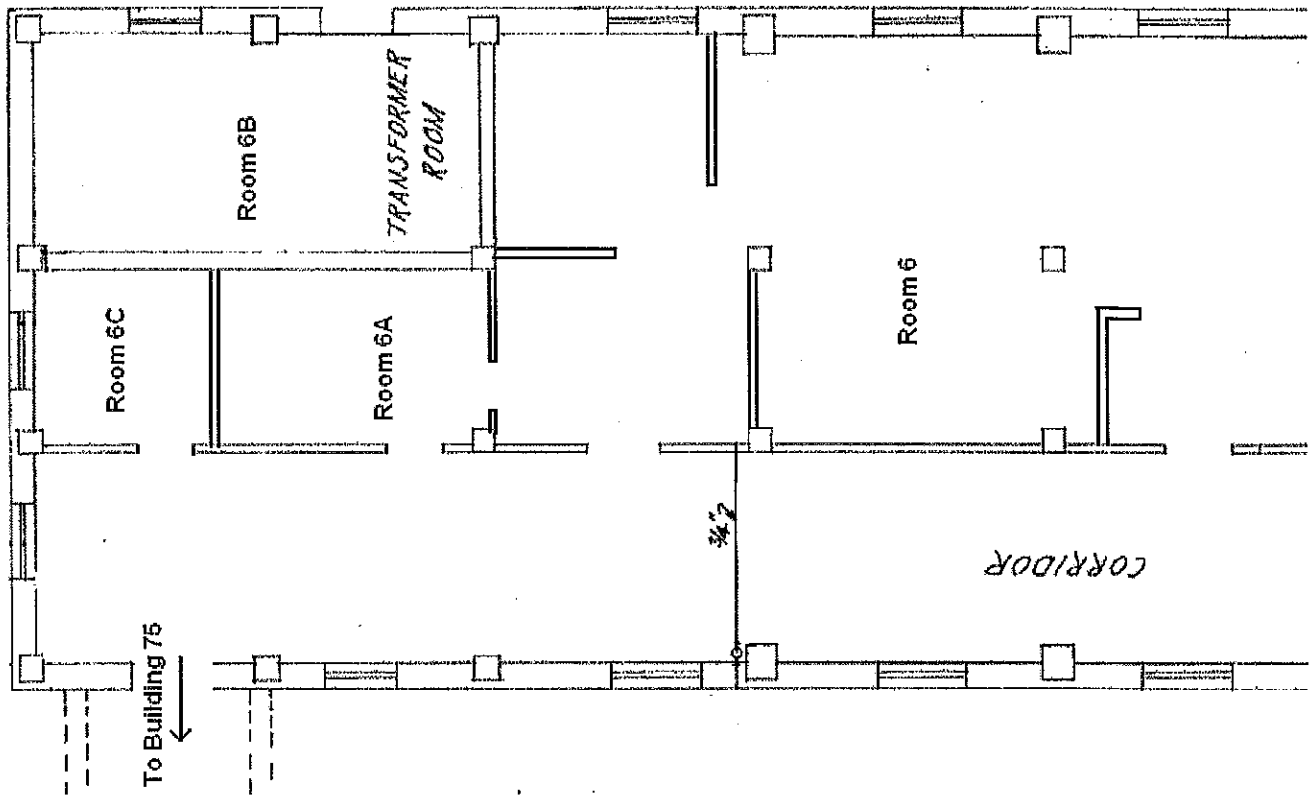
Drawing #5
Not to scale

Project # 658-13-115



Drawing #6
Not to scale

Project # 658-13-115



Drawing #7
Not to scale

Project # 658-13-115