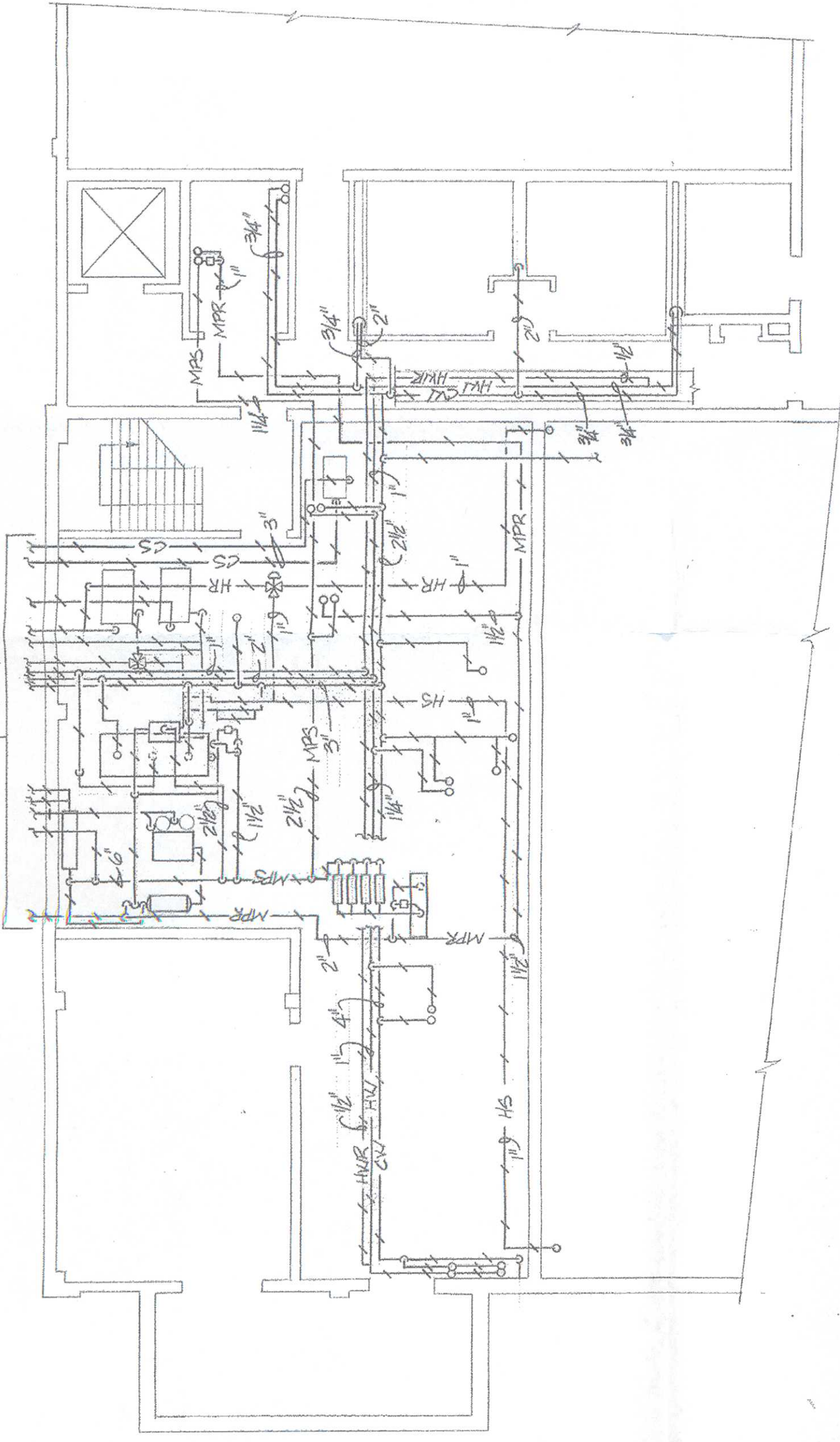
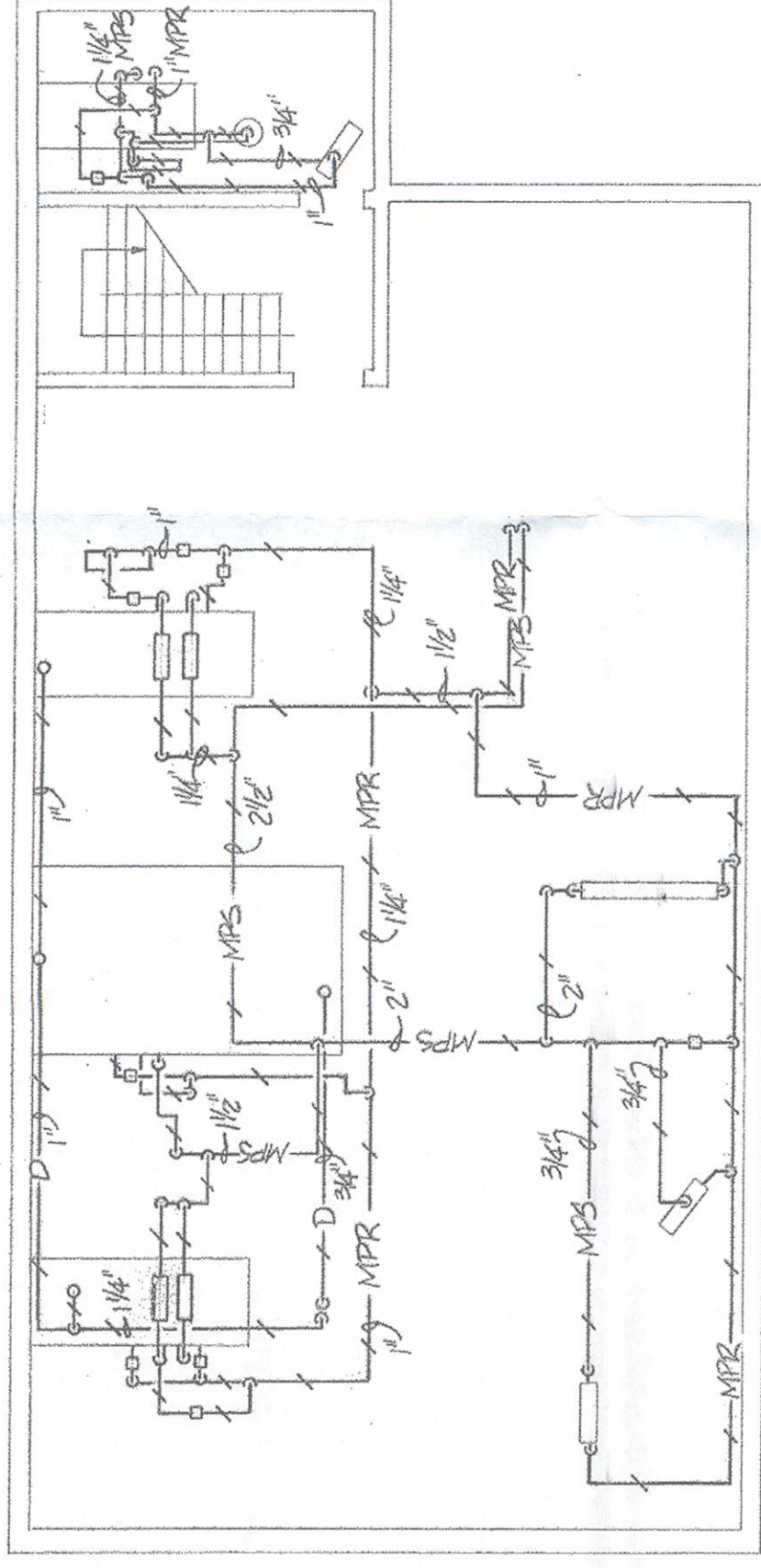


FOR CONTINUATION OF PIPING SEE PIPE  
TRENCH PLAN ON THIS DRAWING



SERVICE ROOM & BASEMENT - 314B  
SCALE: 1/8"=1'-0"



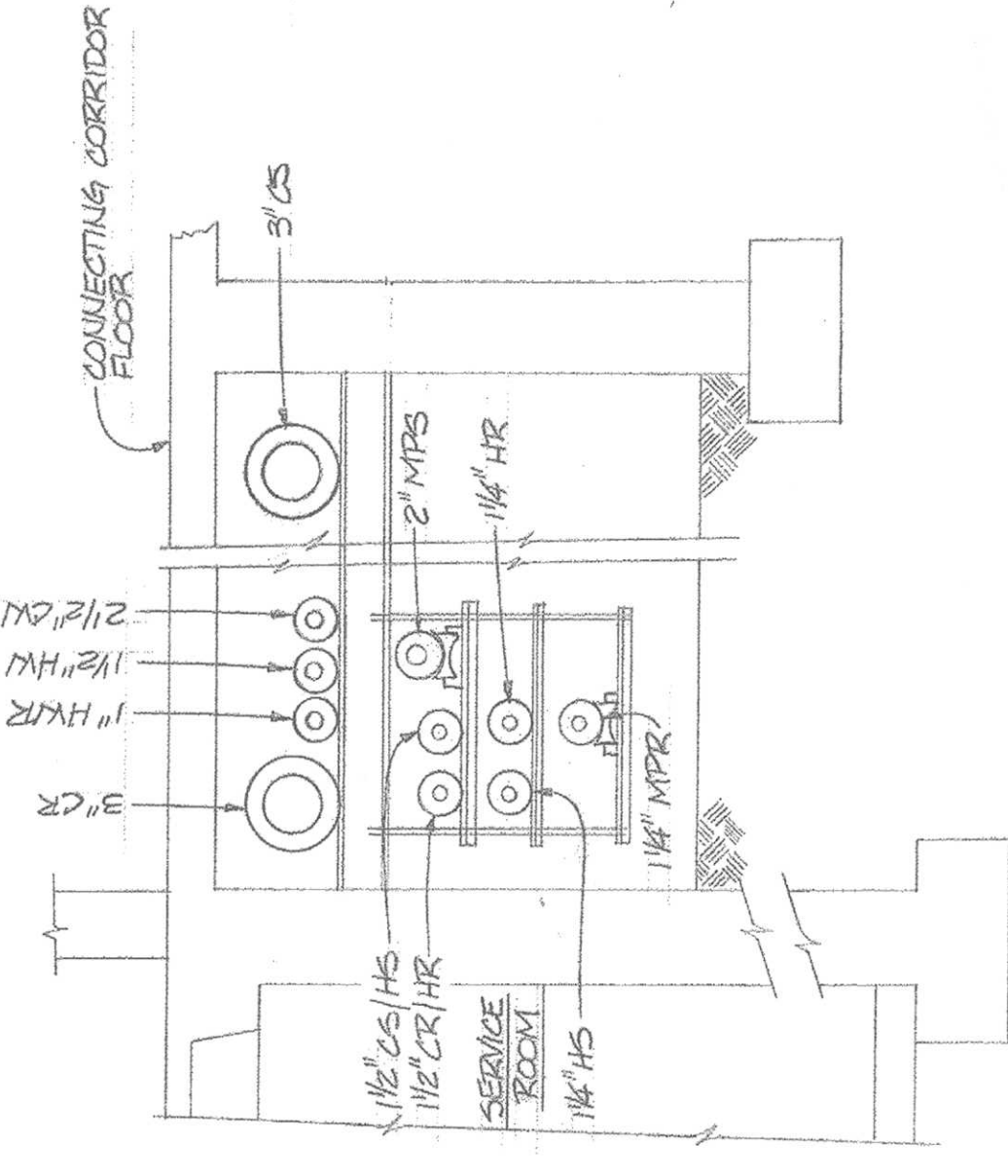
UPPER LEVEL MECHANICAL EQUIPMENT  
ROOM PLAN - 314B  
SCALE: 1/8"=1'-0"

**MECHANICAL SYMBOLS  
AND ABBREVIATIONS**

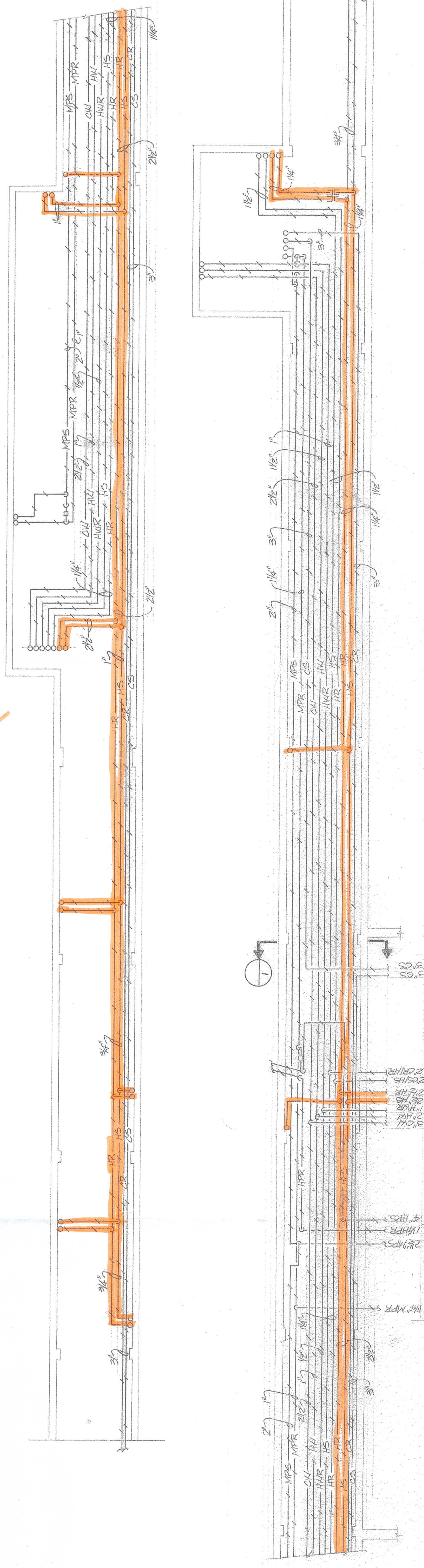
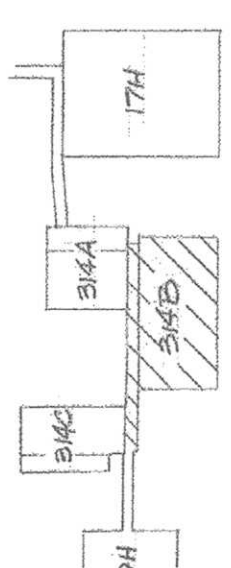
- EXISTING PIPE TO REMAIN, REMOVE ALL EXISTING ASBESTOS INSULATION ON PIPE & FITTINGS (ABBREVIATIONS IN PIPING INDICATES SERVICE)
- EXISTING PIPE TO REMAIN, REMOVE ALL EXISTING ASBESTOS INSULATION ON PIPE & FITTINGS (ABBREVIATIONS IN PIPING INDICATES SERVICE)
- EXISTING PIPE TO REMAIN, REMOVE ALL EXISTING ASBESTOS INSULATION ON PIPE & FITTINGS (ABBREVIATIONS IN PIPING INDICATES SERVICE)
- EXISTING UNINSULATED PIPE TO BE INSULATED
- EXISTING PIPE & INSULATION TO REMAIN (NO WORK REQUIRED)

MAIN FLOOR LEVEL - 314B  
SCALE: 1/8"=1'-0"

OMIT



SECTION  
NOT TO SCALE



PART PIPE TRENCH PLAN  
SCALE: 3/16"=1'-0"

FOR CONTINUATION OF PIPING  
SEE SERVICE ROOM PLAN ON  
THIS DRAWING

CONTRACTOR SHALL FIELD VERIFY PIPE SIZES  
PRIOR TO ORDERING NEW PIPE INSULATION  
SEE DRAWING M-2 FOR PHASE 3 SYMBOLS AND ABBREVIATIONS  
BIDDER SHOULD VISIT SITE & THOROUGHLY FAMILIARIZE  
HIMSELF WITH EXISTING CONDITIONS BEFORE SUBMITTING BID

Project Title	ASBESTOS REMOVAL AND RE-INSULATION IN VARIOUS BUILDINGS-VAMC		
Date	2/27/84	Project No.	82-105-108
Building Number	314B	Drawing No.	1-34
Location	PERRY POINT, MARYLAND		
Approved: Division Chief	Checked	Drawn	
Approved: Service Director			

JAMES POSEY ASSOCIATES INC.  
CONSULTING ENGINEERS  
8603 WHITE STONE ROAD BALTIMORE MD.



COMM. NO. : 8320-83