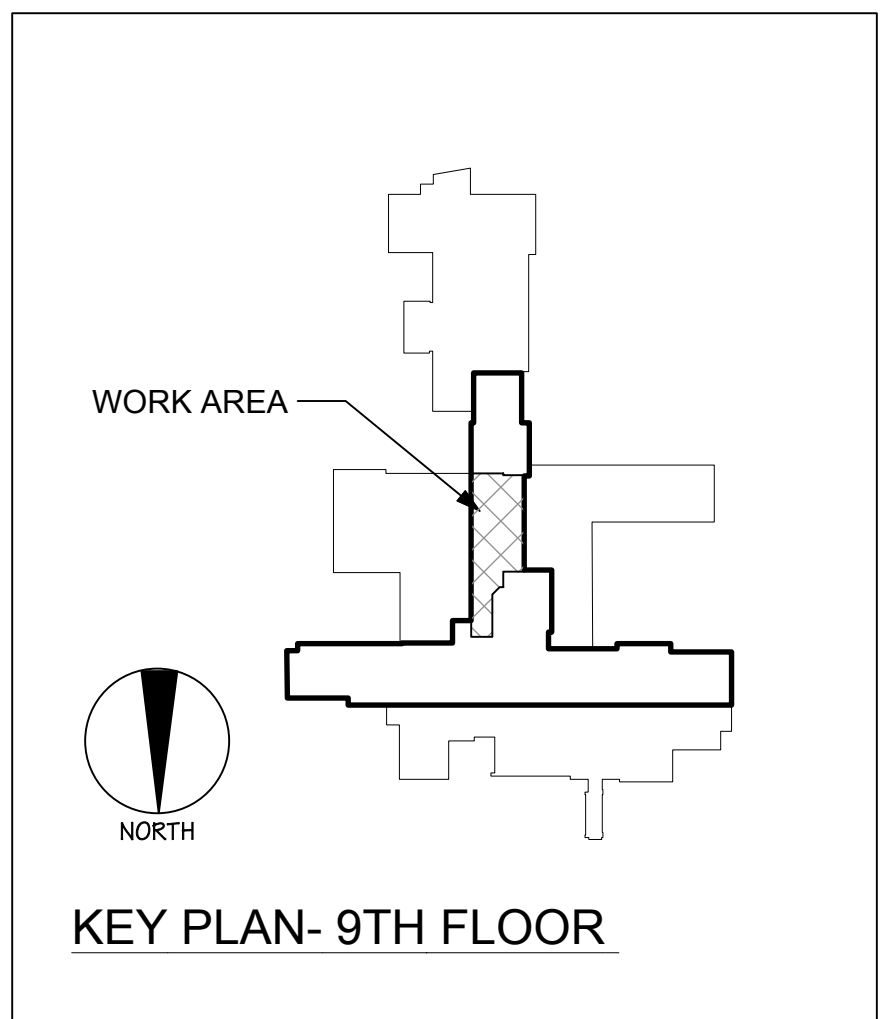


1 REFLECTED CEILING PLAN
Scale: 1/4" = 1'-0"

- ### GENERAL NOTES
1. UNLESS NOTED OTHERWISE, ALL CEILING HEIGHTS ARE TO BE 7'-7" A.F.F.
 2. ALL CEILING MOUNTED ITEMS CUT INTO TILES SHALL BE MOUNTED IN THE CENTER OF THE TILE UNLESS SPECIFICALLY NOTED AS OTHERWISE.
 3. SUSPENDED CEILING GRID SHALL BE ARRANGED SO THAT GRID IS SPACED EQUALLY FROM MOST REMOTE WALL IN EACH DIRECTION WITH NO TILE LESS THAN 6" WIDE UNLESS SPECIFICALLY NOTED OTHERWISE.
 4. CEILING PLANS DO NOT INDICATE ALL ELECTRICAL AND MECHANICAL EQUIPMENT. EQUIPMENT SHOWN IS FOR LOCATING PURPOSES ONLY. REFER TO MECHANICAL AND PLUMBING PLANS FOR SUCH EQUIPMENT.
 5. PATCH AND SECURE EXISTING CEILING AND INSULATION SCHEDULED TO REMAIN PRIOR TO INSTALLATION OF NEW CEILING. REPLACE CEILING INSULATION AND CEILING MATERIAL TO MATCH EXISTING WHERE IT IS MISSING.
 6. REFER TO DETAIL 7/AS-501 FOR TYPICAL CURTAIN TRACK DETAIL.

- ### CEILING SYMBOLS
- 2x2 ACOUSTIC CEILING TILE
 - 2x4 ACOUSTIC CEILING TILE
 - 2x4 VINYL FACED ACOUSTIC CEILING TILE
 - GWB CEILING OR SOFFIT
 - CEILING HEIGHT INDICATOR
 - RECESSED LIGHT FIXTURE
 - SURFACE MOUNTED LIGHT FIXTURE
 - PENDANT MOUNTED LIGHT FIXTURE
 - 2x4 RECESSED FLUORESCENT LIGHT FIXTURE
 - 2x2 RECESSED FLUORESCENT LIGHT FIXTURE
 - CEILING MOUNTED EXIT LIGHT
 - WALL MOUNTED EXIT LIGHT
 - WALL MOUNTED LIGHT FIXTURE
 - SUPPLY DIFFUSER
 - RETURN DIFFUSER



CONSULTANTS:		ARCHITECT/ENGINEERS:		Drawing Title REFLECTED CEILING PLAN & NOTES		Project Title RENOVATE FOR WOMEN'S CLINIC		Project Number VA# 528A7-13-701 DA# 12-001 Building Number 1	
				Approved: Project Director		Location 800 IRVING AVENUE, SYRACUSE NY 13210		Drawing Number AS-102	
						Date 02.08.2013		Checked KAD	
								Drawn LMB	
								Dwg. 11 of 41	