

three inches = one foot  
one and one half inches = one foot  
one inch = one foot  
three quarters inch = one foot  
one half inch = one foot  
three eighths inch = one foot  
one quarter inch = one foot  
one eighth inch = one foot  
one sixteenth inch = one foot

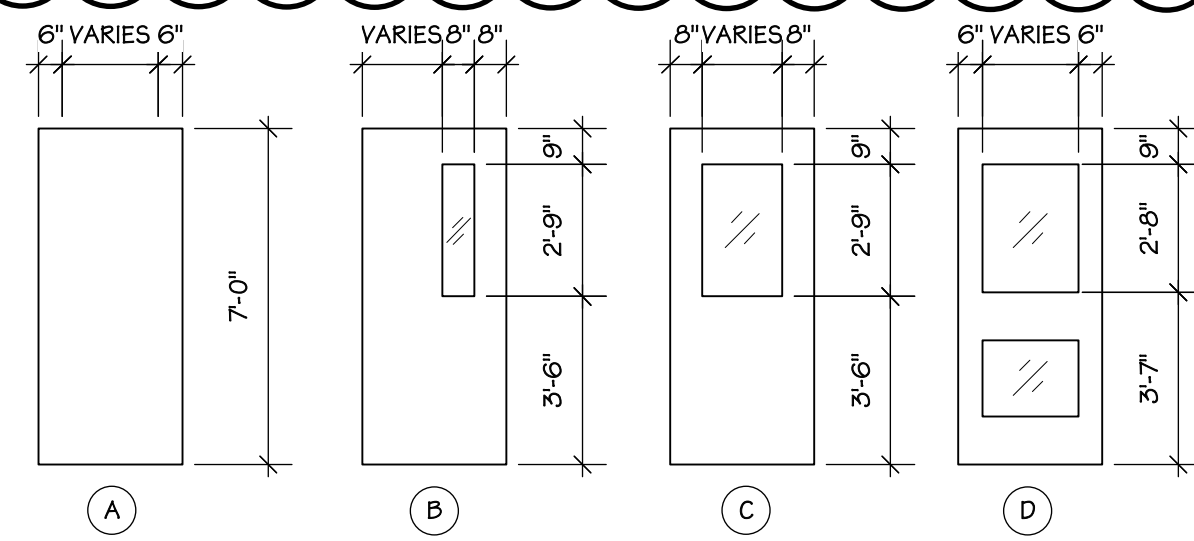
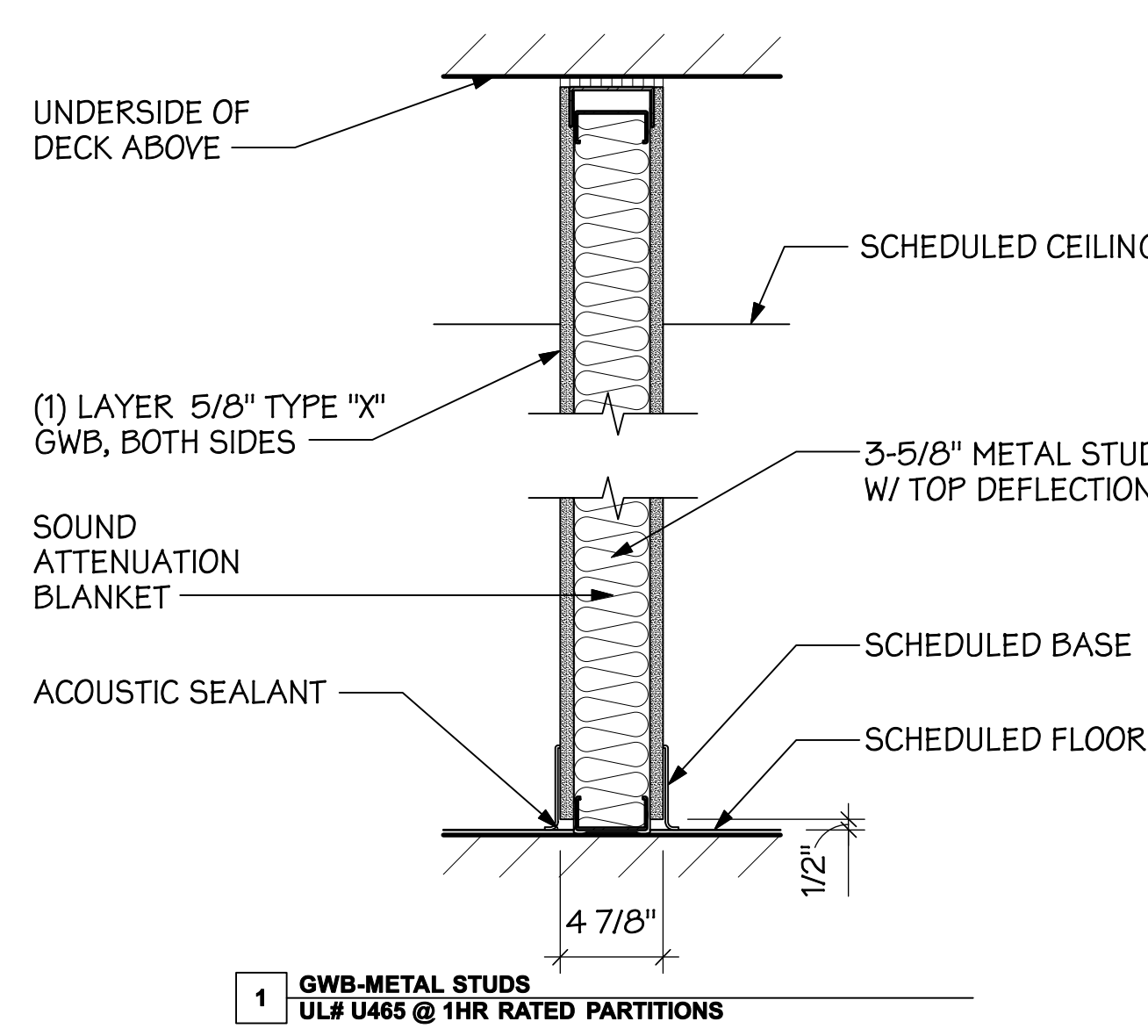
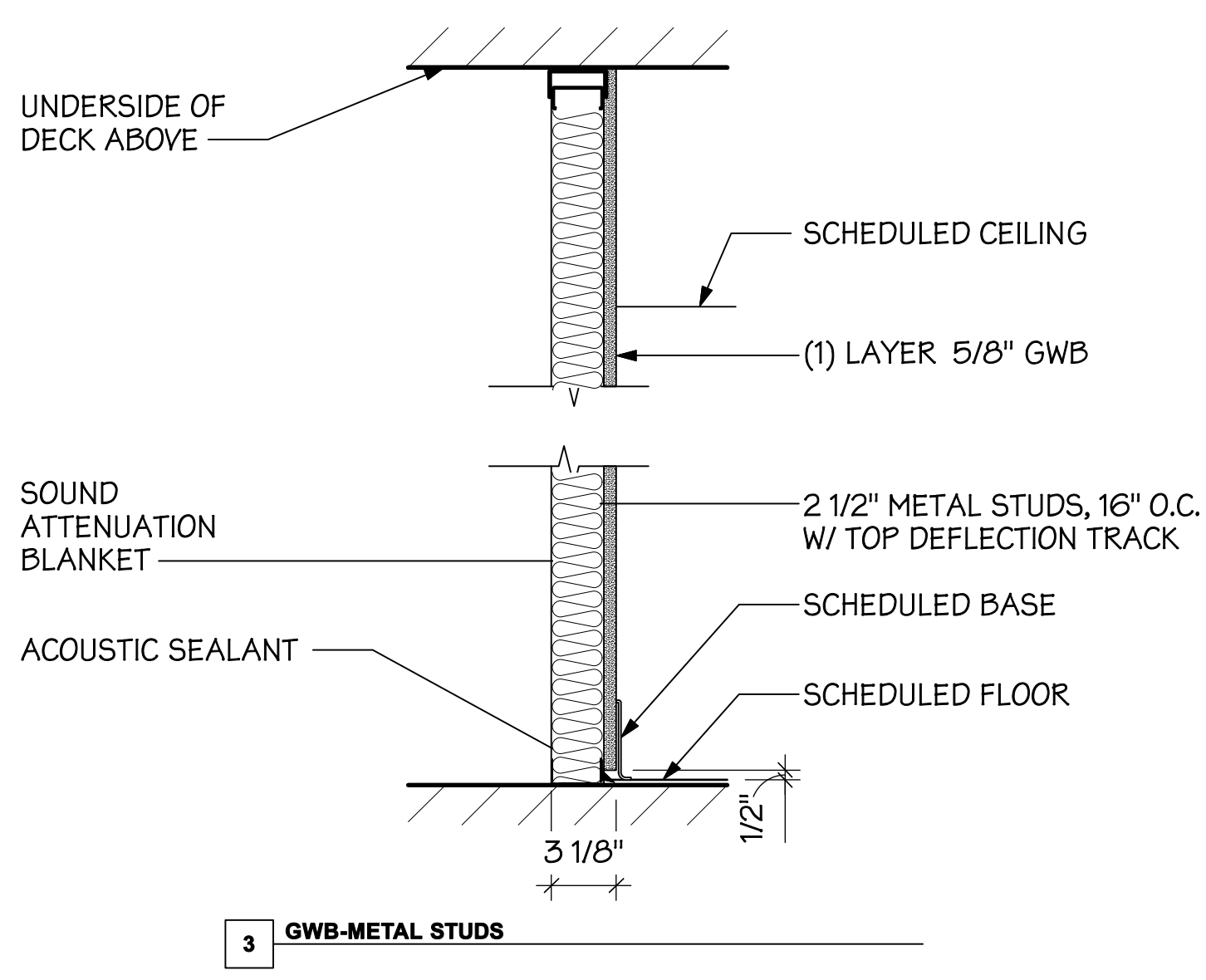
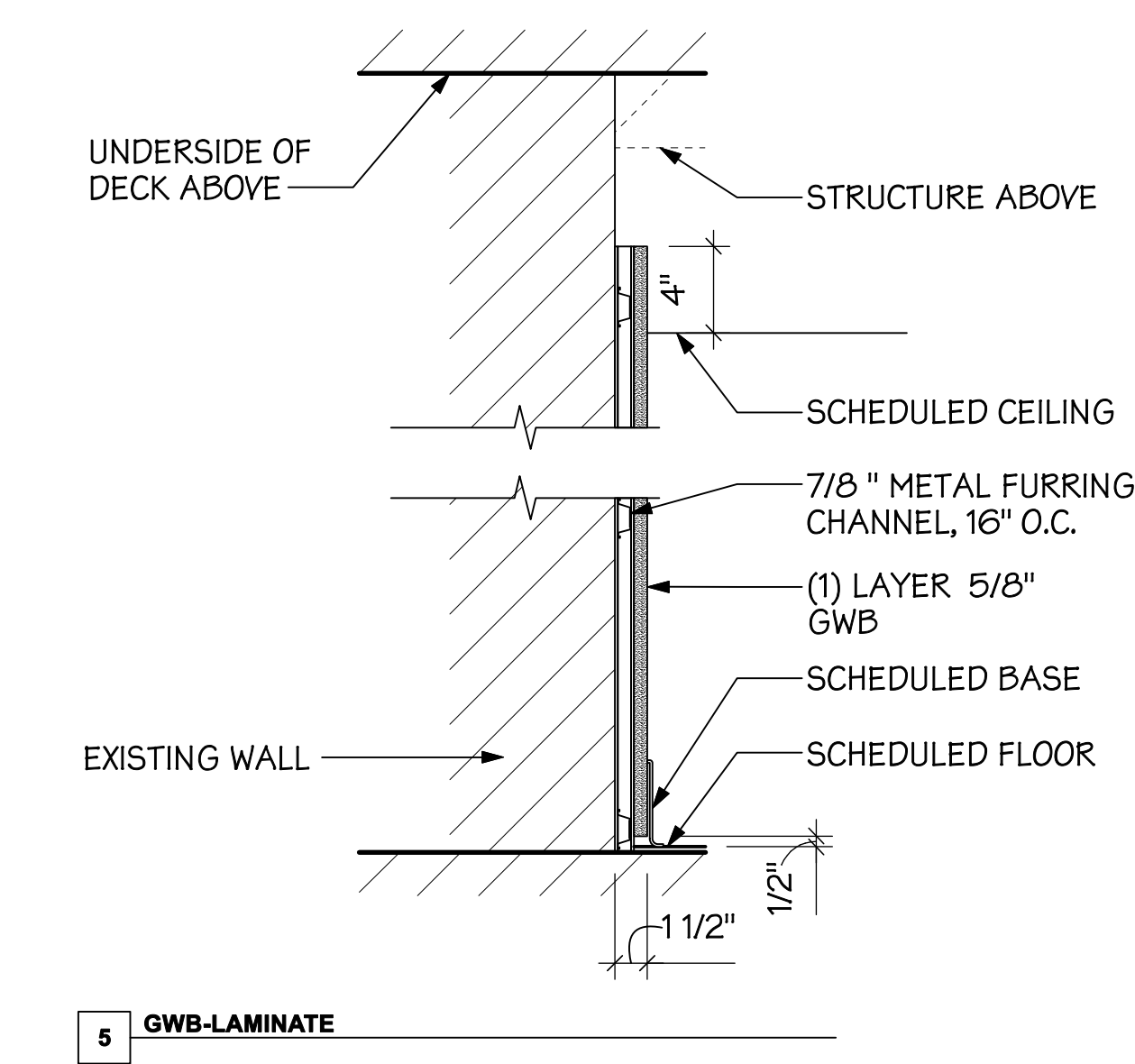
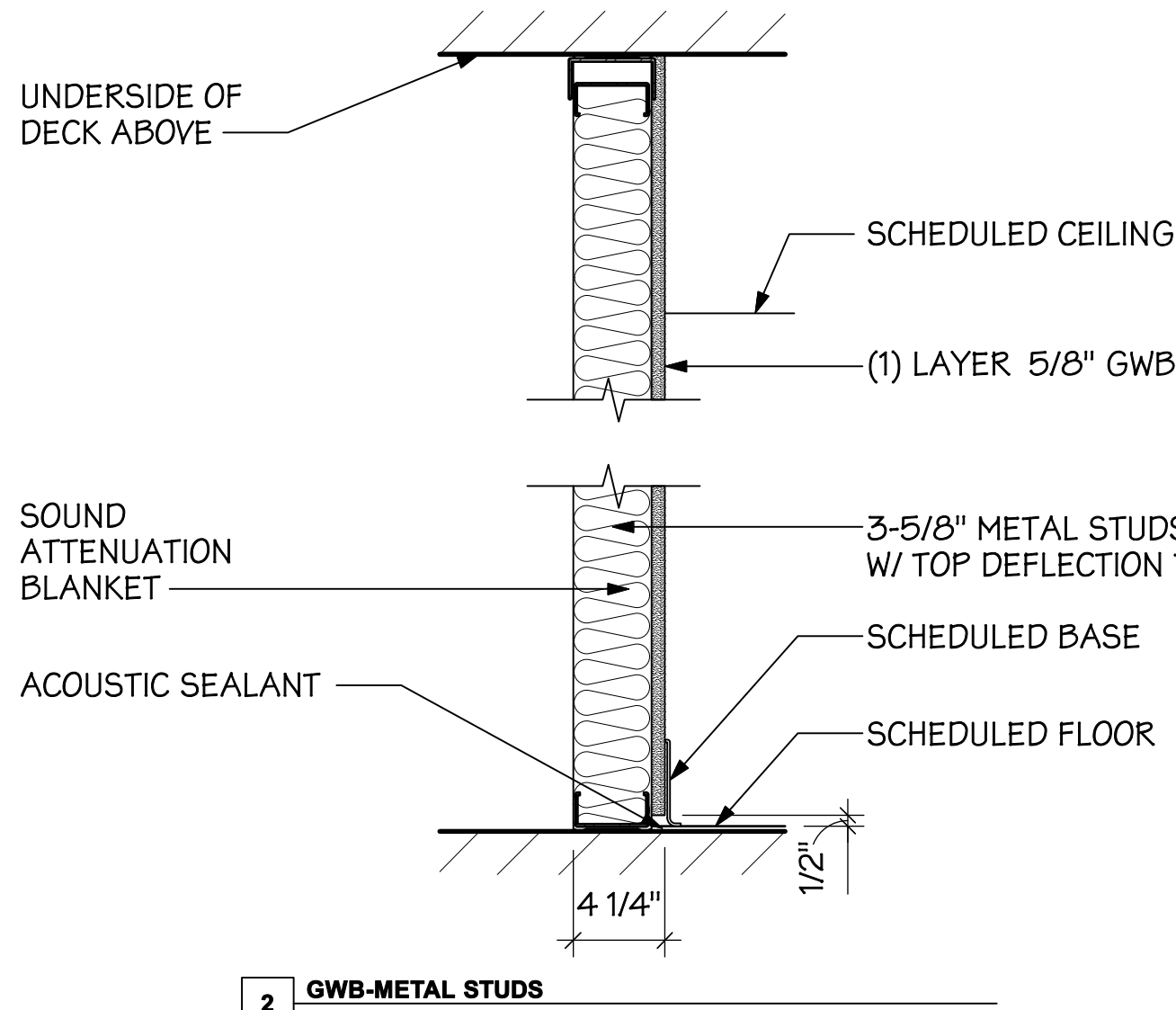
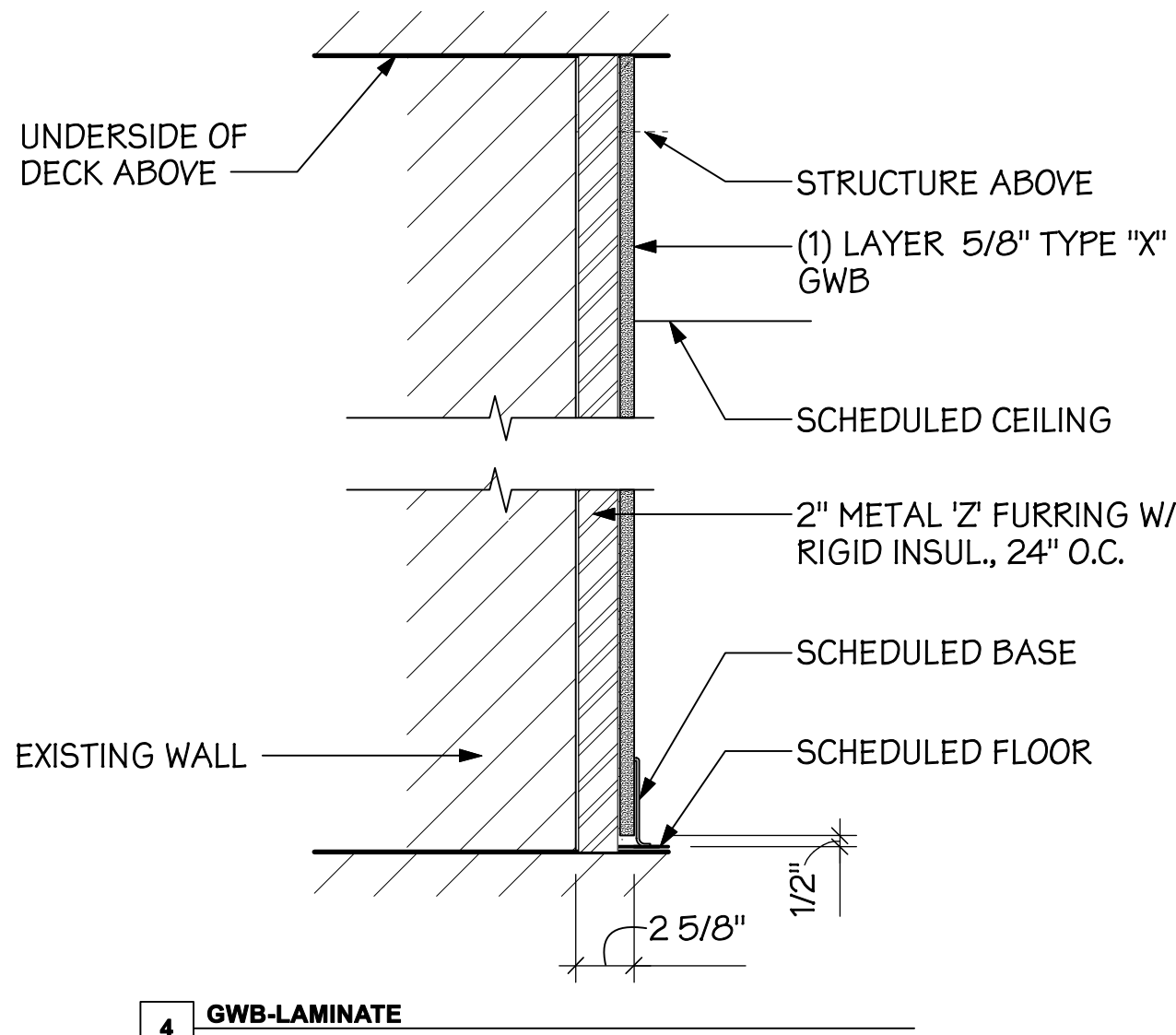
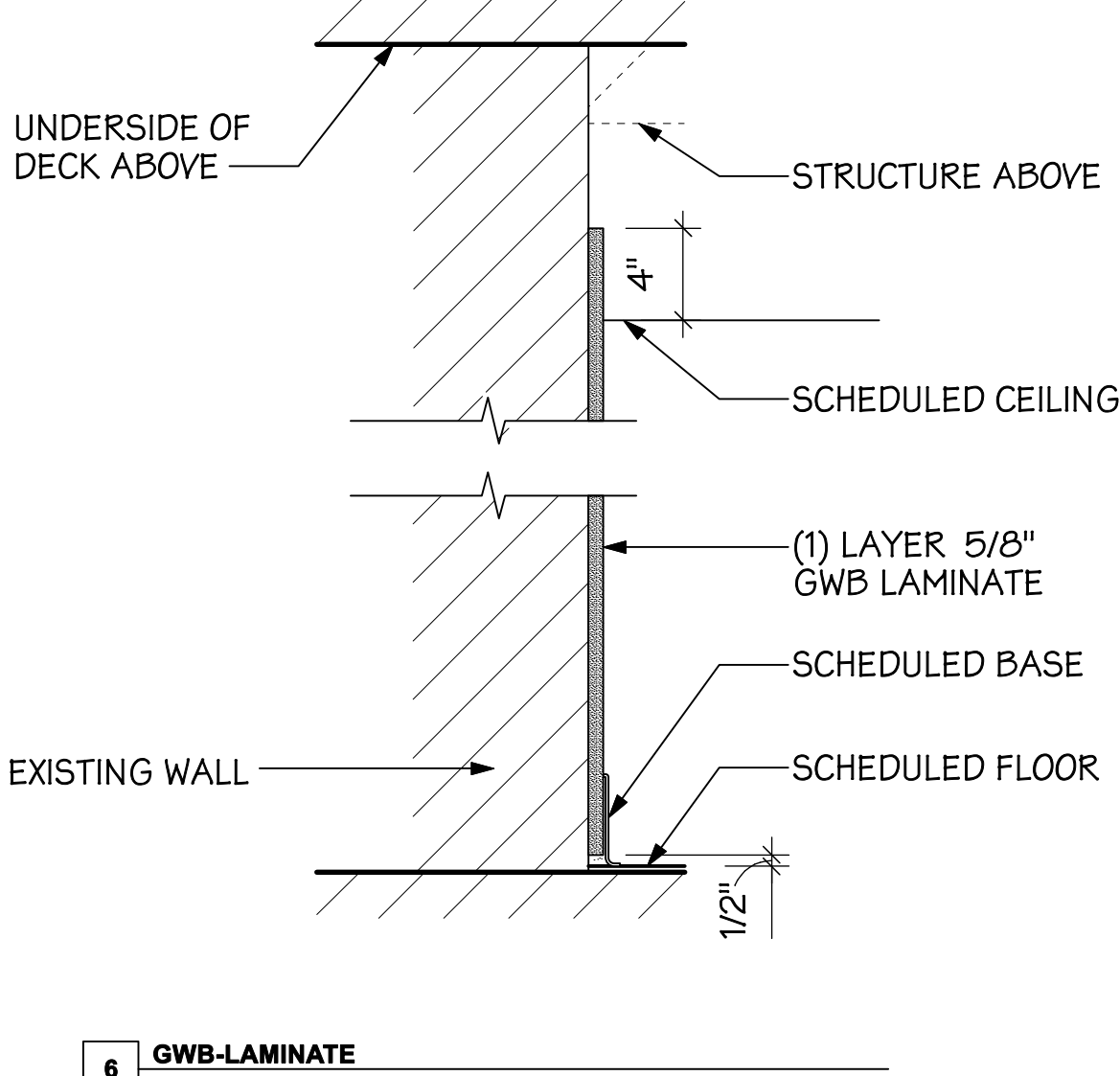
HARDWARE SET NUMBER: 8				
QTY	DESCRIPTION	PART #	MANUF.	FINISH
1	CENTER PIVOT SET	-	YALE	626
1	PRIVACY LOCK	-	YALE	626
1	RESCUE STOP	-	YALE	626
1	KICK PLATE	-	-	626
3	SILENCERS	L03011	TRIMCO	GREY
1	WALL STOP	L02101	TRIMCO	626
1	STONE THRESHOLD - ADA	-	-	-
HARDWARE SET NUMBER: 9				
QTY	DESCRIPTION	PART #	MANUF.	FINISH
6	HINGES	-	YALE	626
1	ELECTRIC LOCKSET	CCR-889FL-K660	YALE	626
2	CLOSER	-	YALE	626
2	PUSH BAR (TOP ROD ONLY)	-	-	626
2	AUTOMATIC OPERATOR	-	-	-
6	SILENCERS	L03011	TRIMCO	GREY
2	WALL STOP	L02101	TRIMCO	CONVEX
HARDWARE SET NUMBER: 10				
QTY	DESCRIPTION	PART #	MANUF.	FINISH
6	HINGES	-	YALE	626
2	STATIONARY PULLS	-	YALE	626
2	OVERHEAD MAGS	-	YALE	626
1	FLOOR STOP	L02121	TRIMCO	GREY
1	WALL STOP	L02101	TRIMCO	CONVEX

HARDWARE SET NUMBER: 5				
QTY	DESCRIPTION	PART #	MANUF.	FINISH
3	HINGES	-	YALE	626
1	ELECTRIC LOCKSET	CCR-889FL-K660	YALE	626
1	CLOSER	-	YALE	626
1	KICK PLATE	J102	DON-JO	626
3	SILENCERS	L03011	TRIMCO	GREY
1	WALL STOP	L02101	TRIMCO	CONVEX
HARDWARE SET NUMBER: 6				
QTY	DESCRIPTION	PART #	MANUF.	FINISH
3	HINGES	-	YALE	626
1	LOCKSET	CCR-889FL-K660	YALE	626
1	CLOSER	-	YALE	626
1	KICK PLATE	J102	DON-JO	626
3	SILENCERS	L03011	TRIMCO	GREY
1	WALL STOP	L02101	TRIMCO	CONVEX
HARDWARE SET NUMBER: 7				
QTY	DESCRIPTION	PART #	MANUF.	FINISH
3	HINGES	-	YALE	626
1	KEYED PRIVACY IND. LOCK	CCR-889FL-K660	YALE	626
1	CLOSER	-	YALE	626
1	KICK PLATE	-	-	626
1	MOP PLATE @ INSING DOORS	-	-	626
3	SILENCERS	L03011	TRIMCO	GREY
1	WALL STOP	L02101	TRIMCO	CONVEX
1	STONE THRESHOLD - ADA	-	-	-

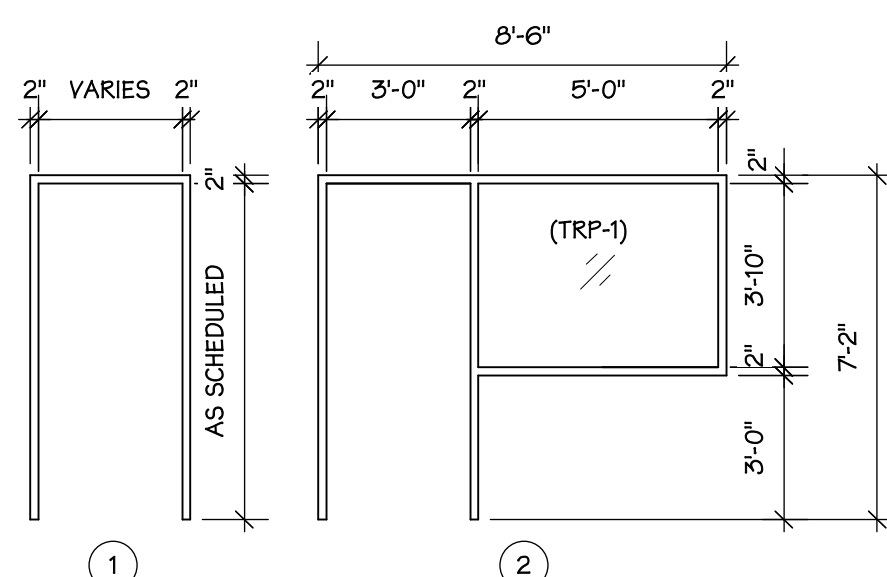
HARDWARE SET NUMBER: 1				
QTY	DESCRIPTION	PART #	MANUF.	FINISH
3	HINGES	-	YALE	626
1	ELECTRIC LOCKSET	CCR-889FL-K660	YALE	626
1	KICK PLATE	J102	DON-JO	626
3	SILENCERS	L03011	TRIMCO	GREY
1	WALL STOP	L02101	TRIMCO	CONVEX
HARDWARE SET NUMBER: 2				
QTY	DESCRIPTION	PART #	MANUF.	FINISH
3	HINGES	-	YALE	626
1	LOCKSET	CCR-889FL-K660	YALE	626
1	KICK PLATE	J102	DON-JO	626
3	SILENCERS	L03011	TRIMCO	GREY
1	WALL STOP	L02101	TRIMCO	CONVEX
HARDWARE SET NUMBER: 3				
QTY	DESCRIPTION	PART #	MANUF.	FINISH
3	HINGES	-	YALE	626
1	LOCKSET	CCR-889FL-K660	YALE	626
1	KICK PLATE	J102	DON-JO	626
3	SILENCERS	L03011	TRIMCO	GREY
1	WALL STOP	L02101	TRIMCO	CONVEX
HARDWARE SET NUMBER: 4				
QTY	DESCRIPTION	PART #	MANUF.	FINISH
1	CONTINUOUS HINGE	-	YALE	626
1	LOCKSET	CCR-889FL-K660	YALE	626
1	KICK PLATE	J102	DON-JO	626
3	SILENCERS	L03011	TRIMCO	GREY
1	WALL STOP	L02101	TRIMCO	CONVEX

NOTE:  
ALL DOORS TO HAVE WALL STOPS UNLESS NOTED OTHERWISE ON DOOR SCHEDULE.

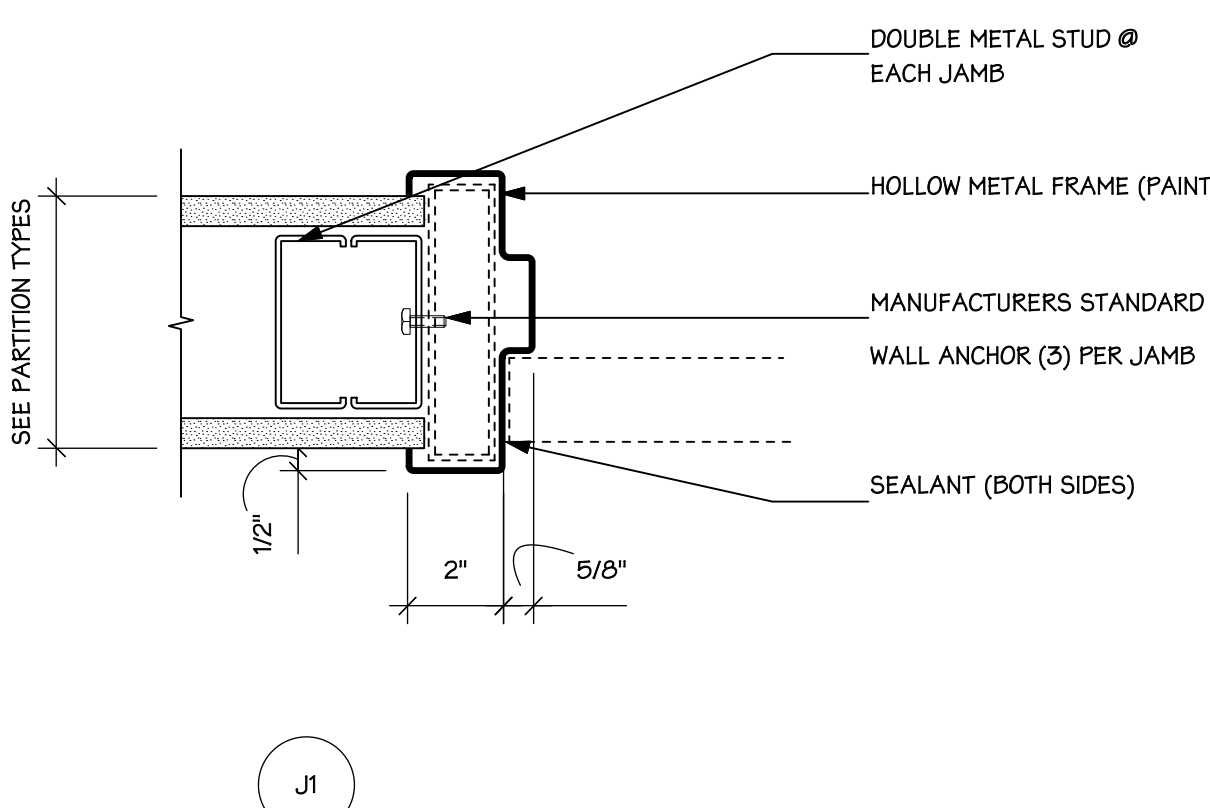
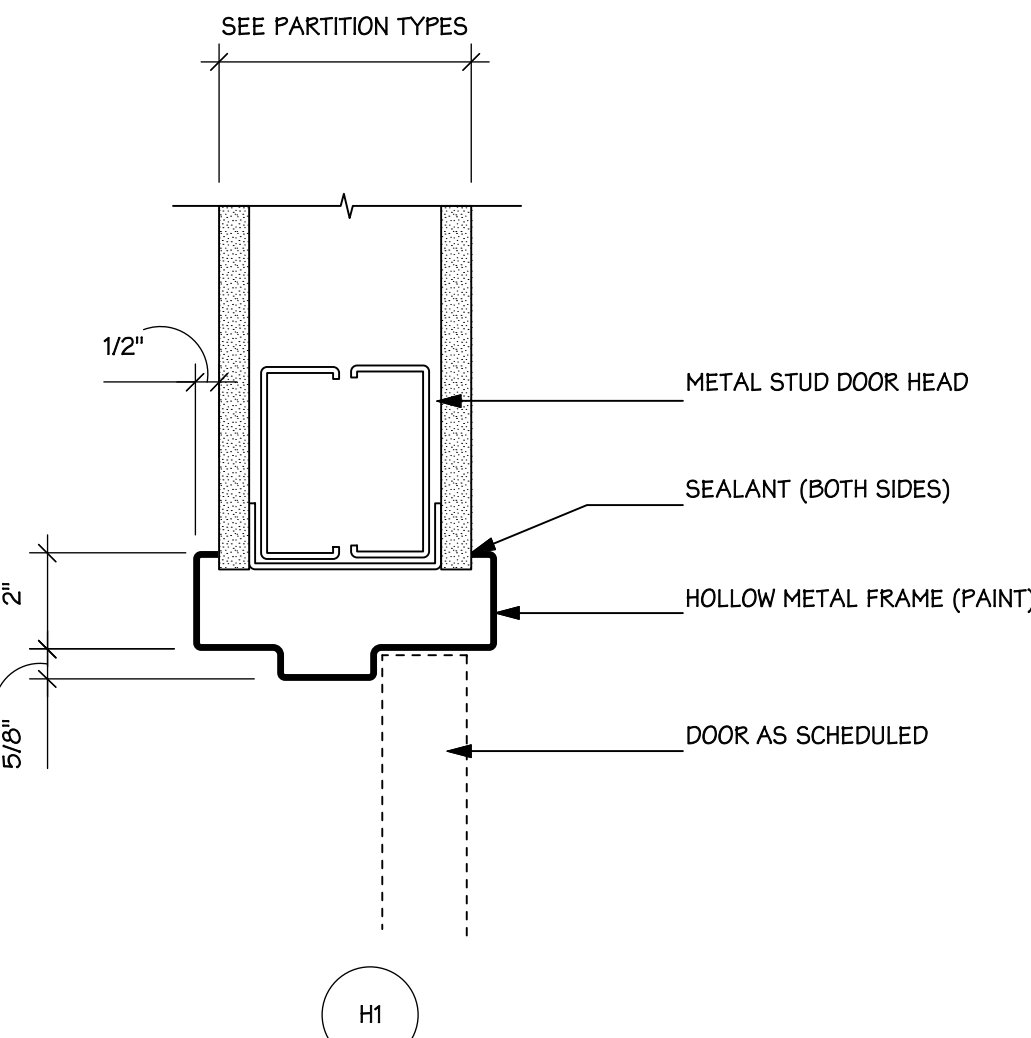
DOOR AND FRAME SCHEDULE														
DOOR							FRAME				GENERAL			
DOOR NO.	TYPE	MATERIAL	GLAZING	SIZE			TYPE	MATERIAL	GLAZING	DETAILS		LABEL	HDWR	REMARKS
				WIDTH	HEIGHT	THICKNESS				HEAD	JAMB			
952	EXG	EXG	-	3'4"	6'8"	1 3/4"	EXG	EXG	-	EXG	EXG	EXG	5	(2)(8)
A241	P-D	WD	CTG	6'0"	7'0"	1 3/4"	1	HM	-	H1	J1	-	9	(4)
C900	A	WD	-	3'0"	7'0"	1 3/4"	1	HM	-	H1	J1	-	2	-
C902	A	WD	-	3'0"	7'0"	1 3/4"	1	HM	-	H1	J1	-	4	-
C903	A	WD	-	3'0"	7'0"	1 3/4"	1	HM	-	H1	J1	-	7	(7)
C904	EXG	EXG	EXG	8'0"	7'0"	1 3/4"	1	EXG	-	-	-	-	-	(9)
C904A	B	WD	CTG	3'0"	7'0"	1 3/4"	1	HM	-	H1	J1	-	2	-
C905	A	WD	-	3'6"	7'0"	1 3/4"	1	HM	-	H1	J1	-	6	(6)
C910	A	WD	-	3'0"	7'0"	1 3/4"	1	HM	-	H1	J1	-	4	(7)
C911	A	WD	-	3'0"	7'0"	1 3/4"	1	HM	-	H1	J1	-	4	(8)
C912	C	WD	CTG	3'0"	7'0"	1 3/4"	2	HM	TRP-1	H1	J1	-	2	(9)
C913	A	WD	-	3'0"	7'0"	1 3/4"	1	HM	-	H1	J1	-	2	-
C914	A	WD	-	3'0"	7'0"	1 3/4"	1	HM	-	H1	J1	-	3	-
C915	A	WD	-	3'0"	7'0"	1 3/4"	1	HM	-	H1	J1	-	4	(3)
C916	A	WD	-	3'0"	7'0"	1 3/4"	1	HM	-	H1	J1	45	5	(7)
C917	A	WD	-	3'0"	7'0"	1 3/4"	1	HM	-	H1	J1	-	4	(3)
C918	A	WD	-	3'0"	7'0"	1 3/4"	1	HM	-	H1	J1	-	1	(7)
C919	A	WD	-	3'0"	7'0"	1 3/4"	1	HM	-	H1	J1	-	8	(1)(7)
C920	A	WD	-	3'0"	7'0"	1 3/4"	1	HM	-	H1	J1	-	4	(3)
C921	A	WD	-	3'0"	7'0"	1 3/4"	1	HM	-	H1	J1	-	4	-
C921A	A	WD	-	3'0"	7'0"	1 3/4"	1	HM	-	H1	J1	-	8	(1)(7)(10)
C922	A	WD	-	3'0"	7'0"	1 3/4"	1	HM	-	H1	J1	-	4	(3)
C923	A	WD	-	3'0"	7'0"	1 3/4"	1	HM	-	H1	J1	-	4	-
C923A	A	WD	-	3'0"	7'0"	1 3/4"	1	HM	-	H1	J1	-	8	(1)(7)(10)
C923B	P-A	WD	-	4'0"	7'0"	1 3/4"	1	HM	-	H1	J1	-	10	-
C924	B	WD	CTG	3'0"	7'0"	1 3/4"	1	HM	-	H1	J1	-	2	-
C925	A	WD	-	2'6"	7'0"	1 3/4"	1	HM	-	H1	J1	-	7	(3)(7)
C926	A	WD	-	3'0"	7'0"	1 3/4"	1	HM	-	H1	J1	-	7	(7)
KEYED NOTES														
(1) PROVIDE RESCUE HARDWARE														
(2) EXG. DOOR TO HAVE HAVE CARD READER ACCESS- COORD. W/ ELECTRICAL DWGS. VERIFY IN FIELD COMPATIBILITY OF SPECIFIED HDWR W/ EXG. CONDITIONS.														
(3) PROVIDE FLOOR STOP (#L02212, MFR: TRIMCO, CONVEX)														
(4) AUTOMATIC DOOR W/ BODY GUARD SENSOR AND FAIL SECURE LATCHING W/ PUSH BAR														
(5) SEE FINISH LEGEND ON SHEET AS-602 FOR TRANSLUCENT RESIN PANEL														
(6) PROVIDE HOLD OPEN DOOR CLOSER														
(7) DOOR LEAF TO BE UNDERCUT														
(8) EXG. HM DOOR AND FRAME TO BE PAINTED PNT-5														
(9) EXG. RELOCATED DOOR FROM THE 2ND FLOOR WOMEN'S CLINIC. PROVIDE NEW DOOR #A241 AT SECOND FLOOR TO REPLACE RELOCATED DOOR.														
(10) PROVIDE (2) WALL STOPS FOR DOORS WITH RESCUE HARDWARE.														



3 DOOR ELEVATIONS  
1/4" = 1'-0"



2 DOOR FRAMES  
1/4" = 1'-0"



1 DOOR HEAD & JAMB DETAILS  
3" = 1'-0"

AMENDMENT NO. 2	02/08/2013
Revisions:	Date

CONSULTANTS:
--------------

ARCHITECT/ENGINEERS:

Drawing Title DOOR SCHEDULE, PARTITION TYPES, & DETAILS
Approved: Project Director

Project Title RENOVATE FOR WOMEN'S CLINIC
Location 800 IRVING AVENUE, SYRACUSE NY 13210
Date 02.08.2013
Checked KAD
Drawn LMB

Project Number VA# 528A7-13-701 DA# 12-001 Building Number 1
Drawing Number AS-601
Dwg. 15 of 41

