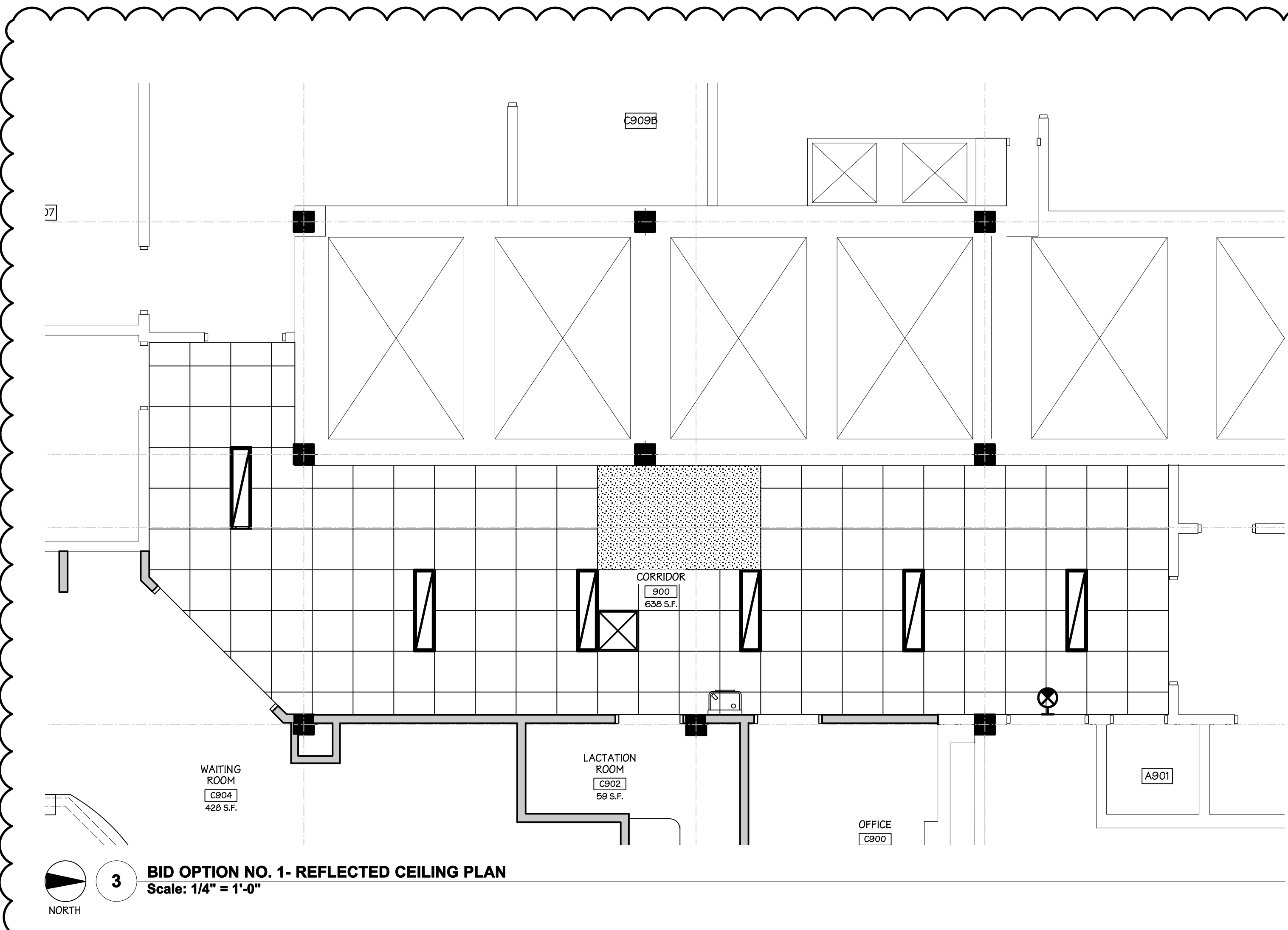
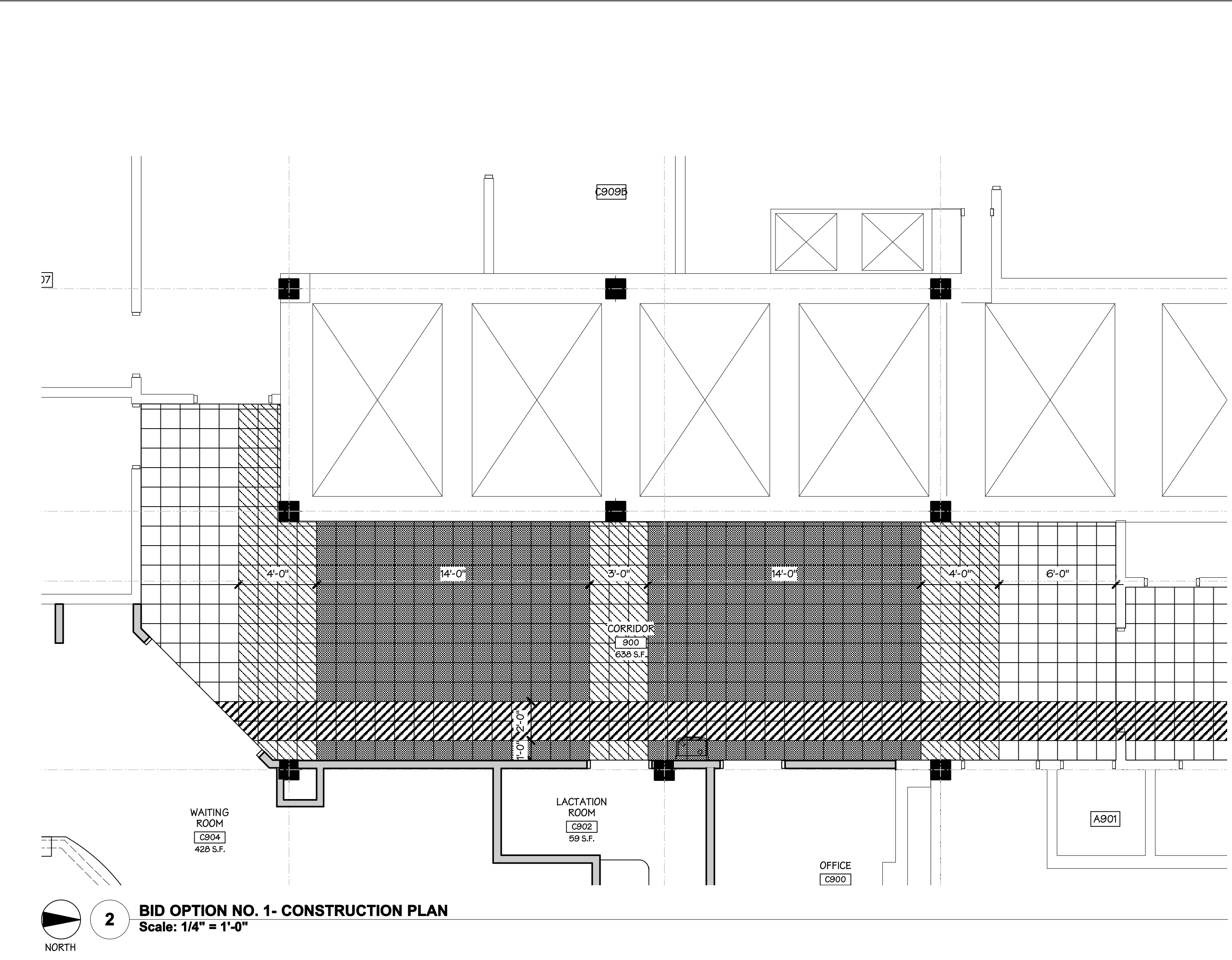


three eighths inch = one foot
one half inch = one foot
one quarter inch = one foot
one eighth inch = one foot

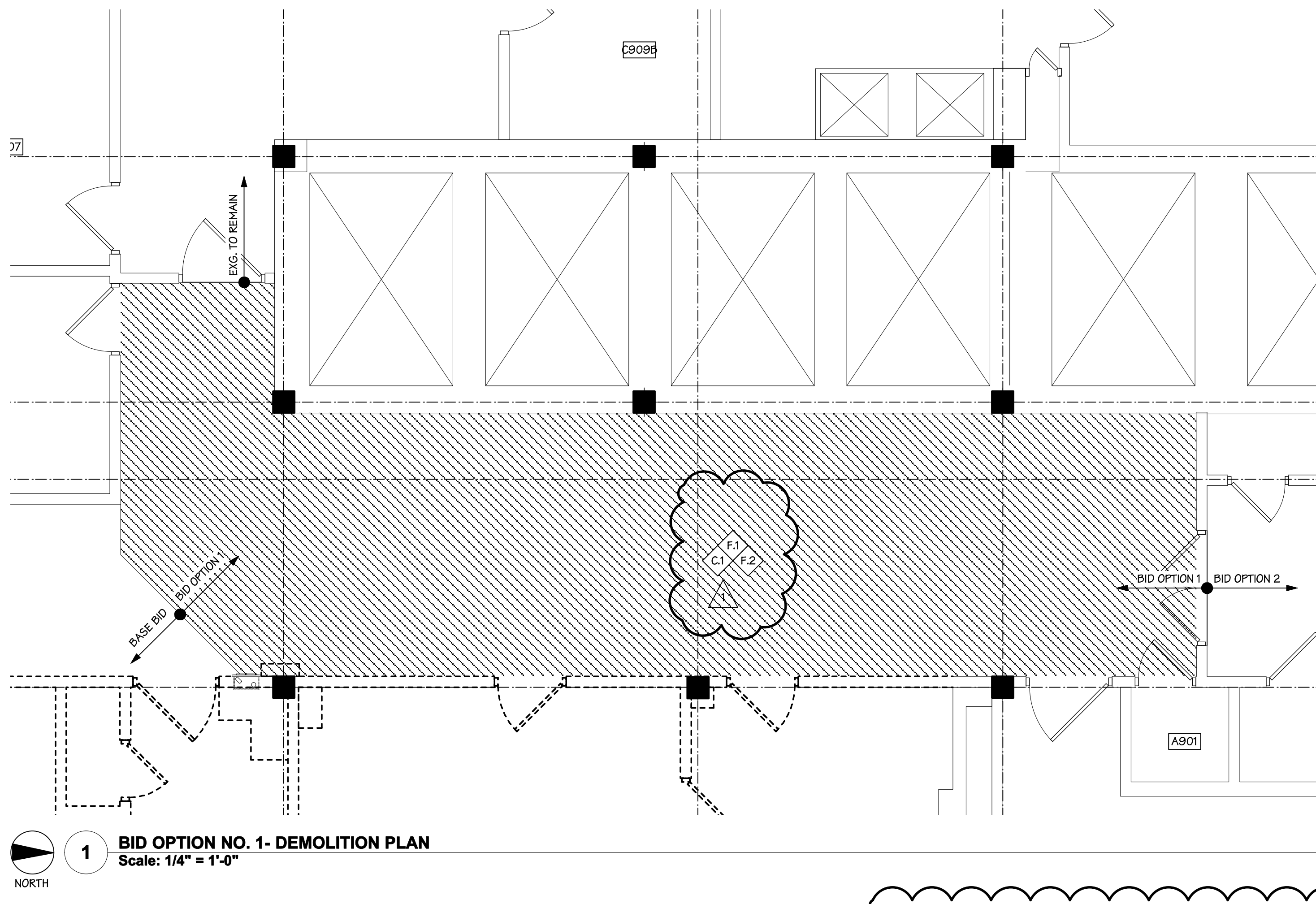


- ### GENERAL NOTES
1. UNLESS NOTED OTHERWISE, ALL CEILING HEIGHTS ARE TO BE 7'-7" A.F.F.
 2. ALL CEILING MOUNTED ITEMS CUT INTO TILES SHALL BE MOUNTED IN THE CENTER OF THE TILE UNLESS SPECIFICALLY NOTED AS OTHERWISE.
 3. SUSPENDED CEILING GRID SHALL BE ARRANGED SO THAT GRID IS SPACED EQUALLY FROM MOST REMOTE WALL IN EACH DIRECTION WITH NO TILE LESS THAN 6" WIDE UNLESS SPECIFICALLY NOTED OTHERWISE.
 4. CEILING PLANS DO NOT INDICATE ALL ELECTRICAL AND MECHANICAL EQUIPMENT. EQUIPMENT SHOWN IS FOR LOCATING PURPOSES ONLY. REFER TO MECHANICAL AND PLUMBING PLANS FOR SUCH EQUIPMENT.
 5. PATCH AND SECURE EXISTING CEILING AND INSULATION SCHEDULED TO REMAIN PRIOR TO INSTALLATION OF NEW CEILING. REPLACE CEILING INSULATION AND CEILING MATERIAL TO MATCH EXISTING WHERE IT IS MISSING.

- ### CEILING SYMBOLS
- 2x2 ACOUSTIC CEILING TILE
 - GWB CEILING OR SOFFIT
 - CEILING HEIGHT INDICATOR
 - 1x4 FLUORESCENT LIGHT FIXTURE
 - 2x2 FLUORESCENT LIGHT FIXTURE
 - CEILING MOUNTED EXIT LIGHT
 - WALL MOUNTED EXIT LIGHT
 - SUPPLY DIFFUSER
 - RETURN DIFFUSER

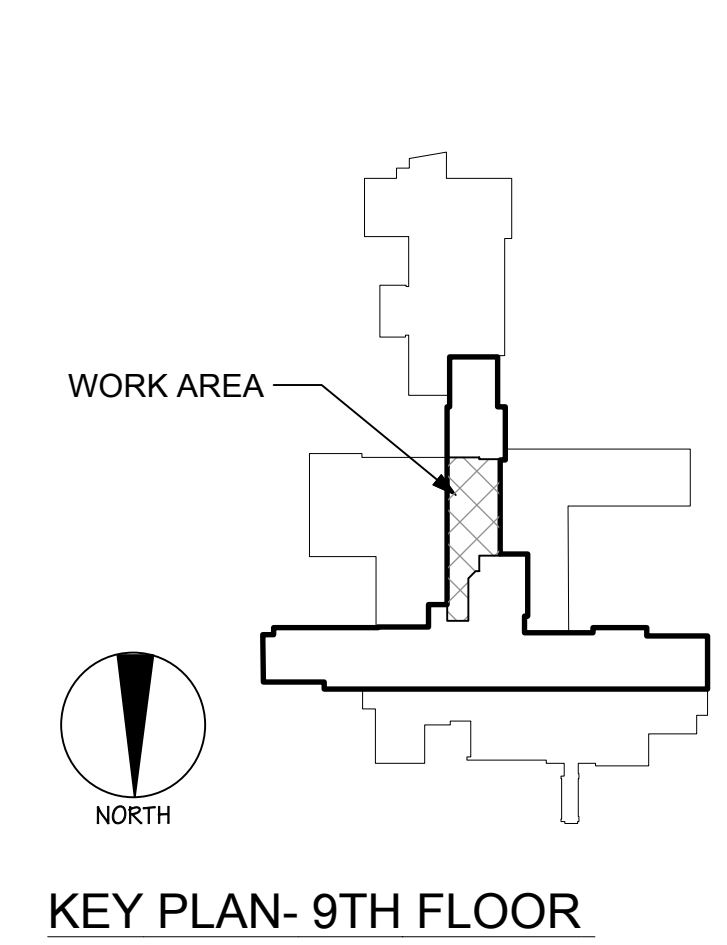


- ### FLOOR PATTERN LEGEND
- PRODUCT: FRITZTILE
STYLE: KGLASS COLLECTION
COLOR: HEFEWEIZEN (R68201)
SIZE: 12" x 12"
 - PRODUCT: FRITZTILE
STYLE: NATURAL QUARRY COLLECTION
COLOR: GREEK STONE (Q160504)
SIZE: 12" x 12"
 - PRODUCT: FRITZTILE
STYLE: NATURAL QUARRY COLLECTION
COLOR: CORPORATE GRAY (Q160297)
SIZE: 12" x 12"
 - PRODUCT: FRITZTILE
STYLE: NATURAL QUARRY COLLECTION
COLOR: AUTUMN (Q16027)
SIZE: 12" x 12"
 - NOTE: CUT FRITZTILE TO 6" HEIGHT FOR WALL BASE.
 - PRODUCT: TANDUS POWERBOND
STYLE: ATMOSPHERE #03666
COLOR: KAKEI SPRING #49811
SIZE: ROLL, WELDED SEAMS
 - WALL BASE: 8" RUBBER BASE
MFR: JOHNSONITE
STYLE: MILLWORK REVEAL #MW-150-F8
COLOR: #150 WETLANDS



- ### GENERAL NOTES
1. INDICATES AREA OF ASBESTOS TILE REMOVAL. COORDINATE WITH HA-100 FOR MORE INFORMATION.
 2. REFER TO AD-101 FOR BASE BID DEMOLITION PLAN AND NOTES.

- ### KEYED NOTES
- #### C - CEILING DEMOLITION
- C.1 REMOVE LAY-IN CEILING, SUSPENSION SYSTEM, SOFFITS, AND ALL ATTACHMENTS COMPLETE. PATCH WALLS TO MATCH ADJACENT FINISHED SURFACES AND PREPARE FOR INSTALLATION OF NEW CEILING AS SCHEDULED. COORDINATE WITH REFLECTED CEILING PLAN FOR MORE INFORMATION.
- #### F - FLOOR DEMOLITION
- F.1 REMOVE TERRAZZO WALL BASE COMPLETE, FLASH PATCH AND PREPARE SLAB FOR NEW FINISH IN MANNER REQUIRED BY NEW FINISH MANUFACTURER.
 - F.2 REMOVE ASBESTOS TILE AND COORD. W/ DRAWING HA-100 FOR ASBESTOS MATERIAL REMOVAL DRAWINGS AND NOTES. PROVIDE FLOWABLE FLOOR FILL (GYPCRETE OR EQUAL) AT ABATED FLOOR AREAS.
 - F.3 REMOVE CARPET (INCLUDING ANY TRANSITION STRIPS OR OTHER EDGING MATERIALS) AND ASBESTOS MATERIAL. COORD. W/ DRAWING HA-100 FOR ASBESTOS MATERIAL REMOVAL DRAWINGS AND NOTES. PROVIDE FLOWABLE FLOOR FILL (GYPCRETE OR EQUAL) AT ABATED FLOOR AREAS. AND PREPARE SLAB FOR NEW FINISH IN MANNER REQUIRED BY NEW FINISH MANUFACTURER.
 - F.4 REMOVE CARPET WALL BASE. PATCH AND PREPARE WALLS AS REQUIRED FOR NEW FINISH IN MANNER REQUIRED BY NEW FINISH MANUFACTURER.



AMENDMENT NO. 2	02/08/2013
Revisions:	Date

CONSULTANTS:

ARCHITECT/ENGINEERS:

dwyer ARCHITECTURAL
SYRACUSE
313 East Willow Street
Suite 107
Syracuse, NY 13203
ph: 315.473.1800

ROCHESTER
1344 University Avenue
Suite 140
Rochester, NY 14607
ph: 585.461.4771

IPD: Engineering
INTEGRATED PROJECT DELIVERY
ONE WEBSTER'S LANDING
SYRACUSE, NEW YORK 13202
315.423.0185

Drawing Title
**BID OPTION NO. 1
PLANS & NOTES**

Approved: Project Director

Project Title
RENOVATE FOR WOMEN'S CLINIC

Location
800 IRVING AVENUE, SYRACUSE NY 13210

Date
02.08.2013

Checked
KAD

Drawn
LMB

Project Number
VA# 528A7-13-701
DA# 12-001
Building Number
1

Drawing Number
GI-201

Dwg. 4 of 41

