

GENERAL NOTES

1. INDICATES AREA OF ASBESTOS TILE REMOVAL. COORDINATE WITH HA-100 FOR MORE INFORMATION.

2. REFER TO AD-101 FOR BASE BID DEMOLITION PLAN AND NOTES.

KEYED NOTES

C - CEILING DEMOLITION

C.1 REMOVE LAY-IN CEILING, SUSPENSION SYSTEM, SOFFITS, AND ALL ATTACHMENTS COMPLETE. PATCH WALLS TO MATCH ADJACENT FINISHED SURFACES AND PREPARE FOR INSTALLATION OF NEW CEILING AS SCHEDULED. COORDINATE WITH REFLECTED CEILING PLAN FOR MORE INFORMATION.

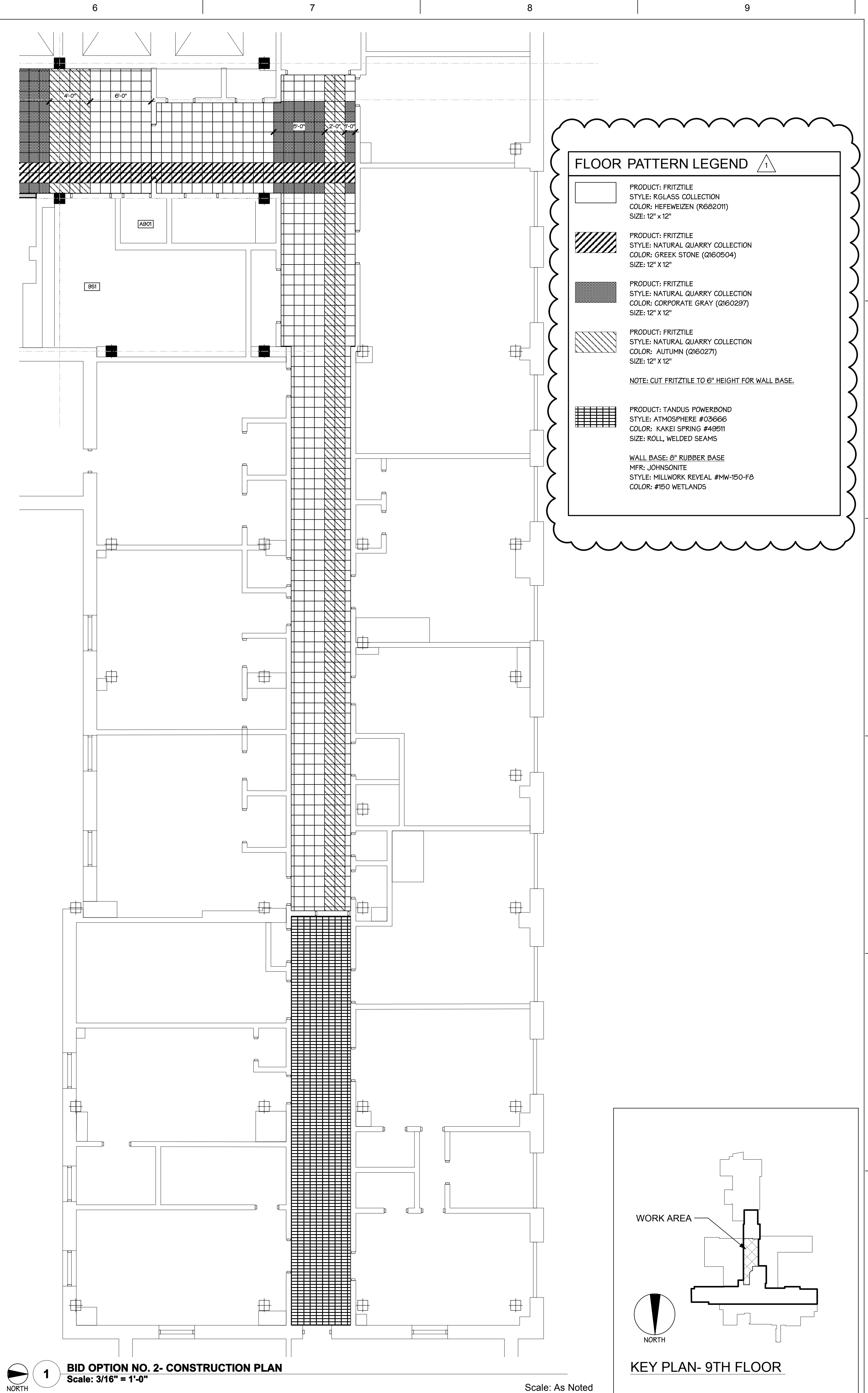
F - FLOOR DEMOLITION

F.1 REMOVE TERRAZZO WALL BASE COMPLETE. FLASH PATCH AND PREPARE SLAB FOR NEW FINISH IN MANNER REQUIRED BY NEW FINISH MANUFACTURER.

F.2 REMOVE ASBESTOS TILE AND COORD. W/ DRAWING HA-100 FOR ASBESTOS MATERIAL REMOVAL DRAWINGS AND NOTES. PROVIDE FLOWABLE FLOOR FILL (GYPCRETE OR EQUAL) AT ABATED FLOOR AREAS.

F.3 REMOVE CARPET (INCLUDING ANY TRANSITION STRIPS OR OTHER EDGING MATERIALS) AND ASBESTOS MATERIAL. COORD. W/ DRAWING HA-100 FOR ASBESTOS MATERIAL REMOVAL DRAWINGS AND NOTES. PROVIDE FLOWABLE FLOOR FILL (GYPCRETE OR EQUAL) AT ABATED FLOOR AREAS. AND PREPARE SLAB FOR NEW FINISH IN MANNER REQUIRED BY NEW FINISH MANUFACTURER.

F.4 REMOVE CARPET WALL BASE. PATCH AND PREPARE WALLS AS REQUIRED FOR NEW FINISH IN MANNER REQUIRED BY NEW FINISH MANUFACTURER.



FLOOR PATTERN LEGEND

PRODUCT: FRITZTILE
STYLE: RGLASS COLLECTION
COLOR: HEFEWEIZEN (R6B201)
SIZE: 12" X 12"

PRODUCT: FRITZTILE
STYLE: NATURAL QUARRY COLLECTION
COLOR: GREEK STONE (Q160504)
SIZE: 12" X 12"

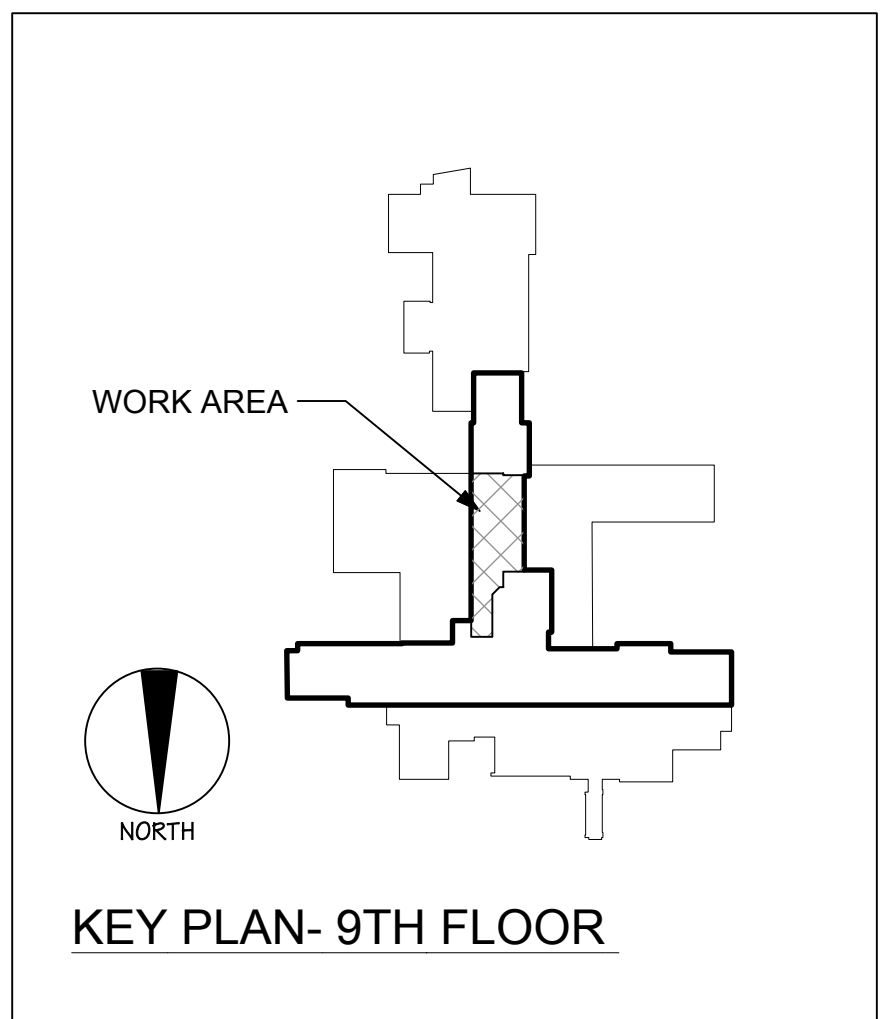
PRODUCT: FRITZTILE
STYLE: NATURAL QUARRY COLLECTION
COLOR: CORPORATE GRAY (Q160297)
SIZE: 12" X 12"

PRODUCT: FRITZTILE
STYLE: NATURAL QUARRY COLLECTION
COLOR: AUTUMN (Q160277)
SIZE: 12" X 12"

NOTE: CUT FRITZTILE TO 6" HEIGHT FOR WALL BASE.

PRODUCT: TANDUS POWERBOND
STYLE: ATMOSPHERE #03606
COLOR: KAKEI SPRING #49511
SIZE: ROLL, WELDED SEAMS

WALL BASE: 6" RUBBER BASE
HFR: JOHNSONITE
STYLE: MILLWORK REVEAL #MW-150-FB
COLOR: #150 WETLANDS



| | | | | | | | | | | | |
|------------------------|--|---|--|---|--|---|--|---|--|---------------------------------|--|
| CONSULTANTS: | | ARCHITECT/ENGINEERS: | | BID OPTION NO. 2 PLANS & NOTES | | Project Title RENOVATE FOR WOMEN'S CLINIC | | Project Number VA# 528A7-13-701 DA# 12-001 Building Number 1 | | | |
| | | SYRACUSE 313 East Willow Street Suite 107 Syracuse, NY 13203 ph: 315.473.1800 | | ROCHESTER 1344 University Avenue Suite 140 Rochester, NY 14607 ph: 585.461.4771 | | Approved: Project Director | | Location 800 IRVING AVENUE, SYRACUSE NY 13210 | | Drawing Number GI-202 | |
| | | | | | | | | Date 02.08.2013 | | Checked KAD | |
| | | | | | | | | Drawn LMB | | Dwg. 5 of 41 | |
| Revisions: | | | | | | | | | | | |
| AMENDMENT NO. 2 | | | | | | | | | | | |
| Date | | | | | | | | | | | |