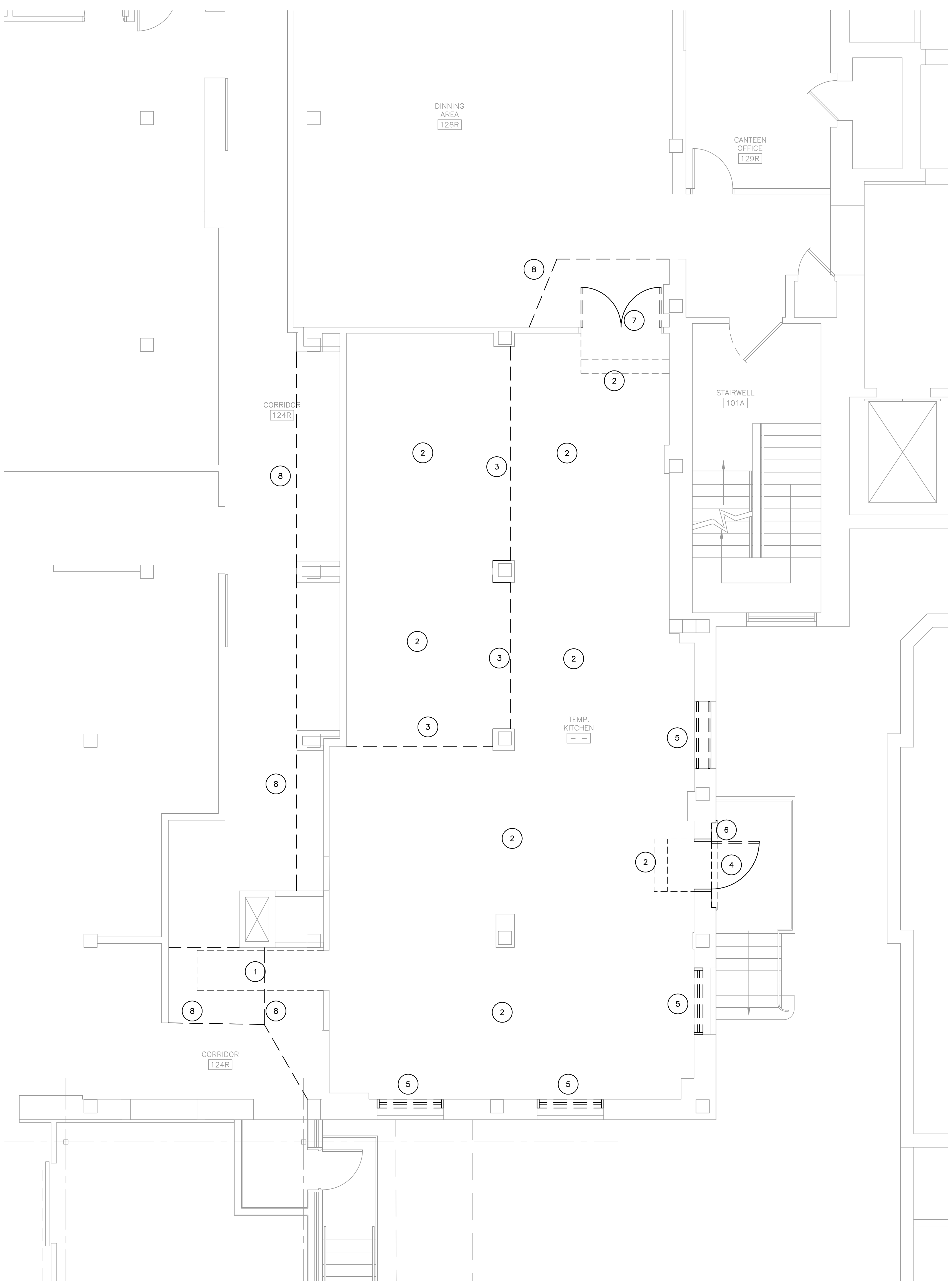
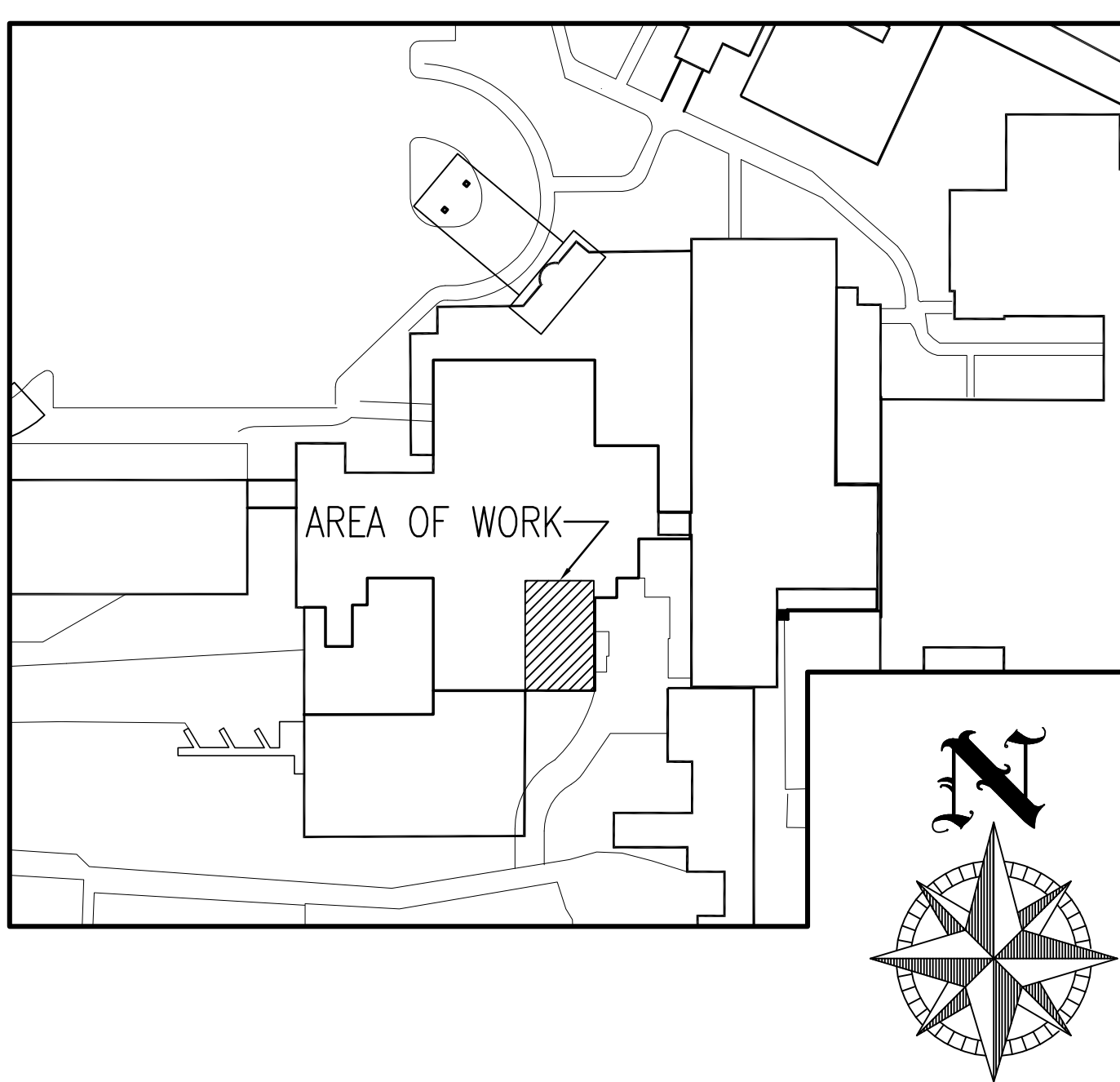


three inches = one foot
one and one half inches = one foot
one inch = one foot
three quarters inch = one foot
one half inch = one foot
three eighths inch = one foot
one quarter inch = one foot
one eighth inch = one foot



- GENERAL NOTES**
- THE WORDS DEMOLISH AND REMOVE REFER TO COMPLETE DEMOLITIONS AND REMOVAL FROM THE SITE OF ITEMS INDICATED. DO NOT REUSE ITEMS REMOVED UNLESS SPECIFICALLY DIRECTED TO DO SO.
 - PROTECT ALL PORTIONS OF THE EXISTING CONSTRUCTION NOT INDICATED TO BE DEMOLISHED OR REMOVED.
 - COORDINATE ALL WORK OUTSIDE THE ENCLOSED PROJECT AREA WITH COTR. WORK OUTSIDE THE AREA MAY REQUIRE AFTER HOURS OR WEEKEND WORK.
 - PROVIDE BARRIERS (AS DESCRIBED IN SPECIFICATION) AS NECESSARY AROUND ALL WORK PERFORMED OUTSIDE OF THE ENCLOSED WORK AREA.
 - COORDINATE ALL CONSTRUCTION ACTIVITY IN SPD STORAGE AREA BELOW RETAIL STORE WITH COTR. ALL WORK MUST BE COMPLETED BETWEEN 8:00PM FRIDAY AND 6:00AM SUNDAY.
 - GENERAL CONTRACTOR SHALL HAVE FINAL RESPONSIBILITY TO SEAL, PATCH, AND FIRE STOP ALL OPENINGS IN THE CONCRETE SLAB AND WALLS INCLUDING THOSE RESULTING FROM MECHANICAL, PLUMBING AND ELECTRICAL WORK.

- KEYED NOTES**
- REMOVE EXISTING RAMP AND GUARDRAIL. CLEAN FLOOR BEHIND. REPAIR CONCRETE FLOOR AS REQUIRED TO RECEIVE SCHEDULED FINISHES.
 - REMOVE EXISTING RAISED FLOOR (THROUGHOUT) AND STEPS. COORDINATE WITH MECHANICAL, PLUMBING, ELECTRICAL AND ALL OTHER TRADES. REPAIR CONCRETE FLOOR AS REQUIRED FOR INSTALLATION OF NEW FLOOR.
 - SEE SHEET A601 FOR REMOVAL OF CEILING AND OTHER CEILING DEMOLITION ITEMS. SALVAGE CEILING TILES AND DELIVER TO OWNER.
 - REMOVE EXISTING DOOR AND FRAME. COORDINATE WITH INSTALLATION OF NEW DOOR AND FRAME.
 - REMOVED EXISTING WINDOW AND INFILL. COORDINATE WITH INSTALLATION OF NEW FRAMING AND MASONRY INFILL.
 - REMOVE EXISTING STONE STOOP. SEE SHEET A103.
 - REMOVE EXISTING DOORS. RETAIN EXISTING FRAME.
 - TEMPORARY CONSTRUCTION PARTITIONS TO PROVIDE DUST-PROOF SEPARATIONS BETWEEN CONSTRUCTION AREAS AND ADJOINING AREAS. CONSTRUCT PARTITIONS SHALL CONFORM TO NFPA 241-04 AND SHALL CONSIST OF FIRE RETARDANT POLYETHYLENE FILM WITH A MINIMUM THICKNESS OF 6 MIL, OR OTHER FIRE RETARDANT TARPULINS, ON NONCOMBUSTIBLE SUBFRAME OR STRUCTURE FORMING A DUST-PROOF ENCLOSURE. SEAL SEAMS CONTINUOUSLY WITH DUCT TAPE, FILMS AND TARPULINS USED MUST MEET THE REQUIREMENTS OF NFPA 701 FOR FIRE RETARDANCY. EXACT LOCATION OF PARTITIONS TO BE AGREED TO WITH RESIDENT ENGINEER. REMOVE TEMPORARY CONSTRUCTIONS WHEN NO LONGER REQUIRED.



A CANTEN FLOOR PLAN
1/8" = 1'-0"

<div>Revisions:</div> <div>Date</div>		CONSULTANTS:		ARCHITECT/ENGINEERS:		Drawing Title FIRST FLOOR DEMOLITION PLAN Scale: AS NOTED		Project Title CANTEN RETAIL STORE Building Number 2		Project Number 636A6-10-712	
		BUILDING IS FULLY SPRINKLED		BROOKS BORG SKILES ARCHITECTURE ENGINEERING LLP 317 6th Avenue, Suite 400 Des Moines, IA 50309-4136 515 244 7167		Approved: Project Director		Location DES MOINES, IOWA		Drawing Number AD101 Dwg. 3 of 16	
				AE PROJECT NO. 10031				Date 11/01/2011	Checked SS	Drawn WES	