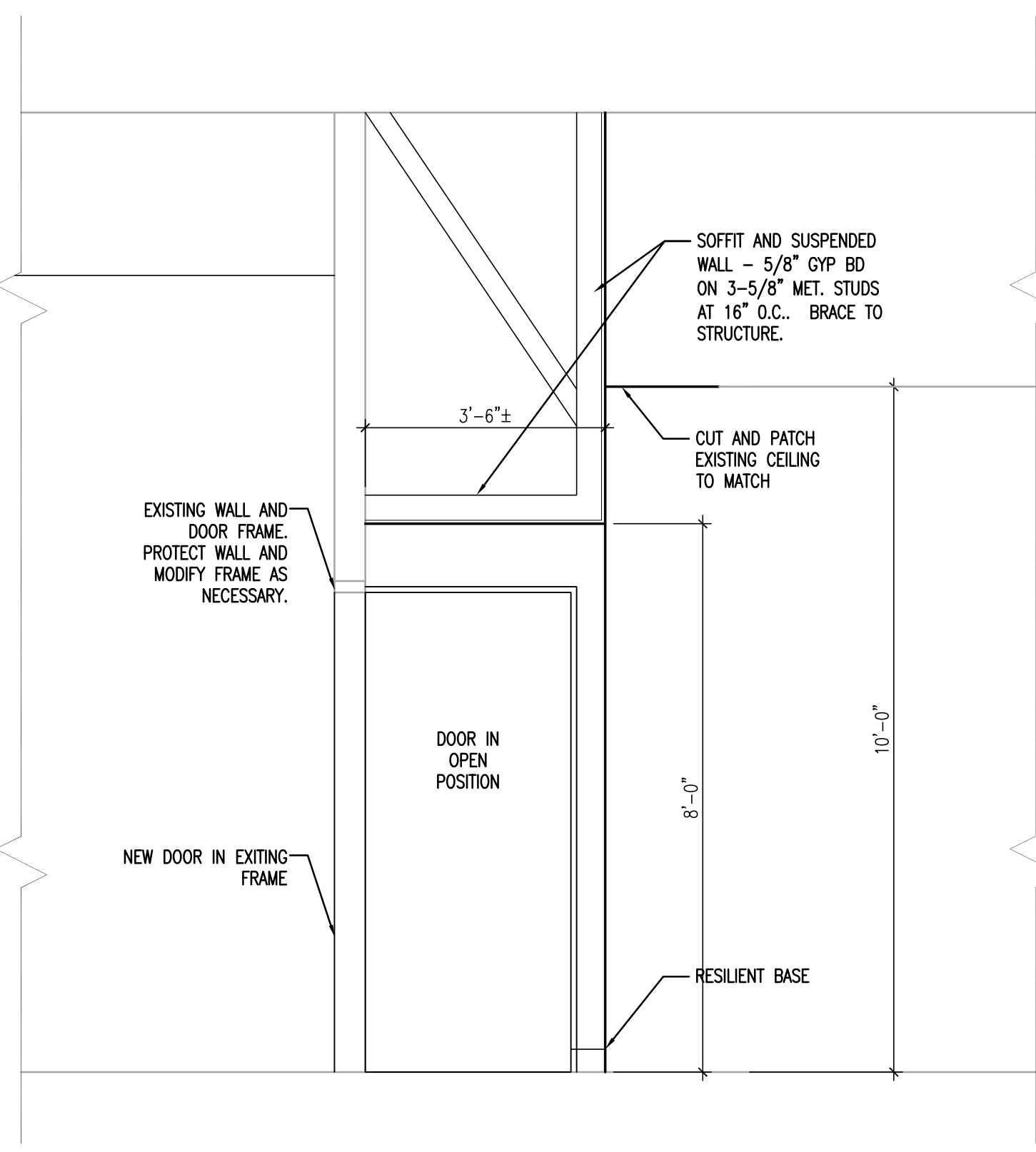
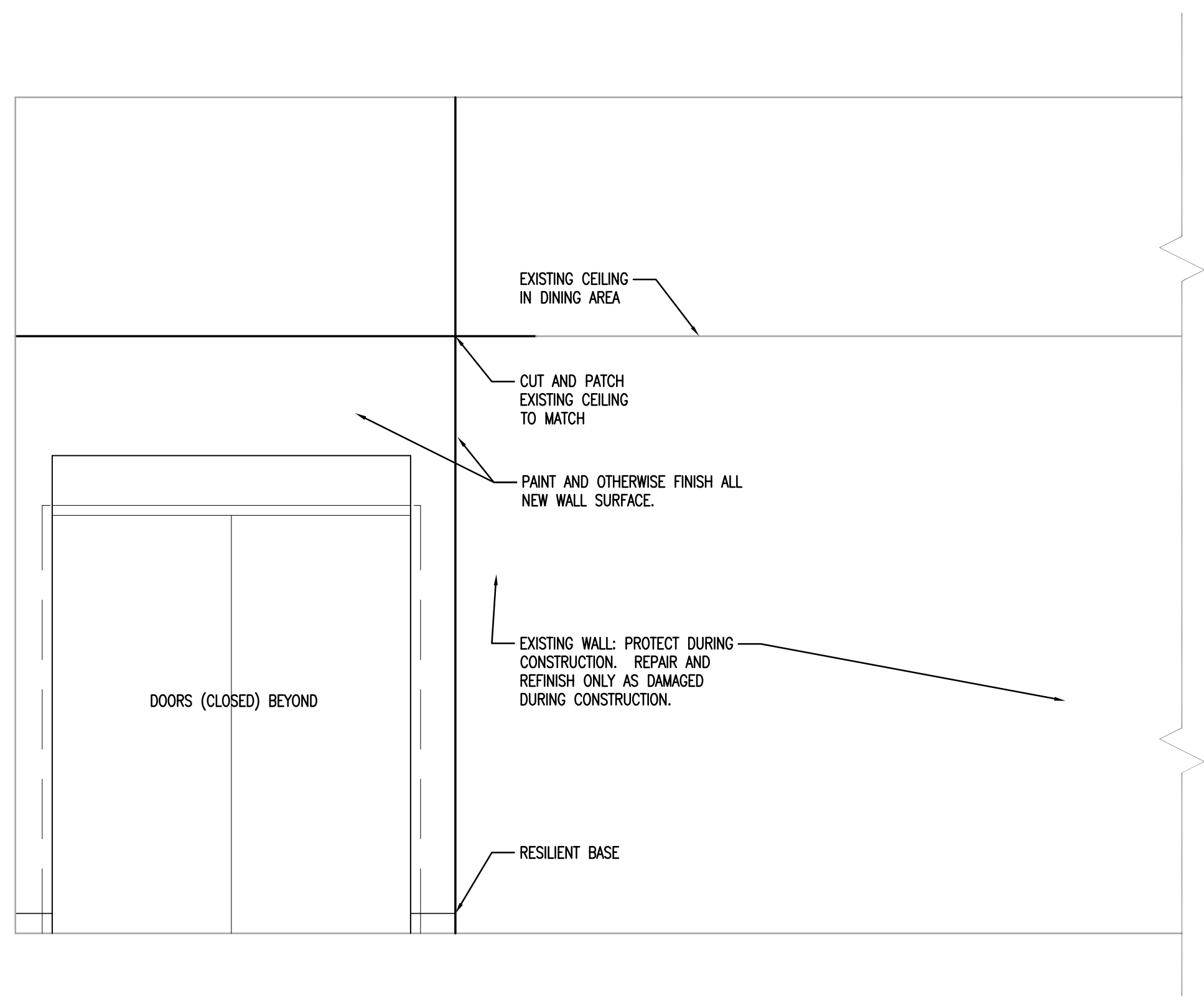


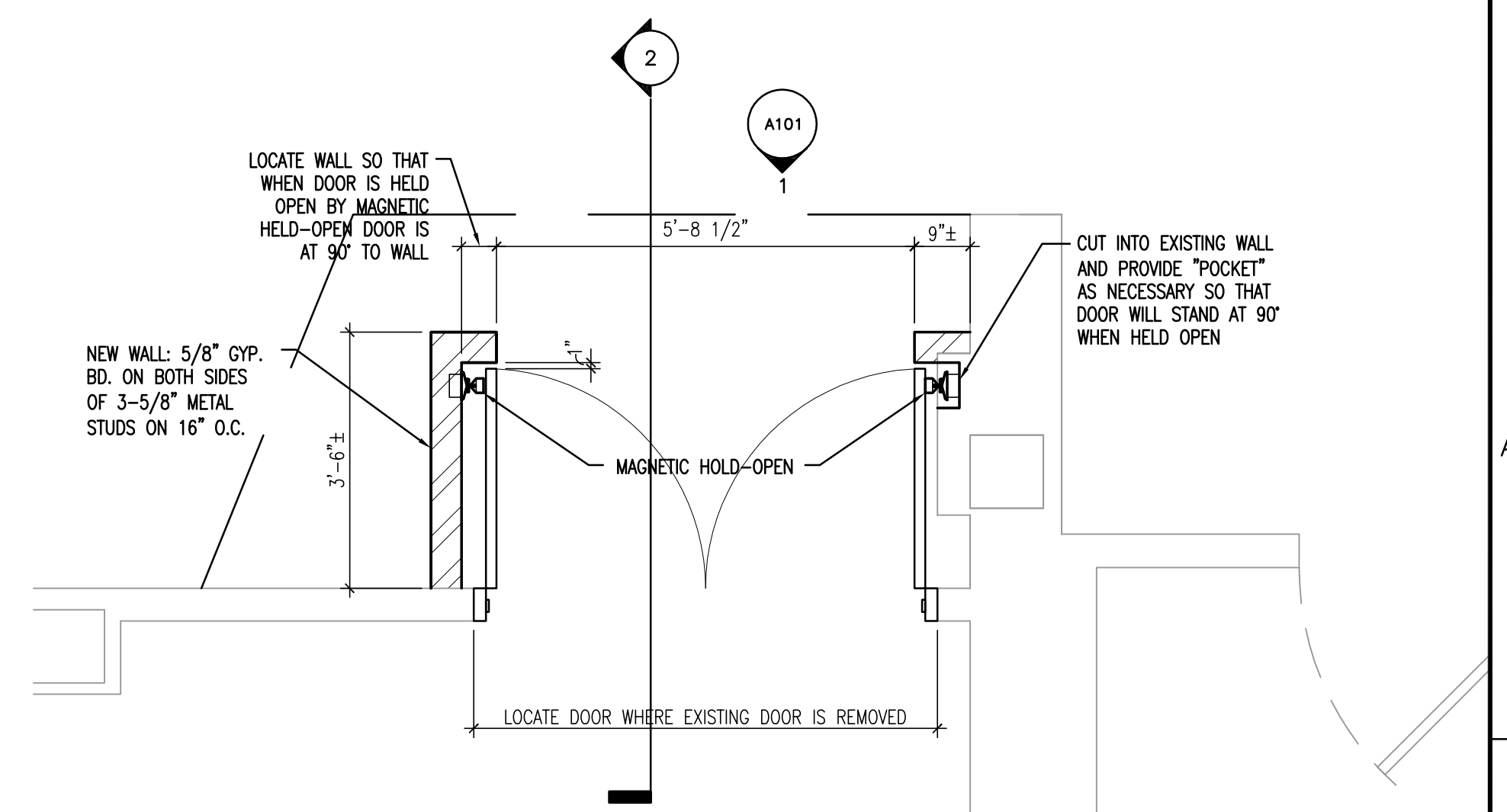
three inches = one foot  
one and one half inches = one foot  
one inch = one foot  
three quarters inch = one foot  
one half inch = one foot  
three eighths inch = one foot  
one quarter inch = one foot  
one eighth inch = one foot  
one eighth inch = one foot



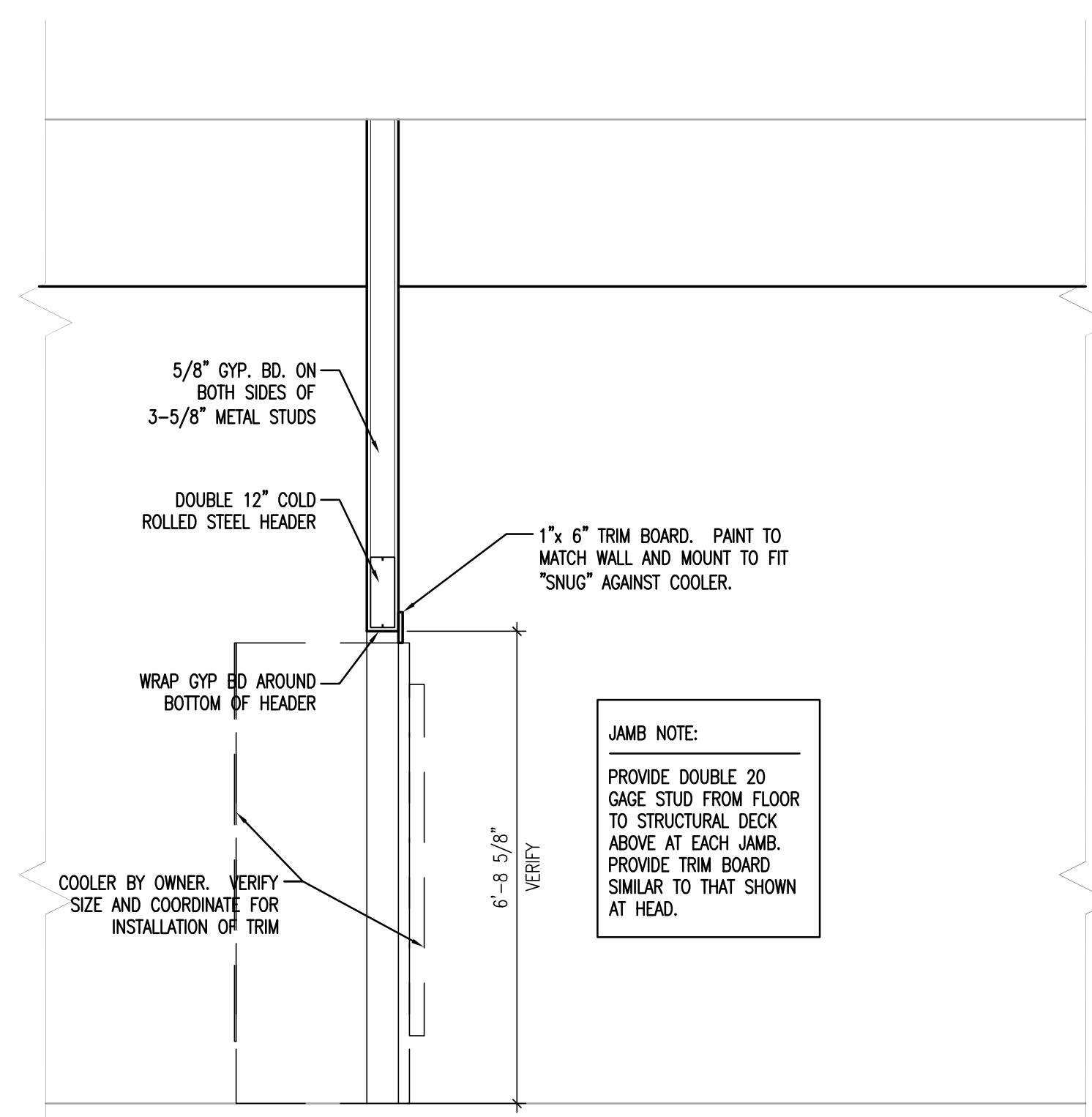
2 SECTION THROUGH ENTRY FROM DINING AREA  
1/2" = 1'-0"



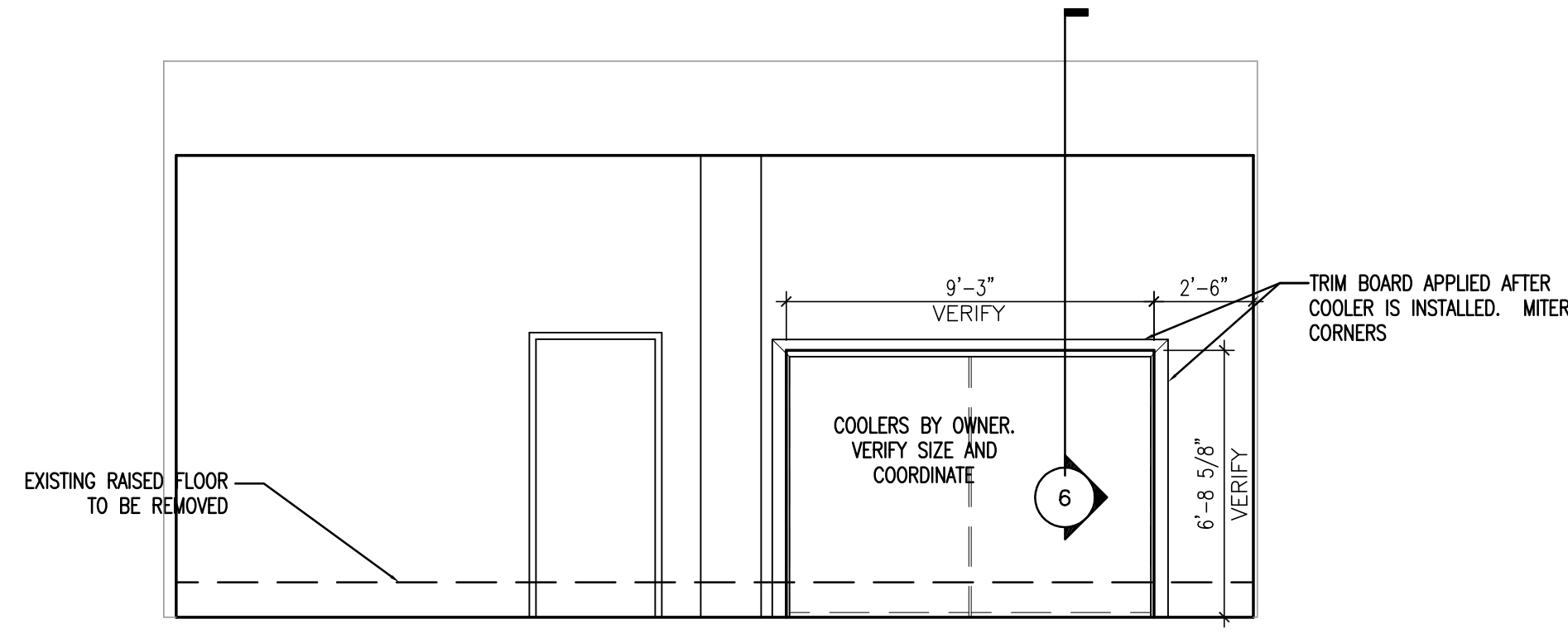
1 ELEVATION AT ENTRY FROM DINING AREA  
1/2" = 1'-0"



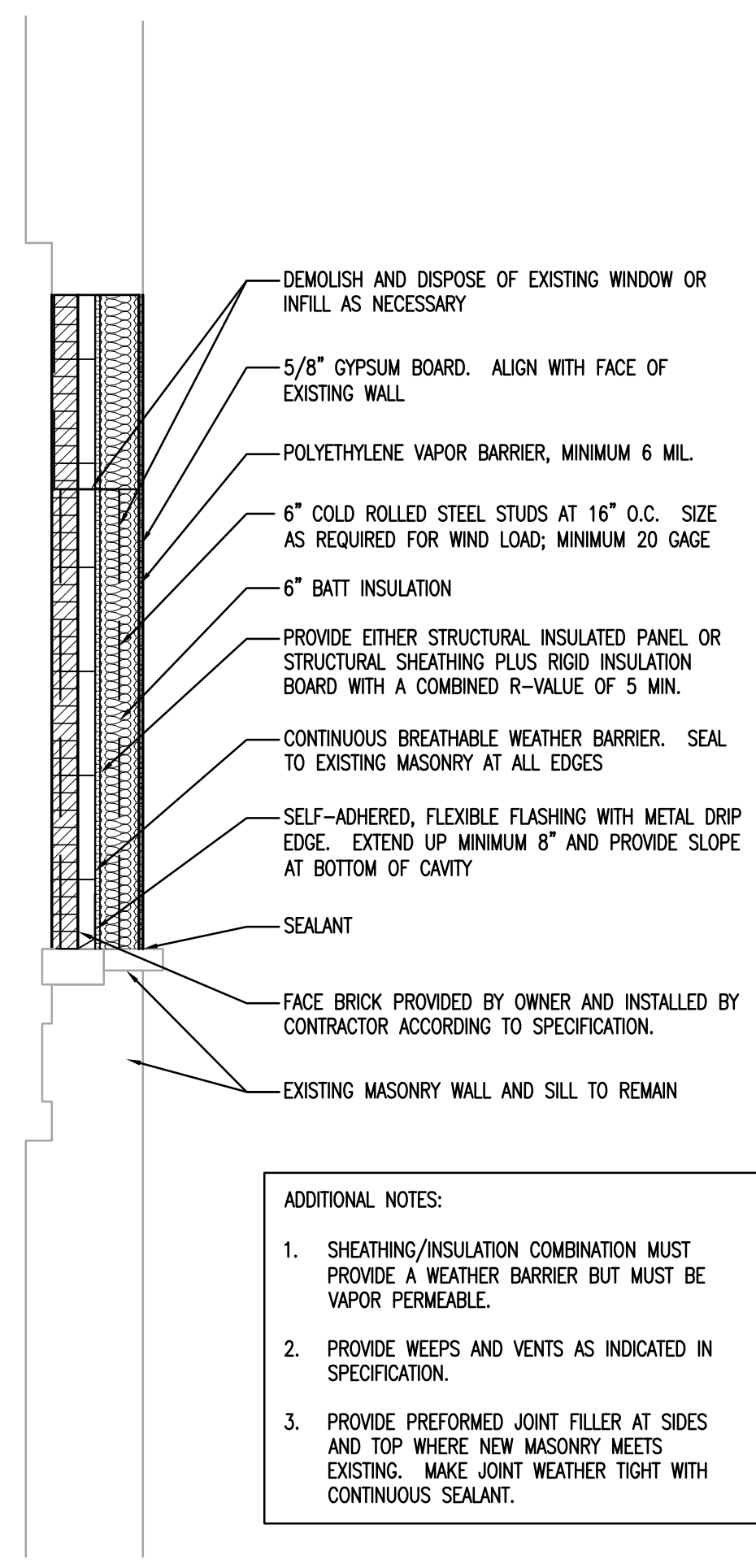
A ENLARGED ENTRY PLAN  
1/2" = 1'-0"



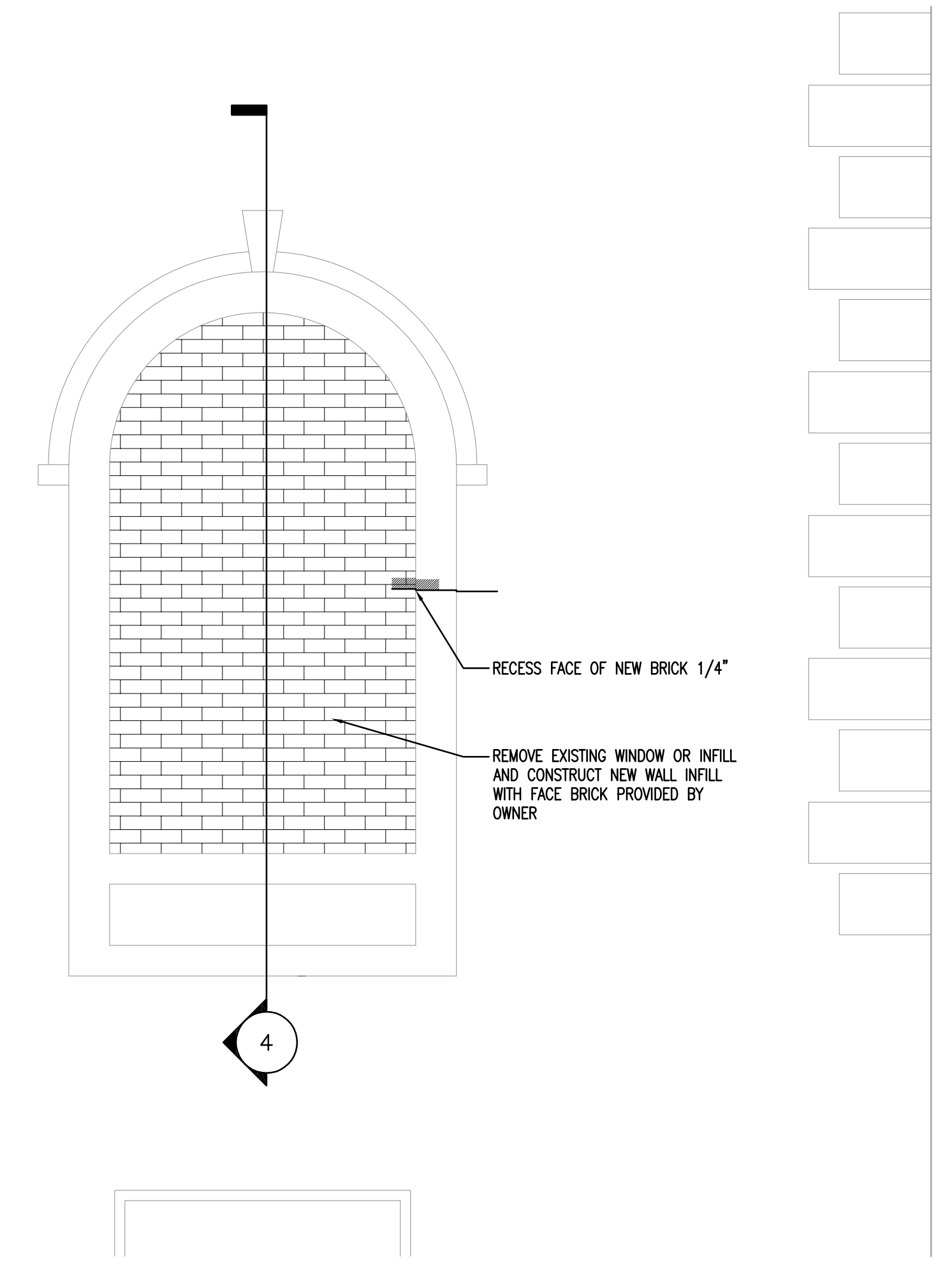
6 SECTION THROUGH STORAGE ROOM WALL AT COOLERS  
1/2" = 1'-0"




5 SOUTH WALL ELEVATION (SHOWING COOLERS)  
1/4" = 1'-0"



4 WALL SECTION THROUGH WINDOW FILL  
1/2" = 1'-0"



3 EXTERIOR ELEVATION AT WINDOW FILL  
1/2" = 1'-0"

		CONSULTANTS:	BUILDING IS FULLY SPRINKLED	<div>ARCHITECT/ENGINEERS:</div> <div><div><div><div></div><div>BROOKS BORG SKILES</div><div>ARCHITECTURE ENGINEERING LLP</div></div></div><div>317 6th Avenue, Suite 400 Des Moines, IA 50309-4136 515 244 7167</div><div>AE PROJECT NO. 10031</div></div>	<div>Drawing Title</div> <div>DETAILS</div> <div>Scale: AS NOTED</div> <div>Approved: Project Director</div>	<div>Project Title</div> <div>CANTEEN RETAIL STORE</div> <div><div><div></div><div></div><div></div></div></div> <div>Location</div> <div>DES MOINES, IOWA</div> <div><div>Date</div><div>11/01/2011</div><div>Checked</div><div>SS</div><div>Drawn</div><div>WES</div></div>	<div>Project Number</div> <div>636A6-10-712</div> <div>Building Number</div> <div>2</div> <div>Drawing Number</div> <div>A102</div> <div>Dwg. 5 of 16</div>	<div>Department of Veterans Affairs</div> <div></div>
Revisions:	Date							