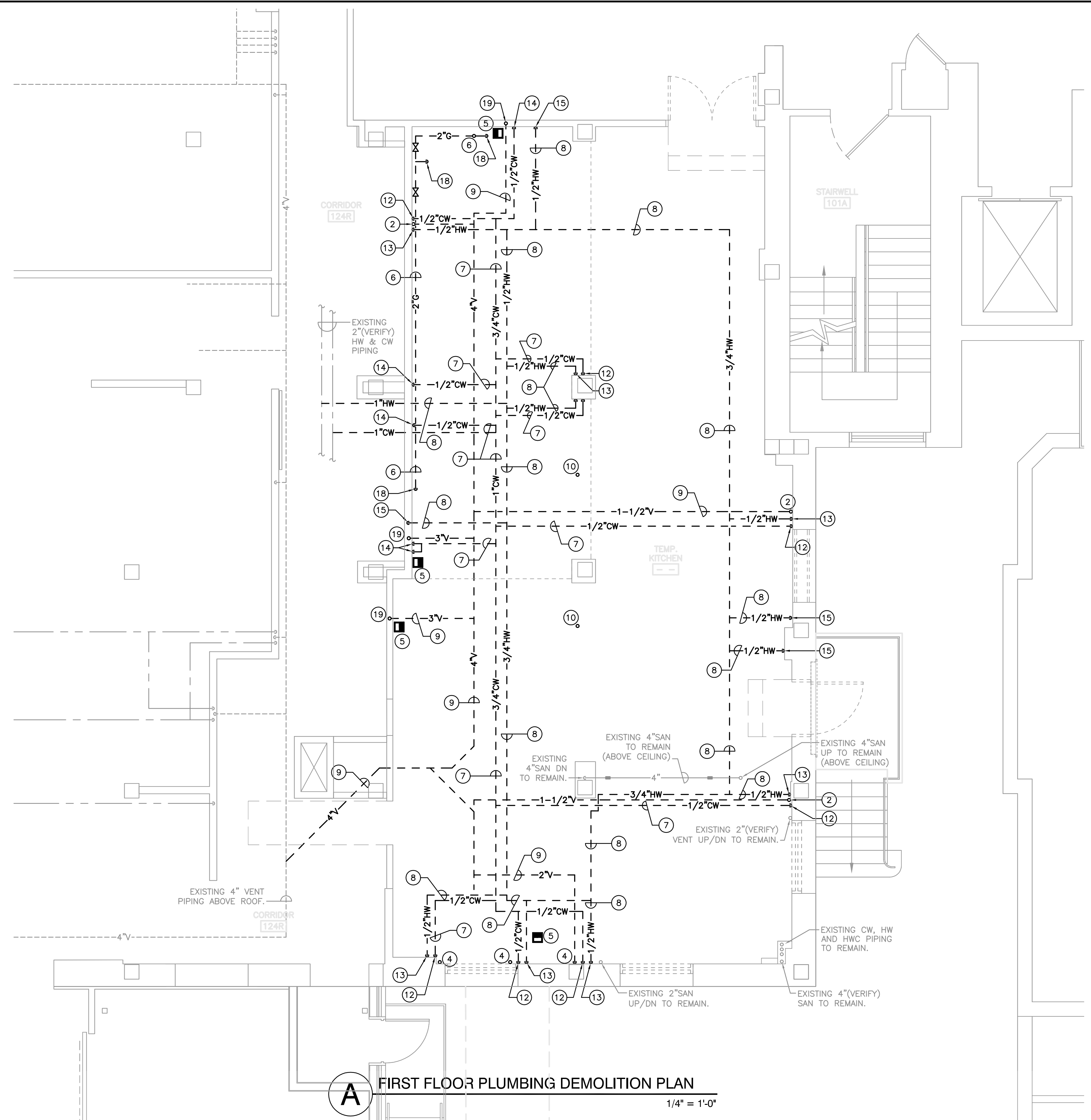
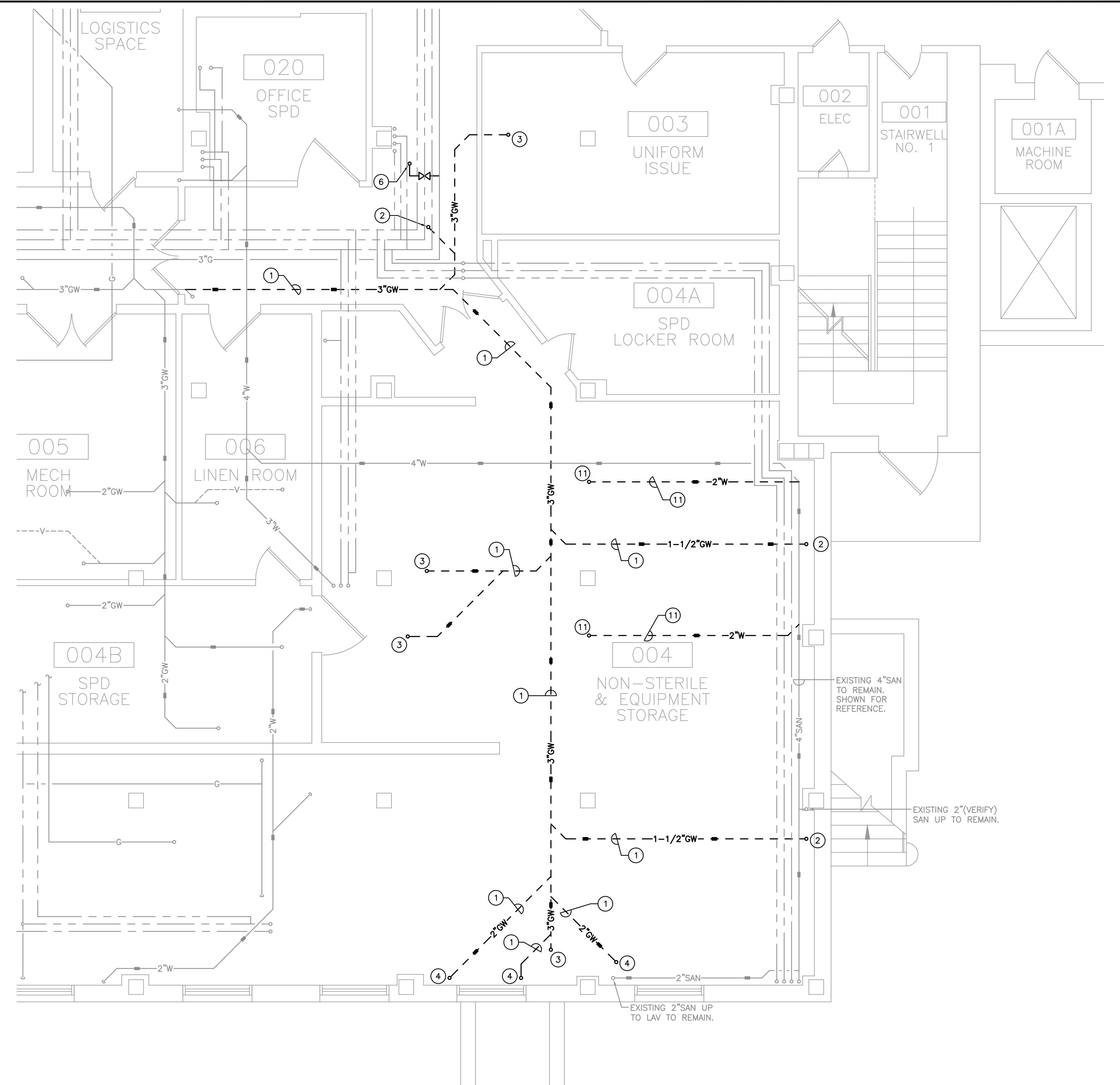


three inches = one foot  
one and one half inches = one foot  
one inch = one foot  
three quarters inch = one foot  
one half inch = one foot  
one quarter inch = one foot  
three eighths inch = one foot  
one eighth inch = one foot  
one eighth inch = one foot



**A** FIRST FLOOR PLUMBING DEMOLITION PLAN  
1/4" = 1'-0"

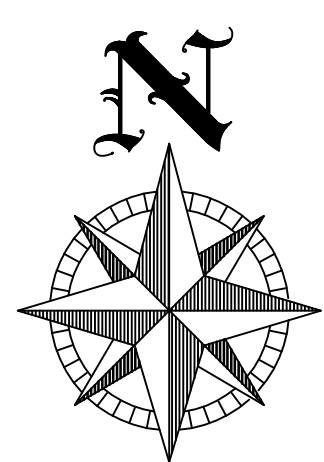
- GENERAL NOTES**
- PLUMBING ENTITIES DRAWN WITH THIS LINETYPE (----) INDICATES ENTITIES TO BE DEMOLISHED, UNLESS OTHERWISE NOTED.
  - REMOVE ALL EXISTING PIPE, HANGERS, AND SUPPORTS. GRIND DOWN PROTRUDING FASTENERS UNTIL FLUSH WITH SURFACE.
  - OWNER TO REMOVE AND RELOCATE EXISTING KITCHEN EQUIPMENT INCLUDING SINKS, DRINK DISPENSERS, KITCHEN HOODS, AND BAKING DEVICES.
  - COORDINATE ALL CONSTRUCTION IN SPD STORAGE WITH COTR. ALL WORK IN SPD STORAGE MUST BE COMPLETED BETWEEN 8PM FRIDAY AND 6AM SUNDAY.
  - SEE ARCHITECTURAL SHEETS REGARDING PATCHING OF EXISTING CONCRETE FLOOR CREATED BY DEMOLITION OF PLUMBING PIPING.
  - DRAWINGS SHOWING LOCATIONS OF EQUIPMENT AND PIPING, ETC. ARE DIAGRAMMATIC AND MAY NOT ALWAYS REFLECT ACTUAL INSTALLATION CONDITIONS. DRAWINGS SHOW THE GENERAL ARRANGEMENT OF ALL PIPING, AND EQUIPMENT AND MAY NOT INCLUDE ALL OFFSETS AND FITTINGS, AS REQUIRED. THE DRAWINGS SHALL BE FOLLOWED AS CLOSELY AS ACTUAL BUILDING CONSTRUCTION AND THE WORK OF OTHERS WILL PERMIT.
  - PLUMBING ENTITIES DRAWN WITH THIS LINETYPE (—) INDICATES ENTITIES TO REMAIN, UNLESS OTHERWISE NOTED.
  - SCHEDULE AND COORDINATE ALL WORK IN THE BASEMENT WITH THE OWNER AT LEAST ONE WEEK IN ADVANCE. REMOVE CEILING TILES AND GRID AS REQUIRED TO PERFORM DEMOLITION AND PATCHING. REPLACE ACOUSTIC TILED CEILING AFTER COMPLETION OF WORK.
  - GENERAL CONTRACTORS SHALL HAVE FINAL RESPONSIBILITY FOR TEMPORARY REMOVAL OF CEILING AND FULL RESTORATION TO EXISTING CONDITION FOR ALL WORK IN THE CEILING AT THE BASEMENT LEVEL.
  - CONTRACTOR SHALL SEAL, PATCH, AND FIRE STOP ALL OPENINGS IN THE CONCRETE SLAB AND WALLS.



**B** BASEMENT PLUMBING DEMOLITION PLAN  
1/4" = 1'-0"

- KEYED NOTES**
- DEMOLISH EXISTING HORIZONTAL GREASE WASTE PIPING ABOVE CEILING AND CAP AT MAIN.
  - DEMOLISH EXISTING 1-1/2" VERTICAL GREASE WASTE PIPING.
  - DEMOLISH EXISTING 3" VERTICAL GREASE WASTE PIPING.
  - DEMOLISH EXISTING 2" VERTICAL GREASE WASTE PIPING.
  - DEMOLISH EXISTING FLOOR SINK, INCLUDING 3" GREASE WASTE CONNECTION.
  - DEMOLISH EXISTING 2" GAS RISER, INCLUDING VALVE AND HORIZONTAL PIPING, BACK TO MAIN AND CAP.
  - DEMOLISH EXISTING DOMESTIC COLD WATER PIPING ABOVE CEILING.
  - DEMOLISH EXISTING DOMESTIC HOT WATER PIPING ABOVE CEILING.
  - DEMOLISH EXISTING VENT PIPING.
  - REMOVE EXISTING 2" SANITARY FROM 6" BELOW OVERHEAD STRUCTURE TO FLOOR.
  - DEMOLISH EXISTING 2" SANITARY PIPING AND CAP AT MAIN.

- KEYED NOTES (continued)**
- DEMOLISH EXISTING 1/2"CW DOWN TO SURFACE-MOUNTED SINK.
  - DEMOLISH EXISTING 1/2"HW DOWN TO SURFACE-MOUNTED SINK.
  - DEMOLISH EXISTING 1/2"CW DOWN TO KITCHEN EQUIPMENT.
  - DEMOLISH EXISTING 1/2"HW DOWN TO KITCHEN EQUIPMENT.
  - DEMOLISH EXISTING 1/2"CW PIPING NEAR FLOOR LEVEL.
  - DEMOLISH EXISTING 1/2"HW PIPING NEAR FLOOR LEVEL.
  - DEMOLISH 2"(VERIFY) GAS PIPING DOWN TO OVEN.
  - DEMOLISH EXISTING 3" WASTE VENT PIPING RECESSED IN WALL. CUT AND PATCH EXISTING WALL AS REQUIRED FOR DEMOLITION.



Revisions:	CONSULTANTS:	BUILDING IS FULLY SPRINKLED	ARCHITECT/ENGINEERS: <b>BROOKS BORG SKILES</b> ARCHITECTURE ENGINEERING LLP 317 6th Avenue, Suite 400 Des Moines, IA 50309-4136 515 244 7167 AE PROJECT NO. 10031	Drawing Title <b>PLUMBING DEMOLITION PLANS</b> Scale: AS NOTED Approved: Project Director	Project Title <b>CANTEEN RETAIL STORE</b>		Project Number <b>636A6-10-712</b>	
	Building Number <b>2</b>				Location <b>DES MOINES, IOWA</b>			
	Date 11/01/2011				Checked CR	Drawn RR		
	Dwg. 8 of 16				Department of Veterans Affairs			
	Date							