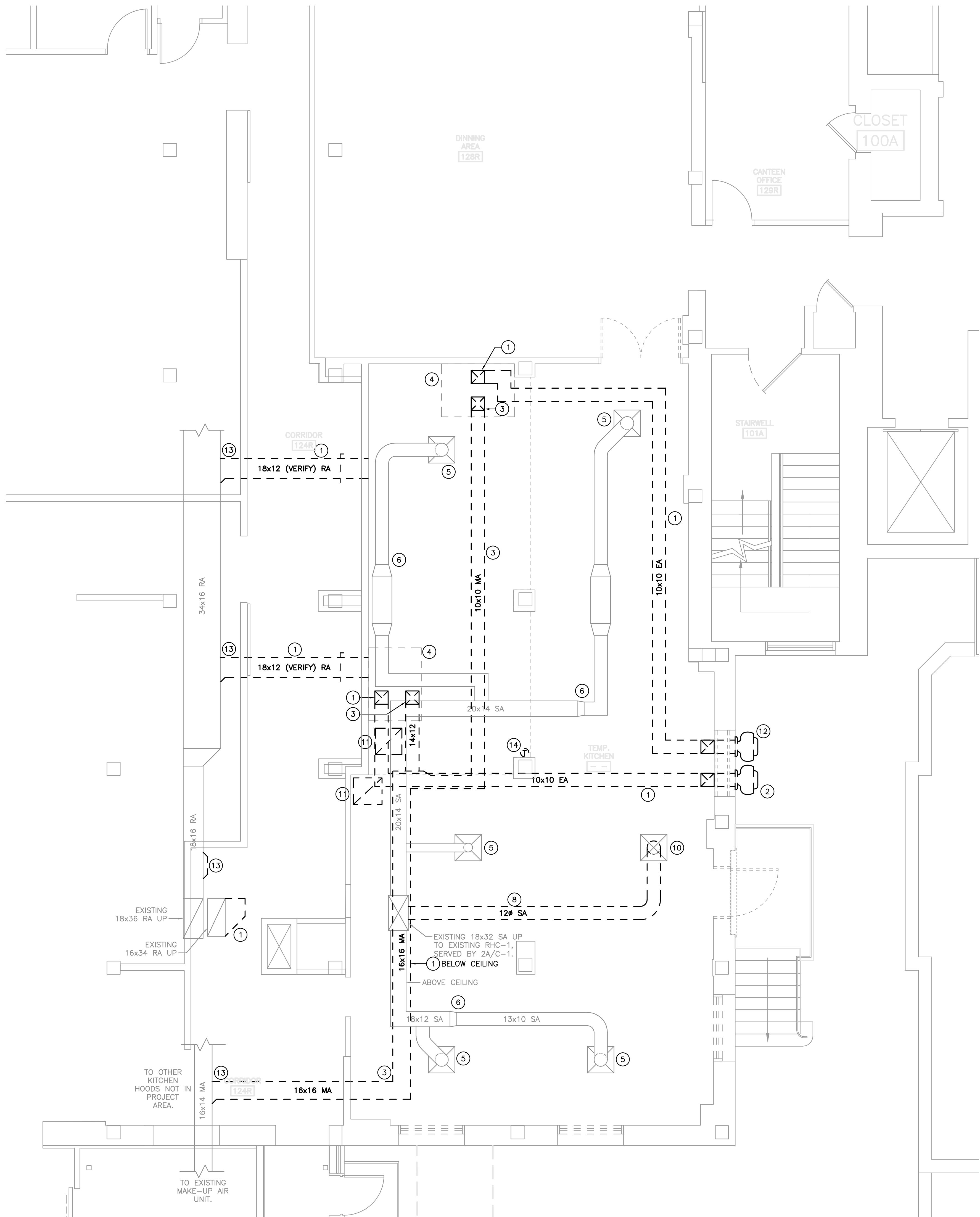
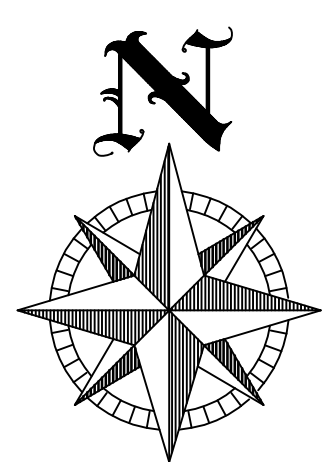


three inches = one foot
one and one half inches = one foot
one inch = one foot
three quarters inch = one foot
one half inch = one foot
three eighths inch = one foot
one quarter inch = one foot
one eighth inch = one foot



- GENERAL HVAC DEMOLITION NOTES**
- MECHANICAL ENTITIES DRAWN WITH THIS LINETYPE (---) INDICATES ENTITIES TO BE REMOVED, UNLESS OTHERWISE NOTED.
 - MECHANICAL ENTITIES DRAWN WITH THIS LINETYPE (---) INDICATES ENTITIES TO REMAIN, UNLESS OTHERWISE NOTED.
 - IN ADDITION TO EXISTING DUCTWORK AND PIPING TO BE DEMOLISHED, REMOVE EXISTING ASSOCIATED HANGERS, SUPPORTS AND FASTENERS.
 - OWNER TO REMOVE AND RELOCATE EXISTING KITCHEN EQUIPMENT INCLUDING SINKS, DRINK DISPENSERS, KITCHEN HOODS, AND BAKING DEVICES.
 - DRAWINGS SHOWING LOCATIONS OF EQUIPMENT, DUCTWORK, PIPING, ETC. ARE DIAGRAMMATIC AND MAY NOT ALWAYS REFLECT ACTUAL INSTALLATION CONDITIONS. DRAWINGS SHOW THE GENERAL ARRANGEMENT OF ALL PIPING, DUCTWORK, EQUIPMENT, ETC., AND MAY NOT INCLUDE ALL OFFSETS AND FITTINGS, AS REQUIRED. THE DRAWINGS SHALL BE FOLLOWED AS CLOSELY AS ACTUAL BUILDING CONSTRUCTION AND THE WORK OF OTHERS WILL PERMIT.
 - GENERAL CONTRACTOR SHALL HAVE FINAL RESPONSIBILITY TO SEAL, PATCH, AND FIRE STOP ALL OPENINGS IN THE CONCRETE SLAB AND WALLS.
- KEYED DEMOLITION NOTES**
- DEMOLISH EXISTING DUCTWORK.
 - DEMOLISH EXISTING EXHAUST FAN.
 - DEMOLISH EXISTING MAKE-UP AIR DUCTWORK.
 - KITCHEN HOOD REMOVED BY OWNER.
 - EXISTING SUPPLY DIFFUSER TO REMAIN. RELOCATE AS NEEDED TO FIT IN NEW CEILING.
 - EXISTING SUPPLY DUCT TO REMAIN, SHOWN FOR REFERENCE.
 - EXISTING RETURN GRILLE TO REMAIN.
 - DEMOLISH EXISTING SUPPLY DUCT.
 - REMOVE AND REUSE EXISTING SUPPLY DIFFUSER.
 - EXISTING SUPPLY DIFFUSER TO REMAIN. RELOCATE IN NEW CEILING AND RECONNECT TO NEW SUPPLY DUCTWORK.
 - DEMOLISH EXISTING LAY-IN RETURN DIFFUSER.
 - DEMOLISH UPPER-MOST EXISTING EXHAUST FAN. PHASE DEMOLITION SO THAT FAN CAN BE USED FOR TEMPORARY NEGATIVE PRESSURE FAN DURING CONSTRUCTION.
 - DEMOLISH EXISTING BRANCH DUCT CONNECTION AND CAP AT MAIN TRUNK.
 - DEMOLISH EXISTING THERMOSTAT.



		CONSULTANTS:	BUILDING IS FULLY SPRINKLED	<div>ARCHITECT/ENGINEERS:</div> <div><div><div></div><div>BROOKS BORG SKILES</div><div>ARCHITECTURE ENGINEERING LLP</div></div><div>317 6th Avenue, Suite 400 Des Moines, IA 50309-4136 515 244 7167</div><div>AE PROJECT NO. 10031</div></div>	<div>Drawing Title</div> <div>FIRST FLOOR MECHANICAL DEMOLITION PLAN</div> <div>Scale: AS NOTED</div> <div>Approved: Project Director</div>	<div>Project Title</div> <div>CANTEEN RETAIL STORE</div> <div>Building Number 2</div> <div>Location DES MOINES, IOWA</div> <div><div>Date 11/01/2011</div><div>Checked CR</div><div>Drawn RR</div></div> <div>Drawing Number MD101</div> <div>Dwg. 1.0 of 16</div>	<div>Project Number</div> <div>636A6-10-712</div>	<div>Department of Veterans Affairs</div> <div></div>
Revisions:	Date							