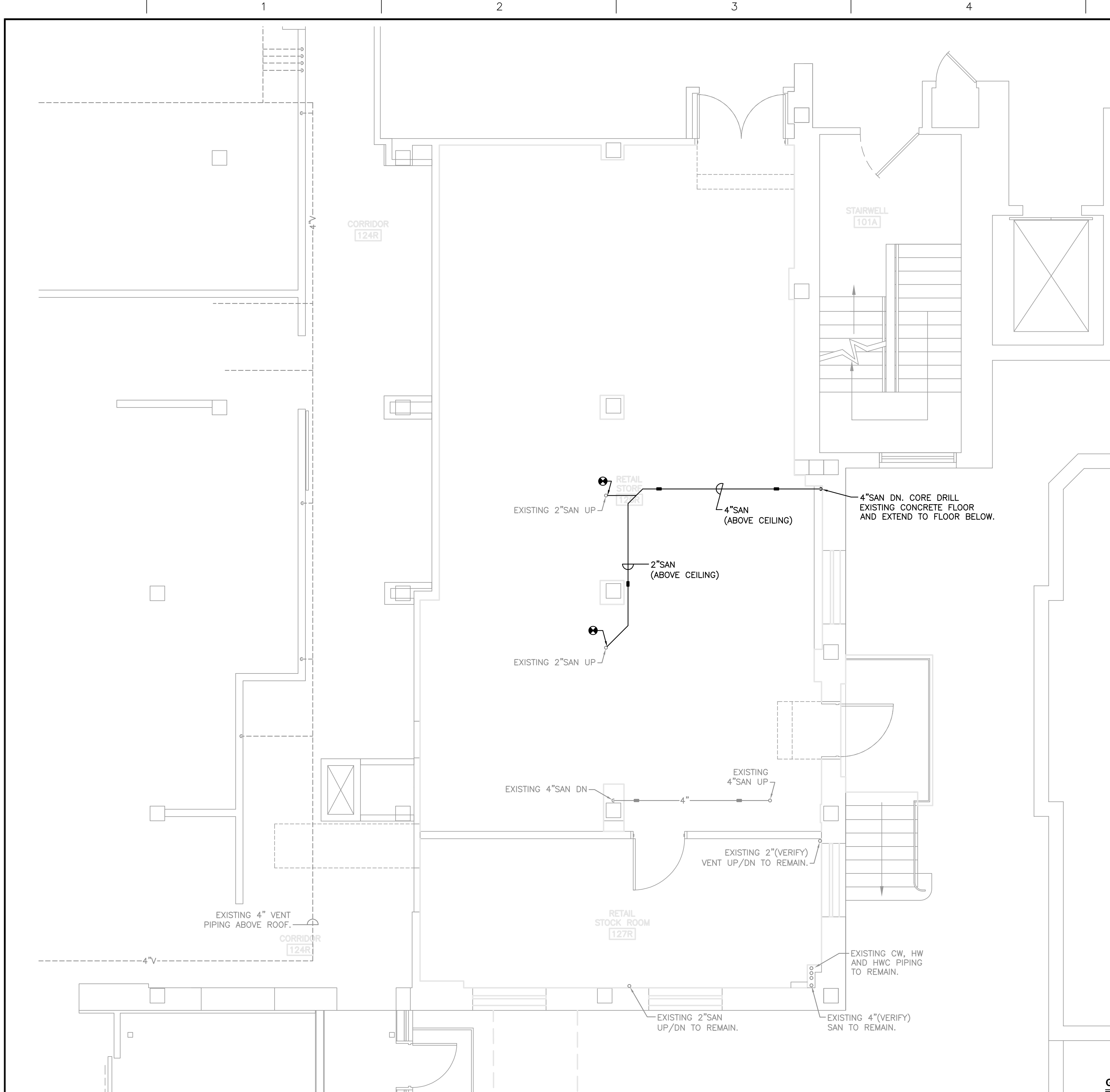
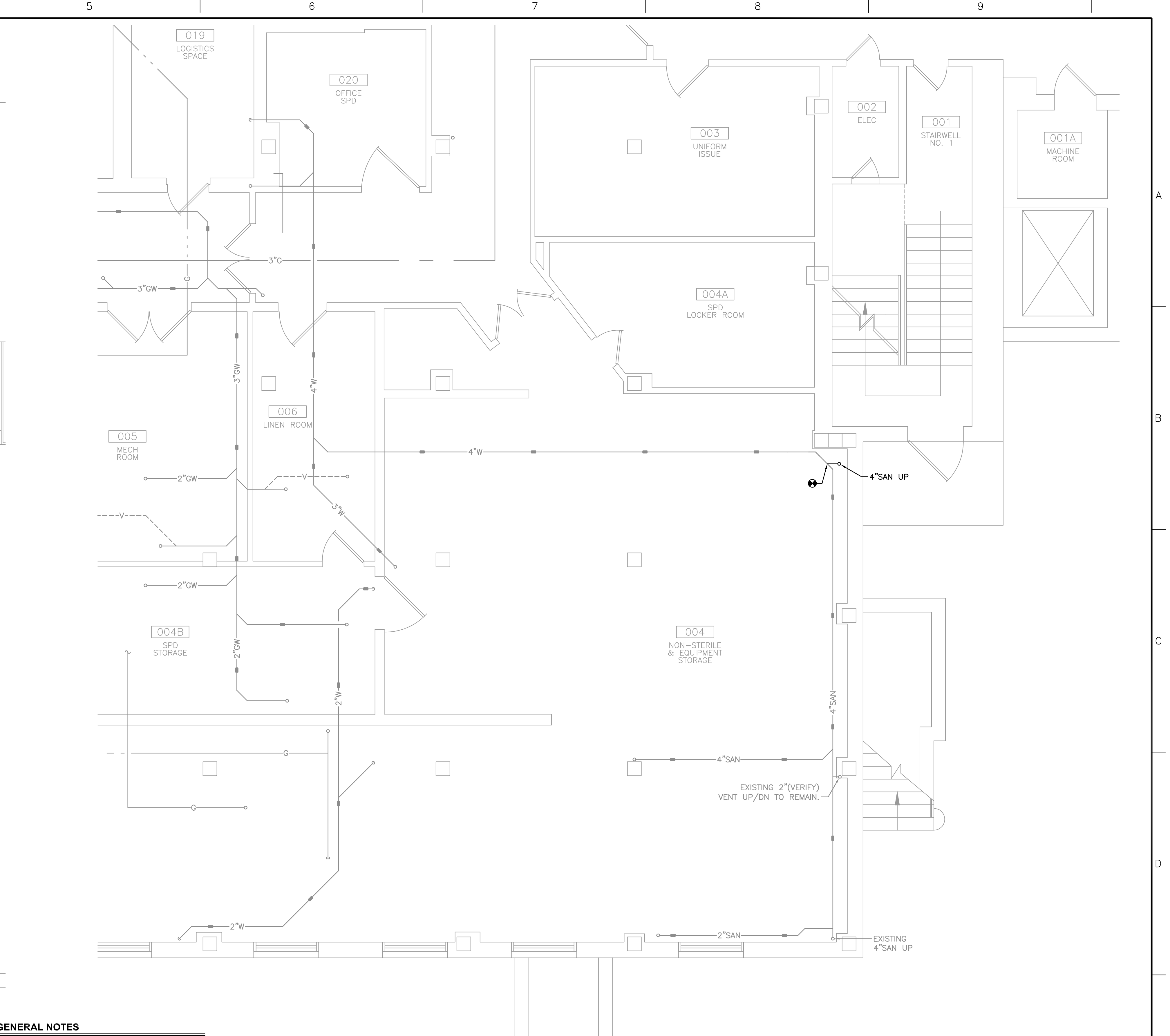


three inches = one foot
one and one half inches = one foot
one inch = one foot
three quarters inch = one foot
one half inch = one foot
three eighths inch = one foot
one quarter inch = one foot
one eighth inch = one foot

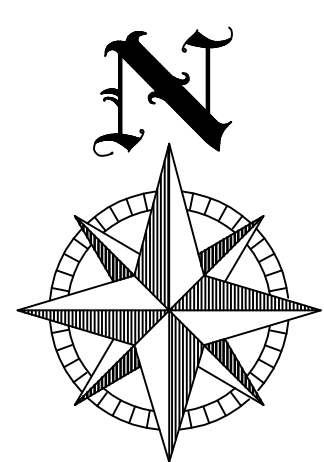


A FIRST FLOOR PLUMBING PLAN
1/4" = 1'-0"



B BASEMENT PLUMBING PLAN
1/4" = 1'-0"

- GENERAL NOTES**
- DRAWINGS SHOWING LOCATIONS OF EQUIPMENT AND PIPING ARE DIAGRAMMATIC AND MAY NOT ALWAYS REFLECT ACTUAL INSTALLATION CONDITIONS. DRAWINGS SHOW THE GENERAL ARRANGEMENT OF PIPING AND EQUIPMENT AND MAY NOT INCLUDE ALL OFFSETS AND FITTINGS, AS REQUIRED. THE DRAWINGS SHALL BE FOLLOWED AS CLOSELY AS ACTUAL BUILDING CONSTRUCTION AND THE WORK OF OTHERS WILL PERMIT.
 - CONTRACTOR SHALL SEAL, PATCH, AND FIRE STOP ALL OPENINGS IN THE CONCRETE SLAB AND WALLS. THIS IS ESSENTIAL TO PREVENT NOISE FROM GOING FROM ONE ROOM TO ANOTHER AND TO PROVIDE THE DESIRED NC LEVELS WITHIN THE ROOMS.
 - COORDINATE ALL CONSTRUCTION IN SPD STORAGE WITH COTR. ALL WORK IN SPD STORAGE MUST BE COMPLETED BETWEEN 8PM FRIDAY AND 6AM SUNDAY.
 - PLUMBING ENTITIES DRAWN WITH THIS LINETYPE (---) INDICATES ENTITIES ARE NEW, UNLESS OTHERWISE NOTED.
 - PLUMBING ENTITIES DRAWN WITH THIS LINETYPE (---) INDICATES ENTITIES ARE EXISTING, UNLESS OTHERWISE NOTED.



Revisions:		Date		CONSULTANTS:		BUILDING IS FULLY SPRINKLED		ARCHITECT/ENGINEERS:		Drawing Title		Project Title		Project Number	
								317 6th Avenue, Suite 400 Des Moines, IA 50309-4136 515 244 7167		PLUMBING PLANS		CANTEEN RETAIL STORE		636A6-10-712	
								AE PROJECT NO. 10031		Scale: AS NOTED		Location: DES MOINES, IOWA		Building Number 2	
										Approved: Project Director		Date: 11/01/2011		Checked: CR	
												Drawn: RR		Drawing Number P101	
														Dwg. 9 of 16	