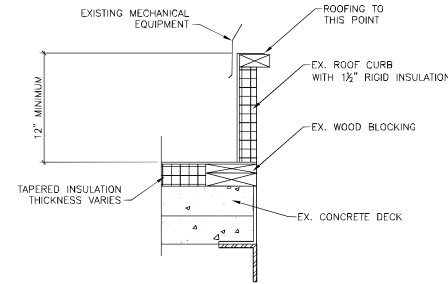
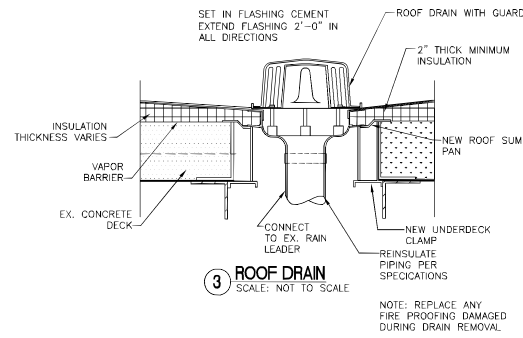


1 ROOF ASSEMBLY SECTION VIEW
SCALE: 1/8"=1'-0"

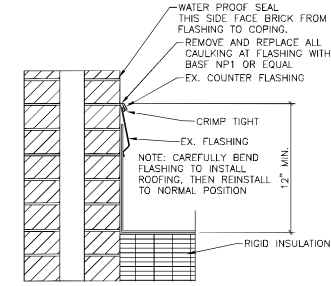


2 ROOF CURB
SCALE: NOT TO SCALE

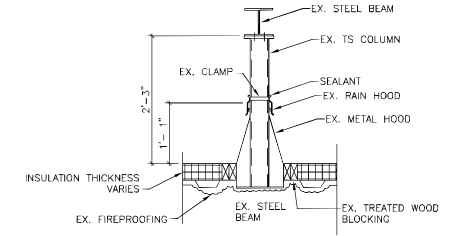


3 ROOF DRAIN
SCALE: NOT TO SCALE

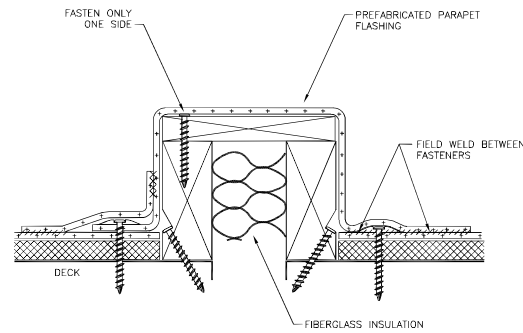
NOTE: REPLACE ANY FIRE PROOFING DAMAGED DURING DRAIN REMOVAL.



4 FLASHING DETAIL
SCALE: NOT TO SCALE



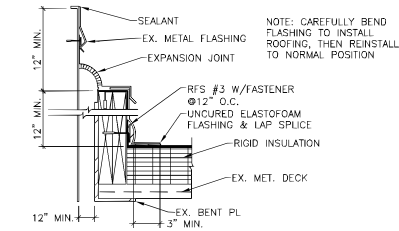
5 PLATFORM LEG FLASHING
SCALE: NOT TO SCALE



GENERAL NOTES:

- TABS THAT ARE PARALLEL TO THE EXPANSION JOINT MUST BE MECHANICALLY FASTENED WITH THE SAME FASTENING PATTERN USED ON THE MEMBRANE IN THE FIELD AREA.
- LEAVE THE MEMBRANE COVERING THE EXPANSION JOINT LOOSE ENOUGH TO ALLOW FOR MOVEMENT OF THE BUILDING ON EITHER SIDE OF THE JOINT.

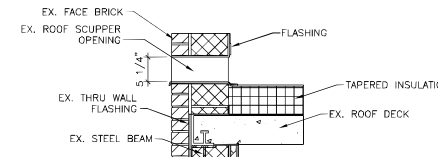
6 DECK TO DECK EXP. JOINT
SCALE: NOT TO SCALE



7 DECK TO WALL EXP. JOINT
SCALE: NOT TO SCALE

NOTE: CAREFULLY BEND FLASHING TO INSTALL ROOFING, THEN REINSTALL TO NORMAL POSITION.

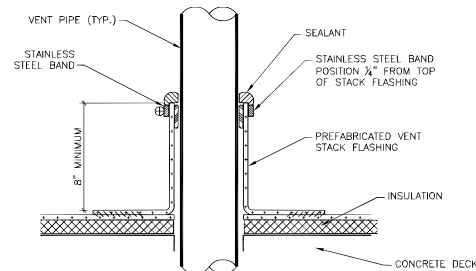
SEE SPECIFICATIONS OF COATED FOAMED ROOFING AND SPRAY FOAM ROOFING SYSTEM CONSTRUCTION DETAILS.



9 SCUPPER DETAIL
SCALE: NOT TO SCALE

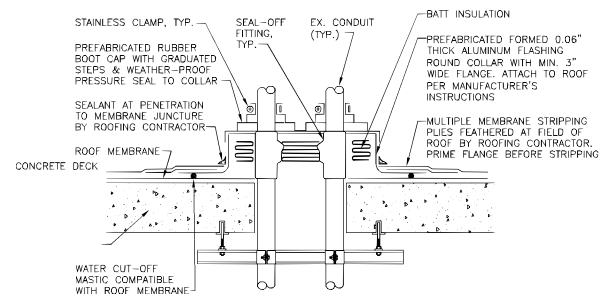
SCHEDULE:

- RD-1 JOSAM 22010 ROOF DRAIN, CAST IRON, 12" DIAMETER ROOF DRAIN, 4" CONNECTION, NO HUB CONNECTION, UNDERDECK CLAMP, CAST IRON DOME STRAINER, ADJ. DRAINAGE COLLAR, VERIFY SIZE OF DRAIN LINE.
- RD-2 JOSAM 22010 ROOF DRAIN, CAST IRON, 12" DIAMETER ROOF DRAIN, 3" CONNECTION, NO HUB CONNECTION, UNDERDECK CLAMP, CAST IRON DOME STRAINER, ADJ. DRAINAGE COLLAR, VERIFY SIZE OF DRAIN LINE.
- LAD-1 LADDER: SIDE MEMBERS ARE 1/4"x2"x2" STEEL ANGLE, 3/4" CORRUGATED STEEL ROUND CLIMBING RUNGS ON 12" CENTERS. STAND-OFF BRACKETS ARE 7". WALK-THRU HANDRAILS EXTEND 42" ABOVE LANDING SURFACE. SAFETY CAGES ARE DESIGNED TO OSHA SPECIFICATIONS WITH FLARED BOTTOM OPENING FOR EASY ENTRY. CAGE BEGINS 6' 9" FROM BOTTOM RUNG. WELDED ONE-PIECE TO MEET OR EXCEED ANSI A14.3, OSHA 1910.27 AND 1926.1053 STANDARDS.
- SL-1 THRU SL-7 SHIPS LADDER: HEAVY DUTY BAR GRATING STAIR TREADS FACTORY WELDED HANDRAILS OF 1 1/2" X 14 GA. SQUARE TUBING, 10" STRUCTURAL CHANNEL STRINGERS, STANDARD 24" WIDE TREADS, 27" OVERALL STAIR WIDTH, TREAD DEPTH IS 6". WELDED ONE-PIECE TO MEET OR EXCEED ANSI A14.3, OSHA 1910.27 AND 1926.1053 STANDARDS. CONTRACTOR TO VERIFY NUMBER OF TREADS NEEDED FOR EACH LOCATION.



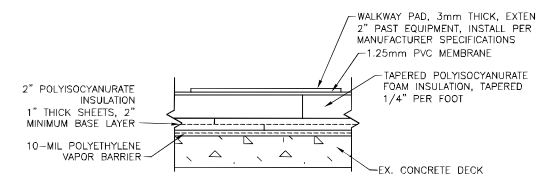
10 VENT THRU ROOF DETAIL
SCALE: NOT TO SCALE

NOTE: MEMBRANE ATTACHMENT AROUND THE PENETRATION WILL BE THE SAME AS THE DECK MEMBRANE, 18" ON CENTER, AND MINIMUM ONE PLATE / FASTENER PER FLASHING.



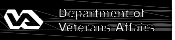
11 PIPE PENETRATION DETAIL
SCALE: NOT TO SCALE

- GENERAL NOTES:**
- FLANGES OF ADJACENT FLASHINGS SHALL NOT BE CUT OR OVERLAPPED.
 - COORDINATE FLASHING INSTALLATION TO ENSURE PROPER METHODS & MATERIALS ARE USED TO MAINTAIN ROOF WARRANTY.



12 EQUIPMENT ROOF PLACEMENT (WALKWAY PADS)
SCALE: 1/8"=1'-0"

NOT ALL DETAILS MAY BE USED FOR THIS PROJECT. COORDINATE WITH PROJECT ENGINEERING PRIOR TO INSTALLATION OF ANY EQUIPMENT ON ROOF.

| | | | | | | | |
|-------------------------|--|---|--|--|---|---|--|
| CONSULTANTS: | | ARCHITECT/ENGINEERS:  Department of Veterans Affairs Richard L. Roudebush Medical Center 1481 West 10th Street Indianapolis, IN 46202 | | Drawing Title ROOF DETAILS AND SCHEDULES | Project Title Roof Replacement for Building 1&22 CSR 7 & 9 | Project Number 583-12-112 Building Number 1&22CSR7&9 | Office of Construction and Facilities Management  |
| Revisions | | | | Approved Project Director | Location Richard L. Roudebush VAMC | Drawing Number A-106 SHT 6 OF 6 | |