

# SPRAY FOAM ROOFING SYSTEM CONSTRUCTION DETAILS\*

[NEW & REMEDIAL ROOF EDGE](#)

[REMEDIAL TIE-IN TO EXISTING METAL EDGE](#)

[TYPICAL ROOF EDGE WITH GUTTER](#)

[NEW METAL PARAPET CAP](#)

[EXISTING PARAPET WITH COPING](#)

[NEW FLASHING FOR WALL SUPPORTED DECK](#)

[FLASHING FOR NEW, NON-WALL SUPPORTED DECK](#)

[HIGH WALL REMEDIAL THROUGH WALL FLASHING](#)

[NEW OR REMEDIAL SIDING OR HIGH WALL](#)

[TYPICAL EXISTING AREA DIVIDER](#)

[REMEDIAL AREA DIVIDER](#)

[TYPICAL ROOF DRAIN](#)

[NEW OR REMEDIAL ROOF DRAIN](#)

[REMEDIAL DRAIN INSERT](#)

[MECHANICAL EQUIPMENT SUPPORT NEW & REMEDIAL](#)

[NEW EXPANSION JOINT](#)

[REMEDIAL EXPANSION JOINT](#)

[SKYLIGHT, HATCH OR SMOKE VENT CURB](#)

[NEW OR REMEDIAL HOT STACK FLASHING](#)

[CORRUGATED METAL ROOF EDGE NEW AND REMEDIAL](#)

[FLAT ROOF TO SHINGLE TIE IN](#)

[NEW AND REMEDIAL FLUTED METAL DECK](#)

[WATER STOP](#)

[REMEDIAL PROTRUSION FLASHING](#)

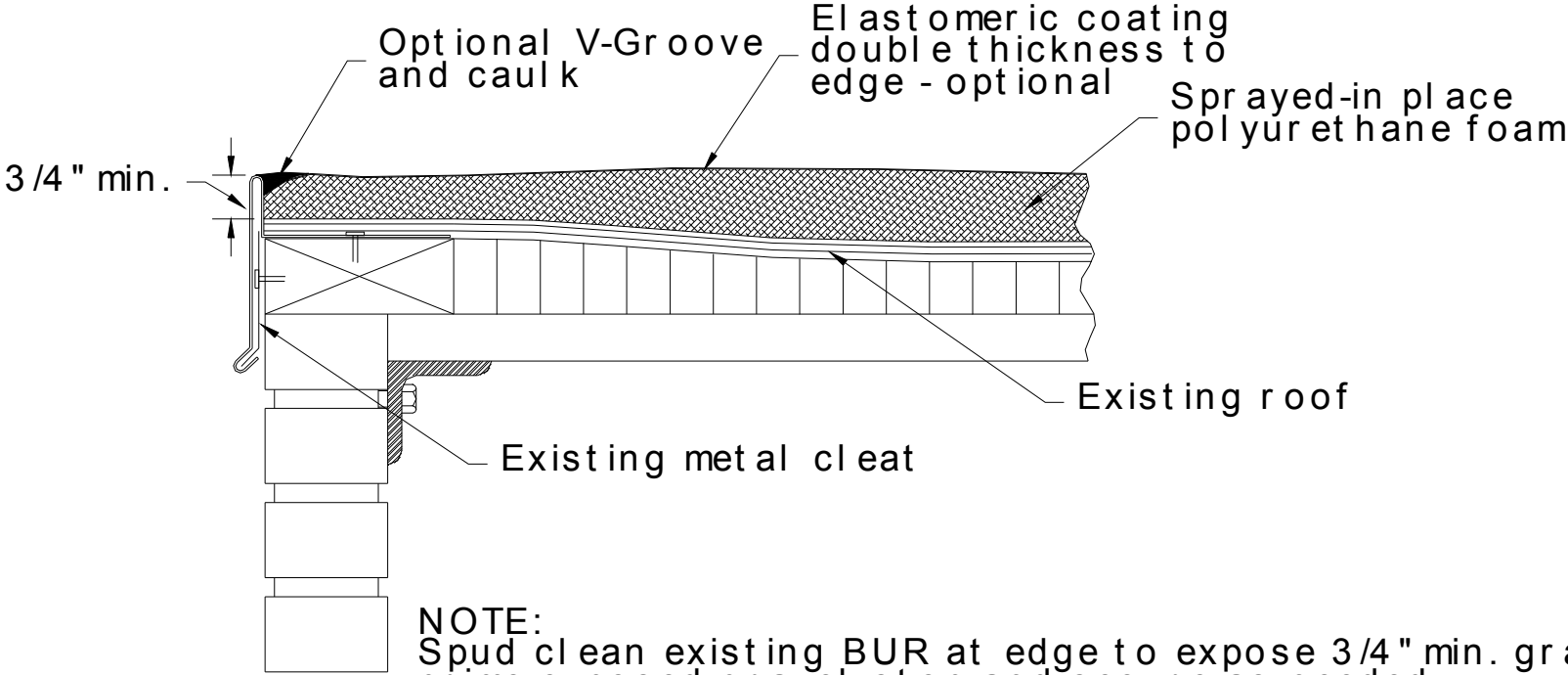
[RAISED CURB DETAIL FOR ROOFTOP AIR HANDLING UNITS & DUCTS \(PREFABRICATED METAL CURB\)](#)

[RAISED CURB DETAIL FOR ROOFTOP AIR HANDLING UNITS & DUCTS \(JOB SITE CONSTRUCTION WOOD CURB\)](#)

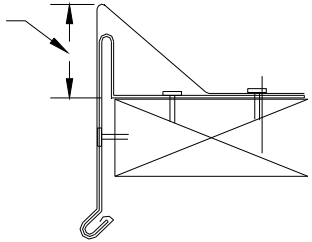
[REMEDIAL AIR CONDITIONER TREATMENT](#)

\*Excerpt from Spray Polyurethane Foam Alliance's AY-104 Roofing Guide Spec

# NEW & REMEDIAL ROOF EDGE

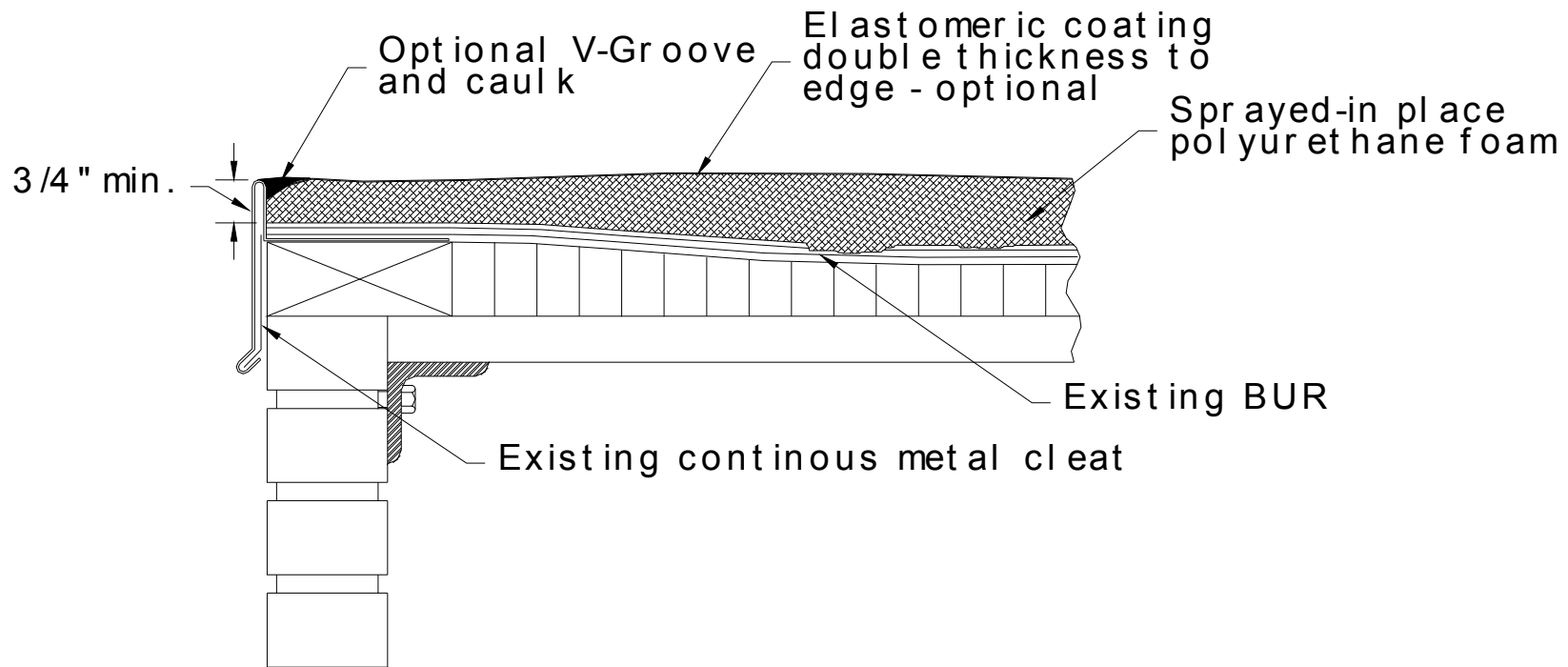


Height varies



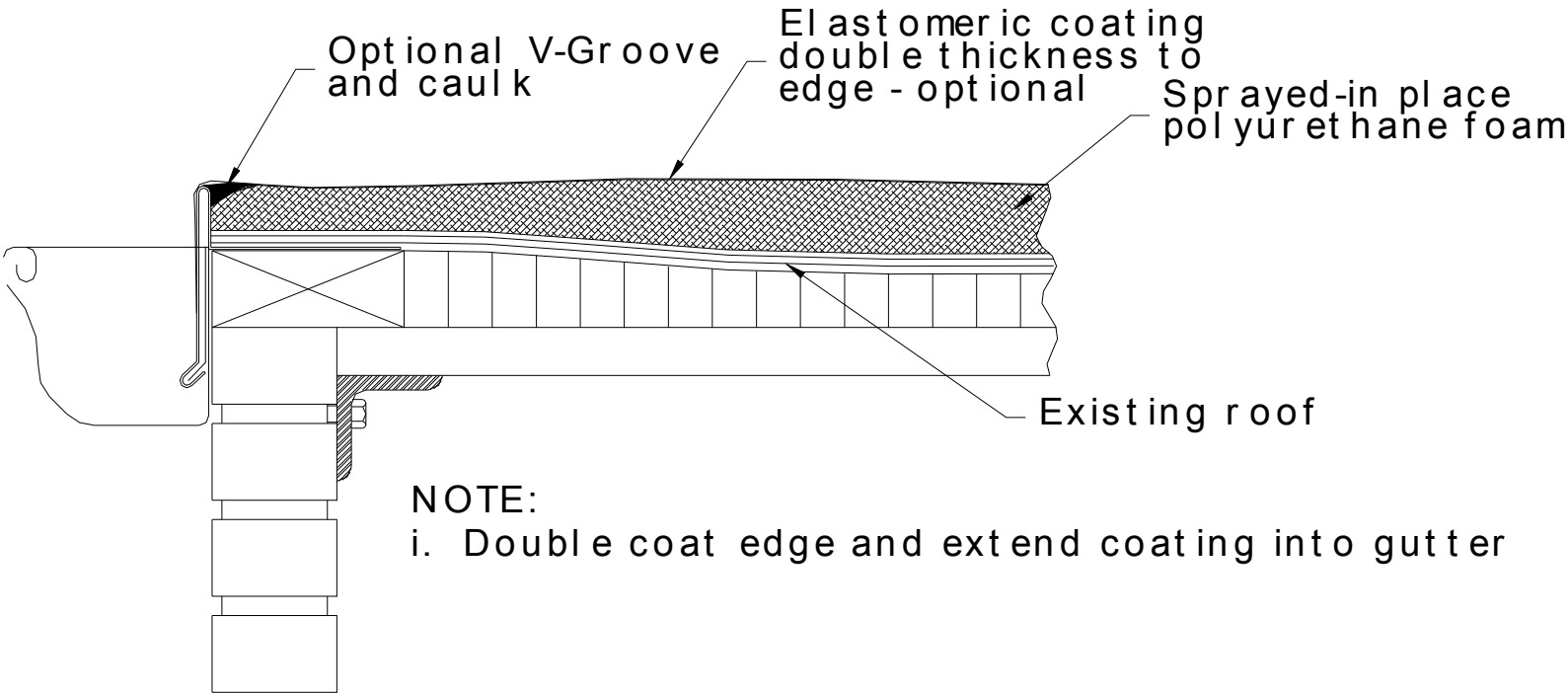
New foam stop, bend per SMACNA specs., may be installed over sound existing metal edge for required height.

# REMEDIAL TIE-IN TO EXISTING METAL EDGE

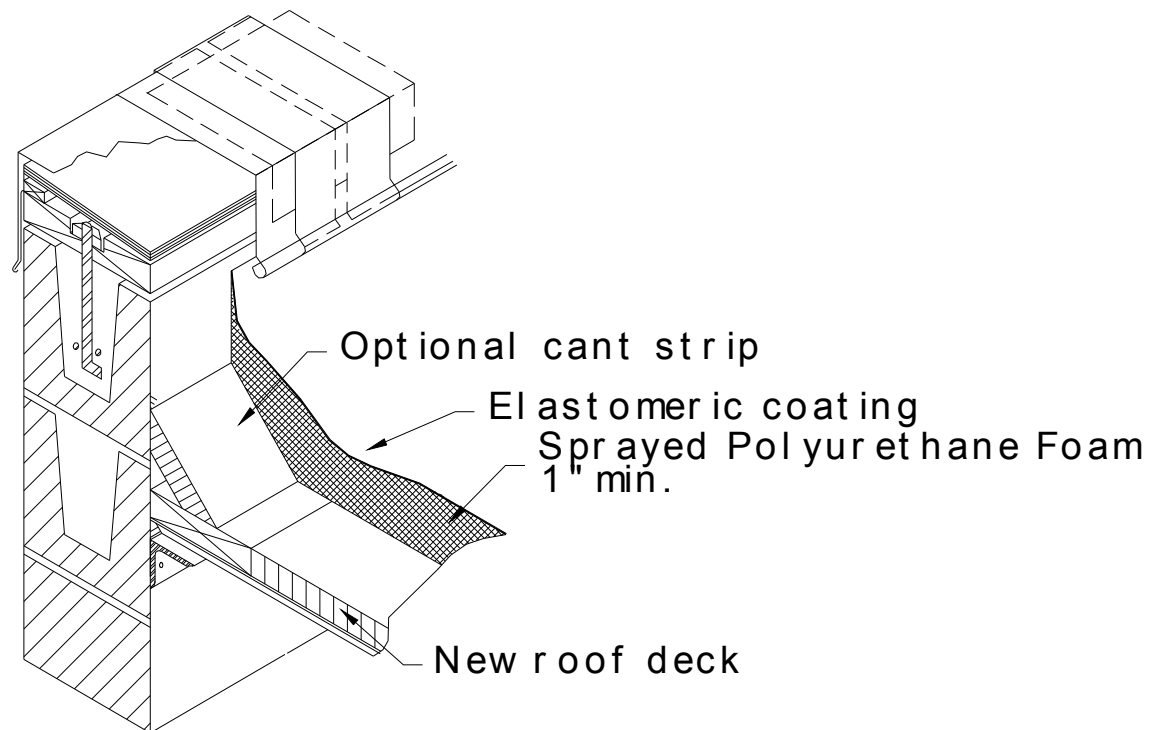


**NOTE:**  
Spud clean existing BUR at edge to expose 3/4" min. gravel stop  
prime exposed gravel stop and secure as needed

# TYPICAL ROOF EDGE WITH GUTTER



# NEW METAL PARAPET CAP

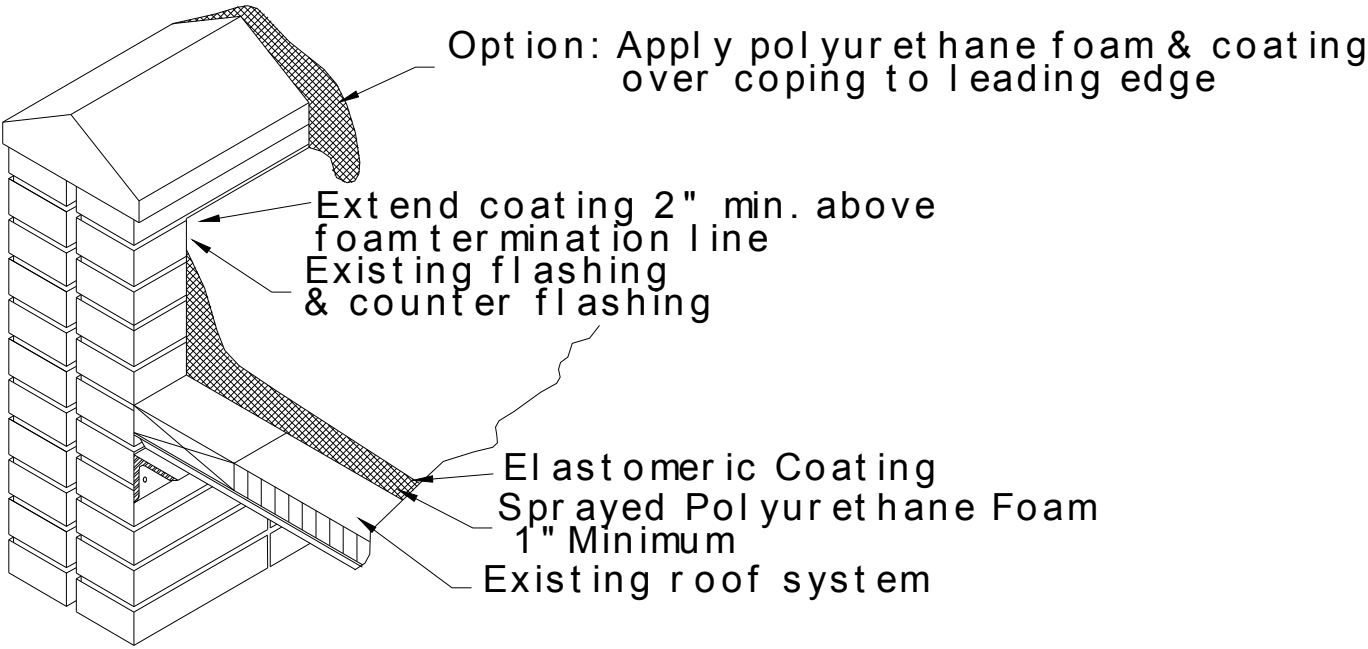


**NOTE:**

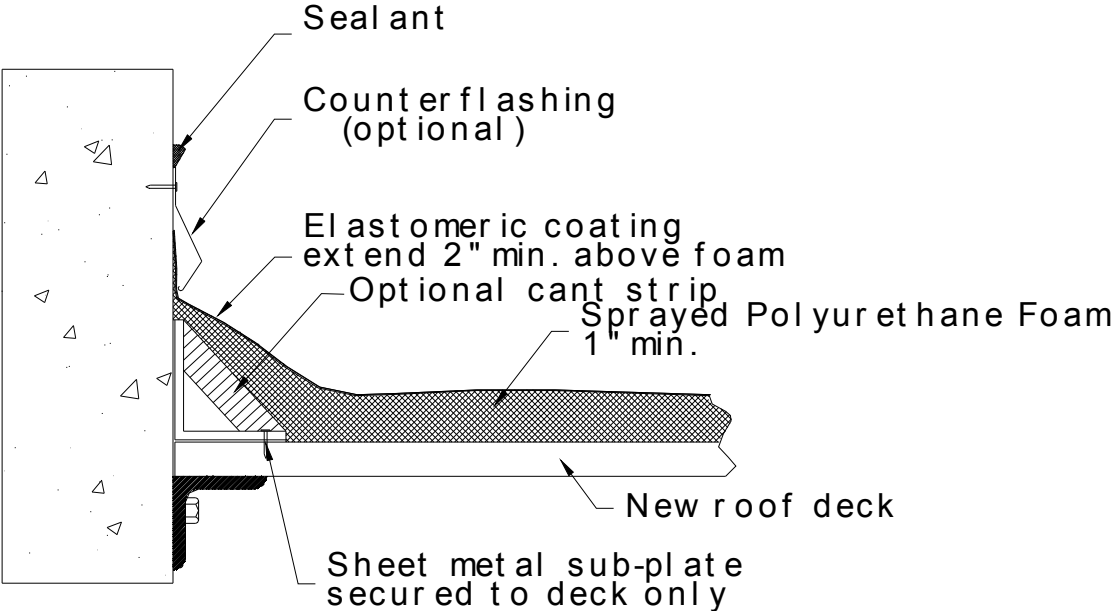
i; Free height shall be 8" above roof surface

ii; This detail should be used only when the deck is supported by the wall

# EXISTING PARAPET WITH COPING

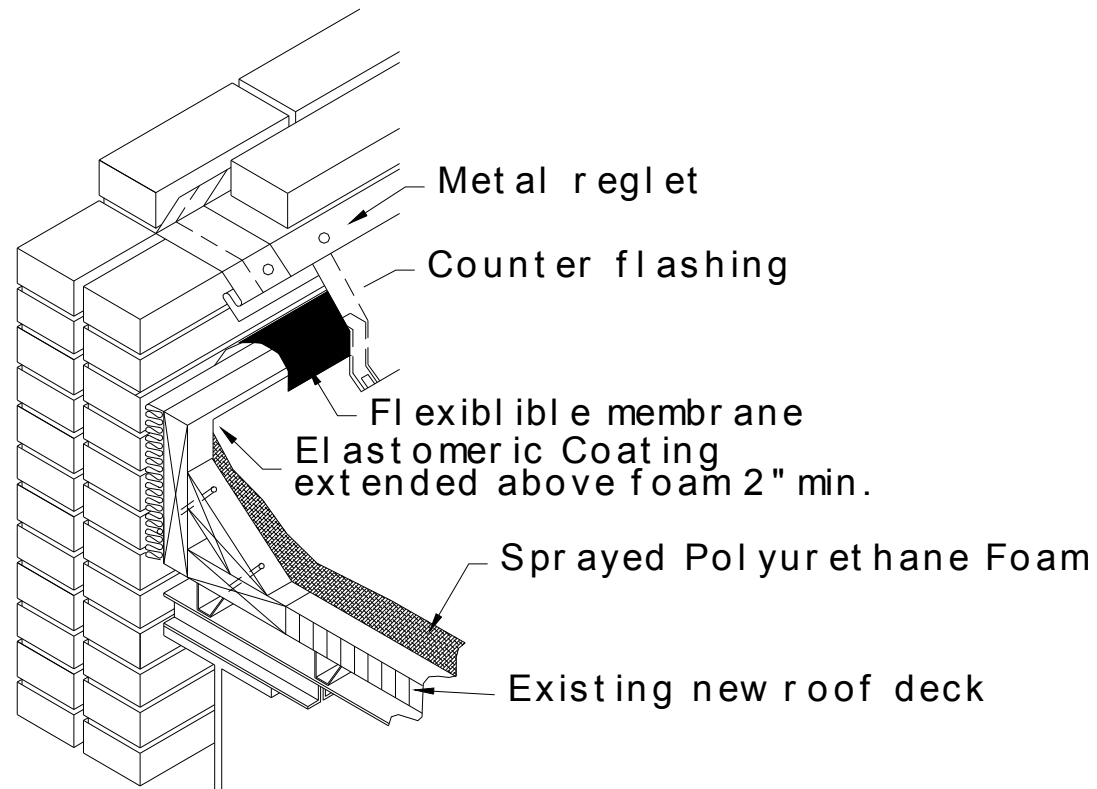


# NEW FLASHING FOR WALL SUPPORTED DECK



**NOTE:**  
This detail to be used only when the deck is supported by the wall

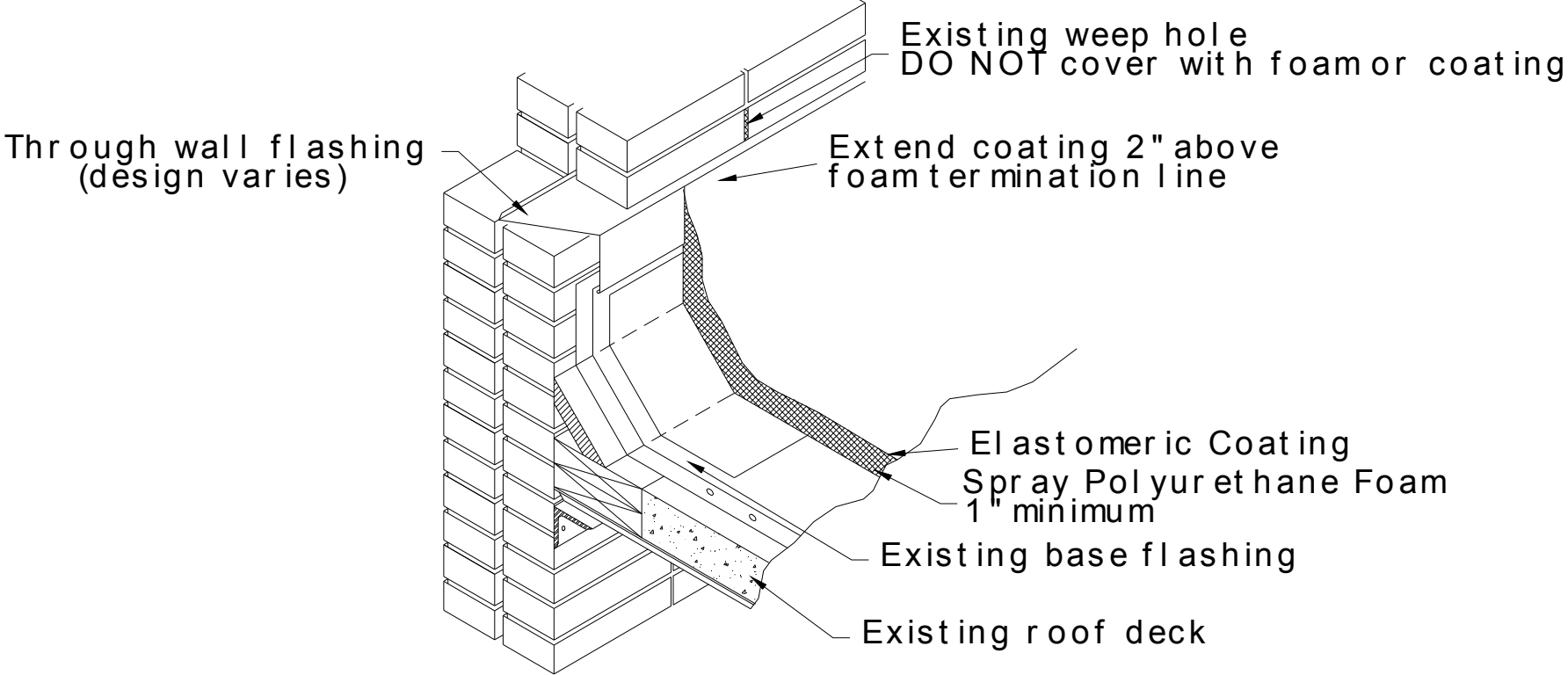
# FLASHING FOR NEW, NON-WALL SUPPORTED DECK



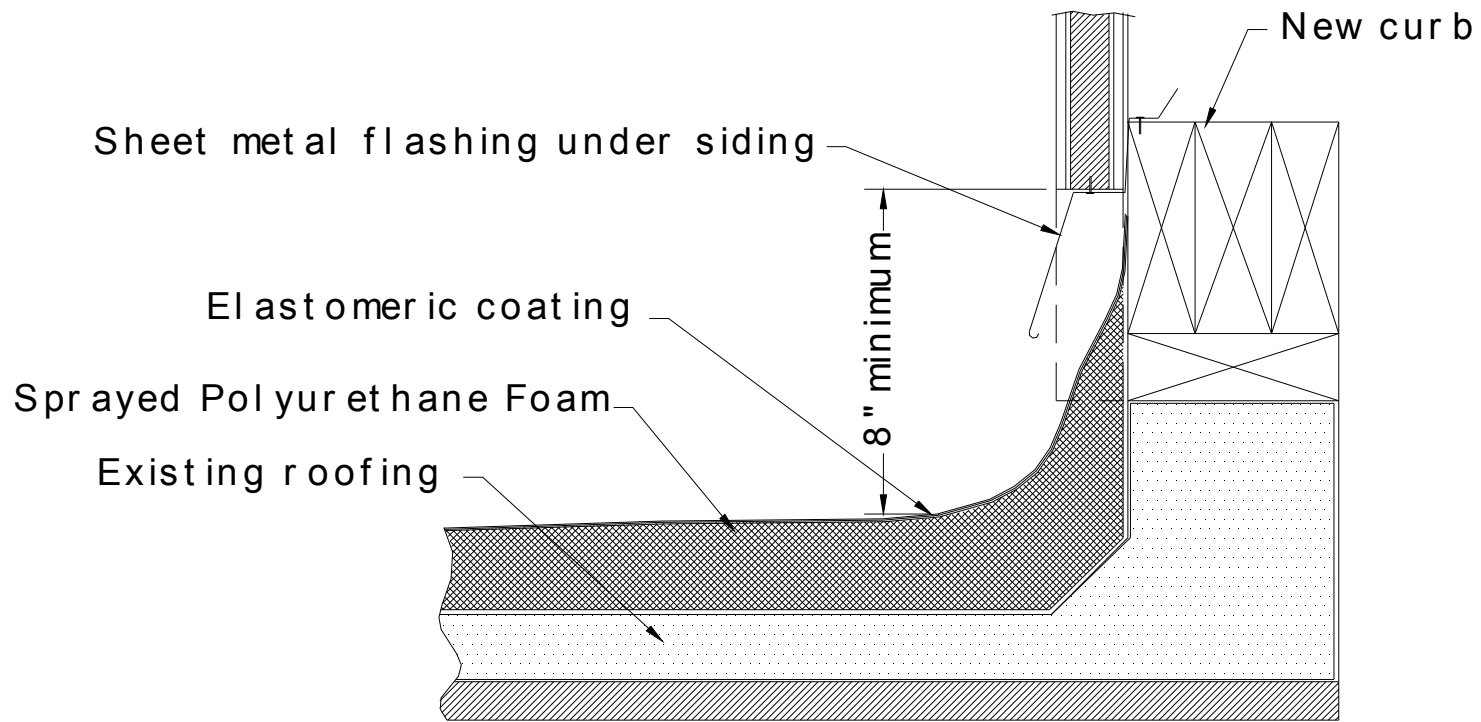
NOTE:  
Free height should be  
8" above new roof surface



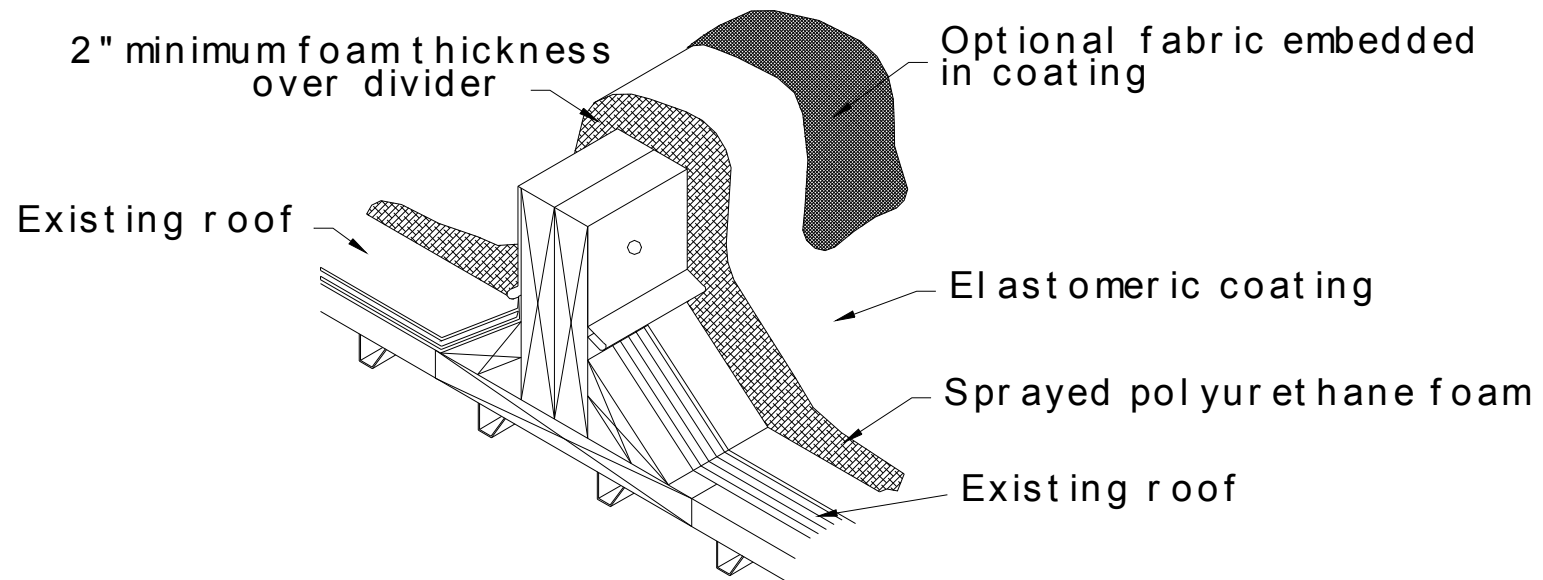
# HIGH WALL REMEDIAL THROUGH WALL FLASHING



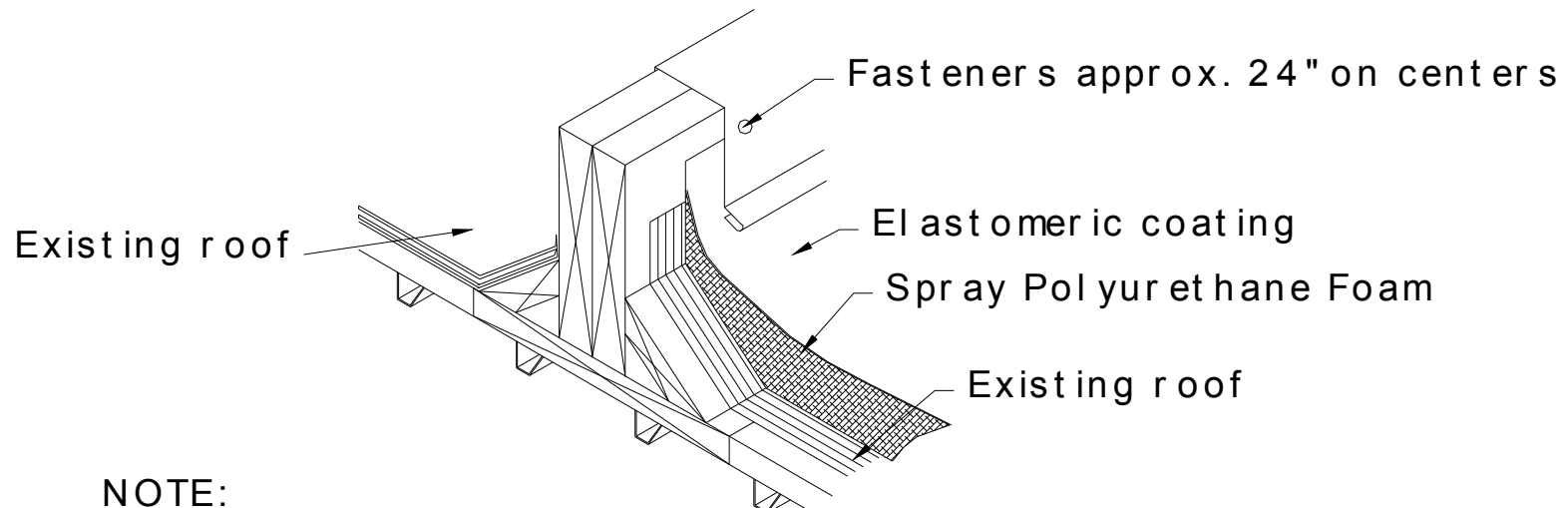
# NEW OR REMEDIAL SIDING OR HIGH WALL



# TYPICAL EXISTING AREA DIVIDER



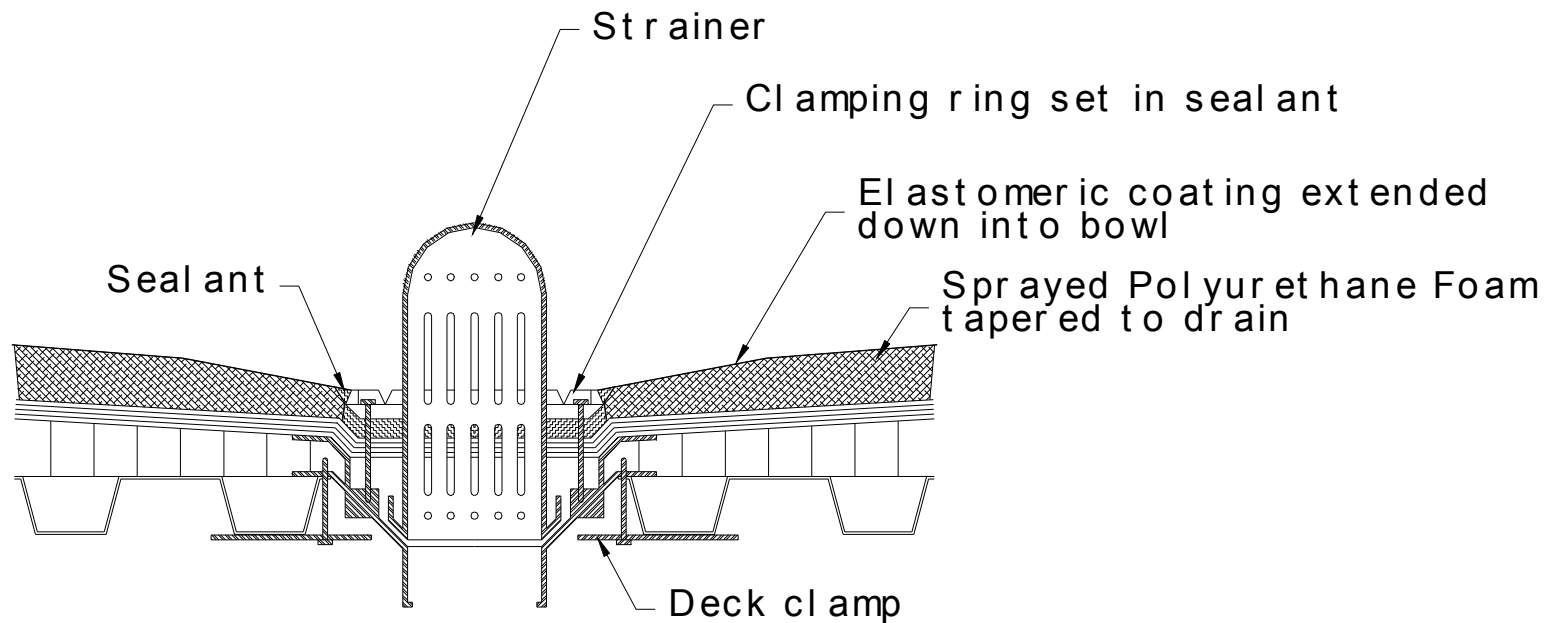
# REMEDIAL AREA DIVIDER



**NOTE:**

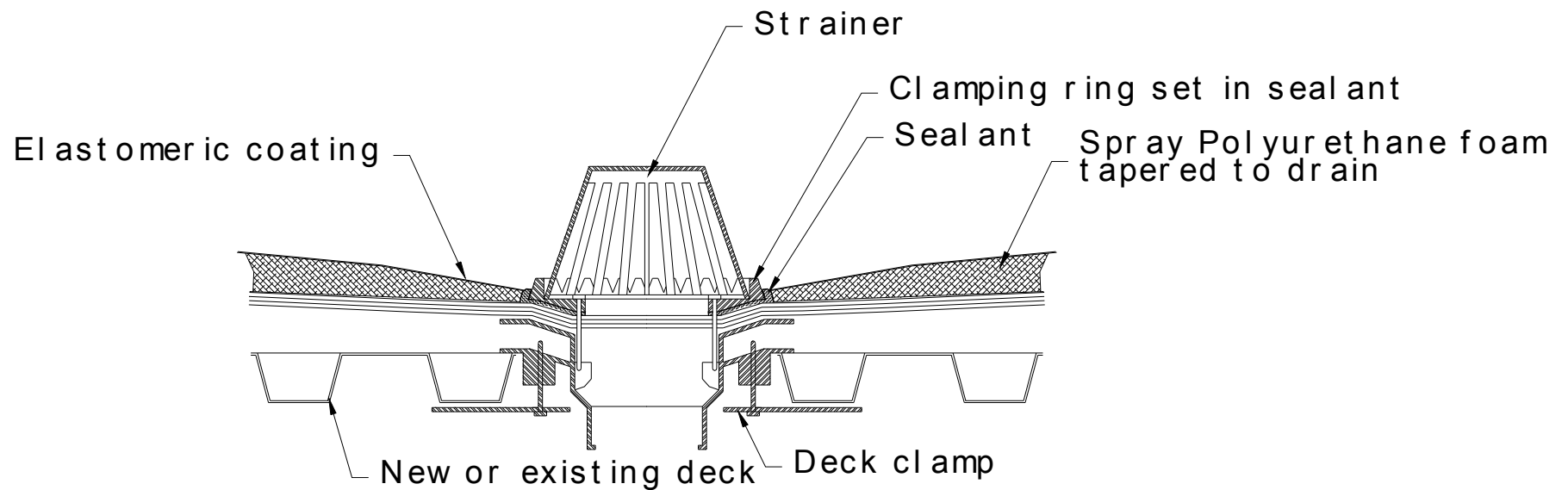
This area divider is designed simply to separate the existing roof system from the new sprayed-in-place polyurethane foam roof

# TYPICAL ROOF DRAIN



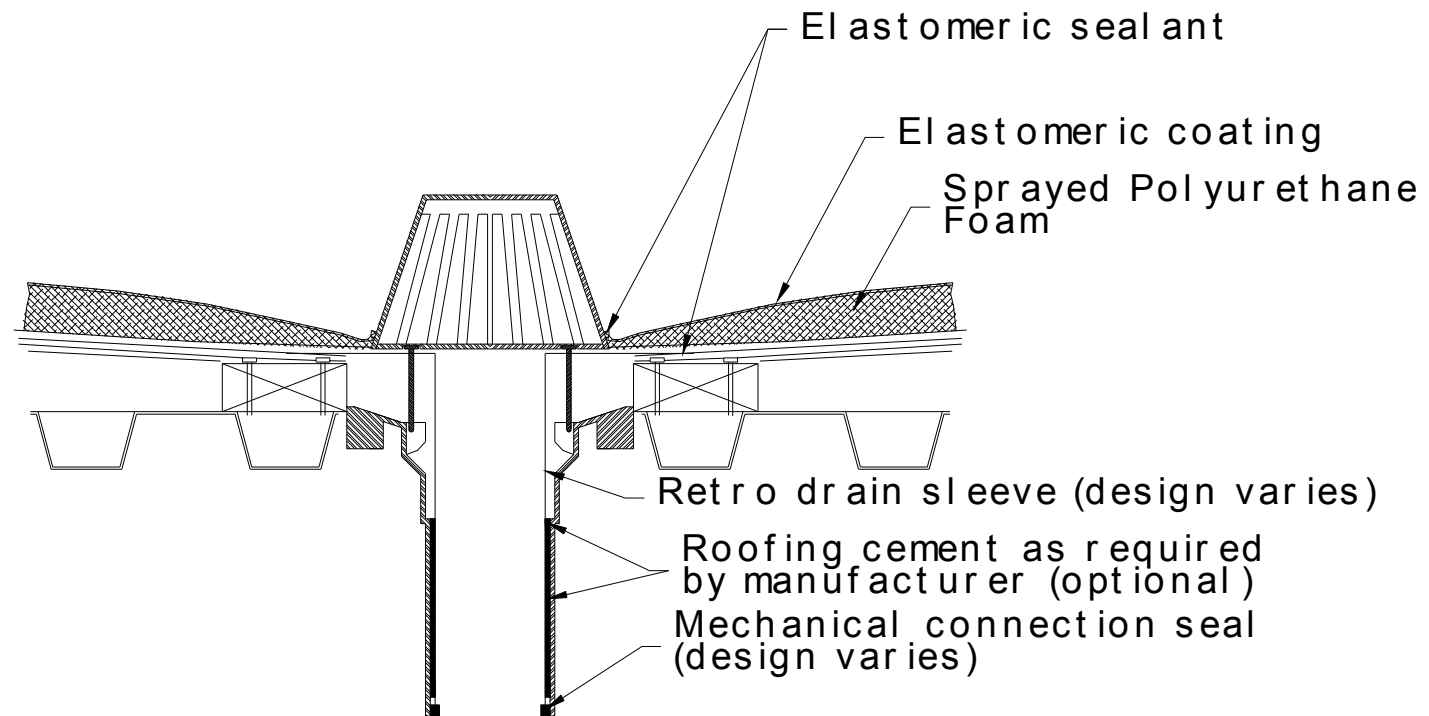
**NOTE:**  
Mask clamping ring prior to spray foam application  
V-cut foam at clamping ring and apply sealant

# NEW OR REMEDIAL ROOF DRAIN



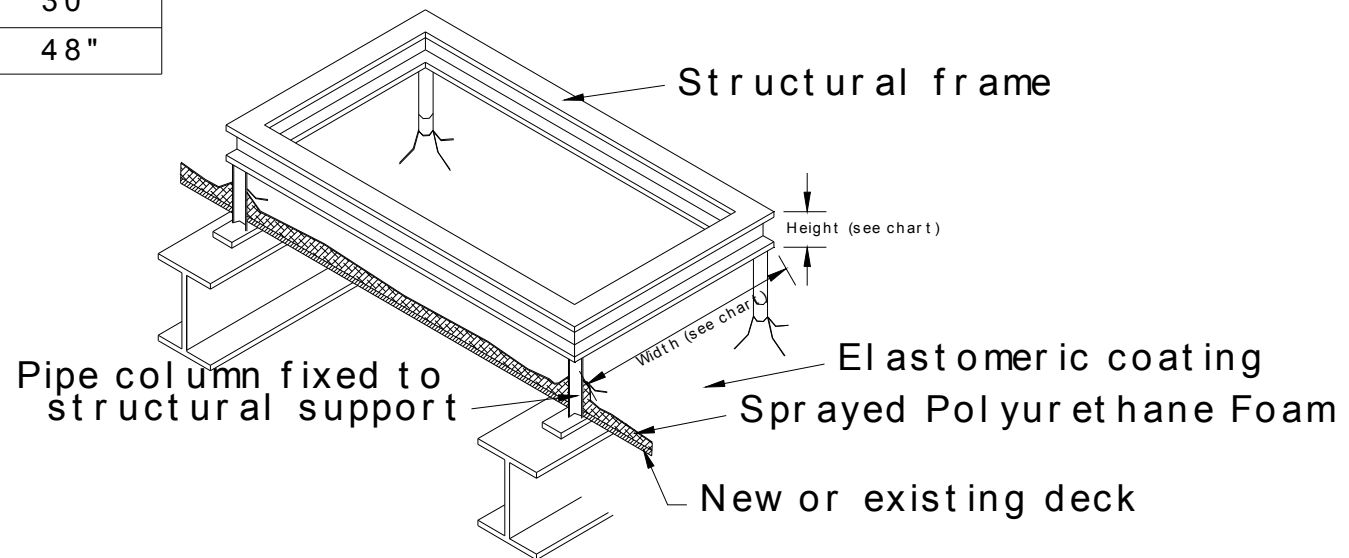
**NOTE:**  
Prior to seating clamping ring, set in sealant  
extend coating down into bowl

# REMEDIAL DRAIN INSERT



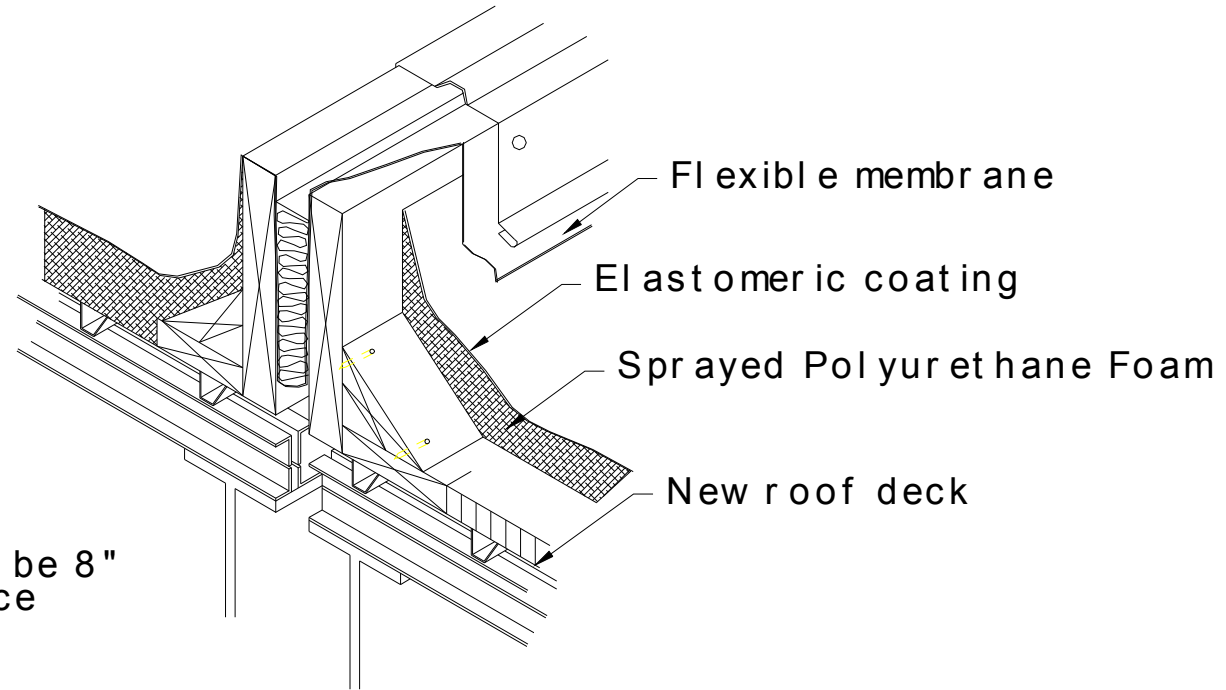
# MECHANICAL EQUIPMENT SUPPORT NEW & REMEDIAL

Width of Equipment	Height of Legs
Up to 24"	14"
25" to 36"	18"
36" to 48"	24"
48" to 60"	30"
60" and wider	48"



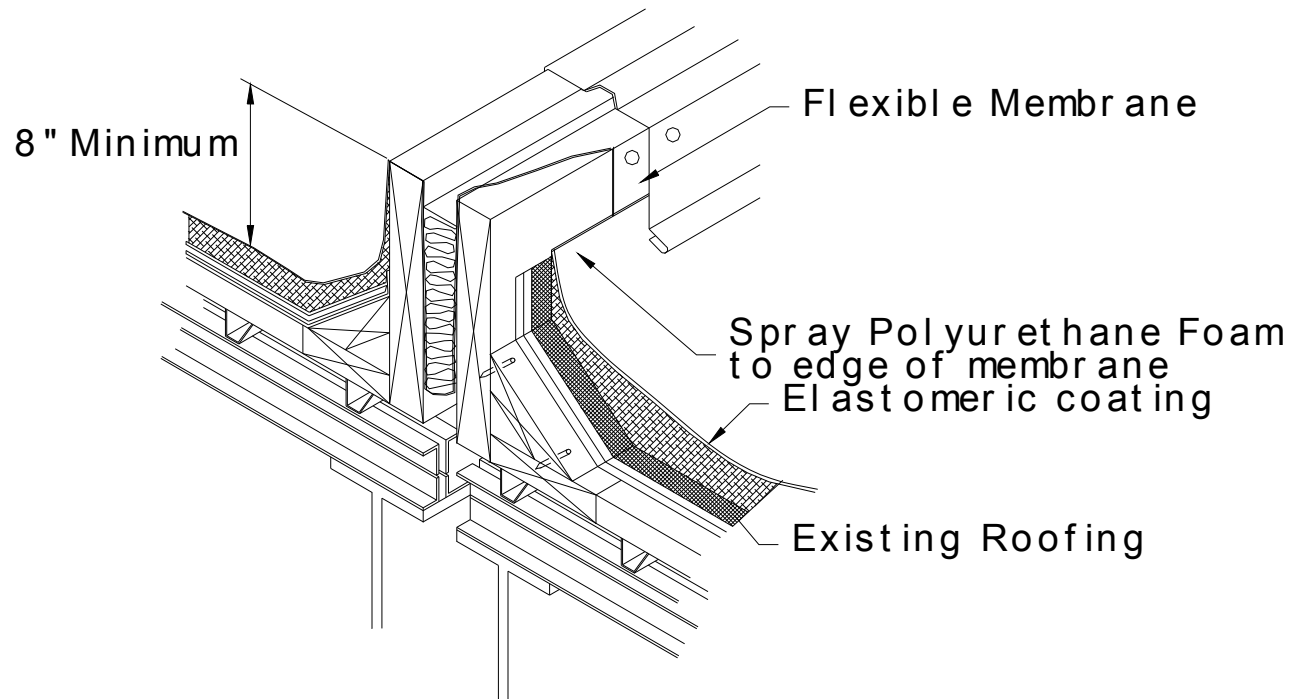


# NEW EXPANSION JOINT

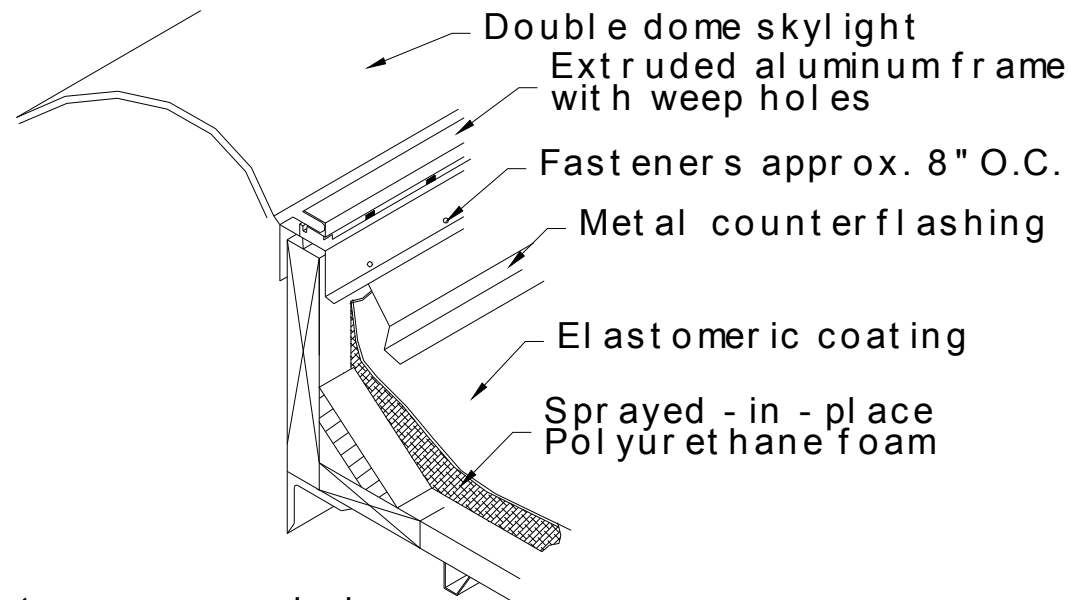


NOTE:  
Free height shall be 8"  
above roof surface

# REMEDIAL EXPANSION JOINT

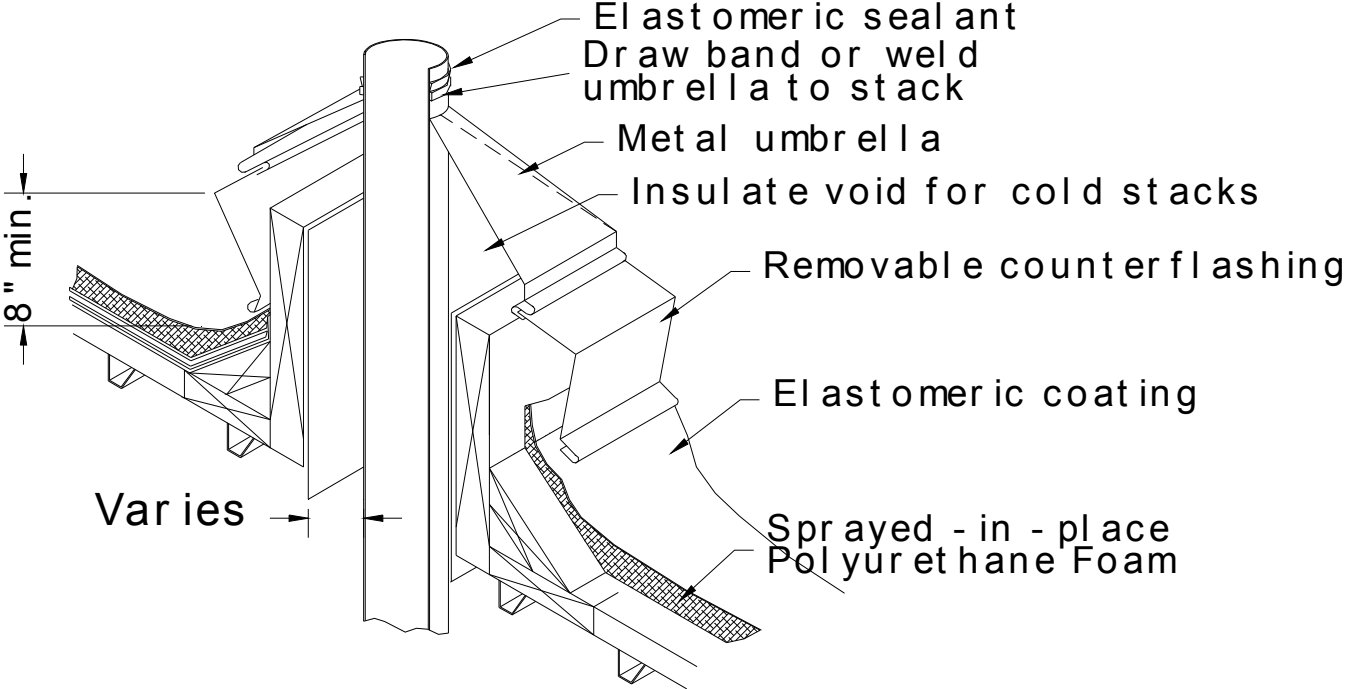


# SKYLIGHT, HATCH OR SMOKE VENT CURB



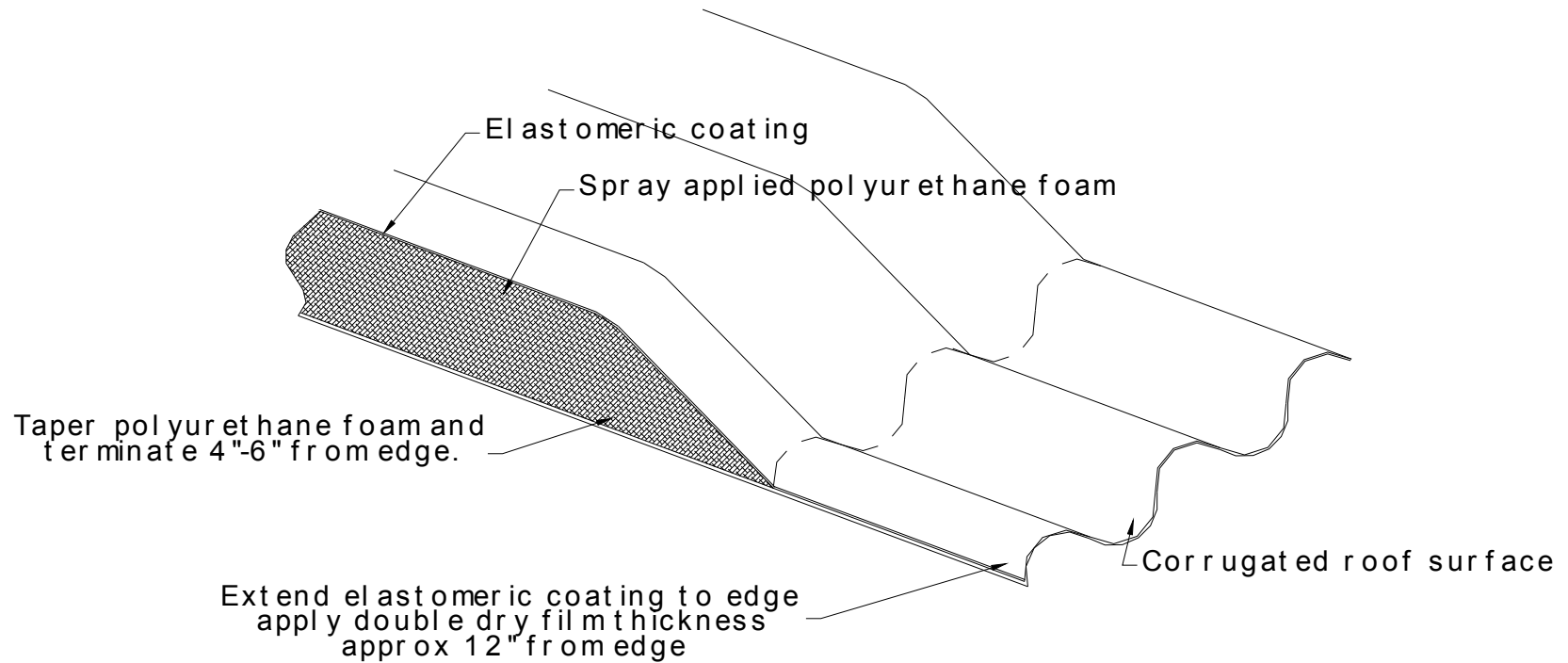
NOTE:  
On skylights, do not cover weep holes  
with polyurethane foam or coating

# NEW OR REMEDIAL HOT STACK FLASHING

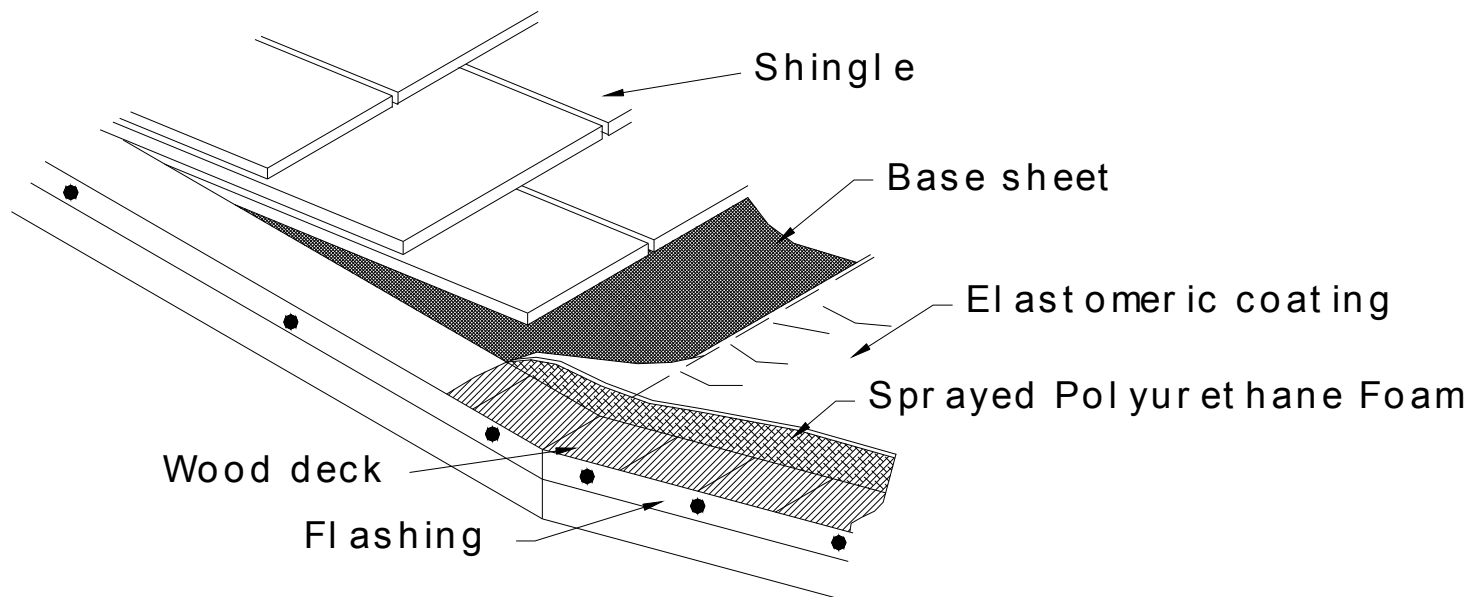


**NOTE:**  
The metal sleeve and the clearance necessary will depend on the temperature of the material handled by the stack

# CORRUGATED METAL ROOF EDGE NEW AND REMEDIAL

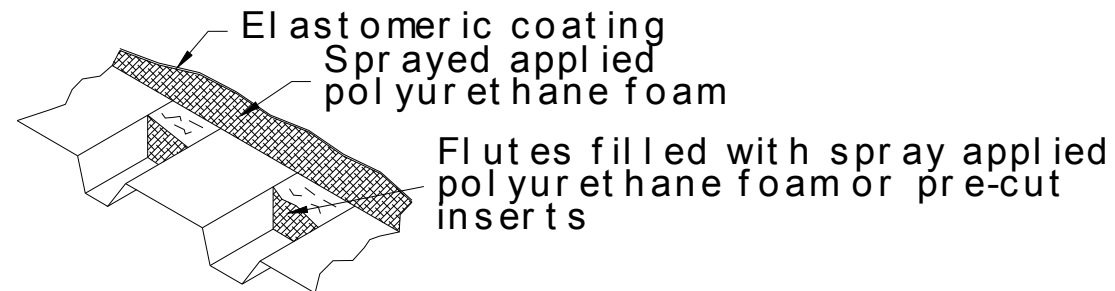
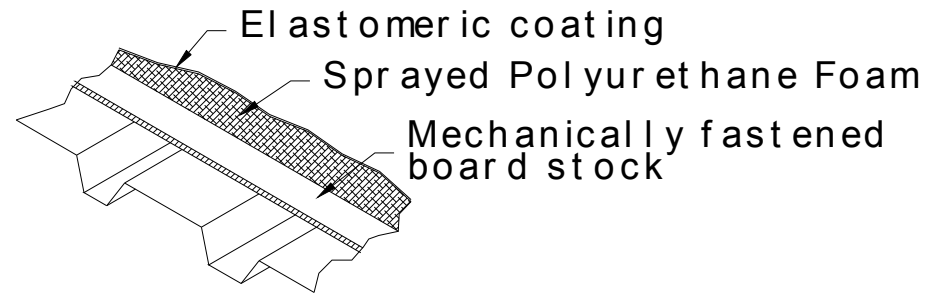


# FLAT ROOF TO SHINGLE TIE IN

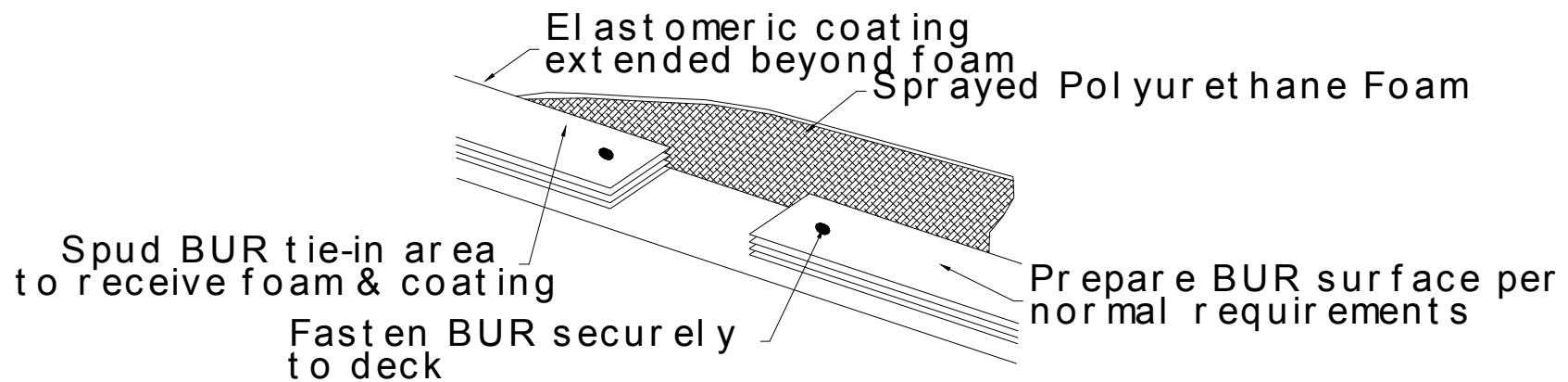


Note:  
Sprayed polyurethane foam  
must be applied beneath the  
base sheet

# NEW AND REMEDIAL FLUTED METAL DECK



# WATER STOP

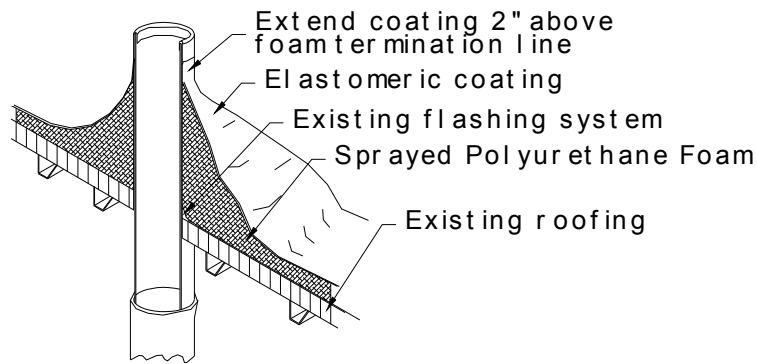


NOTE:  
This detail to be used when  
terminating a spud roof onto a BUR roof

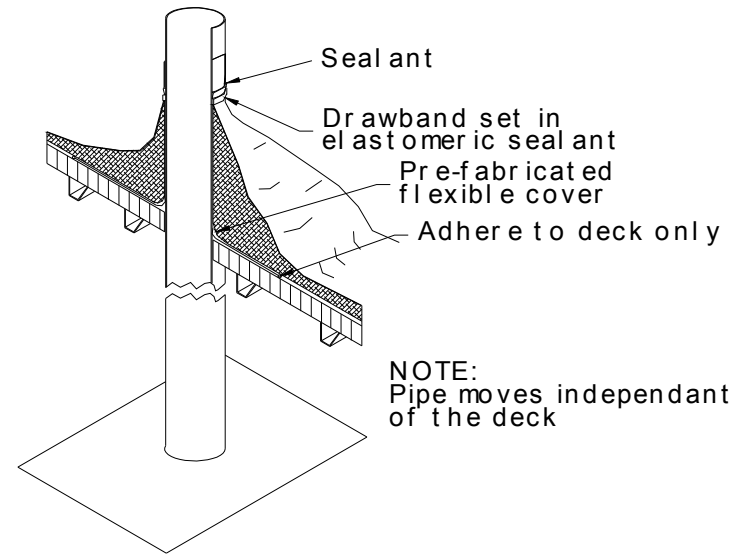


# REMEDIAL PROTRUSION FLASHING

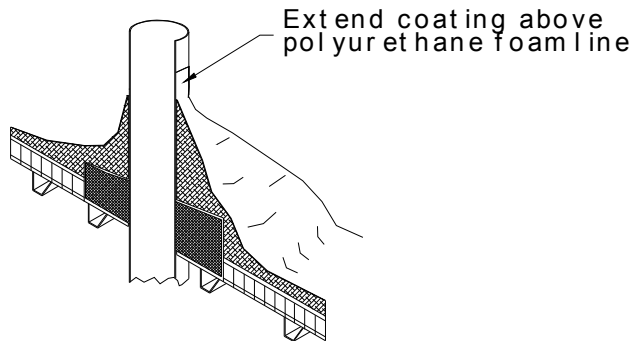
TYPICAL VENT PIPE



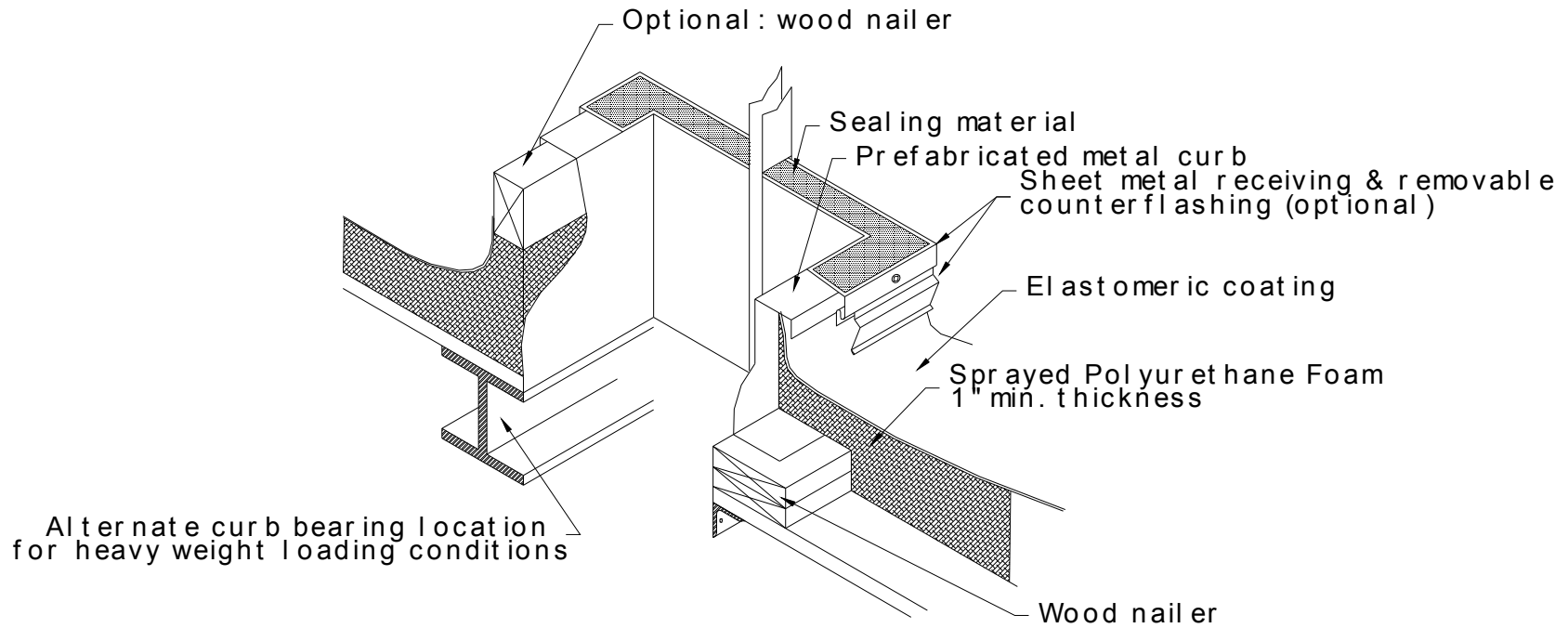
FOUNDATION SUPPORTED PIPE



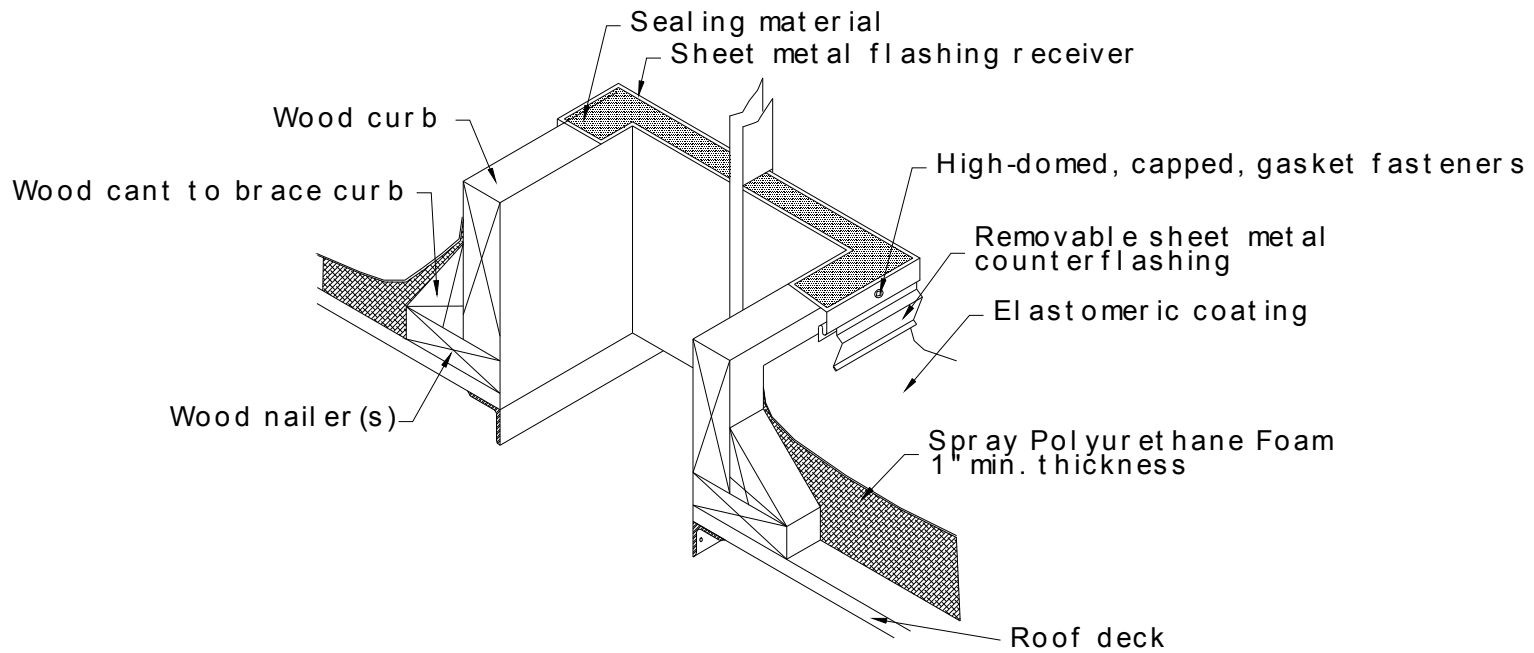
ENCAPSULATED PITCH POCKET



# RAISED CURB DETAIL FOR ROOFTOP AIR HANDLING UNITS, SKYLIGHT, HATCH, SMOKE VENT CURB & DUCTS (PREFABRICATED METAL CURB)



# RAISED CURB DETAIL FOR ROOFTOP AIR HANDLING UNITS, SKYLIGHT, HATCH, SMOKE VENT CURB & DUCTS (JOB SITE CONSTRUCTION WOOD CURB)



# REMEDIAL AIR CONDITIONER TREATMENT

NOTE:  
PIPE CONDENSATE TO DRAIN

