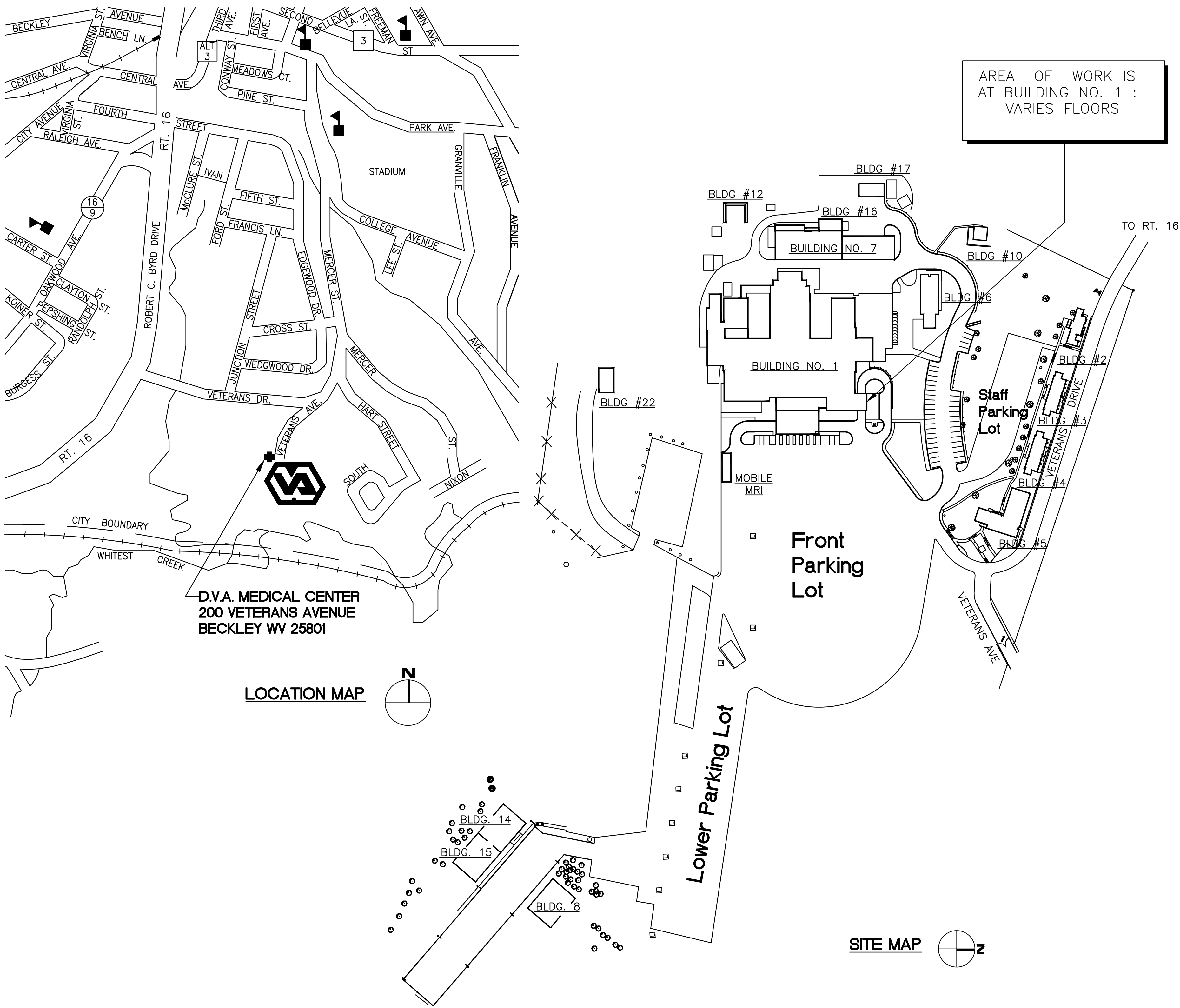




DEPARTMENT OF VETERANS  
AFFAIRS MEDICAL CENTER  
200 VETERANS AVENUE  
BECKLEY, WV 25801  
PROJECT NO. 517-11-105  
HVAC NEGATIVE AIR CORRECTIONS



PROJECT DRAWING INDEX

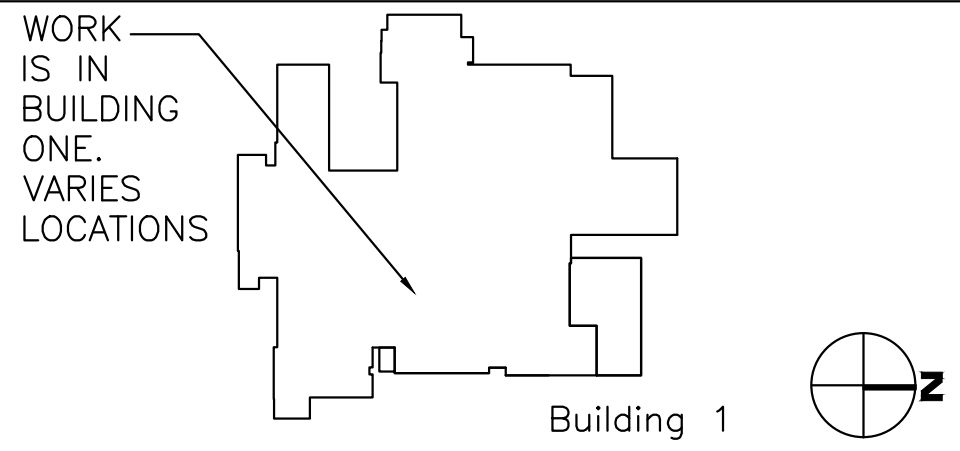
| DRAWING NUMBER | DRAWING TITLE   |
|----------------|---|
| GI001          | TITLE SHEET   |
| GI002          | GENERAL INFORMATION & ABBREVIATIONS                     |
| SF101          | EXISTING ROOF PARTIAL PLAN                              |
| AS100          | PARTIAL BASEMENT & FIRST FLOOR PLANS                    |
| AS101          | PARTIAL THIRD & SIXTH FLOOR PLANS                       |
| AS102          | PARTIAL FOURTH FLOOR/ROOF PLANS DEMOLITION              |
| AS103          | PARTIAL FOURTH FLOOR/ROOF PLANS NEW WORK                |
| AS200          | EXTERIOR ELEVATIONS AND DETAILS                         |
| AS300          | ROOF DETAILS  |
| PL001          | PLUMBING SYMBOLS, ABBREVIATIONS, & GENERAL NOTES        |
| PL100          | PARTIAL THIRD FLOOR PLAN PLUMBING                       |
| PL500          | PLUMBING DETAILS  |
| MS100          | SITE PLAN MECHANICAL NEW WORK                           |
| MD100          | PARTIAL 2ND & 3RD FLOOR PLAN MECHANICAL DEMOLITION      |
| MD101          | PARTIAL THIRD FLOOR PLAN MECHANICAL DEMOLITION          |
| MH001          | MECHANICAL SYMBOLS, ABBREVIATIONS, & GENERAL NOTES      |
| MH100          | PARTIAL BASEMENT FLR/ROOF PLAN MECHANICAL NEW WORK      |
| MH101          | PARTIAL SECOND FLOOR PLAN MECHANICAL NEW WORK           |
| MH102          | PARTIAL 3RD FLR AREA A MECHANICAL NEW WORK              |
| MH103          | PARTIAL 3RD FLR AREA B MECHANICAL NEW WORK              |
| MH104          | PARTIAL 4TH FLR PLAN AREA A MECHANICAL NEW WORK         |
| MH105          | PARTIAL 4TH FLR PLAN AREA B MECHANICAL NEW WORK         |
| MH106          | MECHANICAL SIXTH FLOOR PLAN MECHANICAL NEW WORK         |
| MH107          | MECHANICAL PENTHOUSE FLR PLAN MECHANICAL NEW WORK       |
| MH300          | MECHANICAL HVAC SECTIONS                                |
| MH500          | MECHANICAL DETAILS                                      |
| MH501          | MECHANICAL DETAILS                                      |
| MH600          | MECHANICAL SCHEDULES                                    |
| MH601          | MECHANICAL SCHEDULES                                    |
| MH700          | MECHANICAL TEMPERATURE CONTROL DETAILS                  |
| MH701          | MECHANICAL TEMPERATURE CONTROL DETAILS                  |
| MH702          | MECHANICAL TEMPERATURE CONTROL DETAILS                  |
| MH703          | MECHANICAL TEMPERATURE CONTROL DETAILS                  |
| MH704          | MECHANICAL TEMPERATURE CONTROL DETAILS                  |
| EP001          | ELECTRICAL SYMBOLS, ABBREVI. & GENERAL NOTES            |
| EP100          | PARTIAL BSMT & 1ST FLOOR PLANS ELECTRICAL NEW WORK      |
| EP101          | PARTIAL 2ND & 3RD FLOOR PLAN ELECTRICAL NEW WORK        |
| EP102          | PARTIAL 3RD & 4TH FLOOR PLAN ELECTRICAL DEMO & NEW WORK |
| EP103          | ELECTRICAL PENTHOUSE FLR PLAN ELECTRICAL NEW WORK       |

GENERAL NOTES

- ALL WORK SHALL COMPLY WITH ANY & ALL BUILDING CODES, REGULATIONS AND REQUIREMENTS ADOPTED BY THE AUTHORITIES HAVING JURISDICTION. IT IS THE RESPONSIBILITY OF THE CONTRACTORS TO COMPLY WITH THE APPROPRIATE SECTION OF THE CODE DURING EACH PHASE OF THE WORK.
- THE INFORMATION SHOWN REGARDING EXISTING CONDITIONS ON ALL DRAWINGS AND AS NOTED ELSEWHERE WERE BASED ON FIELD OBSERVATIONS AS OF FEBRUARY 2012. THE CONTRACTOR IS RESPONSIBLE TO FIELD VERIFY ANY AND ALL DIMENSIONS AND CONDITIONS PRIOR TO SUBMITTING A BID. DRAWINGS ARE NOT TO BE SCALED FOR LOCATIONS OR NEW WORK ITEMS.
- CONTRACTOR MUST HAVE PRIOR APPROVAL OF COTR FOR ALL MATERIAL STORAGE, EQUIPMENT SETUP, AND STAGING FOR ALL DEMOLITION AND OR NEW WORK. OFFSITE STORAGE MAY BE PROVIDED BY CONTRACTOR.
- NORMAL MEDICAL CENTER WORK HOURS ARE 8:00 A.M. TO 4:30 P.M. MONDAY THRU FRIDAY. SEE SPECIFICATIONS FOR SCHEDULING OF OUTAGES WITH VA (COTR). ALL WORK REQUIRING AFTER NORMAL WORKING HOURS OR WEEKEND HOURS SHALL HAVE THE APPROVAL OF THE COTR.
- CONTRACTOR IS TO INCLUDE AFTER HOUR WORK IN THE BID. THIS WORK WILL REQUIRE AFTER NORMAL WORKING HOURS OR WEEKEND HOURS SHALL HAVE THE APPROVAL OF THE COTR.
- CONTRACTORS ARE TO KEEP ALL ROADWAYS AND ENTRANCES TO THE MEDICAL CENTER OPEN AND OR ACCESSIBLE AT ALL TIMES, UNLESS APPROVED BY THE COTR.
- CONTRACT DRAWINGS AND SPECIFICATIONS REPRESENT A FINISHED STRUCTURE. THEY DO NOT INDICATE METHODS OF CONSTRUCTION. THE CONTRACTORS SHALL PROVIDE ALL MEASURES NECESSARY TO PROTECT THE STRUCTURE AND PERSONNEL DURING CONSTRUCTION. CONTRACTORS ARE TO KEEP THE MEDICAL CENTER CLEAN AND FREE FROM DEBRIS AT ALL TIMES.
- THESE DRAWINGS ARE DIAGRAMMATICAL AND SHOW ONLY THE INTENT OF WORK TO BE COMPLETED. THE CONTRACTOR IS RESPONSIBLE FOR PROVIDING ALL LABOR AND OR MATERIALS FOR A COMPLETE WORKING SYSTEM AS REQUIRED. ANY ERRORS OR OMISSIONS SHOULD BE REPORTED TO THE CONTRACTING OFFICER FOR CLARIFICATION PRIOR TO BID.
- THE GOVERNMENT HAS SALVAGE RIGHTS TO ANY AND OR ALL EQUIPMENT OR MATERIAL BEING REMOVED UNDER THIS CONTRACT AS DIRECTED BY THE COTR.
- WHERE PAINTING IS REQUIRED FOR GENERAL BUILDING AND STRUCTURES, PAINT TO MATCH EXISTING WITH SAME TYPE & COLOR, OR AS DIRECTED BY COTR.

ENVIRONMENTAL -GENERAL NOTES

- ANY ASBESTOS INSPECTION OR ABATEMENT WORK SHALL BE CONDUCTED BY EPA ACCREDITED PERSONNEL IN ACCORDANCE WITH VA REQUIREMENTS AND ALL APPLICABLE FEDERAL, STATE, AND LOCAL REGULATIONS IN EFFECT AT THE TIME THE WORK IS DONE.
- ASBESTOS-CONTAINING MATERIALS IN THE HOSPITAL WERE ABATED/REMOVED DURING PREVIOUS RENOVATIONS. HOWEVER, IN THE EVENT THAT SUSPECT ASBESTOS-CONTAINING MATERIAL (ACM) NOT PREVIOUSLY IDENTIFIED ARE DISCOVERED THE CONTRACTOR SHALL STOP WORK AND IMMEDIATELY NOTIFY THE CONTRACTING OFFICER.
- ALL PAINTED SURFACES ARE ASSUMED TO CONTAIN LEAD. THE CONTRACTOR MUST COMPLY WITH ALL APPLICABLE VA REQUIREMENTS AND THE OSHA CONSTRUCTION STANDARD FOR LEAD 29 CFR 1926.62 WHEN DISTURBING LEAD-CONTAINING MATERIALS.
- ALL EXISTING SOLDERED CONNECTIONS ARE ASSUMED TO CONTAIN LEAD. THE CONTRACTOR MUST COMPLY WITH ALL APPLICABLE VA REQUIREMENTS AND THE OSHA CONSTRUCTION STANDARD FOR LEAD 29 CFR 1926.62 WHEN DISTURBING LEAD-CONTAINING MATERIALS.



**COL**  
Collaborative Design, Ltd.  
2927 Tuller Parkway, Suite 200  
Dublin, Ohio 43017  
Tel 614.798.1515  
Project Number: 11025

APPROVED: SAFETY MANAGER  
JUSTIN GREENE  
APPROVED: INFECTION CONTROL  
SHAWN M. MILLS  
APPROVED:

APPROVED: CHIEF, FACILITIES MANAGEMENT SERVICE LINE  
CLAYTON HELMS, CHFM  
APPROVED: ASSOCIATE DIRECTOR for PATIENT CARE SERVICES/EXECUTIVE NURSE  
DEBRA LEGG, RN, MSN  
APPROVED: SERVICE LINE CHIEF

APPROVED: MEDICAL CENTER DIRECTOR  
KARIN L. McGRAW, MSN, FACHE  
APPROVED: ASSOCIATE DIRECTOR  
J. BRIAN NIMMO, MS  
APPROVED: CHIEF OF STAFF  
JOHN D. BERRYMAN, M. D.

DRAWING TITLE:  
TITLE SHEET  
PROJECT TITLE:  
HVAC NEGATIVE AIR CORRECTIONS  
DATE  
7/06/2012  
REV.  
SCALE  
AS NOTED

DRAWING No.  
GI001  
PROJECT No.  
517-11-105  
DRAWN BY:  
TB  
CHECKED BY:  
GB

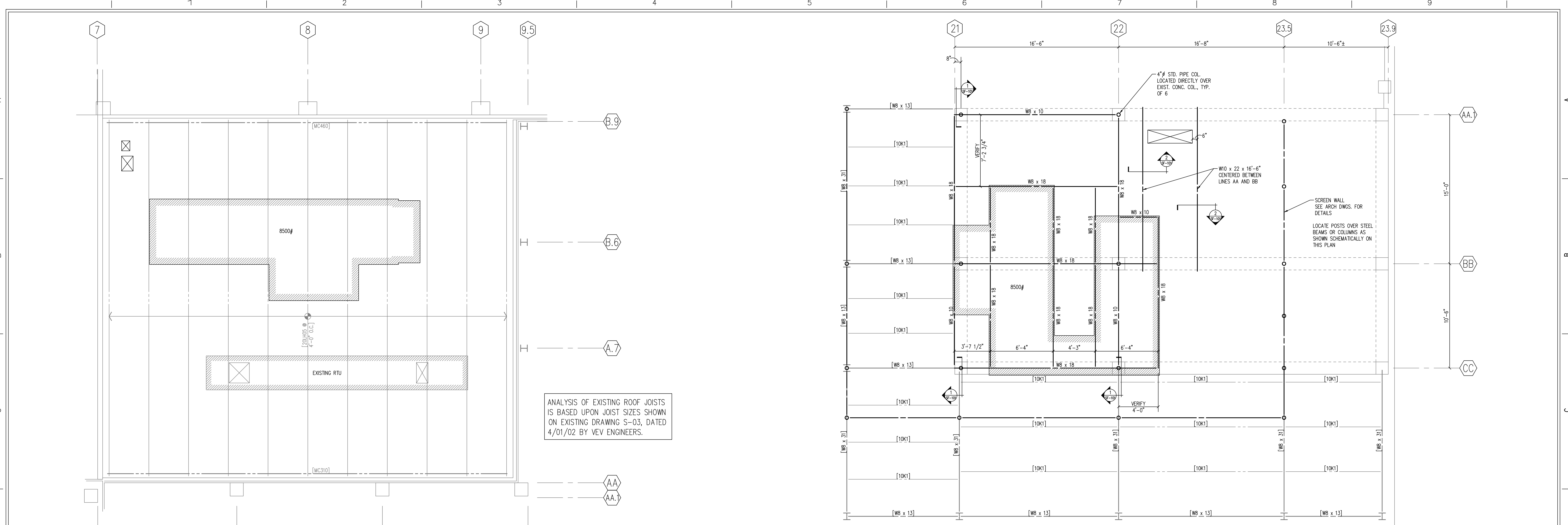
Veterans Affairs  
Medical Center  
200 Veterans Av  
Beckley, WV.  
25801







three inches = one foot  
one and one-half inch = one foot  
one-half inch = one foot  
three-quarters inch = one foot  
one-half inch = one foot  
three-eighths inch = one foot  
one-quarter inch = one foot  
one-eighth inch = one foot



ROOF FRAMING PLAN

1/4" = 1'-0"



- ROOF FRAMING NOTES
- EXISTING ROOF CONSTRUCTION: 1 1/2" METAL DECK ON STEEL JOISTS.
  - INDICATES ROOF OPENING. DETERMINE EXACT SIZE AND LOCATION FROM ARCHITECTURAL AND MECHANICAL DRAWINGS. PROVIDE A FRAME PER SECTION 4 ON SF-101 AT ALL OPENINGS GREATER THAN 8" PERPENDICULAR TO THE DECK SPAN.
  - INDICATES MECHANICAL LOADS SUPPORTED ON ROOF. COORDINATE THE SIZE, LOCATION, AND WEIGHT OF ALL UNITS WITH THE MECHANICAL CONTRACTOR. PROVIDE A ROOF FRAME AT UNIT CURBS SIMILAR TO SECTION 4 ON SF-101 AND REINFORCE JOISTS AT CONCENTRATED LOAD SUPPORT LOCATIONS PER SECTION 3 ON SF-101.
  - THE GENERAL CONTRACTOR IS TO FIELD VERIFY ALL EXISTING CONDITIONS AND DIMENSIONS PRIOR TO SUBMITTING SHOP DRAWINGS. IF CONDITIONS OR DIMENSIONS VARY FROM THOSE SHOWN ON THE CONSTRUCTION DRAWINGS, CONTACT THE ARCHITECT PRIOR TO COMMENCING WITH CONSTRUCTION.

ROOF FRAMING PLAN

1/4" = 1'-0"



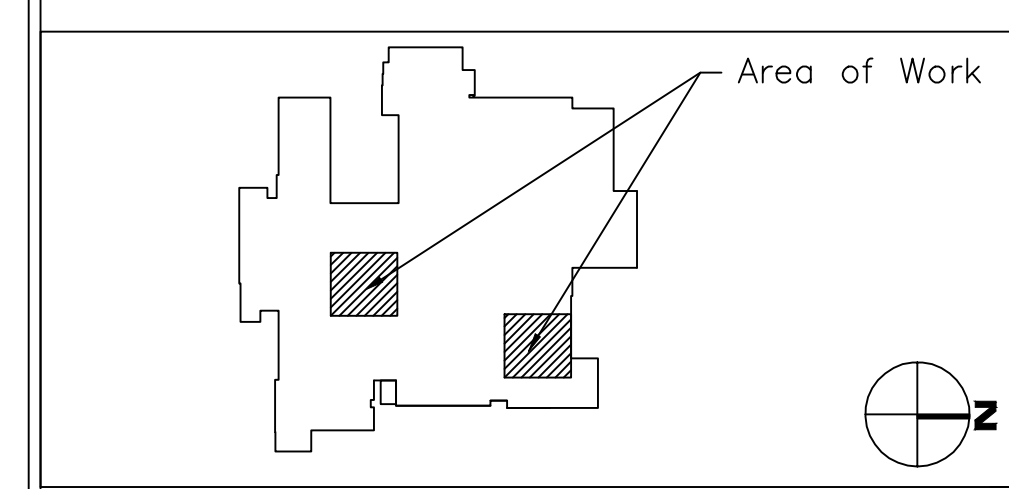
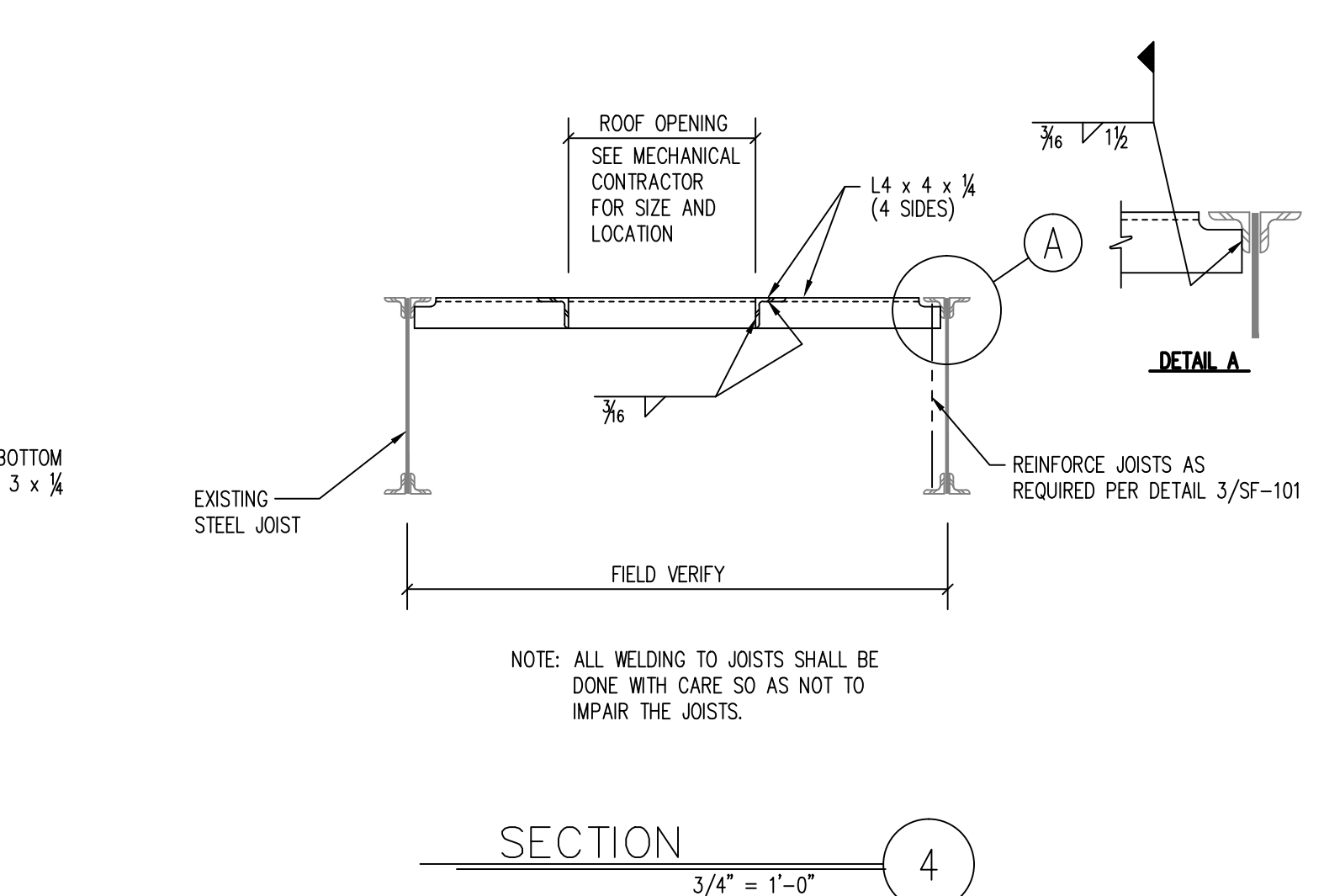
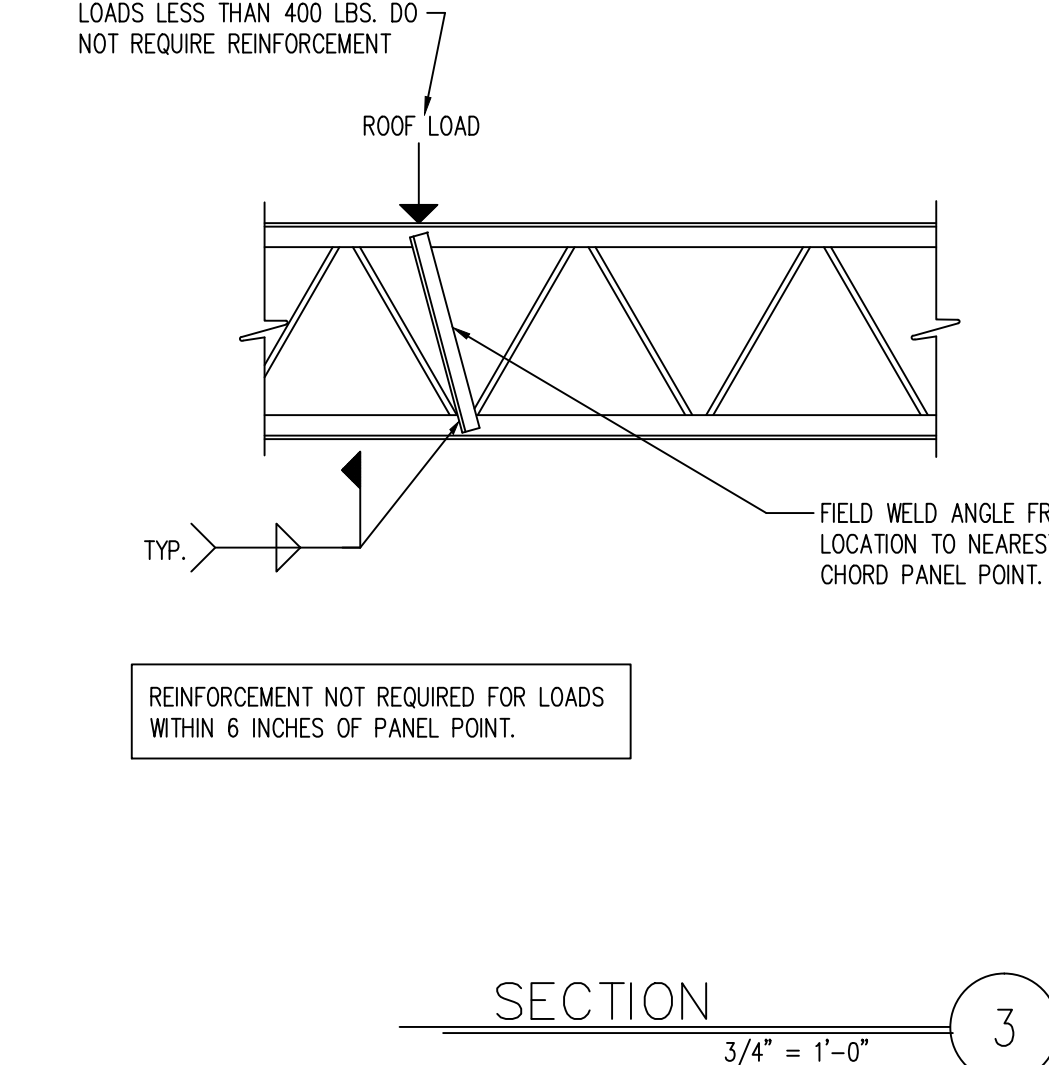
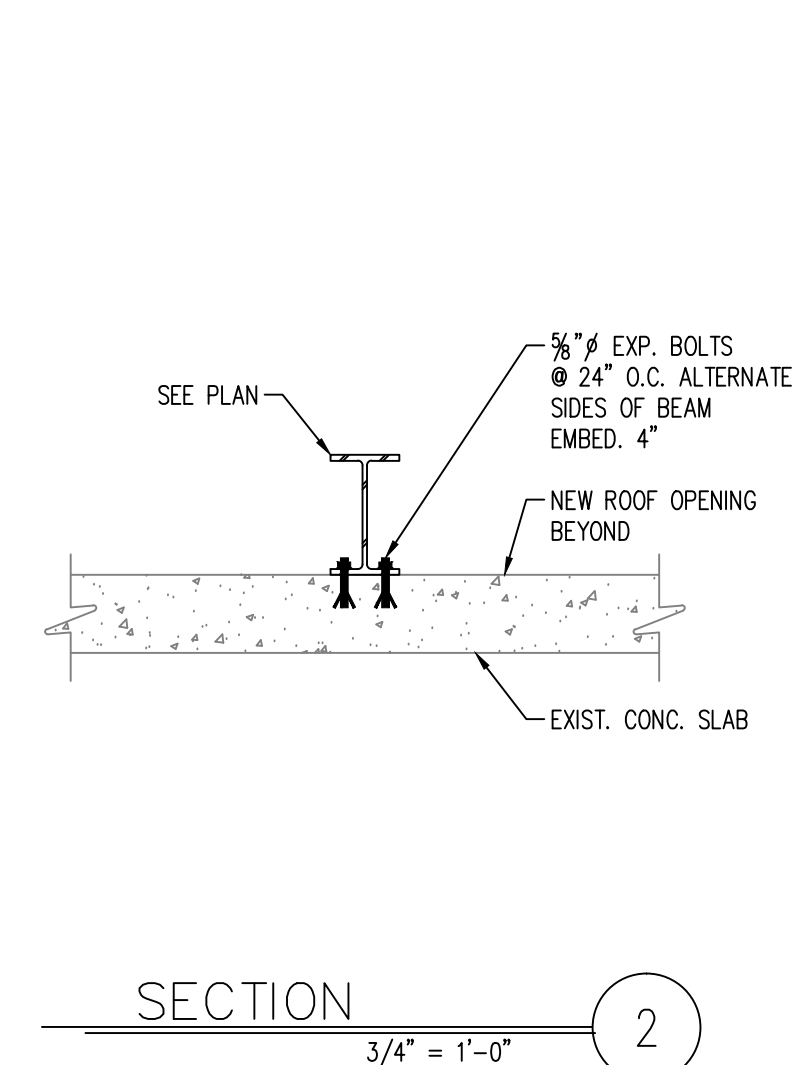
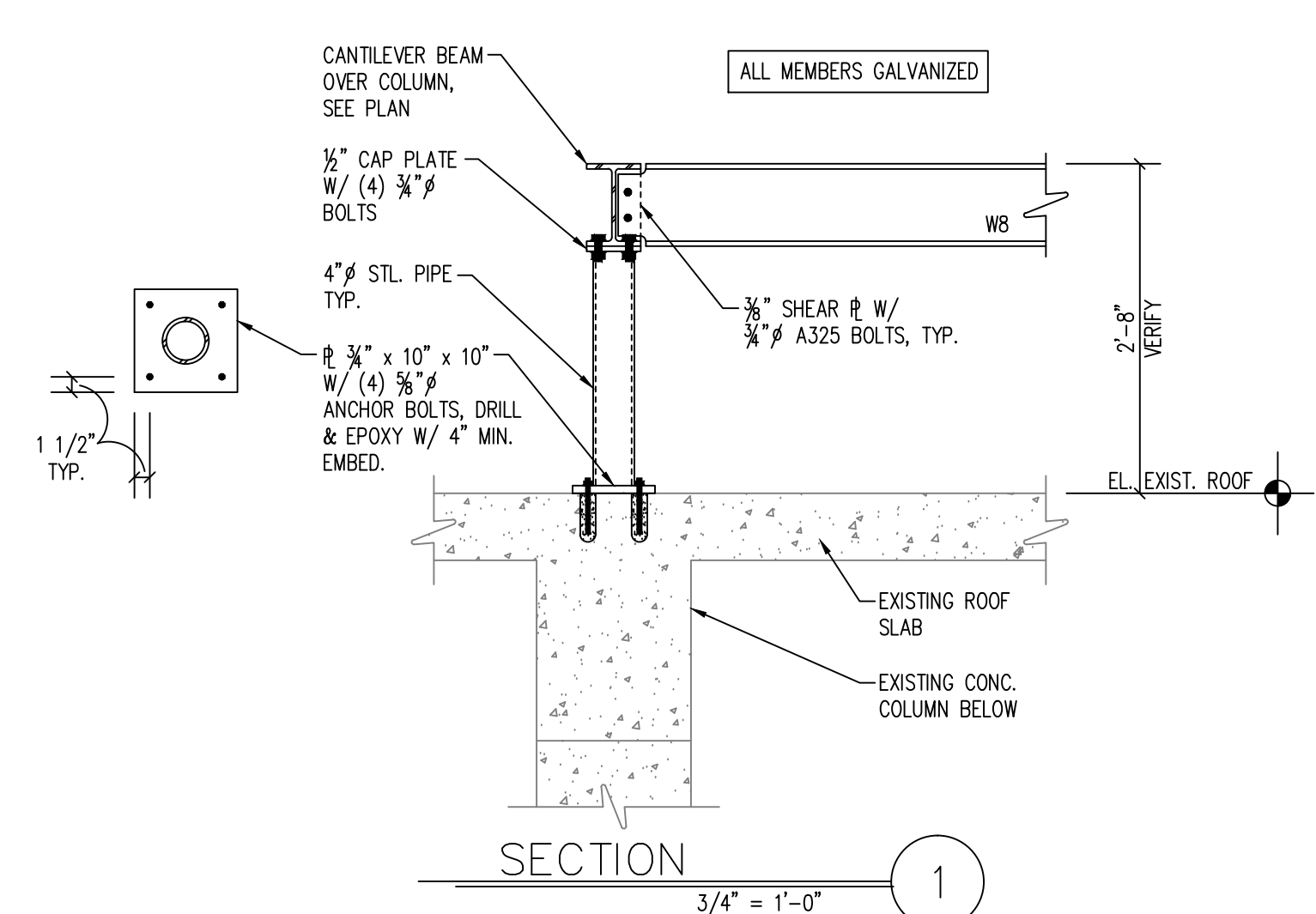
- ROOF FRAMING NOTES
- EXISTING ROOF CONSTRUCTION: 6 1/2" CONCRETE ONE-WAY SLAB.
  - INDICATES ROOF OPENING. DETERMINE EXACT SIZE AND LOCATION FROM ARCHITECTURAL AND MECHANICAL DRAWINGS. SURVEY THE EXISTING CONCRETE SLAB TO DETERMINE LOCATION OF EXISTING REBAR AND LOCATE OPENING TO CUT AS FEW REBAR AS POSSIBLE. DO NOT OVER-CUT OPENING.
  - INDICATES MECHANICAL LOADS SUPPORTED ON ROOF. COORDINATE THE SIZE, LOCATION, AND WEIGHT OF ALL UNITS WITH THE MECHANICAL CONTRACTOR.
  - THE GENERAL CONTRACTOR IS TO FIELD VERIFY ALL EXISTING CONDITIONS AND DIMENSIONS PRIOR TO SUBMITTING SHOP DRAWINGS. IF CONDITIONS OR DIMENSIONS VARY FROM THOSE SHOWN ON THE CONSTRUCTION DRAWINGS, CONTACT THE ARCHITECT PRIOR TO COMMENCING WITH CONSTRUCTION.
  - [XXX] INDICATES EXISTING FRAMING MEMBER.

GENERAL STRUCTURAL NOTES

- GENERAL
- IT IS SOLELY THE CONTRACTOR'S RESPONSIBILITY TO DETERMINE ERECTION PROCEDURE AND SEQUENCE AND TO INSURE THE SAFETY OF THE BUILDING AND ITS COMPONENT PARTS DURING ERECTION. THIS INCLUDES THE ADDITION OF WHATEVER SHORING, SHEETING, TEMPORARY BRACING, GUYS OR TIEDOWNS WHICH MIGHT BE NECESSARY. SUCH MATERIAL SHALL REMAIN THE CONTRACTOR'S PROPERTY AFTER COMPLETION OF THE PROJECT.
  - IT IS SOLELY THE CONTRACTOR'S RESPONSIBILITY TO FOLLOW ALL APPLICABLE SAFETY CODES AND REGULATIONS DURING ALL PHASES OF CONSTRUCTION.
  - MECHANICAL EQUIPMENT LOADS, OPENINGS AND STRUCTURE IN ANY WAY RELATED TO MECHANICAL REQUIREMENTS ARE SHOWN FOR BIDDING PURPOSES ONLY. CONTRACTOR SHALL OBTAIN APPROVAL OF MECHANICAL AND OTHER TRADES BEFORE PROCEEDING WITH SUCH PORTION OF THE WORK. EXCESS COST RELATED TO VARIATION IN MECHANICAL REQUIREMENTS TO BE BORNE BY MECHANICAL CONTRACTOR.
  - SHOULD ANY OF THE DETAILED INSTRUCTIONS SHOWN ON THE PLANS CONFLICT WITH THE GENERAL STRUCTURAL NOTES, THE SPECIFICATIONS OR WITH EACH OTHER, THE STRICTEST PROVISION SHALL GOVERN.
  - GOVERNING CODE: 2000 INTERNATIONAL BUILDING CODE WITH WEST VIRGINIA AMENDMENTS.
  - DESIGN LOADS:
    - ROOF LIVE LOADS: (IN ACCORDANCE WITH 1607.1.1) 20 PSF
    - ROOF SNOW LOADS: (IN ACCORDANCE WITH 1608) 24 PSF
    - SLAB ROOF SNOW LOAD (Ps) 24 PSF
    - SNOW EXPOSURE FACTOR (Ce) 1.0
    - SNOW LOAD IMPORTANCE FACTOR (Is) 1.2
    - THERMAL FACTOR (Ct) 1.0
  - WIND LOADS: (IN ACCORDANCE WITH 1609)
    - BASIC WIND SPEED (V) 90 MPH
    - WIND IMPORTANCE FACTOR (IW) 1.15
    - EXPOSURE CATEGORY (WE) EXPOSURE B
    - INTERNAL PRESSURE COEFFICIENT (Cp) +/- 0.18
    - COMPONENTS AND CLADDING PRESSURE 420 PSF / - 25 PSF
  - SEISMIC DESIGN DATA:
    - SEISMIC OCCUPANCY CATEGORY IV
    - SEISMIC IMPORTANCE FACTOR (IE) 1.5
    - SEISMICITY 275
    - SITE CLASS C
    - SDS 0.77
    - SOT 0.88
    - SEISMIC DESIGN CATEGORY 220
    - SEISMIC FORCE RESISTING SYSTEM 088
    - STEEL NOT SPECIFICALLY DETAILED FOR SEISMIC RESISTANCE
    - DESIGN BASE SHEAR (V) 110 (kip / unit)
    - SEISMIC RESPONSE COEFFICIENT (Cs) 1.0 (kip / unit)
    - RESPONSE MODIFICATION FACTOR (R) 1.0
    - ANALYSIS PROCEDURE EQUIVALENT LATERAL FORCE

STRUCTURAL STEEL

1. MATERIALS:
- STRUCTURAL STEEL WIDE FLANGE SHAPES: ASTM A992, FY = 50 KSI;
  - STRUCTURAL STEEL CHANNELS, L-ANGLES, ETC.: ASTM A36, FY = 36 KSI;
  - HIGH STRENGTH BOLTS: ASTM A325 OR A490, FY = 55 KSI;
  - ANCHOR BOLTS: ASTM F1554 FY=36 KSI;
  - ELECTRODES: SERIES E70;
2. SPECIFICATIONS: WELDING PERSONNEL AND PROCEDURES ARE TO BE QUALIFIED PER AWS D1.1, UNLESS SPECIFICALLY SHOWN OTHERWISE. DESIGN, FABRICATION AND ERECTION TO BE GOVERNED BY THE LATEST REVISION OF THE FOLLOWING:
- AISC SPECIFICATION FOR THE DESIGN, FABRICATION AND ERECTION OF STRUCTURAL STEEL FOR BUILDINGS;
  - AISC CODE OF STANDARD PRACTICE;
  - STRUCTURAL STEEL EDITION 1.0 OF THE AMERICAN WELDING SOCIETY;
  - SPECIFICATIONS FOR STRUCTURAL JOINTS USING ASTM A325 OR A490 BOLTS.
3. FINISH:
- ALL STEEL IS TO BE HOT-DIP GALVANIZED TO ASTM A123.
4. MISCELLANEOUS:
- DIMENSIONS TO STEEL SUPPORTING OR CONNECTING TO MECHANICAL AND OTHER EQUIPMENT AS SHOWN ON ARCHITECTURAL, MECHANICAL AND/OR ON STRUCTURAL DRAWINGS ARE SHOWN FOR BIDDING PURPOSES ONLY. CONTRACTOR SHALL RECONCILE EXACT SIZE AND LOCATION WITH MECHANICAL AND OTHER REQUIREMENTS BEFORE PROCEEDING WITH THE WORK.
  - GROUT UNDER BEARING PLATES TO BE NON-SHRINKING TYPE. GROUT SHALL BE NON-METALLIC.
  - PROVIDE HEAVY WASHER AT ALL ANCHOR BOLTS.
  - FINISH ENDS OF ALL COLUMNS, STIFFENERS AND ALL OTHER MEMBERS IN DIRECT BEARING.



**COL**  
Collaborative Design, Ltd.  
2727 Tuller Parkway, Suite 200  
Dublin, Ohio 43017  
Tel 614.798.1515  
Project Number: 10068

APPROVED: SAFETY MANAGER  
JUSTIN GREENE  
APPROVED: INFECTION CONTROL  
SHAWN M. MILLS  
APPROVED:

APPROVED: CHIEF, FACILITIES MANAGEMENT SERVICE LINE  
CLAYTON HELMS, CHFM  
APPROVED: ASSOCIATE DIRECTOR for PATIENT CARE  
SERVICES/EXECUTIVE NURSE  
DEBRA LEGG, RN, MSN  
APPROVED: SERVICE LINE CHIEF

APPROVED: MEDICAL CENTER DIRECTOR  
KARIN L. McGRAW, MSN, FACHE  
APPROVED: ASSOCIATE DIRECTOR  
J. BRIAN NIMMO, MS  
APPROVED: CHIEF OF STAFF  
JOHN D. BERRYMAN, M. D.

DRAWING TITLE:  
**EXISTING ROOF PARTIAL PLAN**  
PROJECT TITLE:  
**HVAC NEGATIVE AIR CORRECTIONS**  
DATE  
**07/06/2012**  
REV.  
SCALE

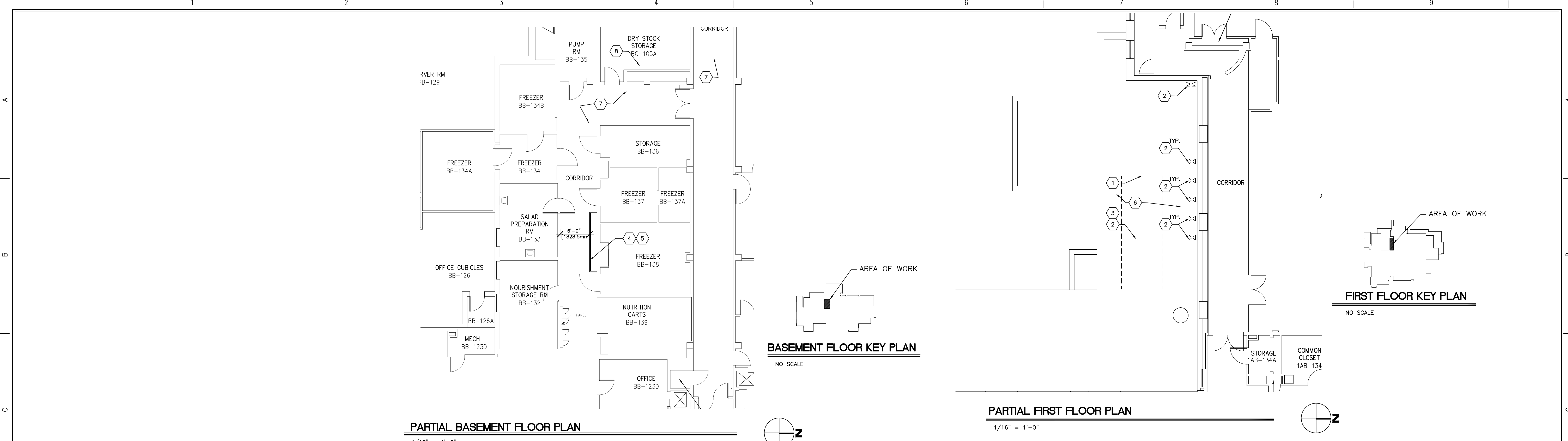
DRAWING No.  
**SF-101**  
PROJECT No.  
**517-11-105**  
DRAWN BY:  
**JUS**  
CHECKED BY:  
**CAD**

**Veterans Affairs  
Medical Center  
200 Veterans Av  
Beckley, WV.  
25801**





three inches = one foot  
one and one-half inch = one foot  
one-half inch = one foot  
three-quarters inch = one foot  
one-half inch = one foot  
three-eighths inch = one foot  
one-quarter inch = one foot  
one-eighth inch = one foot



CODED NOTES

- 1 REMOVE AREA OF THE EXISTING ROOF SYSTEM DOWN TO EXISTING ROOF DECK TO INSTALL NEW HVAC UNIT CURB AND CUT OPENINGS AS REQUIRED. VERIFY SIZES NEEDED WITH HVAC CONTRACTOR PRIOR TO CUTTING THE OPENINGS. SEE MECHANICAL DRAWINGS.
- 2 CONTRACTOR TO PROVIDE ROOF FLASHING ON AND AROUND NEW HVAC UNIT CURB AND DUCT PENETRATIONS AS REQUIRED. SEE MECHANICAL DRAWINGS. VERIFY WITH COTR AND MANUFACTURER/INSTALLER THE REQUIREMENTS TO MAINTAIN EXISTING ROOF WARRANTY. CONTRACTOR TO INSURE THAT NEW WORK HAS POSITIVE DRAINAGE AROUND EQUIPMENT TO EXISTING ROOF DRAINS. COORDINATE WITH COTR. SEE SHEET AS300 FOR TYPICAL DETAILS.
- 3 NEW MECHANICAL UNIT CURB, FILL CURB WITH RIGID INSULATION TO MIN. 16", COORDINATE WITH MECHANICAL UNIT UTILITIES.
- 4 NEW 2-1/2" METAL STUD WITH 3/8" GYP. BOARD DUCT ENCLOSURE WALL
- 5 REMOVE EXISTING LAY IN CEILING, AND GRID AS REQUIRED TO INSTALL NEW DUCT ENCLOSURE WALL AND DO NEW HVAC WORK. REMOVE AS MUCH CEILING AS REQUIRED. REPLACE THE CEILING IN KIND. PROVIDE NEW TRIM, ETC. TO COMPLETE INSTALLATION. PROVIDE NEW CEILING TILE IF ANY ARE BROKEN. TILES TO MATCH EXISTING. REMOVE EXISTING LIGHTS, HVAC DEVICES, ETC. AS REQUIRED. SEE MECHANICAL AND ELECTRICAL DRAWINGS FOR ADDITIONAL INFORMATION.
- 6 SEE STRUCTURAL NOTES THIS SHEET.
- 7 REMOVE EXISTING LAY IN CEILING, AND GRID AS REQUIRED TO INSTALL NEW DUCT RUN AND DO NEW HVAC WORK. REMOVE AS MUCH CEILING AS REQUIRED. REPLACE THE CEILING IN KIND. PROVIDE NEW TRIM, ETC. TO COMPLETE INSTALLATION. PROVIDE NEW CEILING TILE IF ANY ARE BROKEN. TILES TO MATCH EXISTING. REMOVE EXISTING LIGHTS, HVAC DEVICES, ETC. AS REQUIRED. SEE MECHANICAL AND ELECTRICAL DRAWINGS FOR ADDITIONAL INFORMATION.
- 8 REMOVE EXISTING LAY-IN CEILING TO EXPOSE THE EXISTING PLASTER CEILING ABOVE. REMOVE EXISTING PLASTER CEILING, CEILING SUPPORTS ETC. AS REQUIRED ABOVE EXISTING LAY-IN CEILING TO GET THE NEW DUCT RUN INSTALLED. SEE MECHANICAL AND ELECTRICAL DRAWINGS FOR ADDITIONAL INFORMATION. REINSTALL EXISTING LAY-IN CEILING, PROVIDE NEW GRID AND TILES TO MATCH EXISTING.

GENERAL DEMOLITION / CONSTRUCTION NOTES

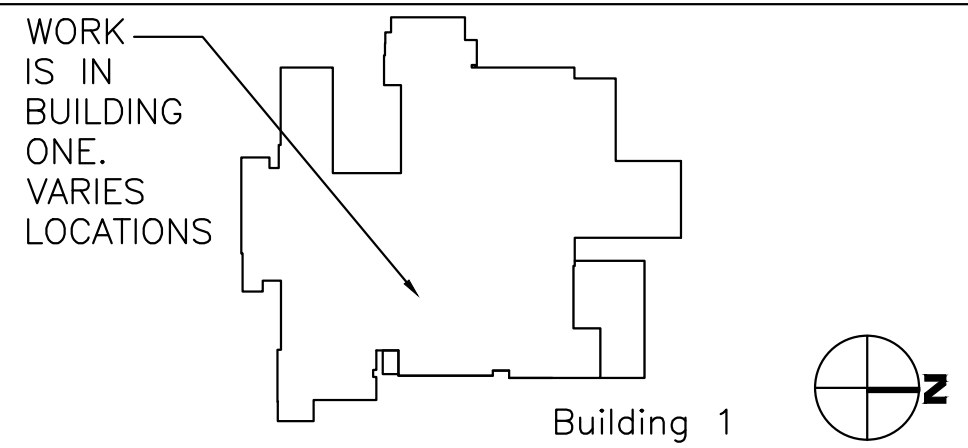
1. SEE SHEET G1002 FOR ADDITIONAL GENERAL NOTES.
2. COORDINATE ALL DEMOLITION ACTIVITIES WITH COTR.
3. OBSERVE ALL VA RULES AND REGULATIONS DURING DEMOLITION.
4. CONTRACTOR SHALL TAKE ADEQUATE PRECAUTIONS TO PROTECT ALL ADJACENT AND REMAINING BUILDING COMPONENTS DURING DEMOLITION. CONTRACTOR TO REPAIR ANY ITEMS OR AREAS DAMAGED DURING CONSTRUCTION AT NO COST TO THE VA.
5. ALL DIMENSIONS TO BE VERIFIED IN FIELD WITH EXISTING CONDITIONS.
6. REPLACE AND/OR REPAIR ALL DAMAGED MATERIALS AND OTHER MATERIALS IN AREAS AFFECTED BY DEMOLITION.
7. FIELD COORDINATE ALL EXISTING ITEMS THAT OBSTRUCT NEW CONSTRUCTION AND RESOLVE ITEM RELOCATION WITH COTR PRIOR TO DEMOLITION. ITEMS INCLUDED ARE, BUT ARE NOT LIMITED TO, ELECTRICAL CONDUIT, ELECTRICAL RECEPTACLES, SIGNAGE, DUCTWORK, FIRE ALARM, AND OTHER OBSTRUCTIONS. REFER TO ARCHITECTURAL DRAWINGS FOR ADDITIONAL INFORMATION.
8. COORDINATE ACTUAL LOCATION OF TEMPORARY CONSTRUCTION WALLS (DUST RESISTANT AND 1 HOUR RATED) IN THE FIELD WITH COTR. TEMPORARY CONSTRUCTION WALLS MAY NEED TO BE PHASED TO ALLOW CORRIDOR WIDTHS REQUIRED FOR EGRESS, PATIENT AND STAFF TRAFFIC.

STRUCTURAL NOTES

1. ROOF OPENINGS SHOULD FALL COMPLETELY BETWEEN CONCRETE JOISTS (ALLOWABLE ROUGH OPENING WIDTH APPROX. 18").
2. ROOF OPENINGS SHOULD NOT OCCUR IN ADJACENT PANS (NEED APPROX. 32" CLEAR BETWEEN OPENINGS)
3. ROOF OPENINGS SHOULD NOT BE MORE THAN 4'-0" LONG.
4. ALL CUTS THROUGH THE EXISTING CONCRETE ROOF MUST BE LOCATED BETWEEN EXISTING CONCRETE JOISTS. DO NOT CUT THROUGH ANY PART OF THE EXISTING CONCRETE JOISTS. DO NOT OVERCUT THE CORNERS OF THE NEW OPENING.

LEGEND

- EXISTING WALLS, DOORS, AND FIXTURES TO REMAIN  
EXISTING WALLS, DOORS, AND FIXTURES TO BE REMOVED



**CDL**  
Collaborative Design, Ltd.  
2727 Tuller Parkway, Suite 200  
Dublin, Ohio 43017  
Tel 614.798.1515  
Project Number: 11025

APPROVED: SAFETY MANAGER  
JUSTIN GREENE  
APPROVED: INFECTION CONTROL  
SHAWN M. MILLS  
APPROVED:

APPROVED: CHIEF, FACILITIES MANAGEMENT SERVICE LINE  
CLAYTON HELMS, CHFM  
APPROVED: ASSOCIATE DIRECTOR for PATIENT CARE  
SERVICES/EXECUTIVE NURSE  
DEBRA LEGG, RN, MSN  
APPROVED: SERVICE LINE CHIEF

APPROVED: MEDICAL CENTER DIRECTOR  
KARIN L. McGRAW, MSN, FACHE  
APPROVED: ASSOCIATE DIRECTOR  
J. BRIAN NIMMO, MS  
APPROVED: CHIEF OF STAFF  
JOHN D. BERRYMAN, M. D.

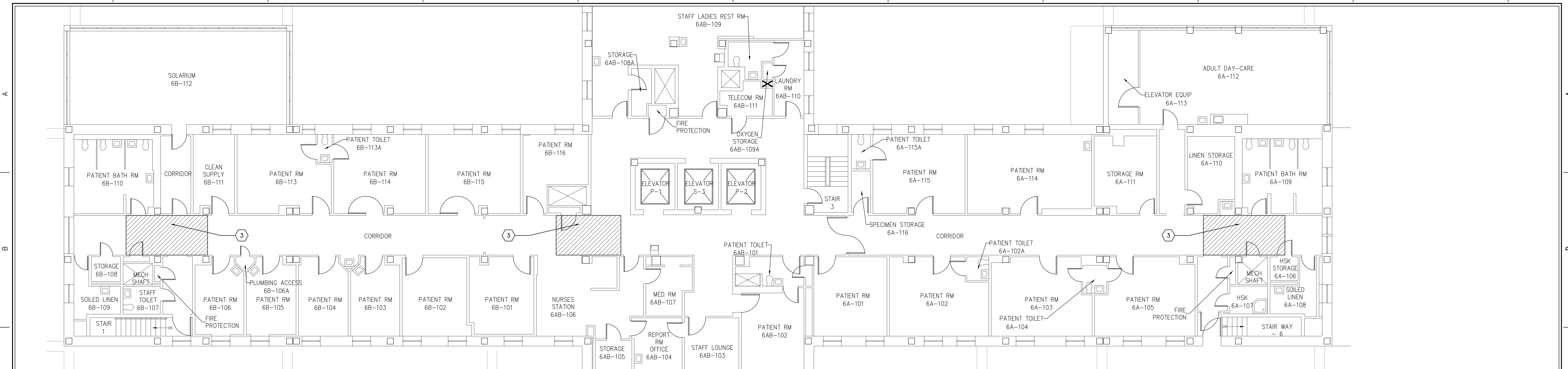
DRAWING TITLE:  
PARTIAL BASEMENT &  
FIRST FLOOR PLANS  
PROJECT TITLE:  
HVAC NEGATIVE AIR CORRECTIONS  
DATE  
7/06/2012  
REV.  
SCALE  
AS NOTED

DRAWING No.  
AS100  
PROJECT No.  
517-11-105  
DRAWN BY:  
CHECKED BY:  
GB

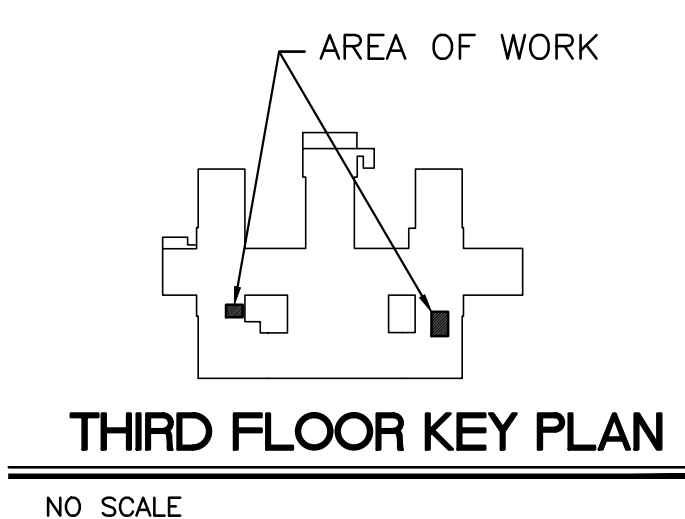
Veterans Affairs  
Medical Center  
200 Veterans Av  
Beckley, WV.  
25801



three inches = one foot  
one and one-half inch = one foot  
one-half inch = one foot  
three-quarters inch = one foot  
one-half inch = one foot  
three-eighths inch = one foot  
one-quarter inch = one foot  
one-eighth inch = one foot



PARTIAL SIXTH FLOOR PLAN  
1/8" = 1'-0"



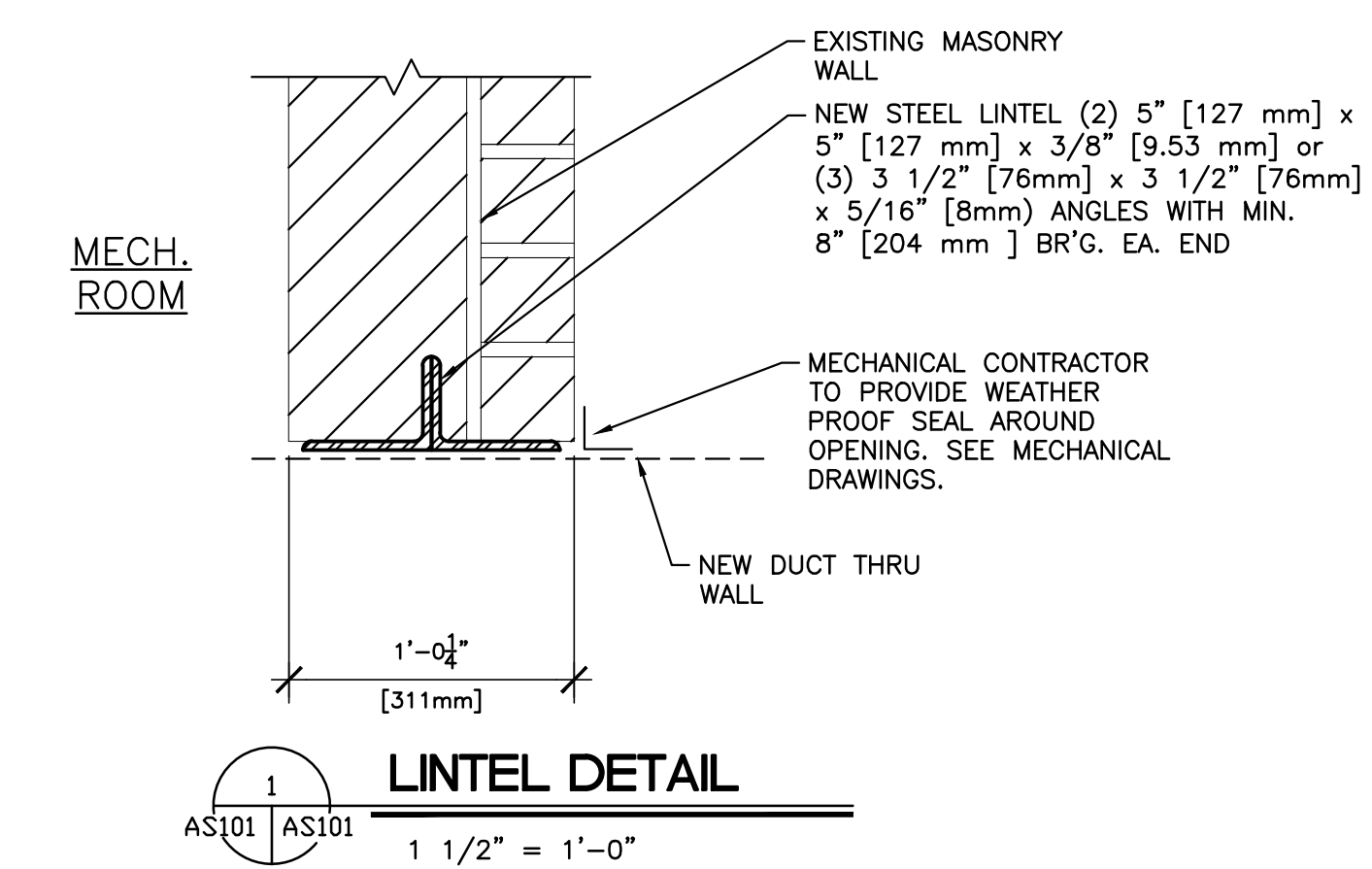
THIRD FLOOR KEY PLAN  
NO SCALE

GENERAL DEMOLITION / CONSTRUCTION NOTES

1. SEE SHEET G1002 FOR ADDITIONAL GENERAL NOTES.
2. COORDINATE ALL DEMOLITION ACTIVITIES WITH COTR.
3. SEE GENERAL DEMOLITION AND CONSTRUCTION NOTES SHEET AS100.

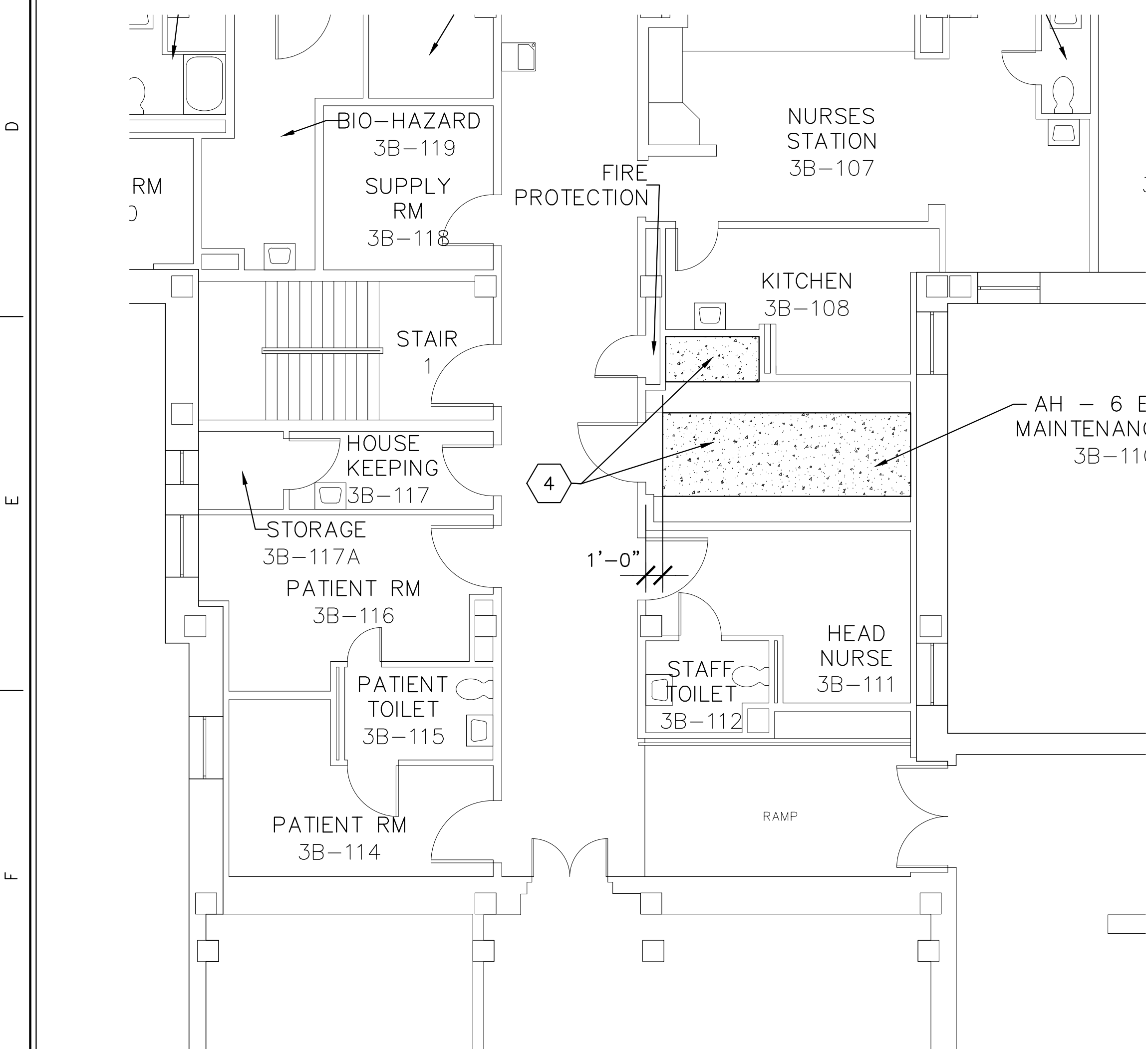
CODED NOTES

- 1 REMOVE EXISTING LAY IN CEILING, AND GRID AS REQUIRED TO DO NEW HVAC WORK. REMOVE AS MUCH CEILING AS REQUIRED. REPLACE THE CEILING WITH NEW TO MATCH EXISTING IN KIND, SIZE, AND PATTERN. REMOVE EXISTING LIGHTS, HVAC DEVICES, ETC. AS REQUIRED. SEE MECHANICAL AND ELECTRICAL DRAWINGS FOR SCOPE OF MEP WORK AND ADDITIONAL INFORMATION.
- 2 CUT OPENING IN EXISTING WALL AS REQUIRED FOR NEW DUCT RUN, COORDINATE WITH HVAC CONTRACTOR THE SIZE AND LOCATION OF DUCT. PROVIDE STEEL ANGLE LINTEL SEE DETAIL 1/AS101. SEE MECHANICAL DRAWINGS.
- 3 REMOVE EXISTING LAY IN CEILING, AND GRID AS REQUIRED TO DO NEW HVAC WORK. REMOVE AS MUCH CEILING AS REQUIRED. REPLACE ANY CEILING WITH NEW TO MATCH EXISTING IN KIND, IF ANY ARE BROKEN. TILES TO MATCH EXISTING. SIZE, AND PATTERN. REMOVE EXISTING LIGHTS, HVAC DEVICES, ETC. AS REQUIRED. SEE MECHANICAL AND ELECTRICAL DRAWINGS FOR ADDITIONAL INFORMATION. REWORK CEILING GRID LAYOUT TO ALLOW INSTALLATION OF NEW SUPPLY AIR GRILLE OR EXHAUST GRILLE. VARY THE TILE SIZE TO ALLOW NEW DUFFERS TO BE INSTALLED IN EXISTING GRID LAYOUT. PROVIDE NEW TILES FOR TILE SIZE CHANGES IF REQUIRED. REVIEW NEW LAYOUT WITH COTR PRIOR TO INSTALLATION.
- 4 POUR NEW CONCRETE HOUSEKEEPING PAD IN MECHANICAL ROOM TO MATCH HEIGHT OF EXISTING MECHANICAL CURBS APPROX. HEIGHT 6"(VERIFY IN FIELD). INFILL TO COVER EXISTING STRUCTURAL TILE LINE.

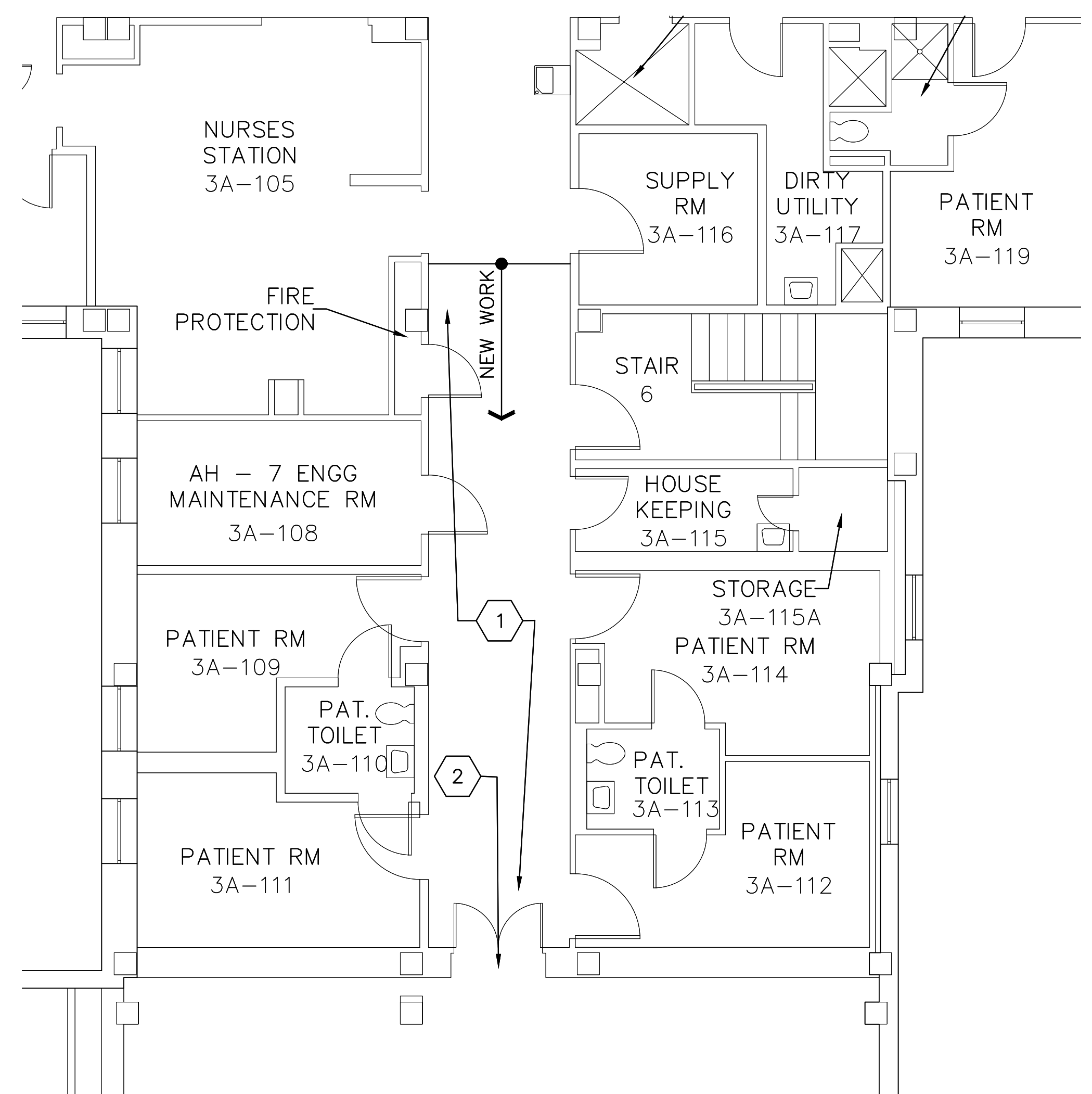


LEGEND

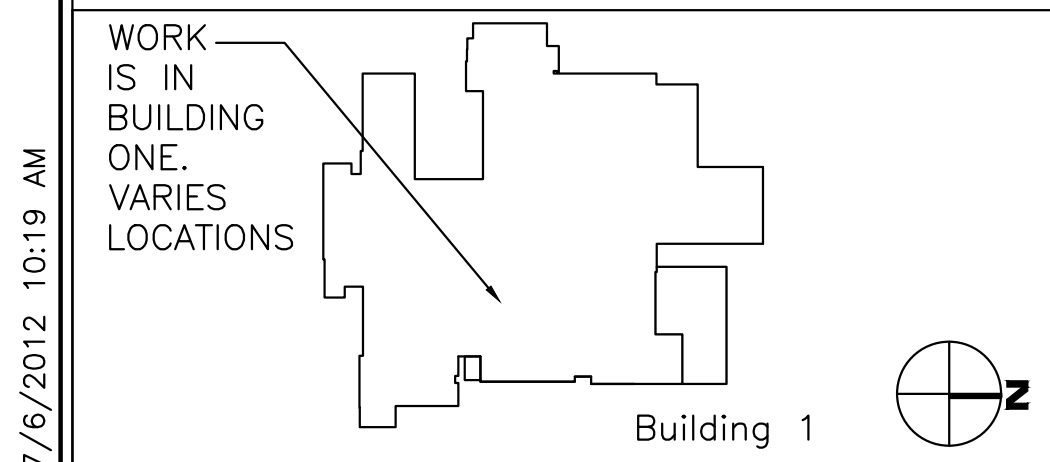
- EXISTING WALLS, DOORS, AND FIXTURES TO REMAIN
- EXISTING WALLS, DOORS, AND FIXTURES TO BE REMOVED



PARTIAL THIRD FLOOR PLAN  
1/8" = 1'-0"



PARTIAL THIRD FLOOR PLAN  
1/8" = 1'-0"



**CDL**  
Collaborative Design, Ltd.  
2727 Tuller Parkway, Suite 200  
Dublin, Ohio 43017  
Tel 614.798.1515  
Project Number: 11025

APPROVED: SAFETY MANAGER  
JUSTIN GREENE  
APPROVED: INFECTION CONTROL  
SHAWN M. MILLS  
APPROVED:

APPROVED: CHIEF, FACILITIES MANAGEMENT SERVICE LINE  
CLAYTON HELMS, CHFM  
APPROVED: ASSOCIATE DIRECTOR for PATIENT CARE  
SERVICES/EXECUTIVE NURSE  
DEBRA LEGG, RN, MSN  
APPROVED: SERVICE LINE CHIEF

APPROVED: MEDICAL CENTER DIRECTOR  
KARIN L. McGRAW, MSN, FACHE  
APPROVED: ASSOCIATE DIRECTOR  
J. BRIAN NIMMO, MS  
APPROVED: CHIEF OF STAFF  
JOHN D. BERRYMAN, M. D.

DRAWING TITLE:  
PARTIAL THIRD & SIXTH  
FLOOR PLANS  
PROJECT TITLE:  
HVAC NEGATIVE AIR CORRECTIONS  
DATE  
7/06/2012  
REV.  
SCALE  
AS NOTED

DRAWING No.  
AS101  
PROJECT No.  
517-11-105  
DRAWN BY:  
CHECKED BY:

Veterans Affairs  
Medical Center  
200 Veterans Av  
Beckley, WV.  
25801

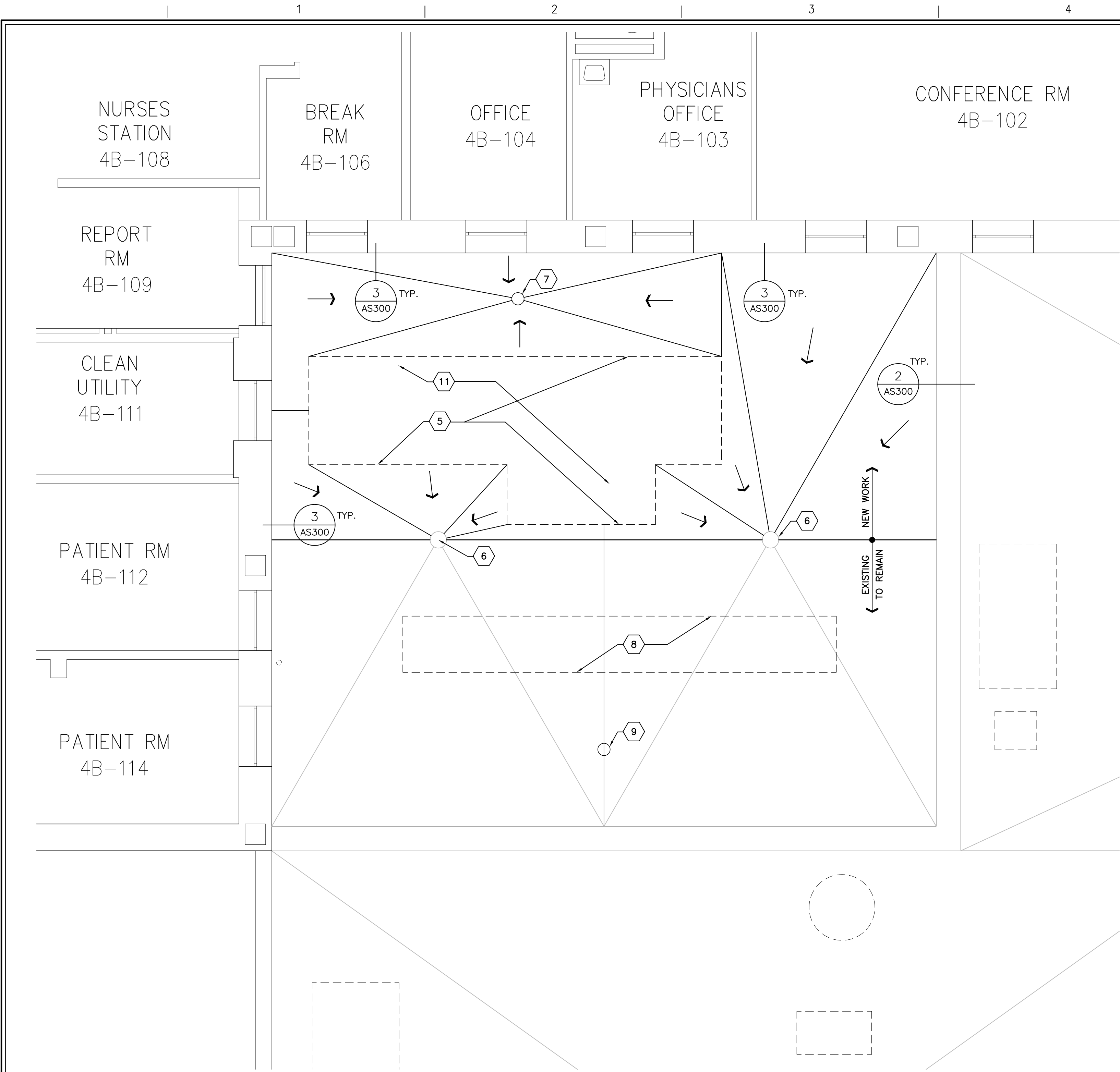






one-eighth inch = one foot  
one-quarter inch = one foot  
three-eighths inch = one foot  
one-half inch = one foot  
three-quarters inch = one foot  
one and one-half inch = one foot  
two inches = one foot  
three inches = one foot

A  
B  
C  
D  
E  
F

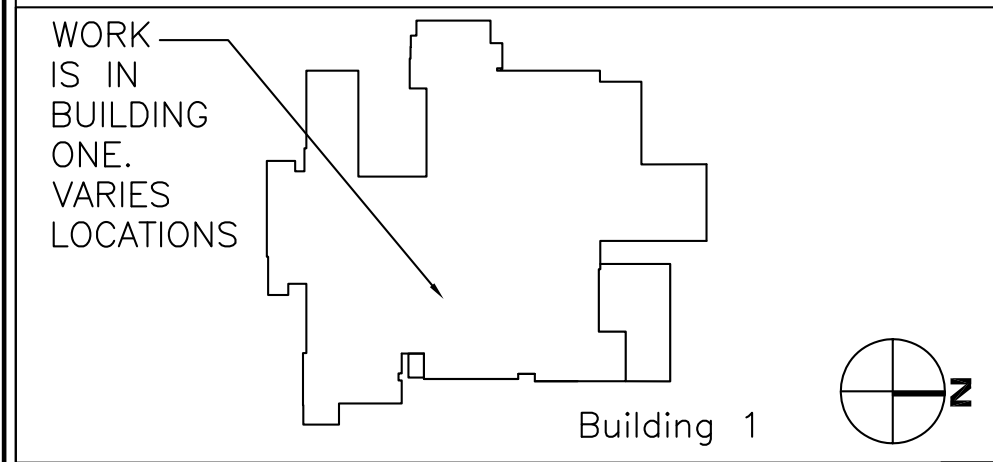


#### FOURTH FLOOR/ROOF PLAN

1/8" = 1'-0"

#### CODED NOTES

- NEW MECHANICAL SCREENING SUPPORTS, SEE ELEVATIONS & DETAILS ON SHEET AS200.
  - NEW ROOF SYSTEM.
  - NEW STRUCTURAL BEAMS ON ROOF. SEE STRUCTURAL SHEET. BEAMS ARE TO BE INSTALLED PRIOR TO CUTTING OF NEW DUCT OPENING. SEE DETAIL 12/AS300.
  - NEW STRUCTURAL PLATFORM ON POSTS OVER EXISTING COLUMNS. SEE STRUCTURAL SHEET. ROOF AND FLASH AROUND POSTS SIMILAR TO DETAILS 4/AS200.
  - NEW MECHANICAL UNIT CURB, FILL CURB WITH RIGID INSULATION TO MIN. 16", COORDINATE WITH MECHANICAL UNIT UTILITIES. CONTRACTOR TO PROVIDE ROOF FLASHING ON AND AROUND NEW HVAC UNIT CURB AS REQUIRED. SEE DETAIL 8/AS300. SEE MECHANICAL DRAWINGS.
  - EXISTING ROOF DRAINS.
  - NEW ROOF DRAINS. SEE DETAIL 1/AS300 AND MECHANICAL DRAWINGS.
  - FUTURE HVAC UNIT, TO BE INSTALLED IN ANCILLARY CARE PROJECT PROJECT NO. 517-11-316
  - NEW ROOF DRAIN FOR FUTURE WORK, SEE DETAIL 1/AS300. SEE DEDUCT ALTERNATES.
  - NEW LOCATION OF EXISTING CONDENSING UNIT ON EQUIPMENT RAILS. SEE DETAILS 9/AS300.
  - RAISE MECHANICAL SCREENING AT HOOD.
- (11) AFTER INSTALLATION OF BAR JOIST REINFORCING AS SHOWN ON SHEET SF101. REFIREPROOF EXISTING BAR JOISTS WHERE FIREPROOFING REMOVED FOR INSTALLATION AND NEW FIRE PROOFING ON NEW REINFORCING TO MATCH EXISTING RATING OF 2 HRS.



**CDL**  
Collaborative Design, Ltd.  
2727 Tuller Parkway, Suite 200  
Dublin, Ohio 43017  
Tel 614.798.1515  
Project Number: 11025

APPROVED: SAFETY MANAGER  
JUSTIN GREENE  
APPROVED: INFECTION CONTROL  
SHAWN M. MILLS  
APPROVED:

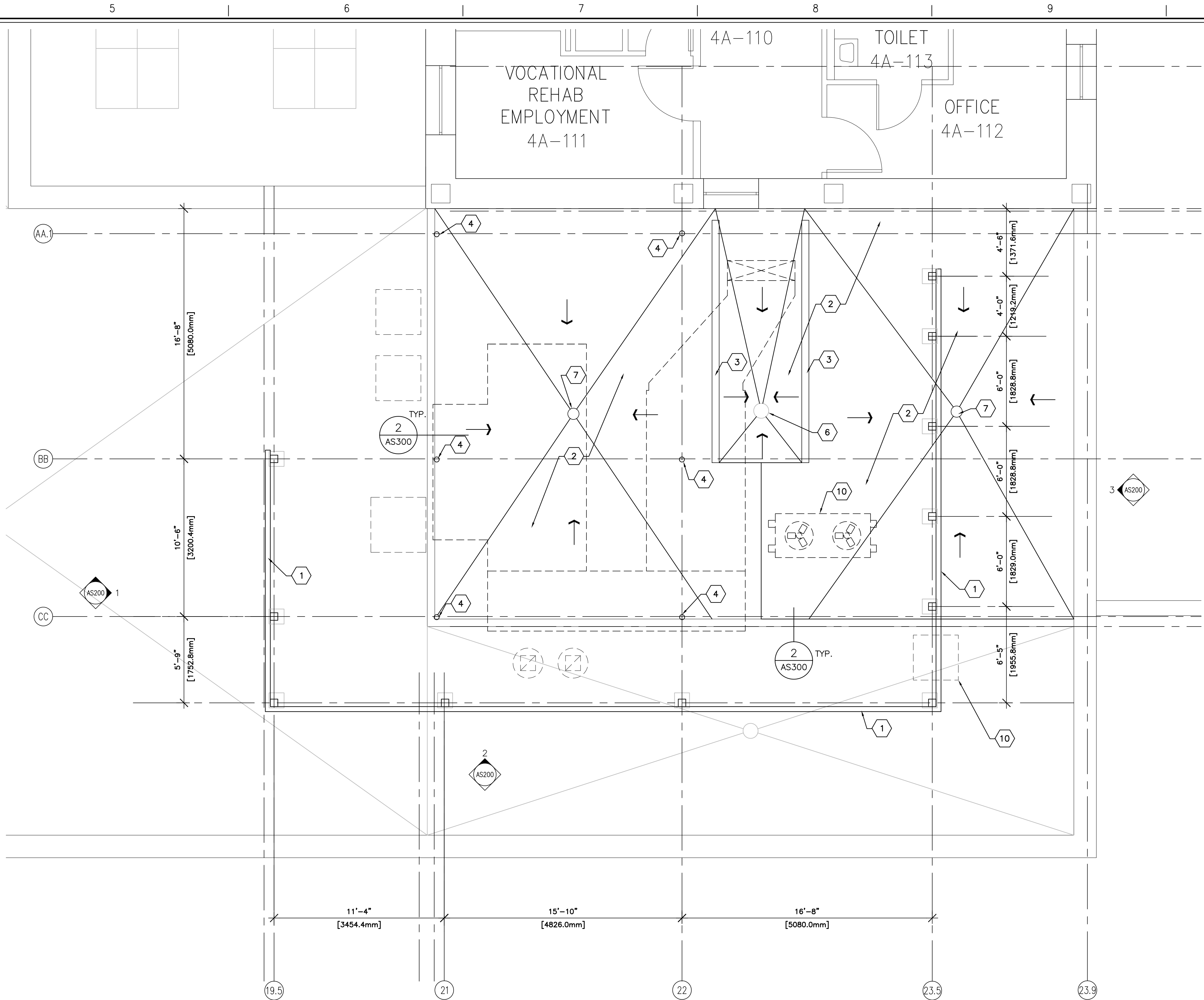
APPROVED: CHIEF, FACILITIES MANAGEMENT SERVICE LINE  
CLAYTON HELMS, CHFM  
APPROVED: ASSOCIATE DIRECTOR for PATIENT CARE SERVICES/EXECUTIVE NURSE  
DEBRA LEGG, RN, MSN  
APPROVED: SERVICE LINE CHIEF

APPROVED: MEDICAL CENTER DIRECTOR  
KARIN L. McGRAW, MSN, FACHE  
APPROVED: ASSOCIATE DIRECTOR  
J. BRIAN NIMMO, MS  
APPROVED: CHIEF OF STAFF  
JOHN D. BERRYMAN, M. D.

DRAWING TITLE:  
PARTIAL FOURTH FLOOR/  
ROOF PLANS NEW WORK  
PROJECT TITLE:  
HVAC NEGATIVE AIR CORRECTIONS  
DATE  
7/06/2012  
REV.  
SCALE  
AS NOTED

DRAWING No.  
AS103  
PROJECT No.  
517-11-105  
DRAWN BY:  
CHECKED BY:

Veterans Affairs  
Medical Center  
200 Veterans Av  
Beckley, WV.  
25801

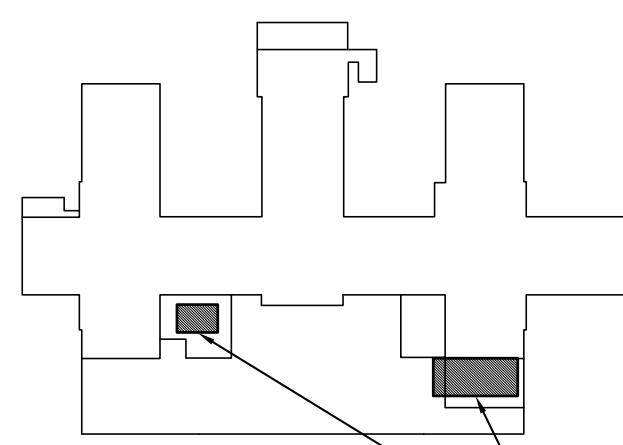


#### FOURTH FLOOR/ROOF PLAN

1/8" = 1'-0"

#### GENERAL ROOF NOTES

- SEE SHEET G1001, AND G1002 FOR ADDITIONAL GENERAL NOTES.
- ALL DIMENSIONS ARE TO BE FIELD VERIFIED PRIOR TO CONSTRUCTION.
- ROOF SLOPE TO BE 1/4" PER FOOT TYPICAL, OR MATCH EXISTING ROOF SLOPE OF ROOF REMOVED, UNLESS NOTED OTHERWISE.
- CONTRACTOR TO CLEAN ALL ROOF DRAINS IN PROJECT SCOPE. DEMONSTRATE TO THE COTR THAT THEY ARE OPERATIONAL PRIOR TO PROJECT COMPLETION.
- SEE SHEET AS300 FOR TYPICAL ROOF DETAILS FOR VARIES CONDITIONS. NOT ALL CONDITIONS ARE INDICATED. CONTRACTOR TO USE MANUFACTURER STANDARD DETAILS.
- CONTRACTOR TO PROVIDE FLASHING ON AND AROUND ALL PENETRATIONS.
- CONTRACTOR TO INSURE POSITIVE DRAINAGE TO ROOF DRAINS IS MAINTAINED AROUND ALL EQUIPMENT AND PENETRATIONS, ETC.

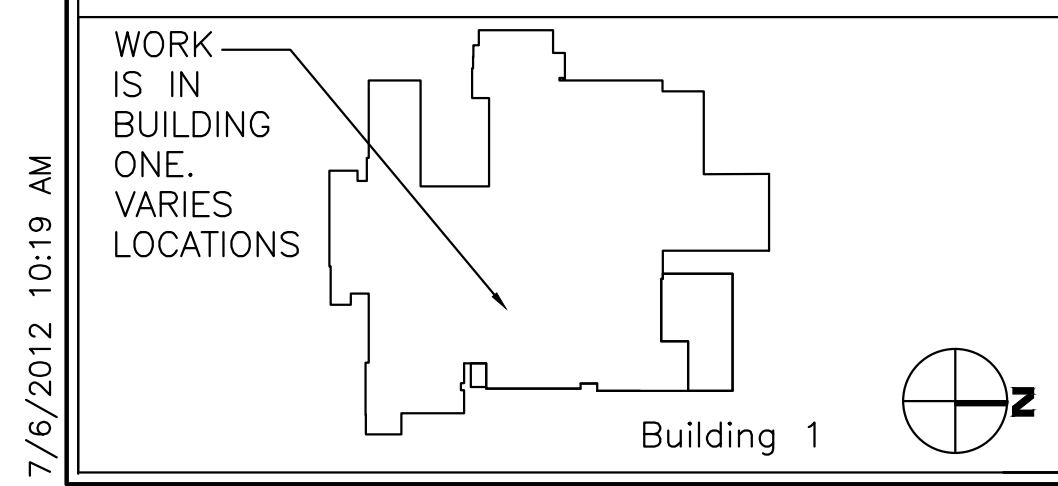
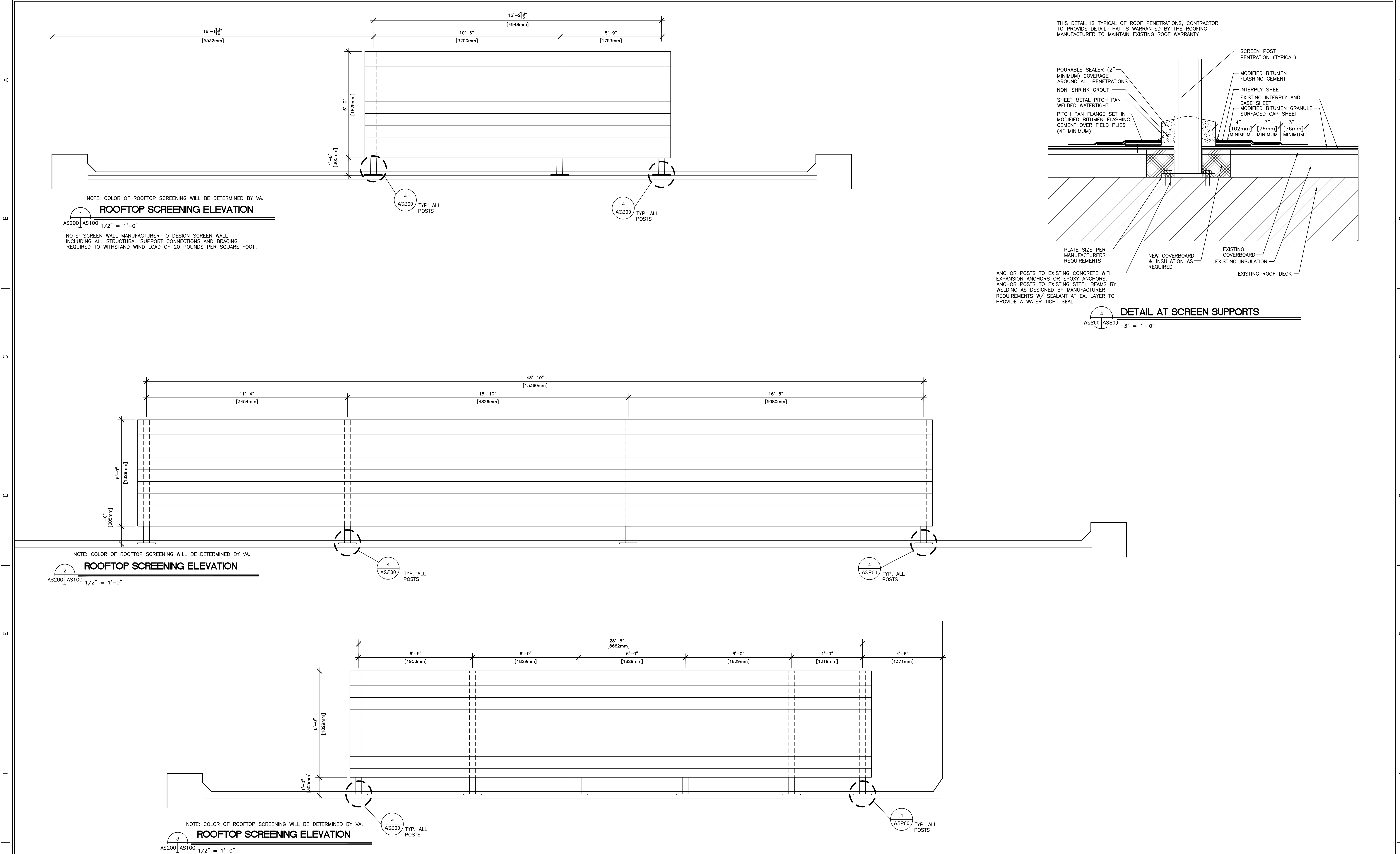


AREA'S OF WORK

#### FOURTH FLOOR/ROOF KEY PLAN

NO SCALE

one-eighth inch = one foot  
one-quarter inch = one foot  
three-eighths inch = one foot  
one-half inch = one foot  
three-quarters inch = one foot  
one-half inch = one foot  
one and one-half inch = one foot  
three inches = one foot



**CDL**  
Collaborative Design, Ltd.  
2727 Tuller Parkway, Suite 200  
Dublin, Ohio 43017  
Tel 614.798.1515  
Project Number: 11025

APPROVED: SAFETY MANAGER  
JUSTIN GREENE  
APPROVED: INFECTION CONTROL  
SHAWN M. MILLS  
APPROVED:

APPROVED: CHIEF, FACILITIES MANAGEMENT SERVICE LINE  
CLAYTON HELMS, CHFM  
APPROVED: ASSOCIATE DIRECTOR for PATIENT CARE SERVICES/EXECUTIVE NURSE  
DEBRA LEGG, RN, MSN  
APPROVED: SERVICE LINE CHIEF

APPROVED: MEDICAL CENTER DIRECTOR  
KARIN L. McGRAW, MSN, FACHE  
APPROVED: ASSOCIATE DIRECTOR  
J. BRIAN NIMMO, MS  
APPROVED: CHIEF OF STAFF  
JOHN D. BERRYMAN, M. D.

DRAWING TITLE:  
EXTERIOR ELEVATIONS AND DETAILS  
PROJECT TITLE:  
HVAC NEGATIVE AIR CORRECTIONS  
DATE  
7/06/2012  
REV.  
SCALE  
AS NOTED

DRAWING No.  
AS200  
PROJECT No.  
517-11-105  
DRAWN BY:  
CHECKED BY:

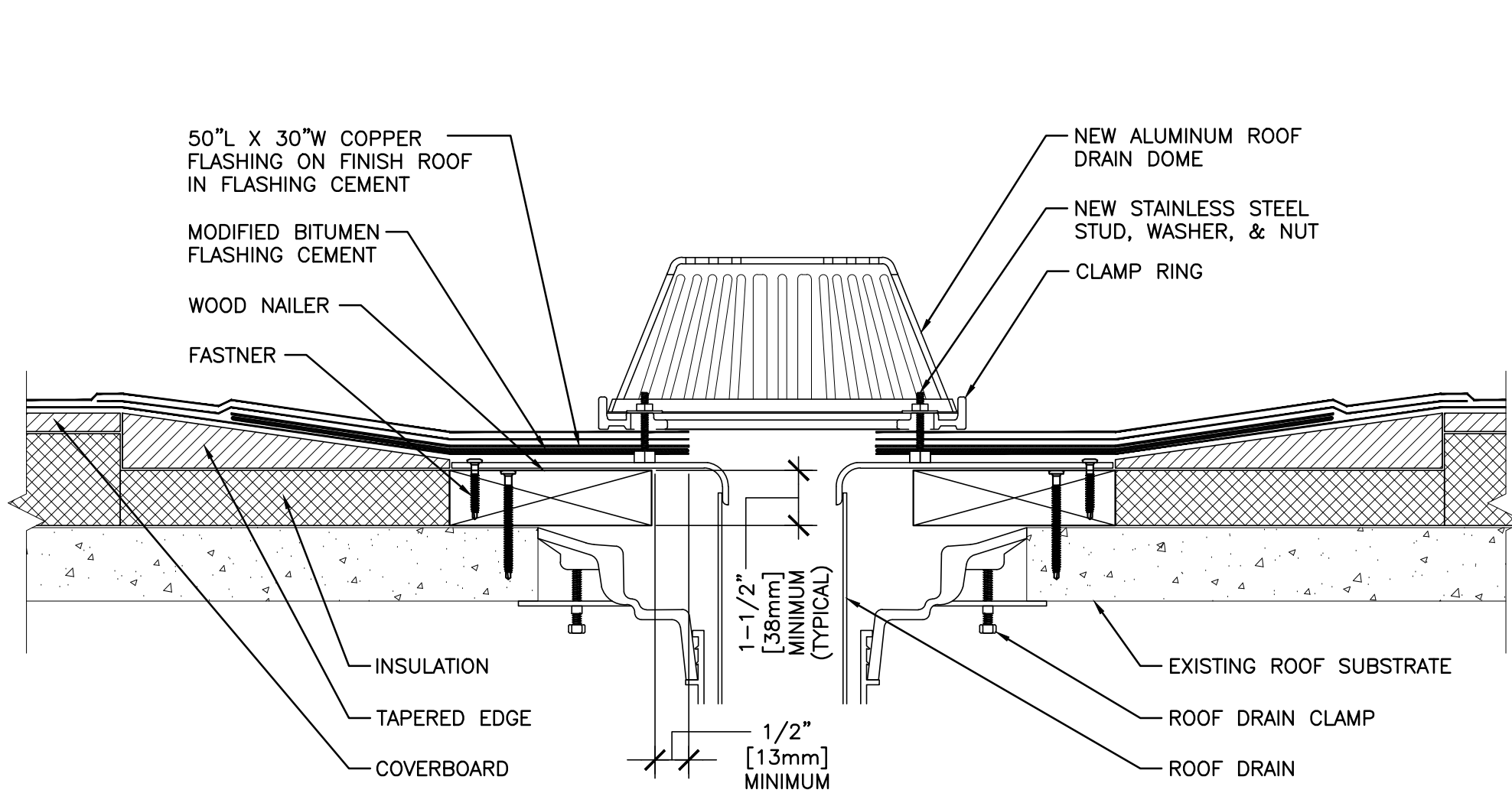
Veterans Affairs  
Medical Center  
200 Veterans Av  
Beckley, WV.  
25801



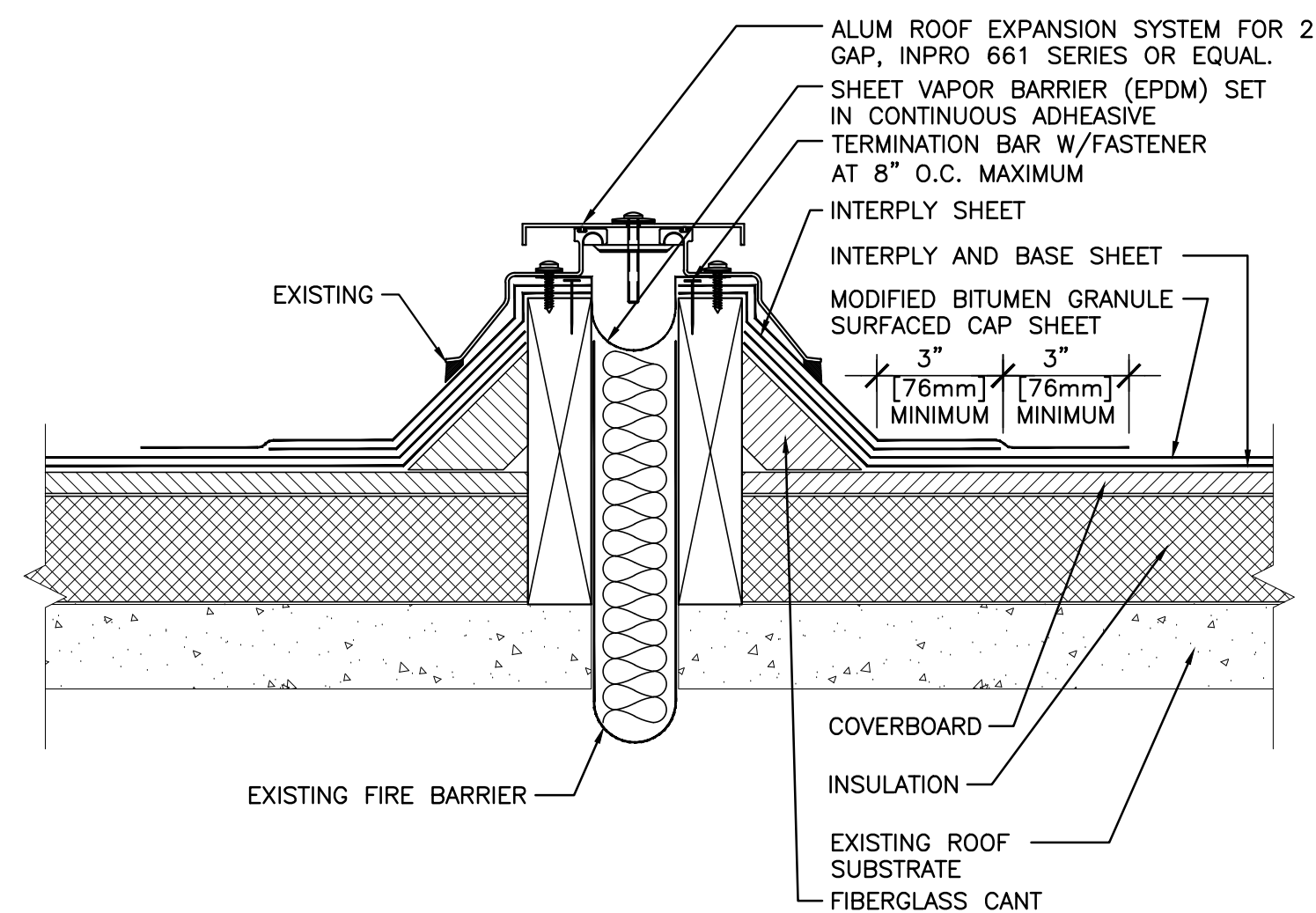


three inches = one foot  
one and one-half inch = one foot  
one-half inch = one foot  
three-quarters inch = one foot  
one-half inch = one foot  
three-eighths inch = one foot  
one-quarter inch = one foot  
one-eighth inch = one foot

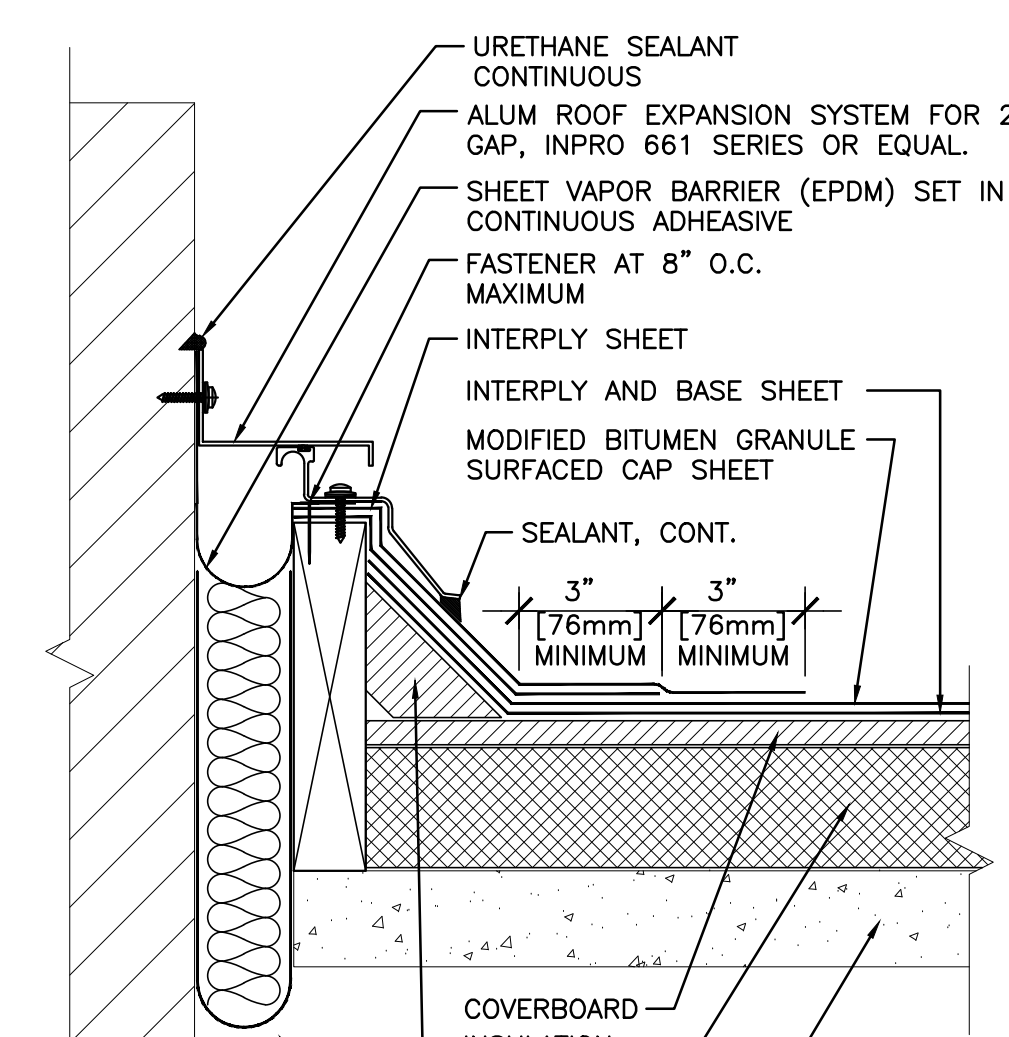
A  
B  
C  
D  
E  
F



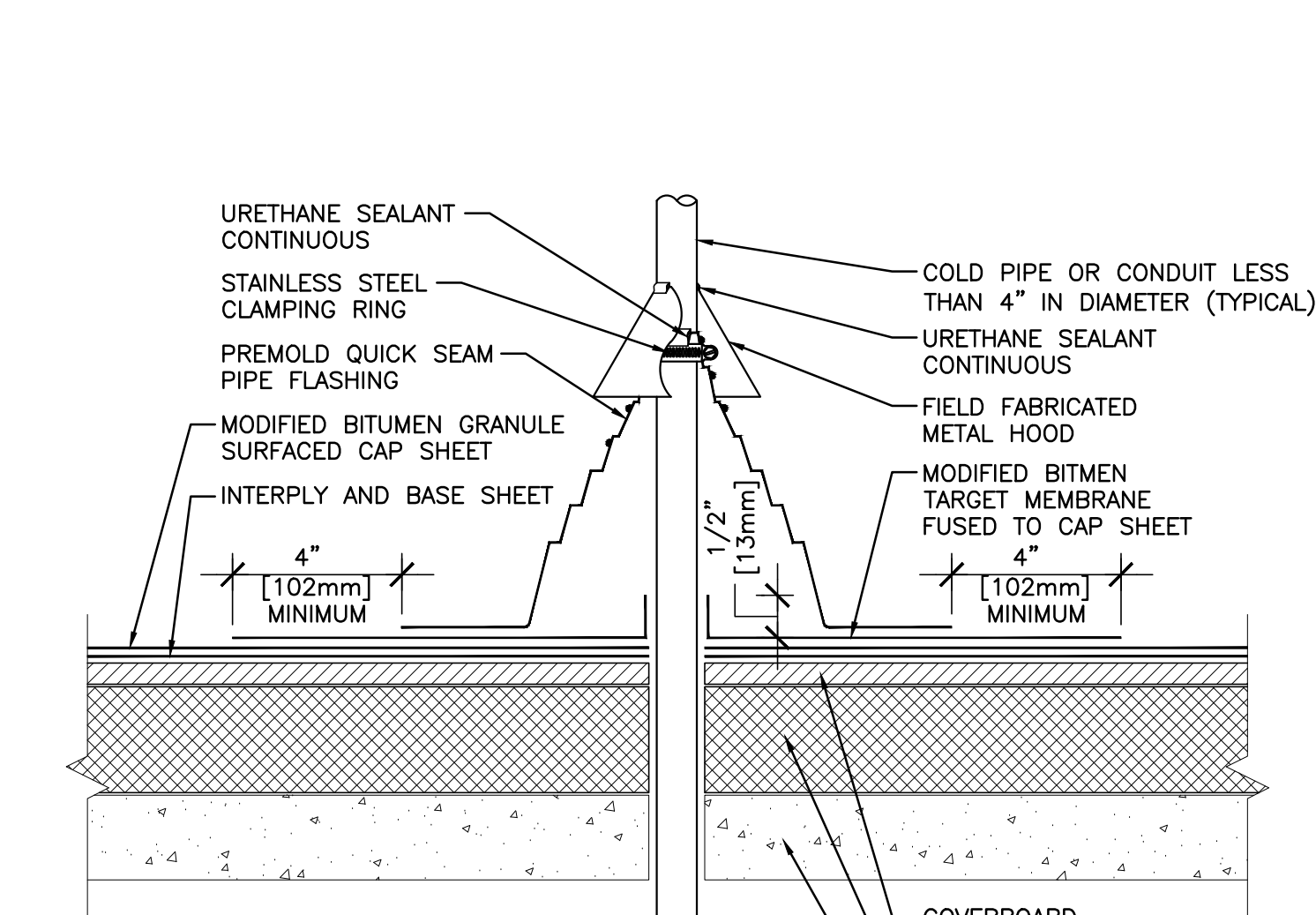
1 ROOF DETAIL  
AS103 AS300 3" = 1'-0"



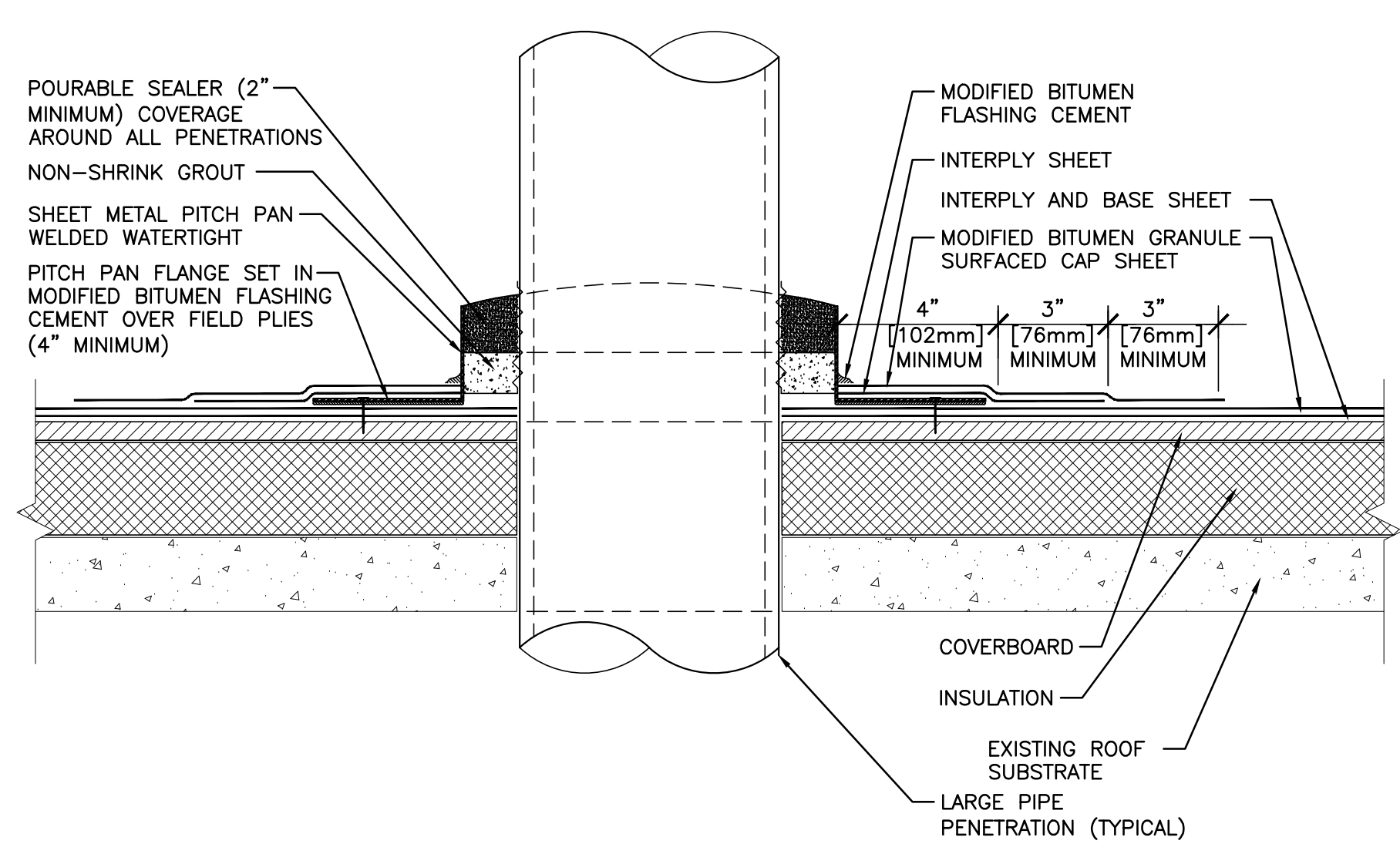
2 ROOF DETAIL  
AS103 AS300 3" = 1'-0"



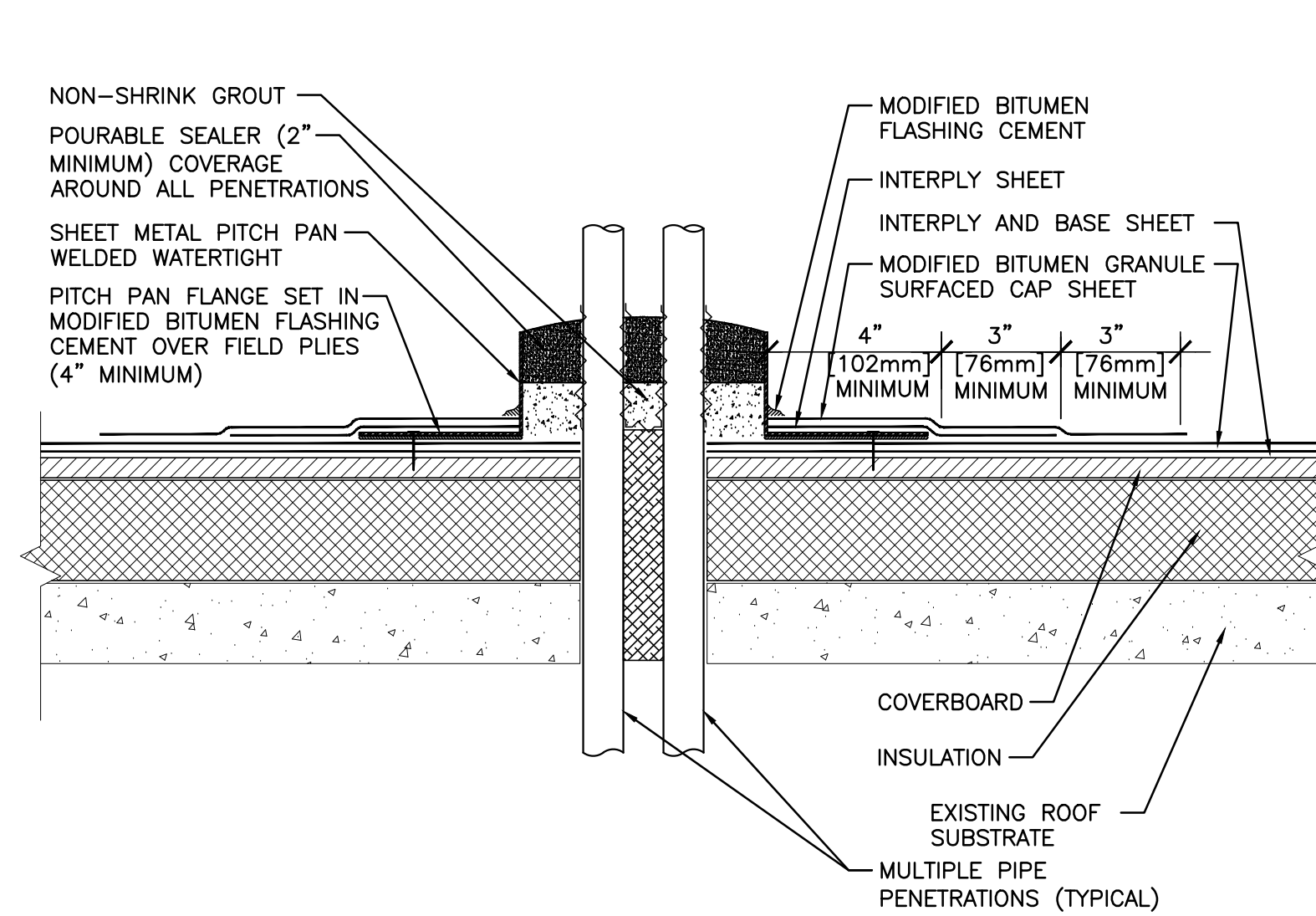
3 ROOF DETAIL  
AS103 AS300 3" = 1'-0"



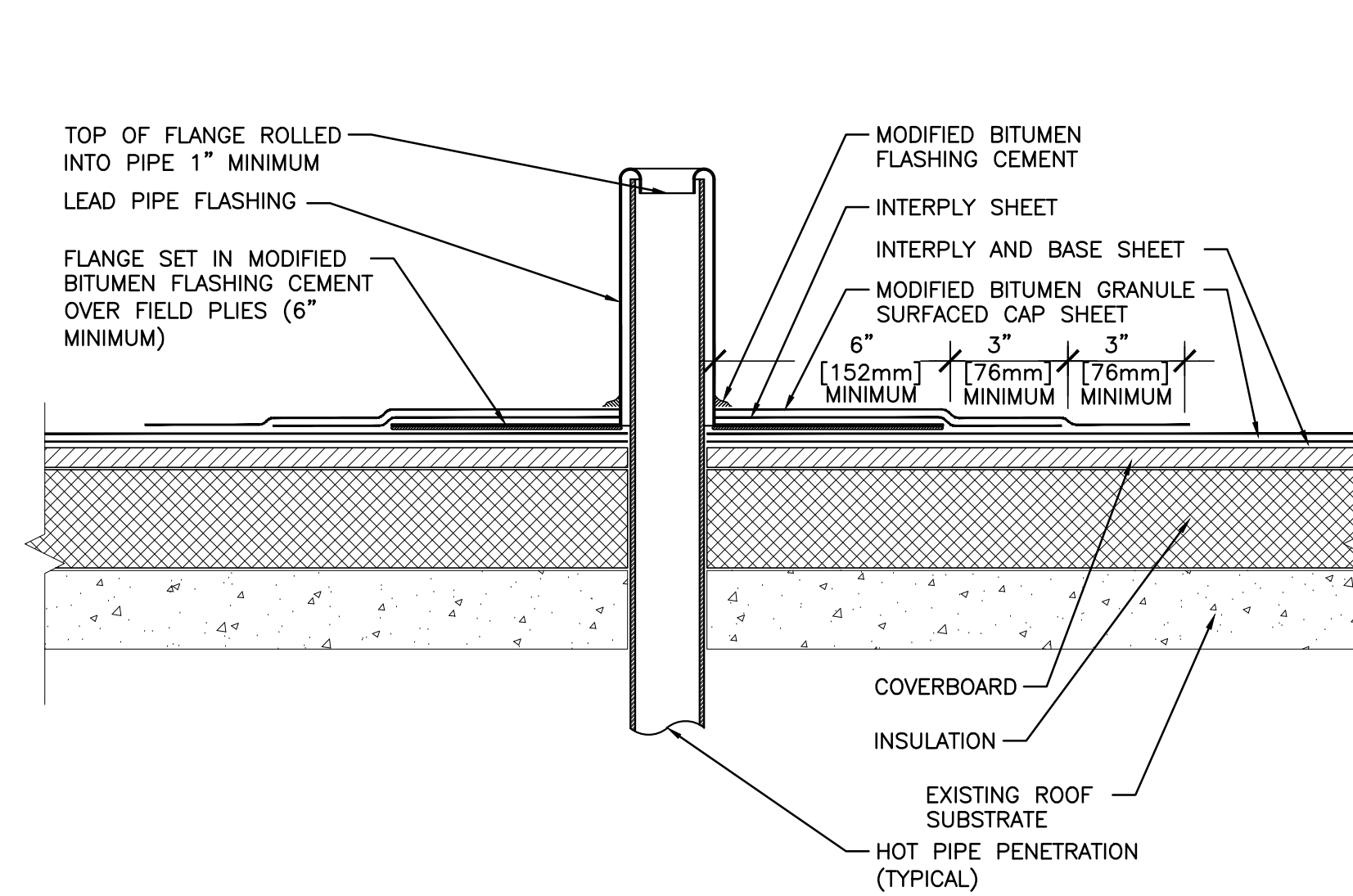
4 TYPICAL ROOF DETAIL  
AS103 AS300 3" = 1'-0"



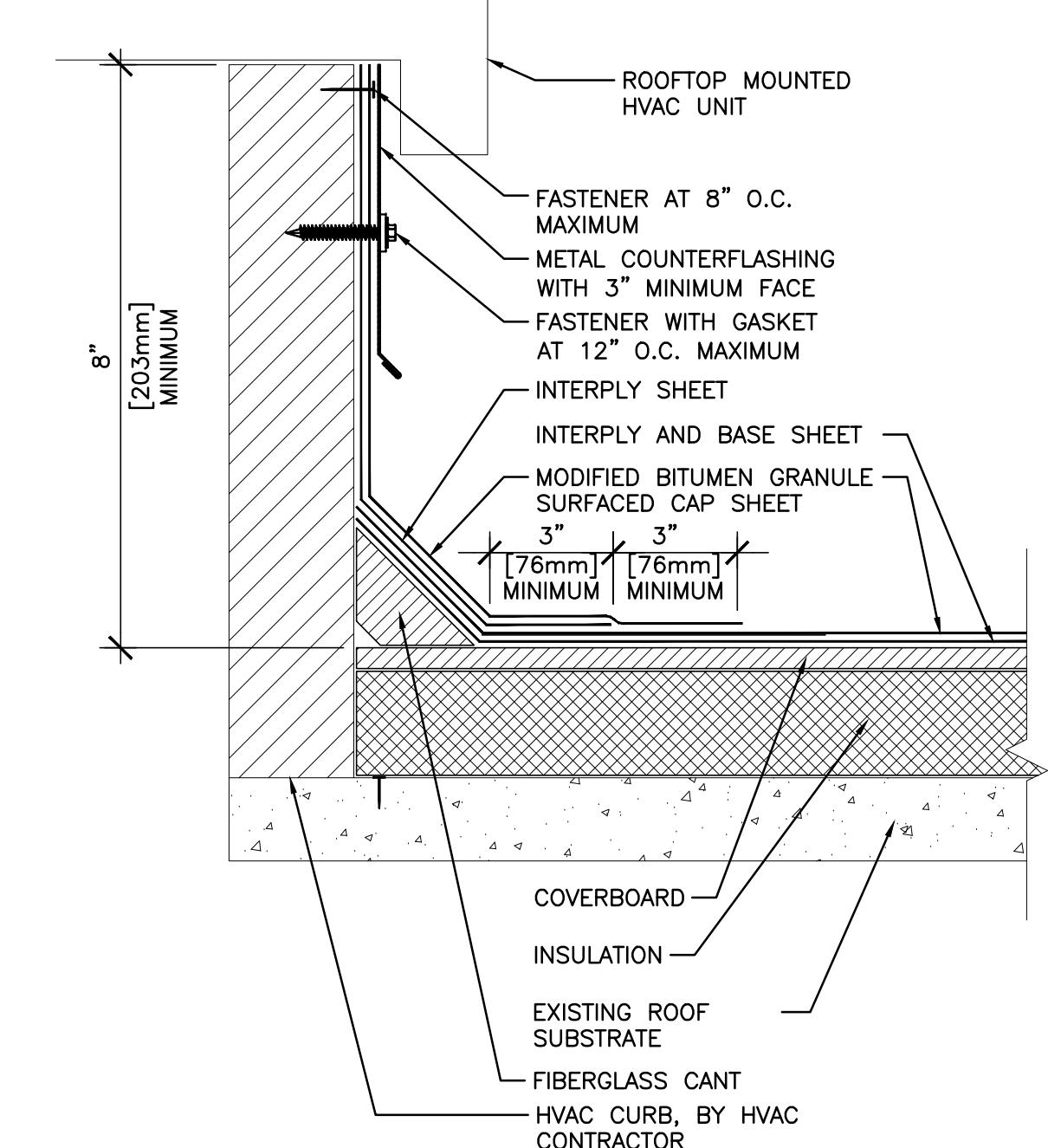
5 TYPICAL ROOF DETAIL  
AS103 AS300 3" = 1'-0"



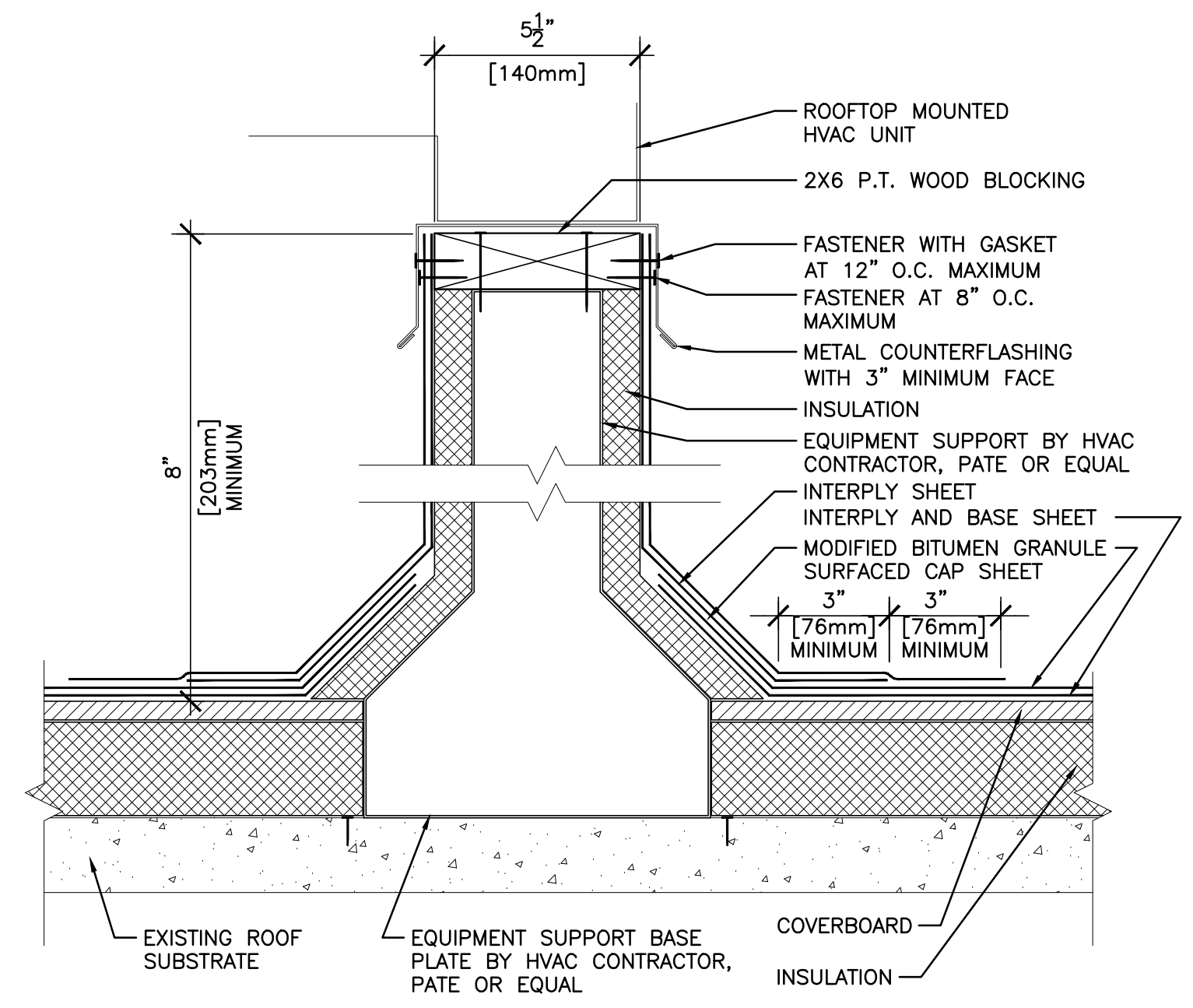
6 TYPICAL ROOF DETAIL  
AS103 AS300 3" = 1'-0"



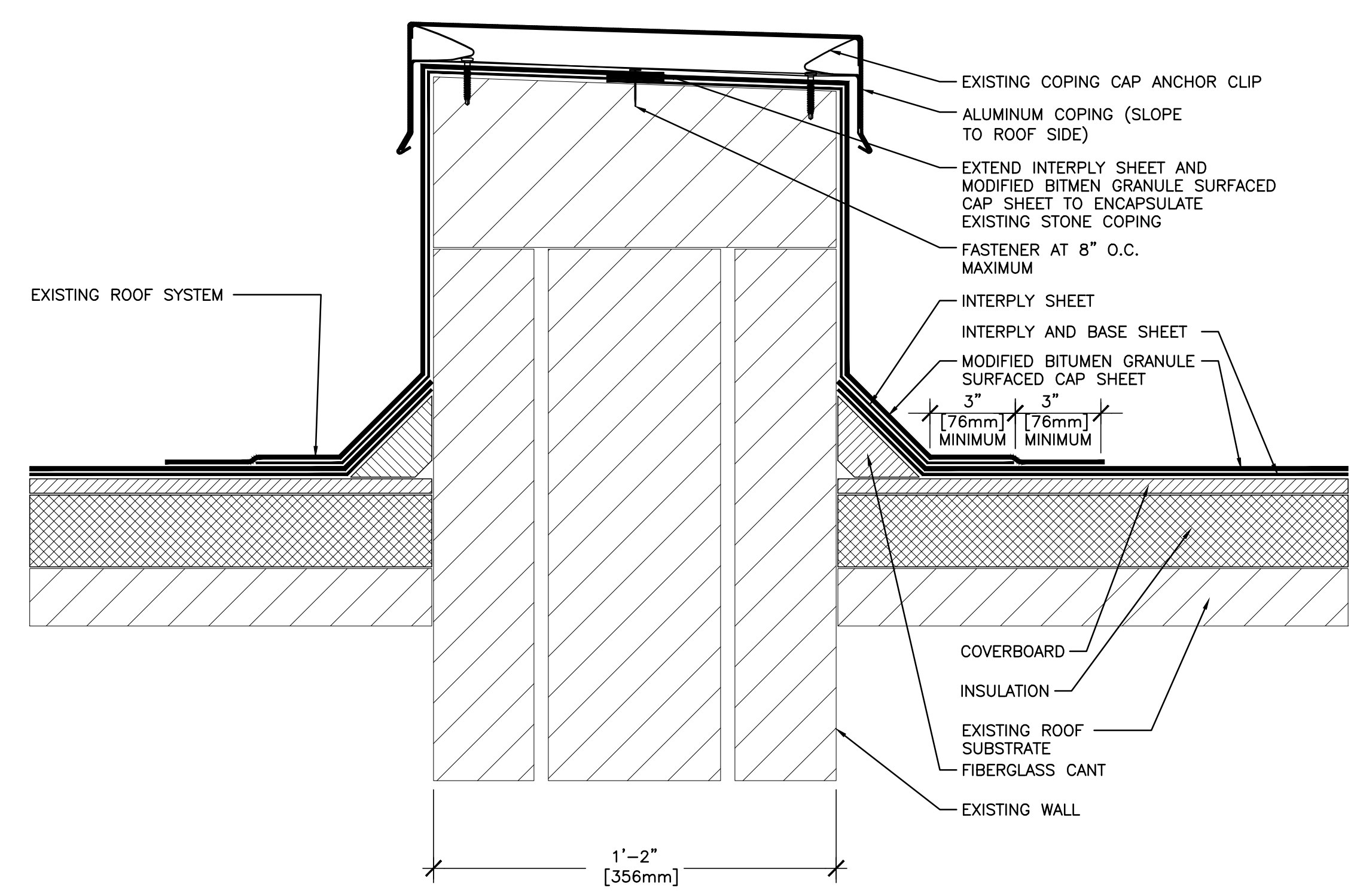
7 TYPICAL ROOF DETAIL  
AS103 AS300 3" = 1'-0"



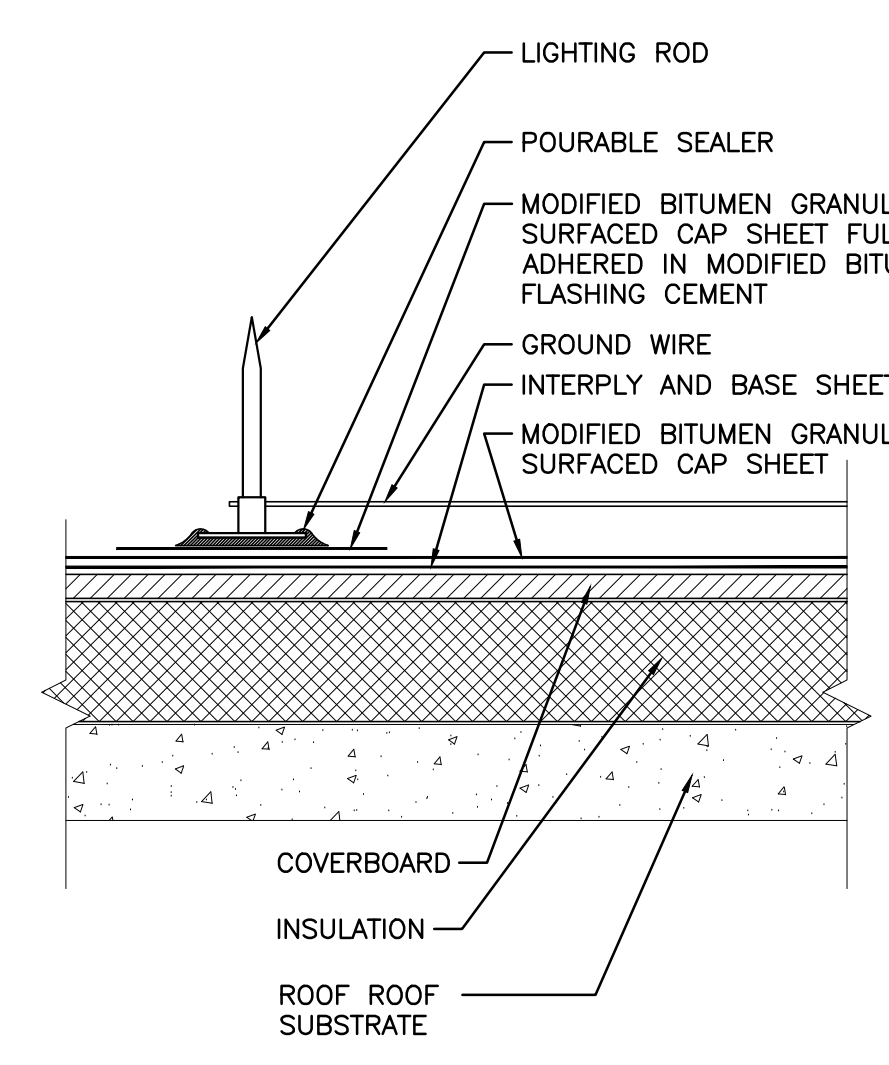
8 TYPICAL ROOF CURB DETAIL  
AS103 AS300 3" = 1'-0"



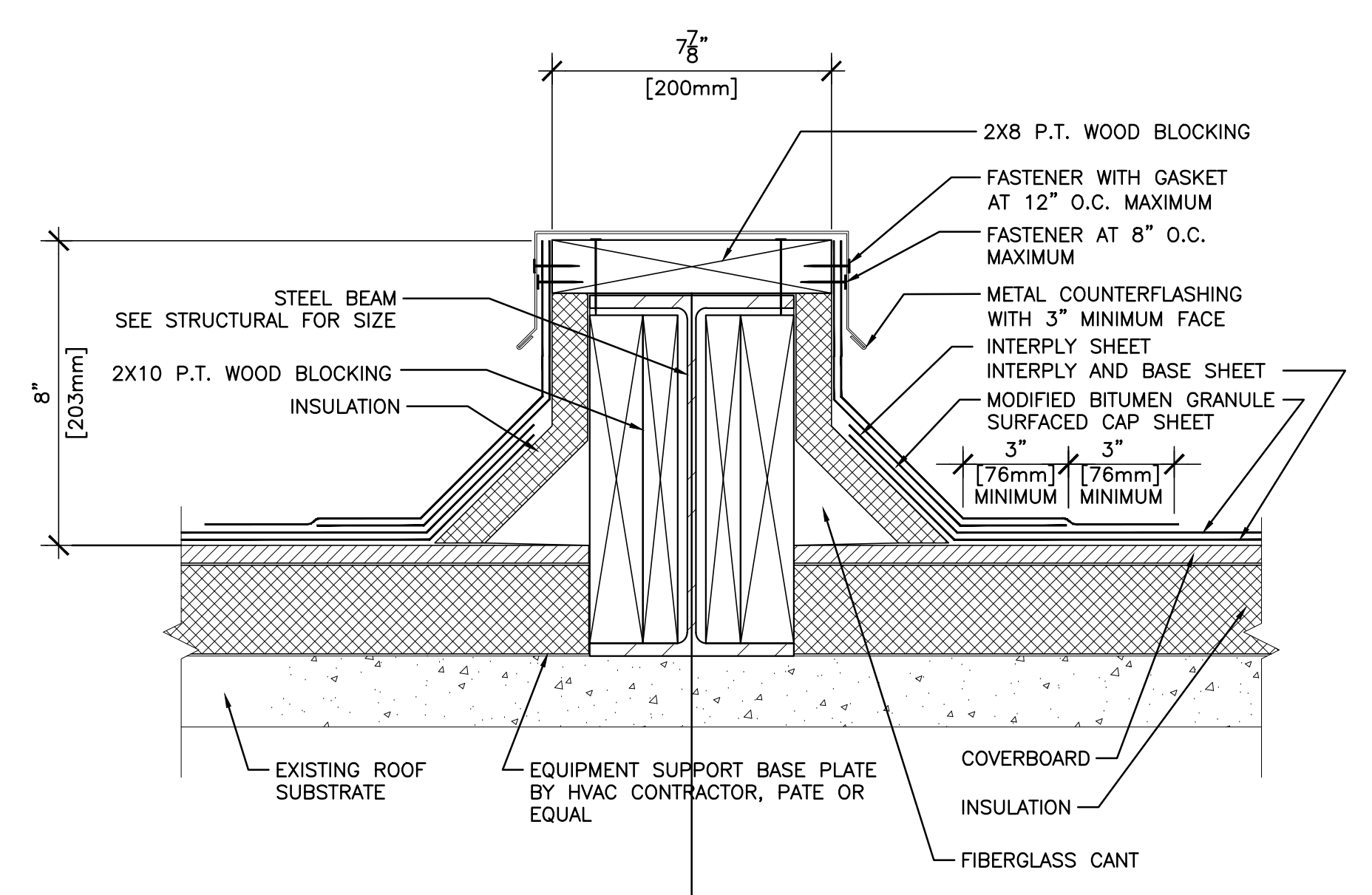
9 TYPICAL ROOF RAIL DETAIL  
AS103 AS300 3" = 1'-0"



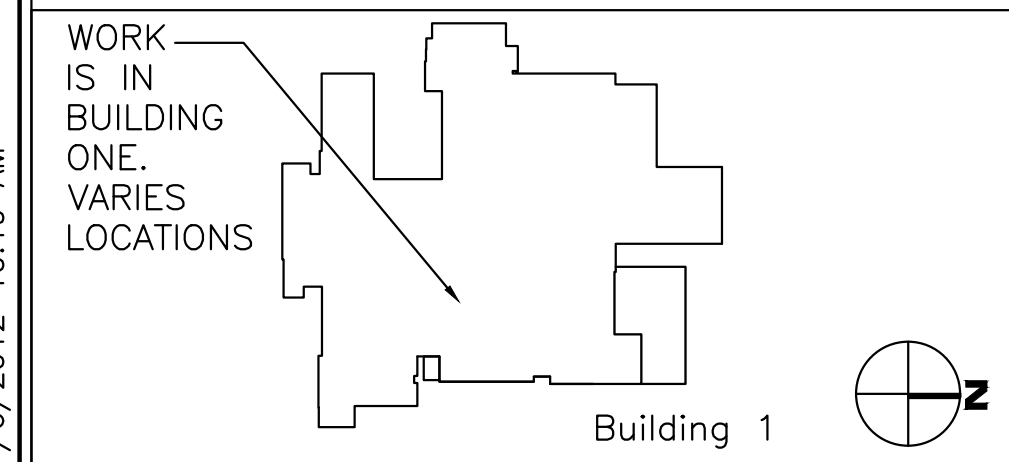
10 TYPICAL ROOF DETAIL  
AS103 AS300 3" = 1'-0"



11 TYPICAL ROOF DETAIL  
AS103 AS300 3" = 1'-0"



12 ROOF DETAIL  
AS103 AS300 3" = 1'-0"



**CDL**  
Collaborative Design, Ltd.  
2727 Tuller Parkway, Suite 200  
Dublin, Ohio 43017  
Tel 614.798.1515  
Project Number: 11025

APPROVED: SAFETY MANAGER  
JUSTIN GREENE  
APPROVED: INFECTION CONTROL  
SHAWN M. MILLS  
APPROVED:

APPROVED: CHIEF, FACILITIES MANAGEMENT SERVICE LINE  
CLAYTON HELMS, CHFM  
APPROVED: ASSOCIATE DIRECTOR for PATIENT CARE  
SERVICES/EXECUTIVE NURSE  
DEBRA LEGG, RN, MSN  
APPROVED: SERVICE LINE CHIEF

APPROVED: MEDICAL CENTER DIRECTOR  
KARIN L. McGRAW, MSN, FACHE  
APPROVED: ASSOCIATE DIRECTOR  
J. BRIAN NIMMO, MS  
APPROVED: CHIEF OF STAFF  
JOHN D. BERRYMAN, M. D.

DRAWING TITLE:  
ROOF DETAILS  
PROJECT TITLE:  
HVAC NEGATIVE AIR CORRECTIONS  
DATE  
7/06/2012  
REV.  
SCALE  
AS NOTED

DRAWING No.  
AS300  
PROJECT No.  
517-11-105  
DRAWN BY:  
CHECKED BY:  
GB

Veterans Affairs  
Medical Center  
200 Veterans Av  
Beckley, WV.  
25801



7/6/2012 10:19 AM

