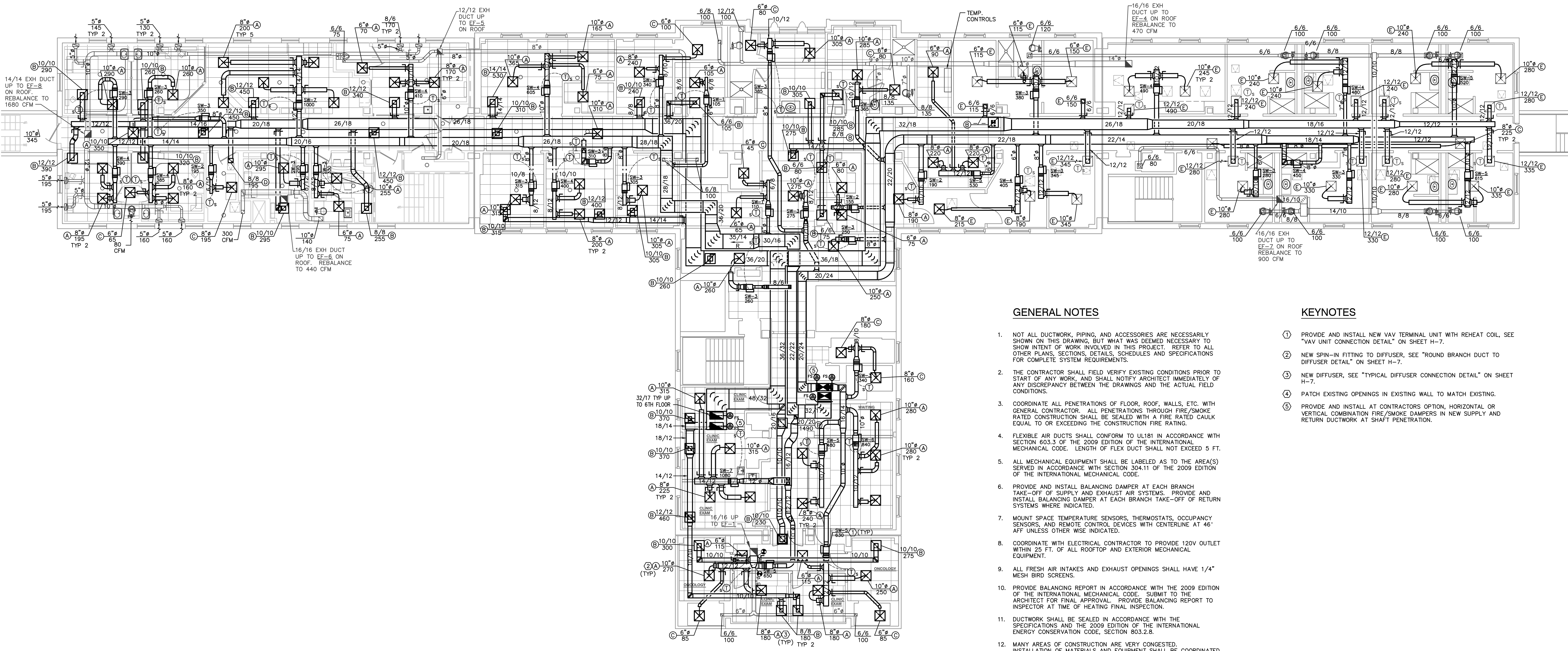


three inches = one foot
one and one-half inch = one foot
one inch = one foot
three-quarters inch = one foot
one-half inch = one foot
one-quarter inch = one foot
three-eighths inch = one foot
one-eighth inch = one foot



MECHANICAL FIFTH FLOOR DEMOLITION PLAN
SCALE: 1/8" = 1'-0"

GENERAL NOTES

- NOT ALL DUCTWORK, PIPING, AND ACCESSORIES ARE NECESSARILY SHOWN ON THIS DRAWING, BUT WHAT WAS DEEMED NECESSARY TO SHOW INTENT OF WORK INVOLVED IN THIS PROJECT. REFER TO ALL OTHER PLANS, SECTIONS, DETAILS, SCHEDULES AND SPECIFICATIONS FOR COMPLETE SYSTEM REQUIREMENTS.
- THE CONTRACTOR SHALL FIELD VERIFY EXISTING CONDITIONS PRIOR TO START OF ANY WORK, AND SHALL NOTIFY ARCHITECT IMMEDIATELY OF ANY DISCREPANCY BETWEEN THE DRAWINGS AND THE ACTUAL FIELD CONDITIONS.
- COORDINATE ALL PENETRATIONS OF FLOOR, ROOF, WALLS, ETC. WITH GENERAL CONTRACTOR. ALL PENETRATIONS THROUGH FIRE/SMOKE RATED CONSTRUCTION SHALL BE SEALED WITH A FIRE RATED CAULK EQUAL TO OR EXCEEDING THE CONSTRUCTION FIRE RATING.
- FLEXIBLE AIR DUCTS SHALL CONFORM TO UL181 IN ACCORDANCE WITH SECTION 603.3 OF THE 2009 EDITION OF THE INTERNATIONAL MECHANICAL CODE. LENGTH OF FLEX DUCT SHALL NOT EXCEED 5 FT.
- ALL MECHANICAL EQUIPMENT SHALL BE LABELED AS TO THE AREA(S) SERVED IN ACCORDANCE WITH SECTION 304.11 OF THE 2009 EDITION OF THE INTERNATIONAL MECHANICAL CODE.
- PROVIDE AND INSTALL BALANCING DAMPER AT EACH BRANCH TAKE-OFF OF SUPPLY AND EXHAUST AIR SYSTEMS. PROVIDE AND INSTALL BALANCING DAMPER AT EACH BRANCH TAKE-OFF OF RETURN SYSTEMS WHERE INDICATED.
- MOUNT SPACE TEMPERATURE SENSORS, THERMOSTATS, OCCUPANCY SENSORS, AND REMOTE CONTROL DEVICES WITH CENTERLINE AT 46" AFF UNLESS OTHERWISE INDICATED.
- COORDINATE WITH ELECTRICAL CONTRACTOR TO PROVIDE 120V OUTLET WITHIN 25 FT. OF ALL ROOFTOP AND EXTERIOR MECHANICAL EQUIPMENT.
- ALL FRESH AIR INTAKES AND EXHAUST OPENINGS SHALL HAVE 1/4" MESH BIRD SCREENS.
- PROVIDE BALANCING REPORT IN ACCORDANCE WITH THE 2009 EDITION OF THE INTERNATIONAL MECHANICAL CODE. SUBMIT TO THE ARCHITECT FOR FINAL APPROVAL. PROVIDE BALANCING REPORT TO INSPECTOR AT TIME OF HEATING FINAL INSPECTION.
- DUCTWORK SHALL BE SEALED IN ACCORDANCE WITH THE SPECIFICATIONS AND THE 2009 EDITION OF THE INTERNATIONAL ENERGY CONSERVATION CODE, SECTION 803.2.8.
- MANY AREAS OF CONSTRUCTION ARE VERY CONGESTED. INSTALLATION OF MATERIALS AND EQUIPMENT SHALL BE COORDINATED WITH ALL TRADES TO ENSURE THAT THERE IS ADEQUATE ROOM FOR ALL MATERIALS AND EQUIPMENT TO BE INSTALLED UNDER THIS CONTRACT. INSTALLATION OF MATERIALS AND EQUIPMENT WHICH DOES NOT ALLOW FOR INSTALLATION OF REMAINING MATERIALS AND EQUIPMENT WILL BE REMOVED AND RELOCATED AT NO COST TO THE OWNER. IN GENERAL, PREFERENCE SHALL BE GIVEN TO THE INSTALLATION OF LARGER COMPONENTS FIRST (I.E. VAV BOXES, DUCTWORK, HYDRONIC PIPING, SPRINKLER PIPING AND CONDUIT RESPECTIVELY).

KEYNOTES

- PROVIDE AND INSTALL NEW VAV TERMINAL UNIT WITH REHEAT COIL, SEE "VAV UNIT CONNECTION DETAIL" ON SHEET H-7.
- NEW SPIN-IN FITTING TO DIFFUSER, SEE "ROUND BRANCH DUCT TO DIFFUSER DETAIL" ON SHEET H-7.
- NEW DIFFUSER, SEE "TYPICAL DIFFUSER CONNECTION DETAIL" ON SHEET H-7.
- PATCH EXISTING OPENINGS IN EXISTING WALL TO MATCH EXISTING.
- PROVIDE AND INSTALL AT CONTRACTORS OPTION, HORIZONTAL OR VERTICAL COMBINATION FIRE/SMOKE DAMPERS IN NEW SUPPLY AND RETURN DUCTWORK AT SHAFT PENETRATION.

XX ONCOLOGY CLINIC MOD.	05/15/2011 06/29/2012	 CONSULTING ENGINEERS PH. (719) 637-8850 • FAX (719) 632-0300 2912 BEACON ST. COLORADO SPRINGS, CO. 80907		Drawing Title MECHANICAL FIFTH FLOOR NEW WORK	Project Title FIFTH FLOOR AHU	Project Number 575-07-106	OFFICE OF FACILITIES MANAGEMENT 	
"AS-BUILT" RECORD DRAWING	09/25/2012			Approved: Medical Center Director	Location 2121 NORTH AVENUE GRAND JUNCTION, CO 81505	Building Number BUILDING NO. 1		Drawing Number H-4
Revisions	Date			Approved: Assistant Administrator, Engineering Department	Date AUGUST 05, 2011	Checked TBS	Drawn DJS	Dwg. X of X