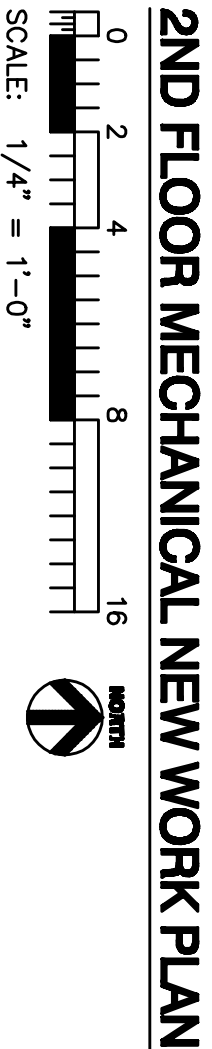
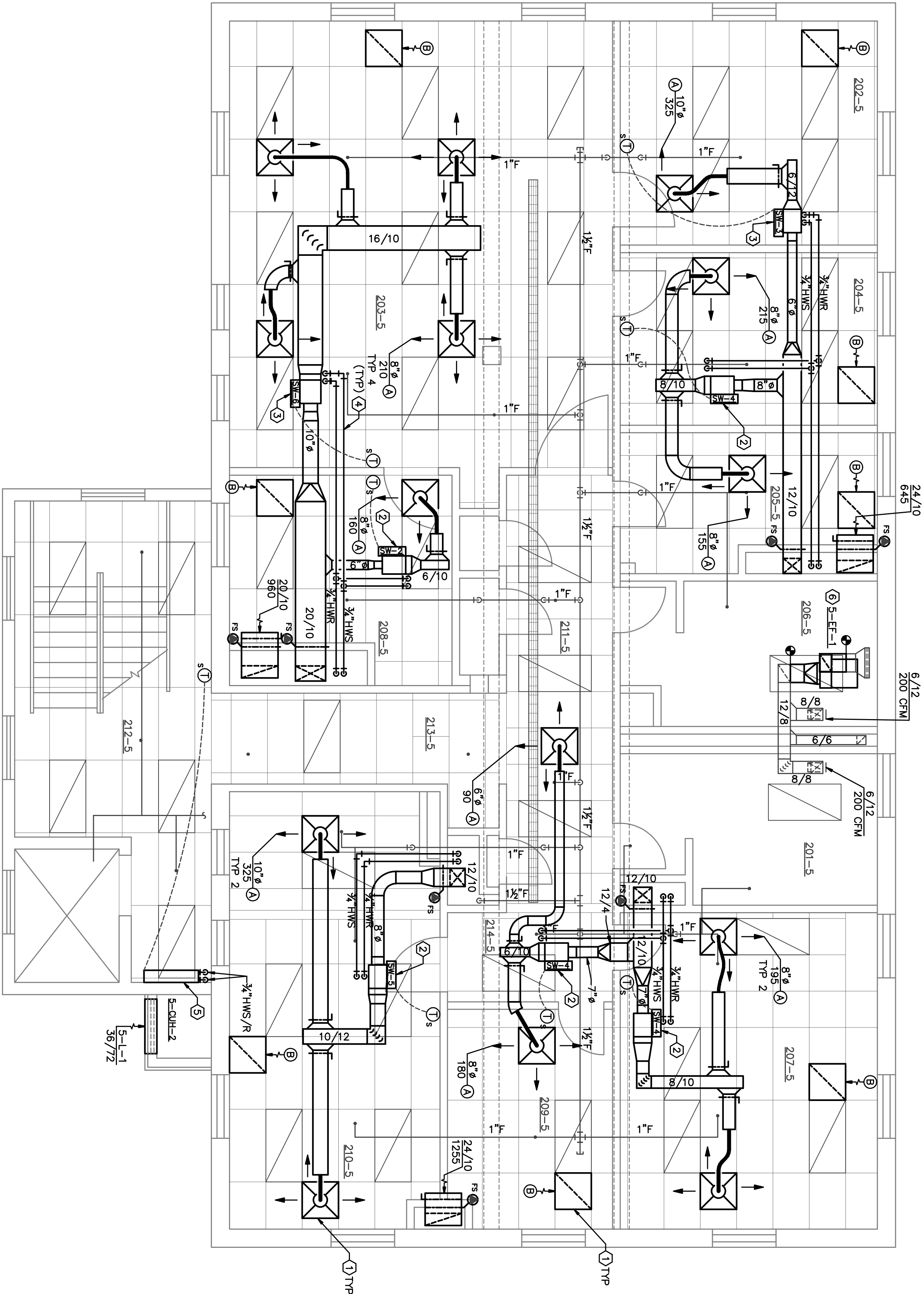


35% REVIEW	04/30/2009
75% REVIEW	05/21/2009
100% FINAL	06/05/2009
Revisions	Date



GENERAL NOTES

1. NOT ALL DUCTWORK, PIPING, AND ACCESSORIES ARE NECESSARILY SHOWN ON THIS DRAWING. BUS PROJECTS SHOULD BE RESS-CHECKED FOR SHOW LISTING OF THE EQUIPMENT, MATERIALS, AND ACCESSORIES TO BE USED IN THE CONSTRUCTION DETAILS, SCHEDULES AND SPECIFICATIONS FOR COMPLETE SYSTEM REQUIREMENTS.
 2. THE CONTRACTOR SHALL FIELD VERIFY EXISTING CONDITIONS PRIOR TO START OF ANY WORK, AND SHALL NOTIFY ARCHITECT IMMEDIATELY OF ANY DISCREPANCY BETWEEN THE DRAWINGS AND THE ACTUAL FIELD CONDITIONS.
 3. COORDINATE ALL PENETRATIONS OF FLOOR, ROOF, WALLS, ETC. WITH MECHANICAL, ELECTRICAL, PLUMBING, AND STRUCTURAL REQUIREMENTS.
 4. ALL MATERIALS IN THE RETURN AIR PLenum SHALL HAVE A MAXIMUM FLAME SPREAD RATING OF 25 AND A MAXIMUM SMOKE DEVELOPED RATING OF 10. ALL MATERIALS IN THE SUPPLY AIR DUCTS SHALL HAVE A MAXIMUM FLAME SPREAD RATING OF 25 AND A MAXIMUM SMOKE DEVELOPED RATING OF 10. INTERNATIONAL MECHANICAL CODE.
 5. FLEXIBLE AIR DUCTS SHALL CONFORM TO UL911 IN ACCORDANCE WITH SECTION 602.6 OF THE 2006 EDITION OF THE INTERNATIONAL MECHANICAL CODE. LENGTH OF FLEX DUCT SHALL NOT EXCEED 5 FT..
 6. ALL MECHANICAL EQUIPMENT SHALL BE LABELED AS TO THE AREA(S) SERVED IN ACCORDANCE WITH SECTION 304.11 OF THE 2006 EDITION OF THE INTERNATIONAL MECHANICAL CODE.
 7. PROVIDE ACCESS DOORS OR OTHER MEANS OF APPROVED ACCESS TO ALL THE DAMPERS, AND THE /SHOCK DAMPERS. ACCESS DOORS SHALL BE LABELED ON THE ACCESS DOOR AND ON THE CEILING BELOW.
 8. PROVIDE AN INSTANT BALANCING DAMPER AT EACH BRANCH TAKE-OFF OR DAMPER AT EACH BRANCH TAKE-OFF OF RETURN SYSTEMS WHERE INDICATED.
 9. MOUNT SPACE TEMPERATURE SENSORS, THERMOSTATS, OCCUPANCY SENSORS, AND REMOTE CONTROL DEVICES WITH CENTRIFUGAL AT 48" AFF UNLESS OTHERWISE NOTED.
 10. REFRIGERANT PIPING SHALL BE SIZED AND INSTALLED IN STRICT ACCORDANCE WITH THE MANUFACTURER'S INSTALLATION INSTRUCTIONS. COPPER REFRIGERANT PIPING SHALL BE PROTECTED FROM POTENTIAL DAMAGE.
 11. COORDINATE WITH ELECTRICAL CONTRACTOR TO PROVIDE 120V OUTLET WITHIN 25 FT. OF ALL EXTERIOR MECHANICAL EQUIPMENT.
 12. ALL FRESH AIR INTAKES AND EXHAUST OPENINGS SHALL HAVE 1/4" MESH BIRD SCREENS.
 13. PROVIDE BALANCING REPORT IN ACCORDANCE WITH THE 2006 EDITION OF THE INTERNATIONAL MECHANICAL CODE. SUBMIT TO THE ARCHITECT FOR REVIEW AND APPROVAL. PROVIDE BALANCING REPORT TO INSPECTOR AT TIME OF FINAL PERFORMANCE TESTING.
 14. DUCTWORK SHALL BE SEALED IN ACCORDANCE WITH THE SPECIFICATIONS FOR AIR LEAKAGE TESTS OF THE INTERNATIONAL ENERGY CONSERVATION CODE, SECTION 503.2.7.
 15. PROVIDE AND INSTALL MANUAL AIR VENTS AT ALL HIGH POINTS AND DRAIN VALVES AT ALL LOW POINTS IN HYDRONIC PIPING.
 16. ALL HEATING WATER SUPPLY AND RETURN BRANCH PIPING TO TERMINAL UNITS SHALL BE 3/4" UNLESS NOTED OTHERWISE. ALL BRANCH TAKE-OFFS SHALL BE OFF THE BOTTOM OF THE MAIN.
 17. MAJOR AREAS OF CONSTRUCTION ARE VERY CONCERNED, INSTALLATION OF MATERIALS AND EQUIPMENT SHALL BE COORDINATED WITH ALL TRADES TO PREVENT DAMAGE TO EXISTING FINISHES. ALL MATERIALS AND EQUIPMENT TO BE INSTALLED UNDER THIS CONTRACT. INSTALLATION OF MATERIALS AND EQUIPMENT WHICH DOES NOT ALLOW FOR INSTALLATION OF AT NO COST TO THE OWNER. IN GENERAL, PREFERENCE SHALL BE GIVEN TO THE INSTALLATION OF LARGER COMPONENTS FIRST (I.E., HVAC BOXES, PACKAGED UNIT, CHILL TRAIL, HYDRONIC PIPING, SPRINKLER PIPING AND CONDUNIT RESPECTIVELY).
- KEYNOTES

①

MOUNT NEW DIFFUSERS AND RETURN GRILLS IN LOCATIONS SHOWN.

②

NEW VAV UNITS. SEE "VAV UNIT COIL CONNECTION WITH 2-WAY VALVE DETAIL ON SHEET 1B."

③

NEW VAV UNITS. SEE "VAV UNIT COIL CONNECTION WITH 2-WAY VALVE DETAIL ON SHEET 1B."

④

NEW HEATING HOT WATER PIPING. SEE "HEATING HOT WATER PIPING SUPPORT HANGER DETAIL ON SHEET 1B."


⑤

NEW CABINET UNIT HEATER. SEE "CABINET UNIT HEATER HOT WATER PIPING DIAGRAM ON SHEET 1B."

⑥

MOUNT NEW UTILITY SET EXHAUST FAN ABOVE RESTROOMS IN ATTIC.

KEYNOTES

Drawing Title SECOND FLOOR MECHANICAL NEW WORK PLAN		Project Title REPLACE AIR HANDLING UNIT BUILDING 5		Project Number 575-10-105		OFFICE OF FACILITIES MANAGEMENT  DEPARTMENT of WISCONSIN-ADAMS	
Approved: _____ Medical Center Director		Location 2121 NORTH AVENUE GRAND JUNCTION, CO 81501		Building Number BUILDING NO. 5			
Approved: _____ Assistant Administrator, Engineering Department		Date April 16, 2009		Checked TBS		Drawn DMS	
Drawing Number H17							