
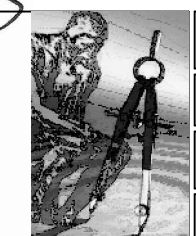


NORTH

A circular compass rose with a vertical line and a horizontal line intersecting at the center. The top of the vertical line is labeled 'NORTH', the bottom is labeled 'SOUTH', the right side of the horizontal line is labeled 'EAST', and the left side is labeled 'WEST'.

UNITED STATES
DEPARTMENT OF VETERANS AFFAIRS



Drawing Title	
SECOND LEVEL	
ELECTRICAL POWER PLAN	
Project No.	Contract No.
671-11-712	VA257-F
Building No.	AutoCAD File Name
-	671-11-712 E

Project Title		
NUCLEAR MEDICINE RELOCATION		
Designed By	Checked By	Drawn By
DS	MZ	
Location		
SAN ANTONIO, TEXAS		

Date	01/04/2013
Scale:	AS NOTED
Drawing No.	E-106

Veterans
Administration

ADD. ALT #2: PROVIDE MIN. 3" CONDUIT THROUGH FIRST LEVEL INTERSTITIAL SPACE FOR EACH 6"x3" MODULE OF FLOOR DUCT ALONG FLOOR DUCT ROUTE SHOWN IN POWER PLAN.

three inches = one foot

one and one half inches = one foot

one inch = one foot

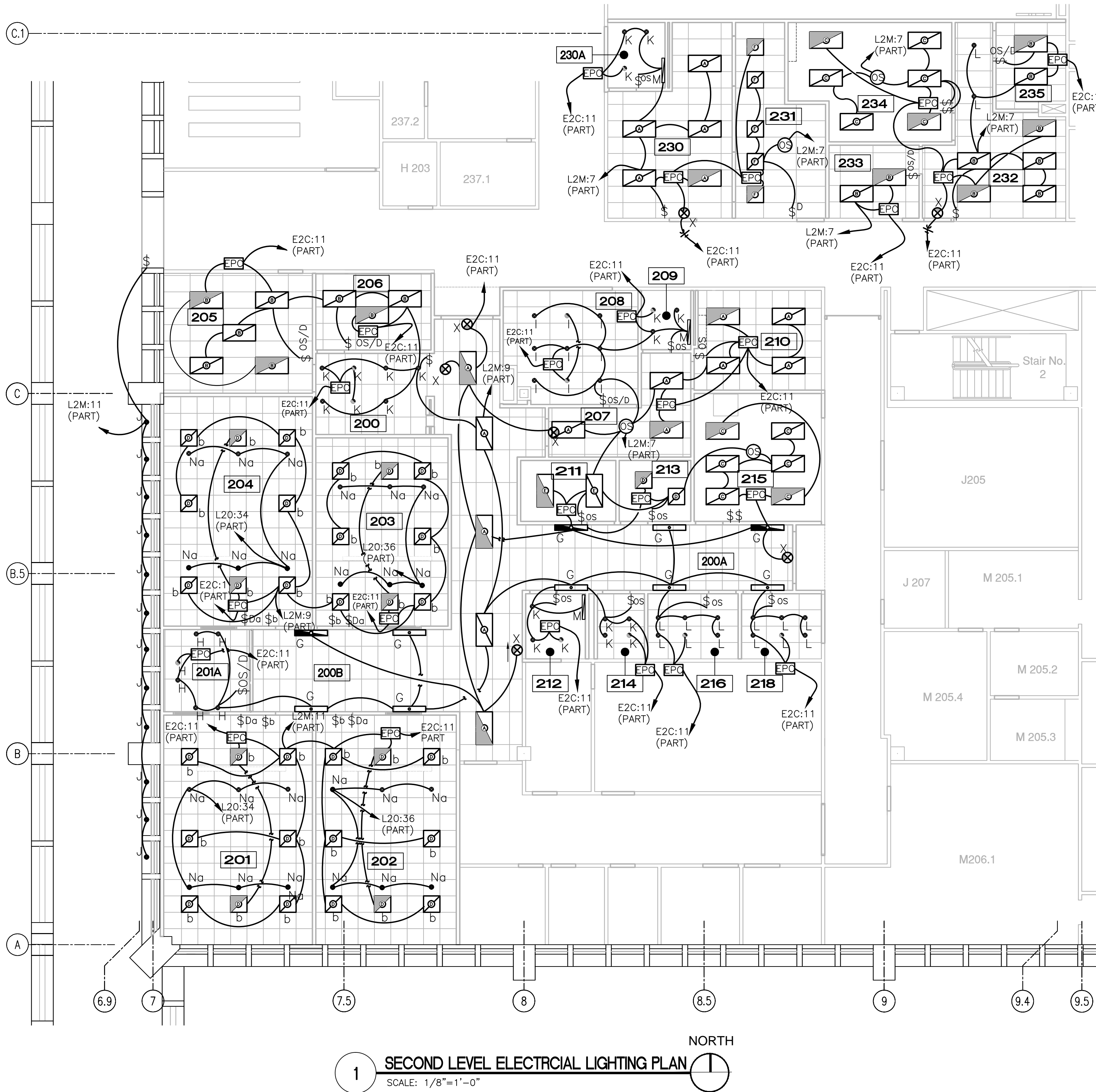
three quarters inch = one foot

one half inch = one foot

three eighths inch = one foot

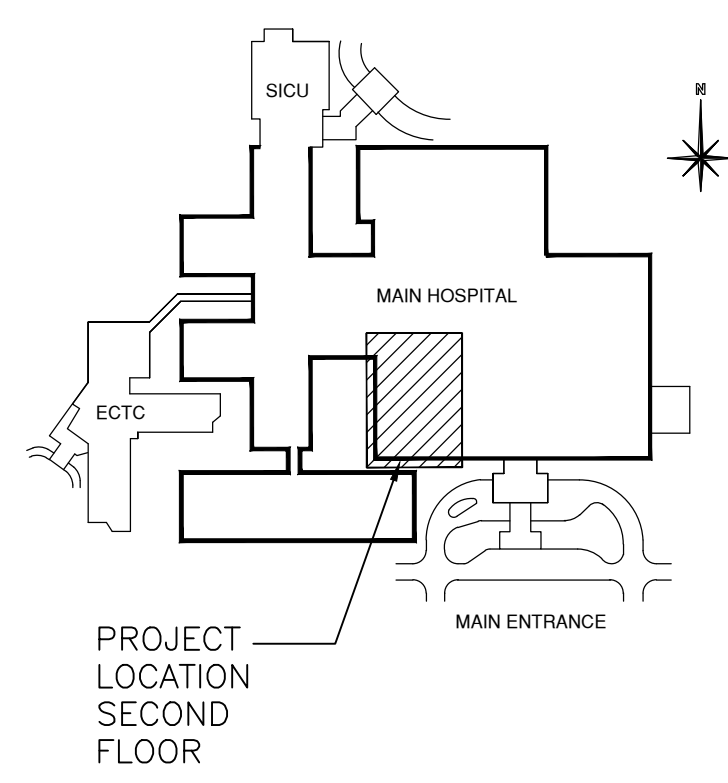
one quarter inch = one foot

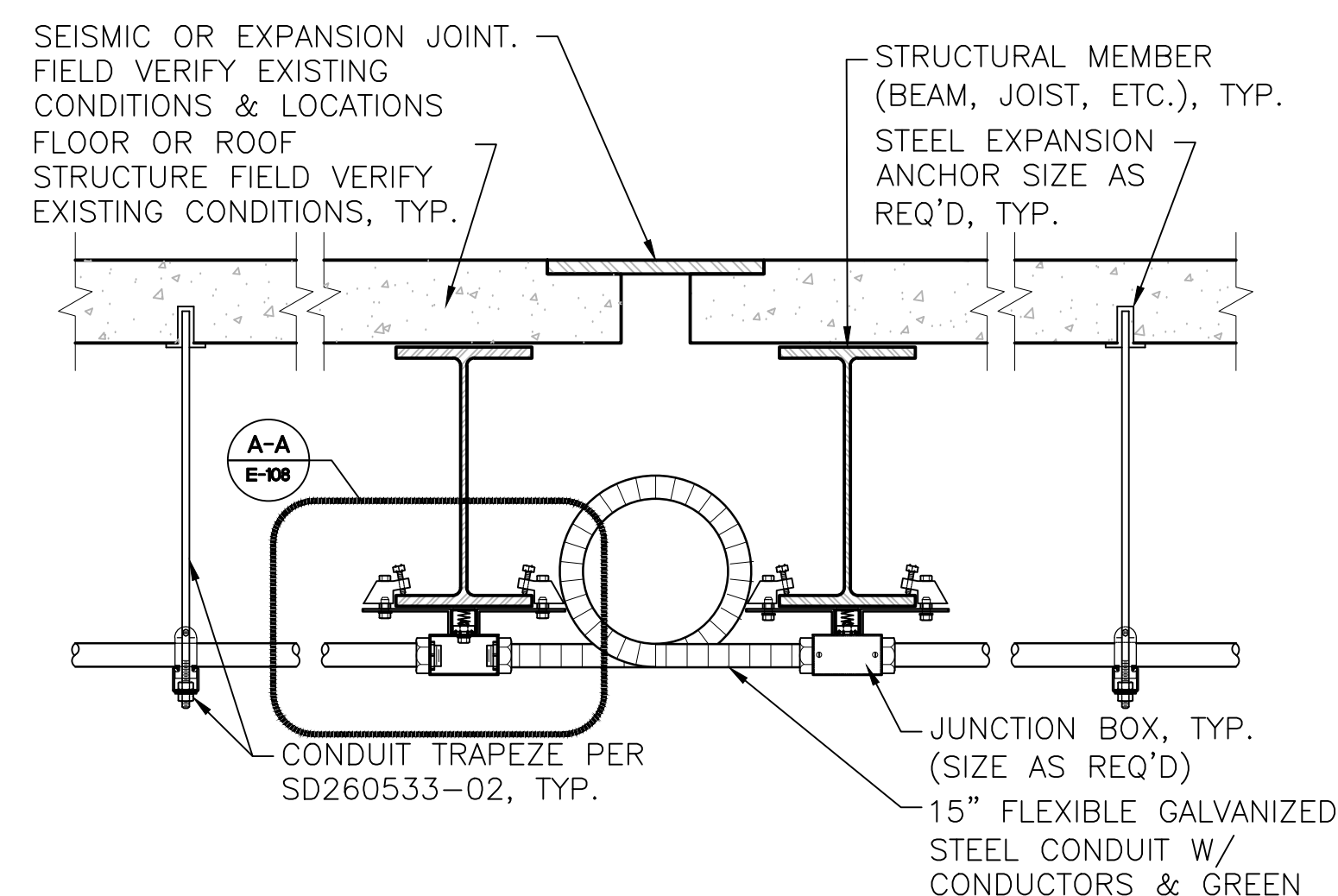
one eighth inch = one foot



1 SECOND LEVEL ELECTRICAL LIGHTING PLAN
SCALE: 1/8"=1'-0"

- GENERAL NOTES
- ELECTRICAL CONTRACTOR SHALL VERIFY PROPOSED LIGHT FIXTURES WILL INSTALL AS PROPOSED AND ALL ADAPTERS AND INSTALLATION REQUIREMENTS FOR LIGHTING DEVICES ARE INCLUDED FOR FINAL INSTALLATION.
 - LIGHT FIXTURES W/ MORE THAN TWO LAMPS SHALL HAVE TWO OUTER LAMPS CONTROLLED W/ ONE SWITCH AND INNER LAMPS(S) CONTROLLED BY A SECOND SWITCH, UNLESS ON DIMMER CONTROL.
 - EACH BRANCH CIRCUIT HOMERUN SHALL HAVE NO MORE THAN THREE CIRCUITS. EACH BRANCH CIRCUIT HOMERUN SHALL HAVE A SEPARATE GREEN INSULATED EQUIPMENT GROUNDING CONDUCTOR.
 - MULTI-GANG BACKBOXES FOR DIFFERENT VOLTAGES AND TYPES OF EMERGENCY AND NORMAL BRANCH WIRING DEVICES SHALL HAVE DIVIDERS BETWEEN DEVICES.
 - THE SHUT OFF, DEMOLITION, CONSTRUCTION AND ACTIVATION OF THE ELECTRICAL SYSTEMS TO BE COORDINATED WITH THE PROJECT PHASING - SEE SHEET A-100.







1. CAST ALUMINUM HOUSING SUITABLE FOR HIGH-ABUSE APPLICATIONS.
2. .13" POLYCARBONATE COVER, SECURED WITH STAINLESS STEEL TAMPER-RESISTANT SCREWS.
3. POLYCARBONATE FACEPLATE WITH UNIVERSAL DIRECTIONAL CHEVRON KNOCKOUTS.
4. LETTERS 6 INCHES TALL AND 3/4" WIDE STROKES.
5. LED LAMPS.
6. POWER FAILURE AND BOTTOM-OUT PROTECTION, AND SURGE PROTECTION.
7. UNIVERSAL MOUNTING, INTERNAL GREEN GROUNDING SCREW.
8. VANDAL-RESISTANT MAGNETIC TEST SWITCH.
9. INDICATOR LIGHTS TO SHOW WHEN UNIT IS ON NORMAL POWER OR EMERGENCY POWER.

4 SCALE: NTS

Veterans