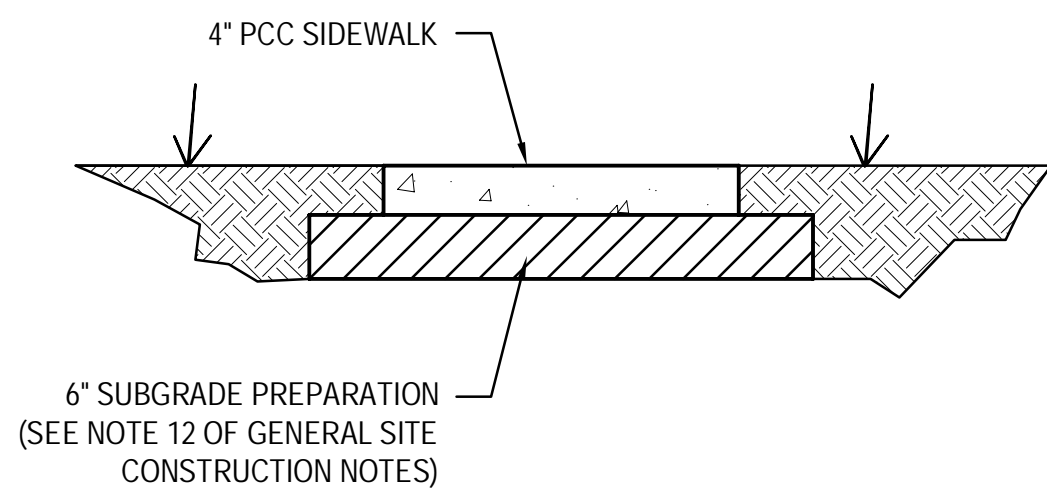
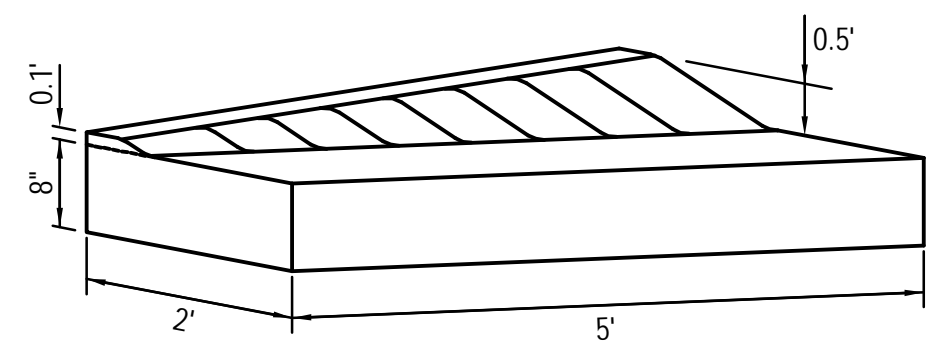


GENERAL SITE CONSTRUCTION NOTES

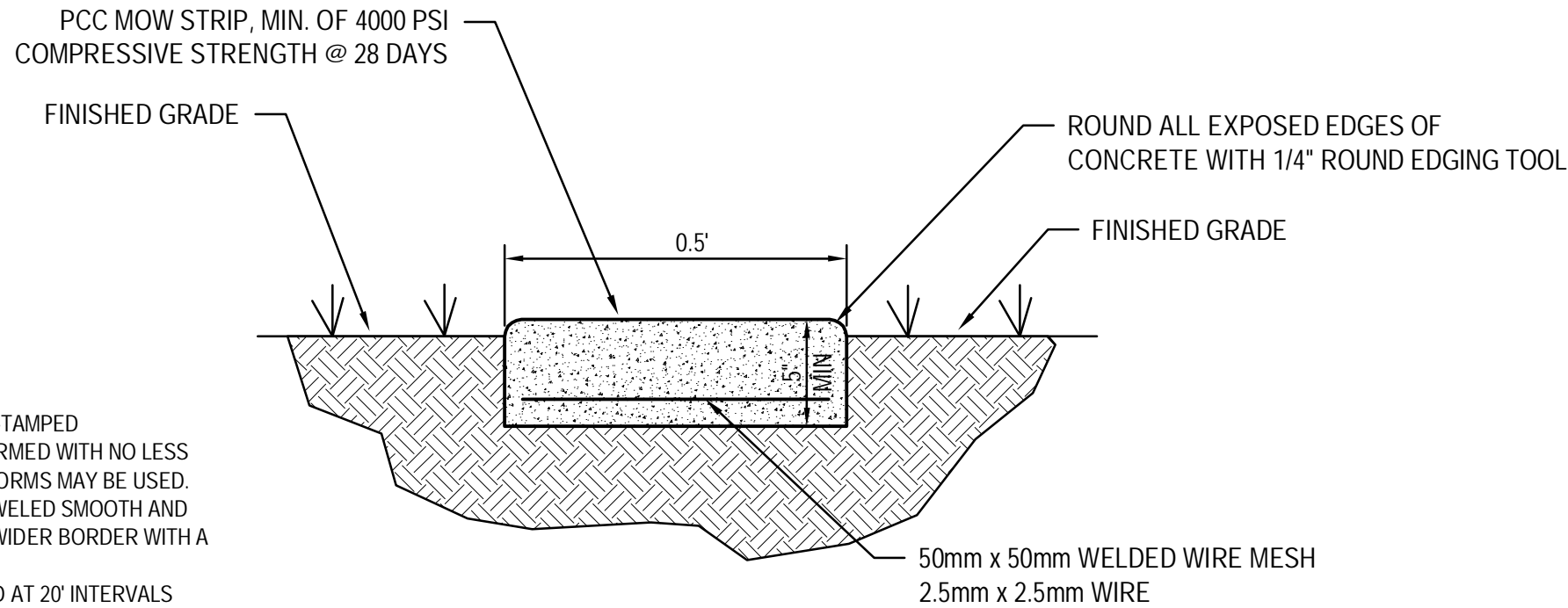
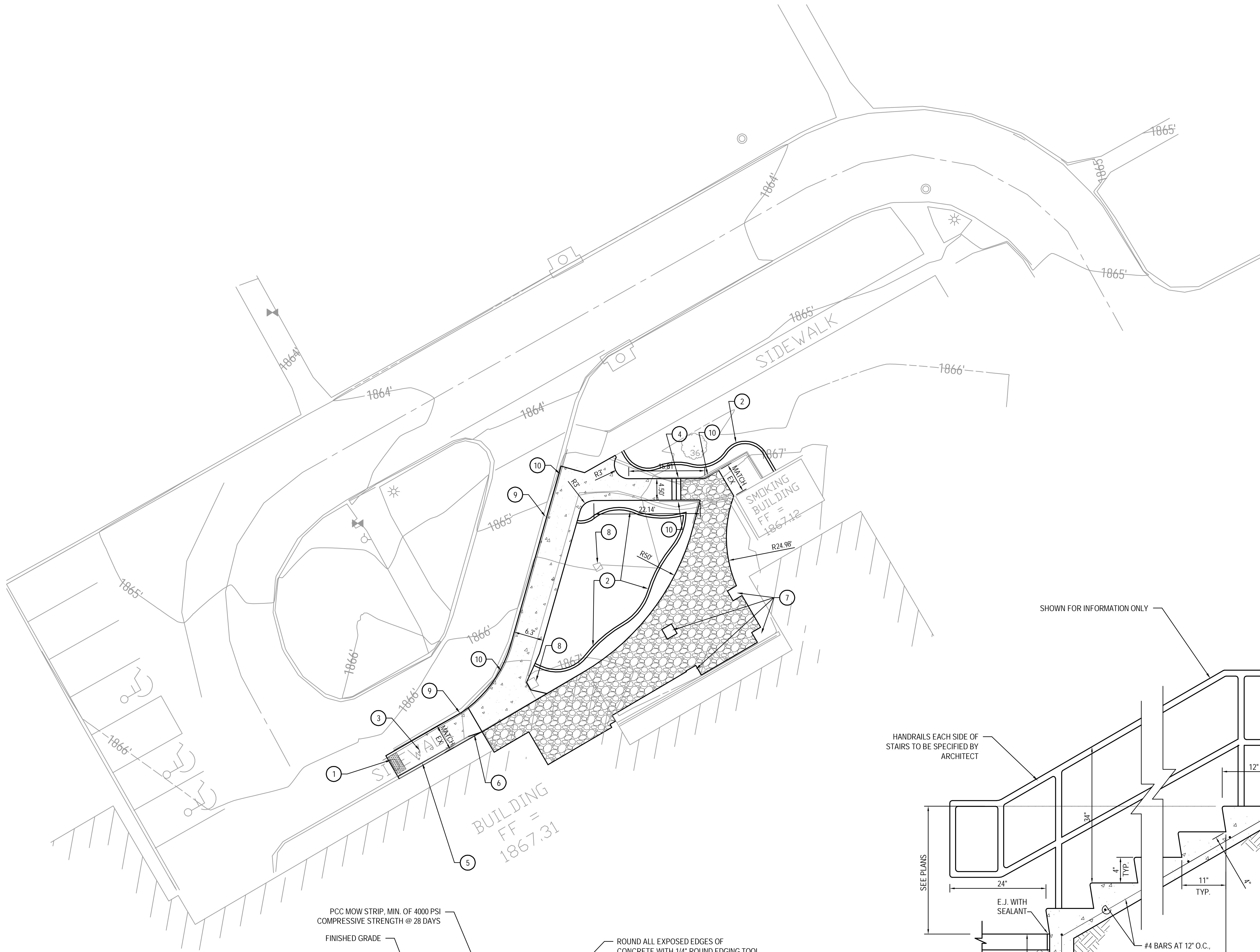
1. REFER TO SPECIFICATION SECTION 320523, CEMENT AND CONCRETE FOR EXTERIOR IMPROVEMENTS FOR SITE WORK IDENTIFIED IN THIS PLAN SET.
2. THE PORTLAND CEMENT CONCRETE FOR THE MIX DESIGN SHALL BE EXTERIOR IMPROVEMENTS AIR-ENTRAINED, TYPE IP CEMENT IS NOT PERMITTED FOR USE.
3. CONCRETE SHALL HAVE A MINIMUM COMPRESSIVE STRENGTH OF 4000 PSI AT 28 DAYS
4. THE PROPOSED GRADES SHOWN IN THE PAVED AREA REFER TO FINISHED TOP-OF-PAVEMENT SLAB GRADE, UNLESS OTHERWISE INDICATED. TOP-OF-CURB, WHERE SPECIFIED, SHOWN AS TC = 00.00.
5. THE CONTRACTOR SHALL BE CHARGED FOR REPLACING CONSTRUCTION STAKES AND LOT PINS WHICH ARE DESTROYED BY HIS OPERATIONS.
6. UTILITIES ARE SHOWN AS A CONVENIENCE FOR THE CONTRACTOR. THE LOCATIONS OF ALL AERIAL AND UNDERGROUND UTILITY FACILITIES MAY NOT BE INDICATED IN THESE PLANS. UNDERGROUND UTILITIES, WHETHER INDICATED OR NOT, WILL BE LOCATED AND FLAGGED BY THE UTILITY COMPANIES AT THE CONTRACTOR'S REQUEST. NO EXCAVATION WILL BE PERMITTED IN THE AREA OF THE UNDERGROUND UTILITIES UNTIL ALL FACILITIES HAVE BEEN LOCATED AND IDENTIFIED TO THE SATISFACTION OF ALL PARTIES AND THEN ONLY WITH EXTREME CARE TO AVOID ANY POSSIBILITY OF DAMAGES TO THE FACILITIES.
7. NON-COLORED CONCRETE PAVEMENT SHALL BE CURED USING A WHITE PIGMENTED LIQUID MEMBRANE-FORMING CURING COMPOUND THAT HAS BEEN APPROVED BY THE STATE OF NEBRASKA DEPARTMENT OF ROADS. THE MINIMUM RATE OF APPLICATION SHALL BE 200 SQ. FT. PER GAL. IF A MECHANICAL-POWERED SPRAYER IS USED AND 100 SQ. FT. PER GAL. IF A HAND POWERED SPRAYER IS USED.
8. WATER REDUCING ADMIXTURES SHALL BE ADDED TO ALL HAND-PLACED AND FINISHED CONCRETE.
9. A DIAMOND EDGE SAW BLADE SHALL BE USED FOR CUTTING ALL REQUIRED CONTRACTION AND LONGITUDINAL PAVEMENT JOINTS. ALL SAW CUTS REQUIRED SHALL BE SUBSIDIARY TO ITEMS FOR WHICH DIRECT PAYMENT IS MADE.
10. SUBGRADE PREPARATION SHALL EXTEND A MINIMUM OF ONE FOOT Laterally BEYOND EDGE OF SIDEWALK.
11. SUBGRADE TO BE COMPACTED TO A MINIMUM OF 95% OF MAXIMUM DRY DENSITY AT A MOISTURE CONTENT BETWEEN -3 OPTIMUM AND +4 PERCENT OF OPTIMUM AS PER ASTM D 698 STANDARD PROCTOR.
12. JOINTS SHALL BE PERPENDICULAR TO EDGES AND RADI, AND SHALL NO FOR ANGLES LESS THAN 45 DEGREES OR OVER 225 DEGREES.
13. ISOLATION JOINTS SHALL BE PROVIDED AROUND ANY STRUCTURE.



TYPICAL SIDEWALK SECTION DETAILS
NOT TO SCALE

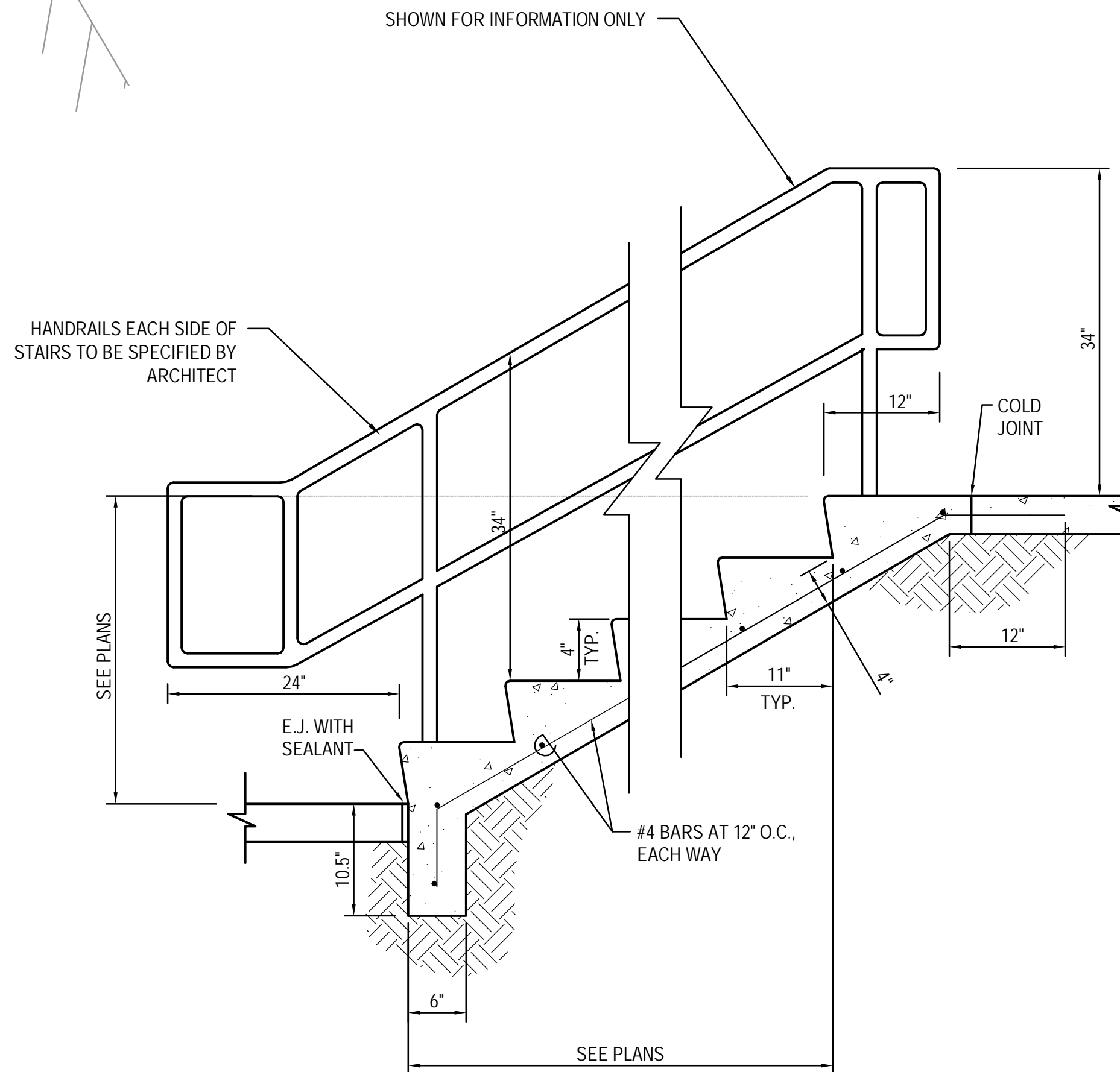


DROP CURB
NOT TO SCALE



- NOTES:
1. SUBGRADE SHALL BE DRY AND WELL-TAMPED
 2. CONCRETE MOW STRIP SHALL BE FORMED WITH NO LESS THAN 2"x6" (NOM.) LUMBER. STEEL FORMS MAY BE USED.
 3. CONCRETE SURFACE SHALL BE TROWELED SMOOTH AND ALL EXPOSED EDGES BE GIVEN A 2" WIDER BORDER WITH A ROUNDED EDGING TOOL.
 4. EXPANSION JOINTS SHALL BE PLACED AT 20' INTERVALS

CONCRETE MOW STRIP DETAIL
NOT TO SCALE



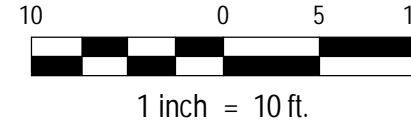
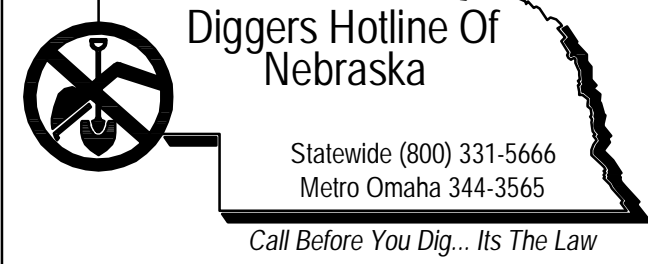
EXTERIOR STAIRS ON GRADE
SCALE: 1" = 1' - 0"

PAVING KEYED NOTES

1. INSTALL/ CONSTRUCT TRUNCATED DOME PANEL.
2. CONSTRUCT MOW STRIP. SEE DETAIL ON THIS SHEET.
3. CONSTRUCT PCC SIDEWALK RAMP.
4. CONSTRUCT STAIRCASE. SEE DETAIL ON THIS SHEET.
5. CONSTRUCT INTEGRAL CURB.
6. CONSTRUCT DROP CURB, SEE DETAIL THIS SHEET.
7. PROPOSED PERGOLA FOOTINGS SEE ARCHITECT'S SHEETS FOR DETAIL.
8. EXISTING VAULT TO REMAIN AND SHALL BE PROTECTED DURING CONSTRUCTION.
9. EXISTING CURB TO REMAIN.
10. PROPOSED HAND RAIL. SEE ARCHITECT'S PLAN FOR DETAIL.

LEGEND

- CONSTRUCT 4" PCC SIDEWALK WITH STAMPED FINISH. SEE ARCHITECTURAL PLAN FOR DETAILS.
- CONSTRUCT 4" PCC SIDEWALK



K:\Projects\2012\114\p01\Plans\SITE_VA_000.dwg 1-04-13 10:08:28 AM BrodW

Revisions	Date

© 2000 Calvin L. Hinz Architects P.C.
These plans are specifically designed for construction by Calvin L. Hinz Architects and are intended for no other purposes. Permission for use of this document in part or whole without written consent of Calvin L. Hinz Architects is prohibited.

IMPORTANT CONTRACTOR'S NOTE
1. ALL CONTRACTORS ARE RESPONSIBLE FOR REVIEWING ENTIRE SET OF DOCUMENTS TO DETERMINE THEIR FULL SCOPE OF WORK. CONTRACTOR SHALL NOT BE ALLOWED EXTRA COSTS DUE TO FAILURE TO REVIEW ENTIRE SET OF DOCUMENTS.
2. ANY USE OF THESE ELECTRONIC DRAWINGS OR SCALING OF THE PRINTED DOCUMENTS ARE DONE SO AT THE CONTRACTORS RISK.

ARCHITECT/ENGINEERS:
Calvin L. Hinz Architects, P.C.
3705 North 200th Street
Elkhorn, Nebraska 68022
Phone: 402.291.6941 Fax: 402.291.9195

E & A CONSULTING GROUP, INC.
ENGINEERING • PLANNING • ENVIRONMENTAL COMPLIANCE • FIELD SERVICES
330 NORTH 11TH STREET • OMAHA, NE 68104
PHONE: 402.395-4300 FAX: 402.395-5399
www.eacg.com

Drawing Title
PAVING PLAN
Approved Project Director
KEVIN HUTSELL

100% CD-3 SUBMITTAL

Project Title
**SMOKING SHELTER SITTING AREA
NWHCS GRAND ISLAND**
Location
VAMC Grand Island, NE
Date
JANUARY 9, 2013
Checked
PJG
Drawn
BJW

Project Number
636-12-817
Building Number
ONE
Drawing Number
C1.4
Dwg 5 of 11

Office of Construction and Facilities Management
Department of Veterans Affairs