

three inches = one foot
one and one half inches = one foot
one inch = one foot
three quarters inch = one foot
one half inch = one foot
three eighths inch = one foot
one quarter inch = one foot
one eighth inch = one foot

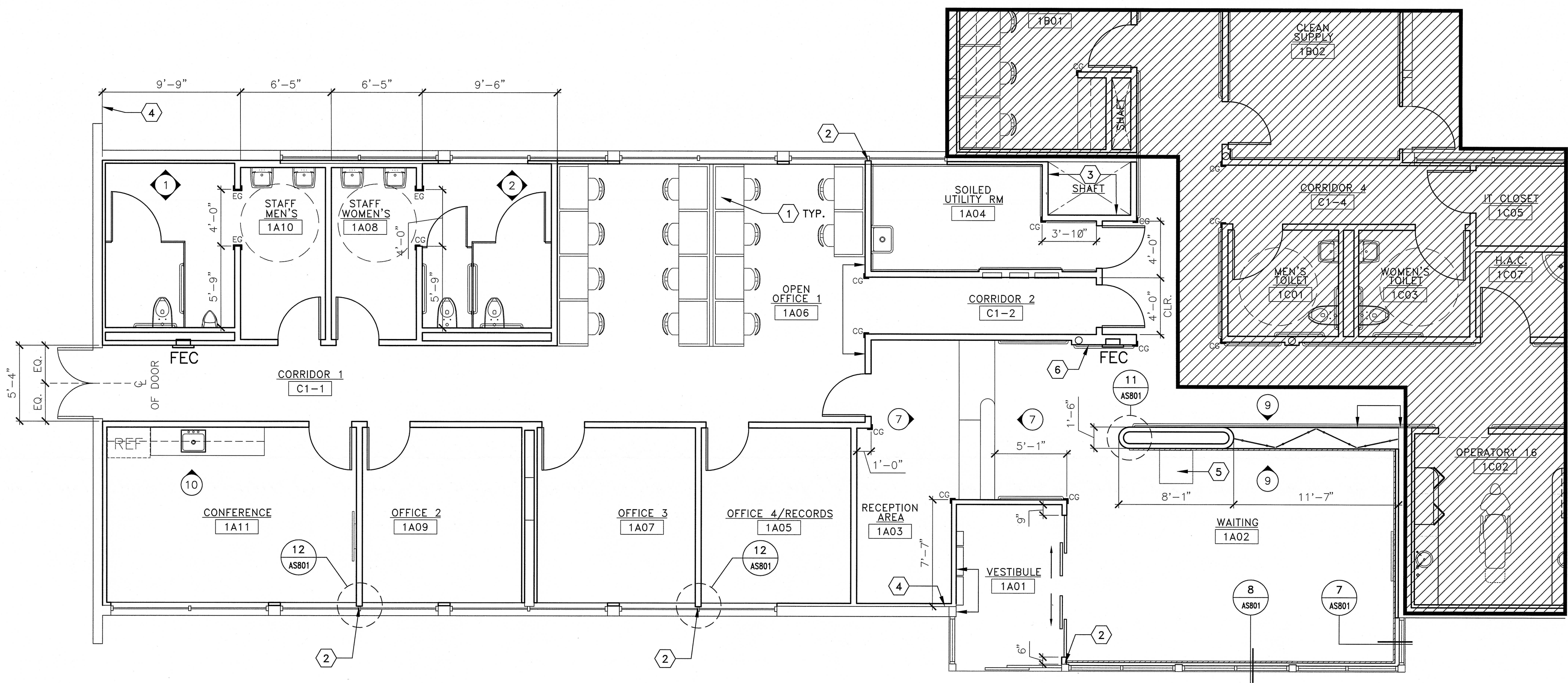
GENERAL NOTES

1. ALL DIMENSIONS ARE TO F.O.S., U.O.N.
2. SEE SHEETS AS601 AND AS602 FOR INTERIOR ELEVATIONS.

SHEET NOTES

- 1 BUILT-IN CARRELS, TYPICAL OF 14
- 2 CENTER NEW WALL ON EXISTING MULLION BETWEEN WINDOWS. SEE DETAIL
- 3 ALIGN NEW WALL WITH EXISTING SHAFT OPENING.
- 4 DIMENSION TO FACE OF EXISTING CMU WALL
- 5 SELF-SERVICE KIOSK (V V)
- 6 FRAME METAL STUD WALL AROUND (E) COLUMN

MATCHLINE B-B SEE SHEET AS303



MATCHLINE C-C SEE SHEET AS304

LEGEND

- CORNER GUARD/END WALL GUARD, SEE DETAILS
- HANDRAIL; SEE DETAIL
- CHAIR RAIL; SEE DETAIL
- BUMPER RAIL; SEE DETAIL
- FULLY RECESSED FIRE EXTINGUISHER CABINET

ENLARGED FLOOR PLAN A-A
SCALE: 1/4" = 1'-0"

"FULLY SPRINKLERED"

CONSULTANTS:		ARCHITECT/ENGINEERS:		Drawing Title		Project Title		Project Number		Office of Facilities Management Department of Veterans Affairs	
				ENLARGED FLOOR PLAN A-A		DESIGN OF BUILD BACK BLDG 88 McCLELLAN		612-12-288			
				Approved Project Director		Location McCLELLAN, CA		Building Number MCC-88			
						Date 09/12/2012		Drawing Number AS302			
Revisions		State of California Jeff R. Roberts #C-23213 Exp. 8/12 REGISTERED ARCHITECT		K.F. DAVIS ENGINEERING, INC 530 LA GONDA WAY, SUITE E DANVILLE, CA 94526		Checked JR		Drawn CM		Dwg. 6 of 73	