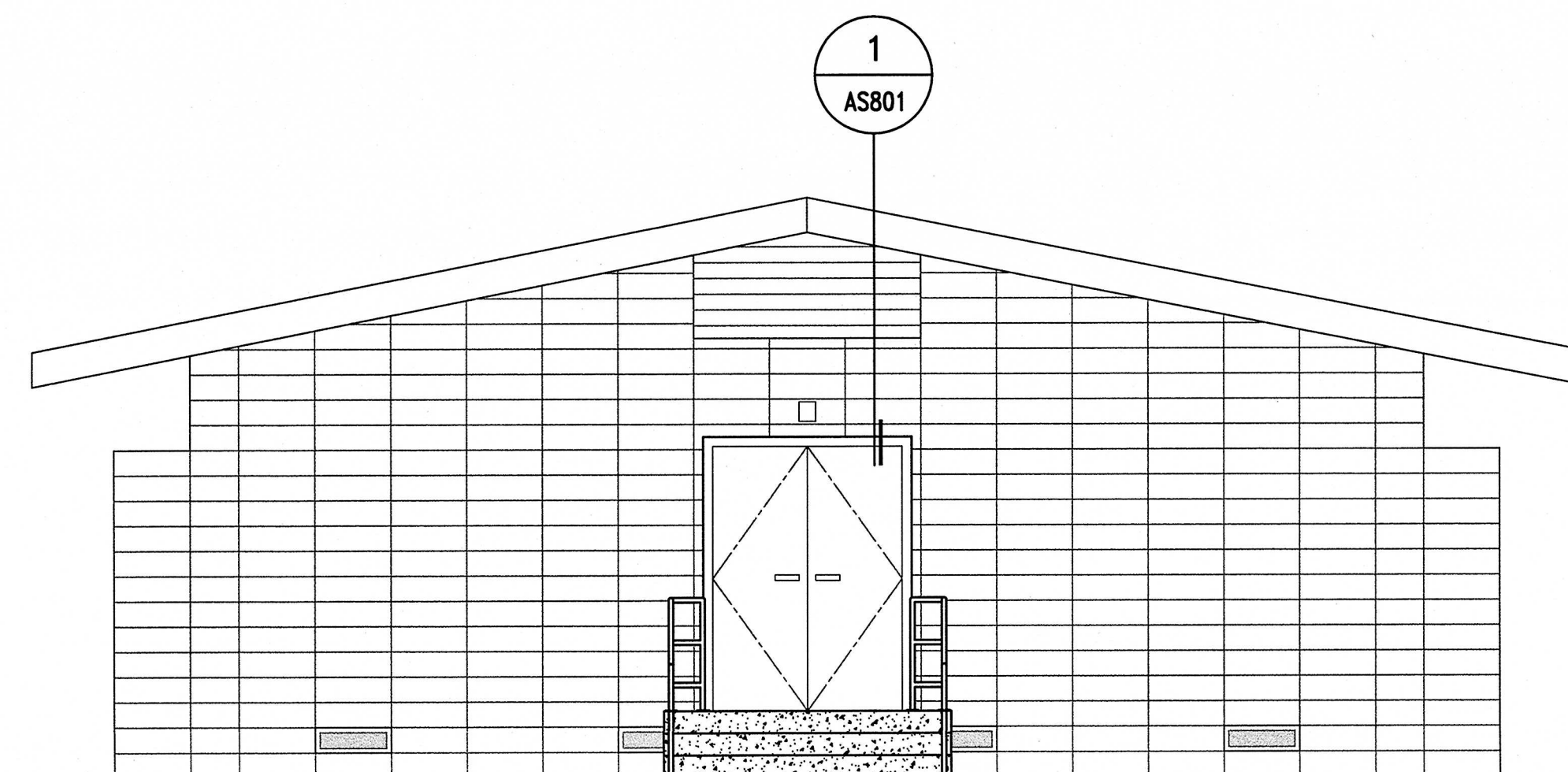


GENERAL NOTES:

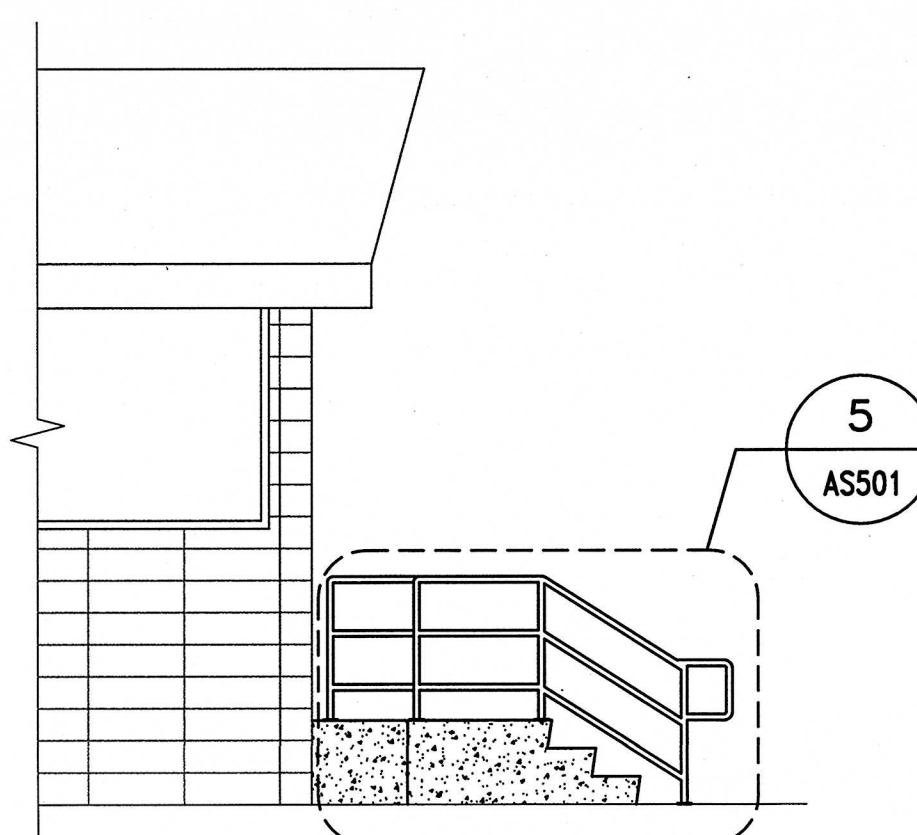
1. MATCH EXISTING ADJACENT BUILDING EXTERIOR FINISHES AND COLOR.
2. THE CONTRACTOR IS RESPONSIBLE FOR CONSTRUCTING A WATERTIGHT FACILITY USING THE MEANS AND METHODS ESTABLISHED BY THE NATIONAL FENESTRATION RATING COUNCIL (NFRCC), THE NATIONAL ROOFING CONTRACTOR'S ASSOCIATION, WESTERN STATES ROOFING CONTRACTOR'S ASSOCIATION AND ANY ADDITIONAL STANDARD PRACTICES, CODES AND REQUIREMENTS AS NECESSARY TO ENSURE A WATERTIGHT FACILITY FREE OF LEAKS. ANY DETAILS PROVIDED HEREIN ARE PROVIDED FOR GENERAL GUIDANCE TO CONVEY THE INTENTION OF THE DESIGN, AND DOES NOT ALLEVIATE THE CONTRACTOR FROM THE RESPONSIBILITY TO PROVIDE A COMPLETELY WATERTIGHT FACILITY. THE CONTRACTOR SHALL PERFORM WATER TESTS TO DEMONSTRATE TO THE SATISFACTION OF THE CONTRACTING OFFICER THAT THE BUILDING DOES NOT LEAK. ANY DEFECTS OR LEAKS SHALL BE IMMEDIATELY REPAIRED AT THE CONTRACTOR'S EXPENSE.
3. CONTRACTOR TO MATCH LANDING AT EXTERIOR STAIR WITH INTERIOR FINISH FLOOR LEVEL. VERIFY IF FLOOR.

SHEET NOTES

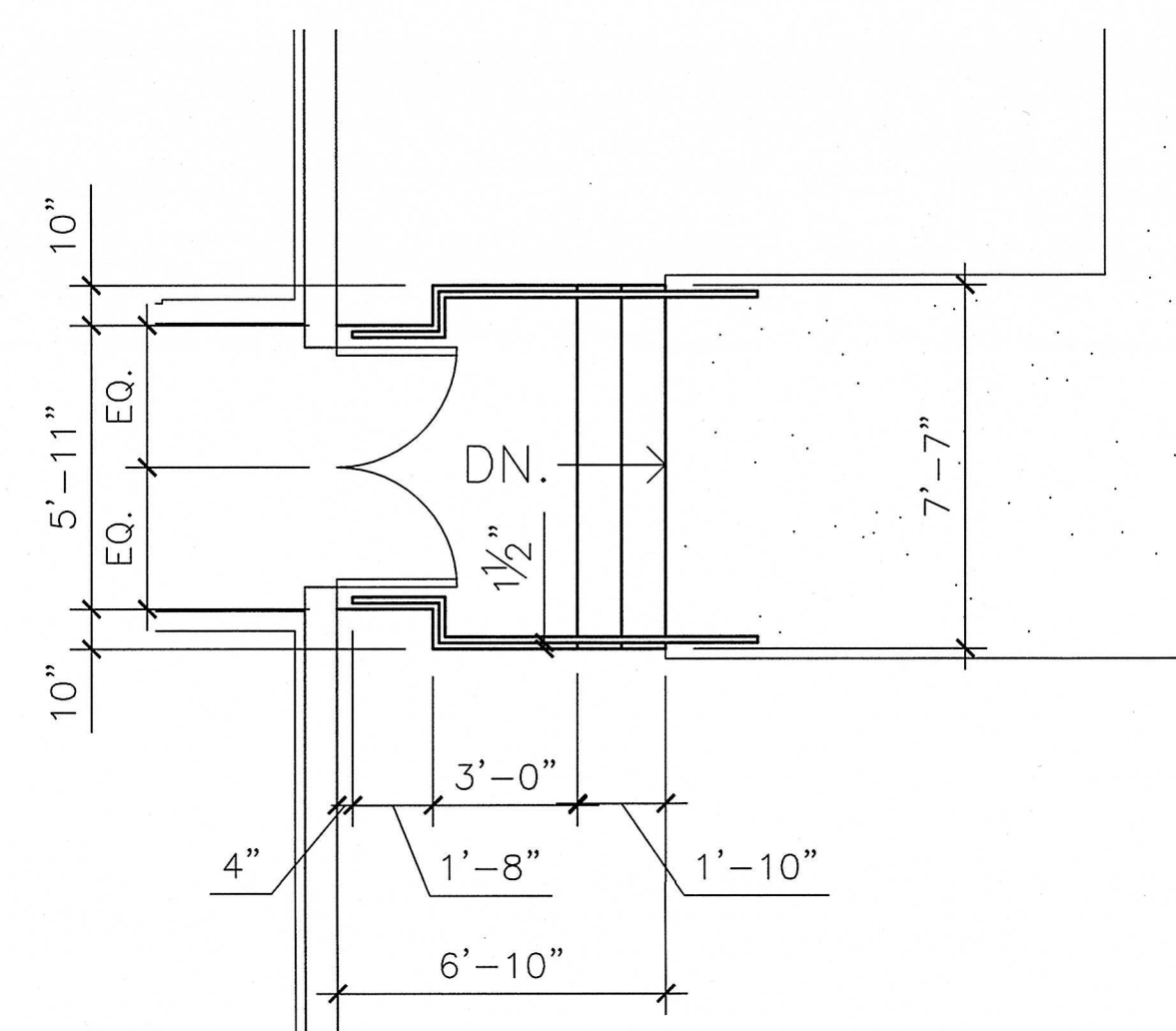
- 1 VERIFY AND MATCH EXISTING FLOOR ELEVATION



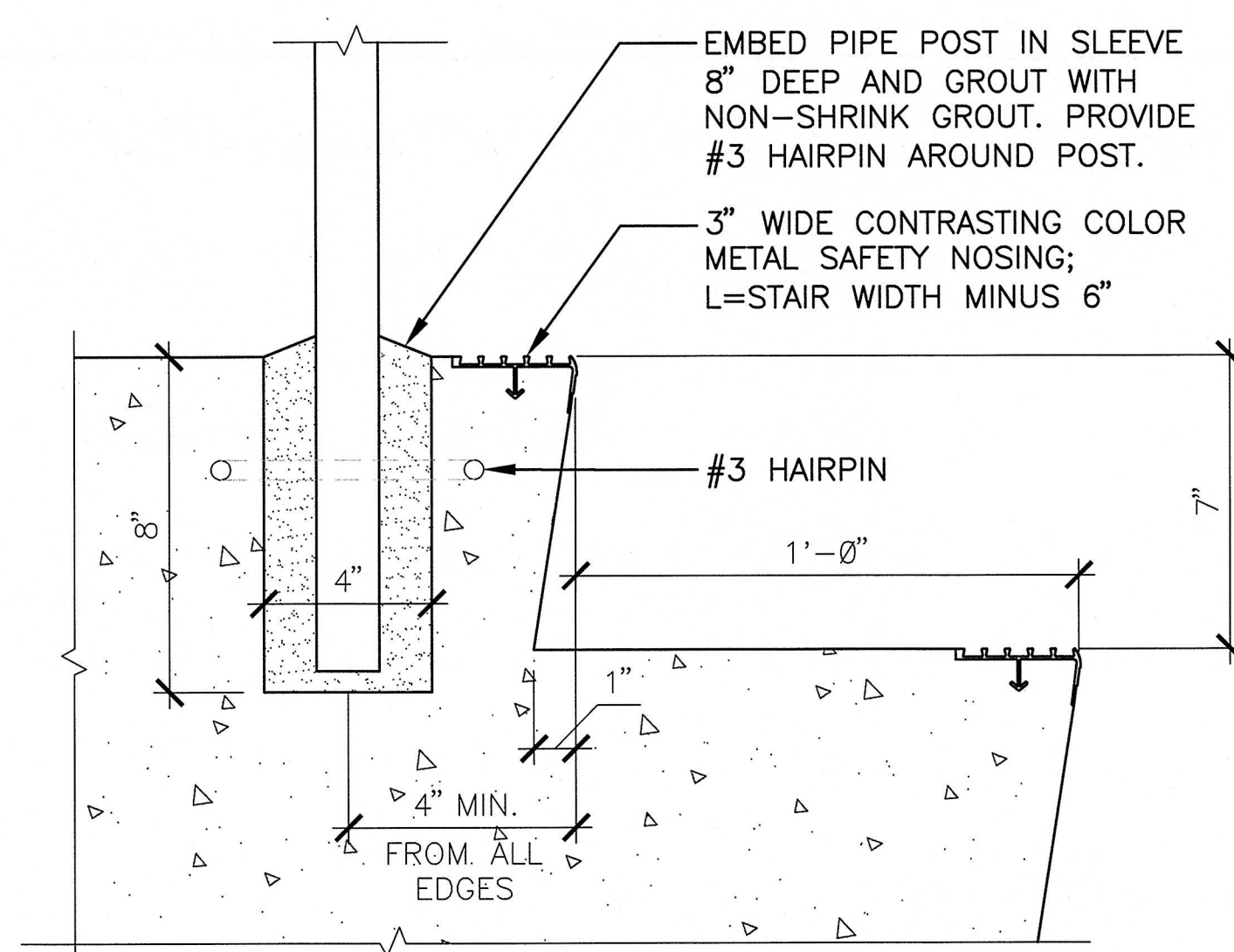
1 NORTH ELEVATION
AS501 SCALE: 1/4"=1'-0"



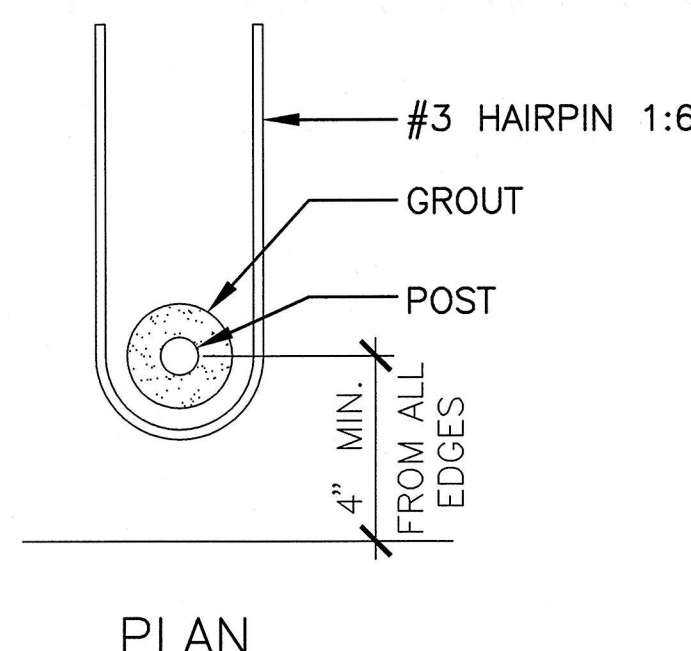
2 PARTIAL WEST ELEVATION
AS501 SCALE: 1/4"=1'-0"



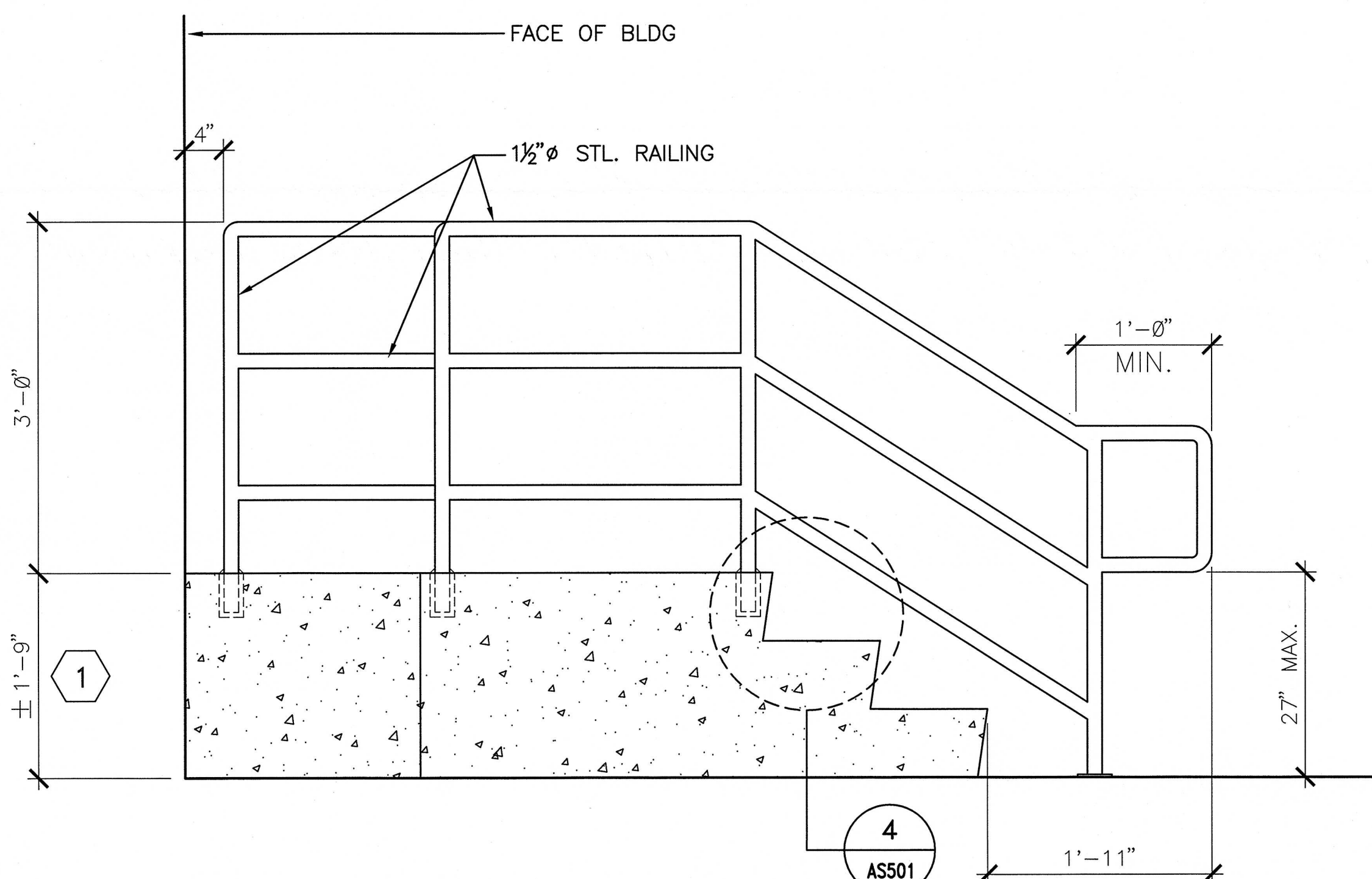
3 PARTIAL ENLARGED STAIR PLAN
AS501 SCALE: 1/4"=1'-0"





4 CONCRETE STAIR SECTION
AS501 SCALE: 3" = 1'-0"



5 GUARDRAIL ENLARGED ELEVATION
 ASS01 SCALE: 1" = 1'-0"



"FULLY SPRINKLERED

		CONSULTANTS:				ARCHITECT/ENGINEERS:				Drawing Title		Project Title		Project Number		Office of Facilities Management	
										EXTERIOR ELEVATIONS AND DETAILS		DESIGN OF BUILD BACK BLDG 88 McCLELLAN		612-12-288			
										Approved: Project Director		Location		Drawing Number		Department of Veterans Affairs	
												McCLELLAN, CA		AS501			
Revisions:		Date:										Date		Checked		Drawn	
												09/12/2012		JR		CM	
																Dwg. 11 of 73	