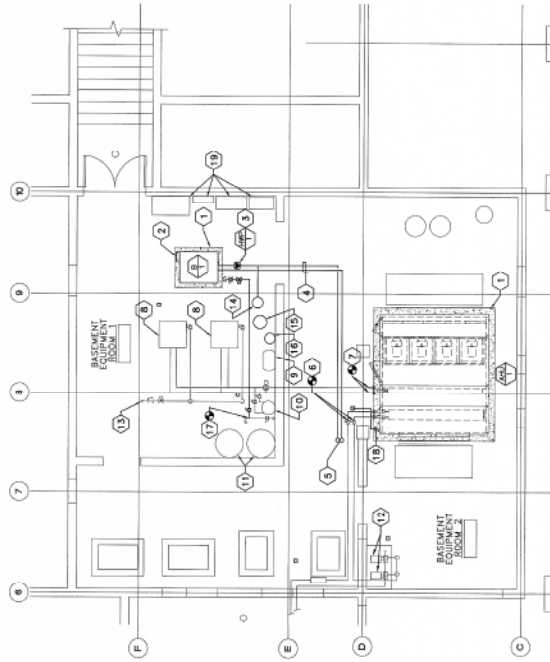




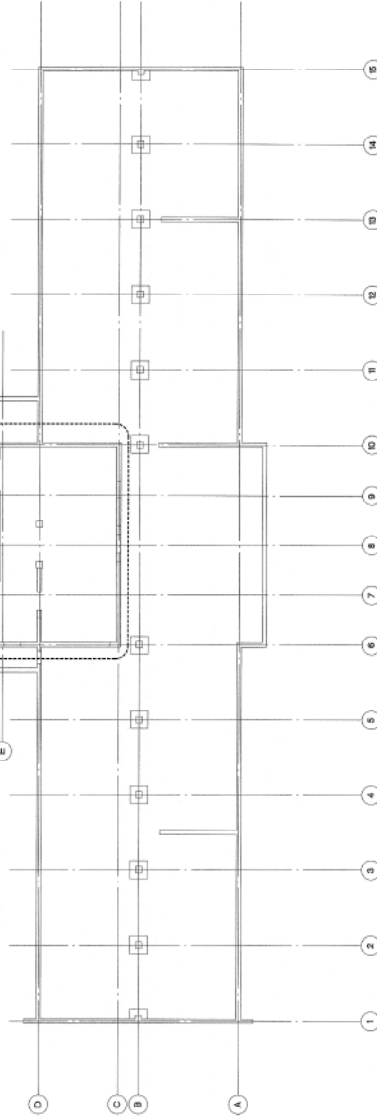
1. COORDINATE FINAL LOCATION OF EXHAUST FANS WITH PLUMBING VENTS, BOILER FLUES, ETC.

- 1 SEE ROOF CURB DETAIL ON MECHANICAL DETAIL SHEETS.
- 2 EXISTING 10" FLUE UP THRU ROOF.
- 3 6" FLUE FOR DOMESTIC WATER HEATERS. PROVIDE CODE COMPLIANT RAIN CAP.
- 4 8" FLUE FOR HEATING WATER BOILER. PROVIDE CODE COMPLIANT RAIN CAP.

VA FORM CB-6231, OCT 1978



ENLARGED MECHANICAL PIPING PLAN
SCALE: 1/2" = 1'-0"



BASEMENT/CRAWL SPACE MECHANICAL PIPING PLAN
SCALE: 1/8" = 1'-0"



GENERAL NOTES

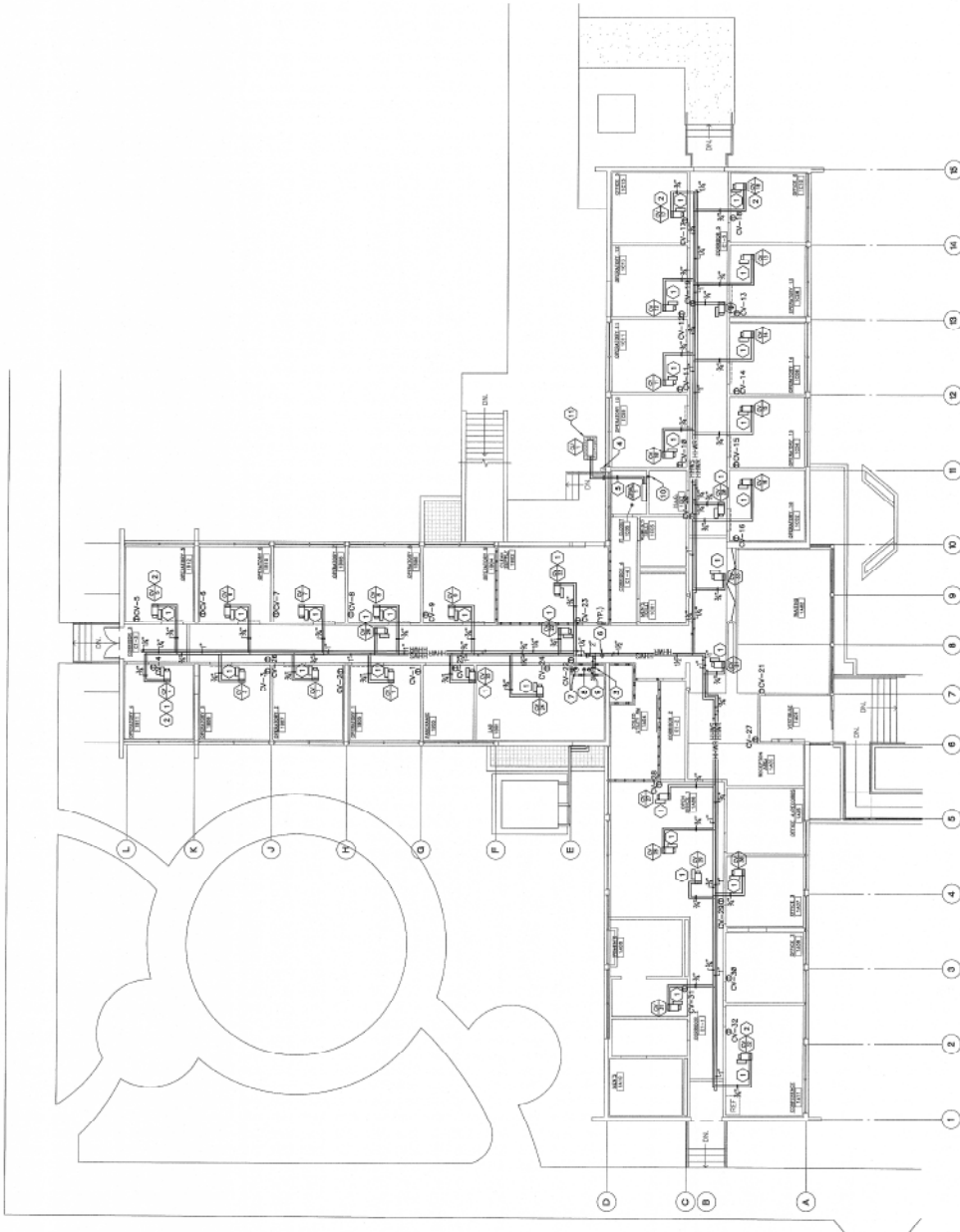
- FOR CHILLED WATER AND HEATING HOT WATER PIPING CONNECTIONS, SEE DETAILS.
- COORDINATE PIPE ROUTING WITH ALL OTHER TRADES TO THE EXTENT POSSIBLE.
- FOR PIPE HANGER SUPPORT, SEE DETAILS.
- PIPE SHALL BE SUPPORTED AS NECESSARY TO PREVENT EXCESSIVE DEFLECTION AND TO ALLOW COORDINATION WITH DUCTWORK.

SHEET NOTES

- 6" CONCRETE PAD. SEE STRUCTURAL DRAWINGS FOR PAD DETAILS.
- BOILER B-1 CONTROL PANEL.
- HEATING HOT WATER CIRCULATING PUMP.
- SEE BOILER PIPING DIAGRAM ON SHEET MHS01.
- 2" HHWS AND 2" HHWR PIPING UP TO FIRST FLOOR. SEE SHEET MH-402 FOR CONTINUATION.
- POINT OF CONNECTION TO EXISTING CHWS AND HHWR PIPING. SEE SHEET MH-402 FOR CONTINUATION.
- POINT OF CONNECTION TO EXISTING HHWS AND HHWR PIPING. EXTEND SAME SIZE PIPING TO NEW AHU-1 HHW COIL CONNECTIONS.
- EXISTING HEATING HOT WATER BOILER.
- EXISTING EXPANSION TANK.
- EXISTING POT FEEDER.
- DOMESTIC WATER HEATERS. SEE PLUMBING DRAWINGS.
- EXISTING CHILLED WATER PUMPS.
- EXISTING 1/2" NATURAL GAS PIPE.
- REF. SEPARATOR. SEE EQUIPMENT SCHEDULES FOR INFORMATION.
- EXPANSION TANK. SEE EQUIPMENT SCHEDULES FOR INFORMATION.
- POT FEEDER. SEE EQUIPMENT SCHEDULES FOR INFORMATION.
- SEE PLUMBING DRAWINGS FOR GAS PIPING TO BOILER B-1.
- SEE PLUMBING DRAWINGS FOR CONDENSATE PIPING TO AIR HANDLING UNIT AHU-1.
- ELECTRICAL PANELS. SEE ELECTRICAL DRAWINGS.

"FULLY SPRINKLERED"

CONSULTANTS:		ARCHITECT/ENGINEERS:		DESIGN OF BUILD BACK BLDG 88 MCLELLAN		Project No. B12-288		Office of Facilities Management	
				Location MCLELLAN, CA		Drawing Number MCC-88		Department of Operations Affairs	
				Approved Project Director		Drawing Number MH-401		Date Dec 4 of 72	
				Checked BRK		Drawn CH			



PROJECT NORTH

FIRST FLOOR MECHANICAL PIPING PLAN

SCALE: 1/8" = 1'-0"

GENERAL NOTES

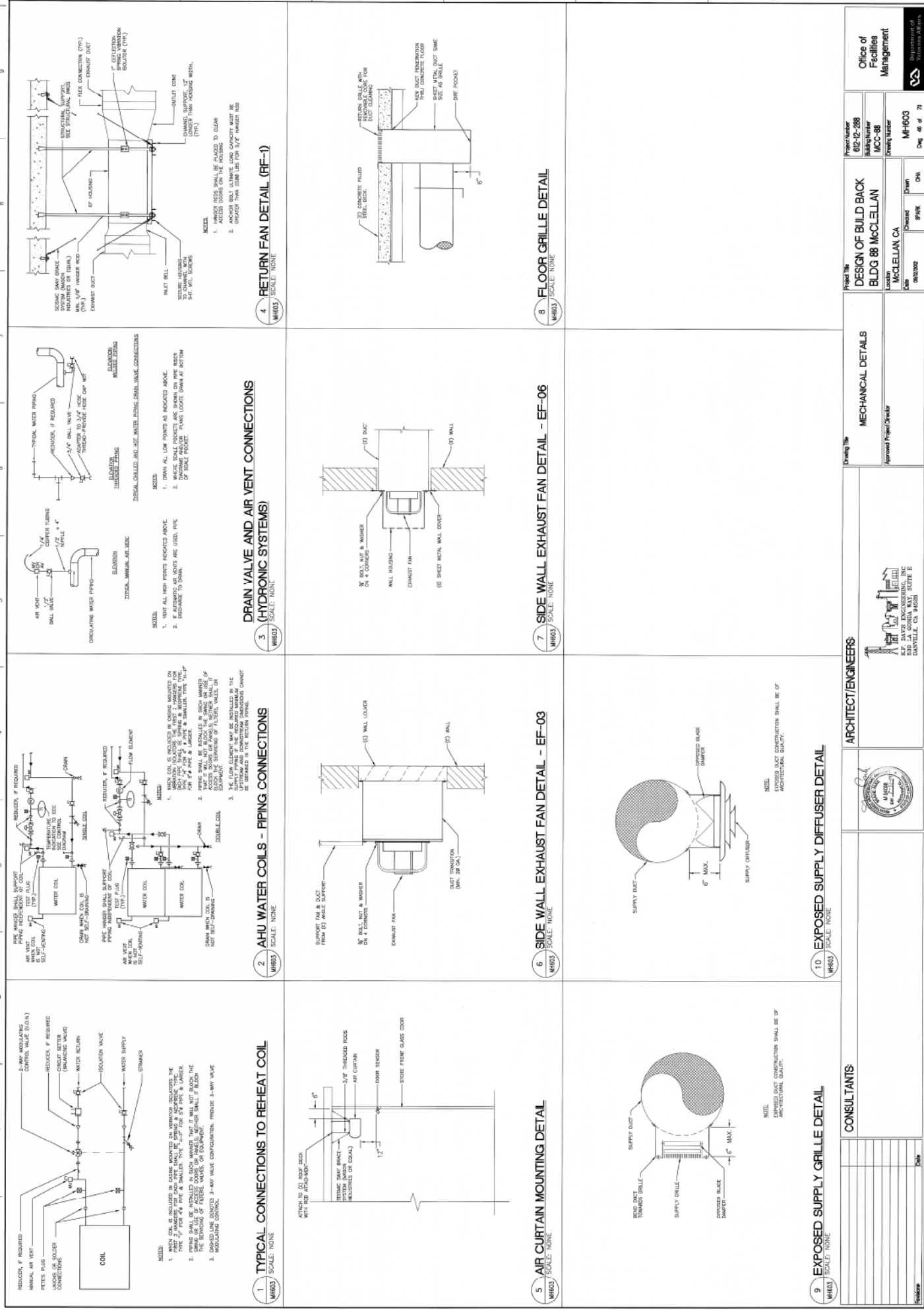
1. FOR HEATING HOT WATER PIPING CONNECTIONS, SEE DETAILS.
2. FOR VAV OR CV INLET SIZES, SEE SCHEDULE SHEET.
3. FOR REHEAT COILS AND DDC CONTROLLERS LOCATED ABOVE CEILING, PROVIDE A MINIMUM 24" X 24" ACCESS PANEL FOR MAINTENANCE.
4. COORDINATE PIPE ROUTING WITH ALL OTHER TRADES TO THE EXTENT POSSIBLE. LOCATE HANGERS AND SUPPORTS AS NEAR AS POSSIBLE TO UNDERSIDE OF STRUCTURE.
5. FOR PIPE HANGER SUPPORT, SEE DETAILS.
6. FOR PIPE HANGER SUPPORT, SEE DETAILS.

SHEET NOTES

1. CLEARANCE ZONE REQUIRED FOR MAINTENANCE TO COIL, VALVES, CONTROLLER, DAMPER, ETC. COORDINATE ACCESS THROUGH ROOF CEILING WITH ARCHITECTURAL REFLECTED CEILING PLAN.
2. PROVIDE 3-WAY CONTROL VALVE.
3. HWS & HWR RISER DOWN TO BASEMENT TO BOILER B-1.
4. EXISTING DOWNSPOUT.
5. REFRIGERANT PIPING, SEE EQUIPMENT SCHEDULES FOR SIZES.
6. CIRCUIT SETTER, BALANCE TO FLOW RATES ON EQUIPMENT SCHEDULES.
7. EXISTING 10" FLUE UP THRU ROOF.
8. 6" FLUE FOR DOMESTIC WATER HEATERS.
9. 6" FLUE FOR HEATING WATER BOILER.
10. 5/8" CONDENSATE DRAIN THRU WALL AND TERMINATE AT 12" ABOVE MOP SINK.
11. 4" HIGH CONCRETE PAD.

'FULLY SPRINKLERED'

CONSULTANTS:		ARCHITECT/ENGINEERS		DESIGN OF BUILD BACK		Office of Facilities Management	
Project Title DESIGN OF BUILD BACK		Project Number 012-12-288		Building Number MCC-88		Drawing Number MH4002	
Location BLDG 88 MCLELLAN		Date 08/20/08		Checked SPARK		Drawn CHA	
Approved Project Director		McLELLAN CA		McLELLAN CA		Department of Veterans Affairs	



CONSULTANTS		ARCHITECT/ENGINEERS		MECHANICAL DETAILS		DESIGN OF BUILD BACK		Project Number		Office of Facilities Management	
R.F. JAMES ENGINEERING, INC. 1400 S. 10TH AVENUE, SUITE B DANVILLE, CA 94505		R.F. JAMES ENGINEERING, INC. 1400 S. 10TH AVENUE, SUITE B DANVILLE, CA 94505		Approved Project Director		McLELLAN CA		892-02-288		McLellan	
Scale: NONE		Scale: NONE		Scale: NONE		Scale: NONE		Scale: NONE		Scale: NONE	
Date		Date		Date		Date		Date		Date	
1		2		3		4		5		6	
7		8		9		10		11		12	
13		14		15		16		17		18	
19		20		21		22		23		24	
25		26		27		28		29		30	
31		32		33		34		35		36	
37		38		39		40		41		42	
43		44		45		46		47		48	
49		50		51		52		53		54	
55		56		57		58		59		60	
61		62		63		64		65		66	
67		68		69		70		71		72	
73		74		75		76		77		78	
79		80		81		82		83		84	
85		86		87		88		89		90	
91		92		93		94		95		96	
97		98		99		100		101		102	
103		104		105		106		107		108	
109		110		111		112		113		114	
115		116		117		118		119		120	
121		122		123		124		125		126	
127		128		129		130		131		132	
133		134		135		136		137		138	
139		140		141		142		143		144	
145		146		147		148		149		150	
151		152		153		154		155		156	
157		158		159		160		161		162	
163		164		165		166		167		168	
169		170		171		172		173		174	
175		176		177		178		179		180	
181		182		183		184		185		186	
187		188		189		190		191		192	
193		194		195		196		197		198	
199		200		201		202		203		204	
205		206		207		208		209		210	
211		212		213		214		215		216	
217		218		219		220		221		222	
223		224		225		226		227		228	
229		230		231		232		233		234	
235		236		237		238		239		240	
241		242		243		244		245		246	
247		248		249		250		251		252	
253		254		255		256		257		258	
259		260		261		262		263		264	
265		266		267		268		269		270	
271		272		273		274		275		276	
277		278		279		280		281		282	
283		284		285		286		287		288	
289		290		291		292		293		294	
295		296		297		298		299		300	
301		302		303		304		305		306	
307		308		309		310		311		312	
313		314		315		316		317		318	
319		320		321		322		323		324	
325		326		327		328		329		330	
331		332		333		334		335		336	
337		338		339		340		341		342	
343		344		345		346		347		348	
349		350		351		352		353		354	
355		356		357		358		359		360	
361		362		363		364		365		366	
367		368		369		370		371		372	
373		374		375		376		377		378	
379		380		381		382		383		384	
385		386		387		388		389		390	
391		392		393		394		395		396	
397		398		399		400		401		402	
403		404		405		406		407		408	
409		410		411		412		413		414	
415		416		417		418		419		420	
421		422		423		424		425		426	
427		428		429		430		431		432	
433		434		435		436		437		438	
439		440		441		442		443		444	
445		446		447		448		449		450	
451		452		453		454		455		456	
457		458		459		460		461		462	
463		464		465		466		467		468	
469		470		471		472		473		474	
475		476		477		478		479		480	
481		482		483		484		485		486	
487		488		489		490		491		492	
493		494		495		496		497		498	
499		500		501		502		503		504	
505		506		507		508		509		510	
511		512		513		514		515		516	
517		518		519		520		521		522	
523		524		525		526		527		528	
529		530		531		532		533		534	
535		536		537		538		539		540	
541		542		543		544		545		546	
547		548		549		550		551		552	
553		554		555		556		557		558	
559		560		561		562		563		564	
565		566		567		568		569		570	
571		572		573		574		575		576	
577		578		579		580		581		582	
583		584		585		586		587		588	
589		590		591		592		593		594	
595		596		597		598		599		600	
601		602		603		604		605		606	
607		608		609		610		611		612	
613		614		615		616		617		618	
619		620		621		622		623		624	
625		626		627		628		629		630	
631		632		633		634		635		636	
637		638		639		640		641		642	
643		644		645		646		647		648	
649		650		651		652		653		654	
655		656		657		658		659		660	
661		662		663		664		665		666	
667		668		669		670		671		672	
673		674		675		676		677		678	
679		680		681		682		683		684	
685		686		687		688		689		690	
691		692		693		694		695		696	
697		698		699		700		701		702	
703		704		705		706		707		708	
709		710		711		712		713		714	
715		716		717		718		719		720	
721		722		723		724		725		726	
727		728		729		730		731		732	
733		734		735		736		737		738	
739		740		741		742		743		744	
745		746		747		748		749		750	
751		752		753		754		755		756	
757		758		759		760		761		762	
763		764		765		766		767		768	
769		770		771		772		773		774	
775		776		777		778		779		780	
781		782		783		784		785		786	
787		788		789		790		791		792	
793		794		795		796		797		798	
799		800		801		802		803		804	
805		806		807		808		809		810	
811		812		813		814		815		816	
817		818		819		820		821		822	
823		824		825		826		827		828	
829		830		831		832		833		834	
835		836		837		838		839		840	
841		842		843		844		845		846	
847		848		849		850		851		852	
853		854		855		856		857		858	
859		860		861		862		863		864	
865		866		867		868		869		870	
871		872		873		874		875		876	
877		878		879		880		881		882	
883		884		885		886		887		888	
889		890		891		892		893		894	
895		896		897		898		899		900	
901		902		903		904		905		906	
907		908		909		910		911		912	
913		914		915		916		917		918	
919		920		921		922		923		924	
925		926		927		928		929		930	
931		932		933		934		935		936	
937		938		939		940		941		942	
943		944		945		946		947		948	
949		950		951		952		953		954	
955		956		957		958		959		960	
961		962		963		964		965		966	
967		968		969		970		971		972	
973		974		975		976		977		978	
979		980		981		982		983		984	
985		986		987		988		989		990	
991		992		993		994		995		996	
997		998		999		1000		1001		1002	
1003		1004		1005		1006		1007		1008	
1009		1010		1011		1012		1013		1014	
1015		1016		1017		1018		1019		1020	
1021		1022		1023		1024		1025		1026	
1027		1028		1029		1030		1031		1032	
1033		1034		1035		1036		1			