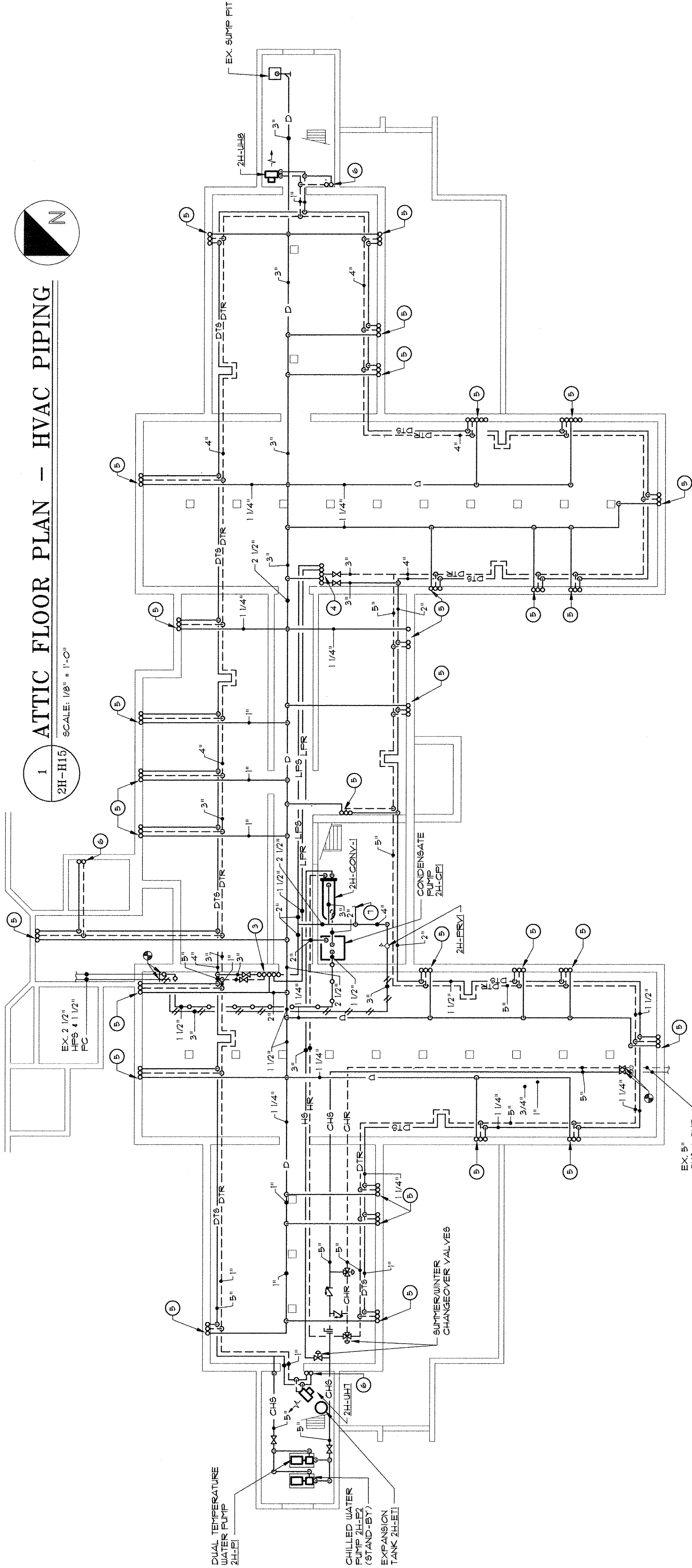


1 ATTIC FLOOR PLAN - HVAC PIPING
SCALE: 1/8" = 1'-0"



2 CRAWL SPACE PLAN - HVAC PIPING
SCALE: 1/8" = 1'-0"

GENERAL NOTES:

1. PROVIDE SHUT OFF VALVES ON DTS & DTR RUNOUTS TO FAN COIL UNITS AND UNIT HEATERS.
2. PIPING PENETRATIONS THROUGH ATTIC FLOOR SHALL BE PROVIDED WITH A 4" HIGH CONCRETE CURB.
3. PROVIDE DRIP TRAP AT THE BASE OF EACH LPS RISER. SEE DETAIL ON SHEET 14-H21.

DRAWING NOTES:

1. 3" DTS, 3" DTR, 1 1/4" D, 1 1/2" LPR, 4 2" LPS DN.
2. 1 1/2" LPR, 2" LPS, 3" DTS, 3" DTR, 1 1/4" D DN.
3. 3" DTS, 2" D, 3" DTR, 1 1/2" LPR, 4 2" LPS UP.
4. 3" DTS, 2" D, 3" DTR, 1 1/2" LPR, 4 2" LPS UP.
5. PIPING UP TO FAN COIL UNIT. SEE SCHEDULE FOR RUNOUT SIZES.
6. PIPING UP TO UNIT HEATER. SEE SCHEDULE FOR RUNOUT SIZES.
7. PROVIDE 2 1/2" LPS (8") TO EX. INSTANTANEOUS HOT WATER REHEATER. SEE PIPING DRAWINGS FOR PIPING CONNECTION DETAILS.

	Planning Architecture Engineering Prochaska & Associates Interiors & Facility Management 1220 Quaker Lane, Suite 400, Maryland 21041-2041 (410) 883-4441 Fax: (410) 883-4441	Project Title ATTIC & CRAWL SPACE PLANS - HVAC PIPING	Project No. 641-95-114	Date 23 FEB. 1996		Burdette, Koehler, Murphy & Associates, Inc. CONSULTING ENGINEERS 900 THE QUADRANGLE VILLAGE OF CROSS KEYS BALTIMORE, MD 21210 (410) 323-1000		REVISIONS FOR TWO-PHASE FAN COIL UNITS 10/16/96 Date