

A

B

C

D

E

F

1

2

3

4

5

6

7

8

9

A

B

C

D

E

F

1

three sixteenths = one foot

one and one half inches = one foot

one inch = one foot

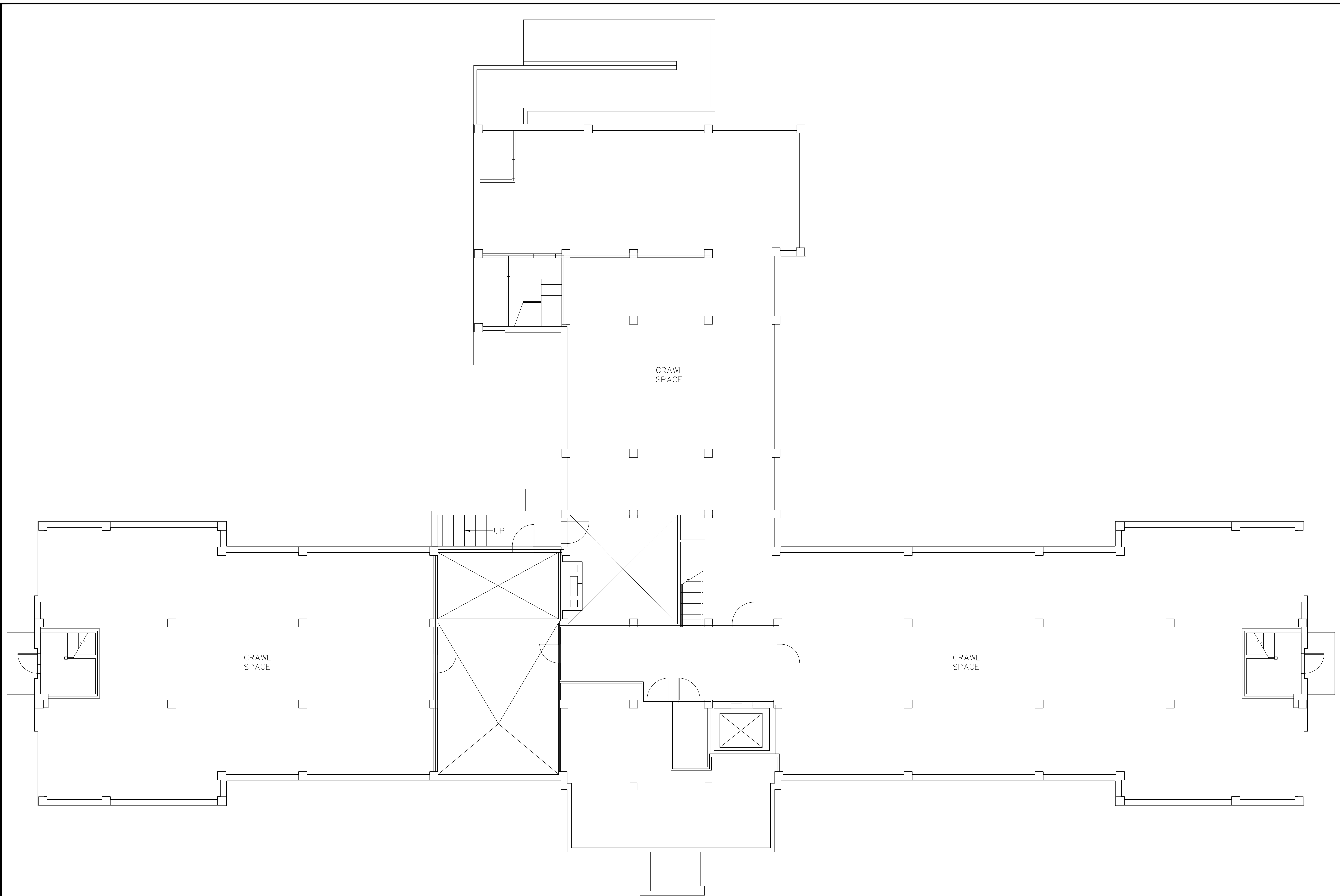
three quarters inch = one foot

one half inch = one foot

three eighths inch = one foot

one quarter inch = one foot

one eighth inch = one foot



Revisions		Date	Professional Seal		Drawing Title BASEMENT FLOOR PLAN ARCHITECTURAL		Project Title AS-BUILT Drawings		Date 03-03-2005				VA Department of Veterans Affairs			
					Approved:		Building Number 82H		Checked	Drawn					Project No.	
					Approved:		Location VAMC PERRYPOINT MARYLAND								Drawing No.	