

CODED NOTES

- 1

EXISTING DOOR WITH EXISTING CARD READER, DOOR CONTACTS, MAGNETIC LOCK, AND REQUEST TO OPEN DEVICE. REPLACE EXISTING DEVICES AND HARDWARE WITH NEW DEVICES COMPATIBLE WITH NEW PACS SYSTEM.
- 2

EXISTING DOOR WITHOUT ELECTRONIC SECURITY OR ACCESS CONTROL. INSTALL NEW DOOR CONTACTS, CARD READER, MAG-LOCK AND RTO DEVICE ON SECURE SIDE. TIE IN TO FIRE ALARM FOR RELEASE UPON ACTIVATION OF FIRE ALARM.
- 3

EXISTING IT DATA CLOSET WITH INTRUSION DETECTION SYSTEM INCLUDING KEYPAD ON OUTSIDE OF ROOM AND MOTION SENSORS WITHIN ROOM. PROVIDE NEW INTRUSION DETECTION AND ACCESS CONTROLS INCLUDING KEYPAD, DOOR CONTACT, CARD READER, ELECTRONIC STRIKE.
- 4

EXISTING PANIC ALARM (DURESS) TO BE REPLACED WITH NEW PANIC DEVICE COMPATIBLE WITH NEW SYSTEM
- 5

EXISTING DOOR WITHOUT ELECTRONIC SECURITY OR ACCESS CONTROL. INSTALL NEW DOOR CONTACTS, CARD READER, ELECTRIC STRIKE. PREP/ALTER DOOR FRAME AS NECESSARY
- 6

EXISTING PHARMACY SUITE CONTROLLED BY LOCAL INTRUSION DETECTION AND ACCESS CONTROL SYSTEM. REPLACE IN IT'S ENTIRETY.
- 7

ROOM TO BE CONVERTED TO LOW VOLTAGE ENGINEERING CLOSET. REMOVE ALL FLOORING AND FINISHES, PLACE 3/4"FTOT ON ALL WALLS AND PROVIDE 3 DEDICATED 20A 120V CIRCUITS TO SUPPORT NEW PACS & SECURITY EQUIPMENT. SUBMIT EXACT LAYOUT WITH SHOP DRAWINGS.

GENERAL NOTES

1. THE INTENT OF THE DRAWINGS PROVIDED ARE TO IDENTIFY THE QUANTITIES AND LOCATIONS OF EXISTING DEVICES AND HARDWARE AND ALSO TO IDENTIFY LOCATIONS THAT DO NOT CURRENTLY HAVE ACCESS CONTROL, PANIC ALARM, OR INTRUSION DETECTION. ANY ADDITIONAL HARDWARE, WIRING OR DEVICES NECESSARY TO REPLACE THIS SYSTEM SHALL BE THE CONTRACTOR'S RESPONSIBILITY TO INCLUDE WITHIN BID.
2. THE OVERALL SYSTEM LAYOUT AND DESIGN SHALL BE PREPARE BY THE CONTRACTOR AND SUBMITTED AS PART OF THE PHASING AND SHOP DRAWING PROCESSES.
3. EXISTING ACCESS CONTROL, INTRUSION DETECTION, AND PANIC ALARM SYSTEMS SHALL BE REMOVED ENTIRELY UPON COMPLETION OF PROJECT. IT IS EXPECTED THAT ALL WIRING SHALL BE NEW.
4. DOORS WITH AUTOMATIC OPENERS SHALL BE INTEGRATED WITH NEW SYSTEMS.
5. FINAL PRODUCT SHALL BE COMPLIANT WITH VA DIRECTIVE 0730, HOMELAND SECURITY PRESIDENTIAL DIRECTIVE 12 (HSPD-12), AND FIPS 201. REFER TO SPECIFICATION FOR OTHER GOVERNING REQUIREMENTS.
6. REFER TO VA PHYSICAL SECURITY DESIGN MANUAL FOR SPECIFIC DOOR OPENING REQUIREMENTS. THIS INFORMATION CAN BE FOUND AT WWW.CFM.VA.GOV/TL/PHYSICALSECURITY/DMPHYSECMC_04.PDF

INFECTION CONTROL REQUIREMENTS

- THE FOLLOWING REQUIREMENTS SHALL APPLY TO ALL ASPECTS OF THIS PROJECT. AREAS WILL BE ENCOUNTERED THAT WILL DICTATE ADDITIONAL MEASURES ABOVE THESE REQUIREMENT AND OTHER AREAS BELOW THESE REQUIREMENTS.
1. REMOVE OR ISOLATE HVAC SYSTEM IN AREA WHERE WORK IS BEING DONE TO PREVENT CONTAMINATION OF DUCT SYSTEM.

2. COMPLETE ALL CRITICAL BARRIERS TO SEAL AREA FROM NON-WORK AREAS OR IMPLEMENT CONTROL CUBE METHOD (WITH HEPA VAC) BEFORE CONSTRUCTION BEGINS.

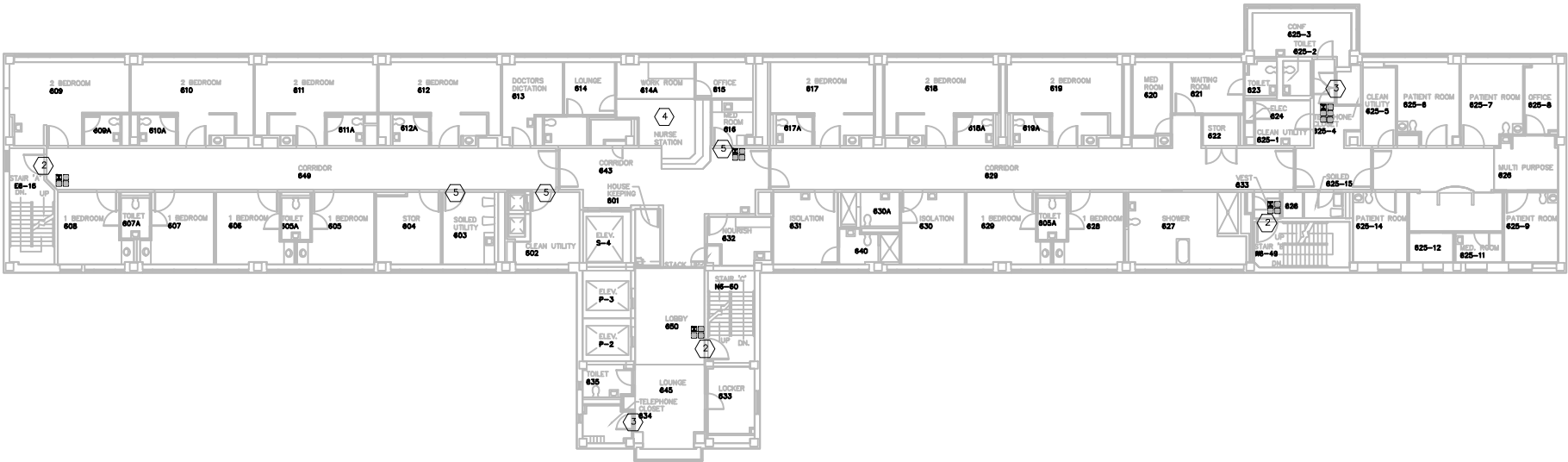
3. MAINTAIN NEGATIVE AIR PRESSURE WITHIN WORK SITE UTILIZING HEPA EQUIPPED AIR FILTRATION UNITS.

4. CONTAIN CONSTRUCTION WASTE BEFORE TRANSPORT IN TIGHTLY COVERED CONTAINERS.

5. COVER TRANSPORT RECEPTACLES OR CARTS.

6. PLACE STICKY MATS OUTSIDE ALL WORK AREAS.

7. OBTAIN ICRA PERMIT BEFORE THE START OF WORK IN ANY AREA.



SIXTH FLOOR
SCALE: 3/32" = 1'-0"

CONSULTANTS:

Drawing Title

SIXTH FLOOR

Approved Project Director

Project Title

SECURITY + ACCESS
CONTROL UPGRADE

Location

135 E 38TH STREET ERIE, PA

Date

1/12/13

Checked

FMS

Drawn

FMS

Project Number

562-13-104

Building Number

ALL

Drawing Number

E-7
Dwg. of

Office of
Construction
and Facilities
Management



Department of
Veterans Affairs