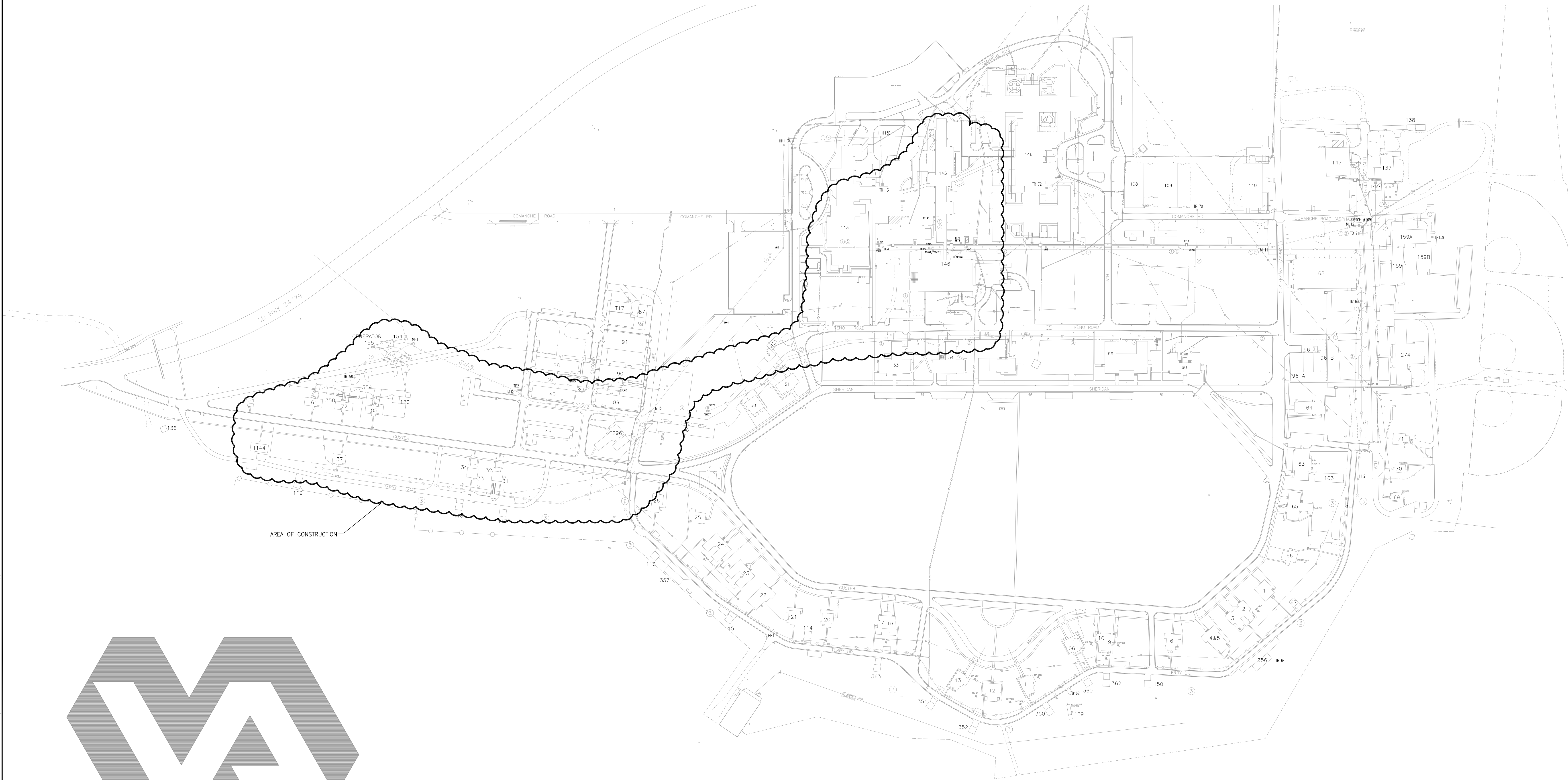


UPGRADE FIBER BACKBONE

PROJECT NO. 568-13-113



V.A. MEDICAL CENTER

FT. MEADE, S.D.

SHEET INDEX	
E-001	OVERALL SITE PLAN
E-101	BUILDING 89, 144, 154 - ELECTRICAL PLANS
E-102	BUILDING 145 CRAWL SPACE - ELECTRICAL PLAN
E-103	BUILDING 113 BASEMENT LEVEL - ELECTRICAL PLAN
ES101	ELECTRICAL SITE PLAN - WEST
ES102	ELECTRICAL SITE PLAN - EAST
E-601	RISER DIAGRAMS


PLAN NORTH
F1 OVERALL SITE PLAN
SCALE: 1" = 150'-0"

Revisions	Date

CONSULTANTS:



ARCHITECT/ENGINEERS:



TSP, Inc.
1112 N. West Ave.
Sioux Falls, SD 57104
phone: (605) 336-1160
fax: (605) 336-7926
www.teamtsp.com
TSP PROJECT #04121145

To Solve. To Excel. Together.

Drawing Title OVERALL SITE PLAN
Approved Project Director

Project Title UPGRADE FIBER BACKBONE
Location FORT MEADE, SD
Date 02-01-13
Checked DLB
Drawn JNK

Project Number 568-13-113
Building Number CAMPUS
Drawing Number E-001
Dwg 1 of 7

Office of
Construction
and Facilities
Management



three inches = one foot
one and one half inches = one foot
one inch = one foot
three quarters inch = one foot
one half inch = one foot
three eighths inch = one foot
one quarter inch = one foot
one eighth inch = one foot

6:\2012_04\121145 Dept of VA\23 Upgrade Fiber Backbone\Drawings\Electrical+E-101.dwg 2-04-13 10:01:13 AM kennedyjn

VA FORM 08-6231

CONSULTANTS:

ARCHITECT/ENGINEERS:



TSP, Inc.
1112 N. West Ave.
Sioux Falls, SD 57104
phone: (605) 336-1160
fax: (605) 336-7926
www.teamtsp.com
TSP PROJECT #04121145

Drawing Title
BUILDING 89, 144, 154 - ELECTRICAL
PLANS

Approved Project Director

Project Title
UPGRADE FIBER BACKBONE

Location
FORT MEADE, SD

Date
02-01-13

Checked
DLB

Drawn
JNK

Project Number
568-13-113

Building Number
89, T144, 154

Drawing Number
E-101

Dwg. 2 of 7

Office of
Construction
and Facilities
Management



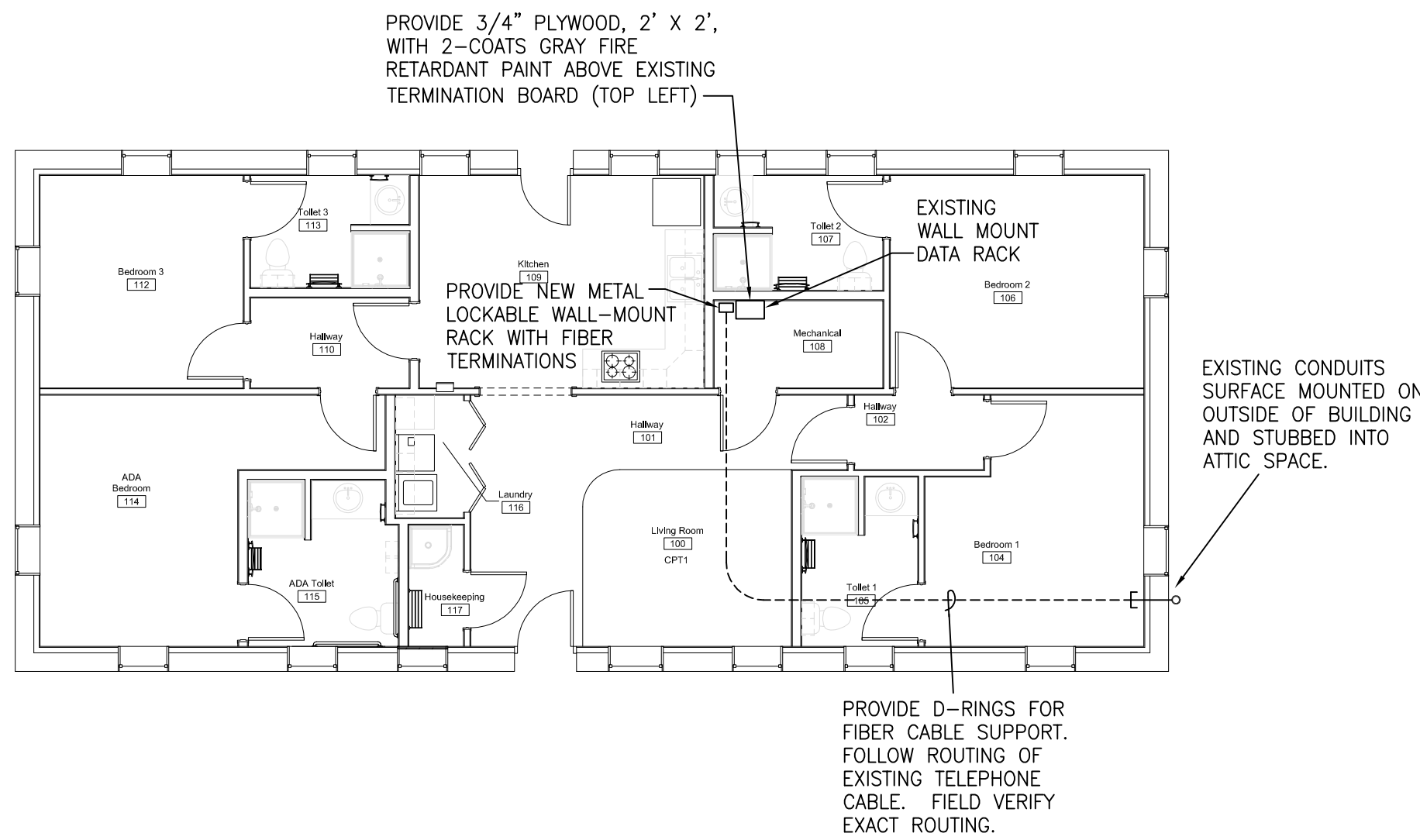
SHEET GENERAL NOTES

- A. INTERCONNECTS BY OWNER. PATCH CORDS PROVIDED BY ELECTRICAL CONTRACTOR, INSTALLED BY OWNER.
B. ALSO SEE RISER DIAGRAMS ON E-601.

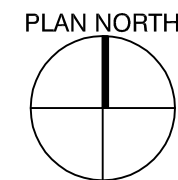
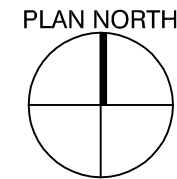
SHEET KEYNOTES

1. PROVIDE NEW 6-INCH WIDE BY 3-INCH DEEP CABLE TRAY.

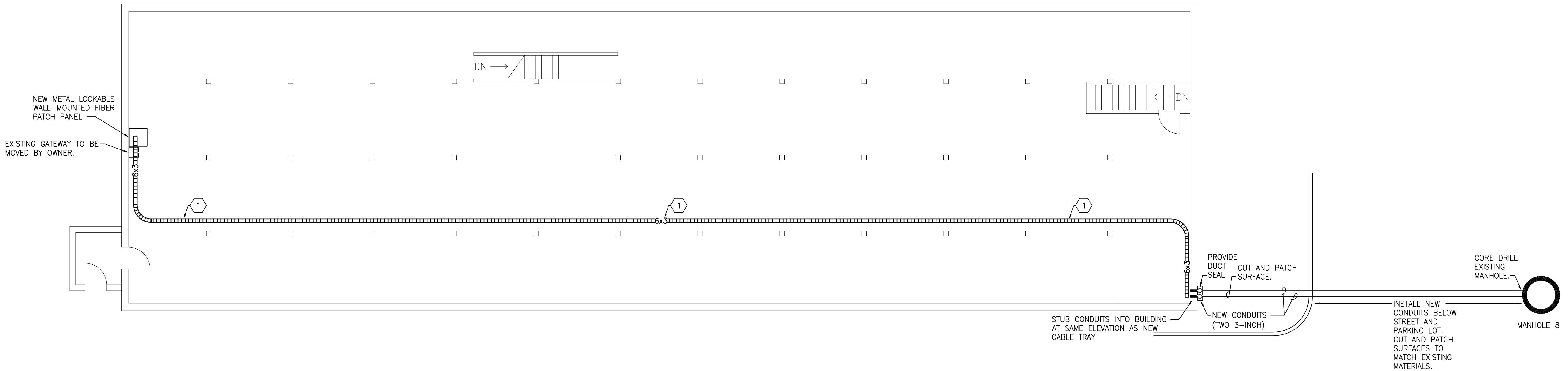
3B BUILDING 144 ELECTRICAL PLAN
SCALE: 1/8" = 1'-0"



6B BUILDING 154 ELECTRICAL PLAN
SCALE: 1/8" = 1'-0"



1D BUILDING 89 ATTIC ELECTRICAL PLAN
SCALE: 1/8" = 1'-0"

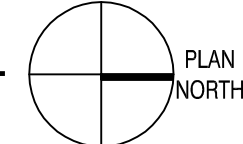


three inches = one foot
one and one half inches = one foot
one inch = one foot
three quarters inch = one foot
one half inch = one foot
three eighths inch = one foot
one quarter inch = one foot
one eighth inch = one foot

6:\2012\04121145 Dept of VA\02 Upgrade Fiber Backbone\02-Drawings\Electrical\1F-102.dwg 2-04-13 10:15:04 AM kenedyjn

1F BUILDING 145 CRAWL SPACE - ELECTRICAL PLAN

SCALE: 1/8" = 1'-0"



Revisions:	Date

CONSULTANTS:



ARCHITECT/ENGINEERS:



TSP, Inc.
1112 N. West Ave.
Sioux Falls, SD 57104
phone: (605) 336-1160
fax: (605) 336-7926
www.teamtsp.com
TSP PROJECT #04121145

Drawing Title
BUILDING 145 CRAWL SPACE -
ELECTRICAL PLAN

Approved Project Director

Project Title
UPGRADE FIBER BACKBONE

Location
FORT MEADE, SD

Date
02-01-13

Checked
DLB

Drawn
JNK

Project Number
568-13-113

Building Number
145

Drawing Number
E-102

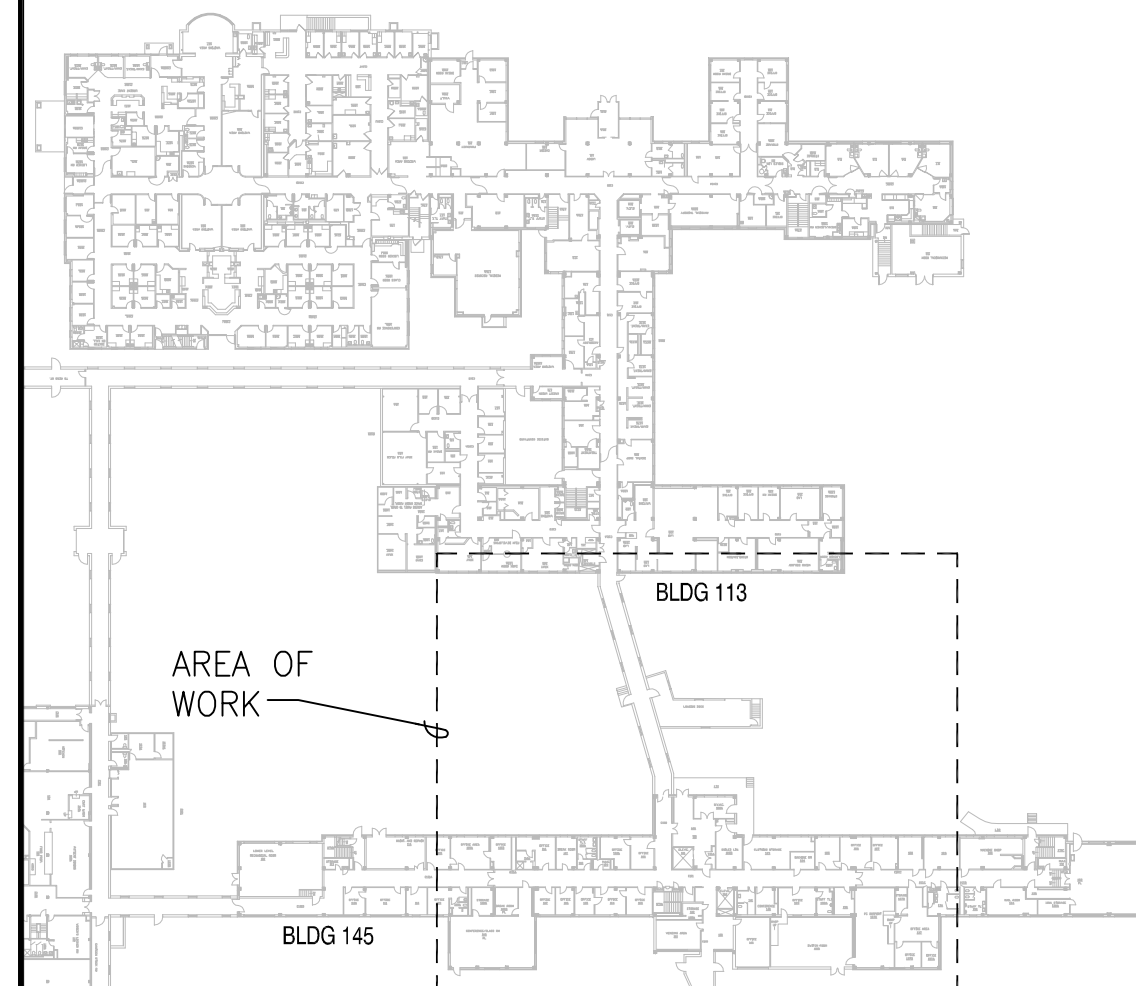
Dwg 3 of 7

Office of
Construction
and Facilities
Management



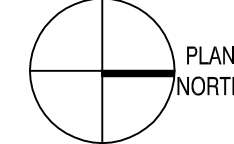
SHEET GENERAL NOTES

- A. INTERCONNECTS BY OWNER. PATCH CORDS PROVIDED BY ELECTRICAL CONTRACTOR, INSTALLED BY OWNER.
- B. ALSO SEE RISER DIAGRAMS ON E-601.



9F KEY PLAN

SCALE: NO SCALE



three inches = one foot

one and one half inches = one foot

one inch = one foot

three quarters inch = one foot

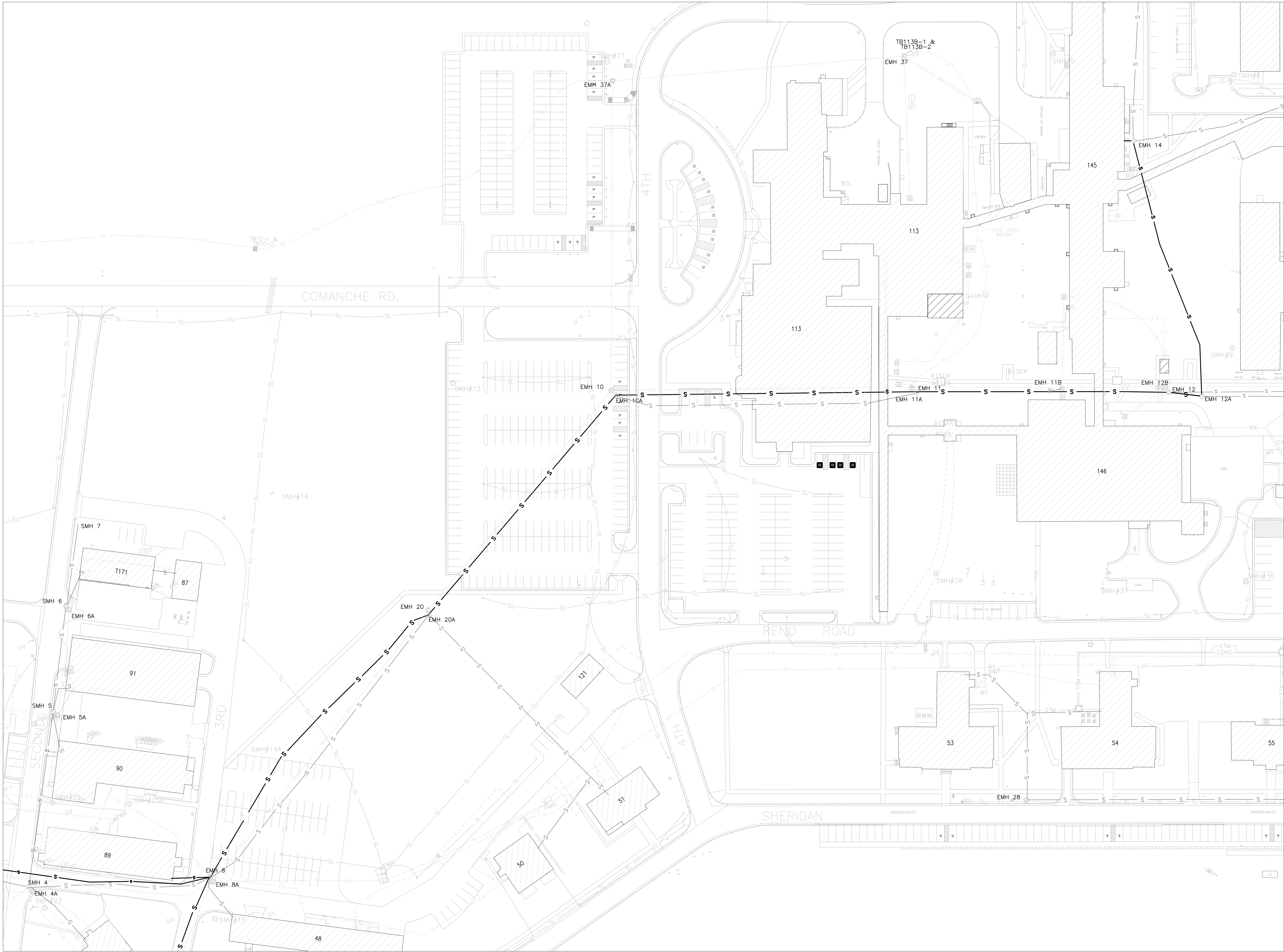
one half inch = one foot

three eighths inch = one foot

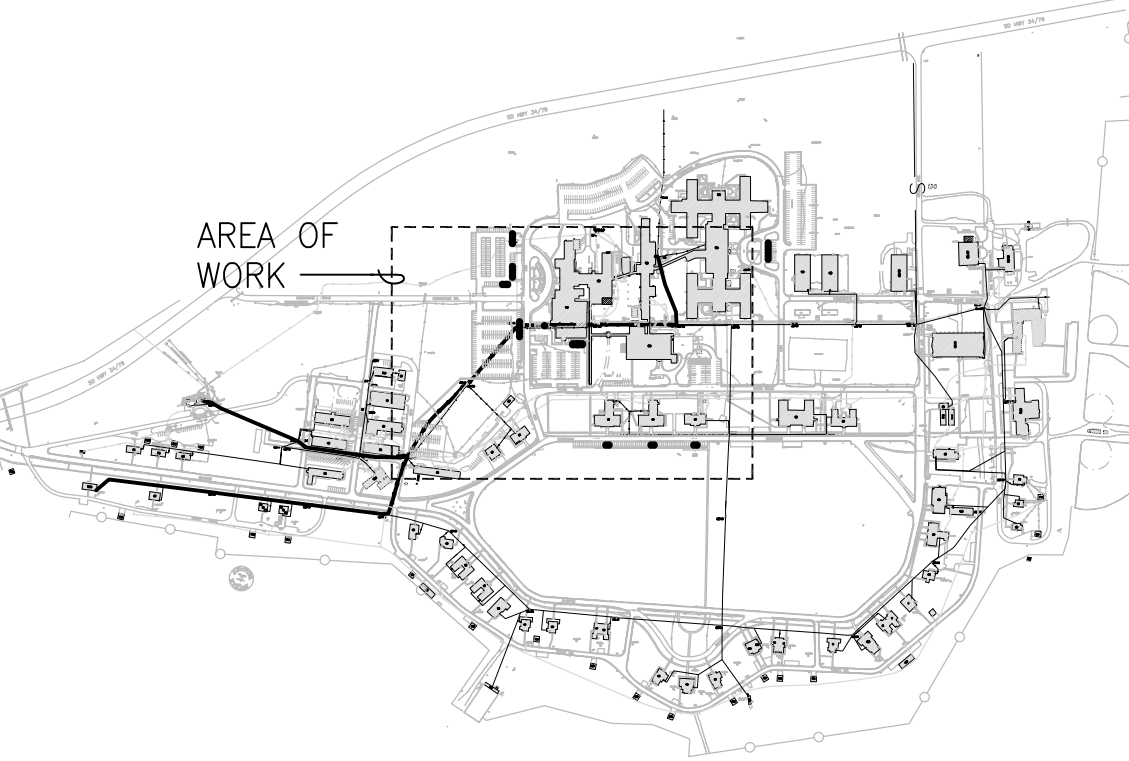
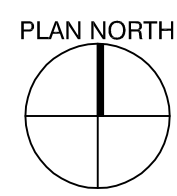
one quarter inch = one foot

one eighth inch = one foot

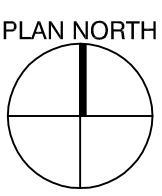
GA:2012.04121145 Dept of VA(V23) Upgrade Fiber Backbone(D=Drawings\Electrical\ES102.dwg 2-04-13 10:26:25 AM kennedyjn



1D ELECTRICAL SITE PLAN - EAST
SCALE: 1" = 50'-0"

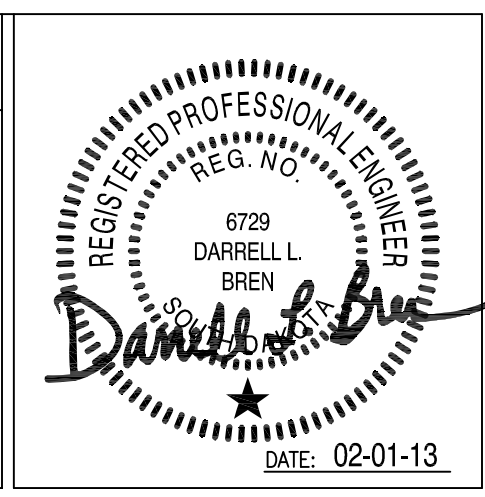


9D KEY PLAN
SCALE: NO SCALE



Revisions:	Date

CONSULTANTS:



ARCHITECT/ENGINEERS:

TSP

TSP, Inc.
1112 N. West Ave.
Sioux Falls, SD 57104
phone: (605) 336-1160
fax: (605) 336-7926
www.teamtsp.com
TSP PROJECT #04121145

To Solve. To Excel. Together.

Drawing Title ELECTRICAL SITE PLAN - EAST
Approved Project Director

Project Title UPGRADE FIBER BACKBONE
Location FORT MEADE, SD
Date 02-01-13
Checked DLB
Drawn JNK

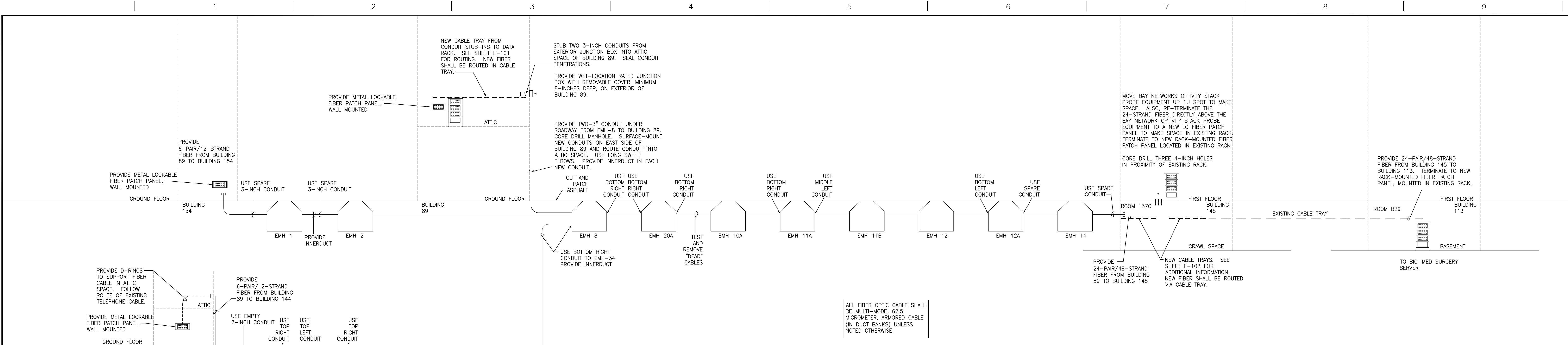
Project Number 568-13-113
Building Number SITE - EAST
Drawing Number ES102
Dwg 6 of 7

Office of
Construction
and Facilities
Management

Department of
Veterans Affairs

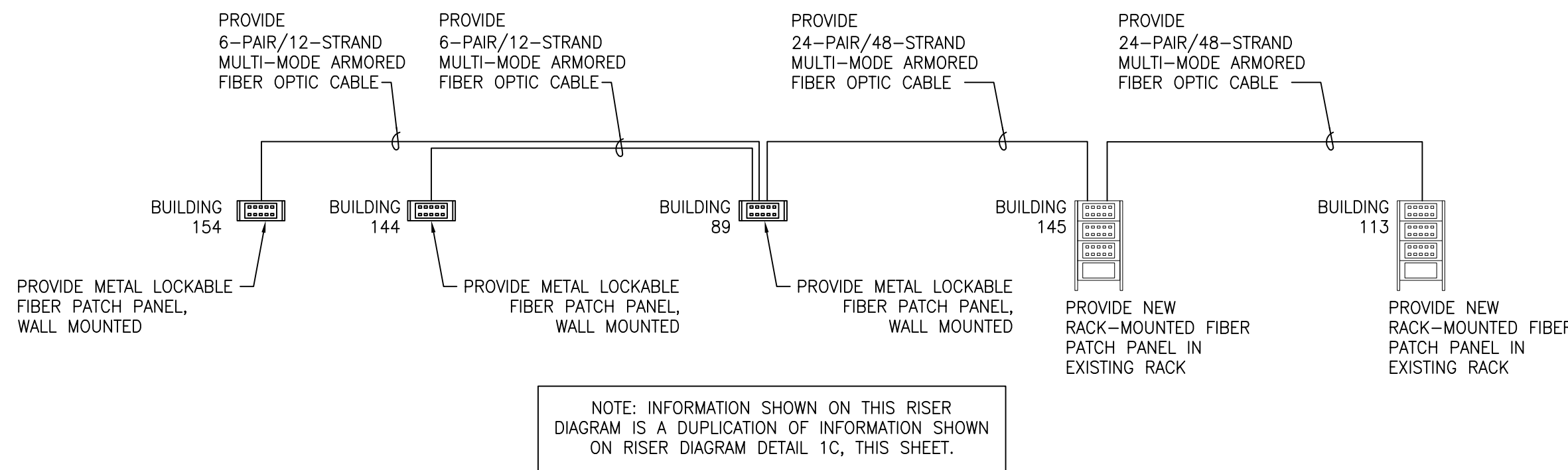
three inches = one foot
one and one half inches = one foot
one inch = one foot
one inch = one foot
three quarters inch = one foot
three quarters inch = one foot
one half inch = one foot
one half inch = one foot
three eighths inch = one foot
one quarter inch = one foot
one eighth inch = one foot
one eighth inch = one foot

6/20/12 04:12:11 45 Dept of VA\Q23 Upgrade Fiber Backbone\Drawings\Electrical\E-601.dwg 2-06-13 10:47:30 AM Kennedyjn



1C COMMUNICATIONS RISER DIAGRAM - DETAILED

SCALE: NO SCALE



1D COMMUNICATIONS RISER DIAGRAM

SCALE: NO SCALE

SHEET GENERAL NOTES

- PROVIDE 20-FOOT SERVICE LOOP OF FIBER IN MANHOLE WHERE FIBER ENTERS BUILDINGS.
- PROVIDE LONG SWEEP ELBOWS ON ALL RACEWAYS.
- SUPPORT FIBER AROUND OUTSIDE OF MANHOLES.
- USE LC TERMINATIONS THROUGHOUT.
- REFER TO SPECIFICATIONS (271500.2.2.B) FOR PATCH CORD REQUIREMENTS.

CONSULTANTS:

ARCHITECT/ENGINEERS:



TSP, Inc.
1112 N. West Ave.
Sioux Falls, SD 57104
phone: (605) 336-1160
fax: (605) 336-7926
www.teamtsp.com
TSP PROJECT #04121145

Drawing Title
RISER DIAGRAMS

Approved Project Director

Project Title
UPGRADE FIBER BACKBONE

Location
FORT MEADE, SD

Date
02-01-13

Checked
DLB

Drawn
JNK

Project Number
568-13-113

Building Number
RISER

Drawing Number
E-601

Dwg 7 of 7

Office of
Construction
and Facilities
Management

