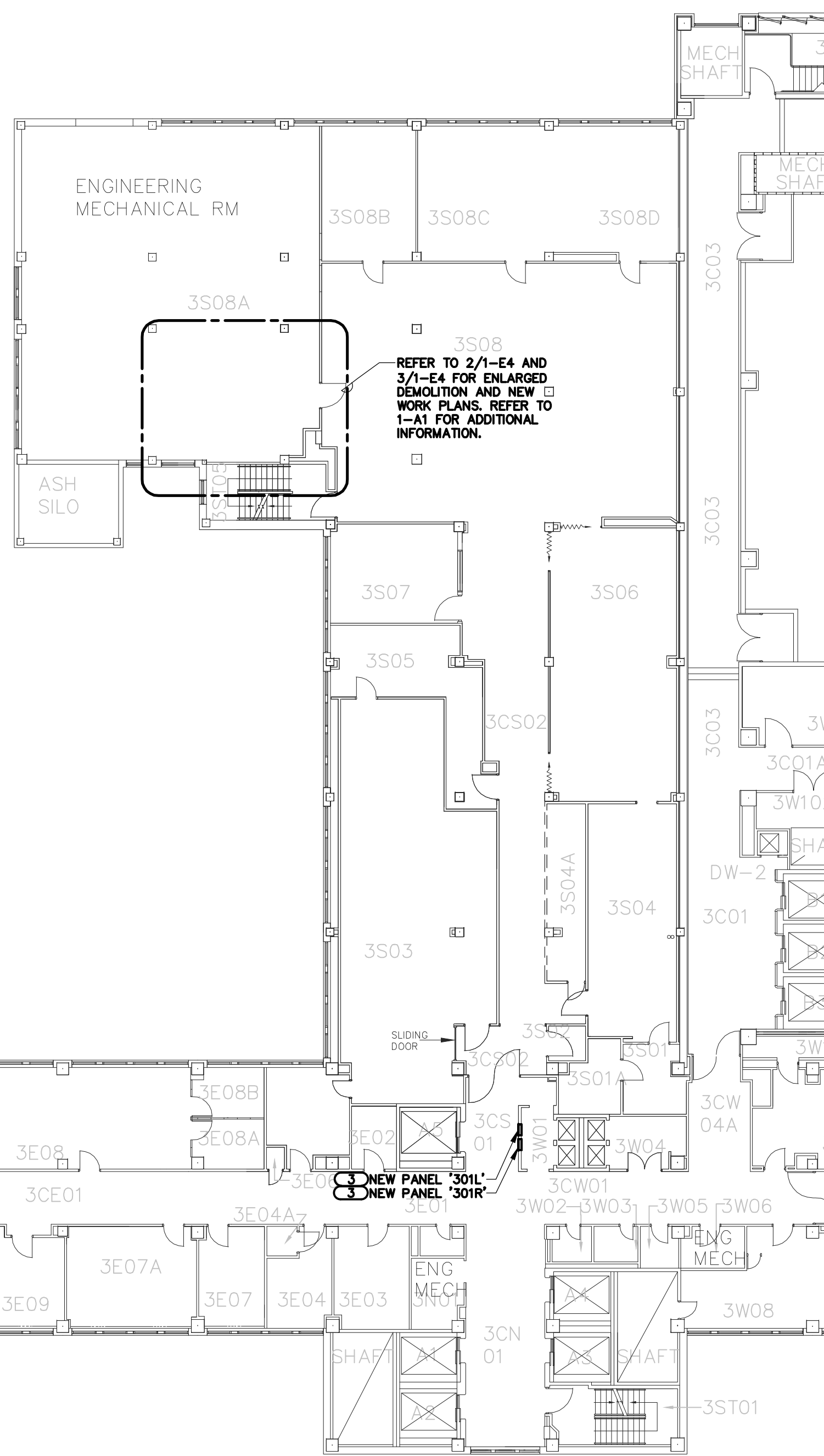
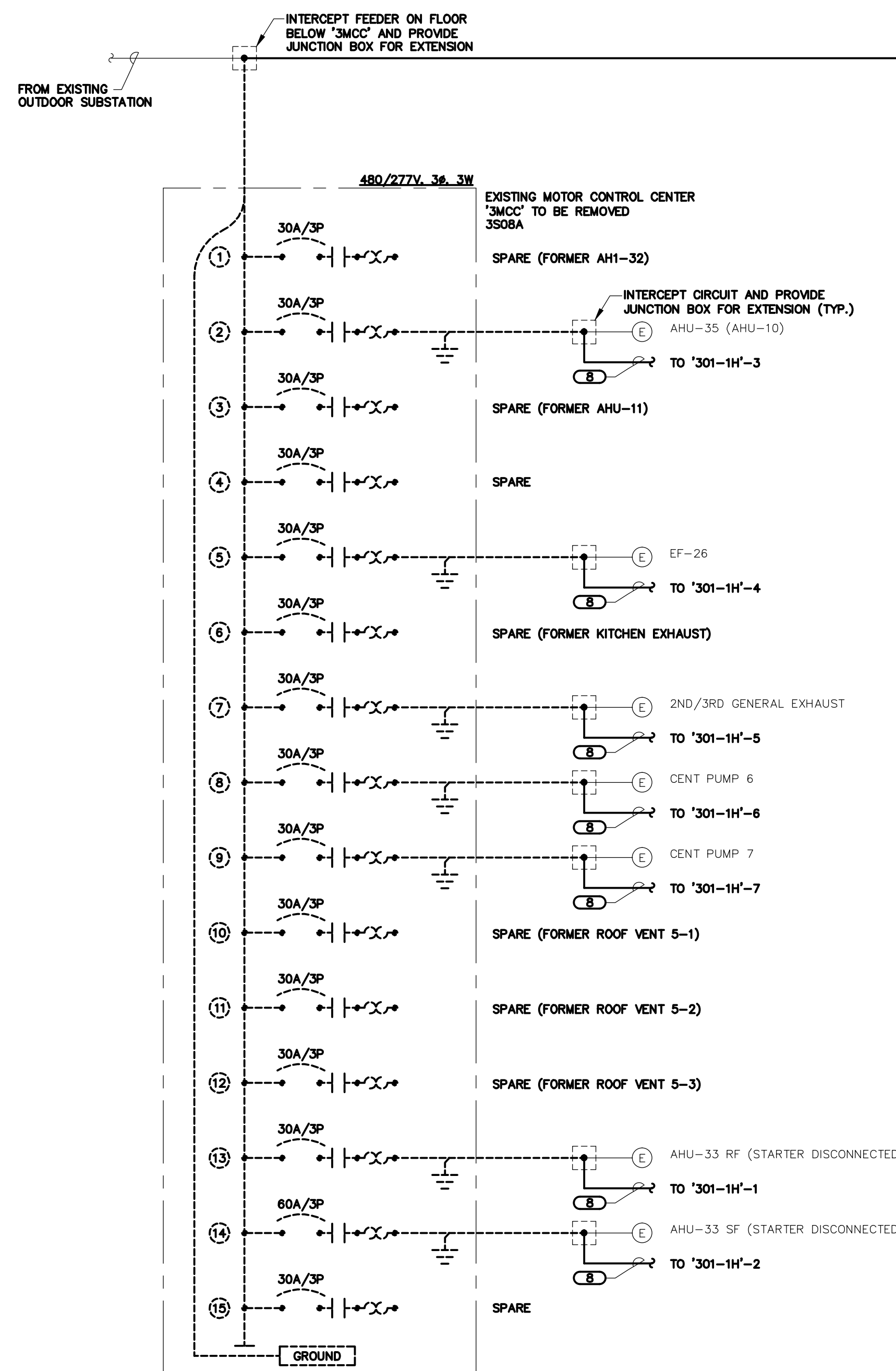


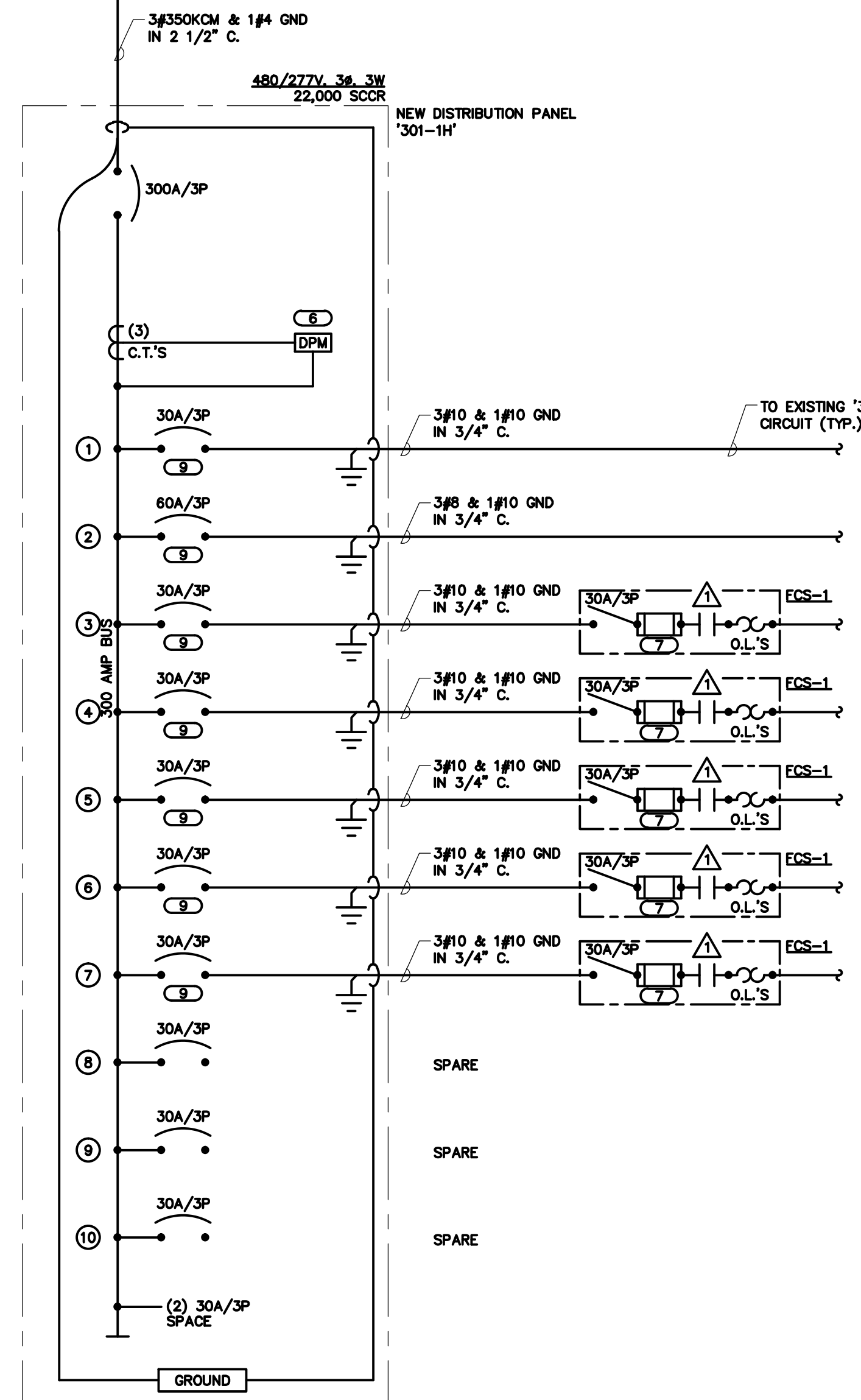
PARTIAL ONE-LINE DIAGRAM
- THIRD FLOOR REVISIONS



THIRD FLOOR PLAN - ELECTRICAL
SCALE: 1/16"=1'-0"



PARTIAL ONE-LINE DIAGRAM
- THIRD FLOOR REVISIONS



GENERAL NOTES

1. REFER TO 1-E7 FOR ELECTRICAL NOTES AND SCHEDULES.
1. EXISTING FLUSH MOUNTED PANEL TO BE REPLACED IN SAME LOCATION WITH NEW BACKBOX. CUT EXISTING WALL OPEN TO INSTALL NEW PANEL AND INTERCEPT EXISTING CONCEALED CONDUITS. PROVIDE ALL NEW BRANCH BREAKERS IN QUANTITIES AND SIZES TO MATCH EXISTING. DISCONNECT ALL EXISTING CIRCUITS AND RECONNECT TO NEW BREAKERS. ALL DOWNTIME AND SWITCH OVERTS TO BE COMPLETED ON OFF HOURS WITH LIMITED AND COORDINATED OUTAGES. OUTAGES IN AFTER HOURS SHALL NOT EXCEED 8 HOURS PER SCHEDULED OUTAGE.
2. EXISTING SURFACE MOUNTED PANEL TO BE REPLACED IN SAME LOCATION WITH NEW BACKBOX. PROVIDE ALL NEW BRANCH BREAKERS IN QUANTITIES AND SIZES TO MATCH EXISTING. DISCONNECT ALL EXISTING CIRCUITS AND RECONNECT TO NEW BREAKERS. ALL DOWNTIME AND SWITCH OVERTS TO BE COMPLETED ON OFF HOURS WITH LIMITED AND COORDINATED OUTAGES. OUTAGES IN AFTER HOURS SHALL NOT EXCEED 8 HOURS PER SCHEDULED OUTAGE.
3. EXISTING FLUSH MOUNTED PANEL TO BE REPLACED IN SAME LOCATION UTILIZING SAME BACKBOX. PROVIDE NEW PANEL INTERIOR AND COVER CUSTOM SIZED TO FIT IN EXISTING FLUSH BACKBOX. PROVIDE ALL NEW BRANCH BREAKERS IN QUANTITIES AND SIZES TO MATCH EXISTING. DISCONNECT ALL EXISTING CIRCUITS AND RECONNECT TO NEW BREAKERS. ALL DOWNTIME AND SWITCH OVERTS TO BE COMPLETED ON OFF HOURS WITH LIMITED AND COORDINATED OUTAGES. OUTAGES IN AFTER HOURS SHALL NOT EXCEED 8 HOURS PER SCHEDULED OUTAGE.
4. NEW STARTERS PROVIDED FOR CONTROL OF EXISTING TO REMAIN LOADS. E.C. TO PROVIDE ALL REQUIRED ADJUSTMENTS TO HVAC CONTROL SYSTEM TO RE-ROUTE CONTROL OF EQUIPMENT FROM THE OLD MCC TO NEW STARTERS. THIS INCLUDES PNEUMATIC AND DIGITAL CONTROLS, AS APPLICABLE.
5. REFER TO 5/1-E4 FOR ONE-LINE REVISIONS FOR THIS PANEL. REFER TO PANEL SCHEDULE FOR NEW PANEL '3PS' FOR INFORMATION ON QUANTITIES OF BRANCH CIRCUITS TO BE REFEED.
6. CONNECT TO EXISTING HOSPITAL POWER LOGIC NETWORK. REVISE GRAPHICAL USER INTERFACE AS REQUIRED TO NEW DATA FROM NEW POWER MONITOR. THE POWER MONITOR MUST BE FULLY FUNCTIONAL AND DISPLAY DATA SIMILAR TO EXISTING POWER MONITORS.
7. E.C. TO REVIEW EXISTING EQUIPMENT BEING SERVED AND TO SIZE THE FUSE TO MATCH.
8. EXTEND EXISTING CIRCUIT WIRING AND CONDUIT TO MATCH EXISTING. E.C. TO FIELD VERIFY.
9. E.C. TO FIELD VERIFY EXISTING LOADS TO CONFIRM BREAKER/WIRE SIZES ARE ADEQUATE AND ADJUST AS REQUIRED.

KEYNOTES

ENLARGED DEMO PLAN
SCALE: 1/8"=1'-0"

ENLARGED NEW WORK PLAN
SCALE: 1/8"=1'-0"

Revisions	Date	Approved Supervisor Facility Manager	Approved Associate Director Patient Care	Approved Associate Director	Approved Chief of Staff	Approved Director	Stamp	Key Plan	Architect/Engineer	Drawing Title	Project Title	Project Number	Building Number	Drawing Number	Office of Facilities Management			
										THIRD FLOOR PLAN - ELECTRICAL	ELECTRICAL PANELS, FEEDERS, SWITCH UPGRADES	636A8-12-009	1	1-E4	Department of Veterans Affairs			
										Approved Project Director	Location	IOWA CITY, IOWA		Dwg. 6 of 11				
											Date	12-14-12	Drawn	REEWIN	Checked	LEEYAN	Approved	MATSNY