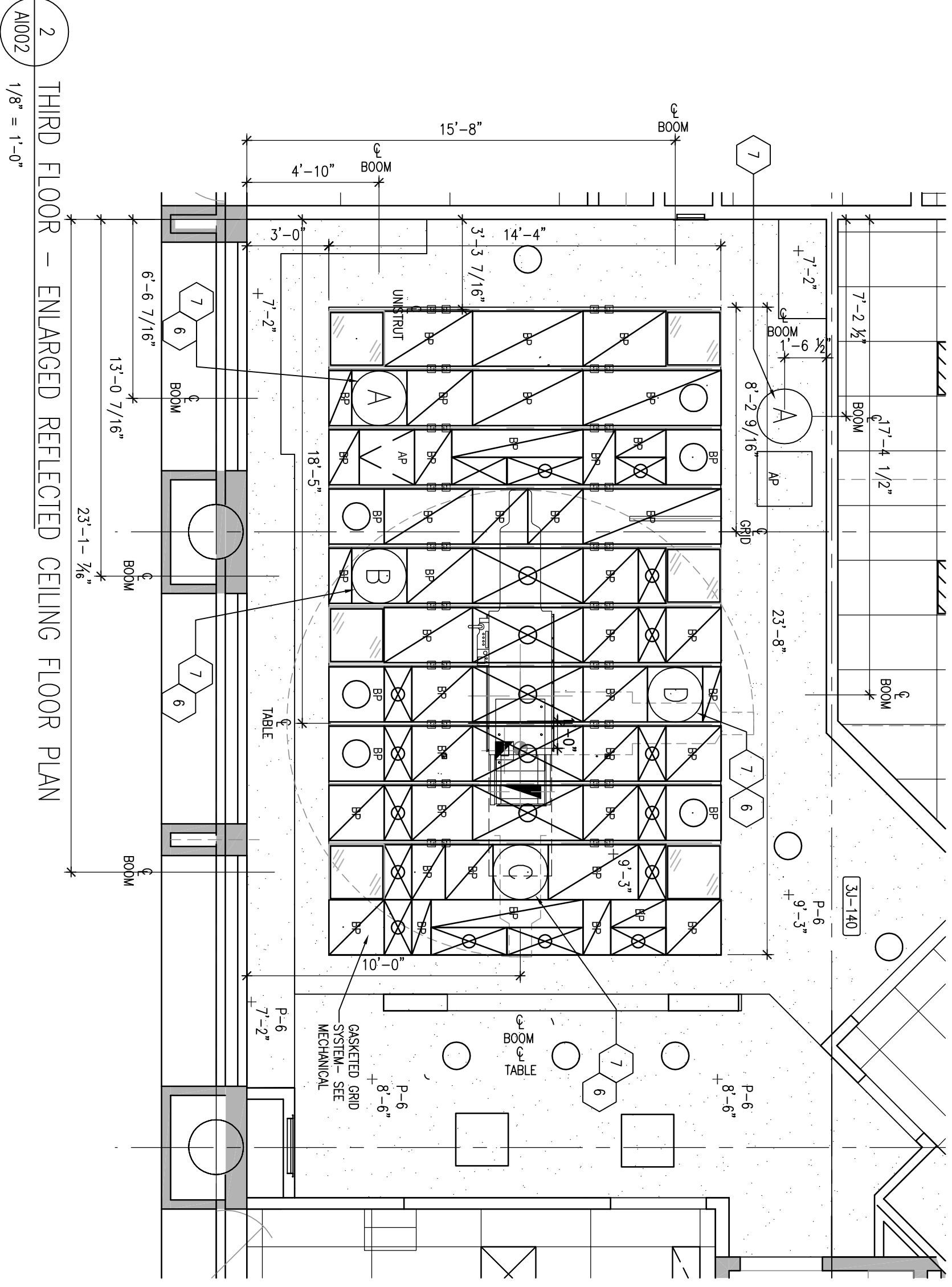


1	THIRD FLOOR - REFLECTED CEILING FLOOR PLAN
1/8" = 1'-0"	

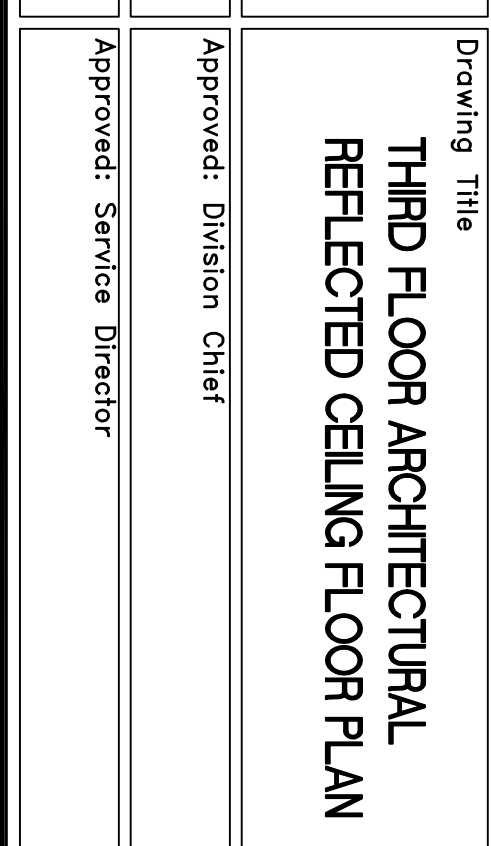
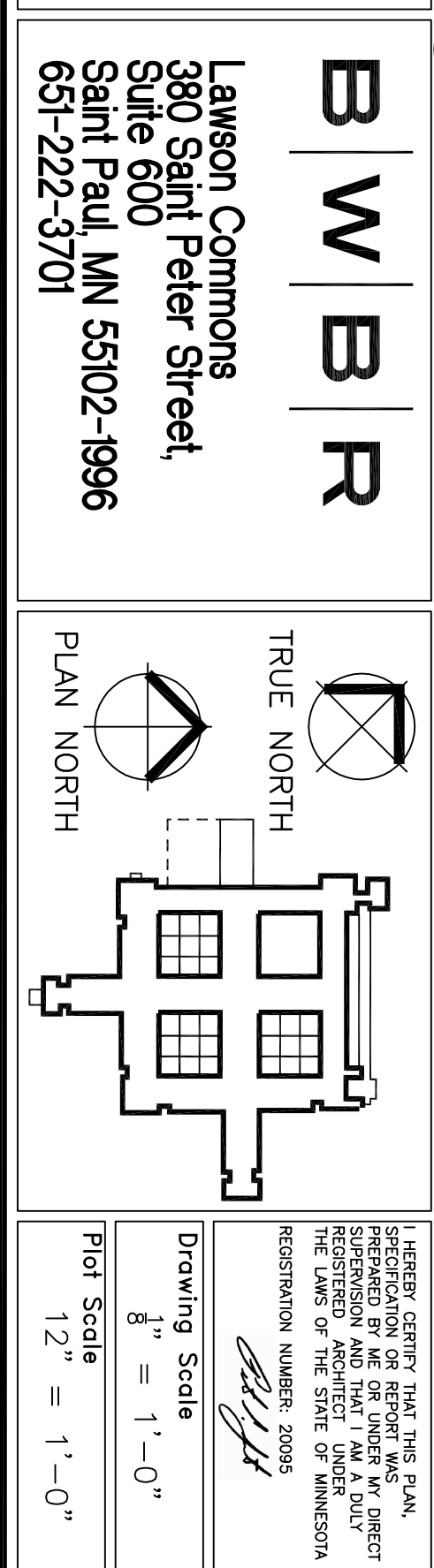
REFLECTED CEILING PLAN GENERAL NOTES	
<ol style="list-style-type: none"> 1. ALL CEILING HEIGHTS SHALL BE 9'-0" AFT. UNLESS NOTED OTHERWISE. 2. GENERAL CONTRACTOR TO COORDINATE ALL CEILING MOUNTED EQUIPMENT WITH OTHER TRADES, INCLUDING BUT NOT LIMITED TO: LIGHTING, SPEAKERS, SUPPLIER AND OWNER, PRIOR TO INSTALLATION. 3. ALL CEILING MOUNTED ITEMS SUCH AS: LIGHT FIXTURES, SPEAKERS, HANGERS, SPEAKERS, EXHIBIT LIGHTS ETC., SHALL BE LOCATED IN THE CENTER OF EACH SPACE. GRID SUPPORTS AND/OR REBAR SHALL BE ELECTRICALLY GROUNDWIRE. COORDINATE WITH MECHANICAL AND ELECTRICAL DRAWINGS. 4. WHERE SURFACE MOUNTED OBJECTS CLIPFAN AND/OR TV TRUCKS CROSS REFLECTED AREA, PROVIDE SPACERS AT CORNERS TEST FOR TRUE ALIGNMENT. COLOR TO MATCH SUSPENSION SYSTEM. 5. FINISHED FLOOR SHOULD EXTEND 1" BEYOND FACE AND EXPANDED RISER IS WALL CORNERS TALL-HEIGHT CORNERS ARE. UNLESS NOTED OTHERWISE, ALL CEILING MOUNTED EQUIPMENT SHALL BE INSTALLED PER SPECIFICATIONS DETAILS ARE REFERENCED FROM THE REFLECTED CEILING PLAN. 6. SEE MECHANICAL DRAWINGS FOR SPRINKLER DUCT TYPES AND LOCATIONS. 	<h3>REFLECTED CEILING PLAN KEYED NOTES</h3> <ul style="list-style-type: none"> (1) NO WORK SCHEDULED IN THIS AREA. (2) PATCH EXISTING CEILING GRID SYSTEM. INSTALL ACCT. AT ENTIRE ROOM. (3) PATCH EXISTING CEILING GRID SYSTEM. INSTALL ACCT. AT INTLL AREA TO MATCH ADJACENT. (4) PROVIDE GRID HEADERS AT 7'-8"FT. WHICH WALL FINISHES ON EACH SIDE. PAINT UNDERBONE RISE. (5) PROVIDE GRID STAYT AT 7'-2"FT. WHICH WALL FINISHES ON FACE. PAINT UNDERBONE RISE. (6) INSTALL BLANK OFF PANEL TO SEAL OFF OPENING AROUND BOOM. (7) PROVIDE SCALANT AROUND PERIMETER OF OPENING. (8) REMOVE EXISTING CEILING BOARD. SEE STRUCTURAL FOR REMOVAL DRAWINGS. <p>RN-3C</p>


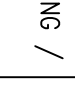
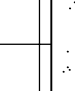
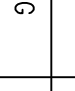

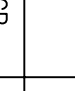
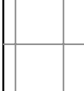
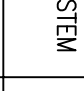

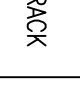
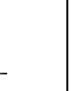
7. ALL STRAIGHT IV TRACKS SHALL BE 4'-0" LONG, UNLESS NOTED OTHERWISE.

8. AT REMODELING WORK IN EXG ACT SUSPENSION SYSTEM, REMOVE EXG PANELS CUT AS REQUIRED FOR NEW CONSTRUCTION, AND RE-INSTALL REPLACE ALL DAMAGED AND EXTREMELY SOILED PANELS WITH NEW ACT TO MATCH EXG.

[illegible][illegible]

2 THIRD FLOOR - ENLARGED REFLECTED CEILING FLOOR PLAN
1/8" = 1'-0"



REFLECTED CEILING PLAN SYMBOLS LEGEND				L-R-3
	GRID CEILING / SPRINT		2' x 4' LIGHT FIXTURE	
	ACOUSTIC CEILING SYSTEM		2' x 2' LIGHT FIXTURE	
	EXISTING ACOUSTIC CEILING SYSTEM		RECESSED LIGHT FIXTURE	
	CLEAR ACOUSTIC CEILING SYSTEM		MECHANICAL SUPPLY OUTLET	
	CEILING KNOCK		MECHANICAL RETURN GRILLE	
	CEILING ELEVATION			

Project Title	V.A. MEDICAL CENTER ONE VETERANS DRIVE MINNEAPOLIS, MN 55417			Project No.	VA Proj # 68-421H Building # 35010000
SITE PREP FOR EP LAB				Estimating #	70
Location				Planning No.	1208-A1002
Date	08-28-2012	Created By	Kr	Drawn	
				WWW	
				Dwg. 7	Of 49

100% CONTRACT ISSUE
FULLY SPRINKLERED

Office of
Facilities
Management
Department of
Veterans Affairs

 Department of
Veterans Affairs