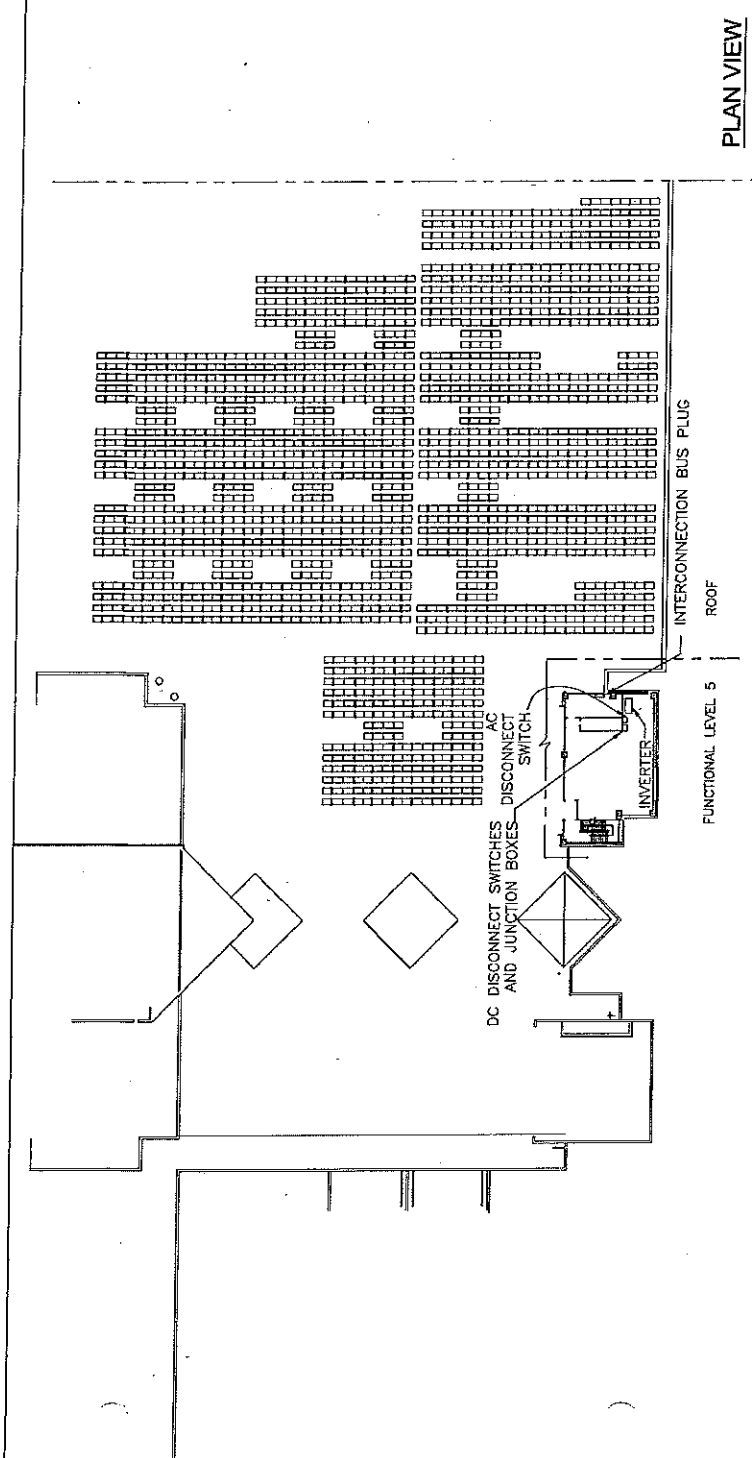
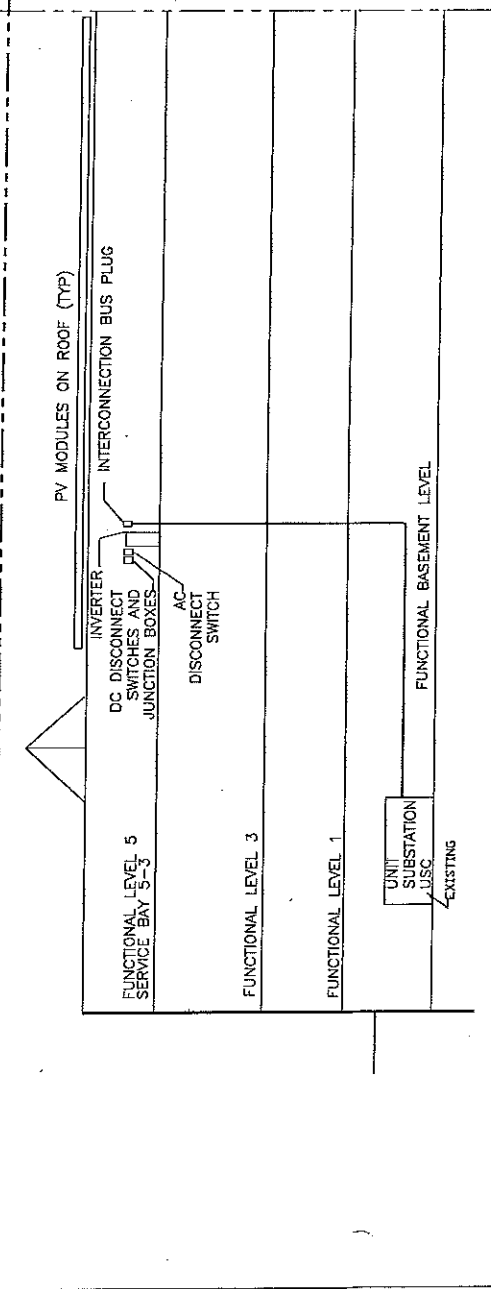


CDN	REV	DESCRIPTION	DATE	APPROVED
	1		4/14/08	gc



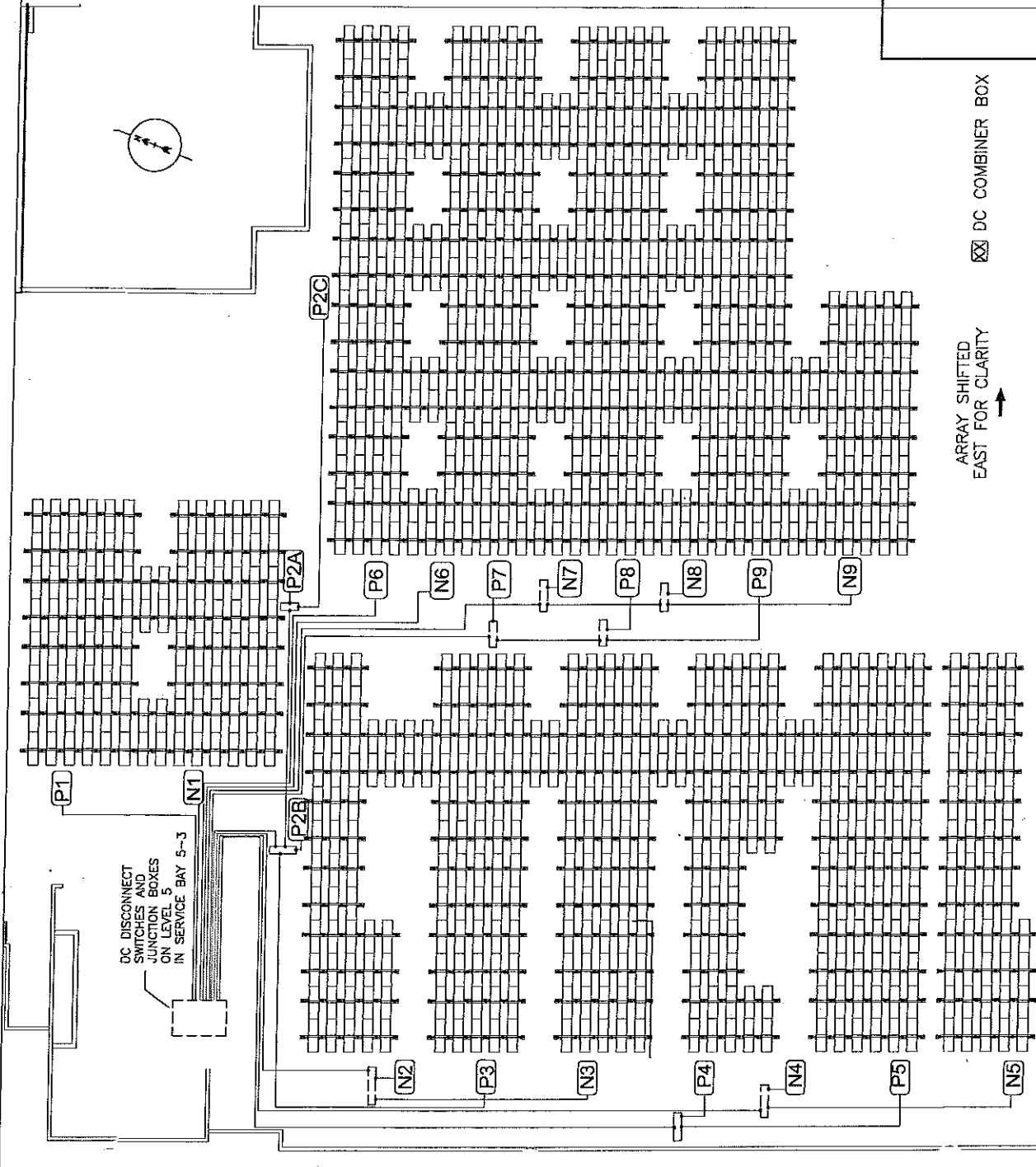
PLAN VIEW



WEST ELEVATION

APPROVAL	STATUS
CHECKED	CONFIDENTIAL PROJECT NO. 2208
APPROVED	PROJECT NO. 2208
DATE	DATE 5/14/08
SunWize 1100 Franklin St., Suite 100, Dallas, TX 75201 VA MEDICAL CENTER - DALLAS EQUIPMENT LOCATIONS PROJECT NO. 2208 DATE 5/14/08 SHEET 1 of 1	

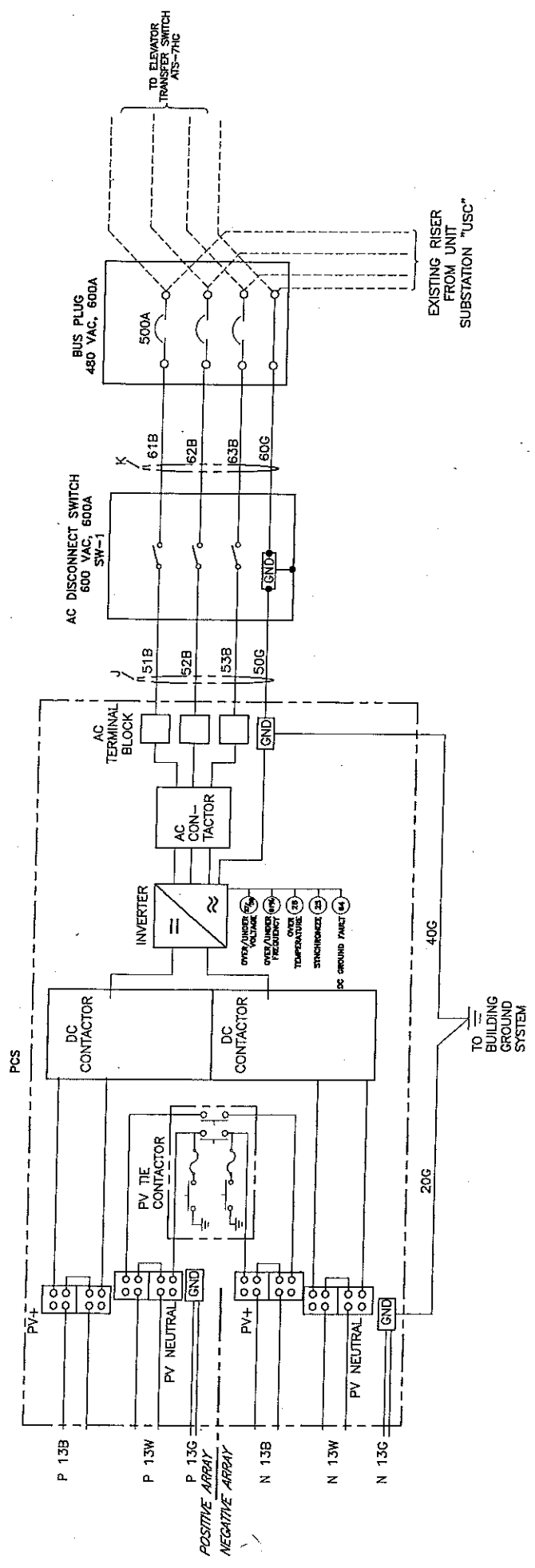
DATE	REV	DESCRIPTION	APPROVED
4/7/83	A	NEW RELEASE	



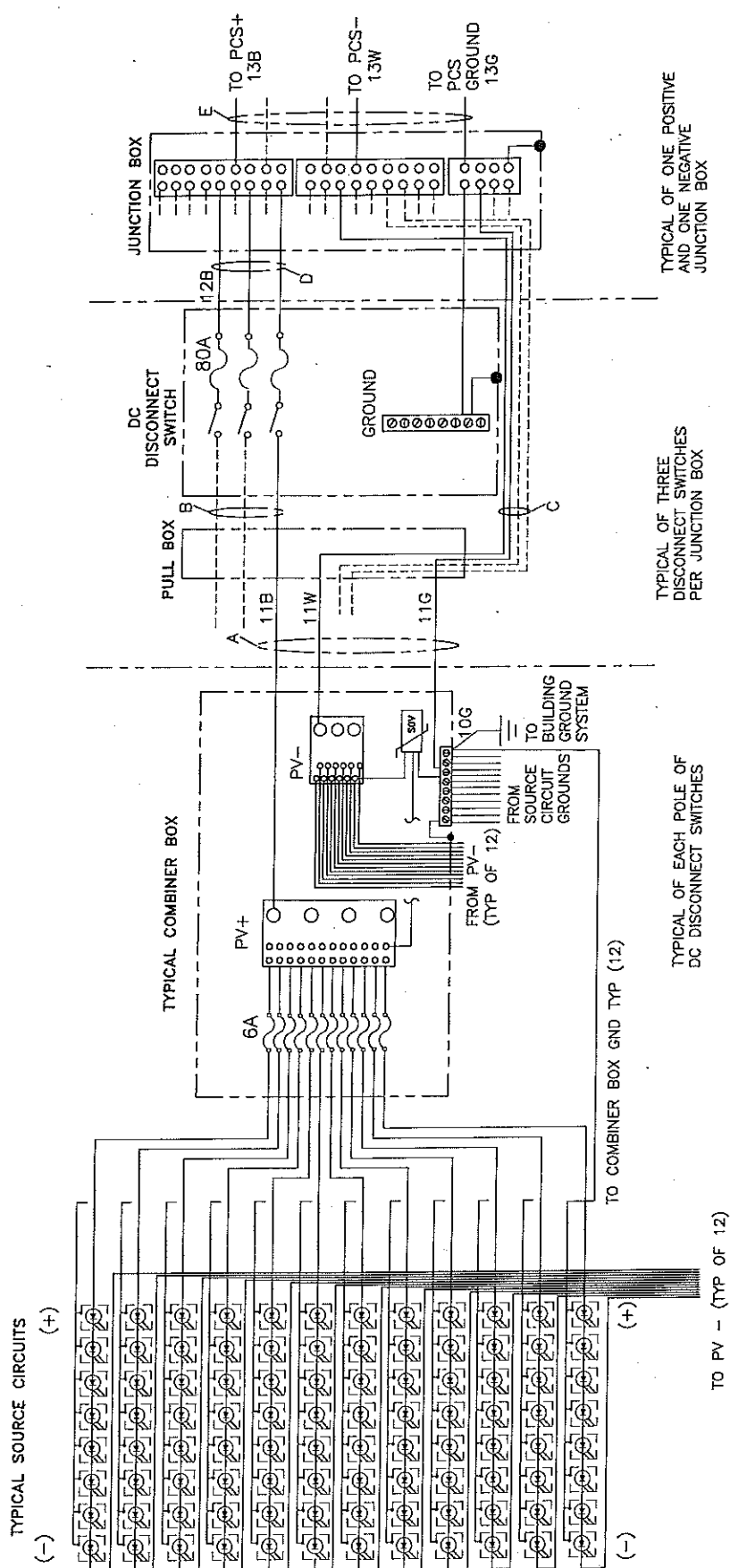
STATUS		APPROVAL	
COMPANY	2208		
PROJECT	VA MEDICAL CENTER - DALLAS		
TELETYPE/DESCRIPTION	DC CONDUIT LAYOUT		
DATE	4/7/83		
BY	501-03-006		
REV	2		

SunWize
1100 Fennell Rd. Ringwood, NY 13445

DATE	4/11/82	APPROVED	JE
BY	JE	REVISION	DESCRIPTION
1	A	NEW RELEASE	



APPROVAL		STATUS	
SunWize 1100 Parkway Dr., Naperville, IL 60563 PROJECT: VA MEDICAL CENTER - DALLAS PART NO: 1100/VA/2003/0001		DRAWING NO: 501-03-004/A DATE: 3/22/03 REVISION: 2	
		CHECKED: JWH DESIGNED: JWH DRAWN: JWH SCALE: 1"=1'-0"	



- NOTES:
1. MAXIMUM OF 12 SOURCE CIRCUITS PER COMBINER BOX
 2. MAXIMUM OF 12 SOURCE CIRCUITS PER POLE OF DC DISCONNECT SWITCHES
 3. EQUIPMENT GROUNDING INCLUDES MODULE RACK GROUNDING
 4. SEE DRAWING NO. 501-03-006 FOR DC CIRCUIT SCHEDULE

STATUS

APPROVAL

SOURCE CIRCUIT CONDUCTOR DESIGNATOR KEY

COMBINER	1	2	3
WIRE	1	2	3
NUMBER	1	2	3

WIRE COLOR

DESIGNATOR

DATE 3/22/83

SCALE 1:1

SunWize

1105 Parkway, Inc. Houston, TX 77057

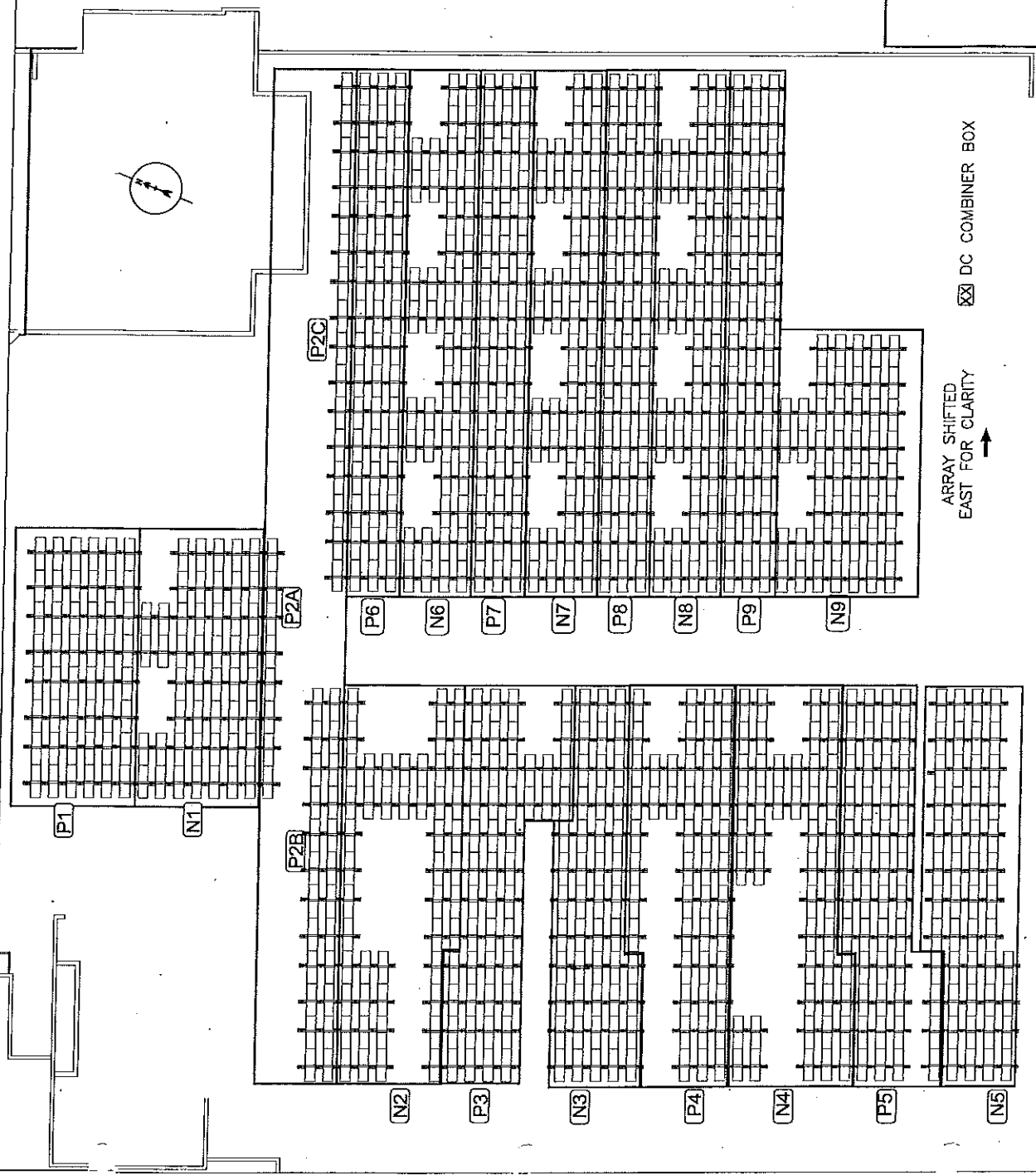
VA MEDICAL CENTER DALLAS

PROJECT NO. 501-03-006

DATE 3/22/83

SCALE 1:1

DATE: 4/1/05
 BY: A
 CHECKED: A
 APPROVED: A



DC COMBINERS		
COMBINER ID	CIRCUITS	
N1	12	
N2	12	
N3	12	
N4	12	
N5	12	
N6	12	
N7	12	
N8	12	
N9	12	
P1	12	
P2A	12	
P2B	12	
P2C	12	
P3	12	
P4	12	
P5	12	
P6	12	
P7	12	
P8	12	
P9	12	

DC SWITCHES		
SWITCH	POLE COMBINERS	NUMBER OF SOURCE CIRCUITS
NA	1 N1	12
	2 N2	12
	3 N3	12
NB	1 N4	12
	2 N5	12
	3 N6	12
NC	1 N7	12
	2 N8	12
	3 N9	12
PA	1 P1	12
	2 P2A,B,C	12
	3 P3	12
PB	1 P4	12
	2 P5	12
	3 P6	12
PC	1 P7	12
	2 P8	12
	3 P9	12

SEE DWG. 501-03-007

STATUS	
CONSTRUCTION	APPROVAL
PROJECT NO. 2208	DATE 4/1/05
PROJECT: VA MEDICAL CENTER -- DALLAS	
DC COMBINER LAYOUT	
DESIGNED BY: JWS	CHECKED BY: JWS
DATE: 4/1/05	REVISION: 1



1100 FORT WORTH, TEXAS 76104