

A
three inches = one foot
B
one and one half inches = one foot
C
one inch = one foot
D
three quarters inch = one foot
E
one half inch = one foot
F
one quarter inch = one foot
one eighth inch = one foot

PLUMBING ABBREVIATIONS	
AG	ABOVE GRADE
ADD	ADDENDUM
ADDL	ADDITIONAL
ADJ	ADJUSTABLE
AFF	ABOVE FINISH FLOOR
AFG	ABOVE FINISH GRADE
ALT	ALTERNATE
BG	BELOW GRADE
CA	COMPRESSED AIR
CO	CLEANOUT
COL	COLUMN
CW	COLD WATER (DOMESTIC)
DN	DOWN
EC	ELECTRICAL CONTRACTOR
EQ	EQUAL
F	FURNACE
FCO	FLOOR CLEANOUT
FD	FLOOR DRAIN
FLR	FLOOR
FOR	FUEL OIL RETURN
FOS	FUEL OIL SUPPLY
FOV	FUEL OIL VENT
FS	FLOOR SINK
FT	FOOT (FEET)
FV	FLUSH VALVE
GA	GAUGE
GAL	GALLON
GC	GENERAL CONTRACTOR
GPM	GALLONS PER MINUTE
HA	HAMMER ARRESTOR
HW	HOT WATER (DOMESTIC)
HWR	HOT WATER RETURN (DOMESTIC)
MA	MEDICAL AIR
MC	MECHANICAL CONTRACTOR
MECH	MECHANICAL
MED	MEDICAL
MIN	MINIMUM
MV	MEDICAL VACUUM
NC	NORMALLY CLOSED
NTS	NOT TO SCALE
NPCW	NON POTABLE COLD WATER
O2	OXYGEN
OS	OPEN SITE DRAIN
PC	PLUMBING CONTRACTOR
PLBG	PLUMBING
PRES	PRESSURE
QTY	QUANTITY
RO	REVERSE OSMOSIS WATER
SAN	SANITARY
SCH	SCHEDULE
SPEC	SPECIFICATIONS
SS	SANITARY STACK
TEMP	TEMPERATURE
TW	TEPID WATER (DOMESTIC)
TYP	TYPICAL
VS	VENT STACK
VTR	VENT THRU ROOF
W/	WITH
WCO	WALL CLEANOUT
WC	WATER CLOSET

PLUMBING RENOVATION NOTES	
1.	WHERE EXISTING PIPING IS DESIGNATED TO BE REMOVED AND CAPPED, ALL PIPING SERVING THE DESIGNATED FIXTURE SHALL BE REMOVED FROM WITHIN WALLS TO THE POINT DESIGNATED ON THE DRAWINGS OR TO A CLEARLY VISIBLE POINT BELOW THE FLOOR IN THE CRAWL SPACE OR ABOVE THE CEILING. PIPING SHALL BE CAPPED BY APPROVED CAPPING METHODS UTILIZING PIPE CAPS INTENDED FOR SUCH USE. ALL CAPS SHALL BE AIRTIGHT AND WATERTIGHT.
2.	WHERE EXISTING SURFACES ARE DISRUPTED DUE TO THE REMOVAL OF EXISTING EQUIPMENT OR PIPING, THIS CONTRACTOR SHALL BE RESPONSIBLE OR THE REPAIR OF DISRUPTED SURFACES TO MATCH EXISTING ADJACENT SURFACES.
3.	PLUMBING FIXTURES DESIGNATED TO BE REUSED SHALL BE CLEANED AND MAINTENANCE SERVICED TO OPERATE AS INTENDED.
4.	EXISTING CONDITIONS AS SHOWN ON THE DRAWINGS ARE TAKEN FROM ORIGINAL AND AS-BUILT DRAWINGS OF THE BUILDING AND IN PART ARE UNVERIFIED. FIELD CONDITIONS SHALL GOVERN. ALL EXISTING CONDITIONS MUST BE VERIFIED PRIOR TO INITIATION OF WORK.
5.	ALL EXISTING SANITARY AND DOMESTIC WATER PIPING SHALL BE RELOCATED TO CREATE REQUIRED SPACE FOR INSTALLATION OF ALL NEW SERVICES FOR NEW CONSTRUCTION, INCLUDING BUT NOT LIMITED TO H.V.A.C., ELECTRICAL, PLUMBING, AND FIRE PROTECTION TRADES. CONTRACTOR SHALL INCLUDE ALL NEW PIPING AND FITTINGS REQUIRED AND RELOCATE ANY AND ALL EXISTING SERVICES.
6.	ALL EXISTING PIPING, NOT REMAINING IN SERVICE AFTER NEW CONSTRUCTION, SHALL BE REMOVED.
7.	PLUMBING CONTRACTOR SHALL BE RESPONSIBLE FOR REMOVING ALL EXISTING PLUMBING FIXTURES AND TRIM, PIPING, VALVES, ETC. IN AREAS TO BE DEMOLISHED.
8.	ALL EXISTING PLUMBING FIXTURES TO BE REMOVED AND ARE NOT TO BE REUSED SHALL REMAIN THE PROPERTY OF THE OWNER. DISCARD UNWANTED FIXTURES AT AT THE DISCRETION OF THE OWNER.
9.	PIPING WHICH IS TO REMAIN IN SERVICE SHALL NOT BE DISTURBED. EXISTING PIPING BROKEN DURING CONSTRUCTION SHALL BE REPLACED WITH NEW PIPING OF THE SAME SIZE AND MATERIAL.
10.	ALL EXISTING SANITARY AND DOMESTIC WATER PIPING THAT ARE LOCATED IN EXISTING WALLS TO BE DEMOLISHED AND REMAINING IN SERVICE AFTER CONSTRUCTION SHALL BE RELOCATED TO NEW WALLS, CHASES, ETC.
11.	COORDINATE WITH GENERAL CONTRACTOR TO PATCH ALL EXISTING WALLS, FLOORS, CEILINGS, ETC., AS REQUIRED BY NEW WORK.
12.	DISPOSE OF ALL MATERIALS AND RECYCLE IN ACCORDANCE WITH ALL CONTRACT DOCUMENTS.
13.	NOTIFY OWNER IMMEDIATELY IF SUSPECTED ASBESTOS CONTAINING MATERIALS (ACM) ARE ENCOUNTERED.

GENERAL PLUMBING NOTES	
1.	THESE DRAWINGS SHALL NOT BE SCALED. SEE ARCHITECTURAL/CIVIL DRAWINGS FOR DIMENSIONAL INFORMATION. THIS ENGINEER WILL NOT BE LIABLE FOR MISCALCULATED PRODUCT TAKE-OFFS DUE TO SCALING OF DRAWINGS.
2.	CONTRACTOR SHALL VERIFY ANY POSSIBLE DISCREPANCIES BETWEEN TYPE AND SIZE OF CONNECTION SPECIFIED IN PLUMBING FIXTURE SCHEDULE AND FIXTURES ACTUALLY INSTALLED ON THE SITE AND CORRECT AS REQUIRED TO MEET ALL CODES AND REGULATIONS
3.	ALL SANITARY PIPING SHALL HAVE A 1/8" PER FOOT SLOPE UNLESS OTHERWISE NOTED. 2" SANITARY OR SMALLER SHALL HAVE A 1/4" PER FOOT SLOPE.
4.	VALVES AND FITTINGS SHALL BE OF SAME SIZE AS THE LINE ON WHICH THEY ARE LOCATED, UNLESS OTHERWISE INDICATED ON DRAWINGS.
5.	CONTRACTOR SHALL COORDINATE ALL WORK WITH OTHER TRADES.
6.	CONTRACTOR SHALL BE RESPONSIBLE FOR MAINTAINING FIRE RATING AND WEATHERPROOFING INTEGRITY OF ALL PIPING AND PENETRATIONS.
7.	ALL WATER SUPPLY AND SANITARY LINES SHALL BE RUN AS CLOSE TO PLANS AS POSSIBLE WITH NO CHANGES IN SIZING.
8.	CONTRACTOR SHALL BE RESPONSIBLE FOR PROVIDING ALL NECESSARY SUPPORTING DEVICES FOR ALL FIXTURES INCLUDED IN CONTRACT OR HEREIN SPECIFIED OR OTHERWISE.
9.	ALL DRAINAGE PIPING SHALL BE MARKED WITH THE SEAL OF APPROVAL OF THE NATIONAL SANITATION FOUNDATION.
10.	CONTRACTOR SHALL GIVE TWO WEEKS NOTICE IN WRITING TO, AND RECEIVE WRITTEN APPROVAL, FROM THE BUILDING ADMINISTRATOR (OR OWNER REPRESENTATIVE) PRIOR TO SHUT DOWN OF ANY SYSTEM OR DISRUPTION OF SERVICE TO ANY AREA. CONTRACTOR SHALL ALSO COORDINATE THE EXACT LOCATION AND TIMING OF SYSTEM(S) SHUTDOWN POINTS WITH THE OWNER REPRESENTATIVE (I.E.: ENGINEERING DEPARTMENT) CONTRACTOR SHALL MAKE EVERY EFFORT POSSIBLE TO MINIMIZE THE DURATION OF ANY DOWNTIME OR DISRUPTION PERIOD.
11.	ROUTE ALL PIPING CONCEALED ABOVE CEILINGS, WITHIN WALLS, OR IN CHASES. PIPING EXPOSED SHALL BE SLOPED AND PAINTED TO MATCH ARCHITECTURAL FINISHES. PIPING IN MECHANICAL ROOMS MAY BE EXPOSED.
12.	PROVIDE ACCESS PANELS TO ALL VALVES WITHIN CHASES OR ABOVE INACCESSIBLE CEILINGS. REFER TO ARCHITECTURAL DRAWINGS FOR CEILING TYPES.
13.	CONTRACTOR SHALL INSTALL DIELECTRIC UNIONS AT CONNECTIONS OF DISSIMILAR METALS.
14.	CONTRACTOR SHALL ROUGH-IN ALL WASTES AND SUPPLIES TO SPECIAL EQUIPMENT ACCORDING TO MANUFACTURER'S SHOP DRAWINGS AND MAKE FINAL CONNECTIONS. ALL SUPPLIES SHALL BE VALVED. INSTALL VACUUM BREAKERS WHERE REQUIRED BY CODE.
15.	ALL PIPING SHALL BE INSTALLED AS HIGH AS POSSIBLE IN PROVIDED CEILING SPACE.
16.	COORDINATE PIPING INSTALLATION AS TO NOT INTERFERE WITH HVAC EQUIPMENT ACCESS.
17.	FIXTURE AND EQUIPMENT SCHEDULES ARE BASIS OF DESIGN. MODIFICATIONS REQUIRED FOR SUBSTITUTED PLUMBING FIXTURES OR EQUIPMENT ARE THE RESPONSIBILITY OF THIS CONTRACTOR.

PLUMBING FIXTURE SCHEDULE									
MARK	FIXTURE	MANUF.	MODEL	MOUNT	ROUGH-IN SCHEDULE				FITTINGS & REMARKS
					COLD	HOT	WASTE	VENT	
L-1	LAVATORY W/ FOOT CONTROL	KOHLER	K-2030	WALL	1/2"	1/2"	1	1/2"	1 1/2" PROVIDE CHICAGO FAUCETS 626-E29VPCP FAUCET W/ 240.628.21.1 COVER PLATE & 834-EPSLOCP PEDAL VALVE, & MCGUIRE 8902 P-TRAP, 155A STRAINER, TRUEBRO LAV GUARD & WADE 520 CARRIER.
L-2	LAVATORY	KOHLER	K-2030	WALL	1/2"	1/2"	1	1/2"	1 1/2" PROVIDE CHICAGO #786-E29VPXKCP FAUCET, MCGUIRE 8902 P-TRAP, 155A STRAINER, & BV2165CC STOPS, TRUEBRO LAV GUARD & WADE 520 CARRIER.
L-3	LAVATORY W/ FAUCET MOUNT EYEWASH	KOHLER	K-2030	WALL	1/2"	1/2"	1	1/2"	1 1/2" PROVIDE SPEAKMAN SEF-1800-CA-BO EYESAVER FAUCET, SPEAKMAN SEF-TW MIXING VALVE, MCGUIRE 8902 P-TRAP, 155A STRAINER, & BV2165CC STOPS, TRUEBRO LAV GUARD & WADE 520 CARRIER. PROVIDE ALL REQUIRED FITTINGS AND PIPING AND INSTALL PER MANUFACTURER'S RECOMMENDATIONS.
S-1	SINK	ELKAY	PSR1716-3	COUNTER	1/2"	1/2"	1	1/2"	1 1/2" PROVIDE CHICAGO #786-E29VPXKCP FAUCET, MCGUIRE 8812 P-TRAP, MCGUIRE 151ALT STRAINER W/ 17 GA TAILPIECE, AND MCGUIRE BV2165CC STOPS.
WC-1	ADA WATER CLOSET	KOHLER	K-4330	WALL	1	1/2"	-	4"	2" PROVIDE BEMIS 1655C SEAT COVER, SLOAN ROYAL 111 FLUSH VALVE AND ZURN 12103-N4. ADA INSTALLATION.
PCU-1	PATIENT CARE UNIT	BRADLEY	LC700	FLOOR	1	1/2"	1/2"	3"	2" WATER CLOSET SHALL BE LOCATED RIGHT SIDE WITH 3" NO-HUB WALL OUTLET. LAVATORY SHALL HAVE OPTION FP - DECK MOUNT SPOUT WITH FOOT PEDAL CONTROLS. PROVIDE LAVATORY P-TRAP AND STOPS. COORDINATE ALL COLOR OPTIONS WITH ARCHITECT. ADA INSTALLATION.
FD-1	FLOOR DRAIN	SIoux CHIEF	833-225DNQ	FLOOR	-	-	2"	-	INSTALL FLUSH WITH FINISHED FLOOR. OR EQUAL.
FD-2	FLOOR DRAIN	SIoux CHIEF	833-24NR	FLOOR	-	-	4"	-	INSTALL FLUSH WITH FINISHED FLOOR. OR EQUAL.
HA-1	HAMMER ARRESTOR	WATTS	15M2-A	PIPE	1/2"	-	-	-	OR APPROVED EQUAL.
BP-1	BACKFLOW PREVENTER	WATTS	009QTS	PIPE	3/4"	-	-	-	PROVIDE WATTS 909AG-C AIR GAP. DRAIN AIR GAP TO OPEN SITE. SERVES CW SUPPLY TO RO SYSTEM.
BP-2	BACKFLOW PREVENTER	WATTS	009QTS	PIPE	-	3/4"	-	-	PROVIDE WATTS 909AG-C AIR GAP. DRAIN AIR GAP TO OPEN SITE. SERVES HW SUPPLY TO RO SYSTEM.
WB-1	ICE MAKER WALL BOX	GUY GRAY	FRIB12SHA	WALL	1/2"	-	-	-	PROVIDE CHUDNOW S470D-VV BACKFLOW PREVENTER AND REQUIRED TUBING. PROVIDE 2" OPEN SITE BELOW COUNTER.
RO-1	SINGLE CONNECTION DIALYSIS BOX	BY VENDOR	BY VENDOR	WALL	1/2"	RO	2"	1	1/2" PC SHALL INSTALL FLUSH WITH FINISHED WALL. COORDINATE WITH ARCHITECT FOR LOCATION & REQUIRED ACCESS PANELS. CONNECT BOTH 1/2" RO DROPS IN WALL ABOVE BOX TO MAINTAIN CONTINUOUS LOOP OF RO SYSTEM. MIN HEIGHT TO DRAIN SHALL BE 20" AFF.
RO-2	DUAL CONNECTION DIALYSIS BOX	BY VENDOR	BY VENDOR	WALL	1/2"	RO	2"	1	1/2" PC SHALL INSTALL FLUSH WITH FINISHED WALL. COORDINATE WITH ARCHITECT FOR LOCATION & REQUIRED ACCESS PANELS. CONNECT BOTH 1/2" RO DROPS IN WALL ABOVE BOX TO MAINTAIN CONTINUOUS LOOP OF RO SYSTEM. MIN HEIGHT TO DRAIN SHALL BE 20" AFF.

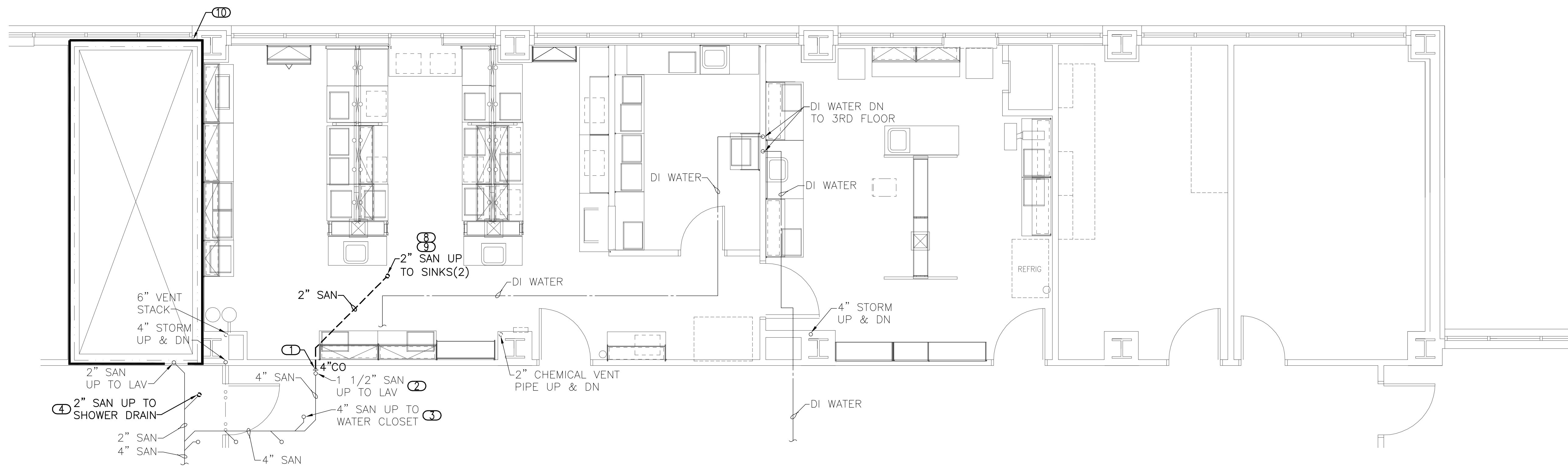
PLUMBING PIPING LEGEND	
	CIRCUIT SETTER
	BALL VALVE OR SHUT-OFF VALVE
	SPRING CHECK VALVE
	END CAP
	NEW TO EXISTING PIPE CONNECTION
	FLOW DIRECTION ARROW
	NEW TO EXISTING POINT OF CONNECTION SYMBOL
	PIPE CONNECTION
	HAMMER ARRESTOR (PISTON TYPE)
	HAMMER ARRESTOR (BELLOWS TYPE)
	REGULATOR
	ZONE VALVE BOX/AREA ALARM/WALL OUTLET
	OXYGEN OUTLET CALLOUT
	MEDICAL AIR OUTLET CALLOUT
	MEDICAL VACUUM OUTLET CALLOUT
	PIPING LINEWEIGHT: NEW/DEMOLITION
	PIPING LINEWEIGHT: EXISTING

PLUMBING LINETYPES	
LINETYPE	DESCRIPTION
_____	ABOVE GRADE SANITARY
_____	ABOVE GRADE STORM
-----	VENT ABOVE GRADE
_____	COLD WATER
_____	HOT WATER
-----	RECIRC WATER
_____O2_____	OXYGEN
_____MV_____	MEDICAL VACUUM
_____MA_____	MEDICAL AIR
-----	DEMOLITION

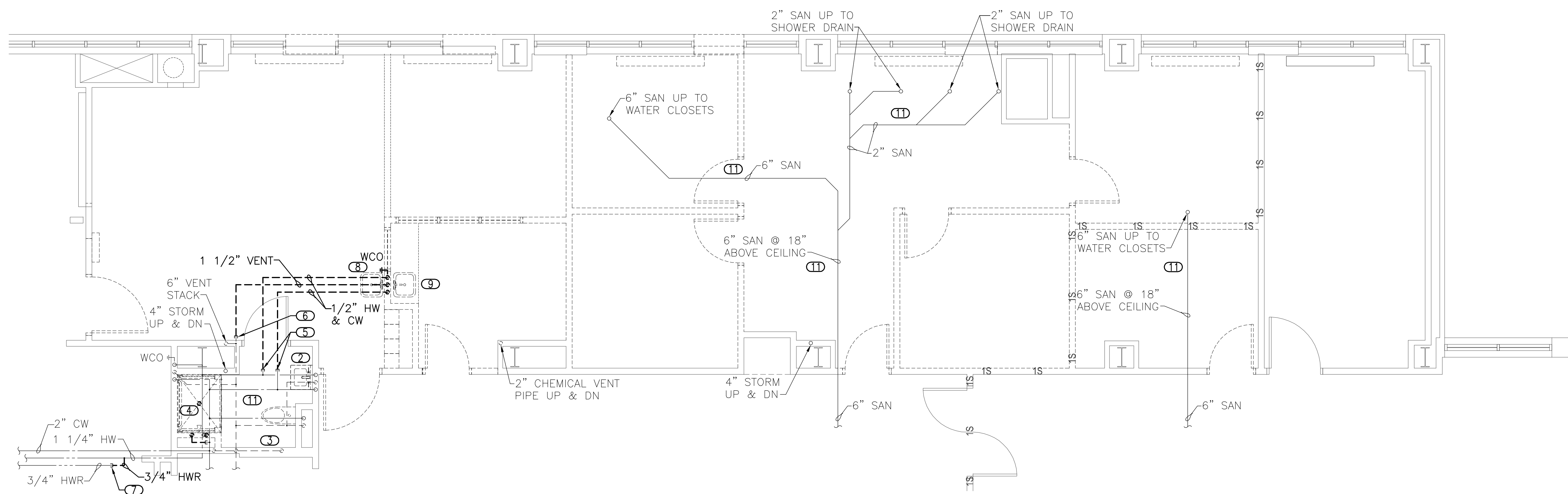
MEDICAL GAS ZONE VALVE BOX SCHEDULE											
TYPE	DESCRIPTION	MANUF.	MODEL	N2O	N	CO2	WADG	O2	MV	MA	NOTES
ZVB-1	THREE VALVE ZONE BOX ASSEMBLY	CHEMETRON	#77-83-0224	-	-	-	-	X	X	X	1,2
NOTES:											
1. PRIOR TO INSTALLATION FIELD VERIFY FINAL LOCATION OF VALVE WITH ARCHITECT AND GENERAL CONTRACTOR.											
2. PC TO INCLUDE CHEMETRON PRESSURE GAUGE #77-90-0571 FOR OXYGEN AND MEDICAL AIR AND CHEMETRON #77-90-0572 FOR MEDICAL VACUUM.											

PLUMBING SHEET INDEX	
P-001	PLUMBING COVER SHEET
P-101	PLUMBING DEMOLITION PLANS
P-201	PLUMBING PLANS
P-301	MEDICAL GAS PLANS
P-501	PLUMBING ISOMETRICS
P-601	PLUMBING DETAILS

		CONSULTANTS:		ARCHITECT/ENGINEERS:	Drawing Title PLUMBING COVER SHEET	Project Title OKLAHOMA CITY VA DIALYSIS EXPANSION & RENOVATION	Project Number 635-12-303	Office of Construction and Facilities Management Department of Veterans Affairs
					Approved: Project Director	Location OKLAHOMA CITY, OK	Building Number	
		engineers consultants commissioning MEP Associates, LLC 2400 Van Buren St. Suite 3404 Norman, OK 73072 Phone: 405.364.9926 Fax: 405.364.9936 www.mepasassociates.com CMP 5121 Revision Date: 06-30-2019 MEP PROJECT NO.: R22-12-01			Date DECEMBER 7, 2012	Checked TCC	Drawn NCF	
Revisions:	Date						P-001	

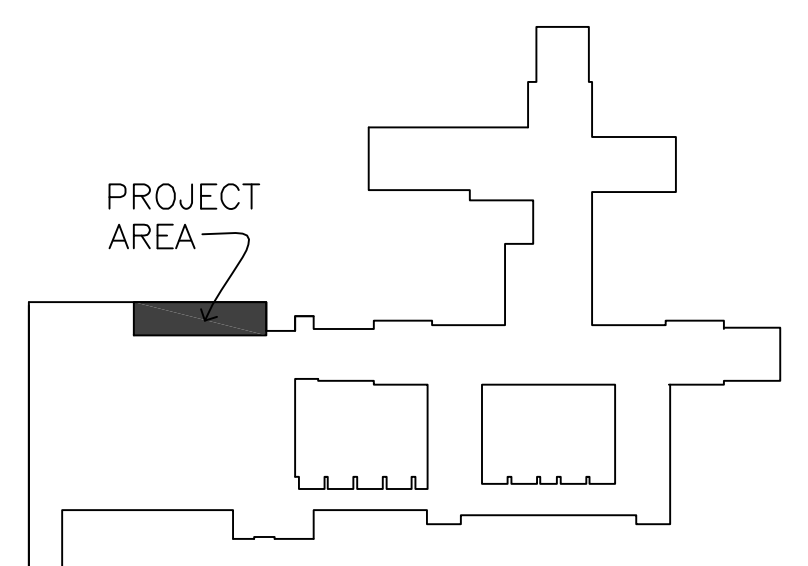


1 PLUMBING - PARTIAL 4TH FLOOR DEMOLITION PLAN
1/4" = 1'-0"





2 PLUMBING - PARTIAL 5TH FLOOR DEMOLITION PLAN
1/4" = 1'-0"

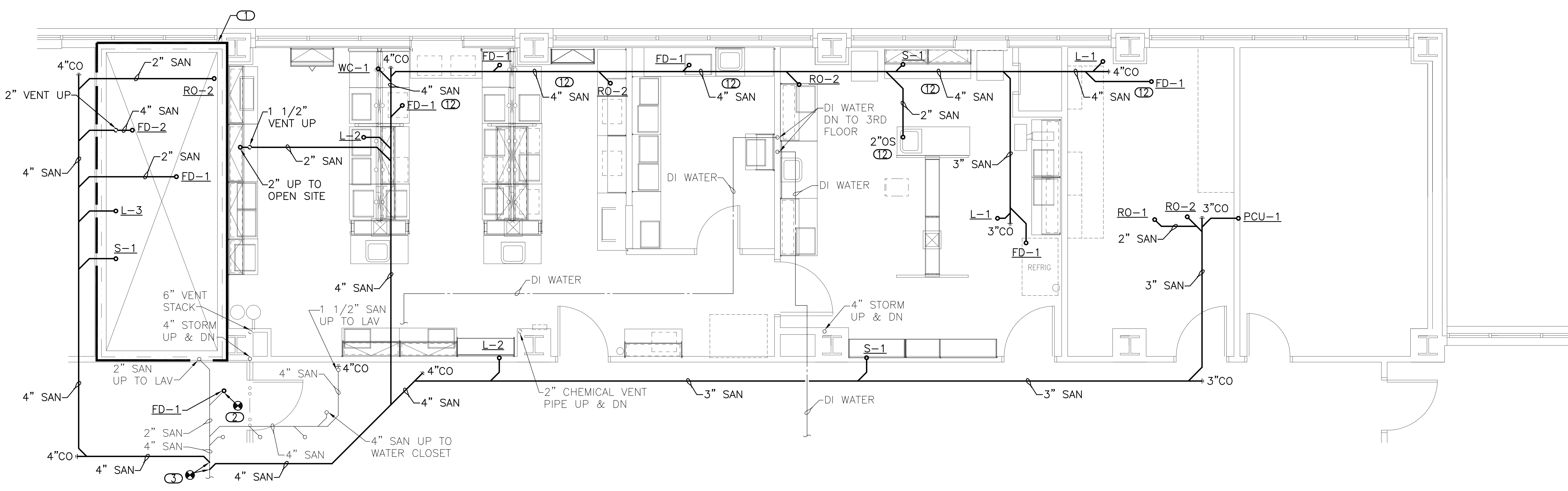
- KEYED NOTES**
- REMOVE 2" SAN FROM TWO DEMOLISHED SINKS. PROVIDE CLEANOUT PLUG AS SHOWN.
 - REMOVE EXISTING WALL MOUNTED LAVATORY AND ASSOCIATED COMPONENTS. PIPING SHALL REMAIN IN WALL TO BE CONNECTED TO DURING NEW CONSTRUCTION.
 - REMOVE EXISTING WALL MOUNTED WATER CLOSET AND ASSOCIATED COMPONENTS. PIPING SHALL REMAIN IN WALL TO BE CONNECTED TO DURING NEW CONSTRUCTION.
 - COORDINATE WITH ARCHITECT AND GC TO REMOVE SHOWER AND ALL ASSOCIATED COMPONENTS. REMOVE AND CAP 1/2" HOT AND COLD WATER PIPING AT MAINS. REMOVE SHOWER DRAIN AND TEMPORARILY PLUG FOR CONNECTION DURING NEW CONSTRUCTION. SHOWER DRAIN SHALL BE REPLACED WITH FLOOR DRAIN. COORDINATE WITH ARCHITECT FOR FLOOR FINISHING. SAW CUT AND PATCH FLOOR AS REQUIRED.
 - REMOVE AND CAP 1/2" HOT AND COLD WATER PIPING AT MAIN.
 - REMOVE AND CAP 1 1/2" VENT PIPE AT MAIN.
 - REMOVE AND CAP 3/4" HOT WATER RETURN PIPING AS SHOWN FOR CONNECTION DURING NEW CONSTRUCTION. COUPLE 1 1/4" HOT WATER MAIN AT POINT OF EXISTING HOT WATER RETURN CONNECTION FOR HOT WATER TO REMAIN IN OPERATION.
 - REMOVE SINK, CABINET, SPRAY HOSE, WALL CLEANOUT, AND ALL ASSOCIATED COMPONENTS. DEMO 1/2" HOT AND COLD WATER, 2" SAN, AND 1 1/2" VENT PIPING AND CAP AT MAINS.
 - COORDINATE WITH ARCHITECT AND GC FOR REMOVAL OF INTEGRAL STAINLESS STEEL SINK AND CASEWORK. REMOVE ALL ASSOCIATED COMPONENTS SERVING SINK. DEMO 1/2" HOT AND COLD WATER, 2" SAN, AND 1 1/2" VENT PIPING AND CAP AT MAINS.
 - COORDINATE WITH ARCHITECT AND GC FOR REQUIRED DEMOLITION FOR ACCESS TO CHASE FOR INSTALLATION OF NEW SANITARY PIPING SERVING 5TH FLOOR. SEE 1/P-201 FOR MORE INFORMATION.
 - COORDINATE EXISTING PIPING WITH MECHANICAL CONTRACTOR. RAISE, LOWER, OR REROUTE PIPING AS REQUIRED FOR NEW WORK.
- GENERAL NOTES:**
- SALVAGE ALL DEMOLISHED FIXTURES AND HAND OVER TO OWNER.
 - PC SHALL REMOVE AND REPLACE ALL CEILING TILES AS REQUIRED FOR INSTALLATION OF NEW PIPING IN 4TH CEILING SPACE.



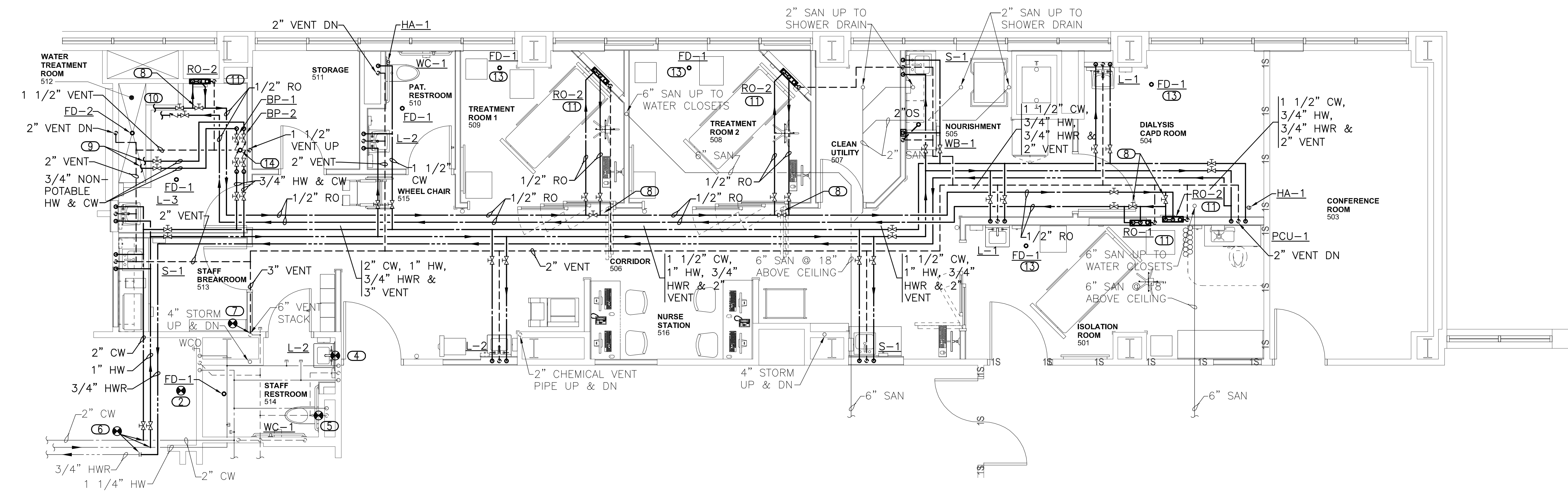
KEY PLAN
NOT TO SCALE

CONSULTANTS:		ARCHITECT/ENGINEERS:		Drawing Title	Project Title	Project Number	Office of Construction and Facilities Management Department of Veterans Affairs	
 engineers consultants commissioning MEP Associates, LLC 2400 Van Buren St. Suite 3404 Norman, OK 73072 Phone: 405.364.9924 Fax: 405.364.9936 www.mepasassociates.com CMP: 0121 MEP PROJECT NO.: R22-12-01				PLUMBING DEMOLITION PLANS	OKLAHOMA CITY VA DIALYSIS EXPANSION & RENOVATION	635-12-303		
Revisions:		Date		Approved: Project Director	Location	Building Number	Drawing Number	
					OKLAHOMA CITY, OK		P-101	
					Date	Checked	Drawn	
					DECEMBER 7, 2012	TCC	NCF	

three inches = one foot
one and one half inches = one foot
one inch = one foot
three quarters inch = one foot
one half inch = one foot
three eighths inch = one foot
one quarter inch = one foot
one eighth inch = one foot

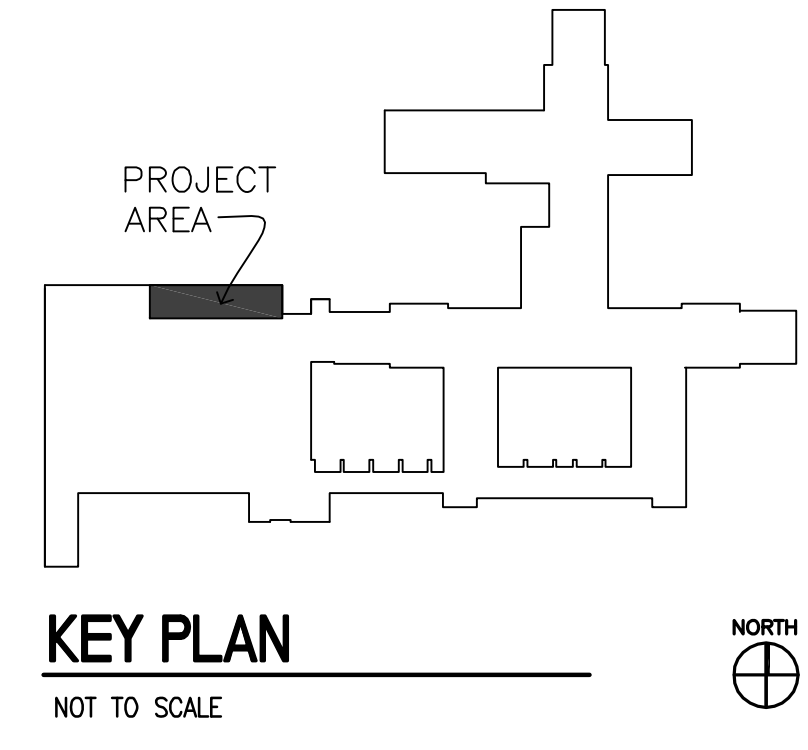


1 PLUMBING - PARTIAL 4TH FLOOR PLAN
1/4" = 1'-0"



2 PLUMBING - PARTIAL 5TH FLOOR PLAN
1/4" = 1'-0"

- KEYED NOTES**
- 1. COORDINATE WITH ARCHITECT AND GC FOR REQUIRED DEMOLITION FOR ACCESS TO CHASE FOR INSTALLATION OF NEW SANITARY PIPING SERVING 5TH FLOOR. VERIFY EXISTING DUCT CLEARANCES WITHIN CHASE. COORDINATE WITH ARCHITECT FOR REQUIRED ACCESS PANELS LOCATIONS AND SIZES. PANELS AND WALL REPAIR SHALL MAINTAIN 2 HOUR FIRE RATING. VERIFY ACCESSIBILITY IN CHASE AND ROUTE PIPING IN CHASE TO PENETRATE WALL ONCE, IF ALLOWED.
 - 2. CONNECT NEW 2" FLOOR DRAIN PIPING TO EXISTING 2" PIPING. VERIFY EXISTING P-TRAP AND REPLACE AS REQUIRED.
 - 3. CONNECT NEW 4" SAN TO EXISTING 4" SAN MAIN. VERIFY EXISTING ELEVATION AT POINT OF CONNECTION.
 - 4. CONNECT NEW 1/2" HOT AND COLD WATER AND 1 1/2" SAN SERVING NEW LAVATORY TO EXISTING PIPING IN WALL SERVING DEMOLISHED LAVATORY. OFFSET PIPING AS REQUIRED.
 - 5. CONNECT NEW 1 1/2" COLD WATER AND 4" SAN SERVING NEW WATER CLOSET TO EXISTING PIPING IN WALL SERVING DEMOLISHED WATER CLOSET. OFFSET PIPING AS REQUIRED.
 - 6. CONNECT NEW 2" COLD WATER, 1" HOT WATER, AND 3/4" HOT WATER RETURN TO EXISTING 2" COLD WATER, 1 1/4" HOT WATER, AND 3/4" HOT WATER RETURN. EXISTING ISOLATION VALVES ARE LOCATED ROUGHLY 18'-0" TO THE WEST IN CEILING ABOVE NURSES STATION.
 - 7. CONNECT NEW 3" VENT TO EXISTING 6" VENT STACK.
 - 8. PROVIDE NORMALLY CLOSED(HC) BYPASS VALVE FOR RO LOOP.
 - 9. PROVIDE 3/4" NON-POTABLE HOT & COLD WATER TO RO EQUIPMENT. COORDINATE WITH RO EQUIPMENT PROVIDER AND OWNER FOR FINAL CONNECTIONS AND LOCATIONS.
 - 10. PROVIDE 1/2" RO SUPPLY AND RETURN PEX PIPING TO RO EQUIPMENT. COORDINATE WITH RO EQUIPMENT PROVIDER AND OWNER FOR FINAL CONNECTIONS AND LOCATIONS.
 - 11. PROVIDE 1/2" RO PEX PIPING TO RO BOX. CONNECT DRAIN WITH P-TRAP AND VENT TO RO BOX. COORDINATE WITH RO BOX SUPPLIER FOR FINAL CONNECTIONS AND REQUIRED FITTINGS. PROVIDE CONTINUOUS BYPASS IN WALL FOR RO SYSTEM LOOP.
 - 12. COORDINATE ALL SANITARY PIPING IN 4TH FLOOR CEILING WITH EXISTING CONDITIONS. ROUTE SANITARY MAIN AS REQUIRED TO AVOID EXISTING PIPING. COORDINATE WITH MC FOR MECHANICAL PIPING.
 - 13. FLOOR DRAIN SHALL BE INSTALLED FLUSH WITH FINISHED, NON-SLOPED FLOOR.
 - 14. PROVIDE 2" OPEN SITE WITH 3" FUNNEL DRAIN ABOVE FLOOR. DRAIN BACKFLOW PREVENTERS AIR GAP TO OPEN SITE. COORDINATE WITH RO EQUIPMENT PROVIDER AND OWNER FOR FINAL CONNECTIONS AND LOCATIONS OF DRAIN AND BACKFLOW PREVENTERS.
- GENERAL NOTES:**
- SEE PLUMBING FIXTURE SCHEDULE ON SHEET P-001 FOR PIPE SIZES TO INDIVIDUAL FIXTURES.
 - PC SHALL REMOVE AND REPLACE ALL CEILING TILES AS REQUIRED FOR INSTALLATION OF NEW PIPING IN 4TH CEILING SPACE.
 - FLOOR SHALL BE X-RAYED IN REQUIRED LOCATIONS PRIOR TO CORE DRILLING FOR INSTALLATION OF NEW PLUMBING.



CONSULTANTS: engineers consultants commissioning MEP Associates, LLC 2400 Van Buren St. Suite 3404 Norman, OK 73072 Phone: 405.364.9926 Fax: 405.364.9936 www.mepassociates.com CNP 1/1/21 MEP PROJECT NO: R22-12/01		 		ARCHITECT/ENGINEERS: 	Drawing Title PLUMBING PLANS	Project Title OKLAHOMA CITY VA DIALYSIS EXPANSION & RENOVATION	Project Number 635-12-303 Building Number	Office of Construction and Facilities Management
Revisions:		Date		Approved: Project Director	Location OKLAHOMA CITY, OK	Date DECEMBER 7, 2012	Checked TCC	Drawn NCF

VA FORM 08-6231, OCT 1978

VA FORM 08-6231, OCT 1978