

March 4, 2013



ADDENDUM 2

Design of Office of Information & Technology Service, Project 654-11-228
VA Sierra Nevada Health Care System
975 Kirman Avenue
Reno, NV 89502

This ADDENDUM forms a part of the Contract Documents and modifies the original Bidding Documents and any previous Addenda as noted below. Acknowledge receipt of this Addendum in the space provided in the Bid Form. Failure to do so may subject Bidder to disqualification.

CIVIL:

No revisions at this time

LANDSCAPE:

No revisions at this time

ARCHITECTURAL:

No revisions at this time

STRUCTURAL:

PHASE 2: Building 10

See attached Structural Narrative and attached Drawings.

MECHANICAL AND PLUMBING:

No revisions at this time

FIRE PROTECTION:

No revisions at this time

ELECTRICAL AND TELECOMM:

No revisions at this time

End of Addendum 2

Respectfully,

Eric Sikora, AIA

ADDENDUM 2

Design of Office of Information & Technology Service, Project 654-11-228

VA Sierra Nevada Health Care System

975 Kirman Avenue

Reno, NV 89502

STRUCTURAL:

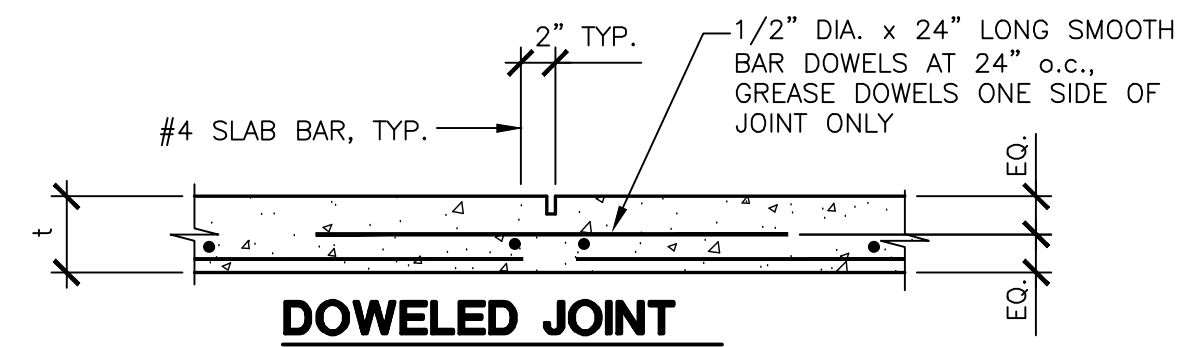
Drawings:

Phase Two: Building 10

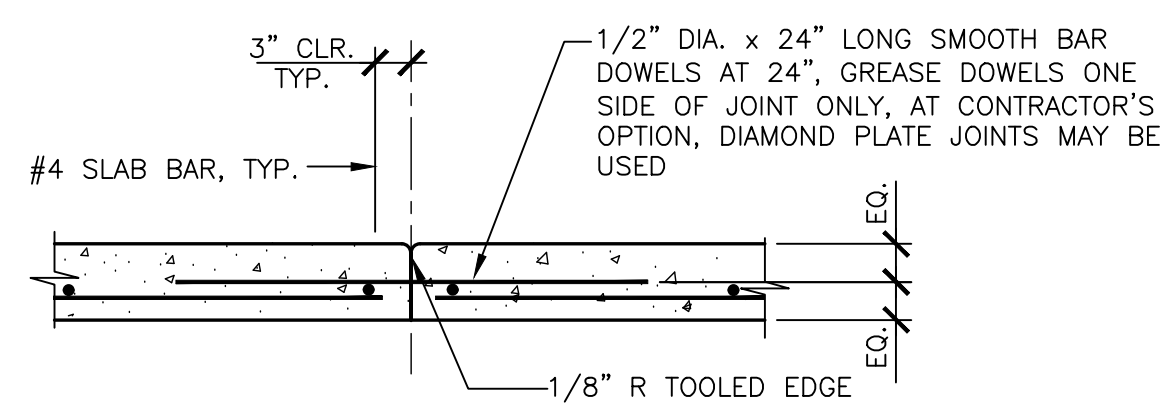
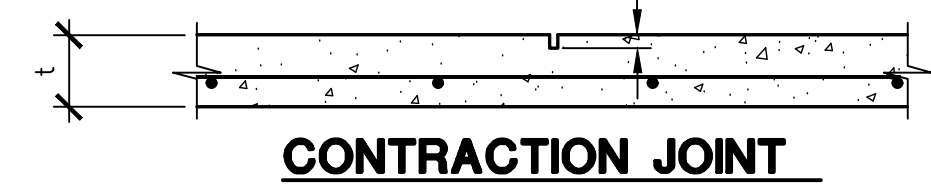
Sheet 10-SE-1.1: Fill-in access floor area with new concrete slab on grade and aggregate fill.
See 10-SE-1.1x2 dated 3-1-13 attached.

Sheet 10-SE-4.2: Add detail 7 showing new concrete slab on grade and aggregate fill at access
floor fill-in area.
See 10-SE-4.2x2 dated 3-1-13 attached.

three inches = one foot
one and one half inches = one foot
one inch = one foot
three quarters inch = one foot
one half inch = one foot
one quarter inch = one foot
one eighth inch = one foot
one sixteenth inch = one foot

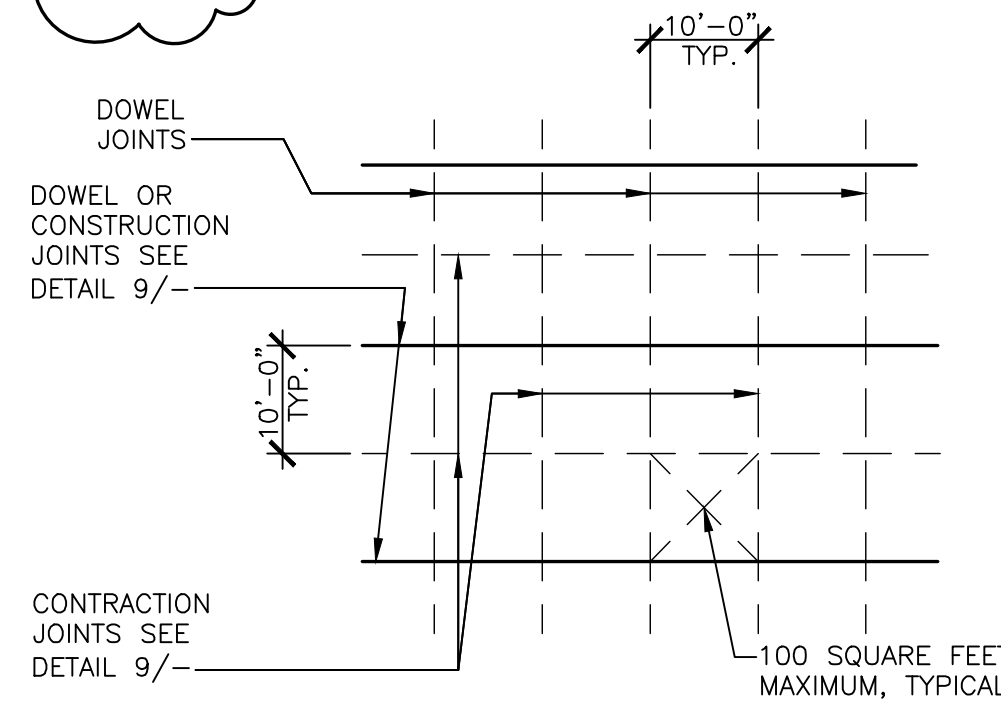


SAW CUT 1/8" WIDE CONTRACTION JOINT TO A DEPTH OF 1/4 MIN. SAWING MUST OCCUR AS SOON AS CONCRETE SURFACE IS FIRM ENOUGH SO CONCRETE WILL NOT BE DAMAGED, BUT NO LATER THAN 12 HOURS AFTER CONCRETE HAS BEEN POURED



JOINTS IN SLAB ON GRADE

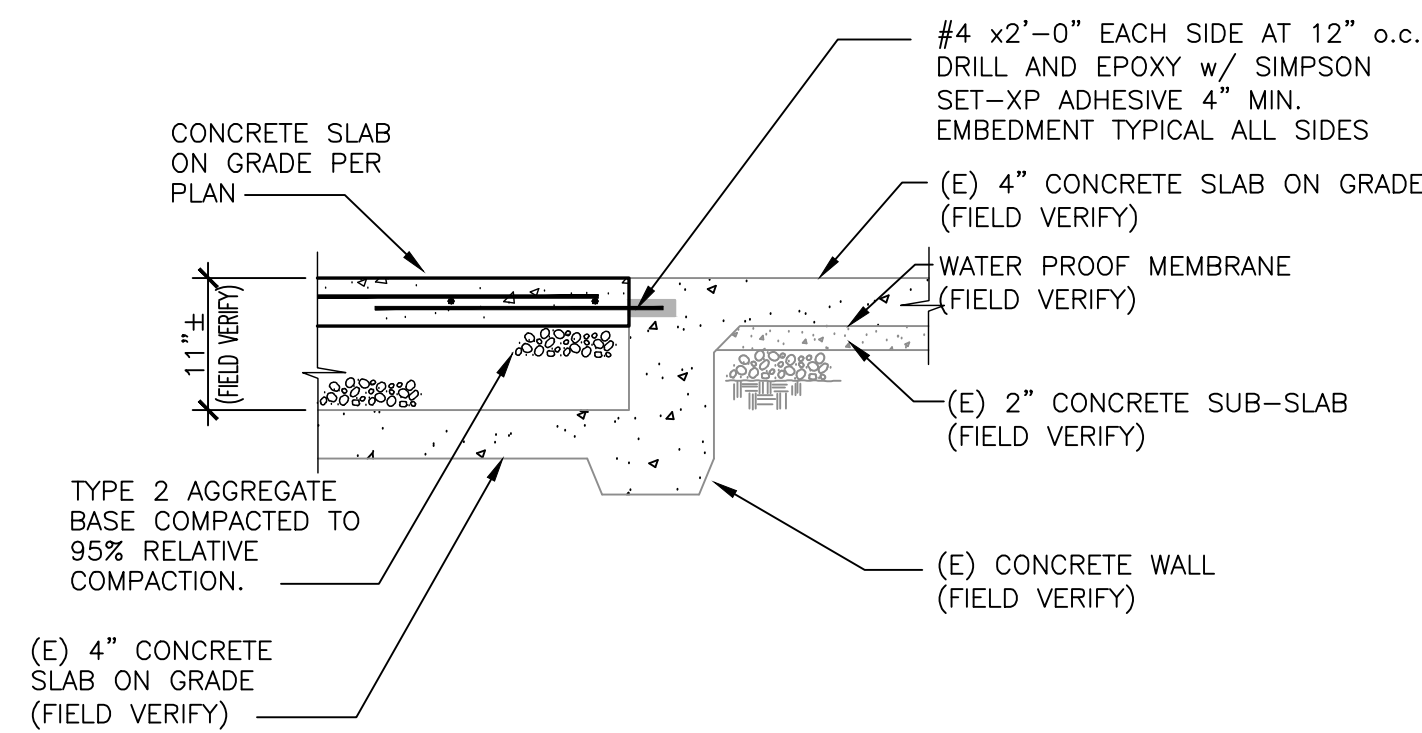
C-000-111/N.T.S.



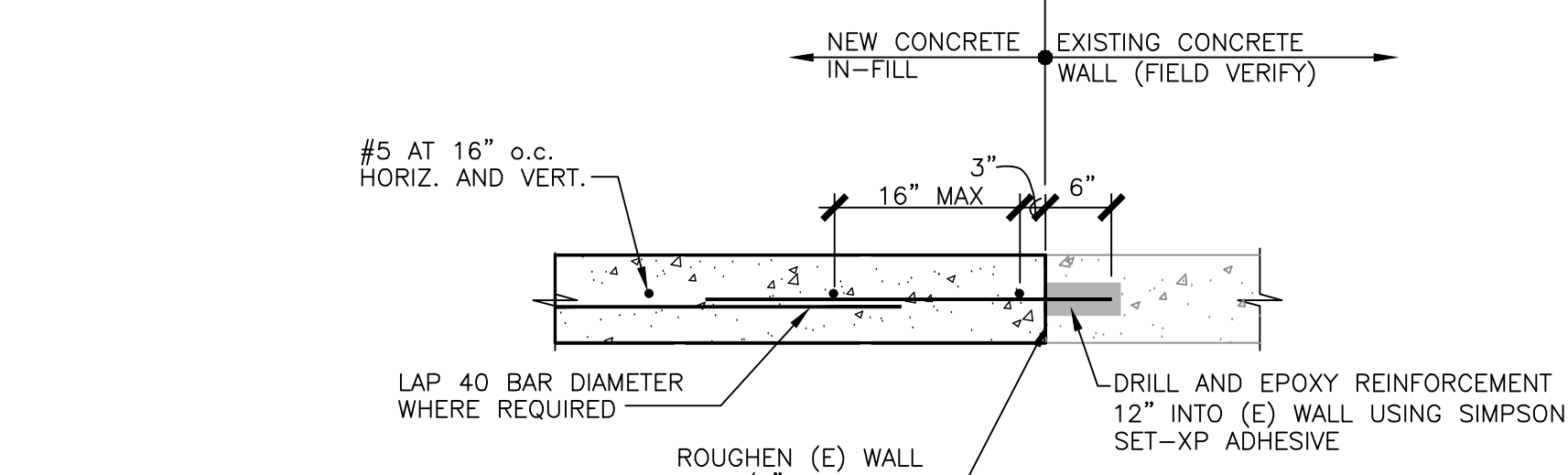
- NOTES:**
1. SLAB SHALL BE POURED IN STRIP PATTERN. STRIPS MAY BE AS LARGE OF POURS AS PRACTICAL.
 2. CONTRACTORS SHALL OBTAIN ARCHITECT'S APPROVAL FOR ALL JOINT LOCATIONS, POUR METHOD AND SIZE.
 3. CONTROL JOINTS SHALL BE LOCATED AT AREAS THAT INDUCE CRACKING SUCH AS, BUT NOT LIMITED TO, RE-ENTRANT CORNERS, COLUMNS, WALLS, ETC.

METHOD OF POURING SLAB ON GRADE

C-000-110/N.T.S.

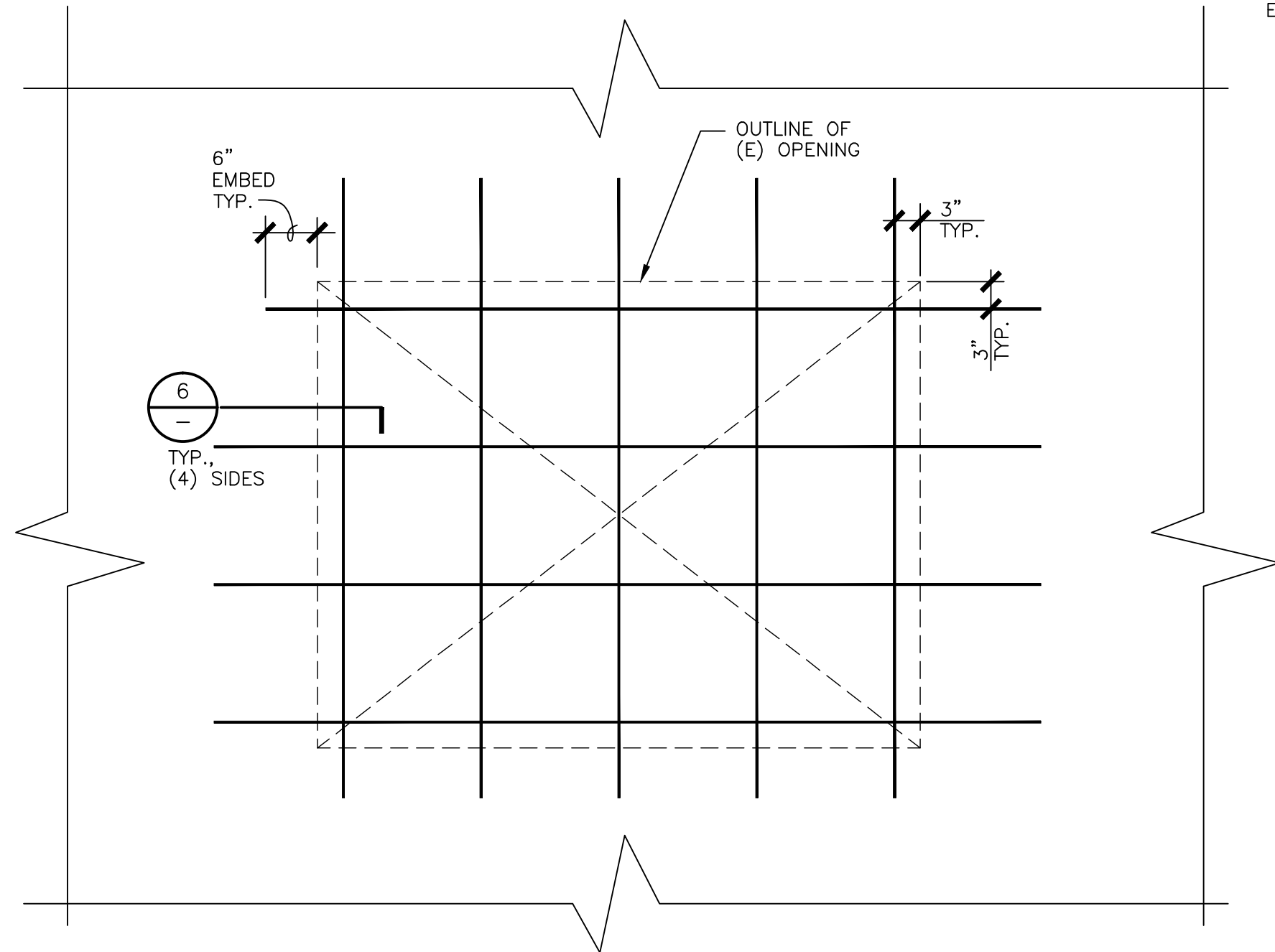


DETAIL

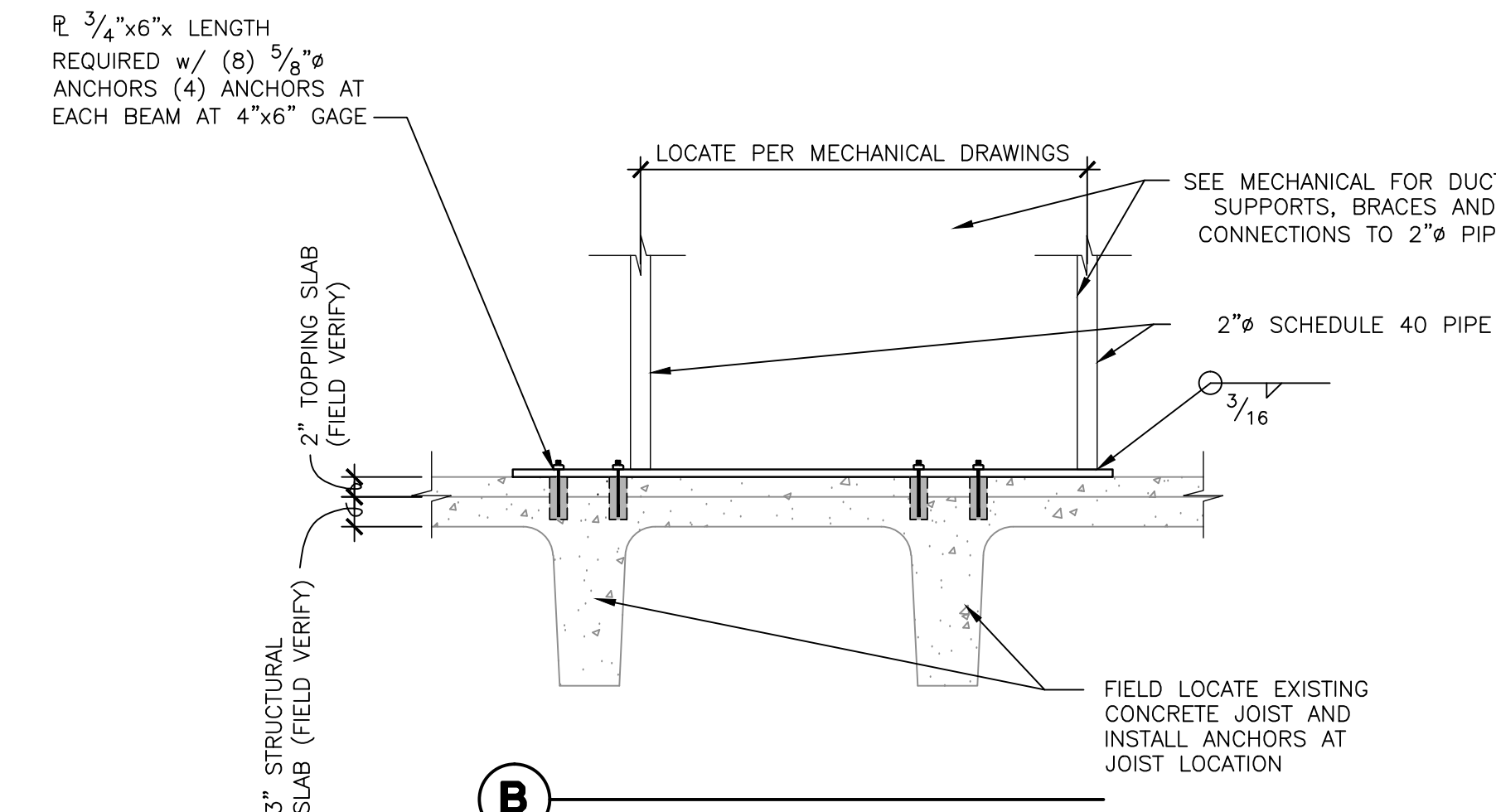


DETAIL

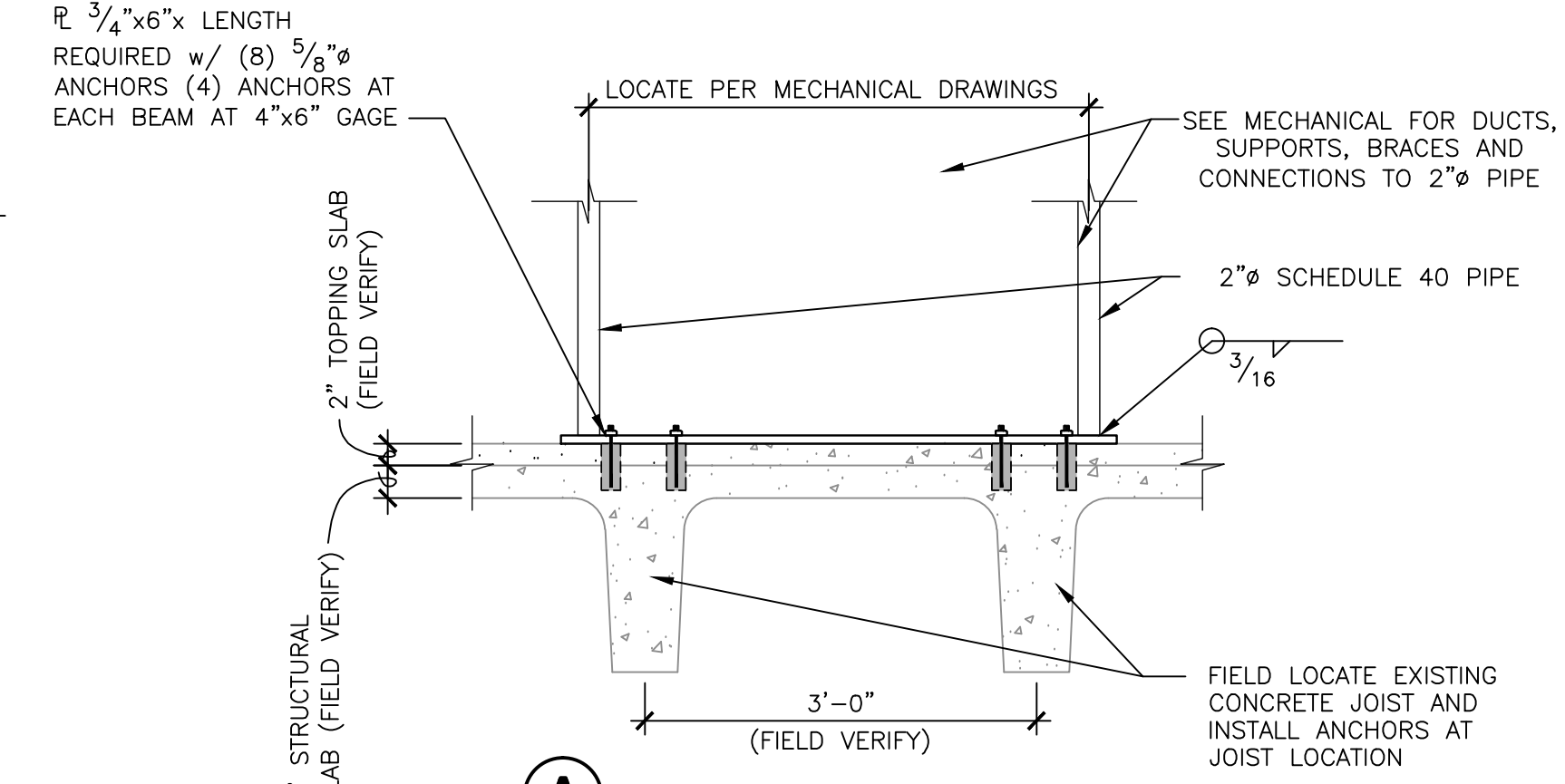
N.T.S.



DETAIL

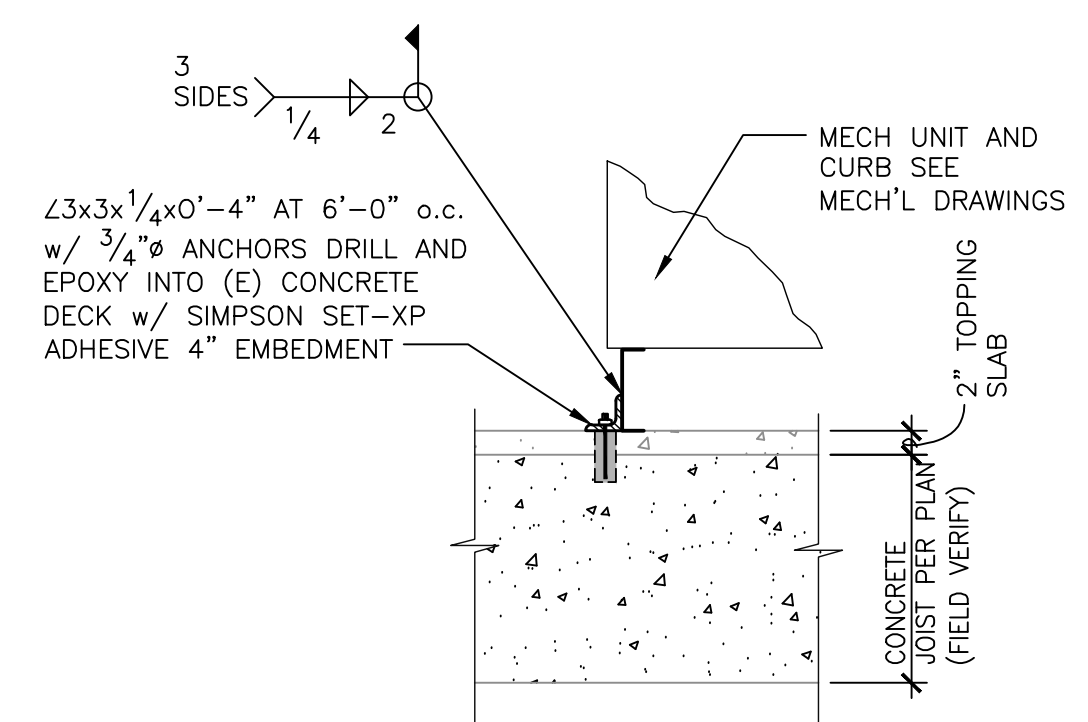


DETAIL

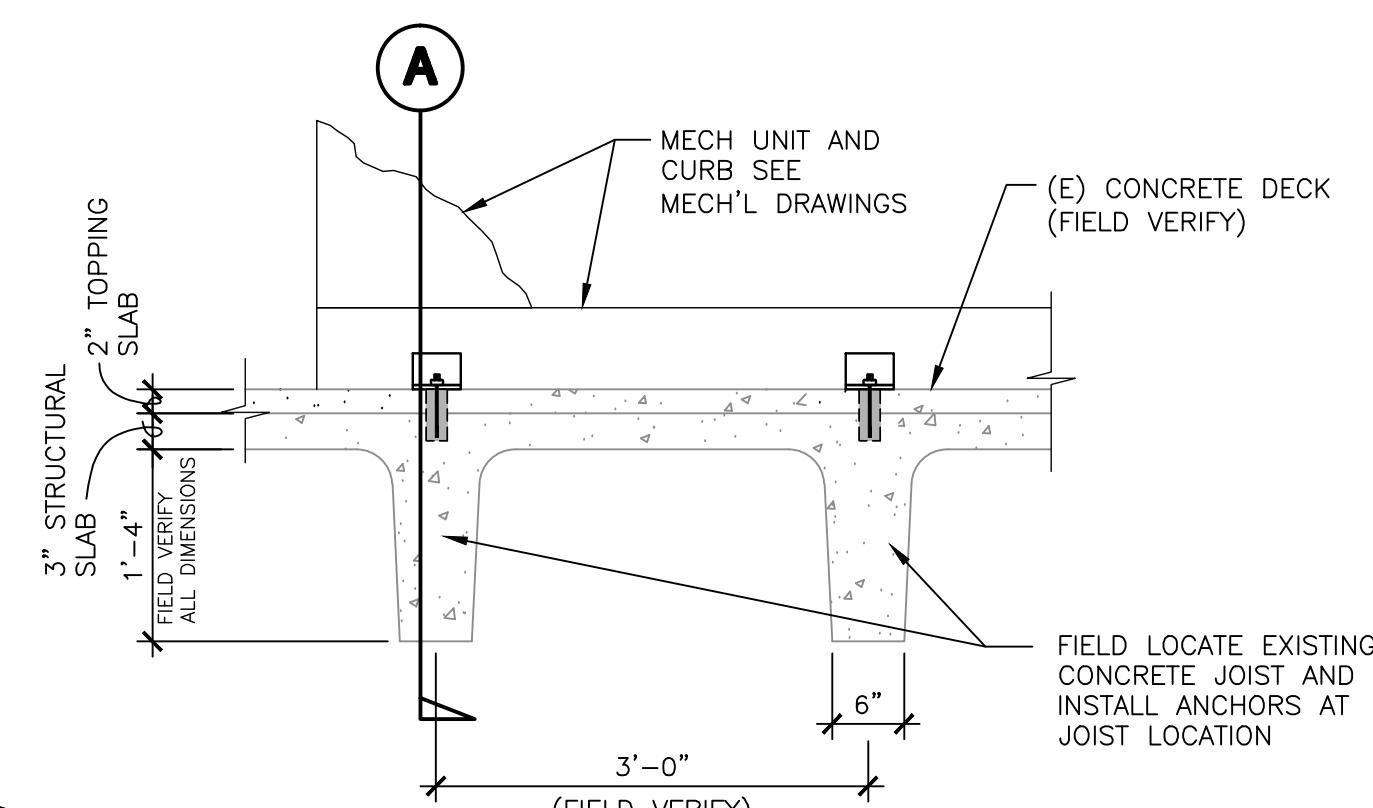


DETAIL

N.T.S.

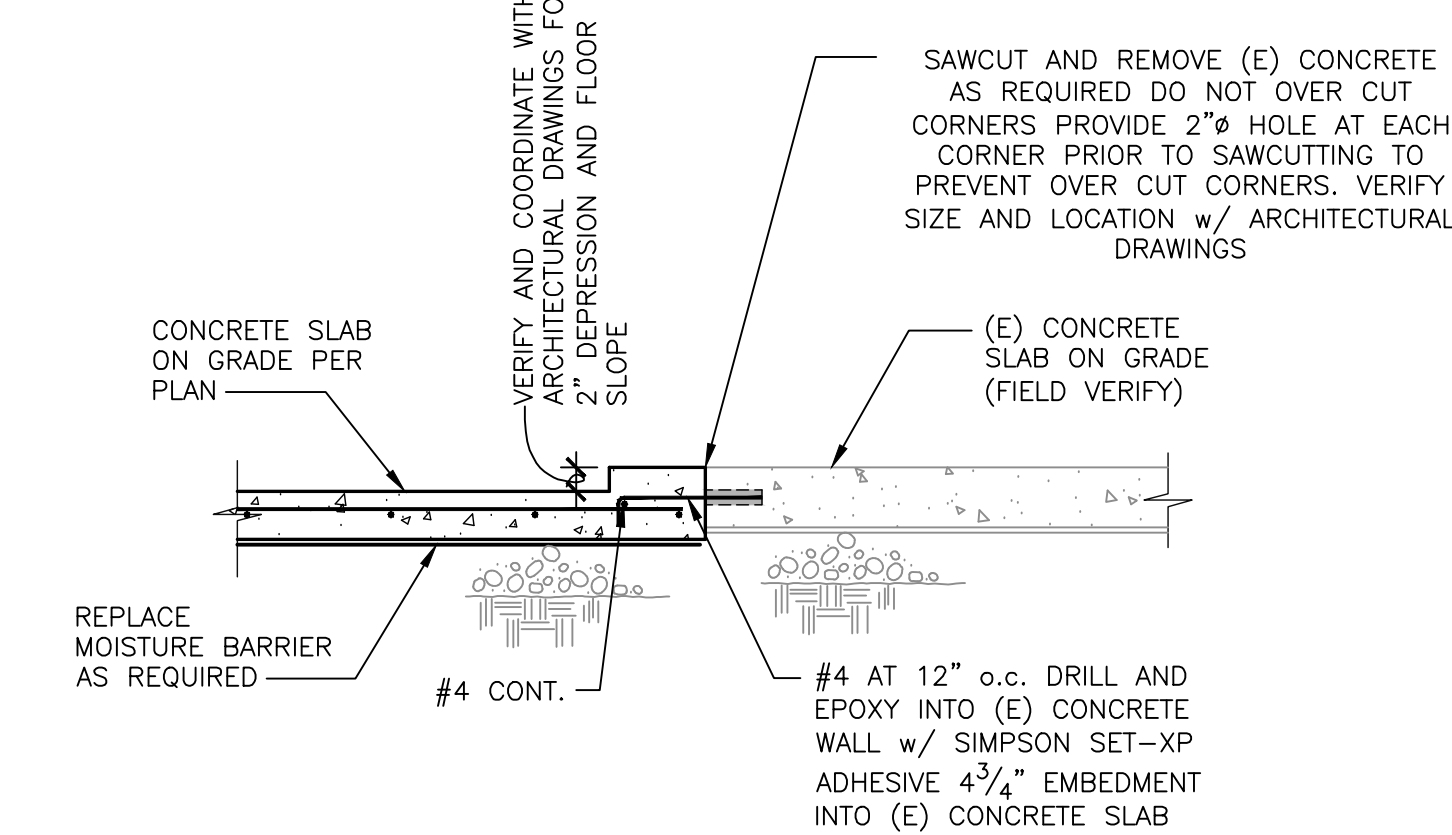


SECTION



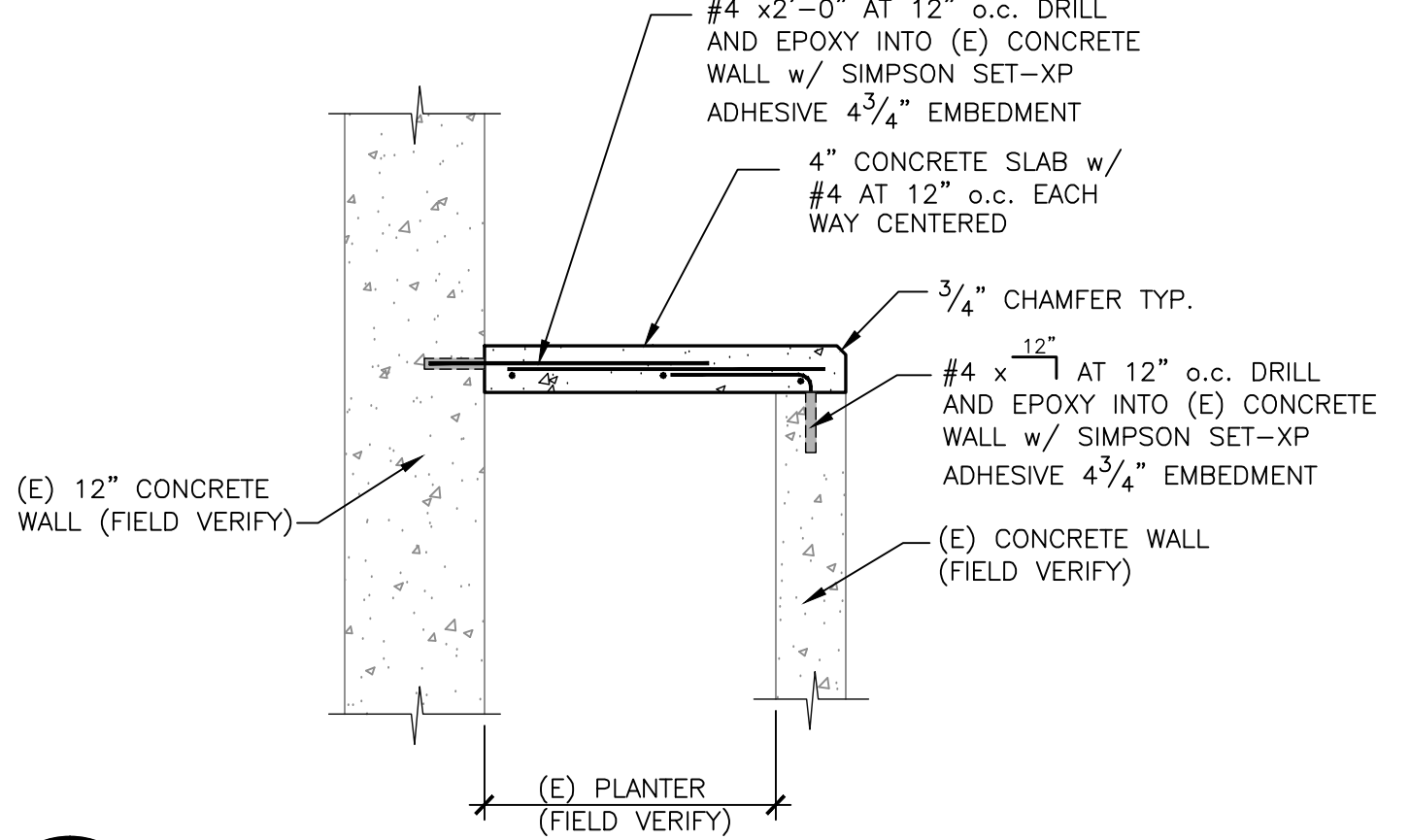
DETAIL

N.T.S.



DETAIL

N.T.S.



DETAIL

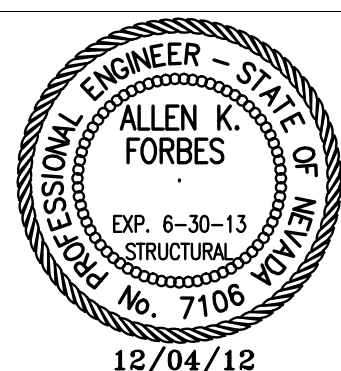
N.T.S.

ADENDUM 2 3/1/13

CONSULTANTS:

FORBES ENGINEERING
59 Damonte Ranch Pkwy, Suite B181
Reno, Nevada 89521
Ph. (775) 857-3744
Fax (775) 857-3742

© COPYRIGHT 2006 ALL RIGHTS RESERVED. ALL DOCUMENTS HEREIN ARE PROTECTED UNDER COPYRIGHT LAWS OF THE UNITED STATES. ANY UNAUTHORIZED REPRODUCTION OR DUPLICATION IS PROHIBITED.



ARCHITECT/ENGINEERS:

SIKORA ARCHITECTURE
489 CORVALLIS COURT
RENO, NEVADA 89501
775-852-8800
info@sikora-architecture.com
JOB: 11-007

Drawing Title
DETAILS

Approved: Project Director

Project Title **Design of
Office of Information
& Technology Services**

Location **975 KIRMAN AVE.
RENO, NV 89502**

Date
12-4-12

Checked
AKF

Drawn
TES

Project Number
654-11-228

Building Number
10

Drawing Number
10-SE-4.2x2

Dwg. 6 of 6

Office
of
Construction
and
Facilities
Management: