
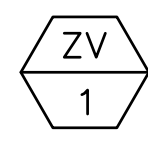

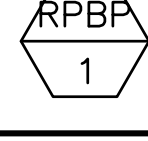
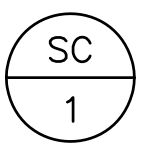

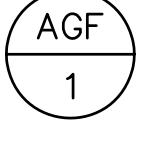


three inches = one foot
one and one half inches = one foot
one inch = one foot
three quarters inch = one foot
one half inch = one foot
three eighths inch = one foot
one quarter inch = one foot
one eighth inch = one foot

PLUMBING EQUIPMENT SCHEDULE	
ITEM	DESCRIPTION
 1	MEDICAL GAS OUTLET: (OXYGEN): CHEMETRON 500 SERIES QUICK CONNECT MEDICAL GAS OUTLET ZINC PLATED ROUGH-IN PLATE, DIE-CAST ZINC CHROME PLATED FINISH PLATE, MODEL #64-01-5001P FOR OXYGEN U.S. COLOR CODES. (MEDICAL VACUUM): CHEMETRON 500 SERIES QUICK CONNECT MEDICAL GAS OUTLET ZINC PLATED ROUGH-IN PLATE, DIE-CAST ZINC CHROME PLATED FINISH PLATE, MODEL #64-01-5002P FOR VACUUM U.S. COLOR CODES. (MEDICAL AIR): CHEMETRON 500 SERIES QUICK CONNECT MEDICAL GAS OUTLET ZINC PLATED ROUGH-IN PLATE, DIE-CAST ZINC CHROME PLATED FINISH PLATE, MODEL #64-01-5003P FOR AIR U.S. COLOR CODES. (NITROUS OXIDE): CHEMETRON 500 SERIES QUICK CONNECT MEDICAL GAS OUTLET ZINC PLATED ROUGH-IN PLATE, DIE-CAST ZINC CHROME PLATED FINISH PLATE, MODEL #64-01-5004P FOR NITROUS OXIDE U.S. COLOR CODES. (WAGD): CHEMETRON 500 SERIES QUICK CONNECT MEDICAL GAS OUTLET ZINC PLATED ROUGH-IN PLATE, DIE-CAST ZINC CHROME PLATED FINISH PLATE, MODEL #64-01-5006P FOR WAGD U.S. COLOR CODES.
 1	ZONE VALVE: CHEMETRON ZONE VALVE BOXES 18 GA. SHEET STEEL WITH AIR DRIED LACQUER FINISH ANODIZED ALUMINUM COVER FRAME WITH PULL RING. FIVE VALVE BOX ASSEMBLY CATALOG #77-85-22223. WINDOW SHALL CONCEAL THE PIPING AND VALVES AND LABELED "CAUTION MEDICAL GAS SHUT-OFF VALVES - CLOSE ONLY IN EMERGENCY". PROVIDE ZONE VALVE GAUGES -(1) OXYGEN 0-100 PSI #77-90-0571, (1)VACUUM 0-30HG #77-90-0572 AND (1)AIR 0-100 PSI #77-90-0571, (1)NITROUS OXIDE #77-90-0571, AND (1)WAGD #77-90-0572.
 1	MEDICAL GAS ALARM: CHEMETRON "IMPACT" SERIES AREA ALARM #74-15-333442, FOR 3 PRESSURE MODULES, 2 VACUUM MODULES, AND 1 FUTURE. 115 V/1ø/60 HZ.
 1	REDUCED PRESSURE BACKFLOW PREVENTER: 1/2" WILKINS #975XLST STAINLESS STEEL, LEAD FREE BACKFLOW PREVENTER FOR DE-IONIZED WATER SUPPLY LINE.

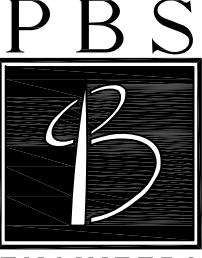
NOTE: ALL DOMESTIC WATER PIPING, FITTINGS AND FAUCETS TO BE LEAD-FREE PER AB 1953.

PLUMBING FIXTURE SCHEDULE							
SYMBOL	DESCRIPTION	ROUGH-IN CONNECTIONS					REMARKS
		WASTE	TRAP	VENT	COLD WATER	HOT WATER	
 1	SCRUB SINK JUST #J-770-2-S	3"	3"	2"	3/4"	3/4"	16 GA. TYPE 304 SEAMLESS WELDED STAINLESS STEEL, REAR INTEGRAL SUPPORT BRACKET AND 14 GA. STAINLESS STEEL WALL CLIPS. DRAIN PUNCH #35 CENTERED FOR JUST #J-35-SSF DRAIN. INCLUDE (2)#JSGN-6M DECK MOUNTED, W/#JSGN-6M-AC, PLUG-IN POWER ADAPTER, SENSOR-OPERATED FAUCET WITH MANUAL OVERRIDE AND LAMINAR FLOW CONTROL; #JTM-47 THERMOSTATIC MIXING VALVE, #J-35-SSF STAINLESS STEEL FLAT GRID STRAINER; #JT-150 CAST BRASS P-TRAP, AND REMOVEABLE PLEXIGLASS PARTITION.
 1	WATER HAMMER ARRESTER	-	-	-	-	-	PRECISION PLUMBING PRODUCTS MODEL # SC-750, 3/4" NPT BRASS, BARREL FABRICATED OF TYPE "K" HARD DRAWN COPPER, NORMAL OPERATING PRESSURE 0 TO 200 P.S.I.G. AND MAXIMUM SPIKE PRESSURE 400 P.S.I.G. LOCATE BEHIND STAINLESS STEEL ACCESS PANEL.
 1	AIR GAP FITTING	3"	3"	2"	-	-	JAY R. SMITH #3955S DUCO CAST IRON AIR GAP FITTING WITH NO-HUB OUTLET. LOCATE BEHIND STAINLESS STEEL ACCESS PANEL.

PIPE MATERIAL TABLE			
SERVICE	PIPE	FITTINGS	REMARKS
DOMESTIC WATER SYSTEM	SEAMLESS COPPER TUBING, TYPE L ABOVE GROUND, DRAWN TEMPER, ASTM B88, TYPE K BELOW GROUND	ANSI B16.18, CAST COPPER ALLOY SOLDER JOINT PRESSURE FITTINGS.	JOINTS: ASTM B32, SOLDER GRADE 95TA
ACID WASTE & VENT SYSTEM (ABOVE GROUND)	ASTM D4101 SCHEDULE 40 POLYPROPYLENE PIPE AND FITTINGS. ASTM F1412 FLAME RETARDANT	FITTINGS: MECHANICAL JOINT COUPLINGS.	PIPE AND FITTINGS: MANUFACTURED BY ENFIELD, ORION, OR LAB LINE.
CONDENSATE DRAIN	DWV COPPER TUBING: ASTM B88, TYPE L HARD DRAWN.	WROUGHT COPPER, SOLDER - JOINT, ANSI B16.22 OR CAST BRONZE ANSI B16, 23, ANSI 16, 18	JOINTS: ASTM B32, SOLDER GRADE 95TA
MEDICAL GASES	SEAMLESS HARD DRAWN COPPER TUBING, TYPE L ABOVE GROUND, ASTM B819	WROUGHT COPPER, BRAZED.	BRAZING FILLER METALS: AWS A5.8/A5.8M, BCuP SERIES, COPPER-PHOSPHORUS ALLOYS.
DE-IONIZED WATER	UNPIGMENTED KYNAR POLYVINYLDENE FLUORIDE, SCHEDULE 80, ASTM D3222, ASTM D1785	FITTINGS: IPS SOCKET-TYPE	JOINING METHOD: SOCKET FUSION EQUIPMENT, BY NIBCO.

SCHEMATIC DESIGN SUBMISSION	12/14/2011
65% DESIGN DEVELOPMENT	1/23/2012
65% CONSTRUCTION DOCUMENTS	3/16/2012
100% CONSTRUCTION DOCUMENTS	4/20/2012
Revisions:	Date

CONSULTANTS:



ENGINEERS

2100 East Route 66, Suite 101
Glendora, California 91740-4623
Tel: (626) 650-0350
Fax: (626) 650-0352
WWW.PBSENGINEERS.COM
Job No. 2011-056-00
Mechanical and Electrical Consulting Engineers

ARCHITECT/ENGINEERS:



ARCHITECTS INC

3920 E. CORONADO STREET, SUITE 201
ANAHEIM CALIFORNIA 92807
1000 S FREMONT AVE, UNIT 53,
BLDG. A1, SUITE 1218
ALHAMBRA CALIFORNIA 91803
www.SRDarchitectsinc.com
714 688 0212 • 626 202 0546 PH. • 714 688 0244 FAX

Drawing Title

PLUMBING SCHEDULES

Approved Project Director

Project Title

A/E DESIGN TO EXPAND EP LAB

Location

San Diego, CA

Date

4-20-2012

Checked

NP.

Drawn

JM.

Project Number

664-11-202

Building Number


X-XXX

Drawing Number

PL-002

Dwg of XX

Office of Construction and Facilities Management

Department of Veterans Affairs

100% CONSTRUCTION DOCUMENTS

three inches = one foot

one and one half inches = one foot

one inch = one foot

three quarters inch = one foot

one half inch = one foot

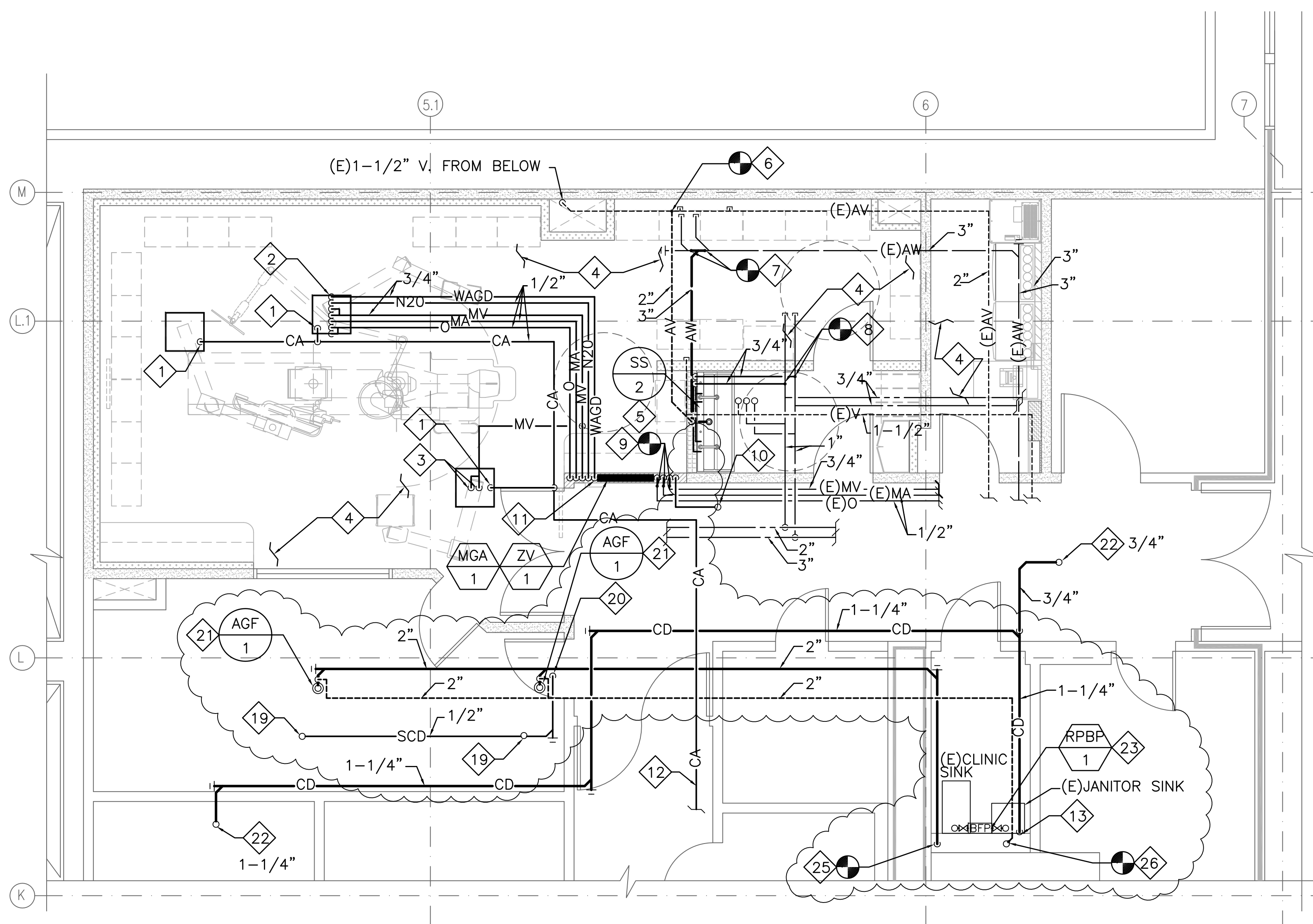
three eighths inch = one foot

one quarter inch = one foot

one eighth inch = one foot

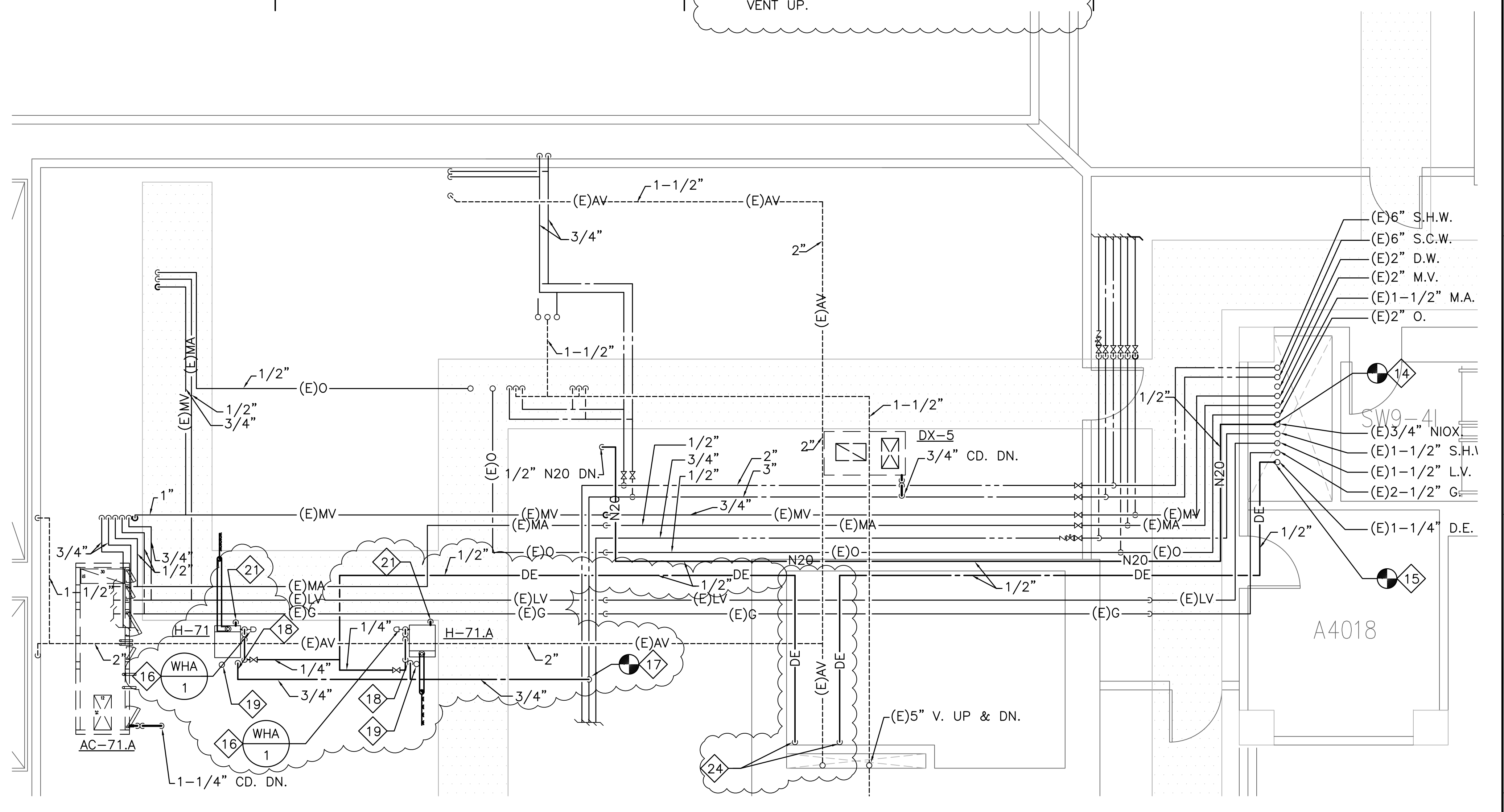
P:\2011\2011-056-00\WPS\PL-101.dwg Mar 01, 2013 - 12:29pm

VA FORM 08-6231



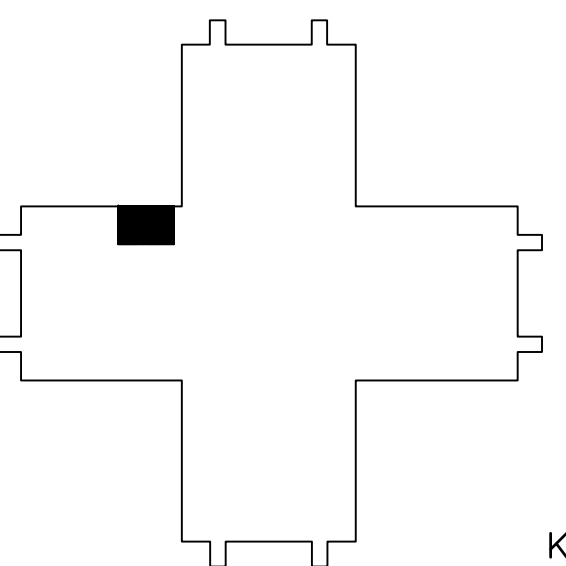
PLUMBING REMODEL 4TH FLOOR PLAN

SCALE: 1/4"=1'-0"



PLUMBING REMODEL 4TH FLOOR INTERSTITIAL PLAN

SCALE: 1/4"=1'-0"



KEYPLAN

100% CONSTRUCTION DOCUMENTS

SCHEMATIC DESIGN SUBMISSION	12/14/2011
65% DESIGN DEVELOPMENT	1/23/2012
65% CONSTRUCTION DOCUMENTS	3/16/2012
100% CONSTRUCTION DOCUMENTS	4/20/2012
Revisions:	Date

CONSULTANTS:

PBS
ENGINEERS
2100 East Route 66, Suite 101
Glendora, California 91740-4623
Tel: (626) 650-0350
Fax: (626) 650-0352
WWW.PBSENGINEERS.COM
Job No. 2011-056-00
Mechanical and Electrical Consulting Engineers

ARCHITECT/ENGINEERS:



3920 E. CORONADO STREET, SUITE 201
ANAHEIM CALIFORNIA 92807
1000 S FREMONT AVE, UNIT 53,
BLDG. A1, SUITE 1218
ALHAMBRA CALIFORNIA 91803
www.SRDarchitectsinc.com
714 688 0212 • 626 202 0546 PH. • 714 688 0244 FAX

Drawing Title

PLUMBING REMODEL PLANS

Approved Project Director

Project Title

A/E DESIGN TO EXPAND
EP LAB

Location

San Diego, CA

Date

4-20-2012

Checked

NP.

Drawn

JM.

Project Number

664-11-202

Building Number

X-XXX

Drawing Number

PL-101

Dwg

of XX

Office of
Construction
and Facilities
Management

