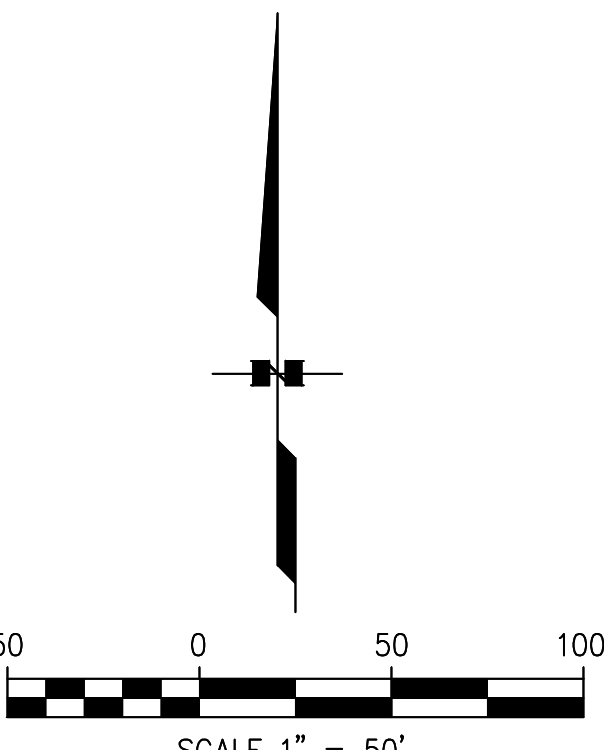
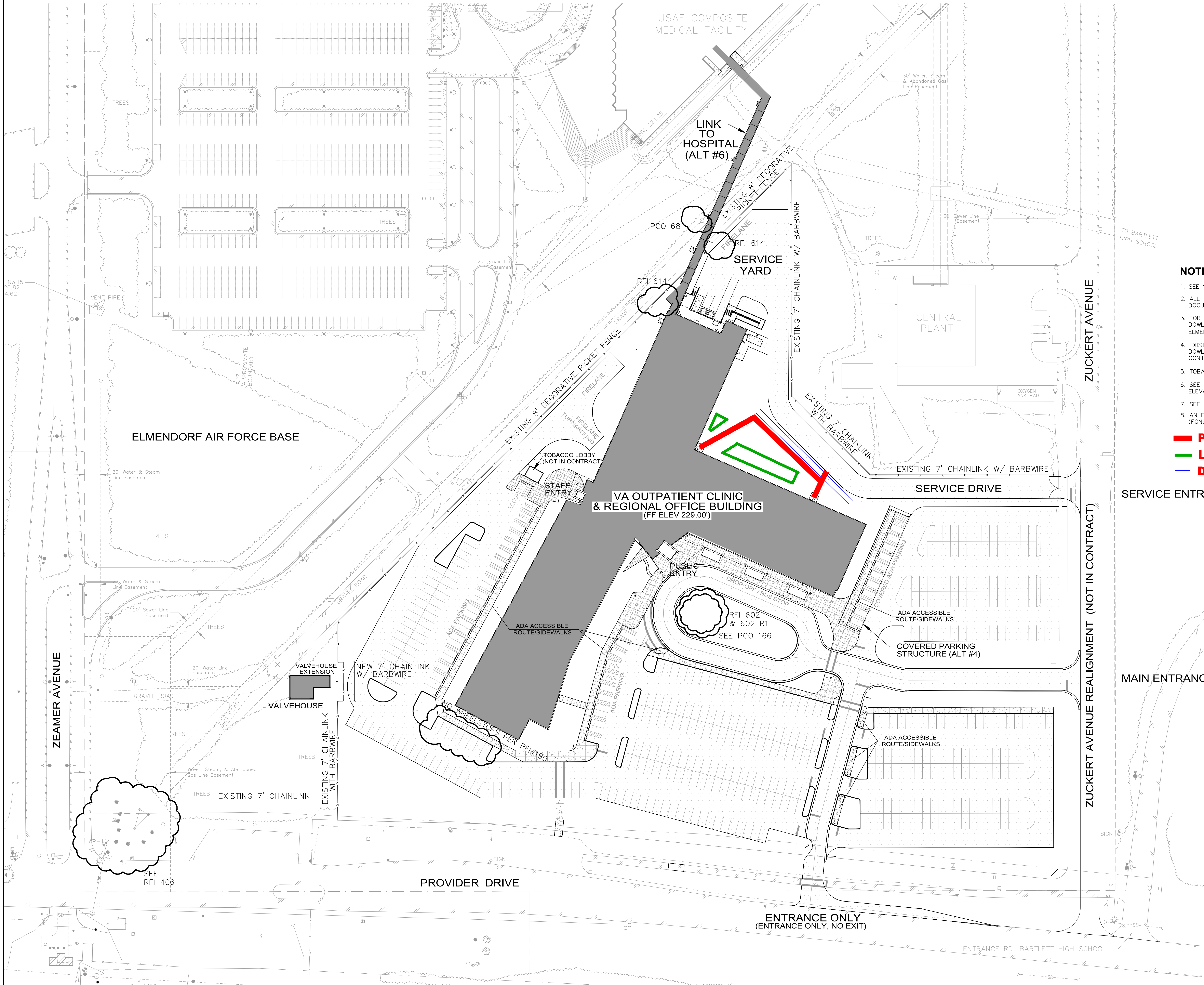


three inches = one foot
one and one half inches = one foot
one inch = one foot
three quarters inch = one foot
one half inch = one foot
three eighths inch = one foot
one quarter inch = one foot
one eighth inch = one foot



- NOTE**
1. SEE SHEET GS01, "EXISTING CONDITIONS SEPT 28, 2005", FOR TOPOGRAPHIC INFORMATION.
 2. ALL TOPOGRAPHIC INFORMATION OUTSIDE THE SITE BOUNDARY IS FROM HOSPITAL DESIGN DOCUMENTS AND IS FOR INFORMATION ONLY AND HAS NOT BEEN FIELD VERIFIED.
 3. FOR EXISTING SOILS INFORMATION REFER TO THE FOLLOWING REPORT: DOWL ENGINEERS, SUBSURFACE EXPLORATION, VETERAN'S AFFAIRS OUTPATIENT CLINIC, ELMENDORF AIR FORCE BASE, ALASKA, SEPTEMBER 2005.
 4. EXISTING FENCING ALONG THE WEST AND NORTH PROPERTY WERE INSTALLED AFTER DOWL'S TOPOGRAPHIC SURVEY FOR SHEET GS01, "EXISTING CONDITIONS SEPT 28, 2005". CONTRACTOR SHALL CONFIRM FENCE LOCATION.
 5. TOBACCO LOBBY IS NOT IN THIS CONTRACT. LOBBY TO BE INSTALLED AT A LATER DATE BY THE VA.
 6. SEE SHEETS GS401, GS402, GS403, GS404 & GS410 FOR DIMENSIONS, ELEVATIONS AND COORDINATES.
 7. SEE SHEET GS506 FOR CONCRETE SIDEWALK JOINT PATTERNS AND DIMENSIONS.
 8. AN ENVIRONMENTAL ASSESSMENT HAS BEEN COMPLETED AND A FINDING OF NO SIGNIFICANT IMPACT (FONS) ISSUED. SEE DIVISION 01 OF THE SPECIFICATIONS FOR DOCUMENTS.
- PROPOSED SIDEWALK**
LANDSCAPING
DITCH

SERVICE ENTRANCE

LEGEND (PROPOSED)
NOTE: SEE SHEET GS01 FOR EXISTING LEGEND

PROPOSED	DESCRIPTION
[Symbol]	PROPERTY LINE
[Symbol]	BUILDING
[Symbol]	CONCRETE SIDEWALK
[Symbol]	CONCRETE CURB
[Symbol]	ASPHALT CONCRETE PAVEMENT
[Symbol]	FENCE
[Symbol]	PARKING STALLS
[Symbol]	BOLLARD
[Symbol]	SIGN - TRAFFIC
[Symbol]	SIGN - MAJOR
[Symbol]	DRAINAGE ARROW
[Symbol]	ADA CURB-SIDEWALK RAMP
[Symbol]	COORDINATE NUMBER
[Symbol]	ELEVATION

MAIN ENTRANCE

PARKING TABLE

71	CLIENT/PATIENT PARKING STALLS
337	STAFF/GOVERNMENT VEHICLE PARKING STALLS
1	UFAS-ADA VAN STALLS
19	UFAS-ADA STALLS
4	VA-ADA VAN STALLS
21	VA-ADA STALLS
453	TOTAL STALLS PROVIDED

CD - FULLY SPRINKLERED

Revisions: RECORD DRAWINGS	Date: 11/10/10	CONSULTANTS:	This record drawing has been prepared from information furnished by others. The Architect and Engineers of Record assume no responsibility for the accuracy or completeness of this record drawing or for any errors or omissions that may have been incorporated into it. Those relying on this record document are advised to obtain independent verification of its accuracy.	ARCHITECT/ENGINEERS: LIVINGSTON STONE ARCHITECTURE ENGINEERING PLANNING INTERIOR DESIGN 3900 ARCTIC BOULEVARD SUITE 301 ANCHORAGE, ALASKA 99503-5799 TEL 907 562 8058 FAX 907 561 4528 in association with SMITHGROUP	Drawing Title OVERALL SITE PLAN Approved: Project Director	Project Title New VA Outpatient Clinic and Regional Office Building Location Anchorage, Alaska Date 02/26/07 Checked CKK Drawn CKK	Project Number 463-500 Building Number 100 Drawing Number GS101	Office of Facilities Management Department of Veterans Affairs
---	---------------------------------	---------------------	--	--	---	--	---	--