

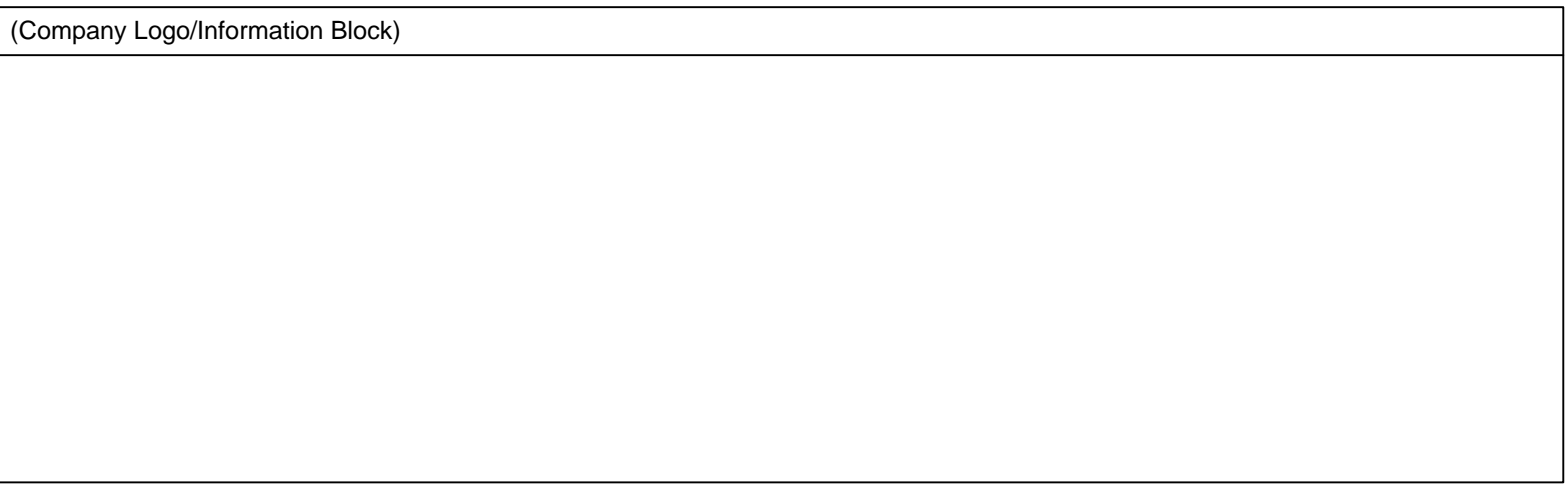
DEPARTMENT OF VETERANS AFFAIRS
SYRACUSE VA MEDICAL CENTER
800 IRVING AVE SYRACUSE, NY 13210

INSTALL EFFICIENT LIGHTING TECHNOLOGIES
PROJECT: 528A7-13-717



INDEX	
SHEET NUMBER	CONTENT
G-001	COVER SHEET
E-101	BASEMENT LIGHTING
E-102	BUILDING 1 PERIMETER AND SMOKING AREA LIGHTING
E-103	AUDITORIUM LIGHTING
E-104	SCI 5TH FLOOR LIGHTING
E-105	BUILDING 19 LIGHTING
E-106	BUILDING 1 STAIRWELL LIGHTING LOCATIONS
E-107	BASEMENT LIGHTING CONTROLS
E-108	GROUND FLOOR LIGHTING CONTROLS
E-109	FIRST FLOOR LIGHTING CONTROLS
E-601	LUMINAIRE SCHEDULE

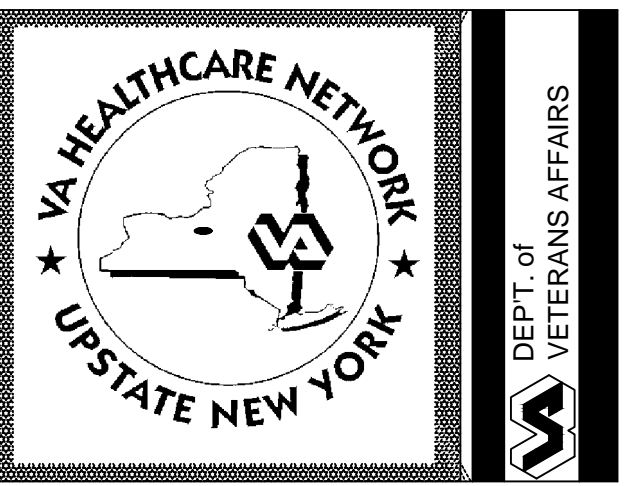
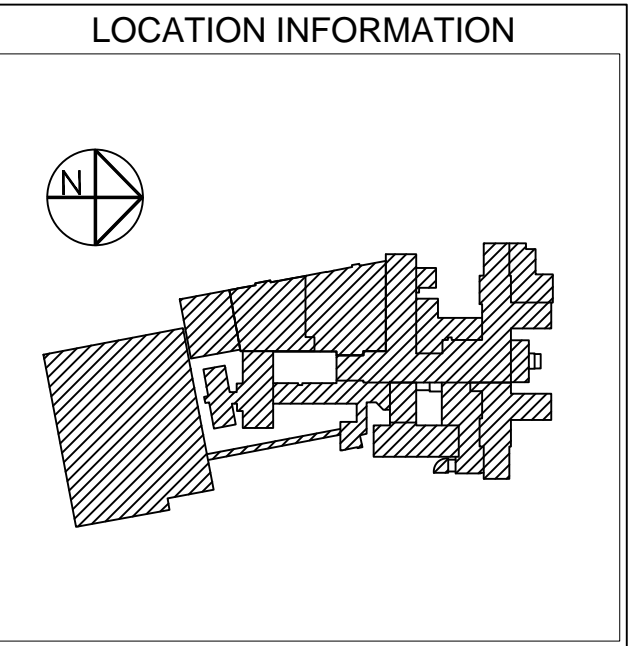
Revisions	Date



COVER SHEET
Approved: Facility Manager

Project Title INSTALL EFFICIENT LIGHTING TECHNOLOGIES		
Building Numbers		
Checked CHECKED	Drawn AWG	
Location VAMC SYRACUSE, NEW YORK		

Date 02/19/2013
Project No. 528A7-13-717
DRAWING NO. G-001
Dwg. 1 Of 11



1. REMOVE AND DISPOSE OF EXISTING 150W METAL HALIDE WALL MOUNT FIXTURE, INSTALL NEW TYPE "D" L.E.D. WALL MOUNT FIXTURE UTILIZING EXISTING WIRING.
2. REMOVE AND DISPOSE OF EXISTING 150W METAL HALIDE CEILING MOUNTED FIXTURE, INSTALL NEW TYPE "F" L.E.D. CEILING MOUNT FIXTURE UTILIZING EXISTING WIRING.
3. FIXTURES ARE LOCATED ON LOADING DOCK OVERHANG
4. REMOVE AND DISPOSE OF EXISTING SOFFIT MOUNTED ~70W HIGH PRESSURE SODIUM FIXTURES. INSTALL NEW TYPE "E" L.E.D. CEILING MOUNT FIXTURE UTILIZING EXISTING WIRING.
5. REMOVE AND DISPOSE OF ONE EXISTING HIGH PRESSURE SODIUM WALL MOUNT FIXTURE, REPLACE WITH ONE NEW TYPE "C" L.E.D. FIXTURE UTILIZING EXISTING WIRING.
6. REMOVE AND DISPOSE OF ONE EXISTING WALL MOUNT 100W METAL HALIDE FIXTURE, INSTALL ONE NEW TYPE "C" L.E.D. FIXTURE UTILIZING EXISTING WIRING.
7. REPLACE EXISTING WALL SWITCHES WITH TIMER BASED SWITCHES, SET TIMER FOR 1HR WITH SINGLE BLINK INDICATION AT 5 MINS REMAINING AND DOUBLE BLINK INDICATION AT 1 MIN TIME REMAINING

General Notes:
1) FIELD VERIFY ALL FIXTURE LOCATIONS AND HEIGHTS
2) ACCESS TO SECURE AREAS IS TO BE COORDINATED WITH THE COR

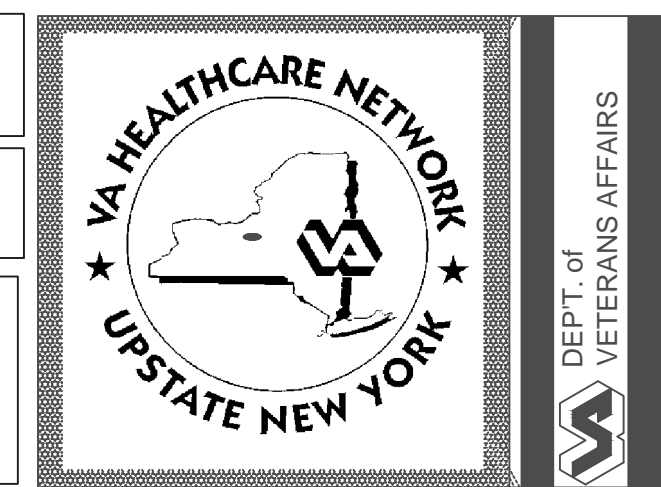
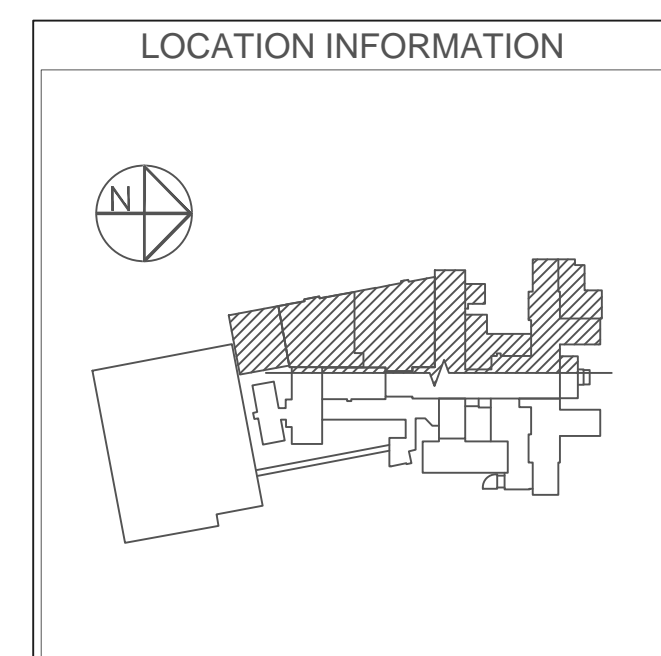
[illegible]

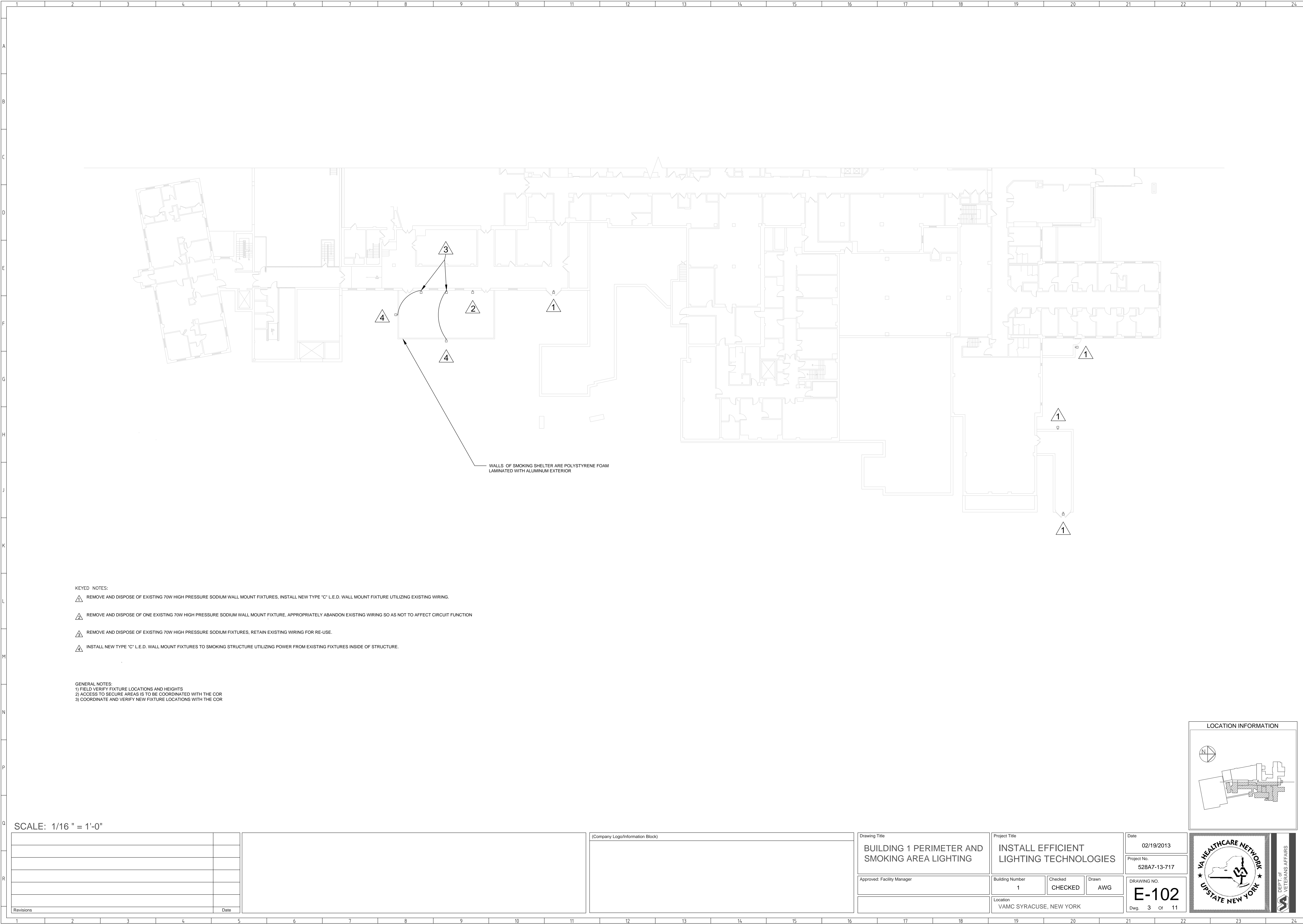
BASEMENT LIGHTING

Approved: Facility Manager

<h1>INSTALL EFFICIENT LIGHTING TECHNOLOGIES</h1>		
Building Number 1	Checked CHECKED	Drawn AWG
Location VAMC SYRACUSE, NEW YORK		

Date	02/19/2013
Project No.	528A7-13-71
DRAWING NO.	E-10
Dwg.	2 Of





KEYED NOTES:

- 1) REMOVE AND DISPOSE OF EXISTING 70W HIGH PRESSURE SODIUM WALL MOUNT FIXTURES, INSTALL NEW TYPE "C" L.E.D. WALL MOUNT FIXTURE UTILIZING EXISTING WIRING.
- 2) REMOVE AND DISPOSE OF ONE EXISTING 70W HIGH PRESSURE SODIUM WALL MOUNT FIXTURE, APPROPRIATELY ABANDON EXISTING WIRING SO AS NOT TO AFFECT CIRCUIT FUNCTION
- 3) REMOVE AND DISPOSE OF EXISTING 70W HIGH PRESSURE SODIUM FIXTURES, RETAIN EXISTING WIRING FOR RE-USE.
- 4) INSTALL NEW TYPE "C" L.E.D. WALL MOUNT FIXTURES TO SMOKING STRUCTURE UTILIZING POWER FROM EXISTING FIXTURES INSIDE OF STRUCTURE.

GENERAL NOTES:

- 1) FIELD VERIFY FIXTURE LOCATIONS AND HEIGHTS
- 2) ACCESS TO SECURE AREAS IS TO BE COORDINATED WITH THE COR
- 3) COORDINATE AND VERIFY NEW FIXTURE LOCATIONS WITH THE COR

SCALE: 1/16 " = 1'-0"

Revisions	Date

(Company Logo/Information Block)

Drawing Title

BUILDING 1 PERIMETER AND
SMOKING AREA LIGHTING

Approved: Facility Manager

Project Title

INSTALL EFFICIENT
LIGHTING TECHNOLOGIES

Building Number

1

Checked

CHECKED

Drawn

AWG

Date

02/19/2013

Project No.

528A7-13-717

DRAWING NO.

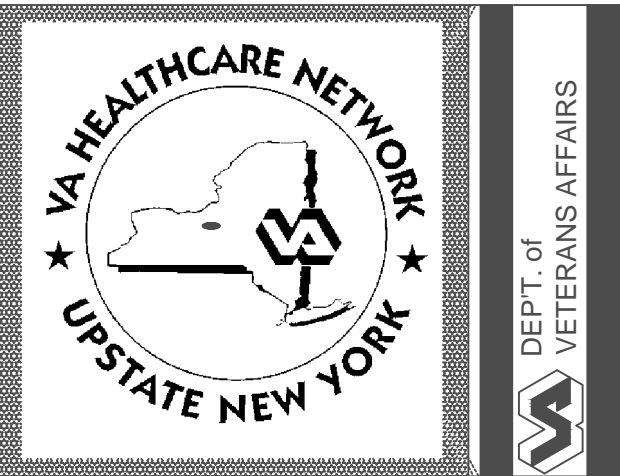
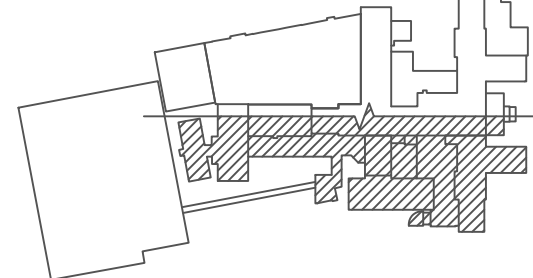
E-102

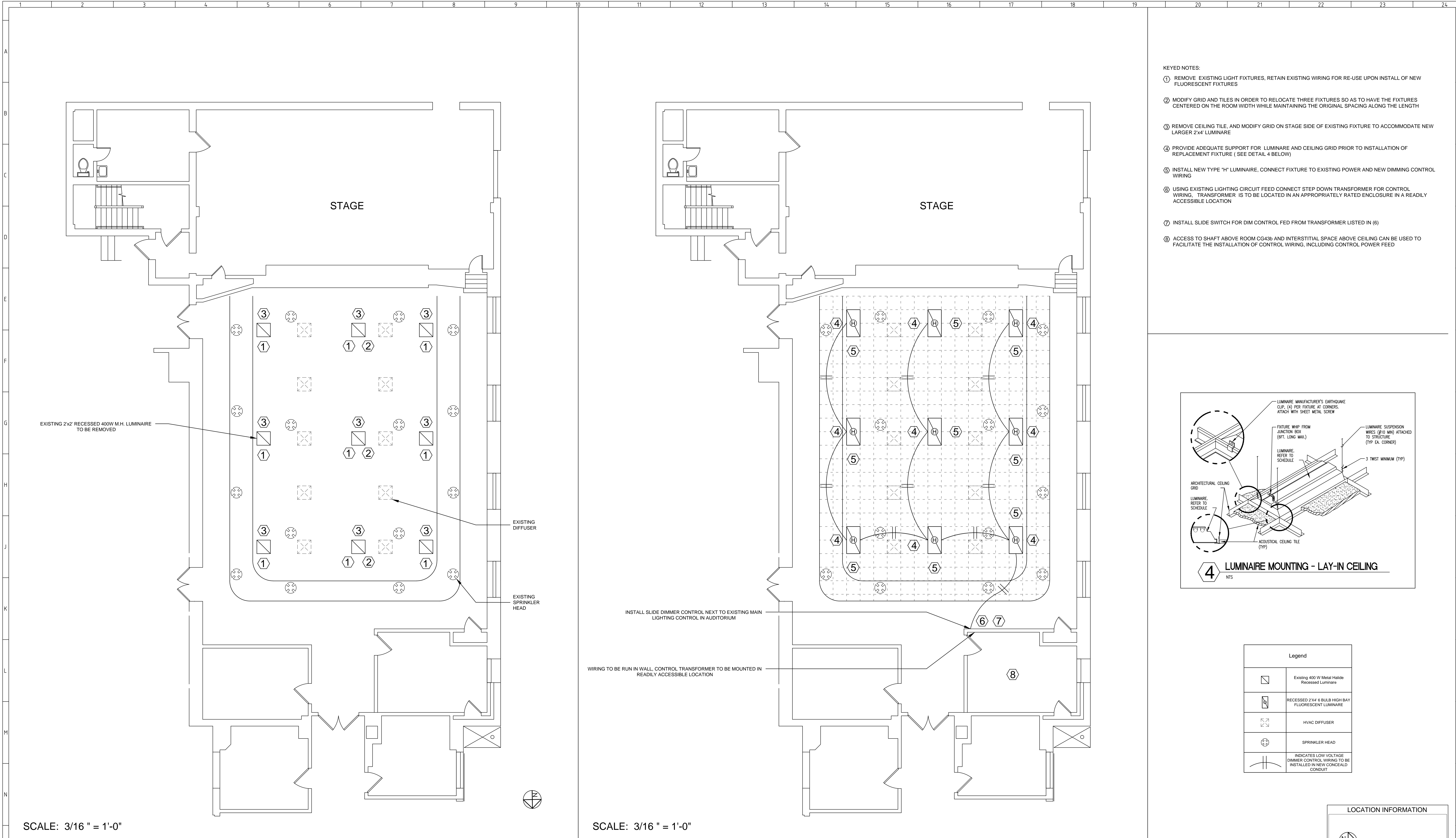
Dwg. 3 Of 11

Location

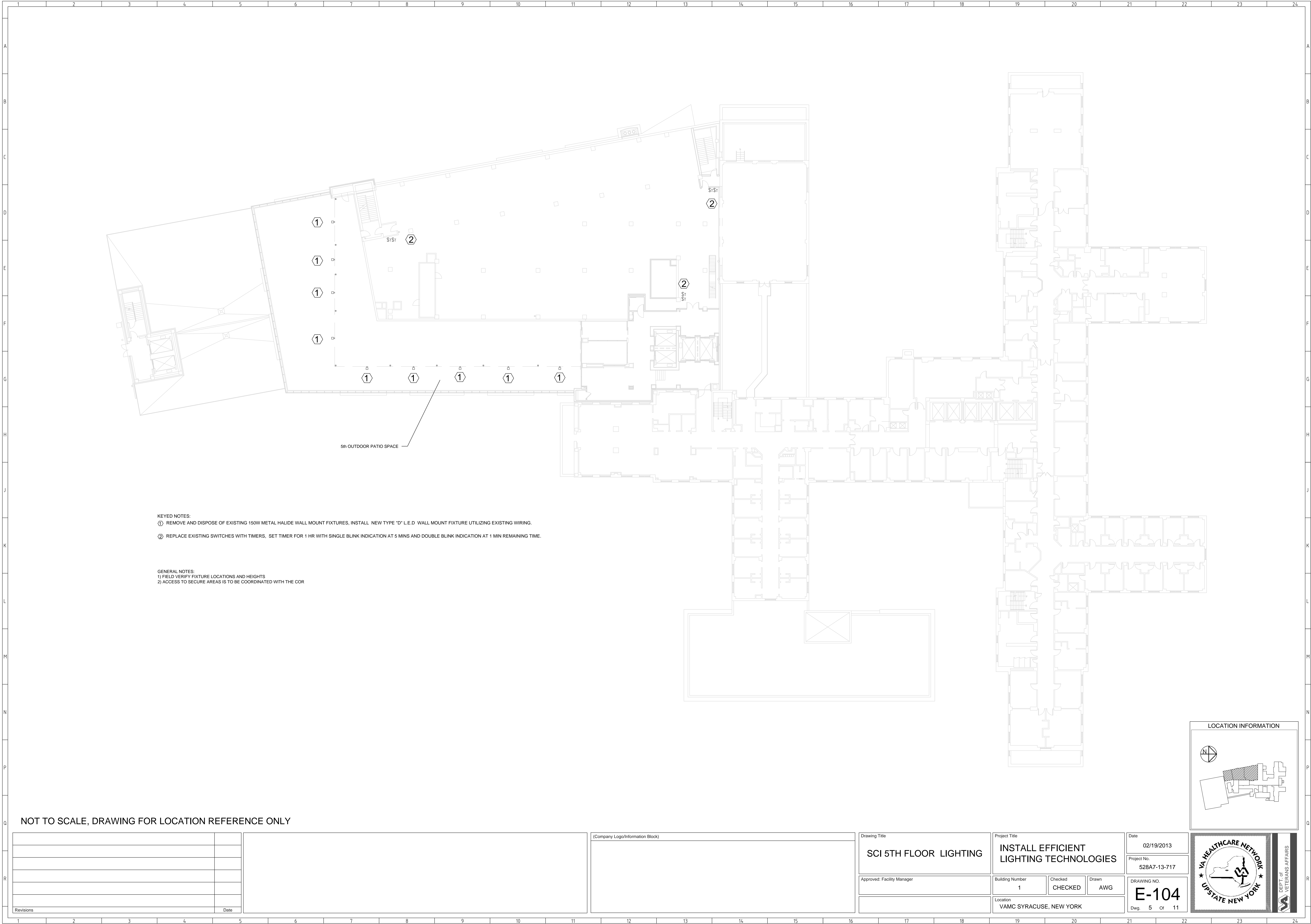
VAMC SYRACUSE, NEW YORK

LOCATION INFORMATION





SCALE: 3/16" = 1'-0"		SCALE: 3/16" = 1'-0"																					
DEMO PLAN		LIGHTING PLAN																					
GENERAL NOTES: 1) FIXTURES ARE TO BE AS SPECIFIED FOR THE AUDITORIUM, OR THE CONTRACTOR SHALL BE RESPONSIBLE FOR CONDUCTING A LIGHTING STUDY TO VERIFY ALTERNATE LUMINAIRE SUFFICIENTLY SATISFIES LIGHTING REQUIREMENTS AND SPECIFICATIONS 2) ACCESS TO BE COORDINATED WITH THE COR																							
<table><tr><td>Revisions</td><td>Date</td></tr><tr><td> </td><td> </td></tr><tr><td> </td><td> </td></tr><tr><td> </td><td> </td></tr><tr><td> </td><td> </td></tr></table>		Revisions	Date									<table><tr><td colspan="2">(Company Logo/Information Block)</td></tr><tr><td colspan="2"> </td></tr></table>		(Company Logo/Information Block)									
Revisions	Date																						
(Company Logo/Information Block)																							
<table><tr><td colspan="2">Drawing Title</td></tr><tr><td colspan="2">AUDITORIUM LIGHTING</td></tr><tr><td colspan="2">Approved: Facility Manager</td></tr><tr><td colspan="2"> </td></tr></table>		Drawing Title		AUDITORIUM LIGHTING		Approved: Facility Manager				<table><tr><td colspan="2">Project Title</td></tr><tr><td colspan="2">INSTALL EFFICIENT LIGHTING TECHNOLOGIES</td></tr><tr><td>Building Number</td><td>Checked</td></tr><tr><td>1</td><td>CHECKED</td></tr><tr><td>Location</td><td>Drawn</td></tr><tr><td>VAMC SYRACUSE, NEW YORK</td><td>AWG</td></tr></table>		Project Title		INSTALL EFFICIENT LIGHTING TECHNOLOGIES		Building Number	Checked	1	CHECKED	Location	Drawn	VAMC SYRACUSE, NEW YORK	AWG
Drawing Title																							
AUDITORIUM LIGHTING																							
Approved: Facility Manager																							
Project Title																							
INSTALL EFFICIENT LIGHTING TECHNOLOGIES																							
Building Number	Checked																						
1	CHECKED																						
Location	Drawn																						
VAMC SYRACUSE, NEW YORK	AWG																						
<table><tr><td>Date</td><td>02/19/2013</td></tr><tr><td>Project No.</td><td>528A7-13-717</td></tr><tr><td>DRAWING NO.</td><td>E-103</td></tr><tr><td>Dwg. 4</td><td>Of 11</td></tr></table>		Date	02/19/2013	Project No.	528A7-13-717	DRAWING NO.	E-103	Dwg. 4	Of 11	<table><tr><td colspan="2">LOCATION INFORMATION</td></tr><tr><td colspan="2"></td></tr></table>		LOCATION INFORMATION											
Date	02/19/2013																						
Project No.	528A7-13-717																						
DRAWING NO.	E-103																						
Dwg. 4	Of 11																						
LOCATION INFORMATION																							



KEYED NOTES:
① REMOVE AND DISPOSE OF EXISTING 150W METAL HALIDE WALL MOUNT FIXTURES, INSTALL NEW TYPE "D" L.E.D. WALL MOUNT FIXTURE UTILIZING EXISTING WIRING.
② REPLACE EXISTING SWITCHES WITH TIMERS. SET TIMER FOR 1 HR WITH SINGLE BLINK INDICATION AT 5 MINS AND DOUBLE BLINK INDICATION AT 1 MIN REMAINING TIME.

GENERAL NOTES:
1) FIELD VERIFY FIXTURE LOCATIONS AND HEIGHTS
2) ACCESS TO SECURE AREAS IS TO BE COORDINATED WITH THE COR

NOT TO SCALE, DRAWING FOR LOCATION REFERENCE ONLY

Revisions	Date

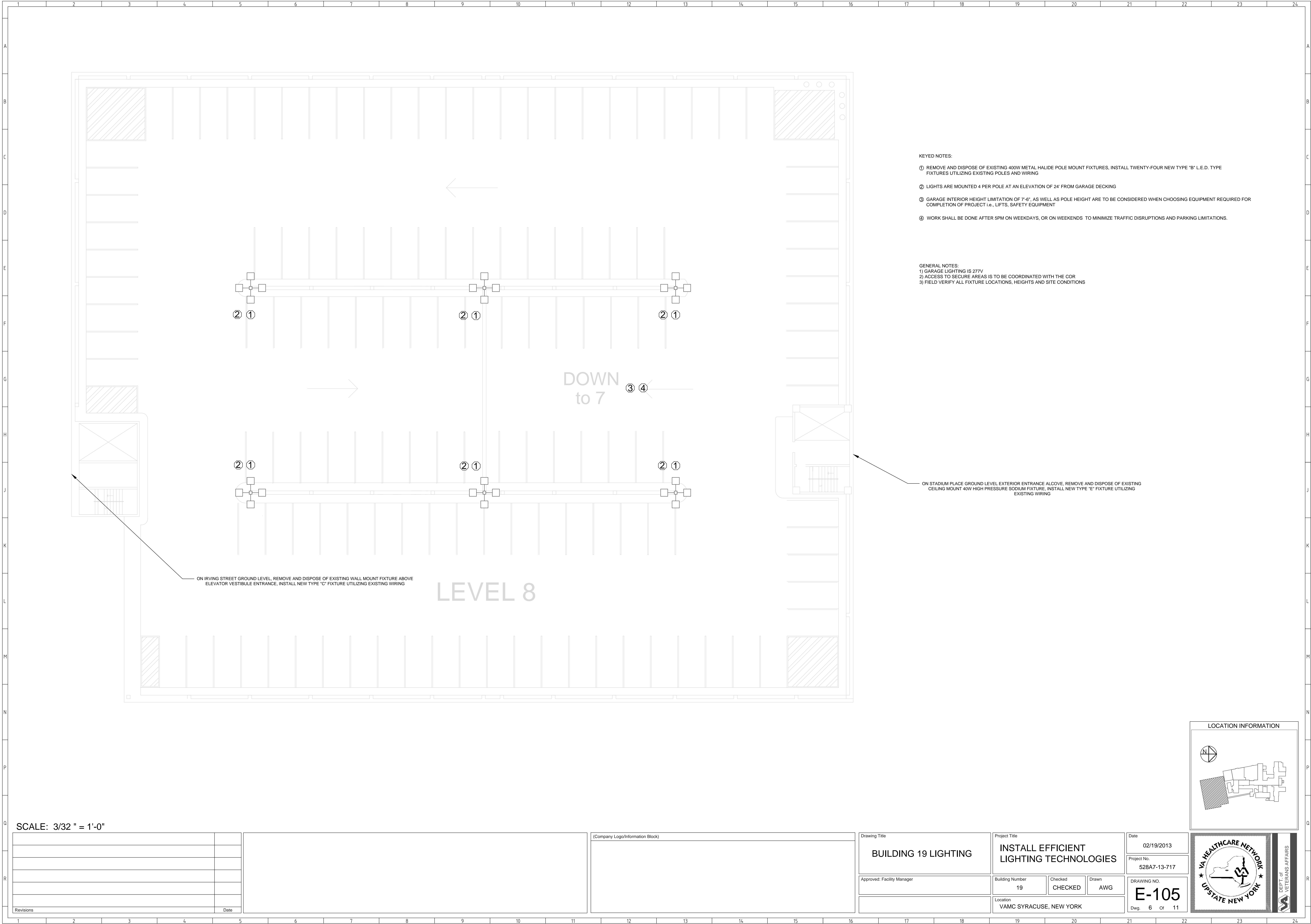
(Company Logo/Information Block)

Drawing Title
SCI 5TH FLOOR LIGHTING
Approved: Facility Manager

Project Title
INSTALL EFFICIENT LIGHTING TECHNOLOGIES
Building Number
1
Location
VAMC SYRACUSE, NEW YORK

Date
02/19/2013
Project No.
528A7-13-717
DRAWING NO.
E-104
Dwg. 5 Of 11

LOCATION INFORMATION



- KEYED NOTES:
- ① REMOVE AND DISPOSE OF EXISTING 400W METAL HALIDE POLE MOUNT FIXTURES, INSTALL TWENTY-FOUR NEW TYPE "B" L.E.D. TYPE FIXTURES UTILIZING EXISTING POLES AND WIRING
 - ② LIGHTS ARE MOUNTED 4 PER POLE AT AN ELEVATION OF 24' FROM GARAGE DECKING
 - ③ GARAGE INTERIOR HEIGHT LIMITATION OF 7'-6", AS WELL AS POLE HEIGHT ARE TO BE CONSIDERED WHEN CHOOSING EQUIPMENT REQUIRED FOR COMPLETION OF PROJECT i.e., LIFTS, SAFETY EQUIPMENT
 - ④ WORK SHALL BE DONE AFTER 5PM ON WEEKDAYS, OR ON WEEKENDS TO MINIMIZE TRAFFIC DISRUPTIONS AND PARKING LIMITATIONS.

- GENERAL NOTES:
- 1) GARAGE LIGHTING IS 277V
 - 2) ACCESS TO SECURE AREAS IS TO BE COORDINATED WITH THE COR
 - 3) FIELD VERIFY ALL FIXTURE LOCATIONS, HEIGHTS AND SITE CONDITIONS

SCALE: 3/32 " = 1'-0"

Revisions	Date

(Company Logo/Information Block)

Drawing Title

BUILDING 19 LIGHTING

Approved: Facility Manager

Project Title

INSTALL EFFICIENT LIGHTING TECHNOLOGIES

Building Number19

CheckedCHECKED

DrawnAWG

LocationVAMC SYRACUSE, NEW YORK

Date02/19/2013

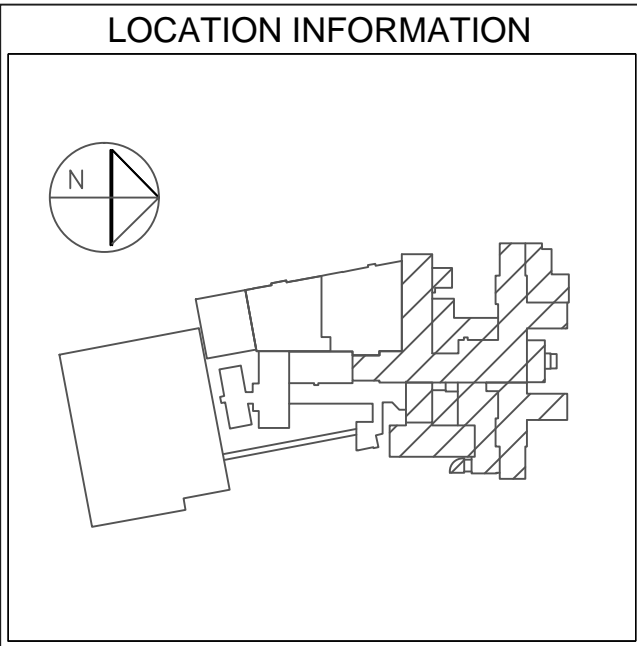
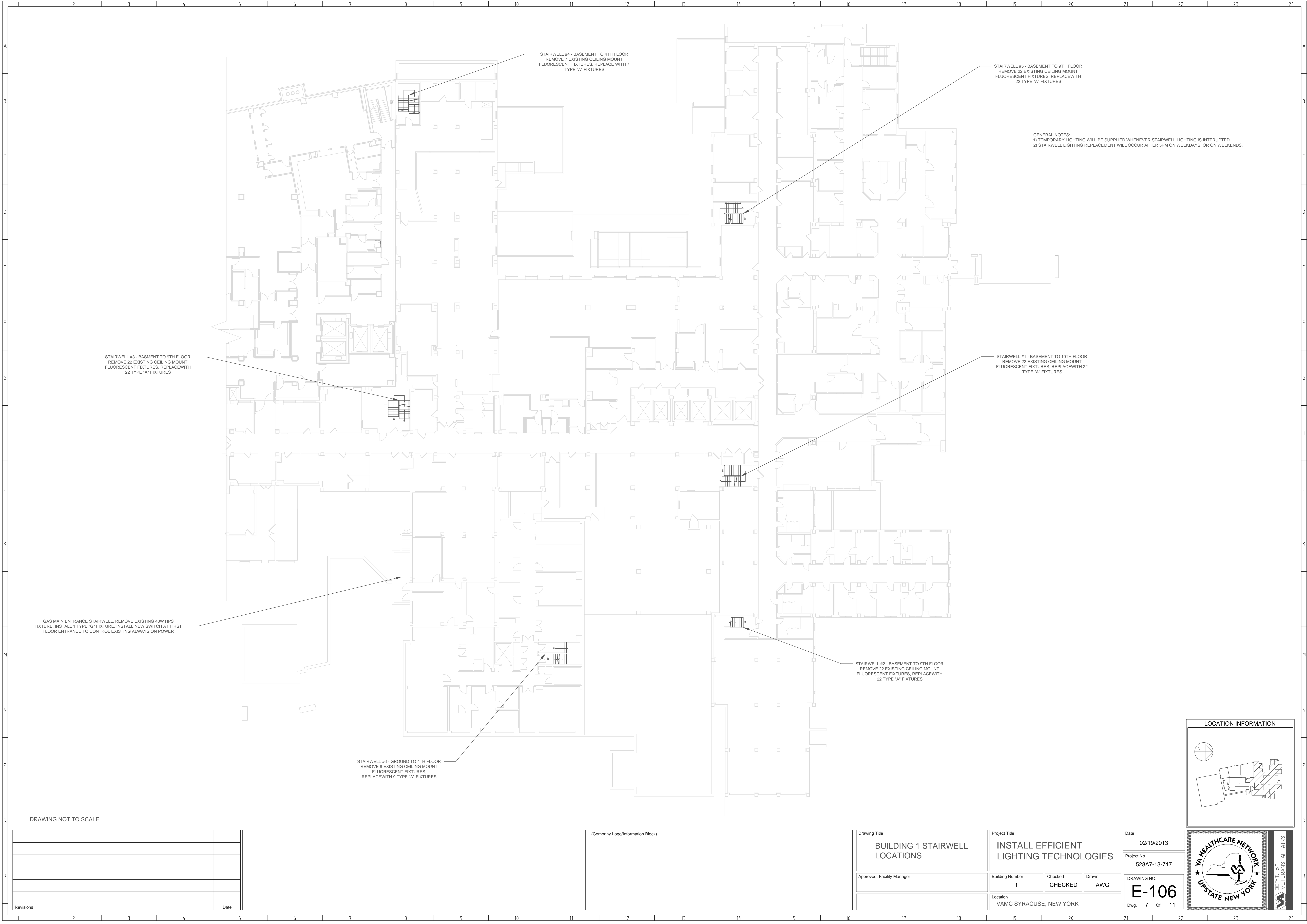
Project No.528A7-13-717

DRAWING NO.

E-105

Dwg. 6 Of 11

LOCATION INFORMATION



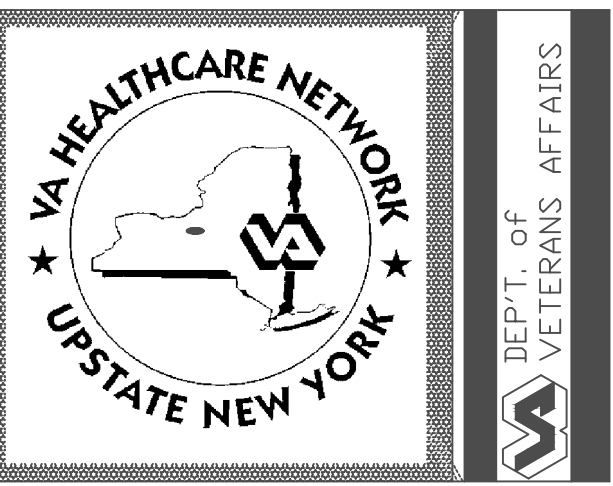
Revisions	Date

(Company Logo/Information Block)

Drawing Title
BUILDING 1 STAIRWELL LOCATIONS
Approved: Facility Manager

Project Title
INSTALL EFFICIENT LIGHTING TECHNOLOGIES
Building Number
1
Location
VAMC SYRACUSE, NEW YORK

Date
02/19/2013
Project No.
528A7-13-717
DRAWING NO.
E-106
Dwg. 7 Of 11





- ① PROVIDE AND INSTALL LIGHTING CONTROL PANEL WITH TIME CLOCK CONTROL, PROVIDE AND INSTALL MANUAL OVERRIDE OUTSIDE OF ELECTRICAL CLOSET, INTERCEPT LIGHTING CIRCUITS 2 AN 3 FROM PANEL LP1-G, ARRANGE CIRCUIT AND TIME CLOCK PROGRAMMING SUCH THAT THE LIGHTING CONTROL PANEL CONTROLS THE ON-TIME OF THE LIGHTING CIRCUIT
- ② (SEE NOTE '1' ON FIRST FLOOR LIGHTING CONTROLS DRAWING E-109)

<div>Revisions</div> <table><tr><td> </td><td> </td></tr><tr><td> </td><td> </td></tr><tr><td> </td><td> </td></tr><tr><td> </td><td> </td></tr><tr><td>Date</td><td> </td></tr></table>									Date		<div> </div>	<div>(Company Logo/Information Block)</div>	<div>Drawing Title</div> <div>GROUND FLOOR LIGHTING CONTROLS</div>	<div>Project Title</div> <div>INSTALL EFFICIENT LIGHTING TECHNOLOGIES</div>	<div>Date</div> <div>02/19/2013</div>
Date															
<div>Approved: Facility Manager</div>	<div>Building Number</div> <div>SCI</div>	<div>Checked</div> <div>CHECKED</div>	<div>Drawn</div> <div>AWG</div>	<div>Project No.</div> <div>528A7-13-717</div>											
<div>Location</div> <div>VAMC SYRACUSE, NEW YORK</div>	<div>DRAWING NO.</div> <div>E-108</div>														
	<div>Dwg.</div> <div>9</div>	<div>Of</div> <div>11</div>													

LOCATION INFORMATION

VA HEALTHCARE NETWORK

UPSTATE NEW YORK

DEPT. of VETERANS AFFAIRS



- ① PROVIDE POWER TO VA FURNISHED AND INSTALLED WATTSTOPPER LIGHTING CONTROL PANEL. INTERCEPT LIGHTING CIRCUITS 2,3,4 AND 6 FROM PANEL LP2-1 AND CIRCUIT 3 FROM PANEL LP2-G ON THE GROUND LEVEL. ARRANGE CIRCUITS SUCH THAT WATTSTOPPER PANEL CONTROLS ON-TIME OF LIGHTING CIRCUITS. CONNECT PANEL TO EXISTING WATTSTOPPER ON GROUND LEVEL (SEE NOTE 3). PROVIDE PROGRAMMING TO INTERFACE NEW PANEL WITH EXISTING SYSTEM.
- ② UTILIZE ELECTRICAL CLOSET TO FACILITATE RUNNING OF LIGHTING CONTROL NETWORK WIRING TO EXSISTING WATTSTOPPER PANEL LOCATED IN ELECTRICAL CLOSET ON FLOOR IMMEDIATELY BELOW.
- ③ PROVIDE AND INSTALL LIGHTING CONTROL PANEL WITH TIME CLOCK CONTROL. PROVIDE AND INSTALL MANUAL OVERRIDE OUTSIDE OF ELECTRICAL CLOSET. INTERCEPT LIGHTING CIRCUIT 3 FROM PANEL LP1-1. ARRANGE CIRCUIT AND TIME CLOCK PROGRAMMING SUCH THAT THE LIGHTING CONTROL PANEL CONTROLS THE ON-TIME OF THE LIGHTING CIRCUIT

Revisions	Date

(Company Logo/Information Block)

Drawing Title FIRST FLOOR LIGHTING CONTROLS		Project Title INSTALL EFFICIENT LIGHTING TECHNOLOGIES		Date 02/19/2013	
Approved: Facility Manager		Building Number SCI	Checked CHECKED	Drawn AWG	Project No. 528A7-13-717
Location VAMC SYRACUSE, NEW YORK		DRAWING NO. E-109		Dwg. 10 Of 11	

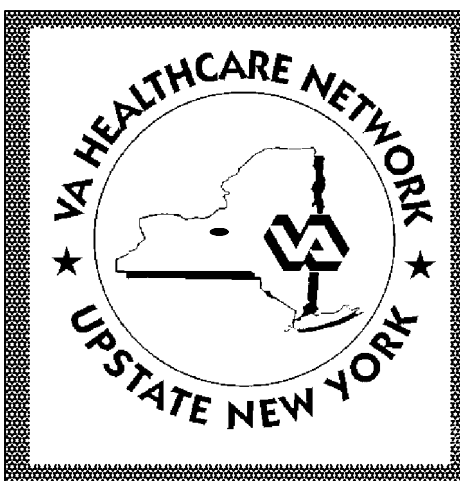

LOCATION INFORMATION

1	2	3	4	5	6	7	8	9	10	11	12	13	14	15	16	17	18	19	20	21	22	23	24	
A																								A
B																								B
C																								C
D																								D
E																								E
F																								F
G																								G
H																								H
J																								J
K																								K
L																								L
M																								M
N																								N
P																								P
Q																								Q
R																								R
D																								D
E																								E
F																								F
G																								G
H																								H
J																								J
K																								K
L																								L
M																								M
N																								N
P																								P
Q																								Q
R																								R

Revisions	Date

(Company Logo/Information Block)	

Drawing Title		Project Title		Date	
LUMINAIRE SCHEDULE		INSTALL EFFICIENT LIGHTING TECHNOLOGIES		02/19/2013	
Approved: Facility Manager		Building Number		Checked	Drawn
				CHECKED	AWG
		Location		DRAWING NO.	
		VAMC SYRACUSE, NEW YORK		E-601	
				Dwg.	11 Of 11

			
---	--	---	--