

Addendum No. 1
February 20, 2013

Incorporate the following revisions to the Bid Set Documents for Renovate Ward 5 East dated 12-21-12:

Drawing E001 - Electrical Legend, Notes and Abbreviations

- a. Revise Exit Light Model to be similar to Gilbert AC Only

Drawing E101 - Lighting Plans and Lighting Fixture Schedule

- a. Revise drawing to show updated lighting layout in corridors 5E540, 5E541, 5E542, and 5E543, Nurses Stations 1, 2, 3 and 4 as indicated by Revision #1, dated 2-20-13.
- b. Revise drawing to show updated lighting fixture schedule as indicated by Revision #1, dated 2-20-13.

Drawing E103 - General Notes

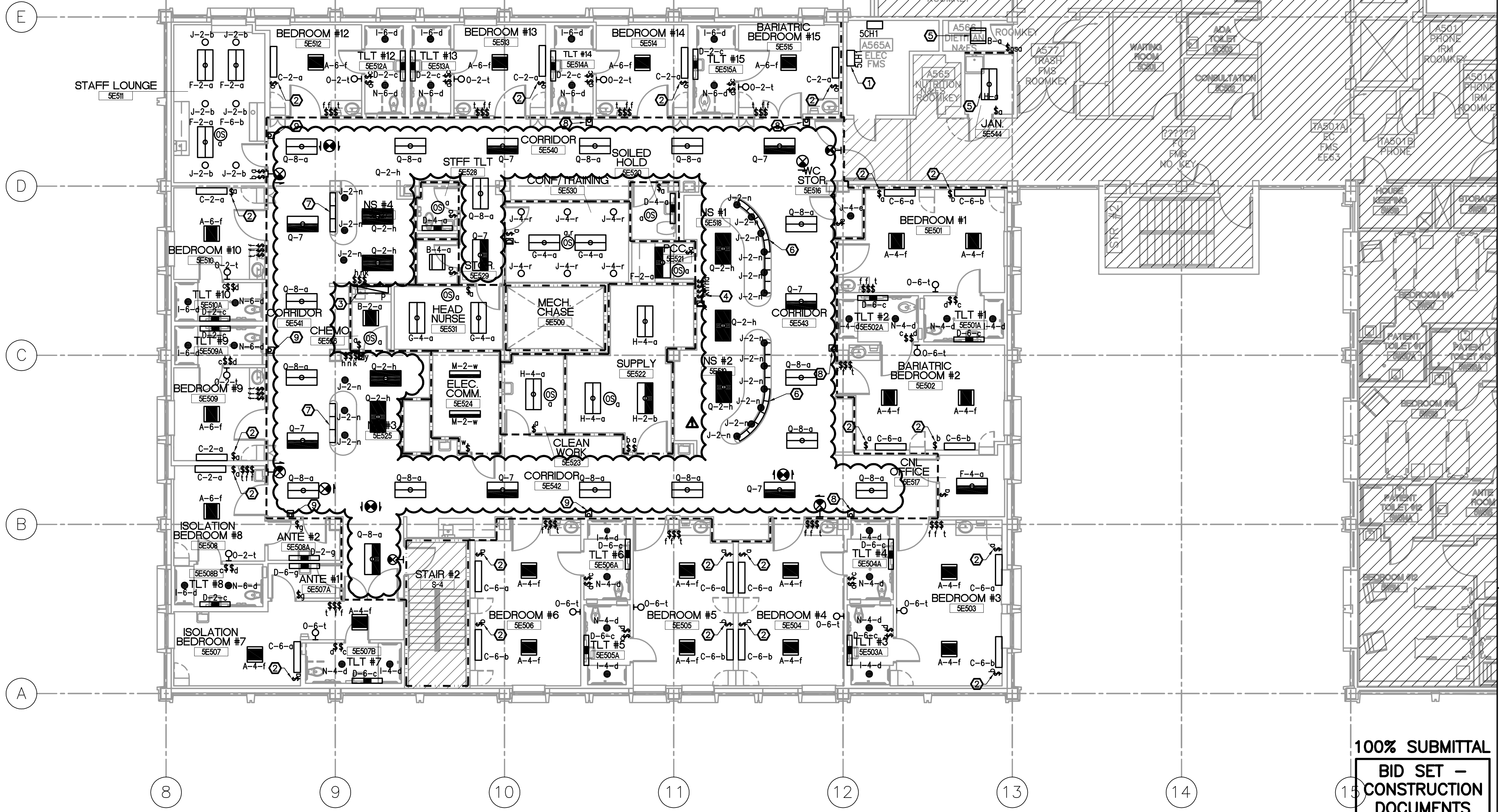
- a. Refer to revised General Notes regarding coordination with Nurse Call System for Ward 5 East and the ongoing Comprehensive Nurse Call System Upgrade Project for Building 47.

Lighting Calculations, Appendix E of the Design Documents Package

- a. Revise all lighting calculations.
- b. Revise life safety lighting calculations for corridors 5E540, 5E541, 5E542, and 5E543.

ONE EIGHTH INCH = ONE FOOT
ONE QUARTER INCH = ONE FOOT
ONE HALF INCH = ONE FOOT
ONE INCH = ONE FOOT
ONE AND ONE HALF INCHES = ONE FOOT
THREE QUARTERS INCH = ONE FOOT
THREE INCHES = ONE FOOT

LIGHT FIXTURE SCHEDULE							
TYPE	LAMP TYPE	NO. OF LAMPS	MOUNTING	LAMP WATTAGE	VOLTAGE	FIXTURE SIZE & DESCRIPTION	REMARKS
A	2', LED	—	CEILING, GRID MOUNTED	37W	277VAC	LITHONIA # 2VTL2	DIRECT/INDIRECT, VOLUMETRIC LIGHTING FIXTURE. PROVIDE BI-LEVEL BALLAST FOR DUAL SWITCHING.
B	2', LED	—	CEILING, GRID MOUNTED	37W	277VAC	LITHONIA # 2VTL2	DIRECT/INDIRECT/ VOLUMETRIC LIGHTING FIXTURE
C	4', LED	—	WALL, SURFACE MOUNTED @ 6" AFF	82W	277VAC	ALKCO # HZN4L351	4' PATIENT BED READING LIGHTING FIXTURE WITH LEDS UP AND DOWN
D	2', LED	—	WALL, SURFACE MOUNTED @ 3" ABOVE MIRROR	20W	277VAC	LITHONIA # WL2	2' LIGHTING FIXTURE
E	NOT USED						
F	4', LED	—	CEILING, GRID MOUNTED	47W	277VAC	LITHONIA # 2VTL2	2'X4' DIRECT/INDIRECT, VOLUMETRIC LIGHTING FIXTURE
G	4', LED	—	CEILING, GRID MOUNTED	75W	277VAC	LITHONIA # 2VTL2	2'X4' DIRECT/INDIRECT, VOLUMETRIC LIGHTING FIXTURE
H	4', LED	—	CEILING, GRID MOUNTED	50W	277VAC	LITHONIA # 2TL4	2'X4' LIGHTING FIXTURE
I	LED TYPE	—	CEILING, GRID MOUNTED	28W	277VAC	LITHONIA # L7XLED24	DOWN LIGHT, PROVIDED WITH MATTE WHITE REFLECTOR. WET LOCATION LISTED.
J	LED TYPE	—	CEILING, GRID MOUNTED	19W	277VAC	LITHONIA # REAL6CD6	DOWN LIGHT, PROVIDED WITH WHITE REFLECTOR. DIMMABLE.
K	LED TYPE	—	WALL, SURFACE MOUNTED	15W	120VAC	G LIGHTING #GL-4410	WALL SCONCE. PROVIDE SAME FINISH AS EXISTING WEST WARD AREA SCONCES. MOUNTED @ 7'6" TO CENTER.
L	LED	1	SURFACE ON DESK. (SEE ARCH. DWG FOR DETAIL)	26W	120VAC	AMERICAN LIGHTING #LR-LED-CW	CONTINUOUS ROPE LIGHTING CUT TO FIT SPACE.
M	4FT, FLUORESCENT, T8	2	SURFACE, PENDANT MOUNTED @8" AFF	28W	277VAC	LITHONIA # L232MV	
N	LED TYPE	—	CEILING, GRID MOUNTED	19W	277VAC	LITHONIA # REAL6CD6	DOWN LIGHT, PROVIDED WITH WHITE REFLECTOR.
O	LOW VOLTAGE, WHITE LED	1	WALL, SEMI-FLUSHED MOUNTED	3W	277VAC	ALKCO # WG2V	WHITE FINISHED HOUSING MOUNTED @ 18" AFF.
P	4FT, LED	1	SURFACE MOUNTED, UNDERCABINET	25W	120VAC	COLOR KINETICS #523-00027-50	UNDER CABINET MOUNTED
Q	4FT, LED	1	CEILING, GRID MOUNTED	50W	277VAC	CREE CR24-50L-35K-S	2x4 FIXTURE



PARTIAL 5TH FLOOR LIGHTING PLAN
SCALE: 1/8" = 1'-0"

- GENERAL NOTES :**
- CONNECT NORMAL POWER LIGHTING CIRCUITS TO PANEL 5NB-E1 UNLESS OTHERWISE NOTED. SEE PANEL SCHEDULE ON DRAWING E601.
 - CONNECT CRITICAL BRANCH LIGHTING CIRCUITS TO PANEL 5CH1-E1 UNLESS OTHERWISE NOTED. SEE PANEL SCHEDULE ON DRAWING E601.
 - CONTRACTOR SHALL COORDINATE CEILING TYPES WITH ARCHITECTURAL REFLECTED CEILING PLAN. PROVIDE FRAME-IN KIT SUITABLE FOR LIGHTING FIXTURES INSTALLED IN GYPSUM CEILINGS.

- DRAWING NOTES :**
- USE THIS PANELBOARD AS POINT OF CONNECTION FOR NEW LIGHTING CIRCUITS WHICH WILL BE CONNECTED TO THE LIFE SAFETY SYSTEM. SEE PANELBOARD SCHEDULE ON DRAWING E601.
 - LIGHT SWITCH TO BE PROVIDED IN PATIENT HEADWALL SYSTEM.
 - CONNECT TO NEAREST NORMAL POWER 120V RECEPTACLE CIRCUIT.
 - LIGHT SWITCH SHALL CONTROL CORRIDOR LIGHTING FIXTURES WITH SWITCH DESIGNATOR "a".
 - CONNECT TO NEAREST EXISTING 277V NORMAL POWER LIGHTING CIRCUIT IN AREA.
 - LIGHTING FIXTURE "L". CONNECT TO PANEL 5N1-2, CIRCUIT 37. FIXTURE SHALL BE CONTROLLED BY SWITCH WITH "k" DESIGNATOR LOCATED IN NURSE STATION #1 AND #2.
 - LIGHTING FIXTURE "L". CONNECT TO PANEL 5N1-2, CIRCUIT 39. FIXTURE SHALL BE CONTROLLED BY SWITCH WITH "k" DESIGNATOR LOCATED IN NURSE STATION #3 AND #4.
 - LIGHTING FIXTURE "K". CONNECT TO PANEL 5N1-2, CIRCUIT 40. FIXTURE SHALL BE CONTROLLED BY SWITCH WITH "x" DESIGNATOR LOCATED IN NURSE STATION #1.
 - LIGHTING FIXTURE "K". CONNECT TO PANEL 5N1-2, CIRCUIT 42. FIXTURE SHALL BE CONTROLLED BY SWITCH WITH "y" DESIGNATOR LOCATED IN NURSE STATION #3.

LEGEND

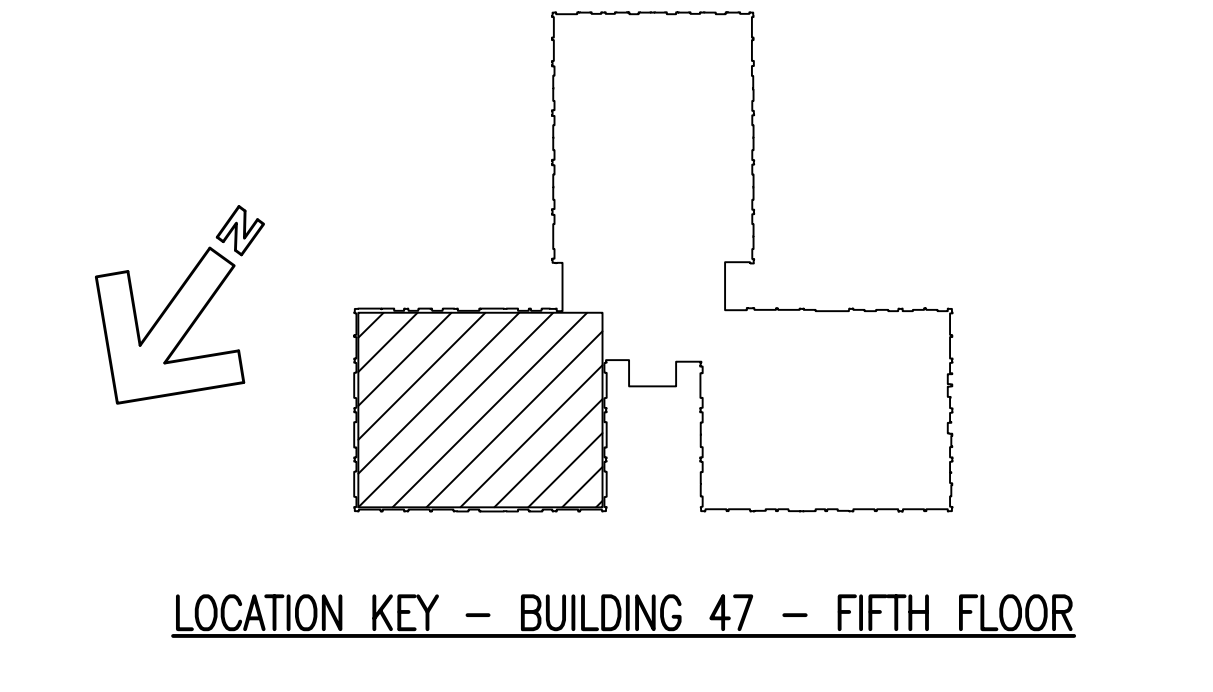
--- DENOTES EXISTING AREA NOT IN CONTRACT.

LIGHTING FIXTURE CIRCUIT LEGEND

A-1-a
SWITCH DESIGNATION
CIRCUIT #
FIXTURE TYPE

WALL LEGEND

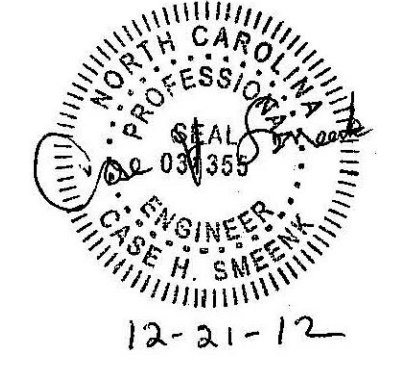
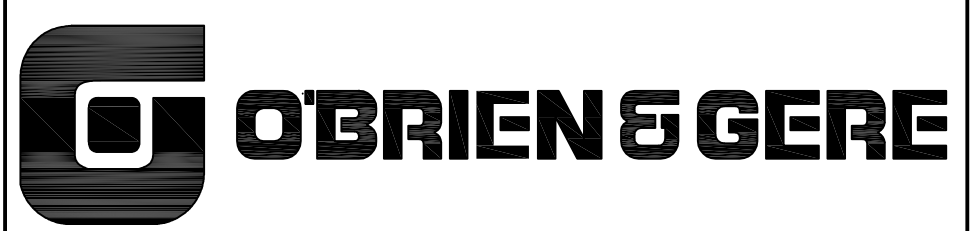
--- SMOKE RESISTIVE, POSITIVE LATCHING
--- SMOKE PARTITION (HAZARDOUS), 1/2 HR. LBL, CLOSER
--- SMOKE BARRIER (1 HOUR FIRE RESISTANCE RATED), 1/2 HR. LBL, HOLD OPENS
--- 1-HOUR FIRE RESISTANCE RATED BARRIER (HAZ.), 1/2 HR. LBL, CLOSER
--- EXISTING TO REMAIN 2-HOUR FIRE RATED



BID SET - 100% CONSTRUCTION DOCUMENTS

FULLY SPRINKLERED

DATE	2/20/13
BY	REVISIONS



*CONFIDENTIAL: THESE DRAWINGS MUST BE RETURNED TO FACILITIES MANAGEMENT SERVICE, PROJECT SECTION, UPON COMPLETION, OR FINAL USE BY THE CONTRACTOR FOR BIDDING PURPOSES.

ASBESTOS WARNING: ASBESTOS CONTAINING BUILDING MATERIALS (ACBM) ARE PRESENT THROUGHOUT THE FACILITY. IF CONTRACTORS FIND ACBM, OR SUSPECT FINDING ACBM, THEY SHALL IMMEDIATELY STOP WORK AND CONTACT THE PROJECT COTR.

SCALING NOTES: FULL SIZE V.A. "E" SHEETS (SCALE AS INDICATED) AND HALF SIZE V.A. "D" SHEETS (1/4 THE SCALE INDICATED LETTER SIZE DRAWINGS ARE NOT TO SCALE)

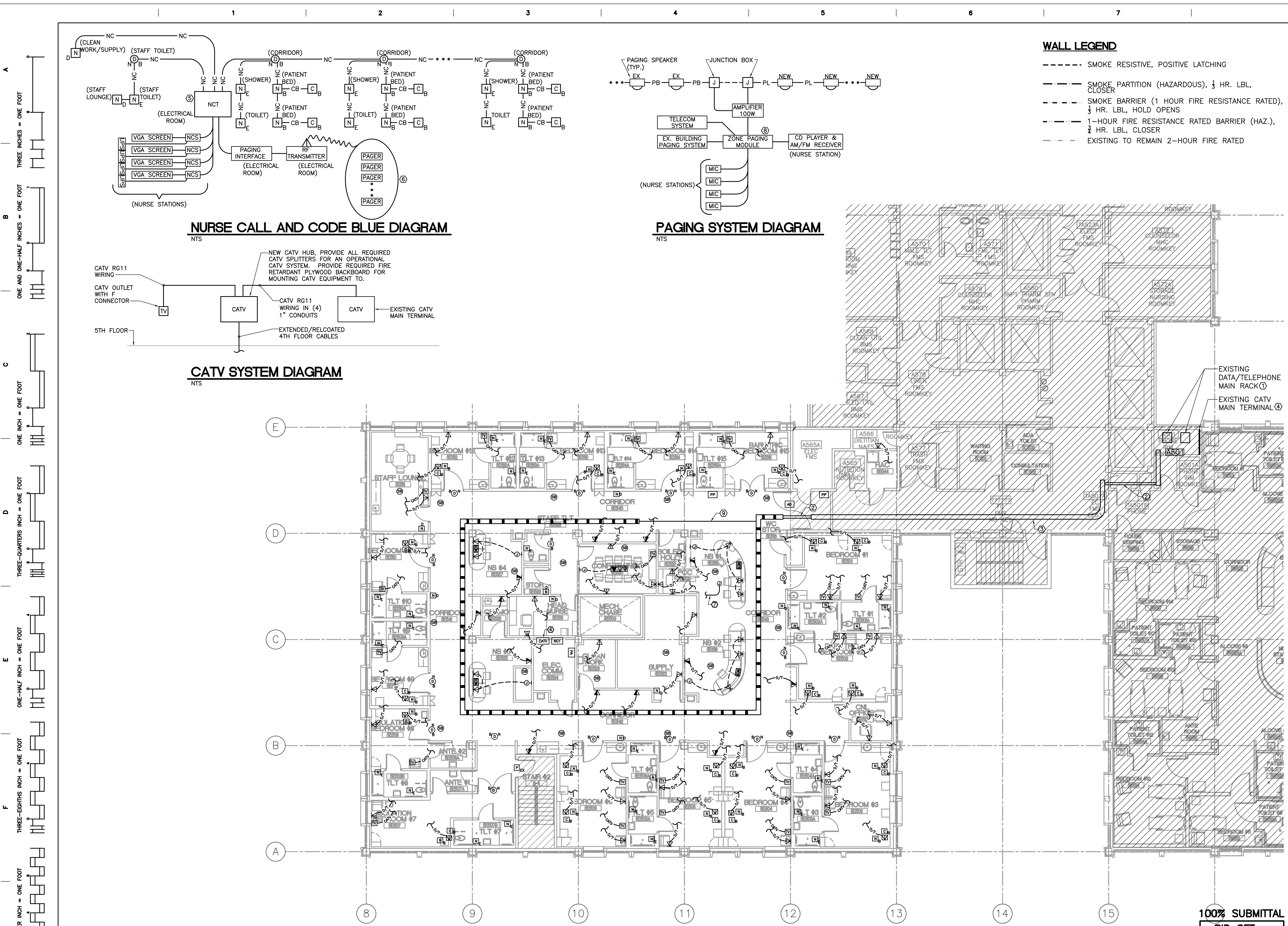
GENERAL NOTE: CONTRACTORS AND ARCHITECT/ENGINEERING FIRMS ARE RESPONSIBLE FOR THE FIELD VERIFICATION OF ALL EXISTING CONDITIONS.

Project Title
**RENOVATE
WARD 5 EAST**

Drawing Title FIFTH FLOOR - WARD EAST LIGHTING PLANS AND LIGHTING FIXTURE SCHEDULE		
Building Number 47	Checked JAA	Drawn MSMS
Location ASHEVILLE, NC		

Date 12/21/12
Project No. 637-11-119
DRAWING NO. E101
Dwg 68 of 78

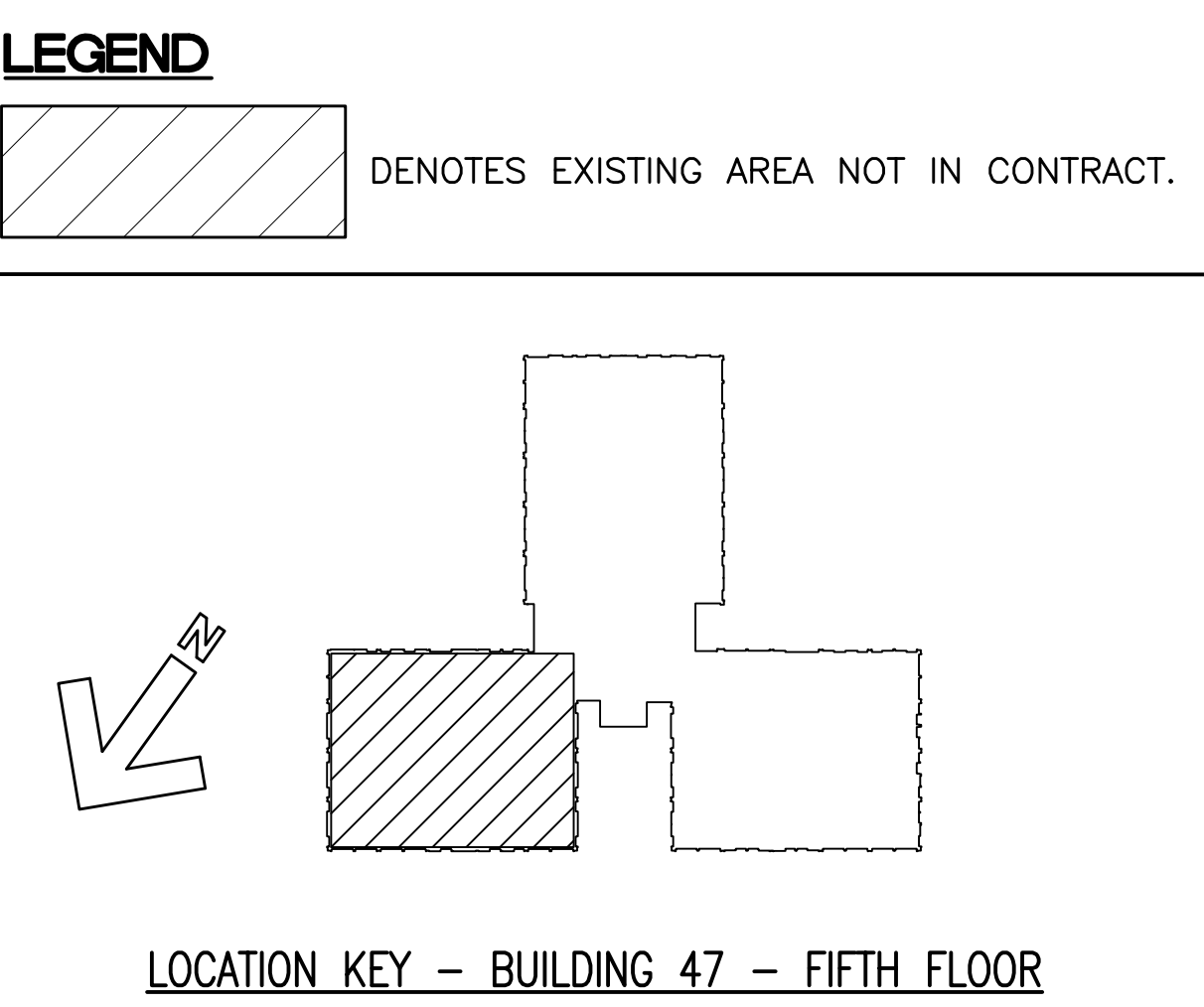




- WALL LEGEND**
- SMOKE RESISTIVE, POSITIVE LATCHING
 - SMOKE PARTITION (HAZARDOUS), 1/2 HR. LBL, CLOSER
 - SMOKE BARRIER (1 HOUR FIRE RESISTANCE RATED), 1/2 HR. LBL, HOLD OPENS
 - 1-HOUR FIRE RESISTANCE RATED BARRIER (HAZ.), 1/2 HR. LBL, CLOSER
 - EXISTING TO REMAIN 2-HOUR FIRE RATED

- GENERAL NOTES:**
- THE EXISTING NURSE CALL SYSTEM SHALL BE DEMOLISHED. THE EXISTING SYSTEM IN THIS SCOPE OF WORK AREA AT THE TIME OF THIS WORK SCOPE IS ANTICIPATED TO HAVE BEEN RECENTLY REPLACED WITH A NEW SYSTEM AS PART OF THE BUILDING'S COMPREHENSIVE NURSE CALL SYSTEM UPGRADE. ALTHOUGH NEW NURSE CALL SYSTEM DEVICES HAVE BEEN RECENTLY PROVIDED, ALL COMPONENTS SHALL BE REMOVED AND RETURNED TO THE VA. RE-USE OF REMOVED SYSTEM COMPONENTS IS PROHIBITED. ONLY NEW DEVICES, APPLIANCES AND COMPONENTS SHALL BE PROVIDED. REFER TO PLAN DRAWINGS FOR EQUIPMENT LOCATIONS.
 - THE NURSE CALL AND CODE BLUE DIAGRAM AND THE PAGING SYSTEM DIAGRAMS SHALL BE USED FOR BID PURPOSE ONLY. CONTRACTOR SHALL OBTAIN ACTUAL WIRING DIAGRAM FROM FINAL SELECTED VENDORS. SUBMIT SHOP DRAWINGS TO VA REPRESENTATIVE FOR APPROVAL.
 - THE CONTRACTOR IS RESPONSIBLE FOR ALL DATA/TEL CONDUIT, WIRING, TERMINATIONS, ANY REQUIRED PATCH PANELS, ETC. NECESSARY FOR ALL SPECIAL SYSTEMS UNLESS OTHERWISE NOTED. INSTALL ALL CONDUITS ALL THE WAY UP TO CABLE TRAY.
 - THE NURSE CALL SYSTEM SHALL HAVE TV CONTROL CAPABILITIES. THE CONTRACTOR SHALL PROVIDE ALL NECESSARY DEVICES, BACKBOXES, CONDUIT, WIRING, ETC TO PROVIDE A FULLY FUNCTIONING SYSTEM.

- DRAWING NOTES:**
- USE EXISTING TELECOMMUNICATION RACK LOCATED IN THIS ROOM AS POINT OF CONNECTION FOR NEW DATA/TELEPHONE DROPS. COORDINATE EXACT RACK LOCATION IN THE FIELD.
 - CONTRACTOR SHALL REUSE EXISTING 4" CONDUIT TO INSTALL NEW TELECOMMUNICATION CABLES. COORDINATE EXACT LOCATION OF CONDUITS IN THE FIELD.
 - CONTRACTOR SHALL REUSE EXISTING CABLE TRAY TO INSTALL NEW TELECOMMUNICATION CABLES. COORDINATE EXACT LOCATION OF CABLE TRAY IN THE FIELD.
 - CONNECTION POINT FOR CATV CABLES IN THE 5 EAST WING AND 4 EAST WING. PROVIDE 4(FOUR), 1" CONDUITS WITH FISHWIRE BACK TO CATV MAIN TERMINAL IN ROOM A501.
 - USE 1#18 AWG TWISTED SHIELDED PAIR AND MULTI CONDUCTOR CABLE FOR WIRING DEVICES. MINIMUM SIZE CONDUIT SHALL BE 1". FOLLOW MANUFACTURER RECOMMENDATION FOR WIRING AND INSTALLATION.
 - PROVIDE PAGER QUANTITY AS PER VA REQUIREMENTS.
 - PROVIDE ONE(1), 1" CONDUIT FROM MASTER NURSE STATION DOWN TO 2ND FLOOR MAIN COMMUNICATIONS ROOM (APPROXIMATELY 200') FOR TELEMETRY SYSTEM. ACTUAL TELEMETRY SYSTEM WILL BE PROVIDED AND INSTALLED BY BY VA. CONTRACTOR SHALL BE RESPONSIBLE FOR INSTALLING CONDUIT BOXES AND FISHWIRE. COORDINATE EXACT LOCATION OF DEVICES WITH THE VA. SEE DRAWING AD-101 FOR MORE INFORMATION.
 - PROVIDE A ZONE PAGING MODULE WITH CONTACTS AND CONNECT TO THE EXISTING BUILDING PAGING SYSTEM. THE PAGING MODULE SHALL BE CAPABLE OF PROVIDING EMERGENCY CALL OPERATIONS. THE CONTRACTOR SHALL COORDINATE WITH THE VA FOR CORRECT SEQUENCE OF OPERATION AND PROGRAMMING FOR THE EMERGENCY CALL OPERATION OVERRIDES. ALL EQUIPMENT, CONDUIT, WIRING, ETC. SHALL BE PROVIDED BY THE ELECTRICAL CONTRACTOR FOR A COMPLETE AND FUNCTIONAL PAGING SYSTEM.
 - PROVIDE ONE (1) 4" CONDUIT FOR TELECOM CABLING. COORDINATE ROUTING WITH EXISTING DUCTWORK IN AREA AND WITH NEW MECHANICAL, PLUMBING, STRUCTURAL AND ARCHITECTURAL DRAWINGS PRIOR TO INSTALLATION.



PARTIAL 5TH FL SPECIAL SYSTEMS PLAN
SCALE: 1/8" = 1'-0"

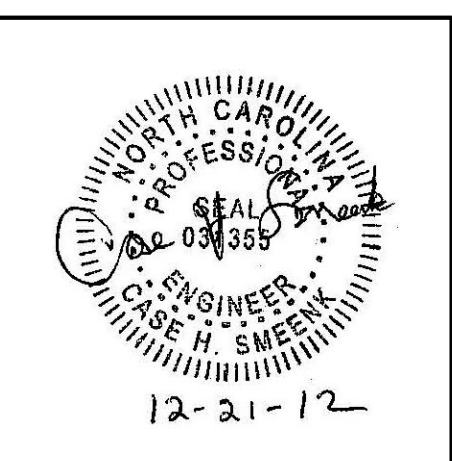
1/8"=1'-0" 8 4 0 8 16

100% SUBMITTAL
BID SET - CONSTRUCTION DOCUMENTS
DATE: DECEMBER, 21 2012

BID SET - 100% CONSTRUCTION DOCUMENTS

FULLY SPRINKLERED

ORIG	ADDENDUM #1	2/20/13
BY	REVISIONS	DATE



"CONFIDENTIAL": THESE DRAWINGS MUST BE RETURNED TO FACILITIES MANAGEMENT SERVICE, PROJECT SECTION, UPON COMPLETION, OR FINAL USE BY THE CONTRACTOR FOR BIDDING PURPOSES.

ASBESTOS WARNING: ASBESTOS CONTAINING BUILDING MATERIALS (ACBM) ARE PRESENT THROUGHOUT THE FACILITY. IF CONTRACTORS FIND ACBM, OR SUSPECT FINDING ACBM, THEY SHALL IMMEDIATELY STOP WORK AND CONTACT THE PROJECT COTR.

SCALING NOTES: FULL SIZE V.A. "E" SHEETS (SCALE AS INDICATED) AND HALF SIZE V.A. "D" SHEETS (1/2 THE SCALE INDICATED LETTER SIZE DRAWINGS ARE NOT TO SCALE)

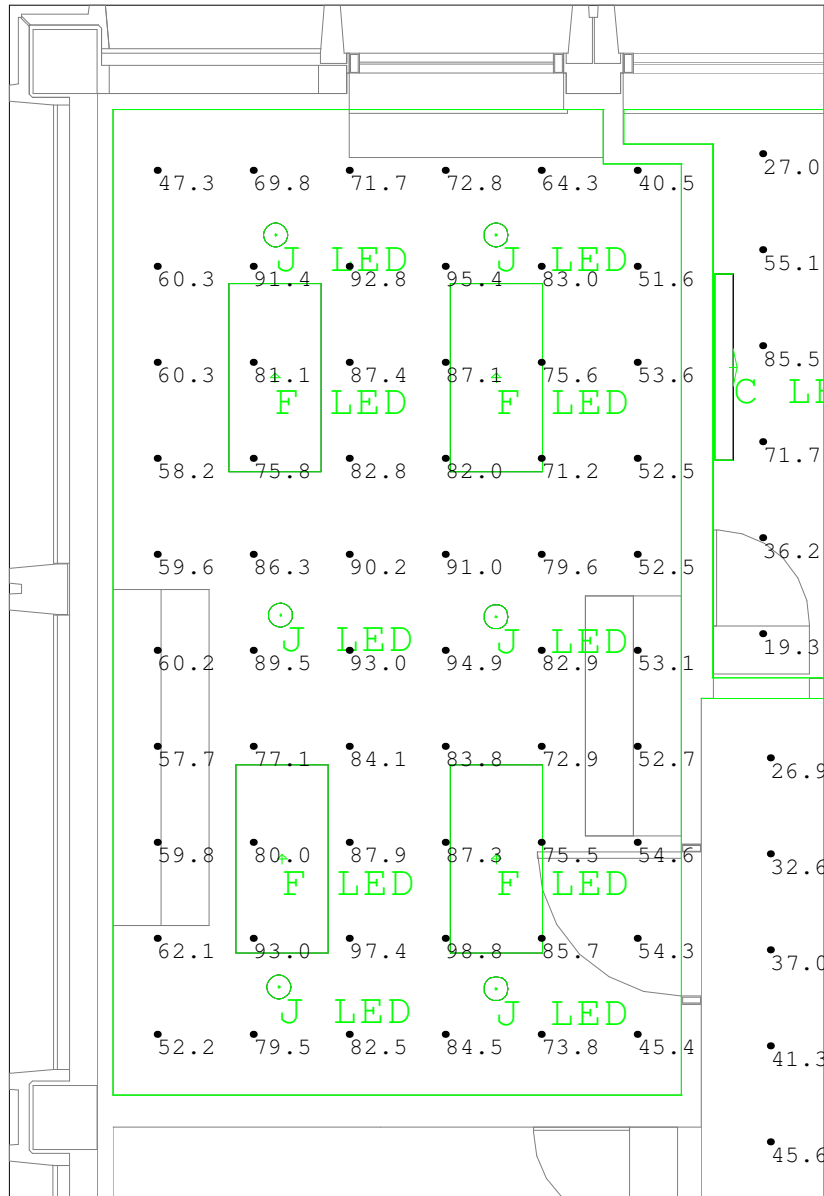
GENERAL NOTE: CONTRACTORS AND ARCHITECT/ENGINEERING FIRMS ARE RESPONSIBLE FOR THE FIELD VERIFICATION OF ALL EXISTING CONDITIONS.

Project Title
RENOVATE
WARD 5 EAST

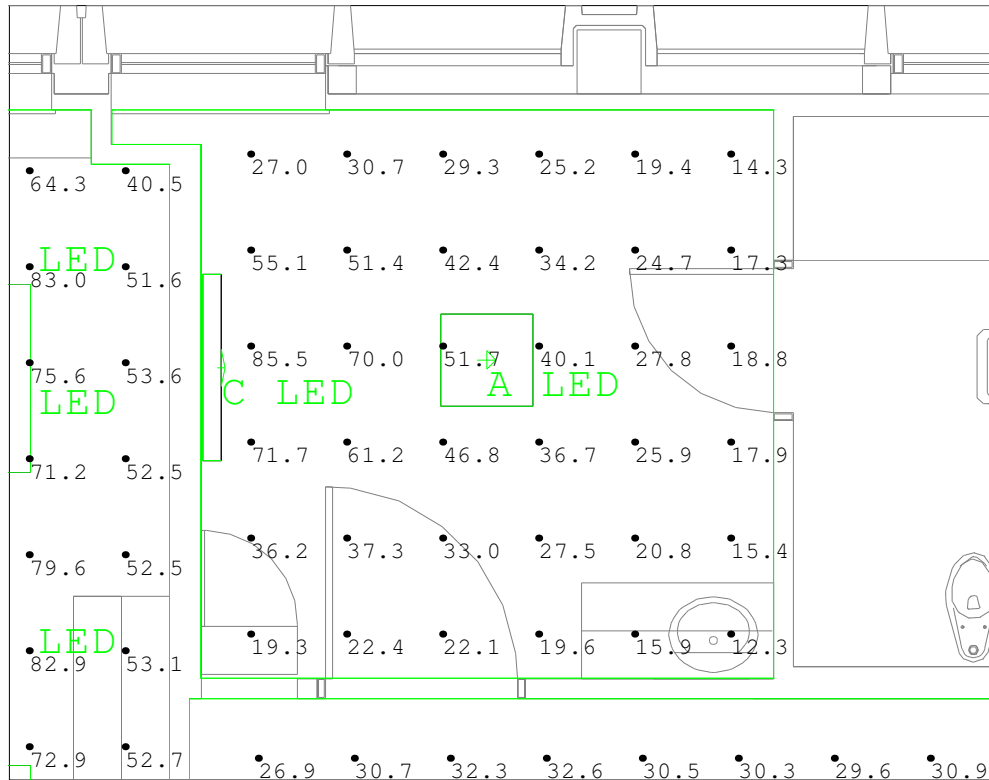
Drawing Title	FIFTH FLOOR - WARD EAST ELECTRICAL SPECIAL SYSTEMS PLAN & DIAGRAMS
Building Number	47
Location	ASHEVILLE, NC

Date	12/21/12
Project No.	637-11-119
DRAWING NO.	E103
Dwg	70 of 78



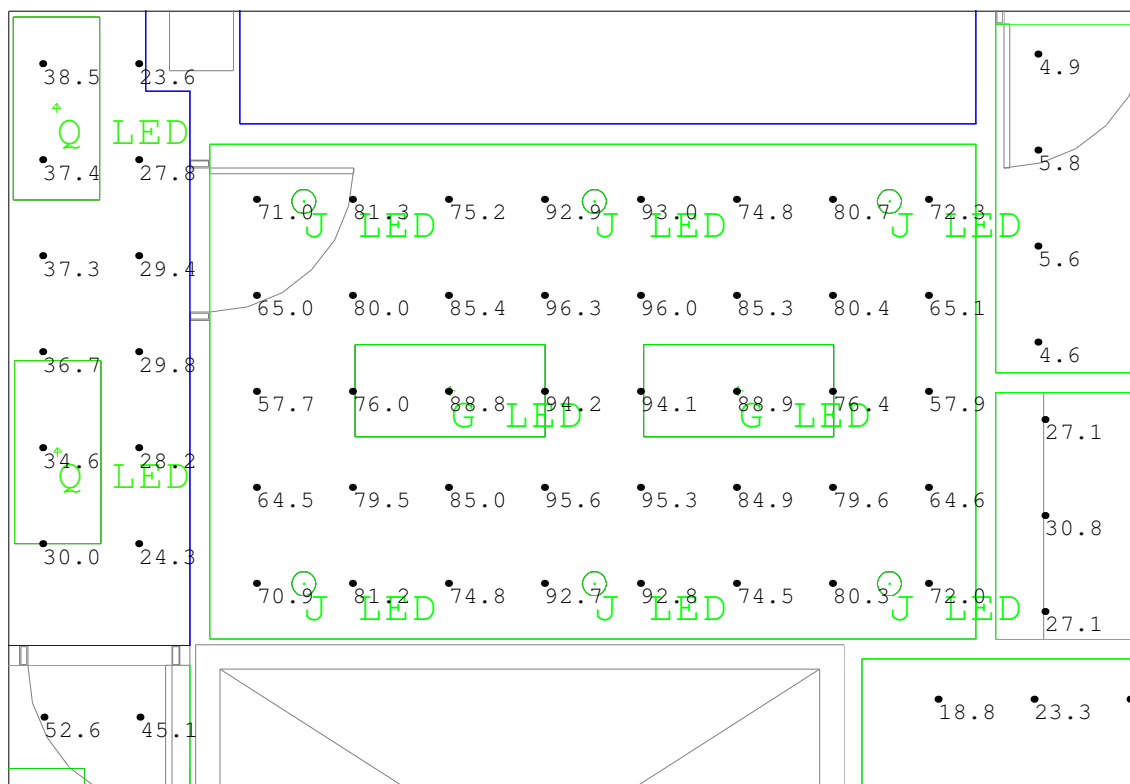


Calculation Summary					
Label	Avg	Max	Min	Avg/Min	Max/Min
Bedroom #1 5E501_Workplane	37.75	84.8	8.6	4.39	9.86
Bedroom #12 5E512_Workplane	33.53	85.5	12.3	2.73	6.95
Chemo 5E526_Workplane	31.74	60.3	22.7	1.40	2.66
Clean Work 5E523_Floor	22.95	28.6	17.7	1.30	1.62
CNL Office 5E517_Workplane	28.98	36.9	22.0	1.32	1.68
Conf_Training 5E530_Workplane	80.42	96.3	57.7	1.39	1.67
Corridors_Floor	32.86	63.0	11.9	2.76	5.29
Elec_Floor	12.89	14.0	10.9	1.18	1.28
Head Nurse 5E531_Workplane	56.51	67.2	45.1	1.25	1.49
ISO Bedroom #7 5E507_Workplane	25.37	85.1	6.5	3.90	13.09
PCC 5E521_Workplane	32.49	40.1	27.1	1.20	1.48
Soiled Hold 5E520_Floor	5.03	5.8	3.8	1.32	1.53
Staff Lounge 5E511_Workplane	73.73	98.8	40.5	1.82	2.44
Staff Toilet 5E528_Floor	5.43	8.6	2.3	2.36	3.74
Storage 5E529_Floor	7.12	9.4	3.5	2.03	2.69
Supply 5E522_Floor	29.10	40.1	14.6	1.99	2.75
Toilet #1 5E501A_Floor	30.00	37.2	21.2	1.42	1.75



Bedroom #12 5E5012
Scale: 1 inch= 4 Ft.

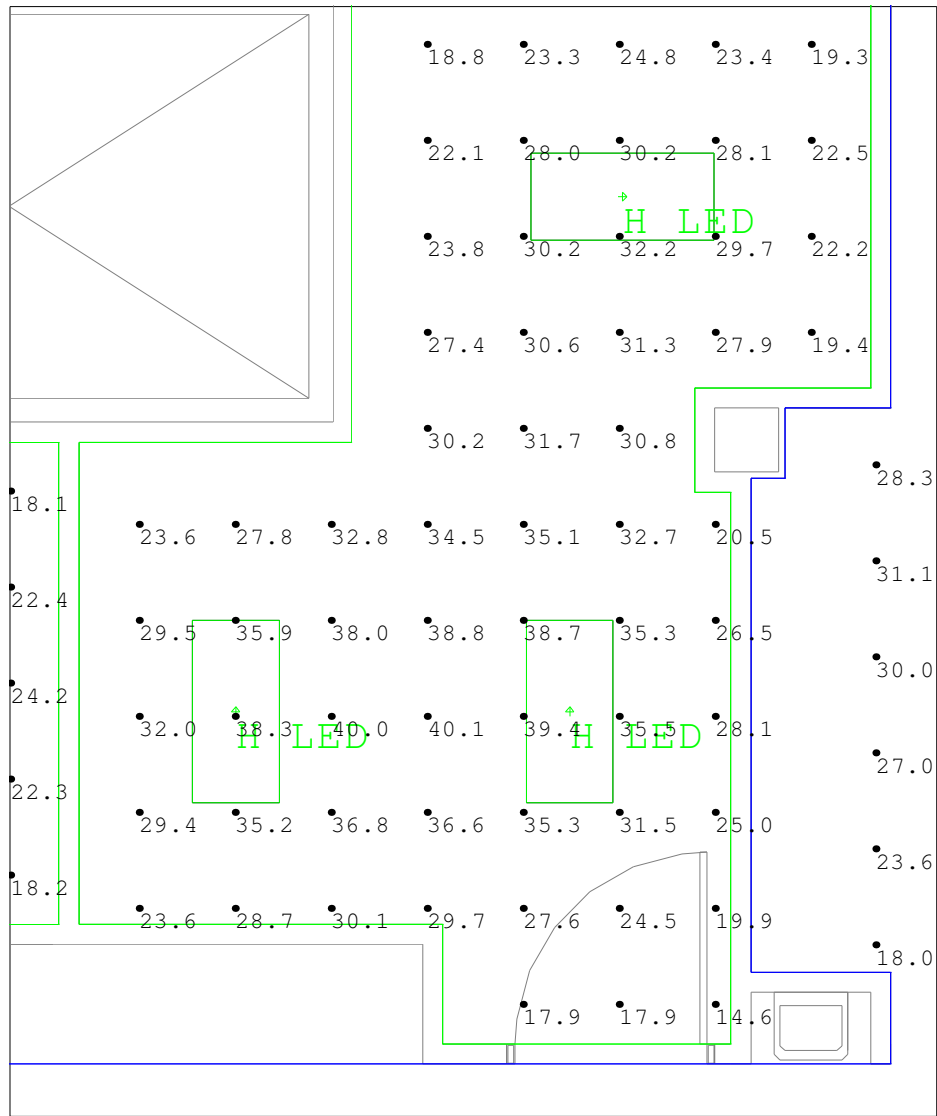
Calculation Summary					
Label	Avg	Max	Min	Avg/Min	Max/Min
Bedroom #1 5E501_Workplane	37.75	84.8	8.6	4.39	9.86
Bedroom #12 5E512_Workplane	33.53	85.5	12.3	2.73	6.95
Chemo 5E526_Workplane	31.74	60.3	22.7	1.40	2.66
Clean Work 5E523_Floor	22.95	28.6	17.7	1.30	1.62
CNL Office 5E517_Workplane	28.98	36.9	22.0	1.32	1.68
Conf_Training 5E530_Workplane	80.42	96.3	57.7	1.39	1.67
Corridors_Floor	32.86	63.0	11.9	2.76	5.29
Elec_Floor	12.89	14.0	10.9	1.18	1.28
Head Nurse 5E531_Workplane	56.51	67.2	45.1	1.25	1.49
ISO Bedroom #7 5E507_Workplane	25.37	85.1	6.5	3.90	13.09
PCC 5E521_Workplane	32.49	40.1	27.1	1.20	1.48
Soiled Hold 5E520_Floor	5.03	5.8	3.8	1.32	1.53
Staff Lounge 5E511_Workplane	73.73	98.8	40.5	1.82	2.44
Staff Toilet 5E528_Floor	5.43	8.6	2.3	2.36	3.74
Storage 5E529_Floor	7.12	9.4	3.5	2.03	2.69
Supply 5E522_Floor	29.10	40.1	14.6	1.99	2.75
Toilet #1 5E501A_Floor	30.00	37.2	21.2	1.42	1.75



Conference/Training 5E530

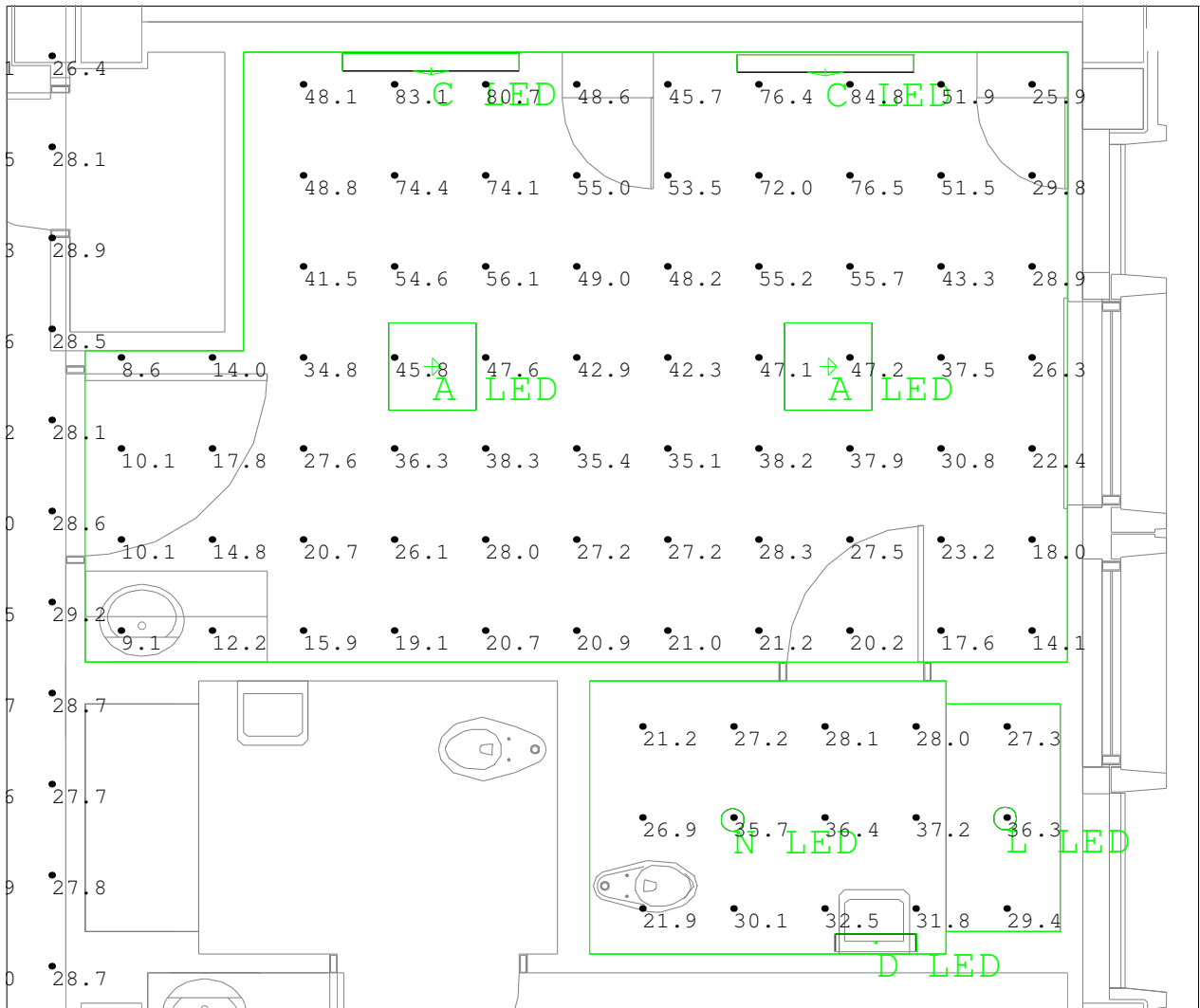
Scale: 1 inch= 4 Ft.

Calculation Summary					
Label	Avg	Max	Min	Avg/Min	Max/Min
Bedroom #1 5E501_Workplane	37.75	84.8	8.6	4.39	9.86
Bedroom #12 5E512_Workplane	33.53	85.5	12.3	2.73	6.95
Chemo 5E526_Workplane	31.74	60.3	22.7	1.40	2.66
Clean Work 5E523_Floor	22.95	28.6	17.7	1.30	1.62
CNL Office 5E517_Workplane	28.98	36.9	22.0	1.32	1.68
Conf_Training 5E530_Workplane	80.42	96.3	57.7	1.39	1.67
Corridors_Floor	32.86	63.0	11.9	2.76	5.29
Elec_Floor	12.89	14.0	10.9	1.18	1.28
Head Nurse 5E531_Workplane	56.51	67.2	45.1	1.25	1.49
ISO Bedroom #7 5E507_Workplane	25.37	85.1	6.5	3.90	13.09
PCC 5E521_Workplane	32.49	40.1	27.1	1.20	1.48
Soiled Hold 5E520_Floor	5.03	5.8	3.8	1.32	1.53
Staff Lounge 5E511_Workplane	73.73	98.8	40.5	1.82	2.44
Staff Toilet 5E528_Floor	5.43	8.6	2.3	2.36	3.74
Storage 5E529_Floor	7.12	9.4	3.5	2.03	2.69
Supply 5E522_Floor	29.10	40.1	14.6	1.99	2.75
Toilet #1 5E501A_Floor	30.00	37.2	21.2	1.42	1.75



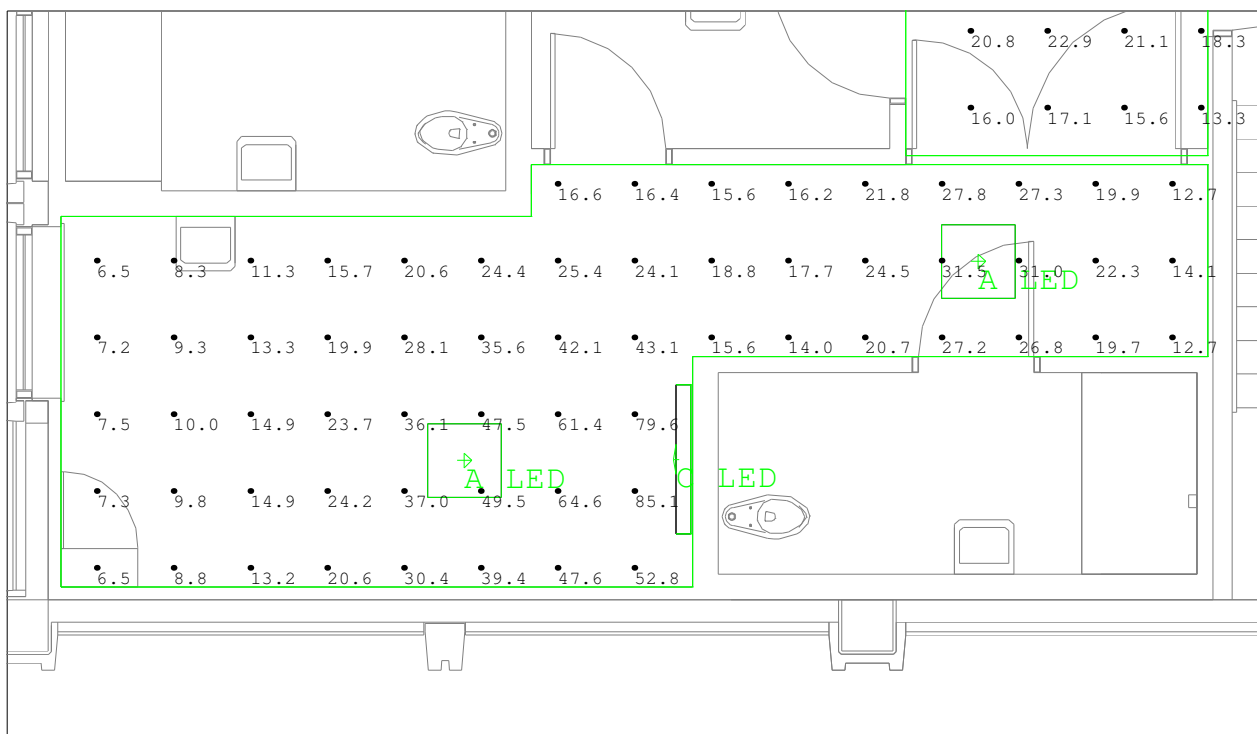
Supply 5E522
Scale: 1 inch= 4 Ft.

Calculation Summary					
Label	Avg	Max	Min	Avg/Min	Max/Min
Bedroom #1 5E501_Workplane	37.75	84.8	8.6	4.39	9.86
Bedroom #12 5E512_Workplane	33.53	85.5	12.3	2.73	6.95
Chemo 5E526_Workplane	31.74	60.3	22.7	1.40	2.66
Clean Work 5E523_Floor	22.95	28.6	17.7	1.30	1.62
CNL Office 5E517_Workplane	28.98	36.9	22.0	1.32	1.68
Conf_Training 5E530_Workplane	80.42	96.3	57.7	1.39	1.67
Corridors_Floor	32.86	63.0	11.9	2.76	5.29
Elec_Floor	12.89	14.0	10.9	1.18	1.28
Head Nurse 5E531_Workplane	56.51	67.2	45.1	1.25	1.49
ISO Bedroom #7 5E507_Workplane	25.37	85.1	6.5	3.90	13.09
PCC 5E521_Workplane	32.49	40.1	27.1	1.20	1.48
Soiled Hold 5E520_Floor	5.03	5.8	3.8	1.32	1.53
Staff Lounge 5E511_Workplane	73.73	98.8	40.5	1.82	2.44
Staff Toilet 5E528_Floor	5.43	8.6	2.3	2.36	3.74
Storage 5E529_Floor	7.12	9.4	3.5	2.03	2.69
Supply 5E522_Floor	29.10	40.1	14.6	1.99	2.75
Toilet #1 5E501A_Floor	30.00	37.2	21.2	1.42	1.75



Bedroom #1 5E501, Toilet #1 5E501A
Scale: 1 inch= 4 Ft.

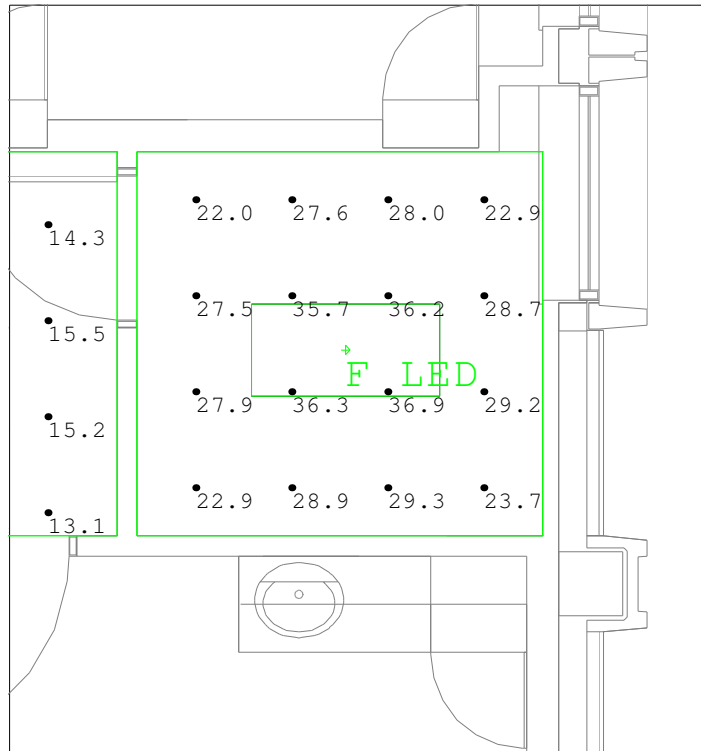
Calculation Summary					
Label	Avg	Max	Min	Avg/Min	Max/Min
Bedroom #1 5E501_Workplane	37.75	84.8	8.6	4.39	9.86
Bedroom #12 5E512_Workplane	33.53	85.5	12.3	2.73	6.95
Chemo 5E526_Workplane	31.74	60.3	22.7	1.40	2.66
Clean Work 5E523_Floor	22.95	28.6	17.7	1.30	1.62
CNL Office 5E517_Workplane	28.98	36.9	22.0	1.32	1.68
Conf_Training 5E530_Workplane	80.42	96.3	57.7	1.39	1.67
Corridors_Floor	32.86	63.0	11.9	2.76	5.29
Elec_Floor	12.89	14.0	10.9	1.18	1.28
Head Nurse 5E531_Workplane	56.51	67.2	45.1	1.25	1.49
ISO Bedroom #7 5E507_Workplane	25.37	85.1	6.5	3.90	13.09
PCC 5E521_Workplane	32.49	40.1	27.1	1.20	1.48
Soiled Hold 5E520_Floor	5.03	5.8	3.8	1.32	1.53
Staff Lounge 5E511_Workplane	73.73	98.8	40.5	1.82	2.44
Staff Toilet 5E528_Floor	5.43	8.6	2.3	2.36	3.74
Storage 5E529_Floor	7.12	9.4	3.5	2.03	2.69
Supply 5E522_Floor	29.10	40.1	14.6	1.99	2.75
Toilet #1 5E501A_Floor	30.00	37.2	21.2	1.42	1.75



ISO Bedroom #7 5E507

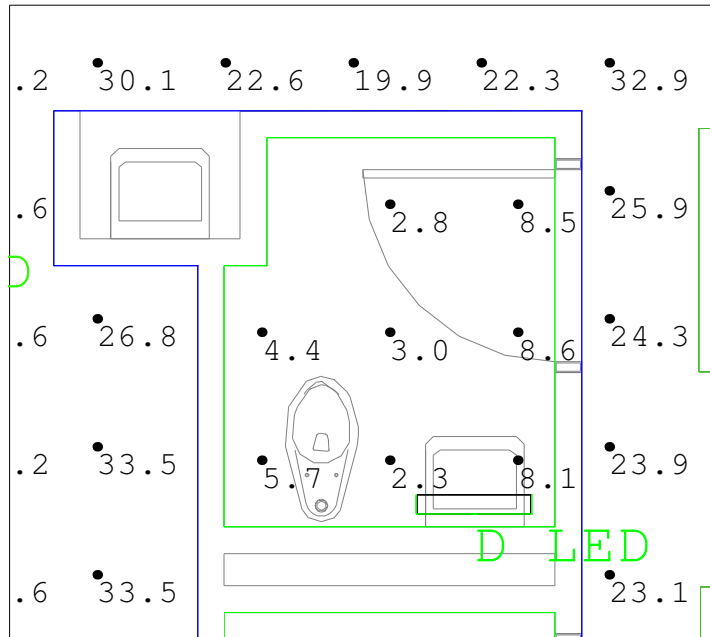
Scale: 1 inch= 5 Ft.

Calculation Summary					
Label	Avg	Max	Min	Avg/Min	Max/Min
Bedroom #1 5E501_Workplane	37.75	84.8	8.6	4.39	9.86
Bedroom #12 5E512_Workplane	33.53	85.5	12.3	2.73	6.95
Chemo 5E526_Workplane	31.74	60.3	22.7	1.40	2.66
Clean Work 5E523_Floor	22.95	28.6	17.7	1.30	1.62
CNL Office 5E517_Workplane	28.98	36.9	22.0	1.32	1.68
Conf_Training 5E530_Workplane	80.42	96.3	57.7	1.39	1.67
Corridors_Floor	32.86	63.0	11.9	2.76	5.29
Elec_Floor	12.89	14.0	10.9	1.18	1.28
Head Nurse 5E531_Workplane	56.51	67.2	45.1	1.25	1.49
ISO Bedroom #7 5E507_Workplane	25.37	85.1	6.5	3.90	13.09
PCC 5E521_Workplane	32.49	40.1	27.1	1.20	1.48
Soiled Hold 5E520_Floor	5.03	5.8	3.8	1.32	1.53
Staff Lounge 5E511_Workplane	73.73	98.8	40.5	1.82	2.44
Staff Toilet 5E528_Floor	5.43	8.6	2.3	2.36	3.74
Storage 5E529_Floor	7.12	9.4	3.5	2.03	2.69
Supply 5E522_Floor	29.10	40.1	14.6	1.99	2.75
Toilet #1 5E501A_Floor	30.00	37.2	21.2	1.42	1.75

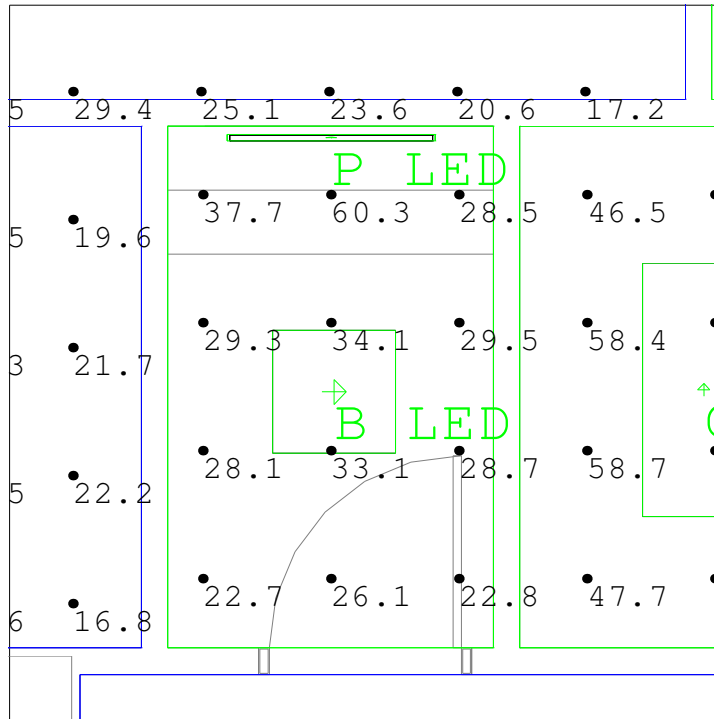


CNL Office 5E517
Scale: 1 inch= 4 Ft.

Calculation Summary					
Label	Avg	Max	Min	Avg/Min	Max/Min
Bedroom #1 5E501_Workplane	37.75	84.8	8.6	4.39	9.86
Bedroom #12 5E512_Workplane	33.53	85.5	12.3	2.73	6.95
Chemo 5E526_Workplane	31.74	60.3	22.7	1.40	2.66
Clean Work 5E523_Floor	22.95	28.6	17.7	1.30	1.62
CNL Office 5E517_Workplane	28.98	36.9	22.0	1.32	1.68
Conf_Training 5E530_Workplane	80.42	96.3	57.7	1.39	1.67
Corridors_Floor	32.86	63.0	11.9	2.76	5.29
Elec_Floor	12.89	14.0	10.9	1.18	1.28
Head Nurse 5E531_Workplane	56.51	67.2	45.1	1.25	1.49
ISO Bedroom #7 5E507_Workplane	25.37	85.1	6.5	3.90	13.09
PCC 5E521_Workplane	32.49	40.1	27.1	1.20	1.48
Soiled Hold 5E520_Floor	5.03	5.8	3.8	1.32	1.53
Staff Lounge 5E511_Workplane	73.73	98.8	40.5	1.82	2.44
Staff Toilet 5E528_Floor	5.43	8.6	2.3	2.36	3.74
Storage 5E529_Floor	7.12	9.4	3.5	2.03	2.69
Supply 5E522_Floor	29.10	40.1	14.6	1.99	2.75
Toilet #1 5E501A_Floor	30.00	37.2	21.2	1.42	1.75

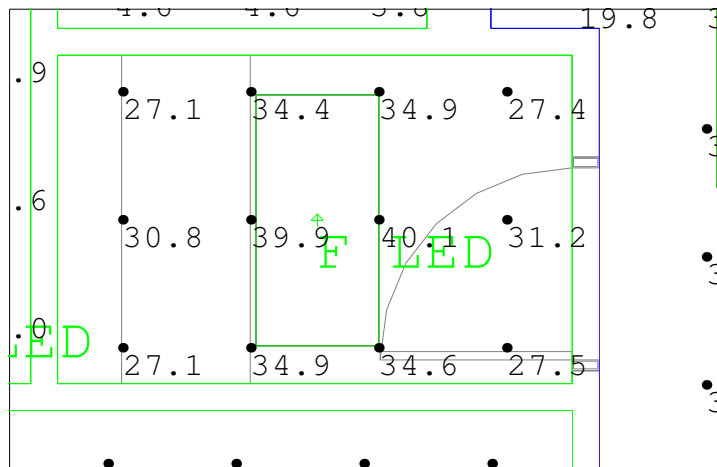


Calculation Summary					
Label	Avg	Max	Min	Avg/Min	Max/Min
Bedroom #1 5E501_Workplane	37.75	84.8	8.6	4.39	9.86
Bedroom #12 5E512_Workplane	33.53	85.5	12.3	2.73	6.95
Chemo 5E526_Workplane	31.74	60.3	22.7	1.40	2.66
Clean Work 5E523_Floor	22.95	28.6	17.7	1.30	1.62
CNL Office 5E517_Workplane	28.98	36.9	22.0	1.32	1.68
Conf_Training 5E530_Workplane	80.42	96.3	57.7	1.39	1.67
Corridors_Floor	32.86	63.0	11.9	2.76	5.29
Elec_Floor	12.89	14.0	10.9	1.18	1.28
Head Nurse 5E531_Workplane	56.51	67.2	45.1	1.25	1.49
ISO Bedroom #7 5E507_Workplane	25.37	85.1	6.5	3.90	13.09
PCC 5E521_Workplane	32.49	40.1	27.1	1.20	1.48
Soiled Hold 5E520_Floor	5.03	5.8	3.8	1.32	1.53
Staff Lounge 5E511_Workplane	73.73	98.8	40.5	1.82	2.44
Staff Toilet 5E528_Floor	5.43	8.6	2.3	2.36	3.74
Storage 5E529_Floor	7.12	9.4	3.5	2.03	2.69
Supply 5E522_Floor	29.10	40.1	14.6	1.99	2.75
Toilet #1 5E501A_Floor	30.00	37.2	21.2	1.42	1.75



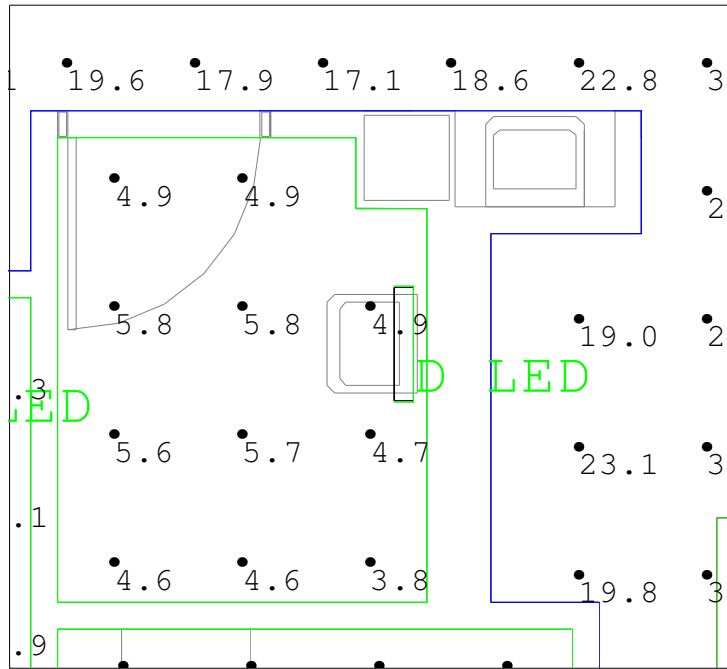
Chemo 5E526
Scale: 1 inch= 3 Ft.

Calculation Summary					
Label	Avg	Max	Min	Avg/Min	Max/Min
Bedroom #1 5E501_Workplane	37.75	84.8	8.6	4.39	9.86
Bedroom #12 5E512_Workplane	33.53	85.5	12.3	2.73	6.95
Chemo 5E526_Workplane	31.74	60.3	22.7	1.40	2.66
Clean Work 5E523_Floor	22.95	28.6	17.7	1.30	1.62
CNL Office 5E517_Workplane	28.98	36.9	22.0	1.32	1.68
Conf_Training 5E530_Workplane	80.42	96.3	57.7	1.39	1.67
Corridors_Floor	32.86	63.0	11.9	2.76	5.29
Elec_Floor	12.89	14.0	10.9	1.18	1.28
Head Nurse 5E531_Workplane	56.51	67.2	45.1	1.25	1.49
ISO Bedroom #7 5E507_Workplane	25.37	85.1	6.5	3.90	13.09
PCC 5E521_Workplane	32.49	40.1	27.1	1.20	1.48
Soiled Hold 5E520_Floor	5.03	5.8	3.8	1.32	1.53
Staff Lounge 5E511_Workplane	73.73	98.8	40.5	1.82	2.44
Staff Toilet 5E528_Floor	5.43	8.6	2.3	2.36	3.74
Storage 5E529_Floor	7.12	9.4	3.5	2.03	2.69
Supply 5E522_Floor	29.10	40.1	14.6	1.99	2.75
Toilet #1 5E501A_Floor	30.00	37.2	21.2	1.42	1.75



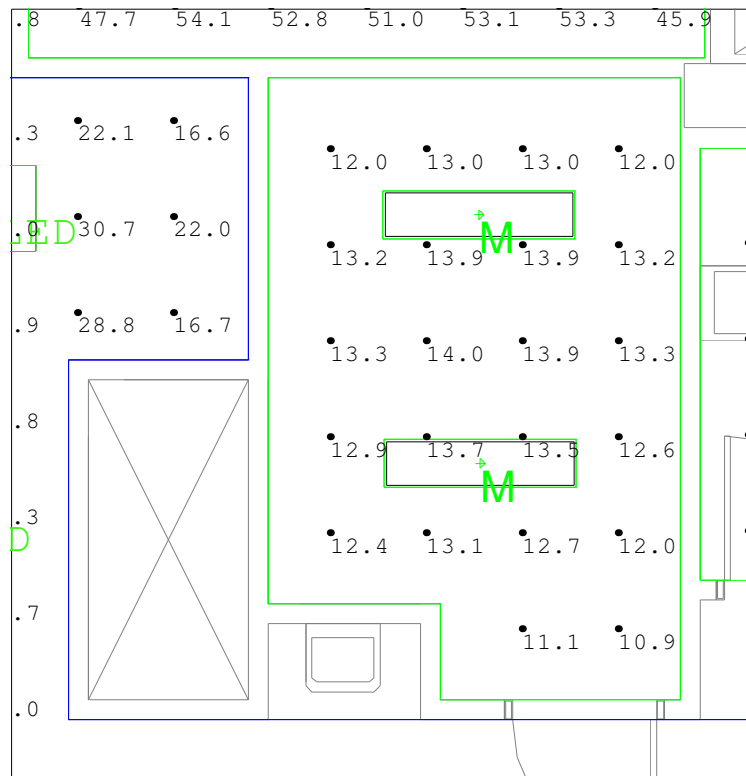
PCC 5E521
Scale: 1 inch= 3 Ft.

Calculation Summary					
Label	Avg	Max	Min	Avg/Min	Max/Min
Bedroom #1 5E501_Workplane	37.75	84.8	8.6	4.39	9.86
Bedroom #12 5E512_Workplane	33.53	85.5	12.3	2.73	6.95
Chemo 5E526_Workplane	31.74	60.3	22.7	1.40	2.66
Clean Work 5E523_Floor	22.95	28.6	17.7	1.30	1.62
CNL Office 5E517_Workplane	28.98	36.9	22.0	1.32	1.68
Conf_Training 5E530_Workplane	80.42	96.3	57.7	1.39	1.67
Corridors_Floor	32.86	63.0	11.9	2.76	5.29
Elec_Floor	12.89	14.0	10.9	1.18	1.28
Head Nurse 5E531_Workplane	56.51	67.2	45.1	1.25	1.49
ISO Bedroom #7 5E507_Workplane	25.37	85.1	6.5	3.90	13.09
PCC 5E521_Workplane	32.49	40.1	27.1	1.20	1.48
Soiled Hold 5E520_Floor	5.03	5.8	3.8	1.32	1.53
Staff Lounge 5E511_Workplane	73.73	98.8	40.5	1.82	2.44
Staff Toilet 5E528_Floor	5.43	8.6	2.3	2.36	3.74
Storage 5E529_Floor	7.12	9.4	3.5	2.03	2.69
Supply 5E522_Floor	29.10	40.1	14.6	1.99	2.75
Toilet #1 5E501A_Floor	30.00	37.2	21.2	1.42	1.75



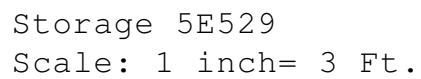
Soiled Hold 5E520
Scale: 1 inch= 3 Ft.

Calculation Summary					
Label	Avg	Max	Min	Avg/Min	Max/Min
Bedroom #1 5E501_Workplane	37.75	84.8	8.6	4.39	9.86
Bedroom #12 5E512_Workplane	33.53	85.5	12.3	2.73	6.95
Chemo 5E526_Workplane	31.74	60.3	22.7	1.40	2.66
Clean Work 5E523_Floor	22.95	28.6	17.7	1.30	1.62
CNL Office 5E517_Workplane	28.98	36.9	22.0	1.32	1.68
Conf_Training 5E530_Workplane	80.42	96.3	57.7	1.39	1.67
Corridors_Floor	32.86	63.0	11.9	2.76	5.29
Elec_Floor	12.89	14.0	10.9	1.18	1.28
Head Nurse 5E531_Workplane	56.51	67.2	45.1	1.25	1.49
ISO Bedroom #7 5E507_Workplane	25.37	85.1	6.5	3.90	13.09
PCC 5E521_Workplane	32.49	40.1	27.1	1.20	1.48
Soiled Hold 5E520_Floor	5.03	5.8	3.8	1.32	1.53
Staff Lounge 5E511_Workplane	73.73	98.8	40.5	1.82	2.44
Staff Toilet 5E528_Floor	5.43	8.6	2.3	2.36	3.74
Storage 5E529_Floor	7.12	9.4	3.5	2.03	2.69
Supply 5E522_Floor	29.10	40.1	14.6	1.99	2.75
Toilet #1 5E501A_Floor	30.00	37.2	21.2	1.42	1.75

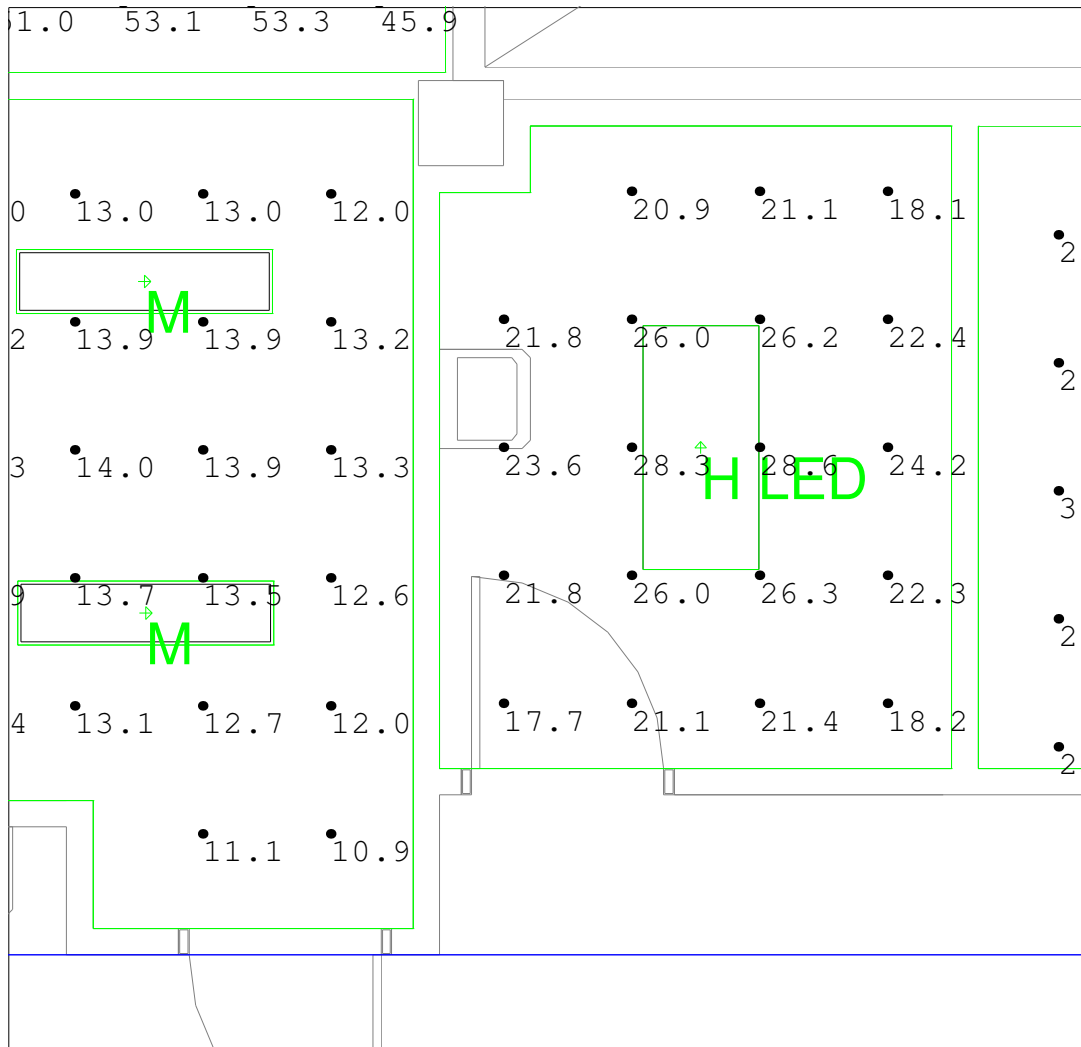


Elec/Comm 5E524
Scale: 1 inch= 4 Ft.

Calculation Summary					
Label	Avg	Max	Min	Avg/Min	Max/Min
Bedroom #1 5E501_Workplane	37.75	84.8	8.6	4.39	9.86
Bedroom #12 5E512_Workplane	33.53	85.5	12.3	2.73	6.95
Chemo 5E526_Workplane	31.74	60.3	22.7	1.40	2.66
Clean Work 5E523_Floor	22.95	28.6	17.7	1.30	1.62
CNL Office 5E517_Workplane	28.98	36.9	22.0	1.32	1.68
Conf_Training 5E530_Workplane	80.42	96.3	57.7	1.39	1.67
Corridors_Floor	32.86	63.0	11.9	2.76	5.29
Elec_Floor	12.89	14.0	10.9	1.18	1.28
Head Nurse 5E531_Workplane	56.51	67.2	45.1	1.25	1.49
ISO Bedroom #7 5E507_Workplane	25.37	85.1	6.5	3.90	13.09
PCC 5E521_Workplane	32.49	40.1	27.1	1.20	1.48
Soiled Hold 5E520_Floor	5.03	5.8	3.8	1.32	1.53
Staff Lounge 5E511_Workplane	73.73	98.8	40.5	1.82	2.44
Staff Toilet 5E528_Floor	5.43	8.6	2.3	2.36	3.74
Storage 5E529_Floor	7.12	9.4	3.5	2.03	2.69
Supply 5E522_Floor	29.10	40.1	14.6	1.99	2.75
Toilet #1 5E501A_Floor	30.00	37.2	21.2	1.42	1.75

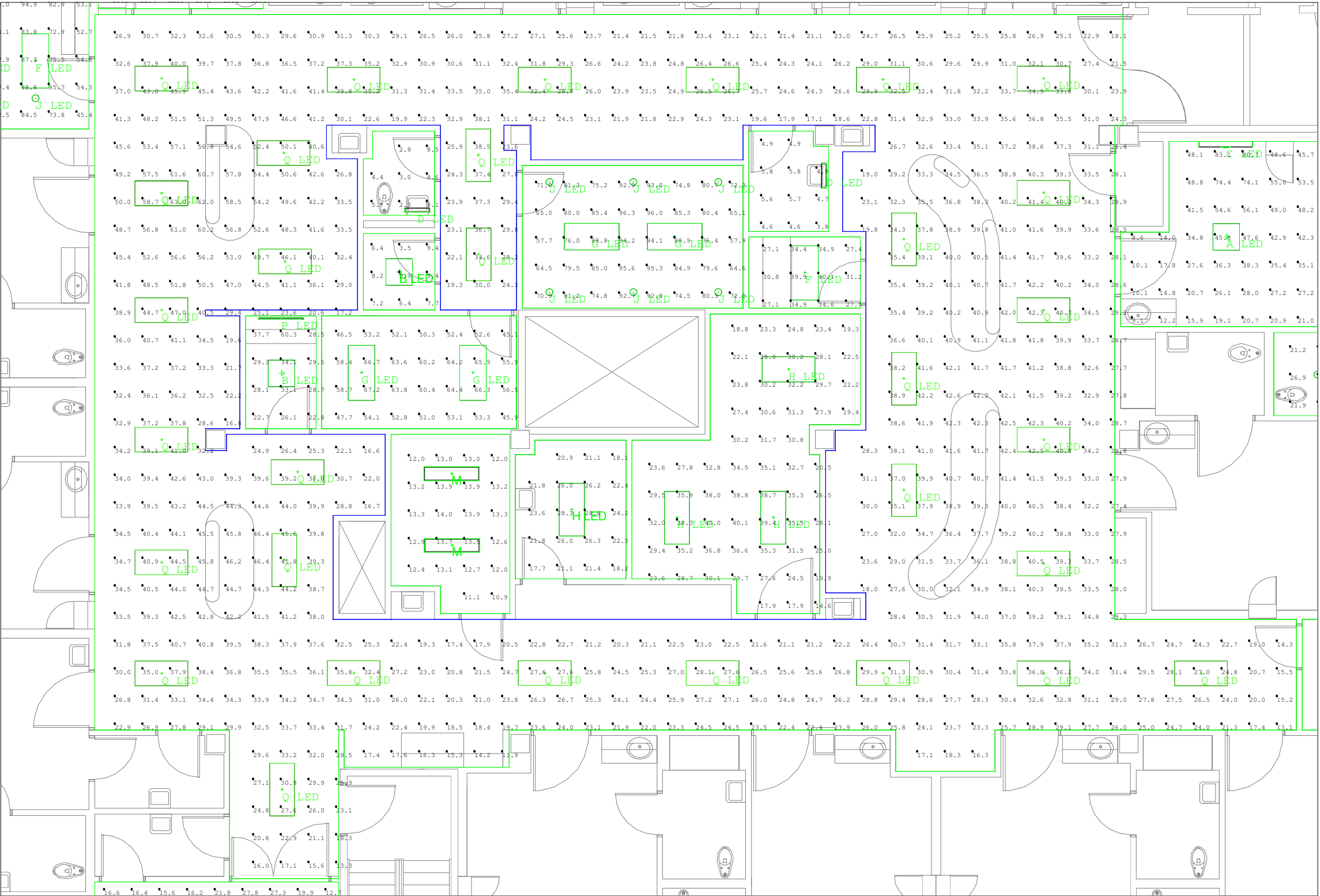


Calculation Summary					
Label	Avg	Max	Min	Avg/Min	Max/Min
Bedroom #1 5E501_Workplane	37.75	84.8	8.6	4.39	9.86
Bedroom #12 5E512_Workplane	33.53	85.5	12.3	2.73	6.95
Chemo 5E526_Workplane	31.74	60.3	22.7	1.40	2.66
Clean Work 5E523_Floor	22.95	28.6	17.7	1.30	1.62
CNL Office 5E517_Workplane	28.98	36.9	22.0	1.32	1.68
Conf_Training 5E530_Workplane	80.42	96.3	57.7	1.39	1.67
Corridors_Floor	32.86	63.0	11.9	2.76	5.29
Elec_Floor	12.89	14.0	10.9	1.18	1.28
Head Nurse 5E531_Workplane	56.51	67.2	45.1	1.25	1.49
ISO Bedroom #7 5E507_Workplane	25.37	85.1	6.5	3.90	13.09
PCC 5E521_Workplane	32.49	40.1	27.1	1.20	1.48
Soiled Hold 5E520_Floor	5.03	5.8	3.8	1.32	1.53
Staff Lounge 5E511_Workplane	73.73	98.8	40.5	1.82	2.44
Staff Toilet 5E528_Floor	5.43	8.6	2.3	2.36	3.74
Storage 5E529_Floor	7.12	9.4	3.5	2.03	2.69
Supply 5E522_Floor	29.10	40.1	14.6	1.99	2.75
Toilet #1 5E501A_Floor	30.00	37.2	21.2	1.42	1.75



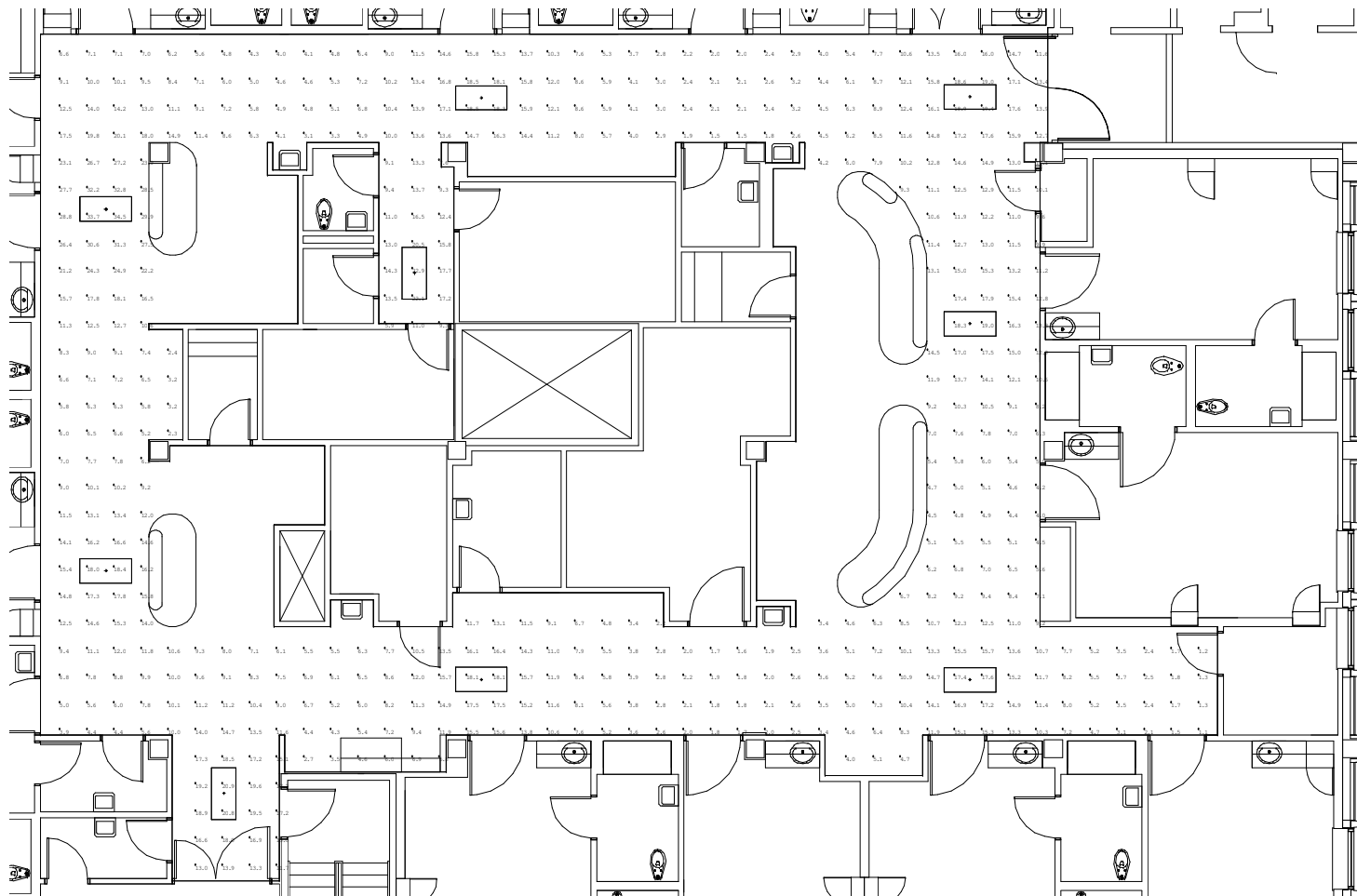
Clean Work 5E523
Scale: 1 inch= 3 Ft.

Calculation Summary					
Label	Avg	Max	Min	Avg/Min	Max/Min
Bedroom #1 5E501_Workplane	37.75	84.8	8.6	4.39	9.86
Bedroom #12 5E512_Workplane	33.53	85.5	12.3	2.73	6.95
Chemo 5E526_Workplane	31.74	60.3	22.7	1.40	2.66
Clean Work 5E523_Floor	22.95	28.6	17.7	1.30	1.62
CNL Office 5E517_Workplane	28.98	36.9	22.0	1.32	1.68
Conf_Training 5E530_Workplane	80.42	96.3	57.7	1.39	1.67
Corridors_Floor	32.86	63.0	11.9	2.76	5.29
Elec_Floor	12.89	14.0	10.9	1.18	1.28
Head Nurse 5E531_Workplane	56.51	67.2	45.1	1.25	1.49
ISO Bedroom #7 5E507_Workplane	25.37	85.1	6.5	3.90	13.09
PCC 5E521_Workplane	32.49	40.1	27.1	1.20	1.48
Soiled Hold 5E520_Floor	5.03	5.8	3.8	1.32	1.53
Staff Lounge 5E511_Workplane	73.73	98.8	40.5	1.82	2.44
Staff Toilet 5E528_Floor	5.43	8.6	2.3	2.36	3.74
Storage 5E529_Floor	7.12	9.4	3.5	2.03	2.69
Supply 5E522_Floor	29.10	40.1	14.6	1.99	2.75
Toilet #1 5E501A_Floor	30.00	37.2	21.2	1.42	1.75



Calculation Summary					
Label	Avg	Max	Min	Avg/Min	Max/Min
Bedroom #1 5E501_Workplane	37.75	84.8	8.6	4.39	9.86
Bedroom #12 5E512_Workplane	33.53	85.5	12.3	2.73	6.95
Chemo 5E526_Workplane	31.74	60.3	22.7	1.40	2.66
Clean Work 5E523_Floor	22.95	28.6	17.7	1.30	1.62
CNL Office 5E517_Workplane	28.98	36.9	22.0	1.32	1.68
Conf_Training 5E530_Workplane	80.42	96.3	57.7	1.39	1.67
Corridors Floor	32.86	63.0	11.9	2.76	5.29
Elec Floor	12.89	14.0	10.9	1.18	1.28
Head Nurse 5E531_Workplane	56.51	67.2	45.1	1.25	1.49
ISO Bedroom #7 5E507_Workplane	25.37	85.1	6.5	3.90	13.09
PCC 5E521_Workplane	32.49	40.1	27.1	1.20	1.48
Soiled Hold 5E520_Floor	5.03	5.8	3.8	1.32	1.53
Staff Lounge 5E511_Workplane	73.73	98.8	40.5	1.82	2.44
Staff Toilet 5E528_Floor	5.43	8.6	2.3	2.36	3.74
Storage 5E529_Floor	7.12	9.4	3.5	2.03	2.69
Supply 5E522_Floor	29.10	40.1	14.6	1.99	2.75
Toilet #1 5E501A_Floor	30.00	37.2	21.2	1.42	1.75

Corridors
Scale: 1 inch= 8 Ft.



Calculation Summary					
Label	Avg	Max	Min	Avg/Min	Max/Min
Corridors_Floor	10.08	34.5	1.1	9.16	31.36