

Installing and Using WinSCP Client

- [Installing WinSCP Client](#) Pg 1
 - [Using WinSCP Client](#) Pg 6
-

Installing WinSCP client

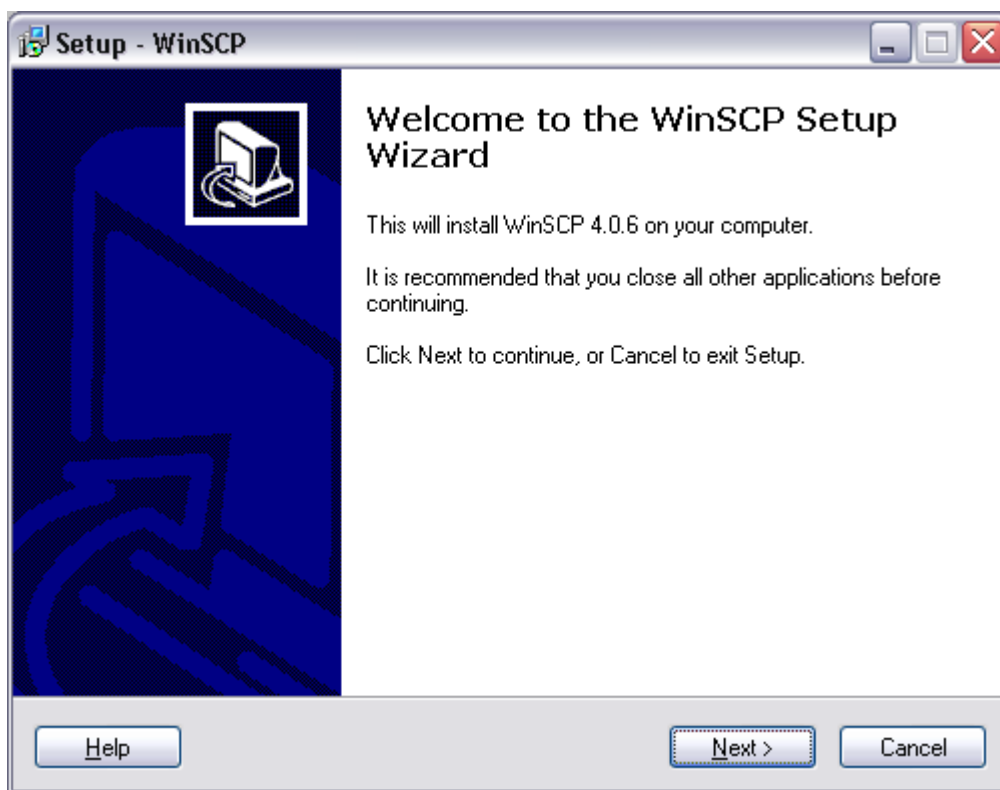
The first thing to do is obtain the WinSCP Client software from the software maker's web site:

<http://winscp.net/eng/download.php>

From the list choose the most up-to-date release available. At the time of writing this is WinSCP 4.0.6. Click on the `Installation Package` to download the software.

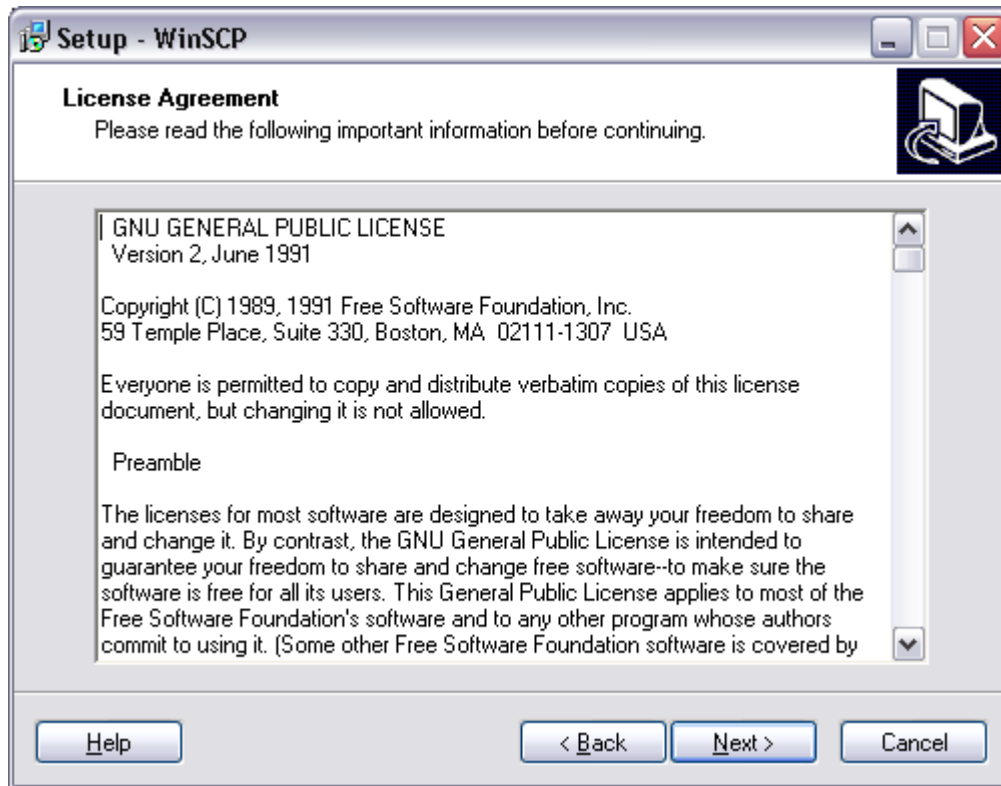
Next click on the downloaded file to begin installation.

- The `Welcome` screen will appear:

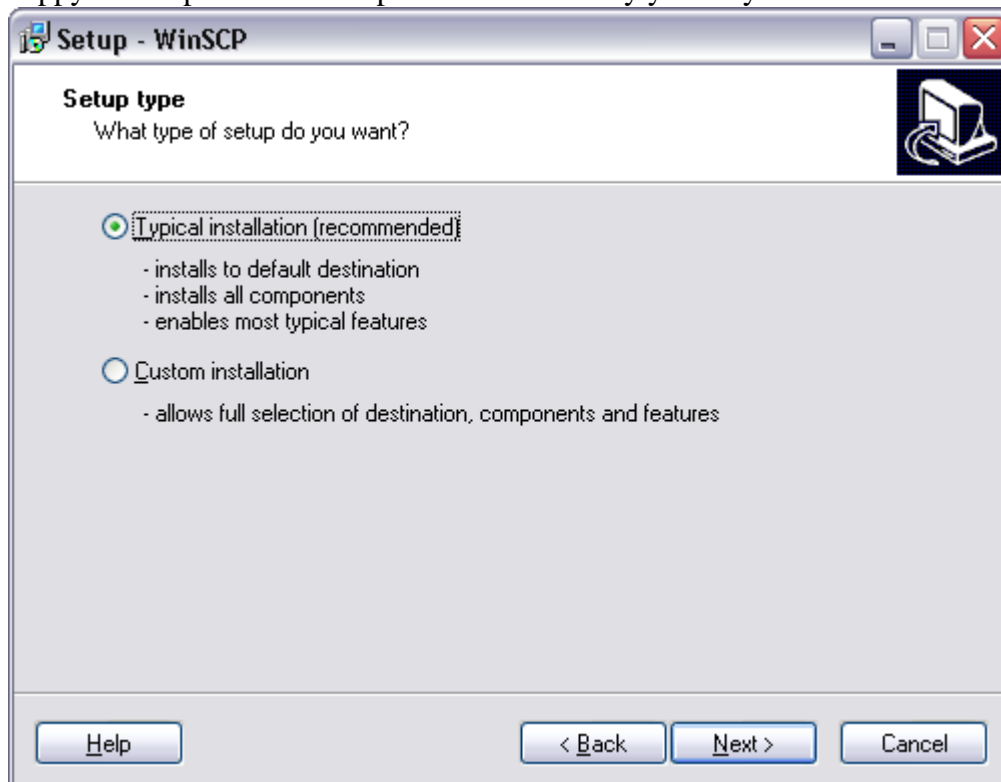


Click on the `Next` button.

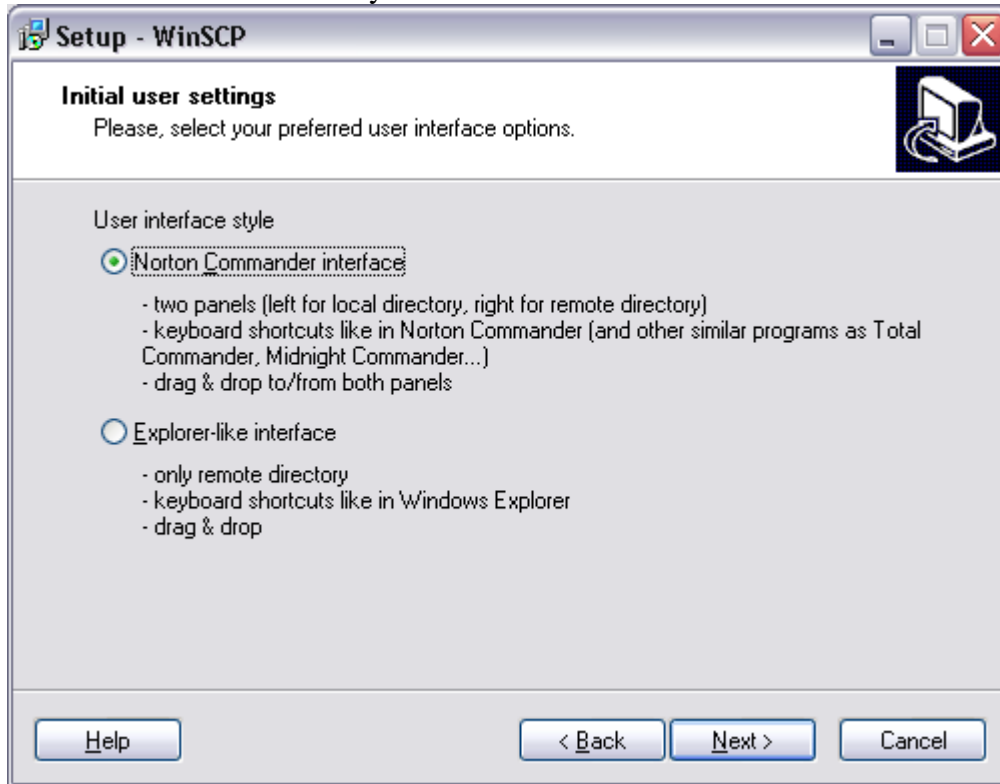
- The `License Agreement` appears confirming that the software is Free and Open Source. Click on the `Next` button.



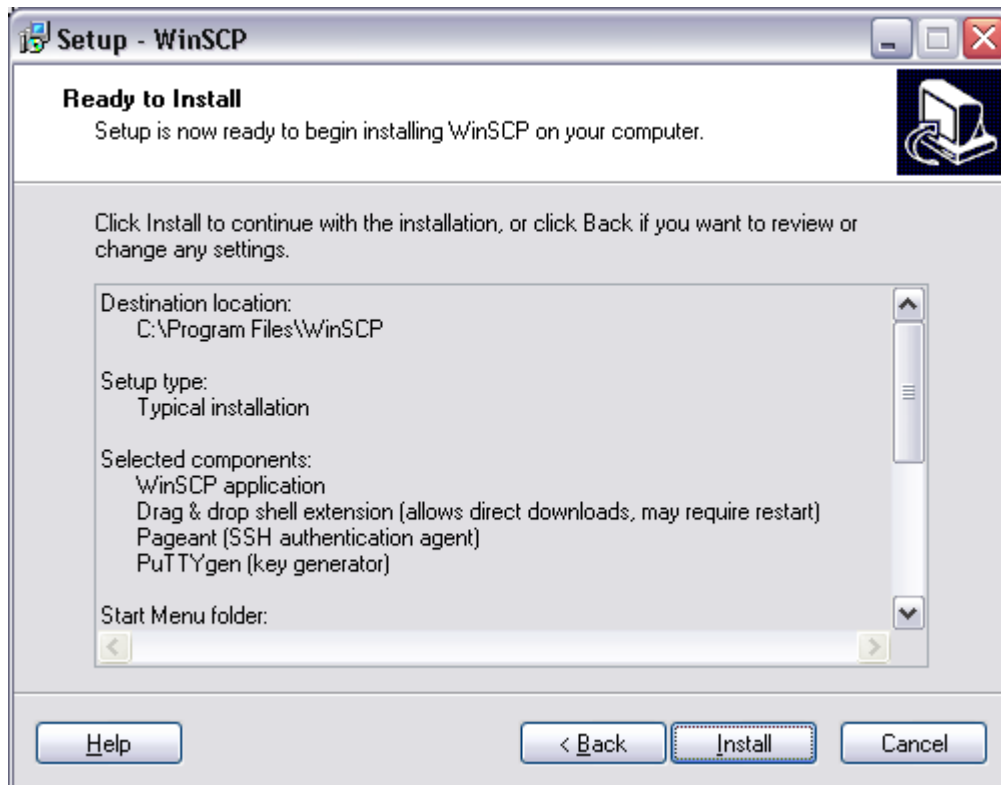
- The `Setup type` screen now opens. Click on the `Next` button to continue if you are happy to accept the default options. Alternatively you may customize the installation.



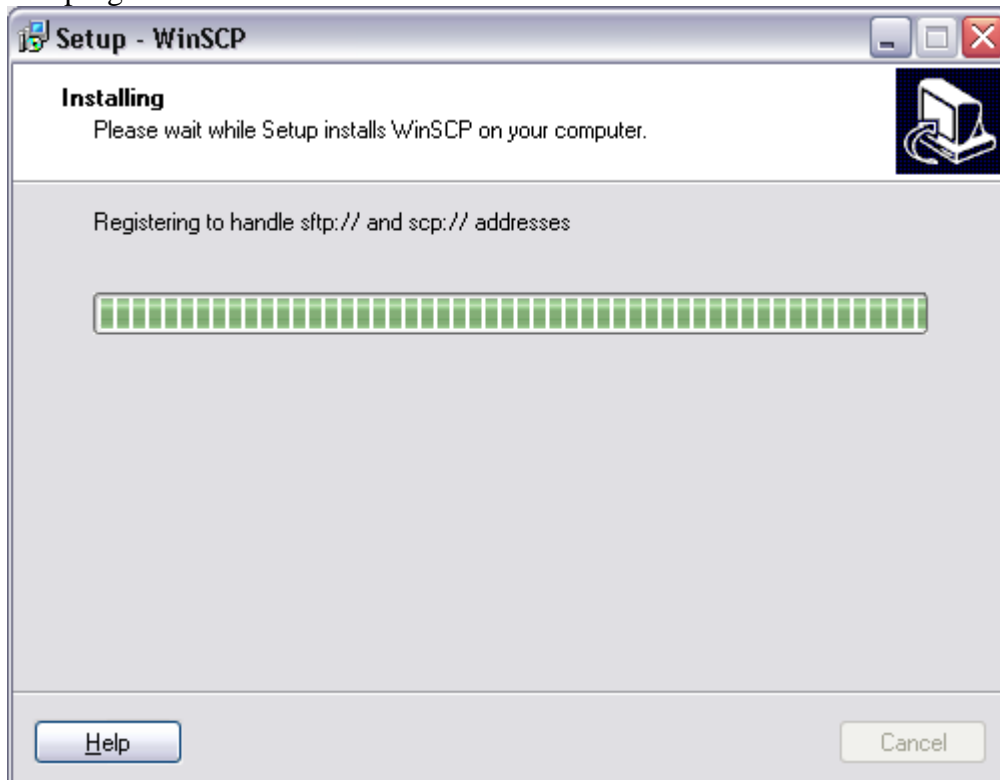
- Next select the Initial User Settings screen opens. Choose the Norton Commander Interface if it is not already selected. Click on the Next button to continue.



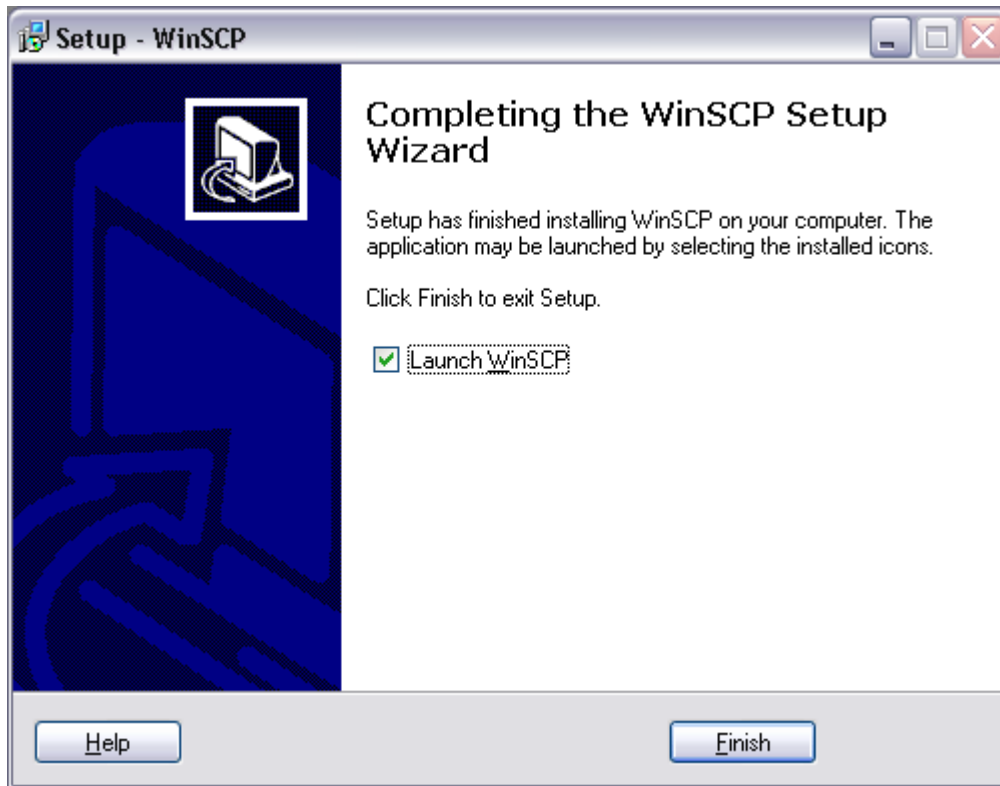
- Finally the **Ready to Install** screen shows which components you have chosen to install and where this will be put on your machine. If you want to adjust anything click on the **Back** button to make changes. If you are happy with your choices press the **Next** button.



- The program will now be installed.



- Once installation is complete you will see the completion screen.



If you do not want to start the program on exiting setup, uncheck the `Launch WinSCP` tick box.

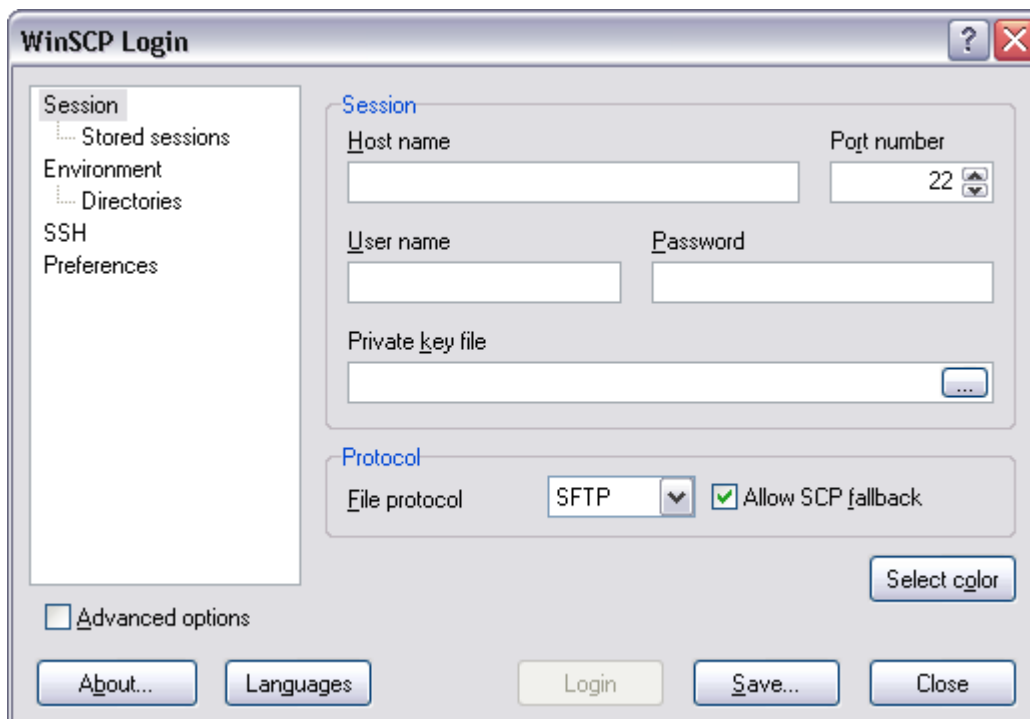
Click on the `Finish` button to exit setup.

Using WinSCP Client

- [Initial Setup](#) Pg 6
- [Accessing Your Web Space](#) Pg 9

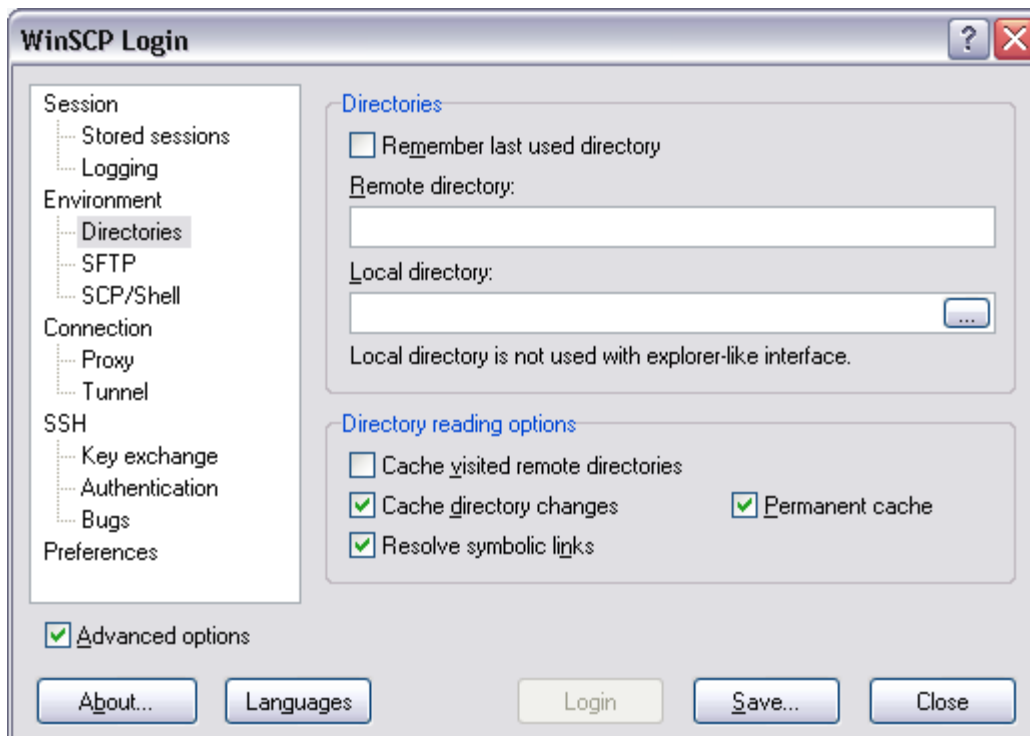
Initial Setup

Once the installation of the program is complete you can open the program and begin to use it. To open the program either click on the program icon on your desktop or find the program in your file programs list ([Start] > [All Programs] > [WinSCP] > [WinSCP]). The interface is similar to older FTP or File Transfer Protocol Clients.

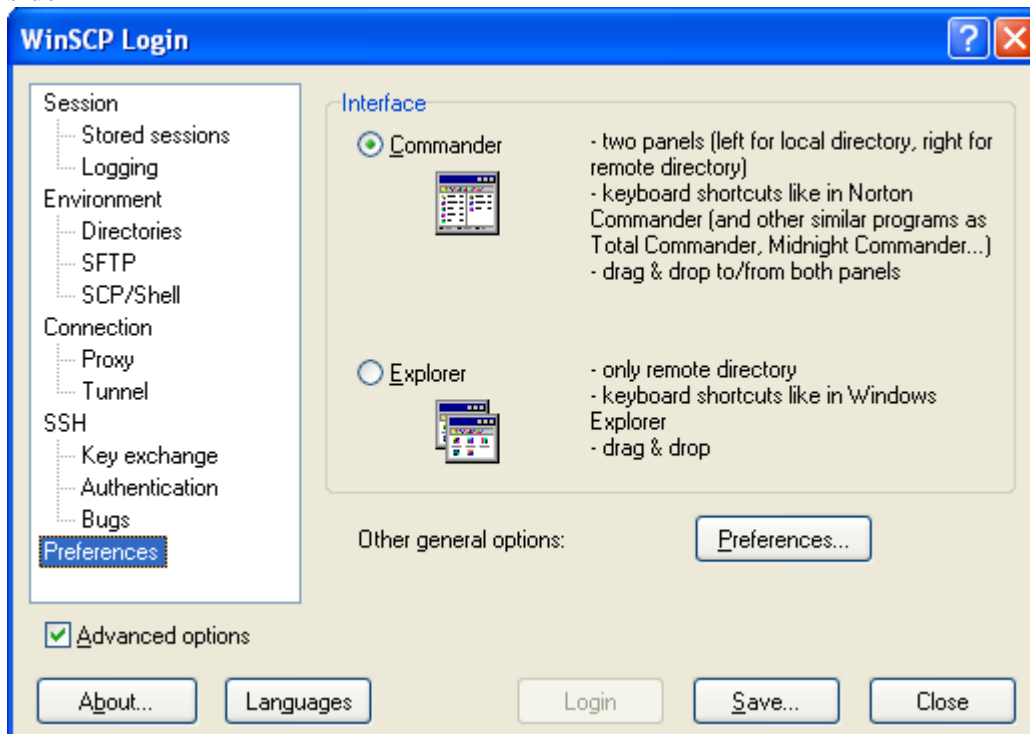


To avoid problems where cached (saved) information gets out of date, you should configure the cache settings (you should only have to do this once).

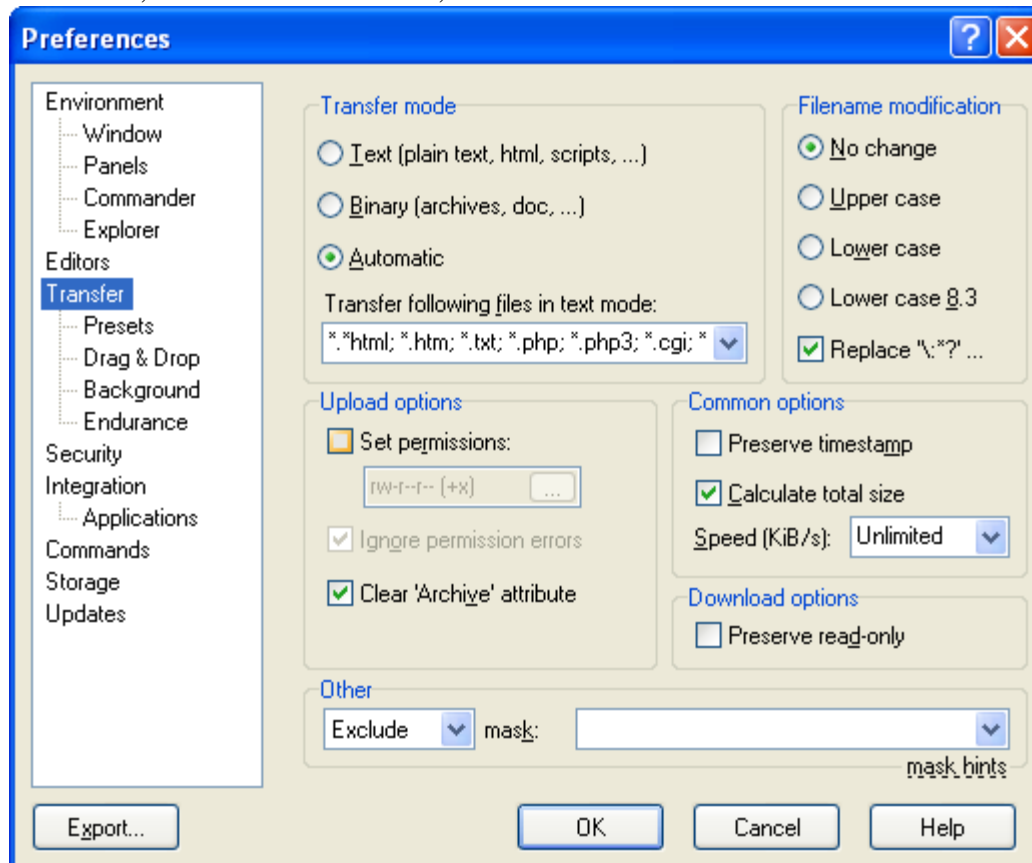
- In the left-hand panel of the WinSCP Login screen, click on Directories
- Check the Advanced Options tick box.
- Untick Cache visited remote directories
- Click Save



To avoid Permission Errors in WinSCP also select Preferences from the options on the left hand side



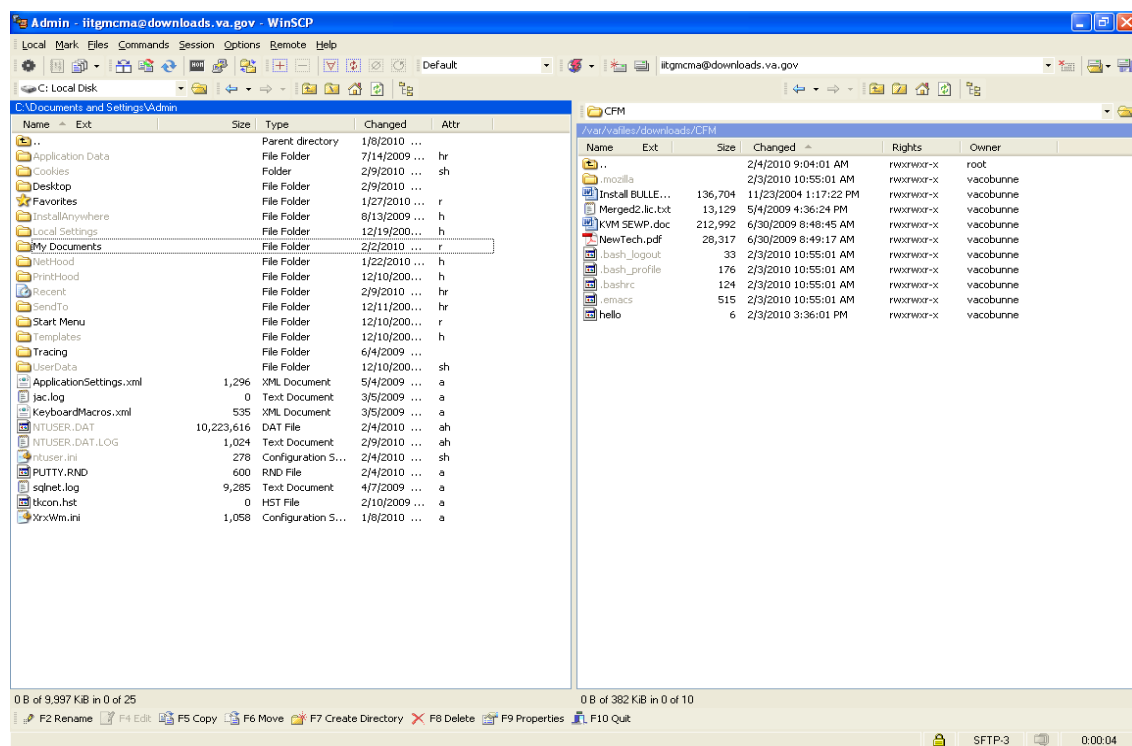
Click the Preferences tab and on the next window select Transfer and make sure your settings are: Transfer Mode = Automatic, transfer following files in text mode = *.html; *.htm; *.txt; *.php; *.php3; *.cgi, etc; Filename modification = No change and Replace special characters; Upload options = Clear Archive attribute; Common options = Calculate total size, speed = Unlimited; Other = exclude mask, then select save.




Accessing your web space

To access your users' Web space (filestore) you first need to make a secure connection to your Home Folder by follow the procedure outlined below:

- Open the program
- You will see the Login screen appear.
- Fill in your connection details as follows:
 1. Host Name: Your Account Hostname
 2. Username: Your Account Username e.g.oucs1234
 3. Password: Your Account password
- Click on the Login button. You will now see a Connecting to Remote Host box which will show various details as the program connects to your GNU/Linux account.
- Once the connection has been successful the program interface will change to the Norton Commander interface layout:



- The left-hand panel shows your local files (on your own computer), the right-hand panel shows the contents of your home folder on the GNU/Linux server. The `.bash_history`, `.bash_logout`, etc. files are normal and should not be removed.
- To quit the program press <F10> or press the F10 Quit button near the bottom of the screen: 
- An alert box will appear asking you to confirm termination of your connection and to close the program. Click OK to exit the program.