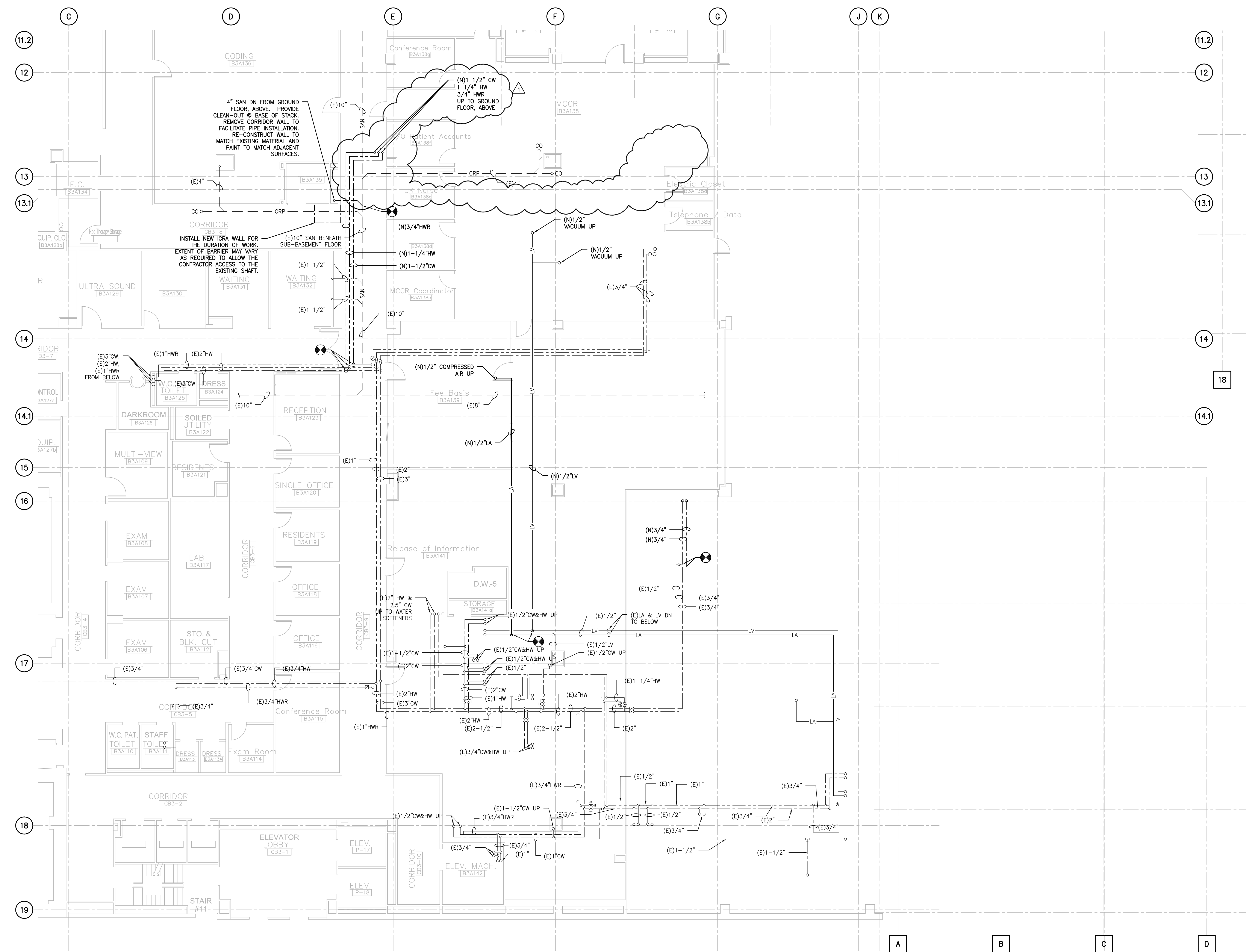


three eighths inch = one foot  
one eighth inch = one foot  
one quarter inch = one foot  
one half inch = one foot  
three quarters inch = one foot  
one inch = one foot  
one and one half inches = one foot  
two inches = one foot  
three inches = one foot



- GENERAL SHEET NOTES:**
1. REFER TO DRAWING P-001 FOR NOTES, SYMBOLS AND ABBREVIATIONS.
  2. COORDINATE ALL SYSTEM SHUTDOWN DATES AND DURATIONS WITH THE RESIDENT ENGINEER. APPROVAL MUST BE GIVEN TO THE CONTRACTOR IN WRITTEN FORM PRIOR TO ANY UTILITY OUTAGE.
  3. VERIFY LOCATION AND DIMENSIONS OF EXISTING EQUIPMENT, DUCTWORK, AND OTHER POTENTIAL INTERFERENCES AND COORDINATE ALL WORK WITH OTHER TRADES PRIOR TO THE START OF CONSTRUCTION.
  4. DOMESTIC WATER (COLD WATER, HOT WATER, AND HOT WATER RETURN) PIPING SHOWN ON THIS DRAWING IS LOCATED ABOVE THE CEILING OF THE SUB-BASEMENT.
  5. LABORATORY AIR AND LABORATORY VACUUM PIPING SHOWN ON THIS DRAWING IS LOCATED ABOVE THE CEILING OF THE SUB-BASEMENT.
  6. SANITARY SEWER PIPING SHOWN ON THIS DRAWING IS LOCATED BELOW THE FLOOR LEVEL OF THE SUB-BASEMENT.

1 NEW WORK-SUB BASEMENT FLOOR PLAN  
SCALE: 1/8"=1'-0"

FINAL DOCUMENTS - FULLY SPRINKLERED

<b>CONSULTANTS:</b>		<b>ARCHITECT/ENGINEERS:</b>		<b>Drawing Title</b>		<b>Project Title</b>		<b>Project Number</b>		<b>Office of Construction and Facilities Management</b> 		
 NADASKAY KOPELSON ARCHITECTS ARCHITECTURE ENGINEERING PLANNING INTERIORS 95 WASHINGTON STREET MORRISTOWN, NJ 07960 T: (973) 538-5383 F: (973) 538-0916 116 JOHN ST, SUITE 2500, NEW YORK, NY 10038 T: (212) 962-7900 F: (212) 962-8111		 O'DONNELL & NACCARATO, INC. STRUCTURAL ENGINEERS 111 S. INDEPENDENCE MALL EAST SUITE 950 PHILADELPHIA PENNSYLVANIA 19106-2524 TELEPHONE: (215) 925-3788 FAX: (215) 927-1001 Project No. 2928.0017.00		 Miller-Remick LLC M.E.P. & Structural Engineering A Veteran Owned Small Business 1010 KINGS HIGHWAY SOUTH BUILDING ONE - 1st FLOOR CHERRY HILL, NEW JERSEY 08034 PHONE: (856)429-4000 FAX: (856)429-5002		NEW PLUMBING SUB-BASEMENT PLAN SCALE: 1/8" = 1'-0"		RENOVATIONS TO UPGRADE THE HVAC IN STERILIZATION, PROCESSING AND DISTRIBUTION			642-11-150	
<b>Revisions:</b>				<b>Approved Project Director</b>		<b>Location</b>		<b>Building Number</b>			<b>Drawing Number</b>	
3/14/13 Date						VAMC, PHILADELPHIA, PA		NO. 2			PL-101	
						<b>Date</b> August 17, 2012		<b>Checked</b> ADP		<b>Drawn</b> KD		
										Dwg. 62 of 84		