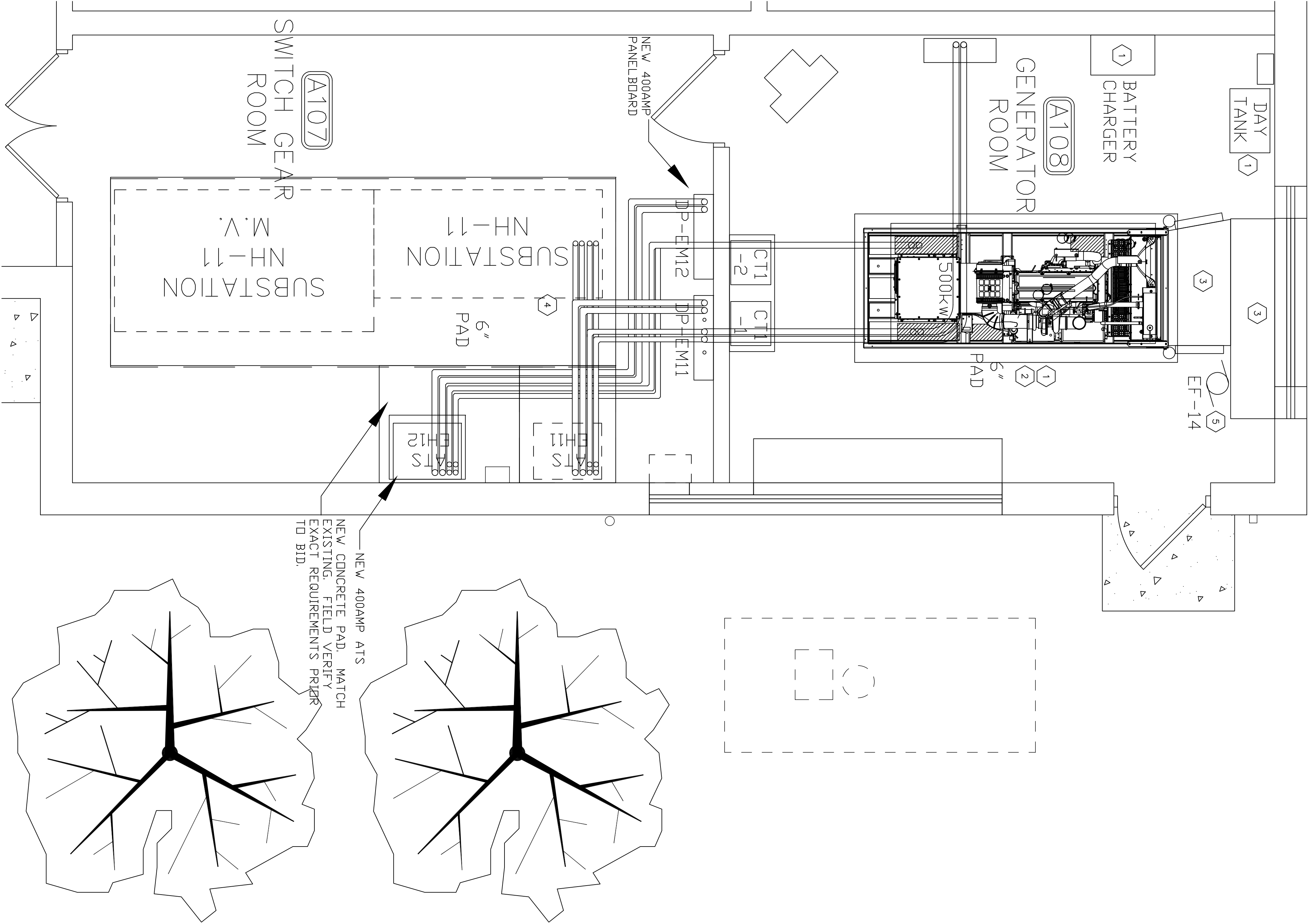


ELECTRICAL KEYNOTES

1. PROVIDE NEW GENERATOR, DAY TANK, AND BATTERY CHARGER AS SPECIFIED.
2. CONTRACTOR TO PROVIDE 6" CONCRETE ISOLATION PAD. PROVIDE 3,000PSI CONCRETE WITH #10 RE-BAR ON 16" CENTERS, ROUGH UP EXISTING SLAB ON GRAB PRIOR TO INSTALLATION OF NEW PAD. CONTRACTOR SHALL PROVIDE BONDING AGENT TO EXISTING SLAB PRIOR TO CONCRETE INSTALLATION. SIZE CONCRETE PAD PER GENERATOR SUPPLIER RECOMMENDATIONS. MINIMUM 6" EXTENSION BEYOND GENERATOR REQUIRED ON ALL SIDES. SEE DETAIL THIS PAGE.
3. NEW RE-CIRCULATION LOUVERS AND DISCHARGE AIR PLENUM BY MECHANICAL CONTRACTOR.
4. PROVIDE NEW 800 AMP FRAME WITH 400 AMP TRIP CIRCUIT BREAKER. LOCATE IN SPACE MADE AVAILABLE BY REMOVAL OF MCC-NHP1 BREAKER. MATCH EXISTING EQUIPMENT RATINGS.
5. RECONNECT EF-14.

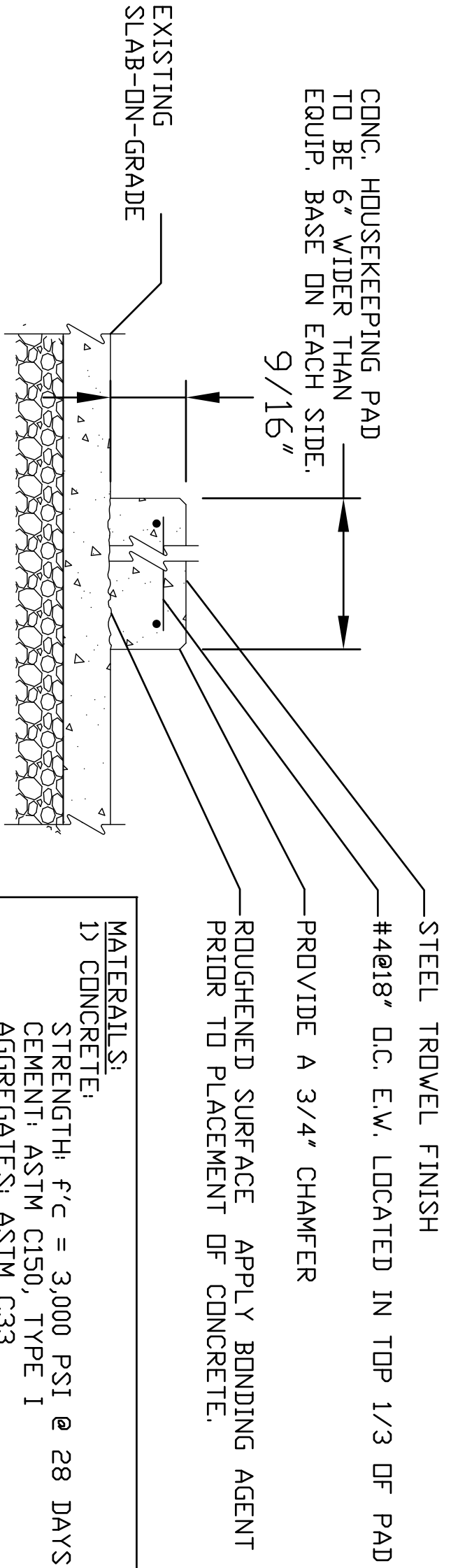
ELECTRICAL NOTES

- A. CONTRACTOR TO PROVIDE TEMPORARY EMERGENCY BACK-UP POWER SOURCE, SIZED TO MATCH NEW GENERATOR CAPACITY, PRIOR TO REMOVAL OF ANY EXISTING GENERATOR BEING REMOVED. CONTRACTOR SHALL MAINTAIN ALL ELECTRICAL SYSTEMS AND FULLY FUNCTIONAL PRIOR TO AND DURING ENTIRE CONSTRUCTION INCLUDING COMMISSIONING OF NEW GENERATOR SYSTEM AND COMPONENTS. CONTRACTOR TO PROVIDE AND MAINTAIN ADEQUATE AMOUNT OF FUEL FOR 24 HOURS OF RUNTIME AT FULL LOAD.
- B. CONTRACTOR TO FIELD VERIFY EXACT CONNECTION LOCATION OF TEMPORARY POWER.
- C. CONTRACTOR TO COORDINATE WITH VA REPRESENTATIVE PRIOR TO CONNECTION/MODIFICATION TO EXISTING SYSTEM.
- D. PROVIDE 3,000PSI, 6" CONCRETE PAD, COORDINATE EXACT FINAL SIZE WITH GENERATOR DIMENSIONS.
- E. CONTRACTOR IS RESPONSIBLE FOR SEALING PENETRATIONS RESULTING FROM THE INSTALLATION OF THEIR WORK.



BLDG#49 – CONCRETE PAD DETAIL

SCALE: NTS



- MATERIALS:**
- 1) CONCRETE: STRENGTH f'c = 3,000 PSI @ 28 DAYS CEMENT: ASTM C150, TYPE I AGGREGATE: ASTM C33
 - 2) REINFORCING STEEL: DEFORMED BARS: ASTM A615 GRADE 60, Fy= 60 KSI
 - 3) BONDING AGENT: EPOXY BONDING AGENT: ASTM C881

GENERAL NOTE:

ALL CONTRACTORS AND SUBCONTRACTORS SHALL VERIFY ALL DIMENSIONS BY MEASUREMENT AT THE BUILDING AND/OR SITE.

CONSTRUCTION DOCUMENT SUBMISSION

Veterans Administration		Project Title		Drawing Title		Project No.		Drawing No.	
POWER		STUDY OF EMERGENCY		GENERATOR INSTALLATION PLAN		618-12-104		1263-E202	
100% SUBMITTAL		100% SUBMITTAL		100% SUBMITTAL		100% SUBMITTAL		100% SUBMITTAL	
Building Number		Checked		Project		Building Number		Checked	
49		SPM		BRC		49		SPM	
Location		VA MEDICAL CENTER		ONE VETERANS DRIVE		MINNEAPOLIS, MN 55417		Dwg 6 of 7	
Approved: Service Director		Approved: Division Chief		Approved: Division Chief		Approved: Division Chief		Approved: Division Chief	
Date		Date		Date		Date		Date	
Revisions		Revisions		Revisions		Revisions		Revisions	