

three inches = one foot
one and one-half inch = one foot
one inch = one foot
one-half inch = one foot
three-quarters inch = one foot
one-half inch = one foot
three-eighths inch = one foot
one-quarter inch = one foot
one-eighth inch = one foot

GENERAL NOTES:

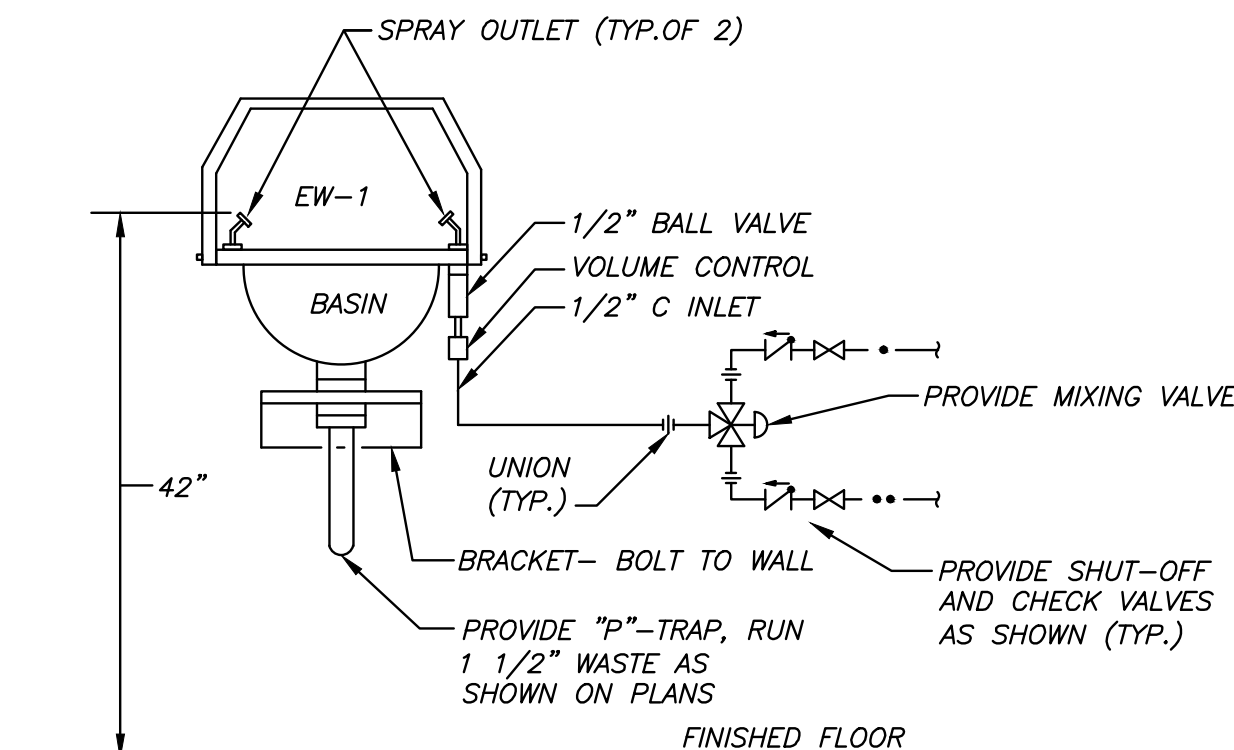
1. THE PLUMBING SYSTEM DESIGN, INSTALLATION AND MATERIALS SHALL CONFORM TO THE VA STANDARDS AND AUTHORITIES HAVING JURISDICTION. IN CASE OF CONFLICTS WITH CODES, DRAWINGS, OR SPECIFICATIONS, THE MOST STRINGENT SHALL PREVAIL.
2. BEFORE COMMENCEMENT OF WORK, THE CONTRACTOR SHALL VERIFY THE EXACT LOCATIONS, ELEVATIONS AND CHARACTERISTICS OF ALL UTILITIES AND PIPING, AND SHALL IMMEDIATELY NOTIFY THE COTR OF ANY DISCREPANCIES.
3. THE DRAWINGS WERE PREPARED WITH THE BEST STRUCTURAL AND ARCHITECTURAL INFORMATION AVAILABLE. IT IS UNDERSTOOD THAT EQUIPMENT LOCATIONS AND ROUTING OF PIPING MAY VARY FROM THAT SHOWN ON THE PLANS AS CONSTRUCTION PROCEEDS. IT IS THE CONTRACTOR'S RESPONSIBILITY TO:
- a. NOTIFY THE COTR OF CONSTRUCTION RESTRAINTS WHICH MAKE VARIATIONS FROM THE PLANS NECESSARY.
- b. COMPLETE ALL WORK INCLUDING THE VARIATIONS WITHOUT CHARGING EXTRAS TO THE BID CONTRACT. COMPLETION OF WORK MEANS THE JOB IS WORKING AND MEETS ALL VA STANDARD REQUIREMENTS.
4. THESE DRAWINGS DO NOT INCLUDE ALL NECESSARY SAFETY REQUIREMENTS, CONTRACTOR TO COMPLY TO THE SAFETY REQUIREMENTS SET FORTH BY THE LOCAL AUTHORITIES HAVING JURISDICTION.
5. THESE DRAWINGS ARE FOR BIDDING PURPOSES ONLY. THEY ARE ESSENTIALLY DIAGRAMMATIC TO THE EXTENT THAT MANY OFFSETS, BENDS, UNIONS, SPECIFIC FITTINGS AND EXACT LOCATIONS ARE NOT INDICATED.
6. ALL PLUMBING WORK SHALL BE INSTALLED SO AS TO AVOID INTERFERENCE WITH ELECTRICAL EQUIPMENT, MECHANICAL EQUIPMENT AND STRUCTURAL FRAMING, SKYLIGHTS, ETC.
7. THE CONTRACTOR SHALL COORDINATE THE LOCATION OF ALL CEILING ACCESS PANELS WITH THE ARCHITECTURAL REFLECTED CEILING PLAN AND ELECTRICAL LIGHTING PLAN.
8. COORDINATE ALL LOCATIONS, SIZES AND ELEVATIONS OF ALL SLEEVES THROUGH WALLS, BEAMS, SLABS AND FOOTING WITH STRUCTURAL AND ARCHITECTURAL DRAWINGS. ALL PIPES SLEEVING THROUGH BEAMS OR FOOTINGS SHALL HAVE A SLEEVE DIAMETER OF TWO PIPE SIZES OVER THE PIPE PASSING THROUGH THE FOOTING OR PER STRUCTURAL DRAWING. THE MOST STRINGENT SHALL PREVAIL.
9. IF REQUIRED, PROVIDE SHUT DOWNS AND TIE-INS ON OFF-HOURS TO AVOID DISRUPTION OF BUILDING SYSTEMS. COORDINATE ALL SHUT DOWN REQUIREMENTS PRIOR TO SUBMITTING BID (INCLUDE ALL WORK REQUIRED DURING OFF HOURS IN BID).
10. BEFORE FABRICATION OR INSTALLATION, THE CONTRACTOR SHALL VERIFY EXACT LOCATIONS OF ALL MECHANICAL EQUIPMENT AND EQUIPMENT PROVIDED UNDER ANOTHER SECTION OF SPECIFICATIONS. EXACT ROUGH-IN LOCATIONS AND REQUIREMENTS SHALL BE COORDINATED IN FIELD.
11. PIPING SUPPORTS. ALL PIPING TO BE SUPPORTED WITH HANGERS AND BRACKETS WHICH PROVIDE ISOLATION FROM FRAMING. CONTACT BETWEEN PIPE AND SUPPORT TO BE LINED WITH PLASTIC OR FELT.
12. ALL FLOOR AND WALL PENETRATIONS MUST BE SEALED WATERTIGHT AND VERMIN PROOF.
13. EXACT LOCATIONS AND MOUNTING HEIGHTS OF PLUMBING FIXTURES SHALL BE OBTAINED FROM THE ARCHITECTURAL DRAWINGS.
14. SEE ARCHITECTURAL DRAWINGS FOR HANDICAP FIXTURE LOCATIONS AND MOUNTING HEIGHTS. INSULATE ALL EXPOSED HOT WATER AND DRAIN PIPING BELOW HANDICAP LAVATORIES AND SINKS WITH INSULATING WRAP AND OFFSET P-TRAP AGAINST WALL. ALL FLUSH VALVES FOR HANDICAP SHALL BE LOCATED ON HANDICAP WHEELCHAIR ACCESS SIDE OF STALL.
15. ALL CLEANOUTS SHALL BE INSTALLED WHERE READILY ACCESSIBLE. THE CONTRACTOR SHALL COORDINATE ALL CLEANOUT LOCATIONS OF EQUIPMENT, CABINETS, ETC., WITH THE ARCHITECT PRIOR TO ANY INSTALLATION.
16. ALL VALVES, TRAP PRIMERS, WATER HAMMER ARRESTORS OR OTHER EQUIPMENT SHOWN IN WATER OR ABOVE NON-ACCESSIBLE CEILINGS SHALL BE INSTALLED BEHIND AN ACCESS PANEL. COORDINATE LOCATION AND SIZE WITH ARCHITECT.
17. PLUMBING CONTRACTOR SHALL VISIT THE JOB SITE PRIOR TO SUBMITTING BID. HE SHALL FAMILIARIZE HIMSELF WITH ALL EXISTING CONDITIONS AND FUTURE WORK TO BE DONE. HE SHALL INCLUDE ALL HIS SITE INFORMATION AND CONDITIONS WITH HIS BASE BID. HE SHALL BE RESPONSIBLE FOR COMPLETE AND FULLY FUNCTIONING PLUMBING SYSTEMS.
18. PLUMBING CONTRACTOR SHALL COORDINATE COMPLETE PLUMBING INSTALLATION AND REQUIREMENTS PRIOR TO SUBMITTING BID WITH ALL LOCAL DISTRICTS AND GOVERNING AUTHORITIES. INCLUDE ALL FINDINGS WITHIN THE BASE BID.
19. DO NOT SHUT DOWN ANY FIRE PROTECTION OR RELATED SYSTEM WITHOUT BUILDING OWNER'S PRIOR WRITTEN APPROVAL. FOLLOW ALL OWNER REQUIREMENTS AND SHUT DOWN PROCEDURES AS WELL AS ALL REQUIREMENTS OF THIS PROJECT'S CONTRACT DOCUMENTS (PLANS AND SPECIFICATIONS).
20. PLUMBING CONTRACTOR SHALL BE RESPONSIBLE FOR ALL ROOF WORK THAT IS REQUIRED AS PART OF THIS CONTRACT. ALL ROOF WORK SHALL BE PERFORMED SUCH THAT ALL EXISTING ROOF WARRANTIES ARE MAINTAINED.
21. PROVIDE ALL WORK IN COMPLIANCE WITH ALL LOCAL, STATE AND FEDERAL CODES. OBTAIN ALL REQUIRED PERMITS. COORDINATE ALL WORK WITH LOCAL FIRE MARSHAL.
22. FIELD VERIFY EXACT LOCATION, COMPOSITION AND CONDITION OF ALL PIPING, VALVES AND SYSTEMS AS REQUIRED FOR WORK OF THE CONTRACT.
23. PROVIDE CUTTING, CORING AND PATCHING OF ALL WALLS, SLABS AND DECKS AS REQUIRED FOR WORK SHOWN. COORDINATE ALL WORK WITH OWNER AND GENERAL CONTRACTOR.
24. PROVIDE ALL REQUIRED EXCAVATION, BACKFILL AND COMPACTION FOR ALL UNDERGROUND WORK.
25. REFER TO ARCHITECTURAL DRAWINGS AND THE PROJECT SPECIFICATIONS FOR PROJECT PHASING REQUIREMENTS.
26. PROVIDE FULL SPRINKLER COVERAGE FOR ALL SPACES WITHIN THE PROJECT AREA IN COMPLIANCE WITH LOCAL, STATE AND FEDERAL CODES, NFPA-13 AND OWNER'S INSURANCE CARRIER/UNDERWRITER.
27. PROVIDE SPRINKLER SHOP DRAWINGS AND HYDRAULIC CALCULATIONS WITH ALL INFORMATION NOTED BY NFPA-13. DO NOT START ANY WORK UNTIL DRAWINGS AND CALCULATIONS HAVE BEEN APPROVED BY THE PROJECT ENGINEER, OWNER'S AGENTS AND COTR. OBTAIN WATER FLOW TEST DATA (PRESSURES AND FLOWS) AS REQUIRED. PROVIDE ALL FLOW TESTS REQUIRED IF CURRENT TEST DATA IS UNAVAILABLE.
28. COORDINATE SPRINKLER SYSTEM WITH ALL OTHER TRADES, BUILDING CONDITIONS, ETC. OFFSET SPRINKLER SYSTEM PIPING AS REQUIRED (PROVIDE ALL FITTINGS, CONNECTIONS, ETC.)
29. FOR ALL AREAS WITH LAY-IN CEILINGS, PROVIDE SPRINKLERS IN THE CENTER OF CEILING TILES (2x2 PATTERN). REFER TO ARCHITECTURAL PLAN FOR CEILING GRID LAYOUT.
30. THE SPRINKLER/FIRE PROTECTION CONTRACTOR SHALL HYDRAULICALLY CALCULATE ALL SPRINKLER SYSTEMS SHOWN ON THE DRAWING AND SHALL SIZE PIPING ACCORDINGLY.
31. DEMOLITION SHALL INCLUDE REMOVAL OF PIPING, HANGERS, RODS, INSULATION, SUPPORTS, FIXTURES, CARRIERS, TRIM, VALVES AND RELATED WORK. DEMOLITION SHALL INCLUDE LEGAL DISPOSAL OF ALL ITEMS REMOVED.
32. REMOVE AND REPLACE EXISTING CEILINGS AS REQUIRED FOR WORK SHOWN. REPLACE ALL DAMAGED CEILINGS. PROVIDE NEW CEILINGS. FIELD VERIFY CEILING TYPES AND EXTENT OF THIS WORK PRIOR TO BID DATE AND INCLUDE IT IN THE BID.
33. FIELD VERIFY ALL UNDERGROUND VALVES AND PIPING AS REQUIRED FOR WORK SHOWN.
34. COORDINATE ALL VENT TERMINATIONS ABOVE ROOF WITH HVAC CONTRACTOR. ALL VENT TERMINATIONS ABOVE ROOF SHALL BE A MINIMUM 25'-0" AWAY FROM ANY HVAC OUTSIDE AIR INTAKE (ROOFTOP UNIT, LOUVER, ETC.).
35. CONNECT TO SITE PIPING OUTSIDE BUILDING AS SHOWN. PROVIDE ALL REQUIRED OFFSETS, FITTINGS AND CONNECTIONS. FIELD VERIFY EXACT LOCATION, DEPTH AND COMPOSITION OF SITE SERVICES AND COORDINATE ALL WORK WITH SITE CONTRACTOR.
36. PROVIDE SCHEDULE 40 BLACK STEEL PIPE SLEEVES FOR ALL UNDERGROUND PIPING PASSING THROUGH OR UNDER FOOTINGS, WALLS, FOUNDATION WALLS, SLABS FLOORS AND/OR UNDERGROUND STRUCTURES. REFER TO THE PROJECT SPECIFICATIONS FOR ADDITIONAL REQUIREMENTS.

37. WHERE PIPING IS LOCATED OVER FOOTINGS AND/OR OTHER UNDERGROUND STRUCTURES, ROLL DOWN AS REQUIRED TO CONNECT TO SYSTEMS NOTED. PROVIDE ALL REQUIRED OFFSETS, FITTINGS AND CONNECTIONS.
38. PITCH ALL SANITARY, WASTE AND STORM PIPING AS FOLLOWS: PIPING 2 1/2" AND SMALLER, PITCH AT 2 PERCENT (1/4" PER FOOT) MINIMUM, PIPING 4" AND LARGER, PITCH AT 1 PERCENT (1/8" PER FOOT) MINIMUM.
39. WATER OR WASTE PIPE BELOW GRADE OUTSIDE THE BUILDING SHALL HAVE MINIMUM COVER AS RECOMMENDED BY LOCAL AUTHORITIES.
40. SUBMITTALS AND SHOP DRAWINGS: AS SOON AS POSSIBLE AND WITHIN 21 DAYS AFTER AWARD OF THE CONTRACT, AND BEFORE THEIR PURCHASE, THE CONTRACTOR SHALL SUBMIT TO THE ARCHITECT 6 BOUND BOOKLETS FOR APPROVAL AND CONTAINING A COMPLETE LIST OF MATERIALS, SPECIALTIES AND EQUIPMENT HE IS TO FURNISH FOR THE INSTALLATION. ALL SUBMITTALS SHALL BE MADE AT ONE TIME. NO DEVIATION OF PLUMBING FIXTURES WILL BE ACCEPTED. BASED ON APPROVAL OF ALTERNATE PRIOR TO BID.
41. COORDINATE PLUMBING SYSTEMS WITH WORK OF ALL OTHER TRADES PRIOR TO ANY FABRICATION OR INSTALLATION.
42. COORDINATE LOCATIONS OF ALL ROOF OPENINGS WITH STRUCTURAL, MECHANICAL, AND ARCHITECTURAL PLANS PRIOR TO ANY INSTALLATION.
43. PLATFORMS, CURBS, AND FLUSHINGS FOR PLUMBING EQUIPMENT SHALL BE AS INDICATED ON THE STRUCTURAL AND ARCHITECTURAL PLANS, UNLESS NOTED OTHERWISE, COORDINATE EXACT SIZES OF REQUIRED OPENINGS AND SUPPORTS FOR FURNISHED EQUIPMENT.
44. ALL EQUIPMENT SHALL BE INSTALLED IN STRICT ACCORDANCE WITH THE EQUIPMENT MANUFACTURER'S RECOMMENDATIONS AND APPLICABLE CODES; PROVIDE ALL FITTINGS, VALVES, AND OTHER DEVICES REQUIRED FOR A COMPLETE WORKABLE INSTALLATION.
45. MAINTENANCE LABEL SHALL BE AFFIXED TO ALL PLUMBING EQUIPMENT AND A MAINTENANCE MANUAL SHALL BE PROVIDED TO OWNER'S REPRESENTATIVE.
46. ALL HOSE BIBBS, WALL HYDRANTS AND MOP SERVICE BASINS SHALL BE EQUIPPED WITH APPROVED, PROPERLY INSTALLED ATMOSPHERIC TYPE VACUUM BREAKERS.
47. COORDINATE WITH ELECTRICAL TRADE PRIOR TO ORDERING ELECTRICALLY OPERATED EQUIPMENT FOR AVAILABLE VOLTAGES AT EQUIPMENT LOCATIONS.
48. PIPE SIZE DISCREPANCIES BETWEEN FLOOR PLANS AND RISER DIAGRAMS LARGER PIPE SIZE INDICATED WILL TAKE PRECEDENCE.
49. THESE PLANS INDICATE APPROXIMATE ROUGH-INS ONLY FOR EQUIPMENT NOT IN THIS SECTION (N.I.T.S.). EXACT ROUGH-IN DIMENSIONS MUST BE OBTAINED FROM THE EQUIPMENT MANUFACTURER.
50. PROVIDE SHUT-OFF VALVES (BALL VALVE) FOR EACH C, H, HWR AND GAS RISER TO UNITS AND BRANCH TO PUBLIC AREAS OR FIXTURES.
51. ALL VALVES, UNIONS, ETC. TO BE SAME SIZE AS PIPE UNLESS OTHERWISE INDICATED ON DRAWINGS.
52. UNIONS SHALL BE PROVIDED AND INSTALLED AFTER EACH SCREW-TYPE VALVE AND PRIOR TO EQUIPMENT CONNECTIONS.
53. THE PLUMBING CONTRACTOR SHALL COORDINATE ALL REQUIREMENTS FOR ALL POINTS OF CONNECTION WITH THE GENERAL CONTRACTOR AND OTHER TRADES PRIOR TO BID.
54. FIRE PROTECTION CONTRACTOR SHALL LAYOUT SPRINKLER SYSTEM, COORDINATE WITH ALL OTHER TRADES, AND SHALL PROVIDE SPRINKLER SHOP DRAWINGS AND HYDRAULIC CALCULATIONS. SPRINKLER PIPING SHALL BE SIZED HYDRAULICALLY.
55. CONTRACTOR SHALL PROVIDE ALL VALVES AND BACKFLOW PREVENTION DEVICES AS REQUIRED BY STATE AND LOCAL CODES.
56. INSTALL PIPING SO THAT ALL VALVES, STRAINERS, UNIONS, TRAPS, FLANGES AND OTHER APPURTENANCES REQUIRING ACCESS ARE ACCESSIBLE.
57. INSTALL PIPING WITHOUT FORCING OR STRINGING.
58. DRAINS SHALL BE INSTALLED AT THE LOW POINT OF THE FLOORS, UNLESS OTHERWISE NOTED.
59. OFFSETS IN PIPING AROUND OBSTRUCTIONS SHALL BE PROVIDED AT NO ADDITIONAL COST TO THE OWNER.

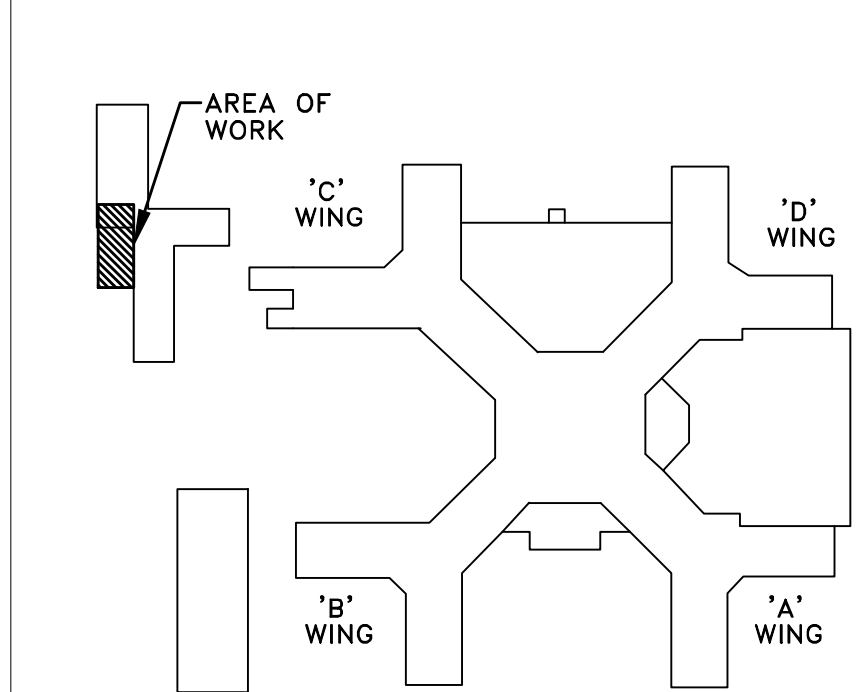
ABBREVIATIONS:

- A AIR
AFF ABOVE FINISHED FLOOR
AV ACID VENT
AW ACID WASTE
C COLD WATER
CO CLEANOUT
CP CONDENSATE PUMP
CPCP CHLORINATED POLYVINYL CHLORIDE
DBP DOMESTIC BOOSTER PUMP
DCDA DOUBLE CHECK DETECTOR ASSEMBLY
DET DOMESTIC EXPANSION TANK
DF DRINKING FOUNTAIN
DI DIAMETER
DN DOWN
DPCO DECK PLATE CLEANOUT
DW DEIONIZED WATER
ESP ELEVATOR SUMP PUMP
ESS EMERGENCY SHOWER SYSTEM
ETR EXISTING TO REMAIN
EW EYEWASH
EWC ELECTRIC WATER COOLER
FD FLOOR DRAIN
FDC FIRE DEPARTMENT CONNECTION
FDC FUEL OIL FILL
FOG FUEL OIL GAUGE
FOR FUEL OIL RETURN
FOS FUEL OIL SUPPLY
FOV FUEL OIL VENT
FP FIRE PROTECTION
FPC FIRE PROTECTION CONTRACTOR
FS FLOOR SINK
FS FLOW SWITCH
FT FEET
G GAS (NATURAL)
GPH GALLONS PER HOUR
GPM GALLONS PER MINUTE
H HOT WATER
HB HOSE BIBB
HP HORSE POWER
HWH HOT WATER HEATER
HW HOT WATER RECIRCULATION
IN INCHES
INV INVERT
IW INDIRECT WASTE
LAV LAVATOR
LAV LPG LIQUEFIED PETROLEUM GAS
LS LAUNDRY SINK
LS MAX MAXIMUM
MIN MINIMUM
MSS MOP SERVICE SINK
MV MIXING VALVE
N2 NITROGEN
NC NORMALLY CLOSED
NIC NOT IN CONTRACT
NO NORMALLY OPEN
NTS NOT TO SCALE
O OXYGEN
CO CLEANOUT
PC PLUMBING CONTRACTOR
PCP PLUMBING CIRCULATION PUMP
PD PUMP DISCHARGE
PS PRESSURE SWITCH
PSI POUNDS PER SQUARE INCH
PVC POLYVINYL CHLORIDE
PW PURE WATER
RD ROOF DRAIN
RPDA REDUCED PRESSURE DETECTOR ASSEMBLY
RPM REVOLUTIONS PER MINUTE
RPZ REDUCED PRESSURE ZONE
SA SHOCK ABSORBER
SAN SANITARY
SE SEWAGE EJECTOR
SF SQUARE FOOT
SHR SHOWER
SINK SINK
SP SUMP PUMP
ST STORM WATER
TD TRENCH DRAIN
TS TAMPER SWITCH
TUB TUB
TYP TYPICAL
UP UP
URINAL URINAL
V VOLTS
VAC VACUUM
VTR VENT THROUGH ROOF
W WASTE
WC WATER CLOSET
WH WALL HYDRANT
WPCO WALL PLATE CLEANOUT

PLUMBING & FIRE PROTECTION SYMBOLS LIST			
SYMBOL	DESCRIPTION	SYMBOL	DESCRIPTION
-X-X-	EXISTING PIPING	→	CAP OR PLUG
⊗	NEW TO EXISTING CONNECTION	⊗	WALL HYDRANT
⊗	REMOVE TO THIS POINT	⊗	HOSE BIBB
#####	WORK TO BE REMOVED	⊗	THERMOMETER
—•—	COLD WATER PIPING (C)	⊗	PRESSURE GAGE
—••—	HOT WATER PIPING (H)	SA	SHOCK ABSORBER (SA)
—•••—	HW RECIRCULATION PIPING (HWR)	⊗	STRAINER
— --	VENT PIPING (V)	⊗	PUMP
→	STORM PIPING (ST)	⊗	BACKFLOW PREVENTER
—	SANITARY/WASTE (SAN/W)	⊗	METER
—IW—	INDIRECT WASTE (IW)	⊗	FLOOR DRAIN (FD)
—G—	NATURAL GAS PIPING (G)	⊗	ROOF DRAIN (RD)
—S—	SOFTENED WATER (S)	⊗	PENDENT SPRINKLER HEAD
—FP—	FIRE PROTECTION MAIN	⊗	SEMI-RECESSED SPRINKLER HEAD
—W—	WATER MAIN (EXTERIOR)	⊗	UPRIGHT SPRINKLER HEAD
—A—	COMPRESSED AIR PIPING	⊗	CONCEALED SPRINKLER HEAD
—⊗—	DROP CONNECTION	⊗	SIDEWALL SPRINKLER HEAD
⊗	ELBOW UP, ELBOW DOWN	⊗	DRY PIPE VALVE
⊗	P-TRAP	⊗	ALARM CHECK VALVE
⊗	CLEANOUT (CO)	⊗	FIRE HYDRANT
⊗	UNION	WPCD	WALL PLATE CLEANOUT
⊗	SHUT OFF VALVE	DPCD	DECK PLATE CLEANOUT
⊗	CHECK VALVE	TYP	TYPICAL
⊗	BALANCE VALVE	N.C.	NORMALLY CLOSED
⊗	ANGLE VALVE	N.O.	NORMALLY OPEN
⊗	PRESS. OR TEMP. RELIEF VALVE	FS	FLOOR SINK
⊗	REGULATING VALVE	AFF	ABOVE FINISHED FLOOR
⊗	BUTTERFLY VALVE	ETR	EXISTING TO REMAIN
⊗	PRESSURE REDUCING VALVE	VTR	VENT THROUGH ROOF
⊗	SOLENOID VALVE	PD	PUMP DISCHARGE
⊗	VALVE WITH TAMPER SWITCH	P.C.	PLUMBING CONTRACTOR
⊗	FLOW SWITCH	F.P.C.	FIRE PROTECTION CONTRACTOR
⊗	PIPE CONTINUATION (SINGLE LINE)	FDC	FIRE DEPARTMENT CONNECTION
⊗	PIPE CONTINUATION (DOUBLE LINE)	RPZ	REDUCED PRESSURE ZONE
⊗	BREAK	DCDA	DOUBLE DETECTOR CHECK VALVE
→	DIRECTION OF FLOW	RPDA	REDUCED PRESSURE DETECTOR ASSEMBLY



1 EYEWASH DETAIL
P000 SCALE: NONE



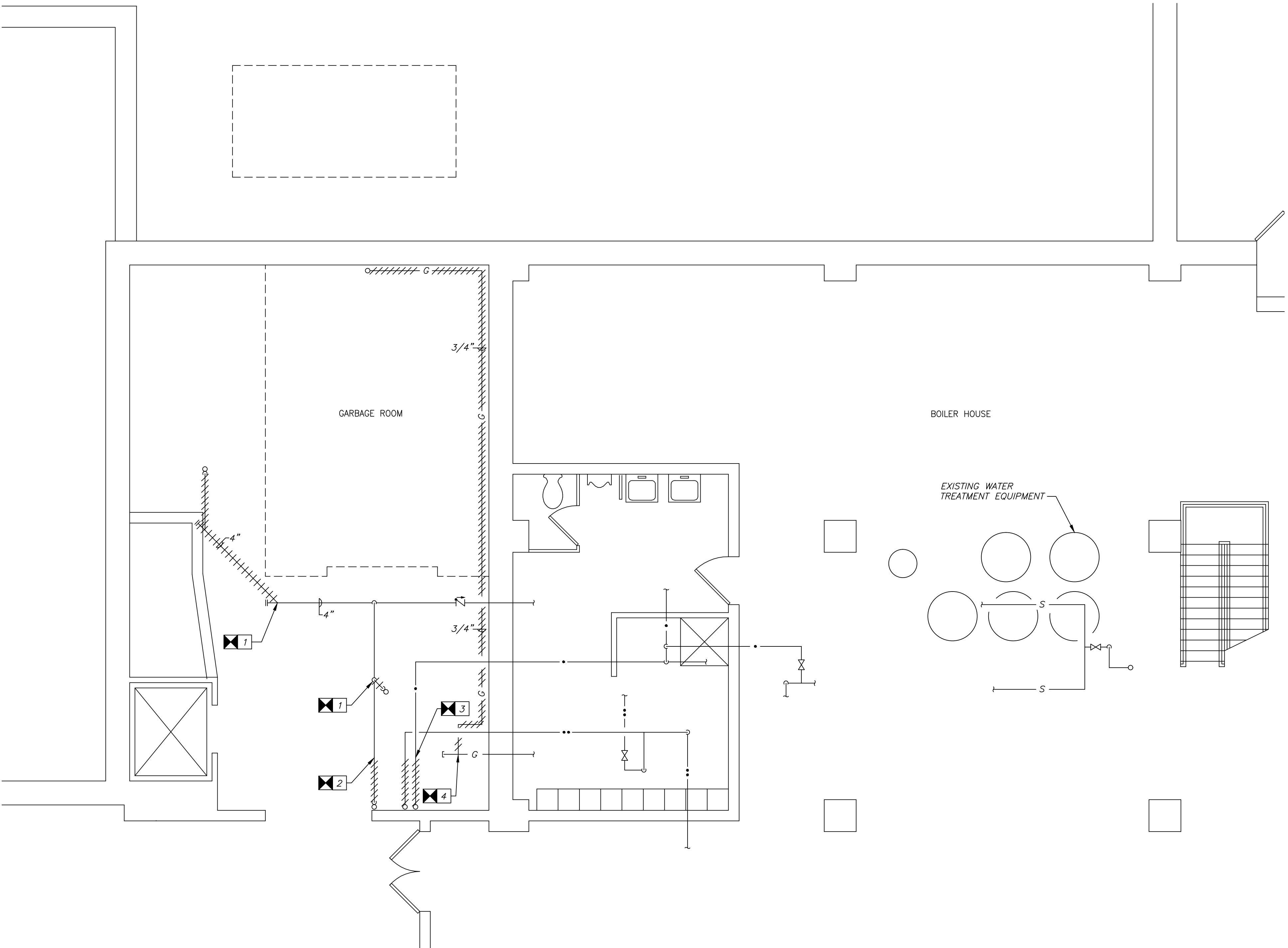
KEY PLAN
SCALE: NONE

<div>VA WESTERN NEW YORK HEALTHCARE SYSTEM 3495 BAILEY AVENUE BUFFALO, NEW YORK 14215</div>		<div>ECABengineering, p.c. 15 Screen Place Suite 300 Pittsford, NY 14534 Phone: (585) 641-7121 Fax: (585) 362-4175 www.ecab.com</div>	<div>Altamura Architectural Consulting 1260 Scottsville Road, Suite 202 Rochester, New York 14624 585-473-0669 fax: 585.271.2679 email: Altamuraa@comcast.net</div>	<div>CARDIOLOGY MANAGER DATE ENGINEERING MANAGER DATE</div>	<div>INFECTION CONTROL DATE CARELINE MANAGER DATE</div>	<div>SAFETY OFFICER DATE CHIEF OF STAFF DATE</div>	<div>Drawing Title GENERAL NOTES, SYMBOLS, DETAIL AND ABBREVIATIONS – PLUMBING/FIRE PROTECTION</div>	<div>Project Title MEDICAL WASTE TRAILER</div>	<div>Date February 15, 2013 Station No. 52B-12-102</div>	<div>Building Number 6 Checked AJW Drawn WAB</div>	<div>Location V.A.M.C. BUFFALO, NEW YORK</div>	<div>09-372-P000</div>	<div>Office of Facilities Department of Veterans Affairs</div>
<div>ISSUED FOR BID Revisions 02-15-13 Date</div>		<div>Consultant stamp Architect / Engineer</div>											

1
2
3
4
5
6
7
8
9

A
B
C
D
E
F

three inches = one foot
one and one-half inch = one foot
one inch = one foot
three-quarters inch = one foot
one-half inch = one foot
three-eighths inch = one foot
one-quarter inch = one foot
one-eighth inch = one foot



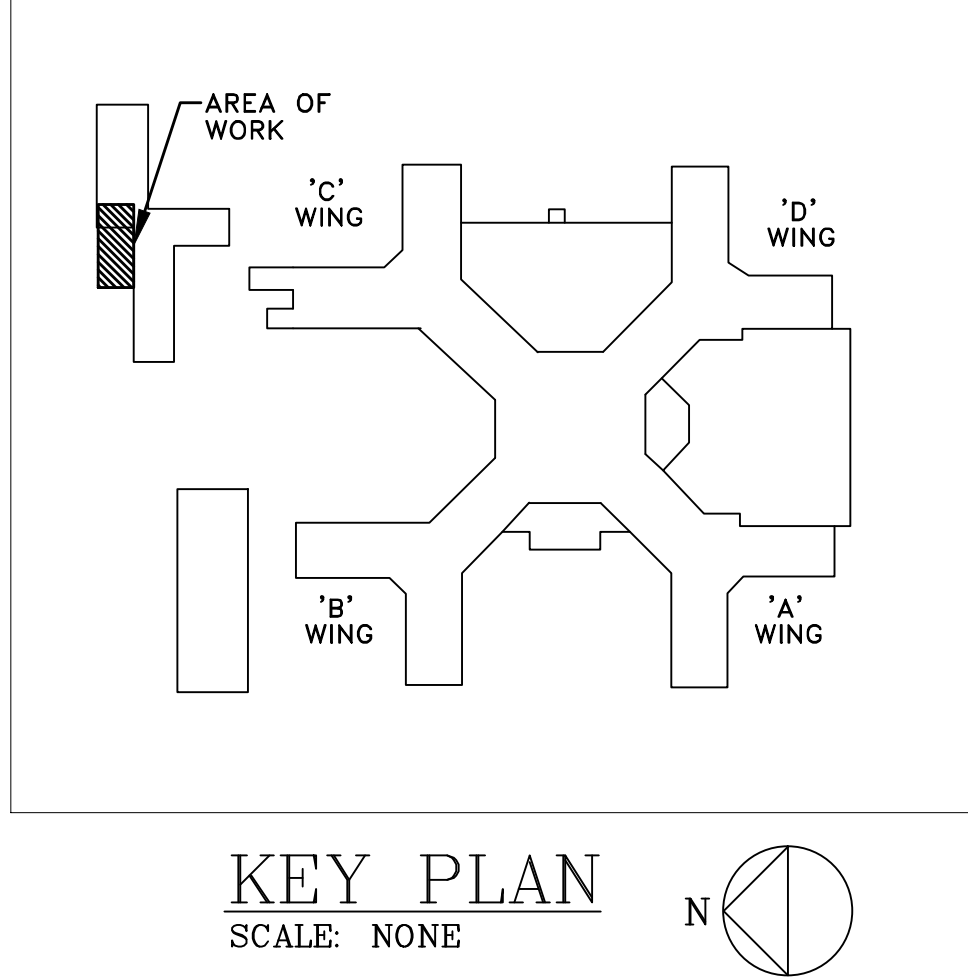
1
P101

SUB-BASEMENT FLOOR PLAN - PLUMBING REMOVALS

SCALE: 1/4" = 1'-0"

N

- REMOVAL NOTES:**
- 1 REMOVE FLOOR DRAIN AND ASSOCIATED WASTE PIPING TO THE POINT INDICATED.
 - 2 REMOVE SERVICE SINK WASTE PIPING TO THE POINT INDICATED.
 - 3 REMOVE DOMESTIC SUPPLY PIPING INDICATED SERVING FIXTURES ABOVE TO THE POINT INDICATED.
 - 4 REMOVE NATURAL GAS SUPPLY SERVING MEDICAL WASTE TRAILER AND CAP WHERE INDICATED.

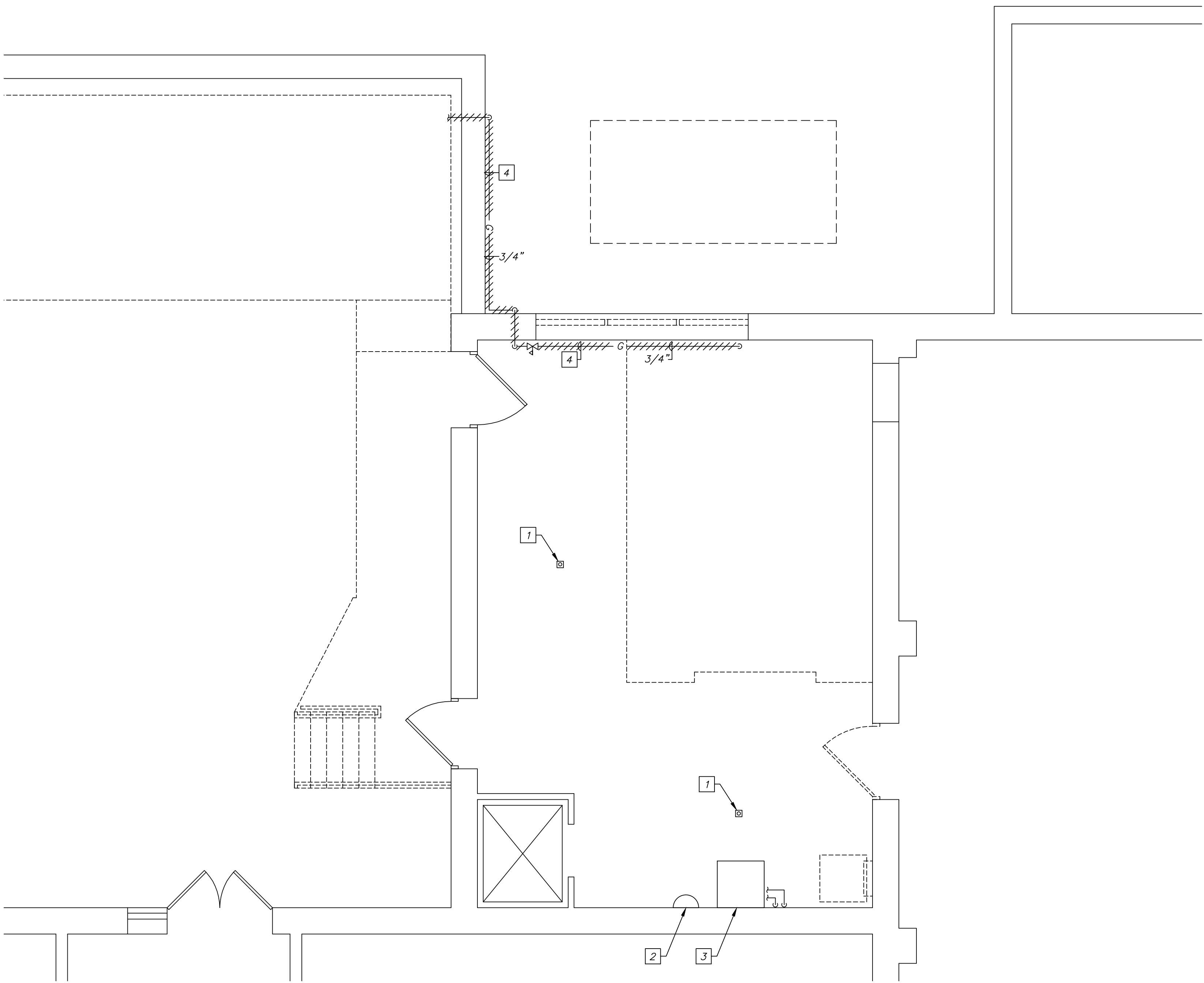


<div>ISSUED FOR BID Revisions</div> <div>02-15-13 Date</div>		<div>VA WESTERN NEW YORK HEALTHCARE SYSTEM 3495 BAILEY AVENUE BUFFALO, NEW YORK 14215</div>	<div>EC4B Engineering, P.C. 15 Schoen Place Suite 300 Pittsford, NY 14534 Phone: (585) 641-7121 Fax: (585) 362-4175 www.ec4b.com</div> <div>Consultant</div>	<div>Altamira Altamira Architectural Consulting 1260 Scottsville Road, Suite 202 Rochester, New York 14624 585-473-0669 fax: 585-271-2679 email: Altamira@frontiernet.net</div> <div>Architect / Engineer</div>	<div>CARDIOLOGY MANAGER INFECTION CONTROL SAFETY OFFICER</div> <div>DATE DATE DATE</div>	<div>ENGINEERING MANAGER CARELINE MANAGER CHIEF OF STAFF</div> <div>DATE DATE DATE</div>	<div>Drawing Title SUB-BASEMENT FLOOR PLAN - PLUMBING REMOVALS</div> <div>Project Title MEDICAL WASTE TRAILER</div> <div>Building Number 6</div> <div>Checked AJW</div> <div>Drawn WAB</div> <div>Location V.A.M.C. BUFFALO, NEW YORK</div>	<div>Date February 15, 2013</div> <div>Station No. 52B-12-102</div> <div>09-372-P101</div>	<div>Office of Facilities</div> <div>Department of Veterans Affairs</div>
--	--	---	---	--	--	--	---	--	---

1
2
3
4
5
6
7
8
9

A
B
C
D
E
F

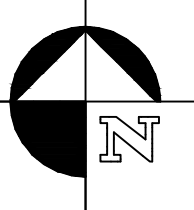
0 1 2 3 4 5 6 7 8 9
A
three inches = one foot
B
one and one-half inch = one foot
C
one inch = one foot
D
three-quarters inch = one foot
E
one-half inch = one foot
F
three-eighths inch = one foot
one-quarter inch = one foot
one-eighth inch = one foot



1
P102

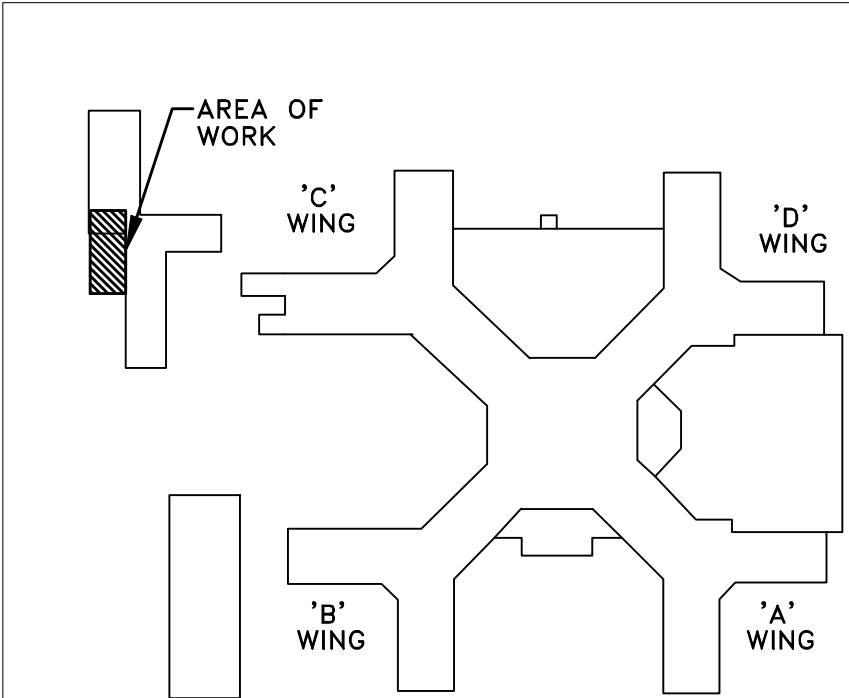
BASEMENT FLOOR PLAN - PLUMBING REMOVALS

SCALE: 1/4" = 1'-0"

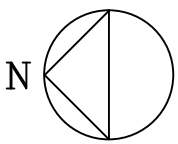


REMOVAL NOTES:

- 1 REMOVE FLOOR DRAIN AND ASSOCIATED WASTE PIPING. PATCH THE SLAB.
- 2 REMOVE EMERGENCY EYEWASH AND ASSOCIATED WASTE AND DOMESTIC SUPPLY PIPING AND CARRIER. PATCH ALL SLAB PENETRATIONS.
- 3 REMOVE UTILITY SINK AND ASSOCIATED WASTE AND DOMESTIC SUPPLY PIPING AND CARRIER. PATCH ALL SLAB PENETRATIONS.
- 4 REMOVE NATURAL GAS PIPING SERVING MEDICAL WASTE TRAILER. PATCH THE WALL PENETRATION.



KEY PLAN
SCALE: NONE



ISSUED FOR BID	02-15-13
Revisions	Date

VA WESTERN NEW YORK HEALTHCARE SYSTEM
3495 BAILEY AVENUE
BUFFALO, NEW YORK 14215

ECAB Engineering, P.C.
15 Schoen Place
Suite 300
Buffalo, NY 14204
Phone: (585) 641-7121
Fax: (585) 362-4175
www.ecab.com

Consultant

stamp

Altamira
Altamira Architectural Consulting
1260 Scottsville Road, Suite 202
Rochester, New York 14624
585-473-0669
fax: 585-271-2679
email: Altamira@frontiernet.net

Architect / Engineer

CARDIOLOGY MANAGER

DATE

ENGINEERING MANAGER

DATE

INFECTION CONTROL

DATE

CARELINE MANAGER

DATE

SAFETY OFFICER

DATE

CHIEF OF STAFF

DATE

Drawing Title

BASEMENT FLOOR PLAN -
PLUMBING REMOVALS

Project Title

MEDICAL WASTE TRAILER

Building Number
6

Checked
AJW

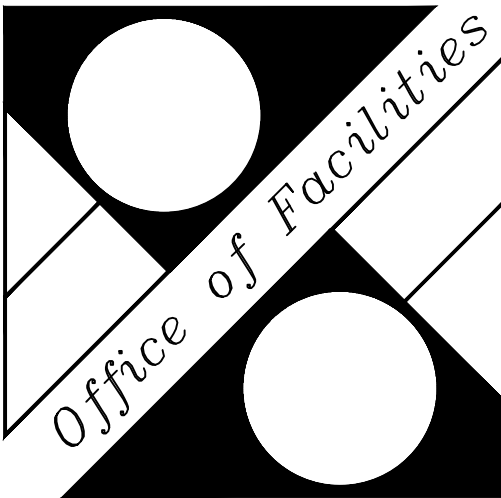
Drawn
WAB

Location
V.A.M.C. BUFFALO, NEW YORK

Date
February 15, 2013

Station No.
528-12-102

09-372-P102



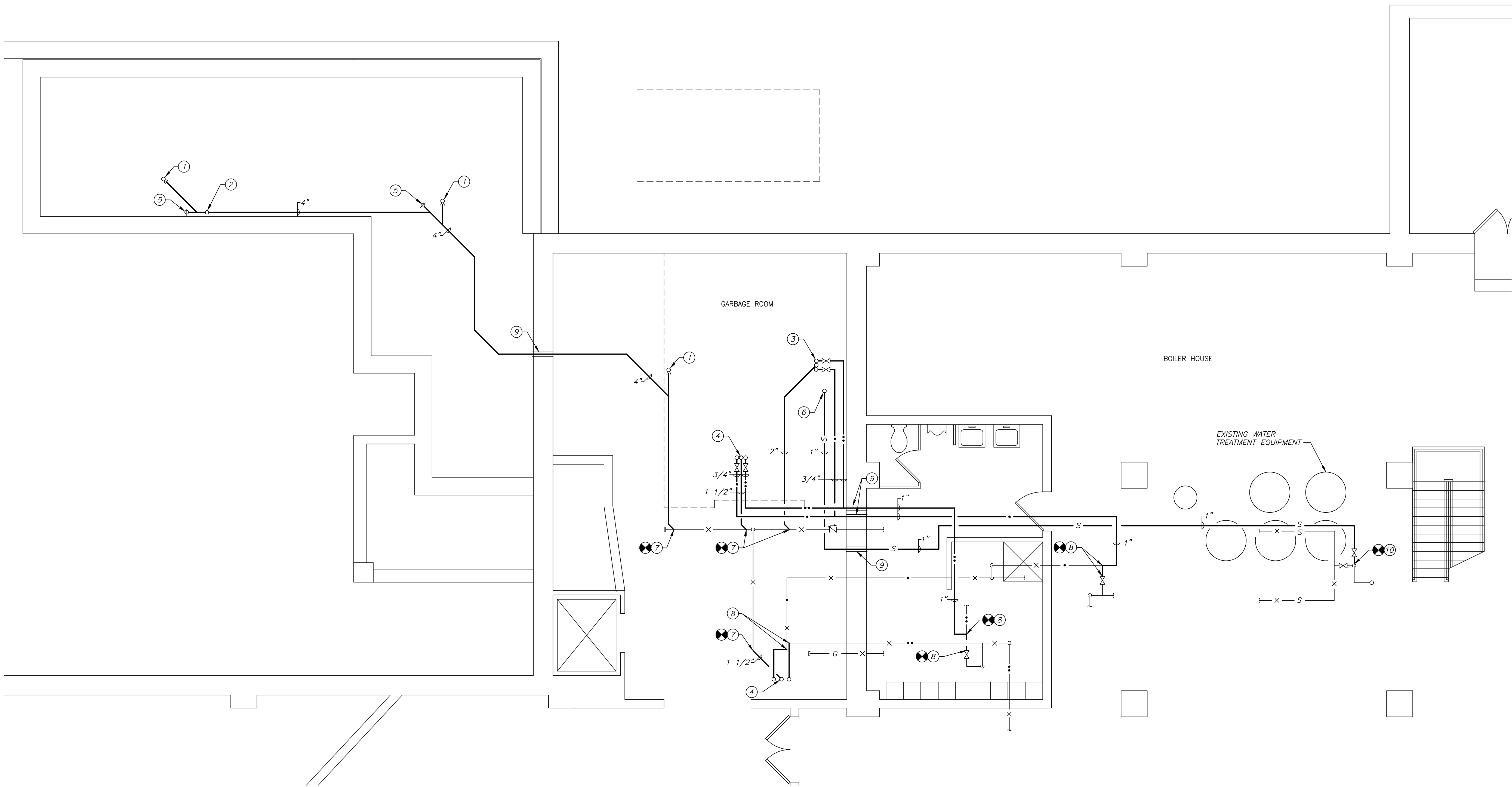


-
- KEY PLAN
- SCALE: NONE
- The key plan shows a central corridor connecting four wings: 'A' WING (top right), 'B' WING (bottom right), 'C' WING (top left), and 'D' WING (bottom left). A north arrow is located in the upper right corner, pointing towards the top right. A small inset in the top left corner shows a detailed view of the 'AREA OF WORK' on the 'C' WING, which is a rectangular area with a diagonal hatching pattern.

[illegible]

one-eighth inch = one foot
one-quarter inch = one foot
three-eighths inch = one foot
one-half inch = one foot
three-quarters inch = one foot
one inch = one foot
one and one-half inch = one foot
three inches = one foot
A
B
C
D
E
F

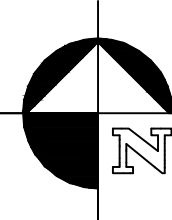
1 2 3 4 5 6 7 8 9



1
P202

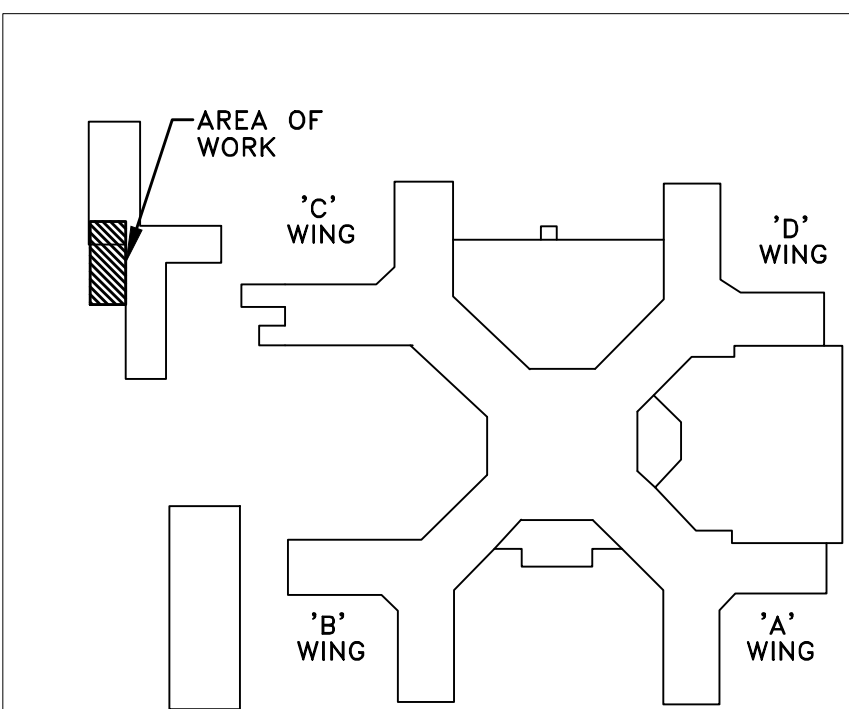
SUB-BASEMENT FLOOR PLAN - PLUMBING NEW WORK- ALTERNATE

SCALE: 1/4" = 1'-0"



DRAWING NOTES:

- ① 4" WASTE UP TO 4" FLOOR DRAIN. COORDINATION LOCATION OF FLOOR DRAIN WITH AUTOCLAVE SUPPLIER TO MINIMIZE INDIRECT WASTE PIPING.
- ② 2" VENT UP.
- ③ 2" WASTE, 3/4" HOT AND COLD UP TO EMERGENCY EYEWASH.
- ④ 1 1/2" WASTE, 3/4" HOT AND COLD UP TO SINK.
- ⑤ UP TO DECK PLATE CLEANOUT.
- ⑥ 1" SOFTENED WATER UP TO CEILING SPACE ABOVE.
- ⑦ TIE INTO EXISTING WASTE LINE. MODIFY PIPING AS REQUIRED TO MAKE TIE-IN.
- ⑧ TIE INTO EXISTING DOMESTIC WATER PIPING WHERE INDICATED. MODIFY PIPING AS REQUIRED TO MAKE TIE-IN.
- ⑨ CORE DRILL EXISTING WALLS AS REQUIRED FOR NEW PIPING. SEAL PER THE SPECIFICATION.
- ⑩ TIE INTO EXISTING SOFTENED WATER PIPING WHERE INDICATED. MODIFY PIPING AS REQUIRED TO MAKE TIE-IN.



KEY PLAN
SCALE: NONE



ISSUED FOR BID	02-15-13
Revisions	Date

VA WESTERN NEW YORK HEALTHCARE SYSTEM
3495 BAILEY AVENUE
BUFFALO, NEW YORK 14215

EC4B
Engineering, P.C.
15 Schoen Place
Suite 300
Pittsford, NY 14534
Phone: (585) 641-7121
Fax: (585) 362-4175
www.ec4b.com

Consultant

stamp

Altamira
Altamira Architectural Consulting
1260 Scottsville Road, Suite 202
Rochester, New York 14624
585-473-0669
fax: 585-271-2679
email: Altamira@frontiernet.net

Architect / Engineer

CARDIOLOGY MANAGER

DATE

ENGINEERING MANAGER

DATE

INFECTION CONTROL

DATE

CARELINE MANAGER

DATE

SAFETY OFFICER

DATE

CHIEF OF STAFF

DATE

Drawing Title

SUB-BASEMENT FLOOR PLAN -
PLUMBING NEW WORK -
ALTERNATE

Project Title

MEDICAL WASTE TRAILER

Building Number
6

Checked
AJW

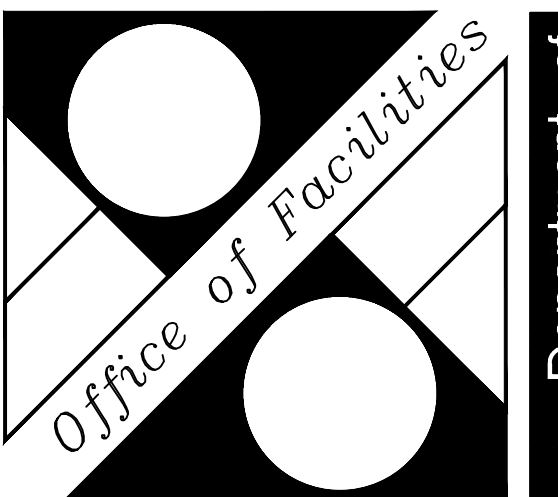
Drawn
WAB

Location
V.A.M.C. BUFFALO, NEW YORK

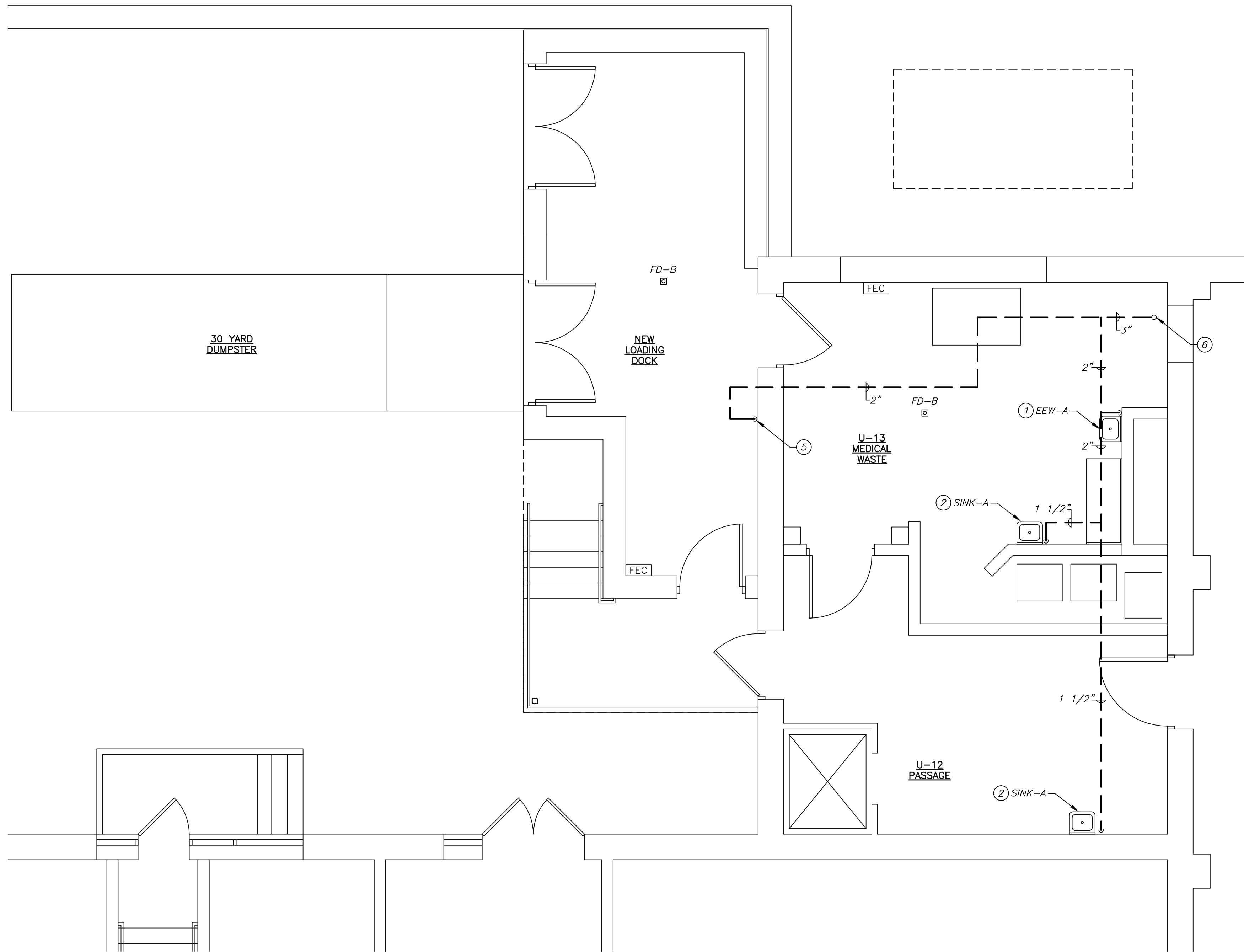
Date
February 15, 2013

Station No.
52B-12-102

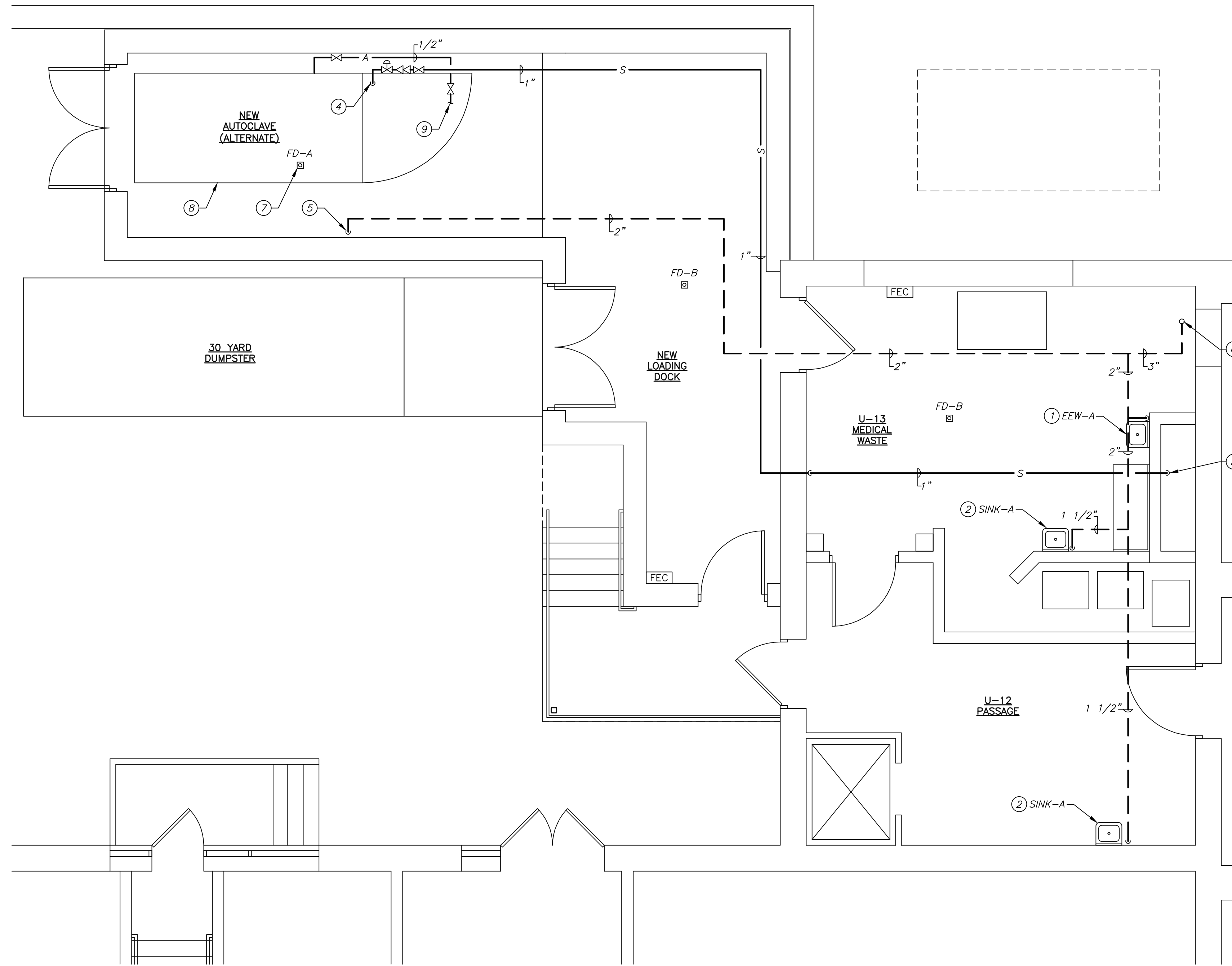
09-372-P202



one-eighth inch = one foot
one-quarter inch = one foot
three-eighths inch = one foot
one-half inch = one foot
three-quarters inch = one foot
one inch = one foot
one and one-half inch = one foot
three inches = one foot
A
B
C
D
E
F



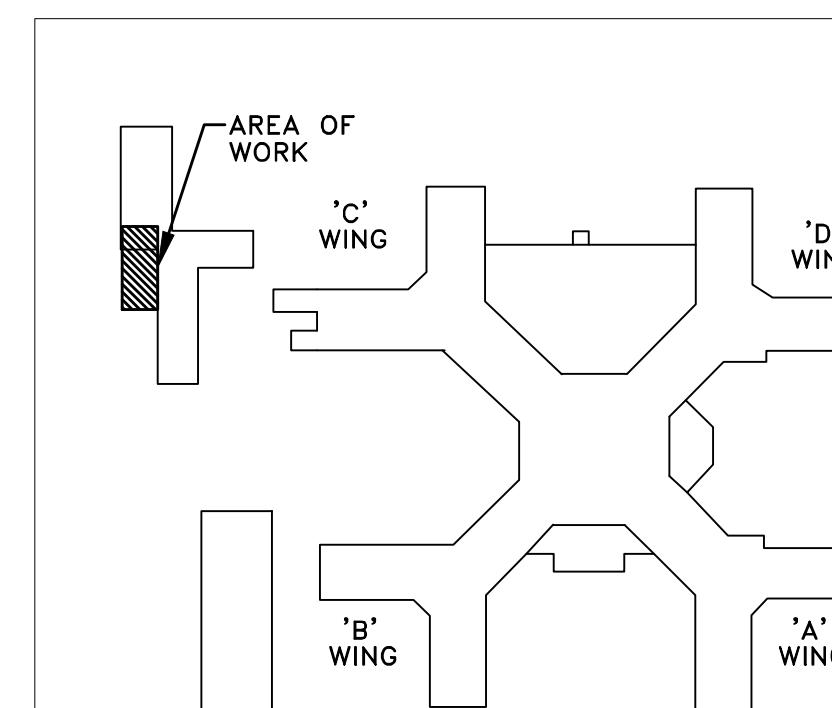
1
P203
BASEMENT FLOOR PLAN - PLUMBING
NEW WORK - BASE BID
SCALE: 1/4" = 1'-0"



2
P203
BASEMENT FLOOR PLAN - PLUMBING
NEW WORK - ALTERNATE
SCALE: 1/4" = 1'-0"

DRAWING NOTES:

- 3/4" HOT AND COLD, 1 1/2" WASTE TO SERVE EMERGENCY EYEWASH. PROVIDE MIXING VALVE PER THE SPECIFICATIONS AND DETAIL ON DRAWING P000.
- 1 1/2" WASTE AND VENT, 3/4" HOT AND COLD TO SERVE SINK.
- 1" SOFTENED WATER FROM SUB-BASEMENT.
- 1" SOFTENED WATER DOWN TO SERVE AUTOCLAVE, WITH SHUT-OFF VALVE, RPZ BFP, AND PRESSURE REDUCING VALVE. COORDINATE LOCATION WITH AUTOCLAVE SUPPLIER.
- 2" VENT FROM BELOW.
- 3" VENT UP TO 4" VENT THROUGH ROOF.
- COORDINATE LOCATION OF FLOOR DRAIN WITH AUTOCLAVE SUPPLIER TO MINIMIZE INDIRECT WASTE PIPING.
- PROVIDE ALL 1/2" SOFTENED WATER AND 2" INDIRECT WASTE PIPING REQUIRED TO SERVE AUTOCLAVE.
- PROVIDE COMPRESSED AIR PIPING FROM AUTOCLAVE AIR COMPRESSOR TO SCISSOR LIFT. COORDINATE WITH SUPPLIERS AND PROVIDE ALL RECOMMENDED VALVING AND DEVICES.



KEY PLAN
SCALE: NONE

ISSUED FOR BID	02-15-13
Revisions	Date

VA WESTERN NEW YORK HEALTHCARE SYSTEM
3495 BAILEY AVENUE
BUFFALO, NEW YORK 14215

EC4B
Engineering, P.C.
15 Schoen Place
Suite 300
Pittsford, NY 14534
Phone: (585) 641-7121
Fax: (585) 362-4175
www.ec4b.com

Consultant

stamp

Altamira
Altamira Architectural Consulting
1260 Scottsville Road, Suite 202
Rochester, New York 14624
585-473-0669
fax: 585.271.2679
email: Altamira@frontiernet.net

Architect / Engineer

CARDIOLOGY MANAGER

DATE

ENGINEERING MANAGER

DATE

INFECTION CONTROL

DATE

CARELINE MANAGER

DATE

SAFETY OFFICER

DATE

CHIEF OF STAFF

DATE

Drawing Title
BASEMENT FLOOR PLANS -
PLUMBING NEW WORK -
BASE BID & ALTERNATE

MEDICAL CENTER DIRECTOR

DATE

ASSOCIATE MEDICAL CENTER DIRECTOR

DATE

Project Title
MEDICAL WASTE TRAILER

Building Number
6

Checked
AJW

Drawn
WAB

Location
V.A.M.C. BUFFALO, NEW YORK

Date
February 15, 2013

Station No.
52B-12-102

09-372-P203

