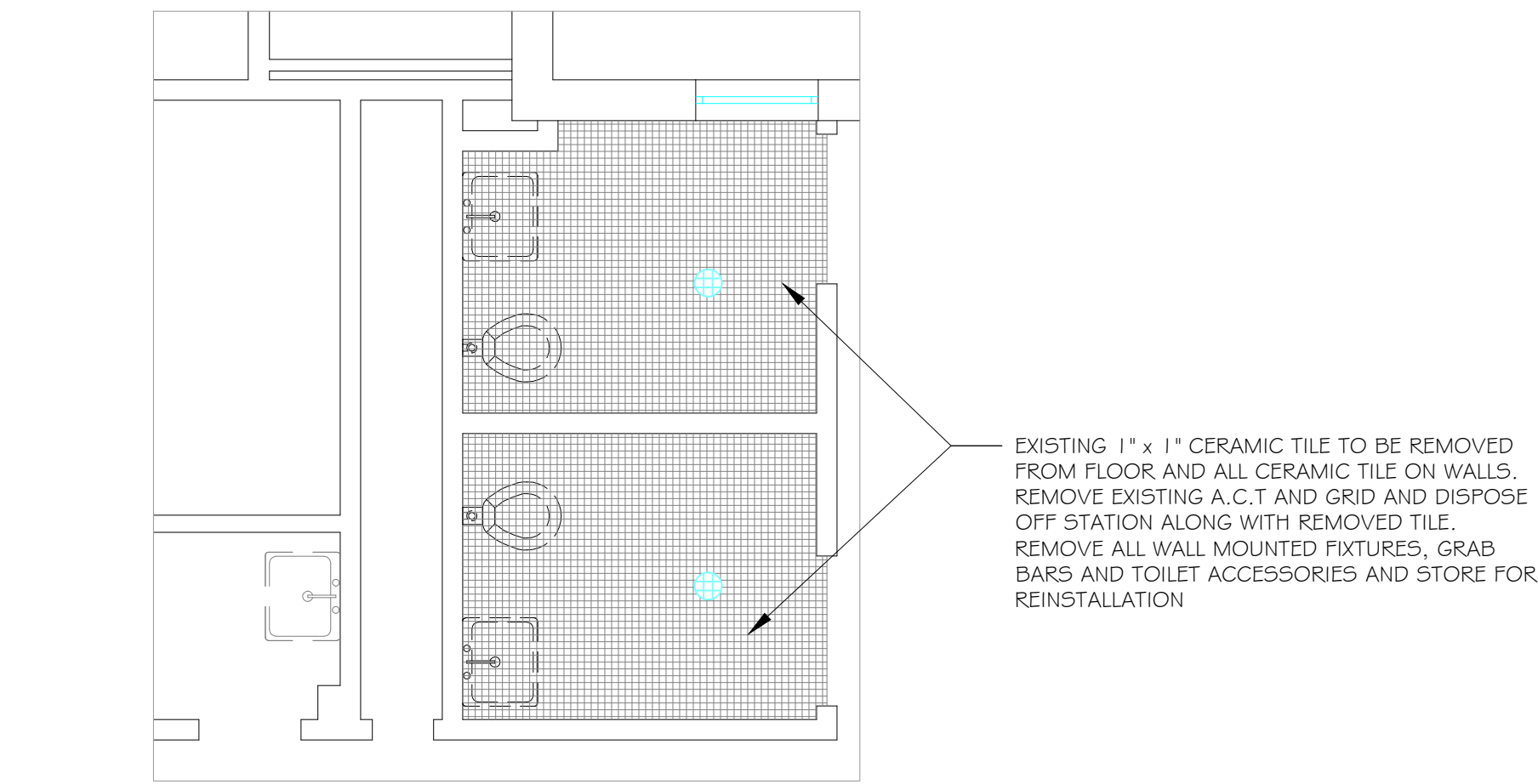
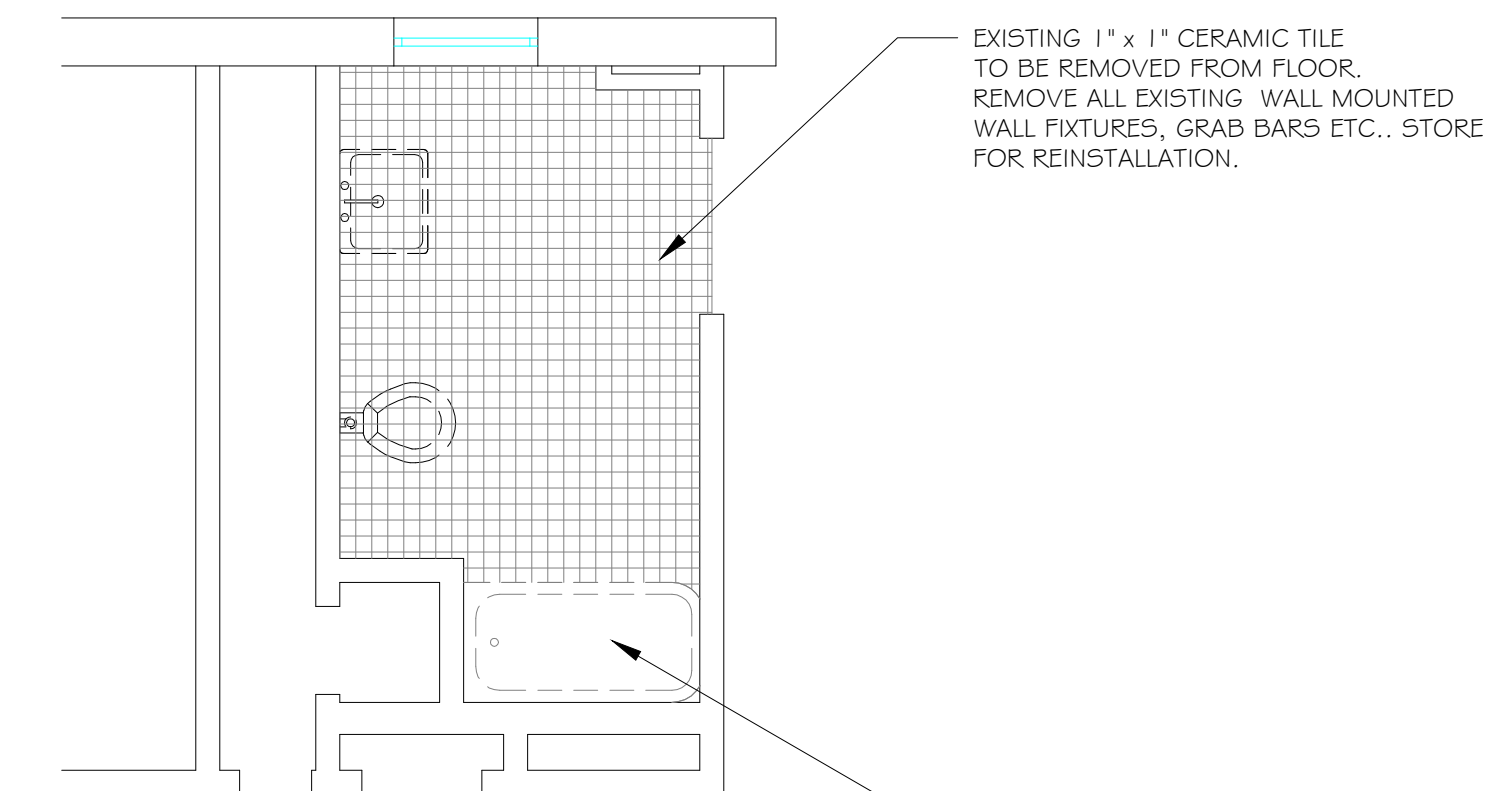


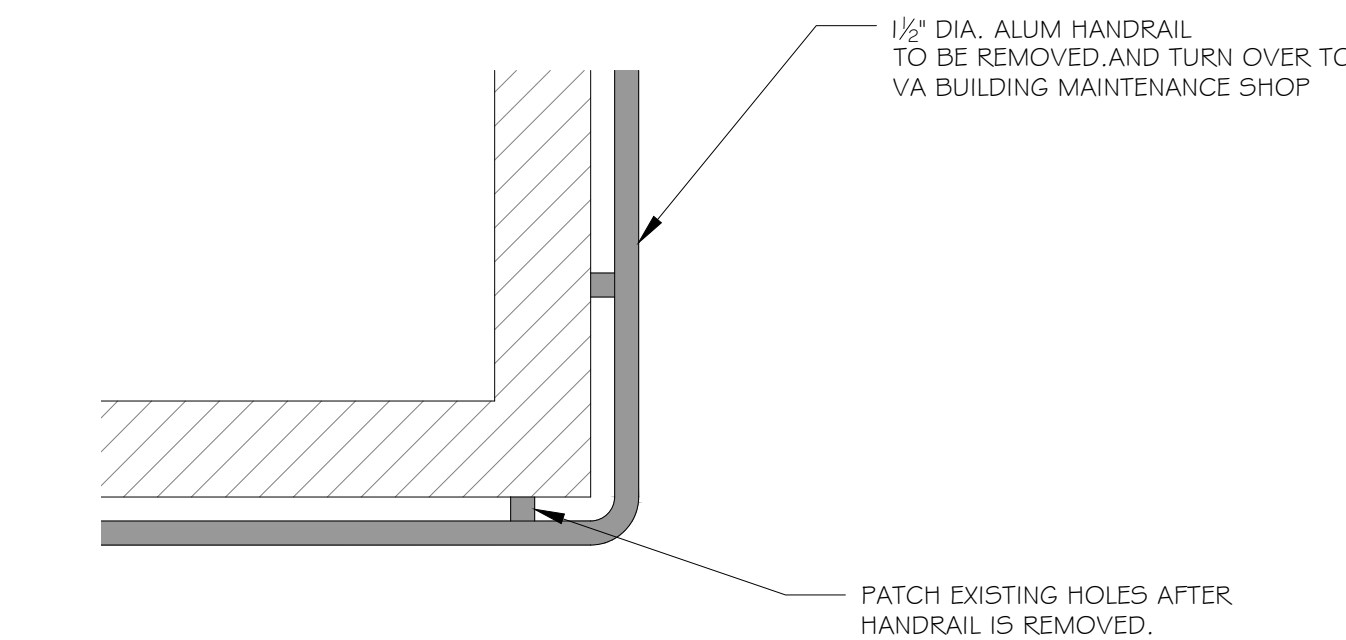
1 BLDG 7 DEMO PLAN
1/8" = 1'-0"



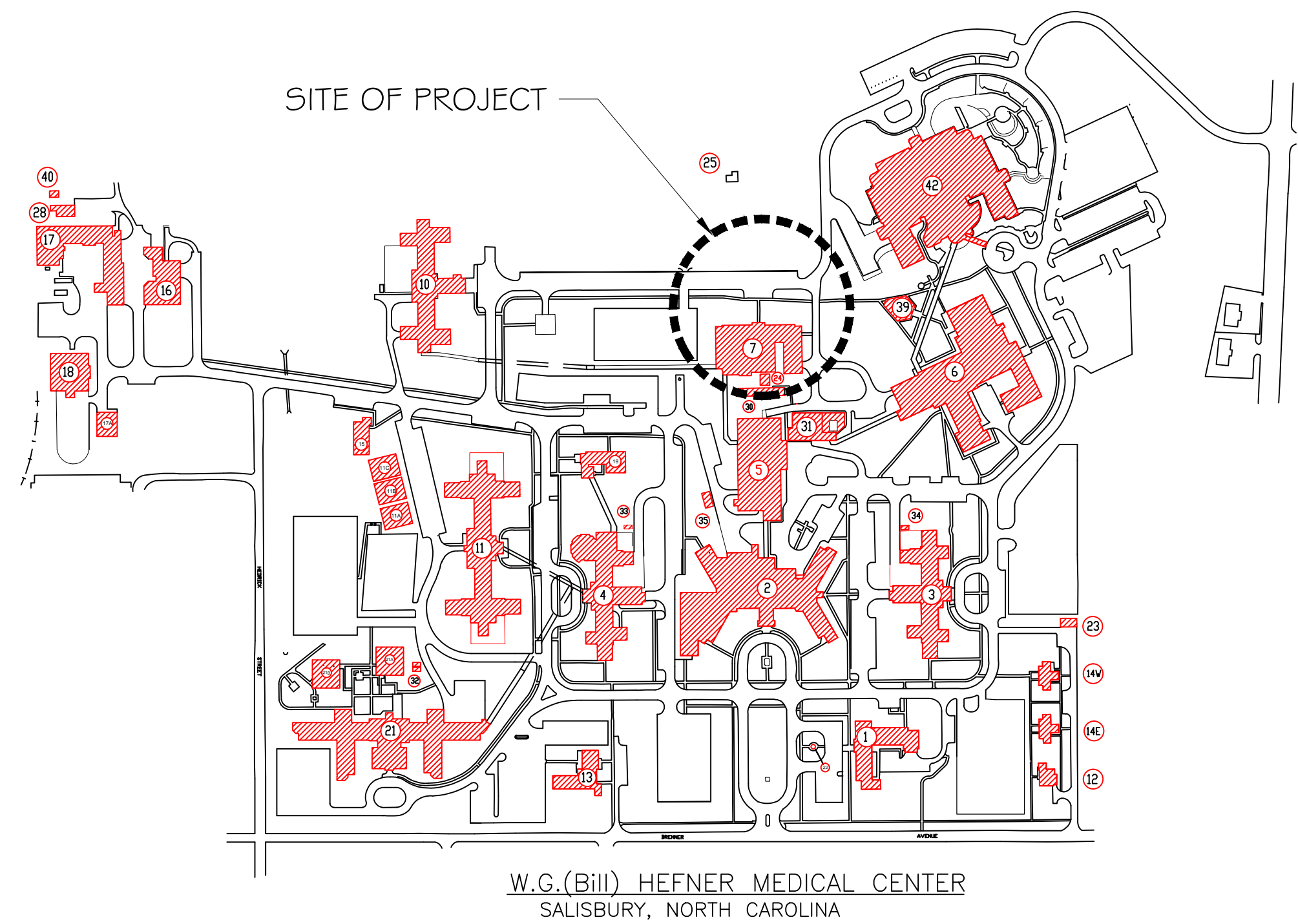
2 ROOMS 1015 & 1016 DEMO PLAN
1/4" = 1'-0"



3 ROOM 1037 DEMO PLAN
1/4" = 1'-0"



A HANDRAIL DEMO
1" = 1'-0"



GENERAL NOTES:

- REMOVE ALL ALUMINUM HANDRAIL AND TURN OVER TO V.A. MAINTENANCE SHOP. PATCH ALL HOLES IN WALL FROM REMOVAL OF HANDRAIL
- REMOVE ALL V.C.T. AND ASBESTOS MASTIC AS PER SPECS AND FEDERAL LAWS. SEE SHEET 2 FOR INFORMATION ON THE TESTING INFORMATION.
- SKIM ALL GSW WALLS FOR A SMOOTH SURFACE PRIOR TO PAINTING ALL WALL.
- REMOVE ALL A.C.T. AND DISPOSE OFF STATION. SEE SHEET 4 FOR A.C.T. AND LIGHTING LAYOUT.
- REMOVE EXISTING STOREFRONT WINDOWS AND SLIDING GLASS DOORS AND INSTALL NEW WINDOWS AND DOORS PER SPECS AND ENERGY REQUIREMENTS ON SHEET 4.
- INSTALL NEW HANDRAIL AS PER FINISH SCHEDULE IN ALL AREAS WERE ALUMINUM HANDRAIL WAS TAKEN DOWN.
- ALL FLOOR TILE TO BE REMOVED AND INSTALLED ON WEEKENDS STARTING AT 4:30 PM TO SUNDAY NIGHT AT MIDNIGHT. THIS INCLUDES THE MASTIC REMOVAL, TILE INSTALLATION AND CLEAN OF AREA.

SCOPE OF PROJECT:

THE SCOPE OF THIS PROJECT IS TO REMOVE AND REPLACE THE EXISTING V.C.T AND ASBESTOS MASTIC FROM THE CORRIDORS OF BUILDING 7. DISPOSE OF THE MASTIC AS REQUIRED BY SPECS AND FEDERAL LAW. REMOVE EXISTING HANDRAILS AND TURN OVER TO VA. SKIM COAT THE CORRIDOR WALLS PRIOR TO PAINTING, AND REMOVE ALL SIGNAGE PRIOR TO SKIM COATING. PAINT NEW WALLS AS PER FINISH SCHEDULE AND INSTALL NEW HANDRAIL ALSO BY FINISH SCHEDULE. INSTALL LEVELING COMPOUND PRIOR TO INSTALLING FLOORING MATERIAL. THE PUBLIC RESTROOMS WILL ALSO BE RENOVATED WITH THE REPLACEMENT OF NEW CERAMIC TILES AND PAINT AS PER FINISH SCHEDULE. THE VA REQUIRES THE MASTIC TO BE REMOVED OVER THE WEEKEND DUE TO THE VOLUME OF PATIENTS THAT HAVE ACCESS TO THIS BUILDING FOR APPOINTMENTS. REMOVE AND INSTALL NEW A.C.T AND 2' x 4' LIGHT FIXTURES.

THE VA WOULD LIKE THE ORDER OF CONSTRUCTION TO PROCEED IN THIS ORDER

- VCT REMOVAL AND MASTIC REMOVAL (CORRIDORS 1, 2, 3 AND 4)
- INSTALL NEW VINYL FLOORING AS PER FINISH SCHEDULE IN CORRIDORS 1,2,3 AND 4.
- REMOVE HANDRAILS AND SKIM COAT WALLS AND PAINT (CORRIDORS 1,2 AND 4)
- REMOVE EXISTING FRONT ENTRANCE AND INSTALL NEW STORE FRONT AND DOORS.
- REMOVE EXISTING A.C.T. AND LIGHT FIXTURE AND INSTALL NEW A.C.T. AND LIGHTS
- PAINT CORRIDOR 3 WITH GRIPPER AND PAINT AS PER FINISH SCHEDULE
- REMOVE EXISTING CERAMIC TILE FROM ROOMS 1015, 1016 AND 1039 AND INSTALL NEW TILE AS PER FINISH SCHEDULE.
- INSTALL NEW HANDRAIL AS REQUIRED BY FINISH SCHEDULE.
- REMOVE AND INSTALL FLOORING IN WELLNESS CENTER AND INSTALL NEW FLOORING AS PER FINISH SCHEDULE.

1. CHANGED PROJECT NOTES	3-15-13
Revision	Date

RECOMMEND APPROVAL			
REQUESTER	Date	CHIEF OF STAFF	Date
CHIEF OF SERVICE	Date	ASSOC. DIR. for OPERATIONS	Date
ASSOC. DIR. PATIENT CARE SVC.	Date	ASSOC. DIR. for OPERATIONS	Date
APPROVAL BY:	Date		
MEDICAL CENTER DIRECTOR			

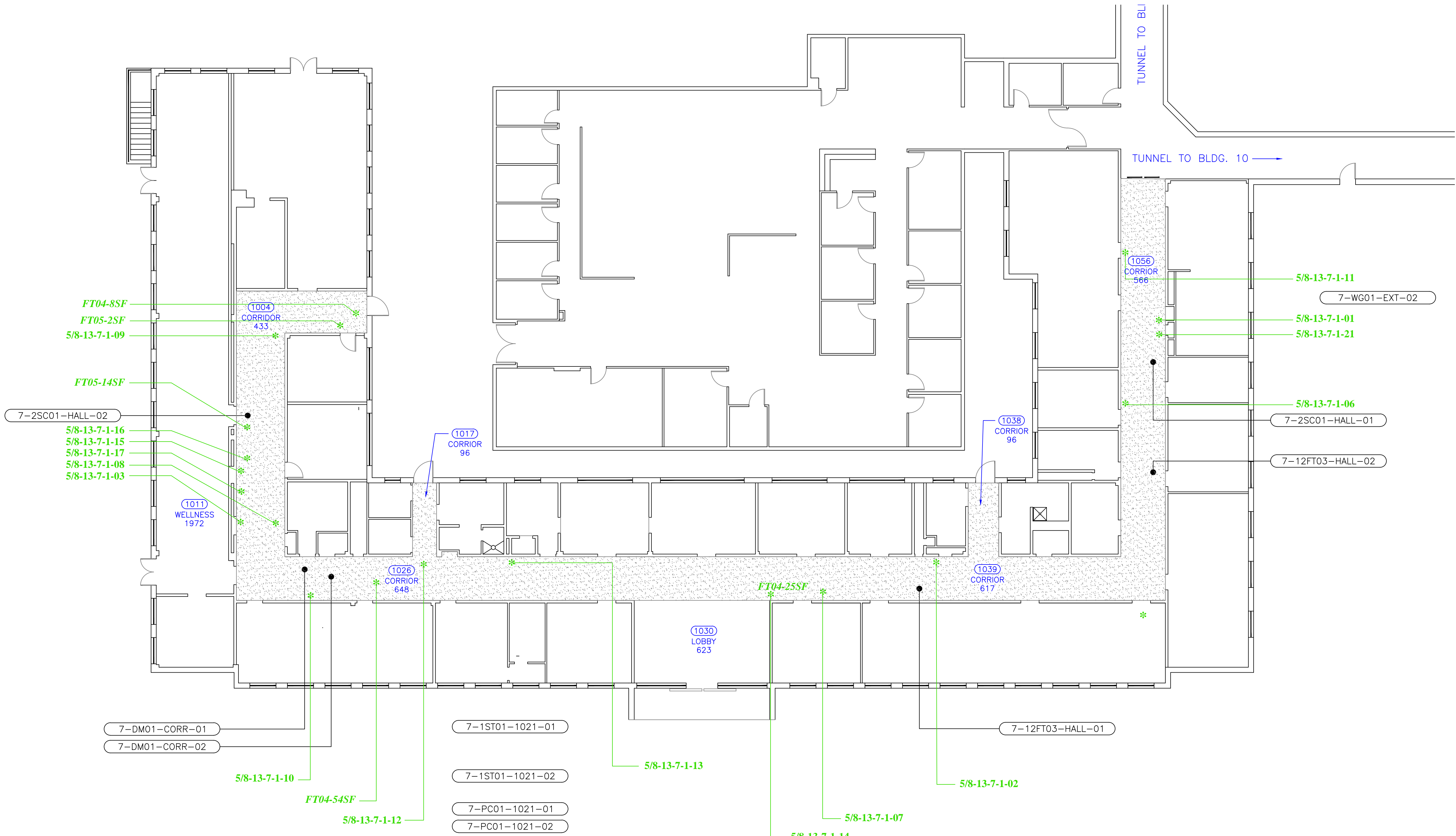
Drawing Title V.C.T AND A.C.T DEMOLITION PLAN AND NOTES.
Approved: Safety Manager/M&O Supervisor
Approved:Chief of Facilities Management Svr.

Project Title UPGRADE FINISHES B7
Building Number BLDG. 7
Location W.G.(Bill) Hefner Medical Center 1601 Brenner Ave. Salisbury NC 28144

Date 12-20-2012
Project No. 659-13-208
DRAWING NO. 1R
DWG. 1 OF 4



Department of
Veterans Affairs



V.C.T AND ASBESTOS CONTAINING MASTIC DEMO
3/32" = 1'-0"

AREAS SAMPLED JANUARY 2003
NON-ASBESTOS-CONTAINING MATERIAL

BLDG. 7
12FT03 12"x12" BLUE FLOOR TILE AND TAN MASTIC
12FT04 12"x12" BLACK WITH GRAY FLOOR TILE AND TAN MASTIC
12FT05 12"x12" WHITE FLOOR TILE AND MASTIC
12FT06 12"x12" WHITE WITH GRAY FLOOR TILE AND MASTIC
12FT07 12"x12" AQUA FLOOR TILE AND MASTIC
12FT07 12"x12" WORMHOLE/PINHOLE CEILING PANEL
2SC02 2'x2' PINHOLE/WORMHOLE CEILING PANEL
2SC03 2'x2' ROUGH FINISH CEILING PANEL
DM01 YELLOW DUCT MASTIC
DM02 GREEN DUCT MASTIC
1ST01 1'x1' SUSPENDED SMOOTH CEILING TILE
GW01 DRYWALL JOINT COMPOUND
E01 PIPE ELBOW INSULATION
PC01 PLASTER CEILING
PW01 PLASTER WALL
WG01 WINDOW GLAZING
WC01 WINDOW CAULKING
CB01 BLACK COVEBASE MASTIC
CB02 TAN COVEBASE MASTIC
RC01 ROOF CORE

TUNNEL TO BLDG. 5
PW01 PLASTER WALL
PC01 PLASTER CEILING
WC01 WINDOW CAULKING
WG01 WINDOW GLAZING
RC01 ROOF CORE
TUNNEL TO BLDG. 10
12FT01 12"x12" WHITE WITH GRAY FLOOR TILE AND MASTIC
12FT02 12"x12" GRAY FLOOR TILE AND MASTIC
CB01 TAN COVEBASE MASTIC
PW01 PLASTER WALL
WC01 WINDOW CAULKING
WG01 WINDOW GLAZING
RC01 ROOF CORE
PWS01 PARAPET WALL SEAM SEALER

SAMPLE IDENTIFICATION

9-W001-EXTERIOR-01 NON-ASBESTOS-CONTAINING MATERIAL

Homogenous Area	Sample Number	Sample Description	Locations	Results
FT01	13-7-1-01	White with Brown Fleck FT/ Black Mastic	Hall o/s RM 1051	< 1 CH-Tile, 3% CH-Mastic
	13-7-1-02	White with Brown Fleck FT/ Black Mastic	Hall o/s RM 1036	< 1 CH-Tile, 3% CH-Mastic
	13-7-1-03	White with Brown Fleck FT/ Black Mastic	Hall o/s RM 1007	< 1 CH-Tile, 3% CH-Mastic
	13-7-1-04	White with Brown Fleck FT/ Black Mastic	Office 1041	< 1 CH-Tile, 3% CH-Mastic
	13-7-1-05	White with Brown Fleck FT/ Black Mastic	Office 1033	< 1 CH-Tile, 3% CH-Mastic
FT02	13-7-1-06	Green with Dark Green and White Fleck FT/ Black Mastic	Hall o/s RM 1050	2% CH-Mastic
	13-7-1-07	Green with Dark Green and White Fleck FT/ Black Mastic	Hall o/s RM 1031	3% CH-Mastic
	13-7-1-08	Green with Dark Green and White Fleck FT/ Black Mastic	Hall o/s RM 1010	2% CH-Mastic
FT03	13-7-1-09	Blue with Dark Blue and White Fleck FT/ Black Mastic	Hall o/s RM 1001	2% CH-Mastic
	13-7-1-10	Blue with Dark Blue and White Fleck FT/ Black Mastic	Hall o/s RM 1019	2% CH-Mastic
	13-7-1-11	Blue with Dark Blue and White Fleck FT/ Black Mastic	Hall o/s RM 1054	2% CH-Mastic
FT04	13-7-1-12	Light White with Gray Fleck FT/ Black Mastic- PATCH	Hall o/s RM 1015	2% CH-Tile, 3% CH-Mastic
	13-7-1-13	Light White with Gray Fleck FT/ Black Mastic-PATCH	Hall o/s RM 1020	< 1 CH-Tile, 3% CH-Mastic
	13-7-1-14	Light White with Gray Fleck FT/ Black Mastic- PATCH	Hall o/s RM 1031	2% CH-Tile, 3% CH-Mastic
FT05	13-7-1-15	Darker White with Brown and Gray Fleck FT/ Black Mastic	Hall o/s RM 1010	< 1 CH-Tile, 3% CH-Mastic
	13-7-1-16	Darker White with Brown and Gray Fleck FT/ Black Mastic	Hall o/s RM 1010, By Scale	< 1 CH-Tile, 2% CH-Mastic
	13-7-1-17	Darker White with Brown and Gray Fleck FT/ Black Mastic	Hall o/s RM 1010	< 1 CH-Tile, 2% CH-Mastic
FT06	13-7-1-18	9"x9" Black with White Fleck FT/ Black Mastic	RM 1021	3% CH-Tile, 3% CH-Mastic
	13-7-1-19	9"x9" Black with White Fleck FT/ Black Mastic	RM 1021	3% CH-Tile, 3% CH-Mastic
	13-7-1-20	9"x9" Black with White Fleck FT/ Black Mastic	RM 1021	3% CH
FT07	13-7-1-21	Gold FT/ Black Mastic	Hall o/s RM 1053	2% CH-Mastic

DESCRIPTION	LOCATION
FT01-12"x12" WHITE W/ BROWN FLECK FT/BLACK MASTIC (1-5)	*IN ALL OFFICES & ALSO UNDER CARPET
FT02-12"x12" GREEN W/DARK GREEN & WHITE FLECK FT/BLACK MASTIC (6-8)	
FT03-12"x12" BLUE W/ DARK BLUE & WHITE FLECK FT/BLACK MASTIC (9-11)	
FT04-12"x12" LIGHT WHITE W/ GRAY FLECK FT/BLACK MASTIC (12-14)	
FT05-12"x12" DARKER WHITE W/BROWN & GRAY FLECK FT/BLACK MASTIC (15-17)	
FT06-9"x9" BLACK W/ WHITE FLECK FT/BLACK MASTIC	
FT07-12"x12" GOLD FT/BLACK MASTIC (21)	

//////

I. ADD NOTE ABOUT MASTIC SCHEDULE	3-15-13
Revision	Date

NOTE: THE REMOVAL OF THE MASTIC SHALL BE COMPLETED ON THE WEEKEND FROM FRIDAY AFTER 4:30 PM TO SUNDAY AT MIDNIGHT.

RECOMMEND APPROVAL			
REQUESTER	Date	CHIEF OF STAFF	Date
CHIEF OF SERVICE	Date	ASSOC. DIR. for OPERATIONS	Date
ASSOC. DIR. PATIENT CARE SVC.	Date	ASSOC. DIR. for OPERATIONS	Date
APPROVAL BY:	Date		
MEDICAL CENTER DIRECTOR			

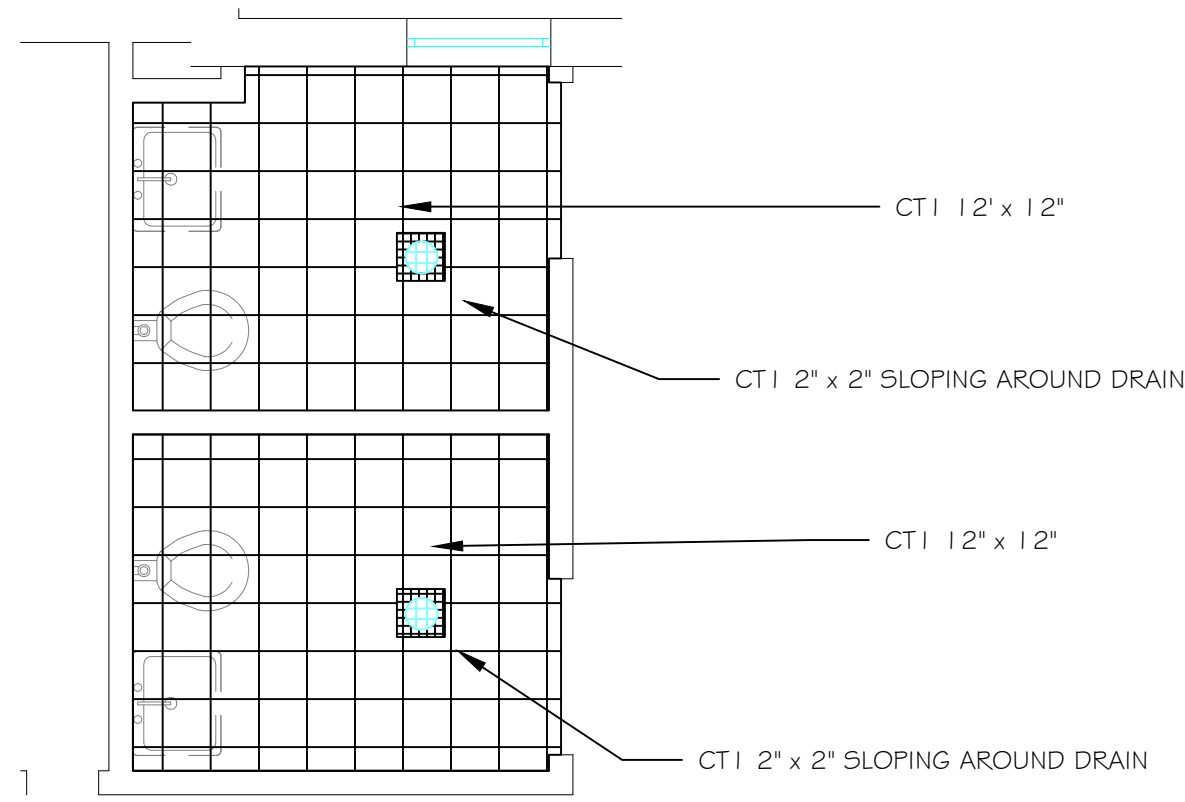
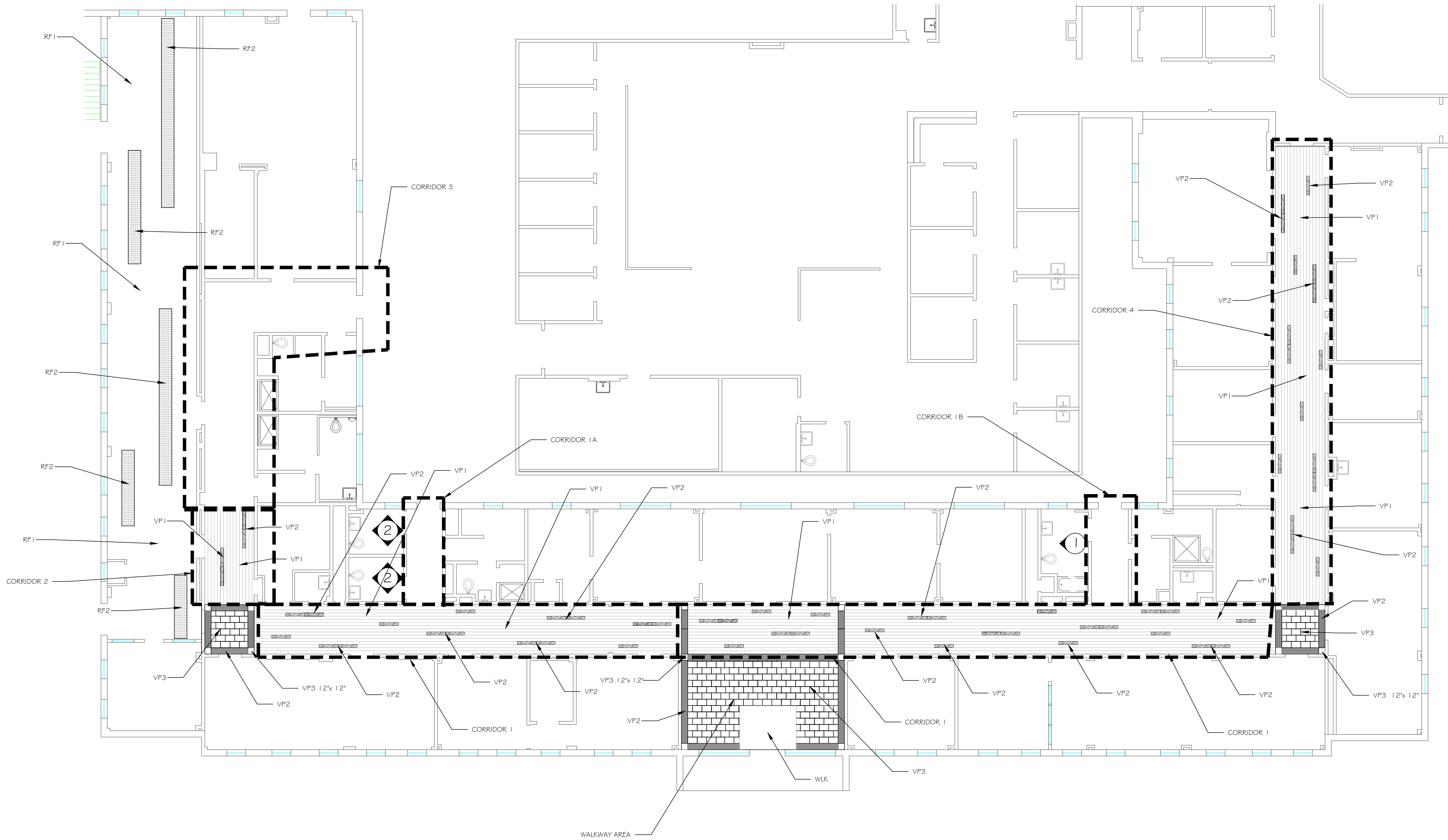
Drawing Title BUILDING 7 MASTIC REMOVAL INFORMATION FROM PREVIOUS TESTING	Approved: Safety Manager/M&O Supervisor
Approved:Chief of Facilities Management Svr.	

Project Title UPGRADE FINISHES B7	Building Number BLDG. 7	Checked G.L.M.	Drawn G.L.M.
Location W.G.(Bill) Hefner Medical Center 1601 Brenner Ave. Salisbury NC 28144			

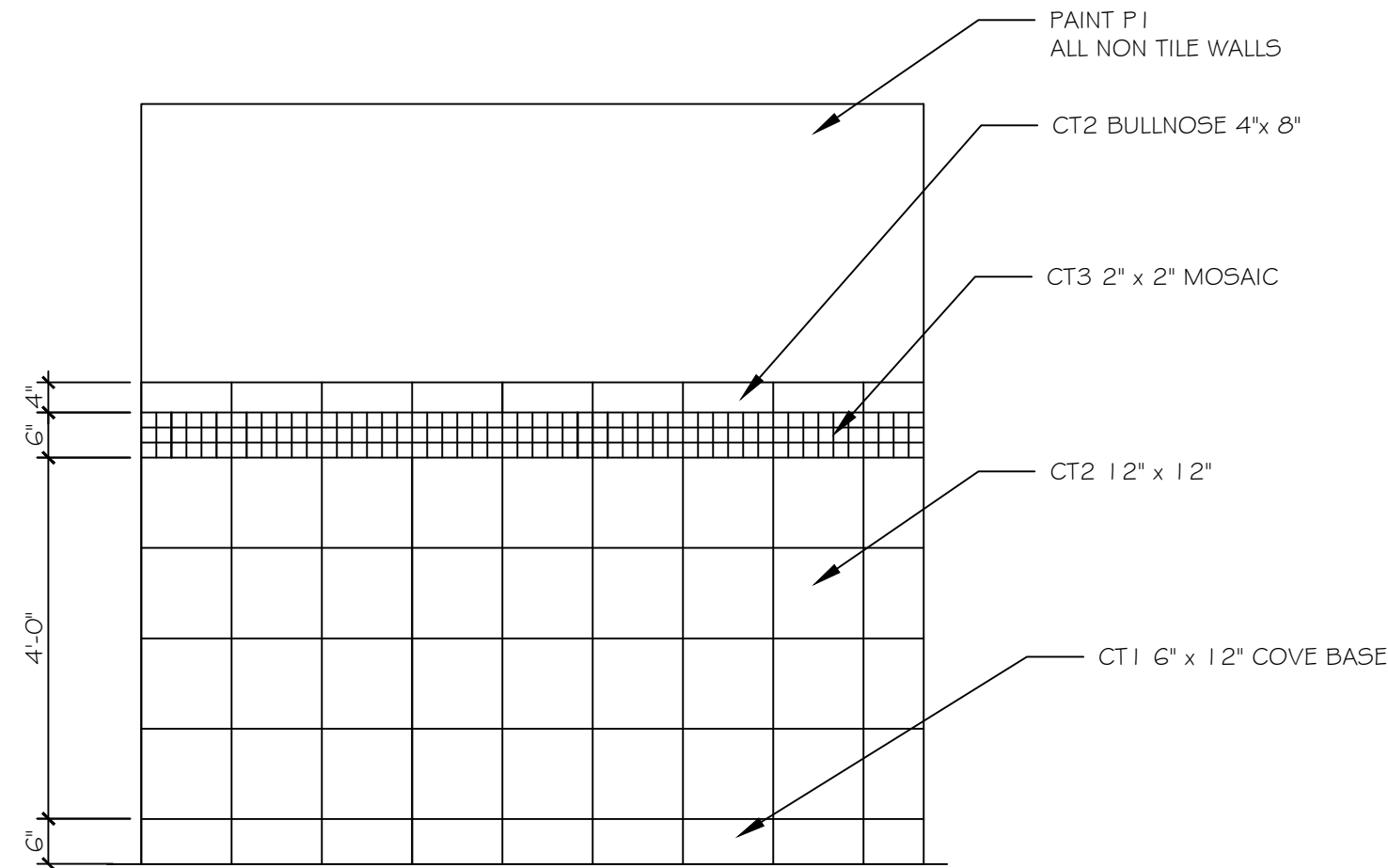
Date 12-20-2012	Project No. 659-13-208
DRAWING NO. 2R	DWG. 2 OF 4



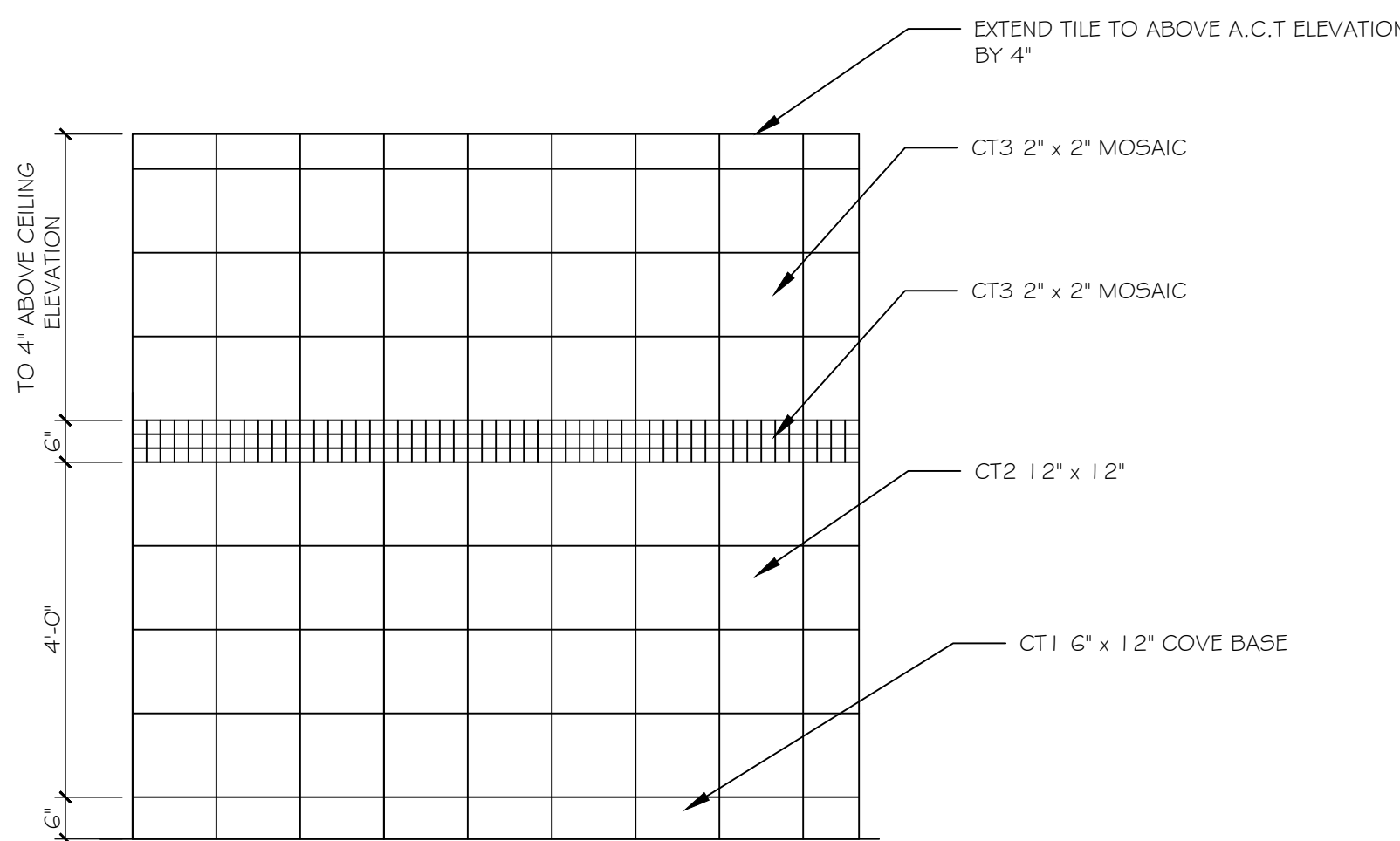
Department of
Veterans Affairs



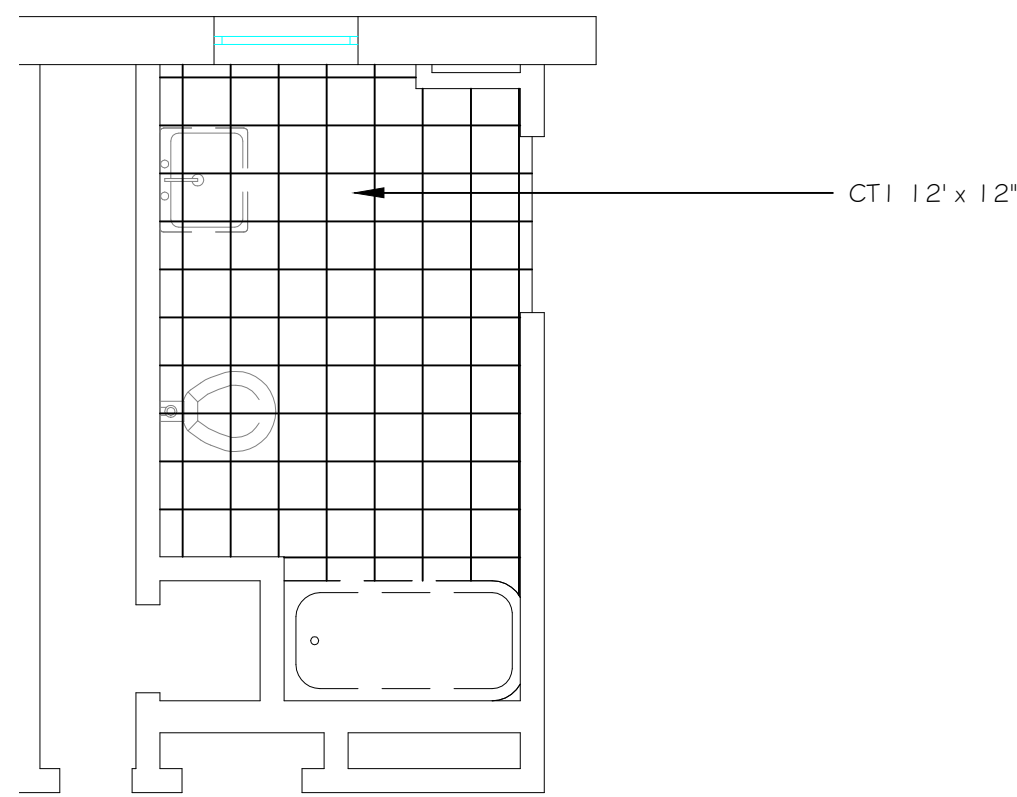
3 RMS 1015/1016 NEW TILE PLAN
1/4" = 1'-0"



1 ELEVATION NORTH WALL RM 1037
1/2" = 1'-0"



2 ELEVATION NORTH WALL RM 1037
1/2" = 1'-0"



3 ROOM 1037 NEW TILE PLAN
1/4" = 1'-0"

BUILDING 7 PROJECT LEGEND 659-13-208			
ITEM	CODE	MANUFACTURE / STYLE	Mfr.'s COLOR NAME#
PAIN	P1	ICI LOW LUSTER	WATER CHESTNUT 411607
	P2	SHERMAN WILLIAM SATIN	UNUSAL GRAY SW7059
	P3	SHERMAN WILLIAM SATIN	MACADAMIA WHITE L07516
	P4	SHERMAN WILLIAM TRIM WATERBORNE ENAMEL	POISED TAUPÉ SW6039
RUBBER FLOOR	RF1	JOHNSONITE INERTIA 24" x 24" RUBBER TILE (FIELD) SQ. EDGE	742 PLAZA J2 THICK
	RF2	JOHNSONITE INERTIA 24" x 24" RUBBER TILE SQ. EDGE	734 HYDRATE J2 THICK
BASE	B1	JOHNSONITE 6" RUBBER COVE BASE	80 FAWN
	B2	JOHNSONITE 6" RUBBER COVE BASE	92 BLUE LAGOON
LUXURY VINYL PLANK	VP1	CENTIVA RAYS 6" x 36" PLANK SQ. EDGE (FIELD)	PD0795-C ORE PR SURFACE
	VP2	CENTIVA CONTOUR PLANK 6" x 36" SQ. EDGE	CP3322-C PALE STRATA NG SURFACE
	VP3	CENTIVA STRIA 12" x 18" SQ. EDGE	SA1003-V BRONZE SR SURFACE
VCT	VCT4	MANNINGTON ESSENTIALS QUARTER TURN	OTTER BROWN 173
CERAMIC TILE	CT1	CROSSVILLE PALAIS PORCELAIN STONE 12" x 12"	LAMBOURG AV144
	CT2	CROSSVILLE PALAIS PORCELAIN STONE 12" x 12"	LOURVE AV142
	CT3	CROSSVILLE PALAIS PORCELAIN 2" x 2" MOSAIC	LAMBOURG AV144
WALK OFF MAT	WLK	MANNINGTON LASON COLLECTION RECARSE 2	TRAVERSE TAN (64131) 24" x 24"
CEILING TILE		CERTAINTED FINE FIGURED REVEAL EDGE (BEVELED)	HHF157 24" x 24" x 3/8"
HANDRAILS	HR	INPRO CORPORATION ARROW WITH 90955 MOUNTING BRACKETS, RETURNING ROOM IN	NATURAL MAPLE 0531

BUILDING 7 PROJECT FINISH SCHEDULE 659-13-208									
ROOM NAME	FLOOR	BASE	NORTH	EAST	SOUTH	WEST	DOOR FRAME	HANDRAIL	NOTES
ENTRY	VP1, 2, 3, WLK	B1	P1	P1	P1	P1	P4		NOTE 1
COORRIDOR 1	VP1, 2, 3	B1	P1	P2	P1	P1	P4		
CORRIDOR 1A	VP1	B1	P1	P1	P1	P1	P4	HR	NOTE 1
CORRIDOR 1B	VP1	B1	P1	P1	P1	P1	P4	HR	
CORRIDOR 2	VP1, 2, 3	B1	P1	P2	P1	P1	P4	HR	NOTE 1
CORRIDOR 3	VCT	B1	P1	P1	P1	P1	P4	HR	NOTE 3
CORRIDOR 4	VP1, 2, 3	B1	P1	P2	P1	P1	P4	HR	NOTE 1
WELLNESS 1011	RF1, RF2	B2	P3	P3	P3	P3	P4		NOTE 1
PUBLIC RESTROOM 1016	CT1	CT1 COVE	CT2/CT3/P1	CT2/CT3/P1	CT2/CT3/P1	CT2/CT3/P1	P4		NOTE 2
PUBLIC RESTROOM 1015	CT1	CT1 COVE	CT2/CT3/P1	CT2/CT3/P1	CT2/CT3/P1	CT2/CT3/P1	P4		NOTE 2
PUBLIC RESTROOM 1037	CT1	CT1 COVE NORTH WALL	CT2/CT3/P1	P1	P1	P1	P4		NOTE 2

NOTES:
NOTE 1: SEE DRAWING FOR PATTERN DETAIL, REMOVE ALL ITMES FROM WALL AND DOOR FRAMES. REMOVE SIGNAGE TO REINSTALL AT ADA HEIGHT.
NOTE 2: SEE DRAWING FOR ELEVATION DETAILS. AROUND FLOOR DRAINS USE 2" TILE FOR SLOPE ONLY THEN USE 12" x 12" FOR REMAINDER OF FLOOR/
NOTE 3: NO SKIM COAT OVER GSU, USE GRIPPER APPROPRIATE FOR SURFACE FOR PAINT TO ADHERE.

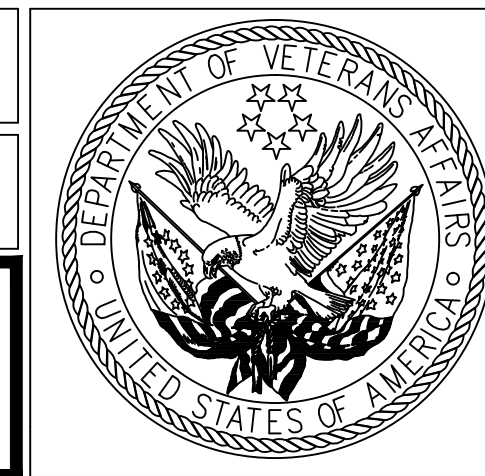
Revision	Date

RECOMMEND APPROVAL			
REQUESTER	Date	CHIEF OF SERVICE	Date
CHIEF OF SERVICE	Date	CHIEF OF STAFF	Date
ASSOC. DIR. PATIENT CARE SVC.	Date	ASSOC. DIR. for OPERATIONS	Date
APPROVAL BY:	Date		
MEDICAL CENTER DIRECTOR			

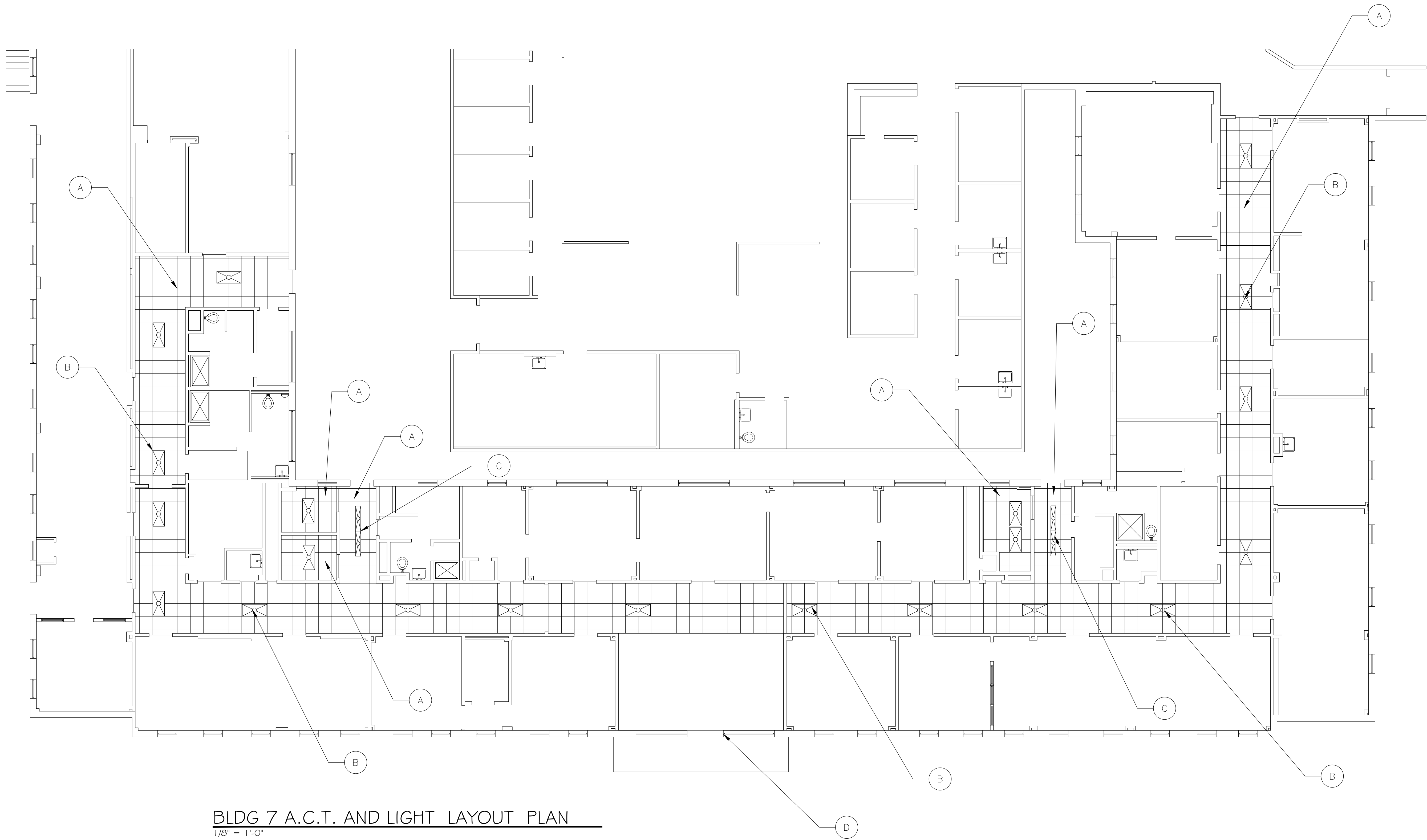
Drawing Title V.C.T., CERAMIC TILE REPLACEMENT AND INFORMATION
Approved: Safety Manager/M&O Supervisor
Approved:Chief of Facilities Management Svr.

Project Title UPGRADE FINISHES B7
Building Number BLDG. 7
Location W.G.(BIII) Hefner Medical Center 1601 Brenner Ave. Salisbury NC 28144

Date 12-20-2012
Project No. 659-13-208
DRAWING NO. 3
DWG. 3 OF 4



Department of
Veterans Affairs

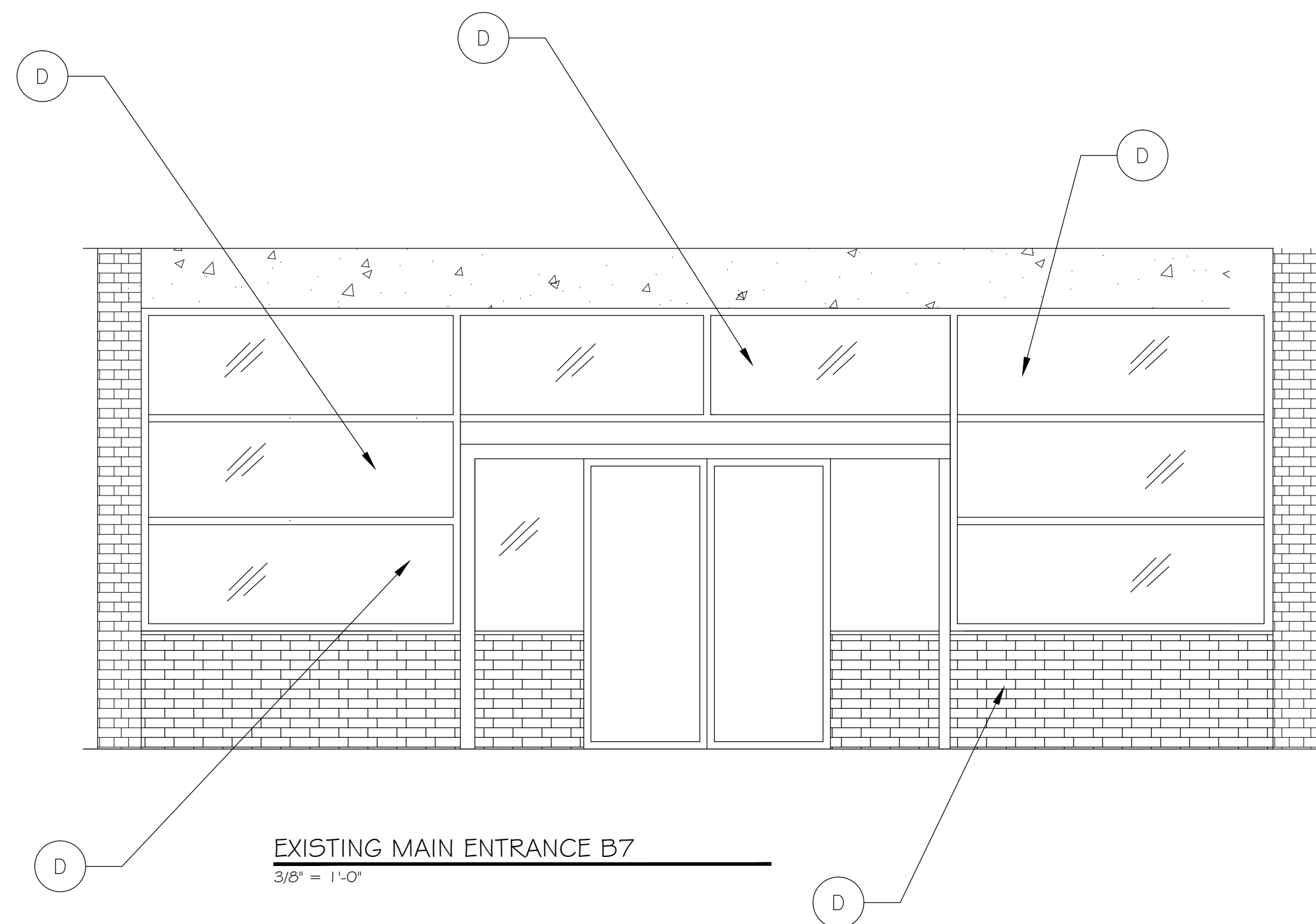


BLDG 7 A.C.T. AND LIGHT LAYOUT PLAN

1/8" = 1'-0"

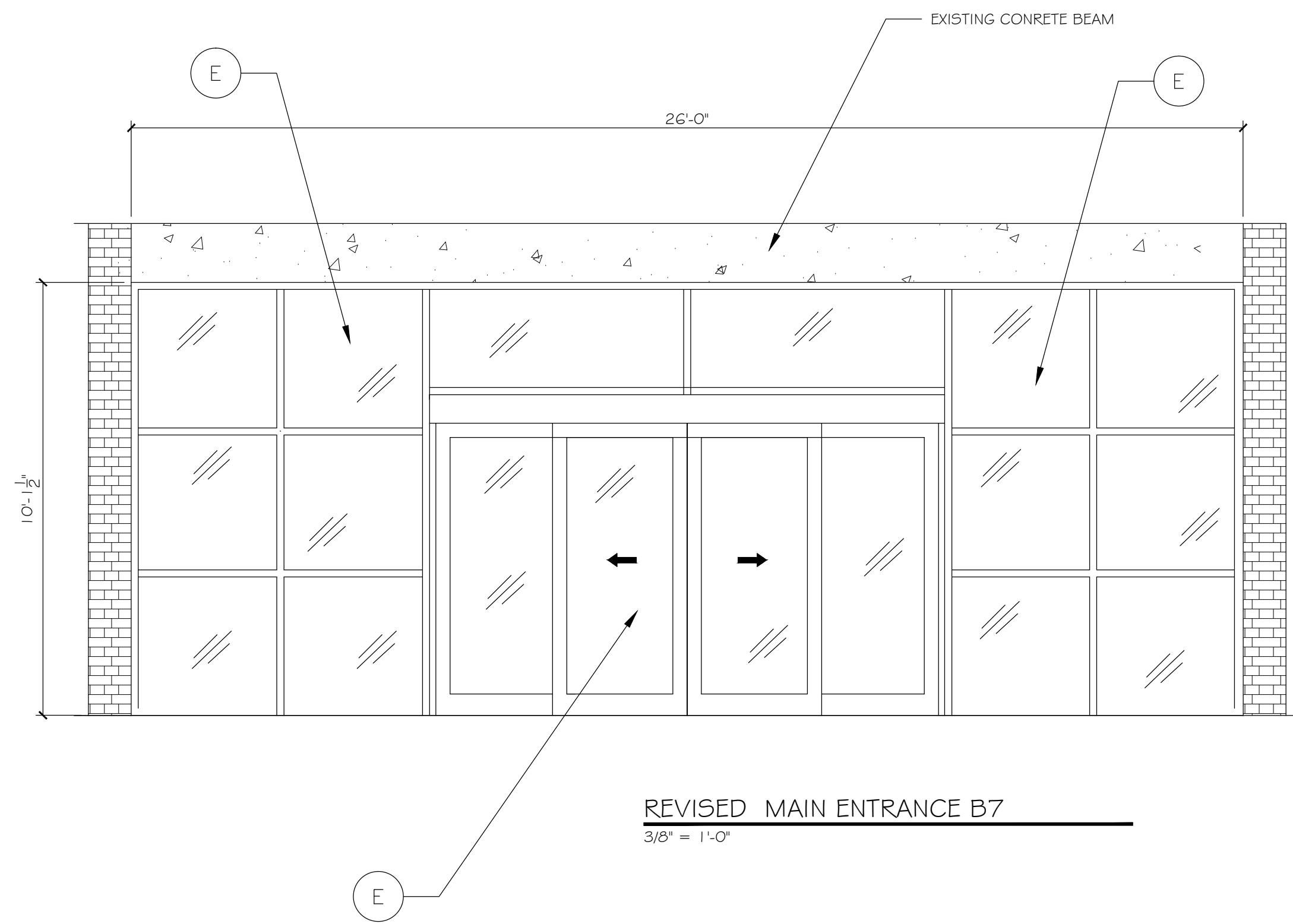
BUILDING 7 CEILING AND LIGHTS:

- A. PROVIDE AND INSTALL NEW A.C.T. AND GRID AS REQUIRED BY FINISH SCHEDULE ON SHEET 3.
- B. PROVIDE AND INSTALL NEW 2' x 4' LED LIGHT FIXTURES MODEL CR24-40LH-40K BY CREE OR EQUAL.
- C. PROVIDE AND INSTALL NEW 1' x 4' LED LIGHT FIXTURES MODEL CR14-40LH-40K BY CREE OR EQUAL.
- D. REMOVE EXISTING BRICK AND GSI WALL, ELECTRIC SLIDING DOOR AND ALL METAL STORE FRONT WINDOW MATERIAL AND DISPOSE OFF STATION. CONTRACTOR TO BUILD NEW TEMPORARY FRONT FOR SECURITY IF REMOVED PRIOR TO RECEIVING NEW MATERIAL FOR INSTALLATION.
- E. PROVIDE AND INSTALL NEW ALUMINUM STORE FRONT WINDOWS AND NEW SLIDING GLASS DOOR MODEL OC12-12 BY BESAM DOORS OR EQUAL.



EXISTING MAIN ENTRANCE B7

3/8" = 1'-0"



REVISED MAIN ENTRANCE B7

3/8" = 1'-0"

INSULATION VALUES						
PER ASHRAE STANDARD 90.1-2010						
STATION	CLIMATE ZONE	ROOF INSULATION	WALL INSULATION	FLOOR INSULATION	DOOR MAX (OVERALL U)	WINDOWS MAX U
SALISBURY (659)		R20 G; METAL R13+ R13; ATTIC R36	R13; 7.5 G; METAL R19; MASS 9.5 G	R30 SLAB R15 FOR 24"	0.07	0.06
						0.25

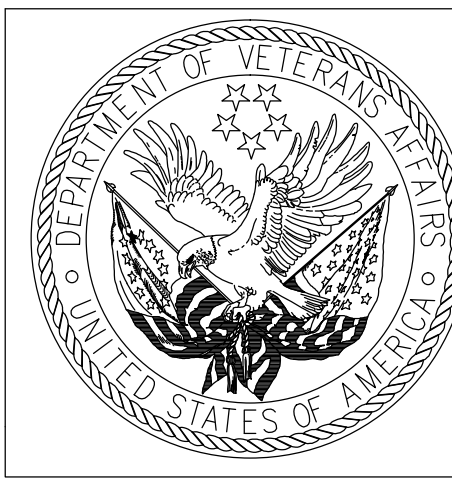
ANY GLAZING WITHIN AN EXTERIOR DOOR SHALL HAVE A MINIMUM U FACTOR = 0.9

RECOMMEND APPROVAL			
REQUESTER	Date	CHIEF OF STAFF	Date
CHIEF OF SERVICE	Date	CHIEF OF STAFF	Date
ASSOC. DIR. PATIENT CARE SVC.	Date	ASSOC. DIR. for OPERATIONS	Date
APPROVAL BY:	Date		
MEDICAL CENTER DIRECTOR			

Drawing Title	
A.C.T., LIGHTS AND ENTRANCE DOOR AND WINDOWS REPLACEMENT	
Approved: Safety Manager/M&O Supervisor	
Approved: Chief of Facilities Management Svr.	

Project Title		
UPGRADE FINISHES B7		
Building Number	Checked	Drawn
BLDG. 7		G.L.M.
Location		
W.G.(Bill) Hefner Medical Center 1601 Brenner Ave. Salisbury NC 28144		

Date
12-20-2012
Project No.
659-13-208
DRAWING NO.
4
DWG. 4 OF 4



Department of
Veterans Affairs