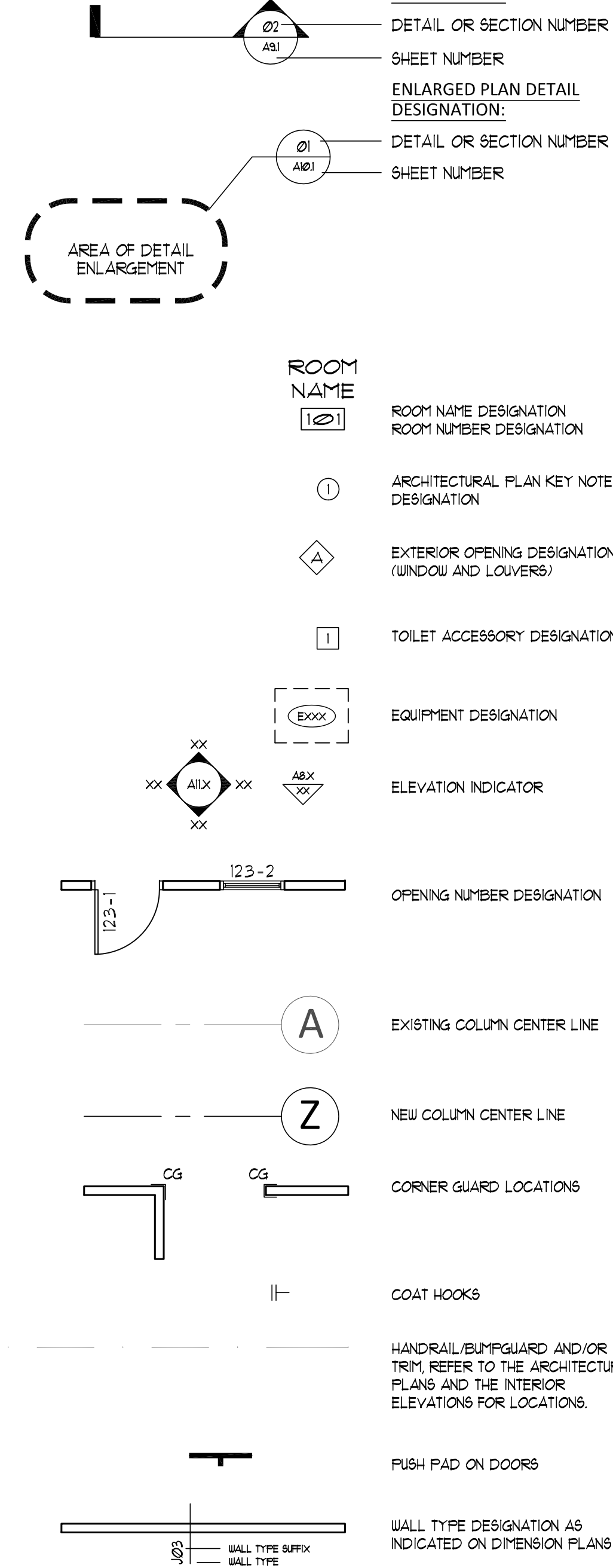
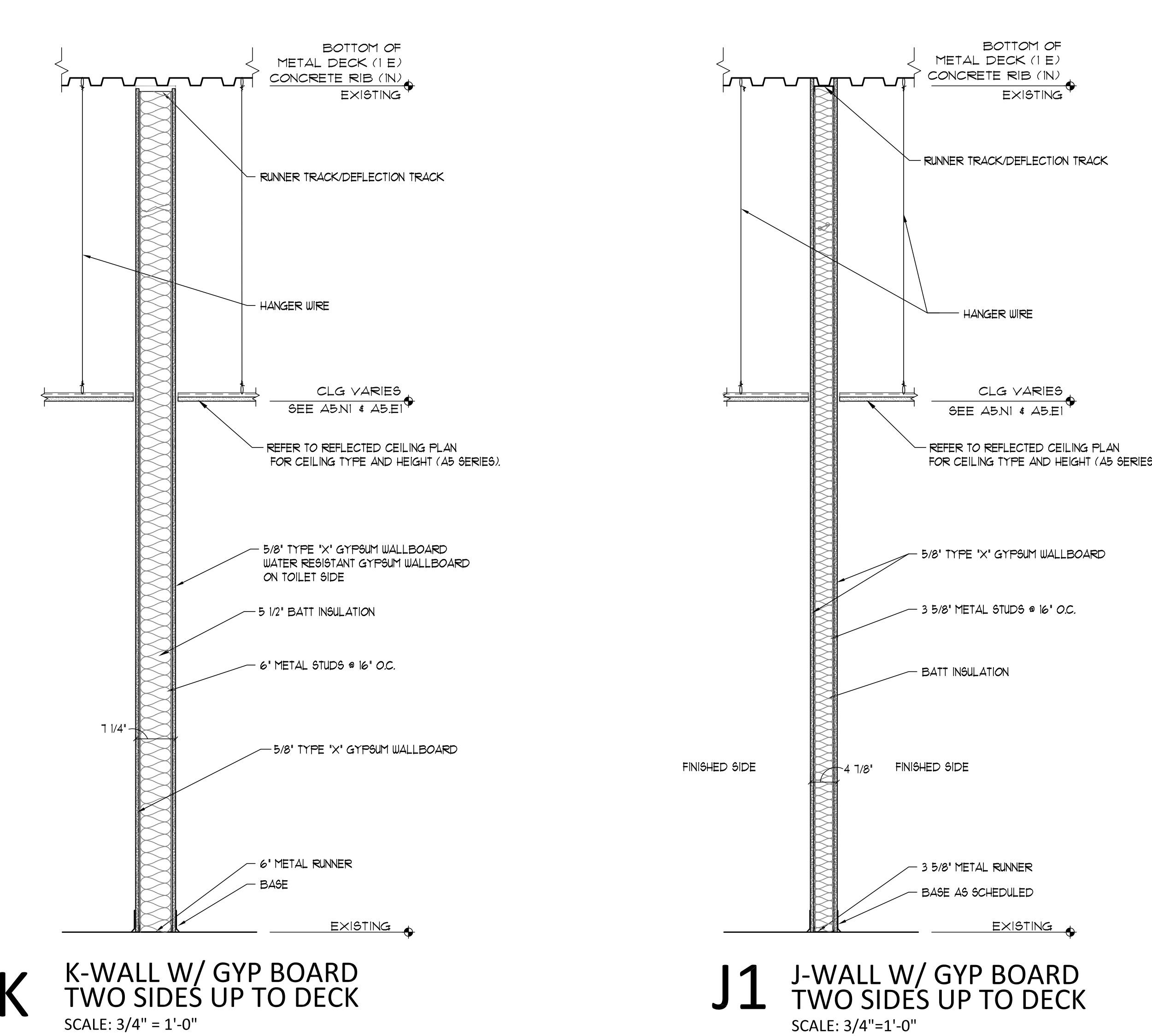


TYPICAL INTERIOR WALL SECTIONS:

SYMBOLS:

GENERAL WALL TYPE NOTES:

SHEET INDEX:

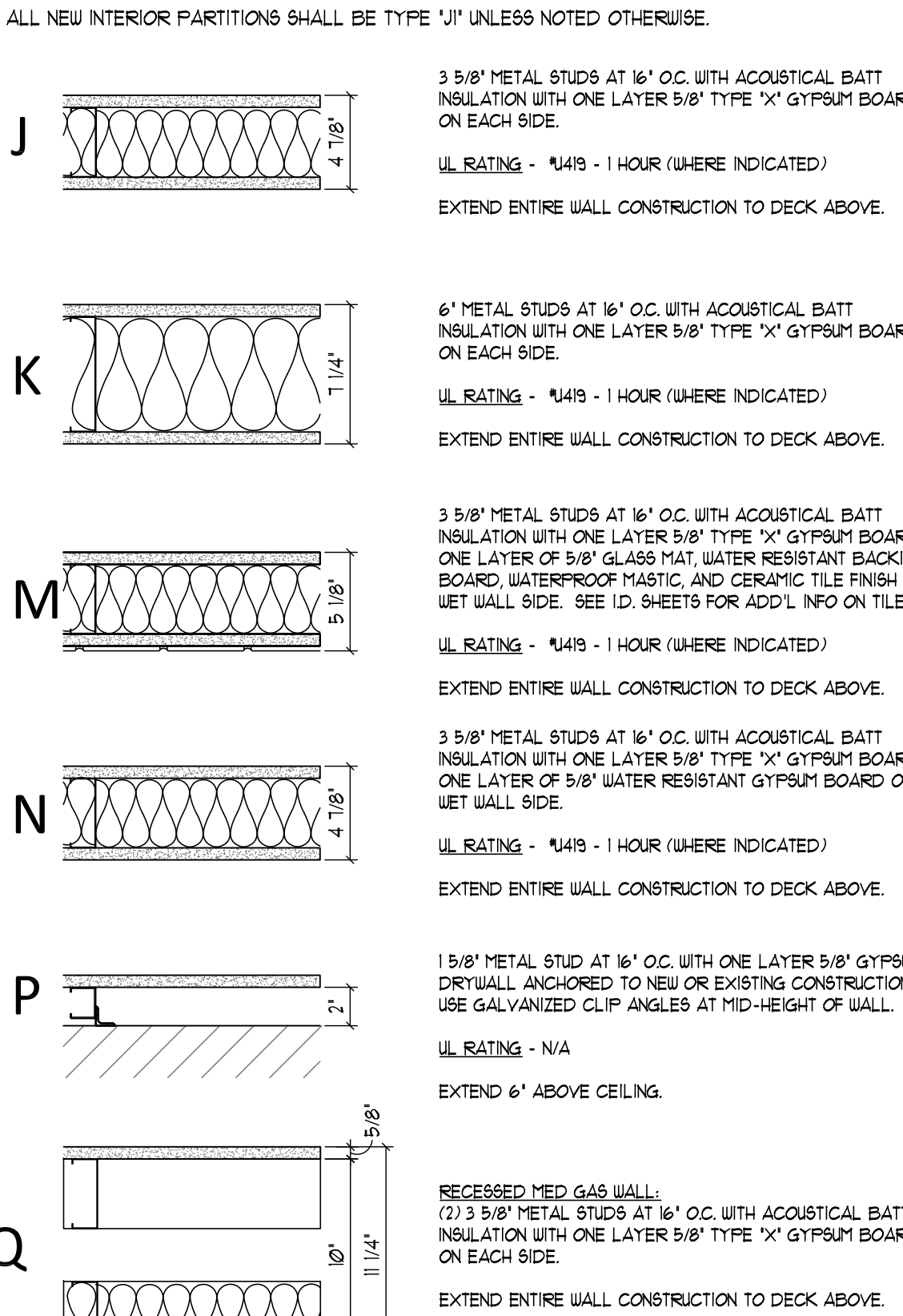


- A. REFER TO WALL RATINGS LEGEND ON EACH SHEET FOR IDENTIFICATION OF RATED WALL ASSEMBLIES.
- B. ALL SOUND AND RATED ASSEMBLY WALLS SHALL EXTEND UP FROM FLOOR SUBSTRATE UP TO THE STRUCTURAL DECK ABOVE. ALL PENETRATIONS SHALL BE SEALED AROUND THE PERIMETER OF THE PENETRATIONS WITH ACOUSTICAL/FIRE STOP SEALANTS, RESPECTIVELY.
- C. ALL FIRE RATED ASSEMBLIES SHALL CONFORM TO UL TESTED DESIGNS OR OTHER TESTS BY OTHER TESTING AGENCIES.

WALL TYPE SUFFIXES:

- NOTE: NOT ALL WALL TYPE SUFFIXES IN THE LEGEND ARE UTILIZED ON THIS PROJECT.
- ADD ACOUSTICAL BATT INSULATION TO WALL ASSEMBLY AND EXTEND TO DECK ABOVE.
 - EXTEND WALL CONSTRUCTION TO 6" ABOVE CEILING.
 - PROVIDE GYPSUM WALLBOARD ON FINISHED ROOM SIDE ONLY.
 - SUBSTITUTE 6" METAL STUD IN LIEU OF 3 5/8" METAL STUD.
 - SUBSTITUTE CATEGORY-4 EXTREME DUTY GYPSUM IN LIEU OR TYPICAL 5/8" GYPSUM ON TREATMENT ROOM SIDE ONLY.

WALL TYPES:
METAL STUD FRAMING



ESTIMATED PROJECT DURATION:

PHASE 1	365 CALENDAR DAYS
TRANSITION BETWEEN PHASES	30 CALENDAR DAYS
PHASE 2	270 CALENDAR DAYS

NOTE: CONTRACTOR SHALL PROVIDE PERIODIC CONSTRUCTION SCHEDULE TO COR AND A/E ACCORDING TO PROJECT MANUAL

LIST OF CONSULTANTS:

- TNF VETERAN LLC
- 3 EXECUTIVE COURT, UNIT 4
SOUTH BARRINGTON, IL 60010
TEL: 224-633-1588
FAX: 847-756-4186
- TEG ARCHITECTS
- 820 JORDAN STREET, SUITE 507
SHREVEPORT, LA 71101
TEL: 318-424-3700
FAX: 318-424-3764
- TEG INTERIORS
- 903 SPRING STREET
JEFFERSONVILLE, IN 47130
TEL: 812-282-3700
FAX: 812-282-4383
- HUGHES ASSOCIATES, INC.
- 2121 WEST SPRING CREEK PARKWAY
PLANO, TX 75023
TEL: 972-491-1900
- ALLIET, FENNER, JOLLY AND MCCLELAND, INC.
- 3003 KNIGHT STREET, SUITE 120
SHREVEPORT, LA 71105
TEL: 318-425-7452
FAX: 318-425-4622
- SRP ENVIRONMENTAL
- 348 AERO DRIVE
SHREVEPORT, LA 71107
TEL: 318-222-2364
FAX: 318-222-2326

MECHANICAL

- M0.1 MECHANICAL NOTES, SYMBOLS AND ABBREVIATIONS
- M1.N1 FIRST FLOOR - NORTH MECHANICAL PLAN
- M1.N2 FIRST FLOOR - NORTH MECHANICAL PIPING PLAN
- M1.E1 FIRST FLOOR - NORTH MECHANICAL PLAN
- M1.E2 FIRST FLOOR - EAST MECHANICAL PIPING PLAN
- M2.N1 FIRST FLOOR - NORTH MECHANICAL DEMO
- M2.N2 FIRST FLOOR - NORTH MECHANICAL PIPING DEMO
- M2.E1 FIRST FLOOR - EAST MECHANICAL DEMO
- M2.E2 FIRST FLOOR - EAST MECHANICAL PIPING DEMO
- M3.1 MECHANICAL SCHEDULES
- M3.2 MECHANICAL SCHEDULES
- M3.3 MECHANICAL SCHEDULES
- M4.1 MECHANICAL DETAILS
- M4.2 MECHANICAL DETAILS
- M4.3 MECHANICAL DETAILS
- M4.4 MECHANICAL DETAILS
- M5.N1 FIRST FLOOR - MECHANICAL SECTIONS
- M6.1 MECHANICAL FLOW DIAGRAM
- M7.1 MECHANICAL CONTROL DETAILS AND SEQUENCE OF OPERATIONS
- M7.2 MECHANICAL CONTROL DETAILS AND SEQUENCE OF OPERATIONS

PLUMBING

- P0.1 PLUMBING NOTES, SYMBOLS AND ABBREVIATIONS
- P1.N1 FIRST FLOOR - NORTH SANITARY AND VENT PLUMBING PLAN
- P1.N2 FIRST FLOOR - NORTH WATER DISTRIBUTION PLUMBING PLAN
- P1.E1 FIRST FLOOR - EAST PLUMBING PLAN
- P2.N1 NORTH FIRST FLOOR PLUMBING DEMO
- P2.E1 FIRST FLOOR - EAST PLUMBING DEMO
- P3.1 PLUMBING SCHEDULES
- P3.2 PLUMBING SCHEDULES
- P4.1 PLUMBING DETAILS
- P5.N1 PLUMBING RISERS
- P5.E1 PLUMBING RISERS

FIRE PROTECTION

- FP0.1 FIRE PROTECTION GENERAL NOTES
- FP1.N1 FIRST FLOOR - NORTH FIRE PROTECTION NEW PLAN
- FP1.E1 FIRST FLOOR - EAST FIRE PROTECTION NEW PLAN
- FP2.N1 FIRST FLOOR - NORTH FIRE PROTECTION DEMOLITION PLAN
- FP2.E1 FIRST FLOOR - EAST FIRE PROTECTION DEMOLITION PLAN

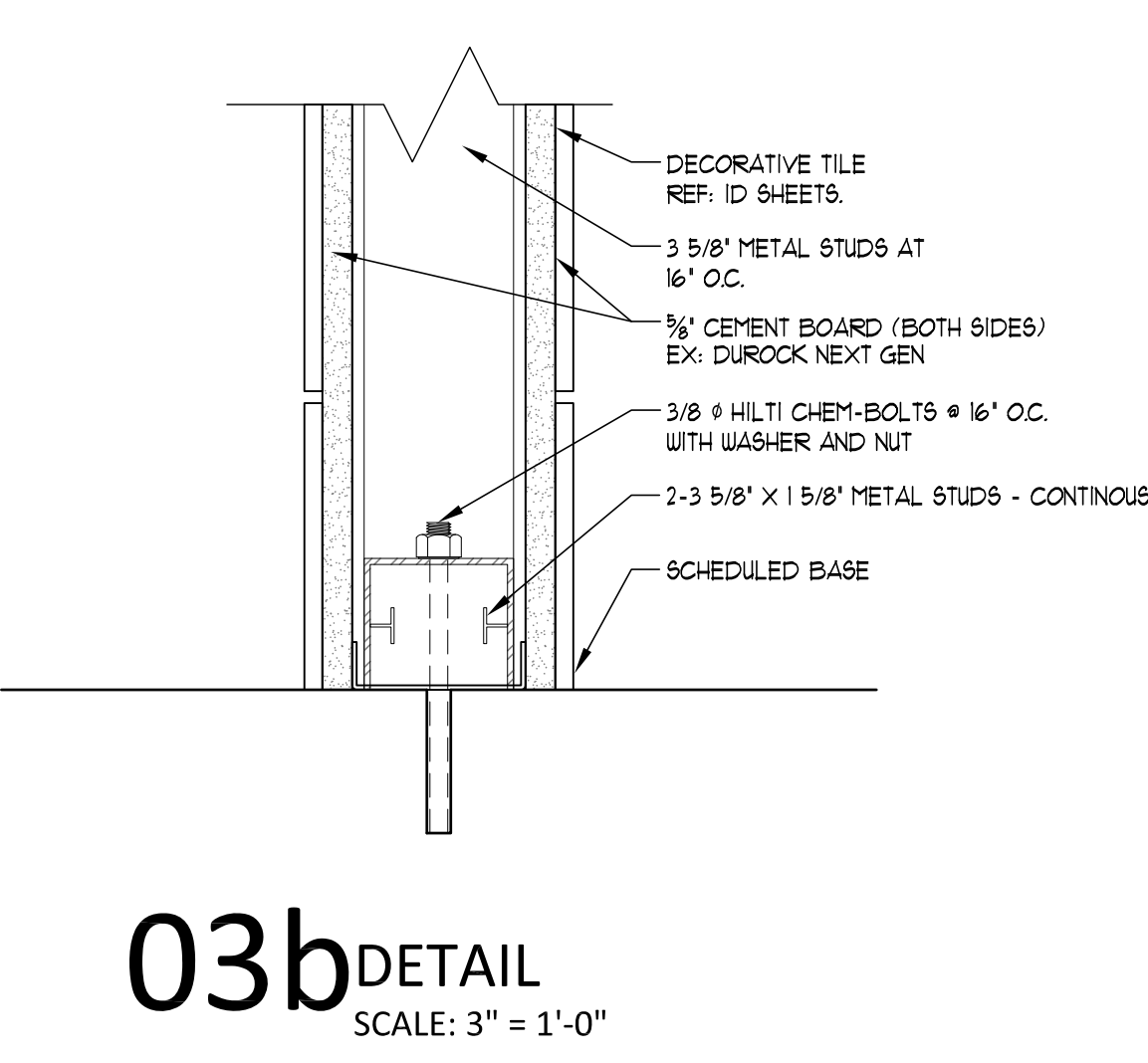
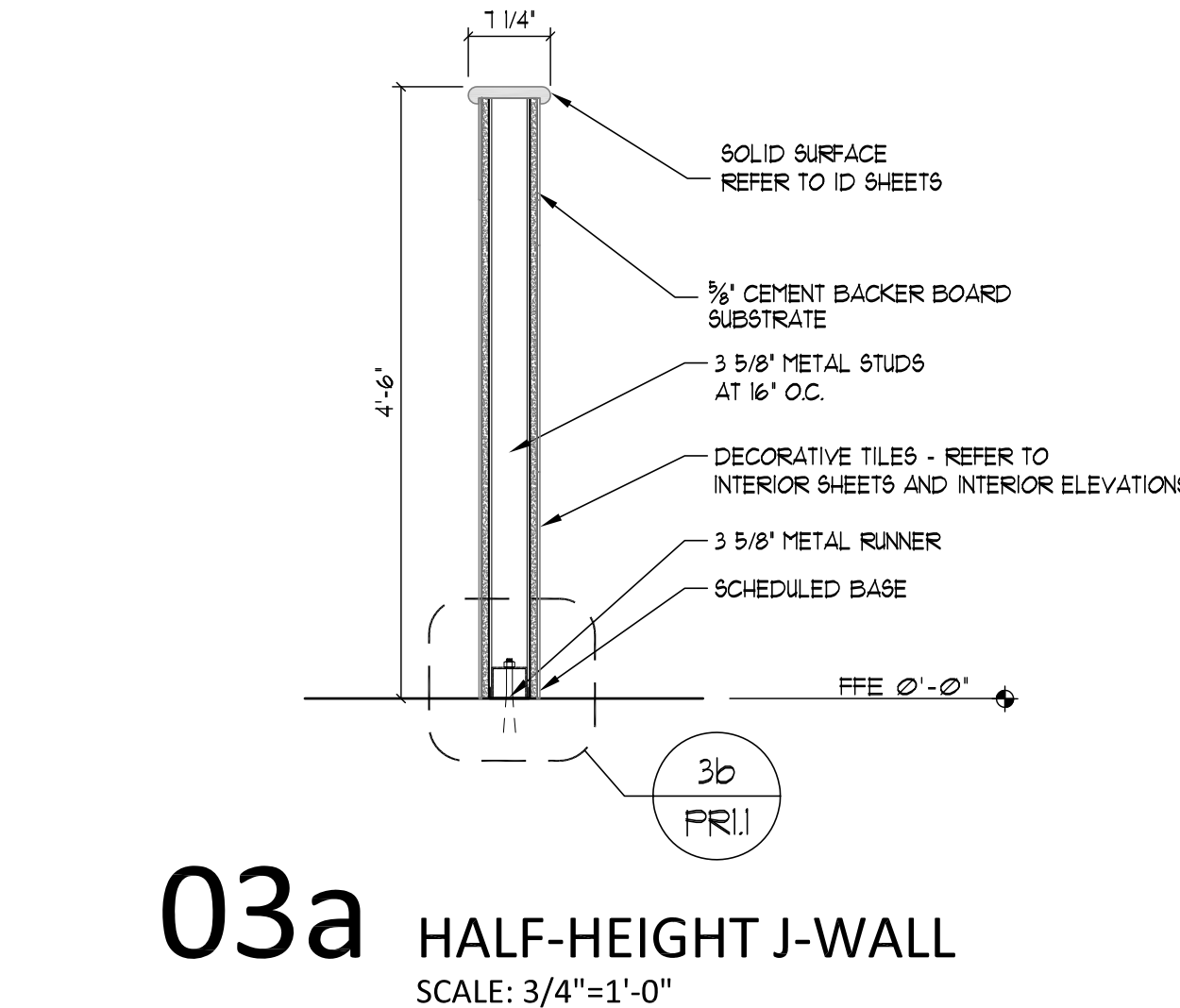
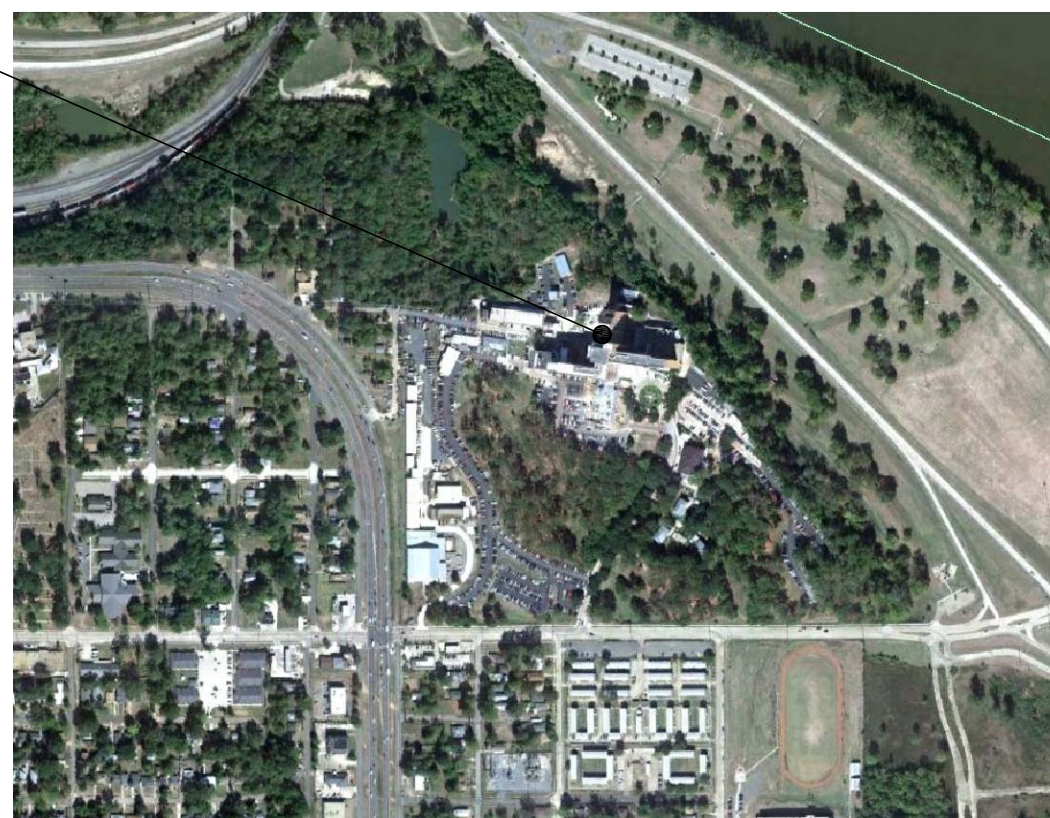
ELECTRICAL

- E0.1 GENERAL NOTES, ABBREVIATIONS, AND SYMBOLS LIST
- E1.N1 FIRST FLOOR - NORTH LIGHTING PLAN
- E1.N2 FIRST FLOOR - NORTH POWER PLAN
- E1.N3 FIRST FLOOR - NORTH SECURITY PLAN
- E1.E1 FIRST FLOOR - EAST LIGHTING PLAN
- E1.E2 FIRST FLOOR - EAST POWER PLAN
- E1.E3 FIRST FLOOR - EAST SECURITY PLAN
- E2.N1 FIRST FLOOR - NORTH ELECTRICAL DEMO
- E2.E1 FIRST FLOOR - EAST ELECTRICAL DEMO
- E4.1 ENLARGED ELECTRICAL ROOMS
- E5.1 ELECTRICAL DETAILS
- E6.0 ELECTRICAL DEMO PARTIAL ONE-LINE DIAGRAM
- E6.1 ELECTRICAL PARTIAL ONE-LINE DIAGRAMS
- E6.2 LOAD CALCULATIONS, EQUIPMENT, AND LIGHT FIXTURE SCHEDULES
- E6.N1 PANEL SCHEDULES - NORTH
- E6.E1 PANEL SCHEDULES - EAST

FIRE ALARM

- FA0.1 FIRE ALARM NOTES, DETAILS AND LEGEND
- FA1.N1 FIRST FLOOR - NORTH FIRE PROTECTION NEW PLAN
- FA1.E1 FIRST FLOOR - EAST FIRE PROTECTION NEW PLAN
- FA2.N1 FIRST FLOOR - NORTH FIRE PROTECTION DEMOLITION PLAN
- FA2.E1 FIRST FLOOR - EAST FIRE PROTECTION DEMOLITION PLAN

VICINITY MAP



Revisions:	Date:	CONSULTANTS:	 The Estopinal Group 820 Jordan Street, Suite 507 Shreveport, LA 71101 tel: 318-424-3700 fax: 318-424-3764	 A VETERAN OWNED COMPANY 3 EXECUTIVE COURT, UNIT 4 SOUTH BARRINGTON, IL 60010	Project Managers and Engineers:	Drawing Title PROJECT REFERENCE	Project Title RENOVATE ED & PRIMARY CARE Phase 1 & 2	Project Number 667-10-100	Office of Construction and Facilities Management
						Approved: Project Director	Location SHREVEPORT VAMC 510 EAST STONER AVE	Building Number 1N, 1E	Department of Veterans Affairs
							Date 01/09/13	Drawing Number PRI.1 Dwg. 2 of 112	
							Checked JAH	Drawn CSH	