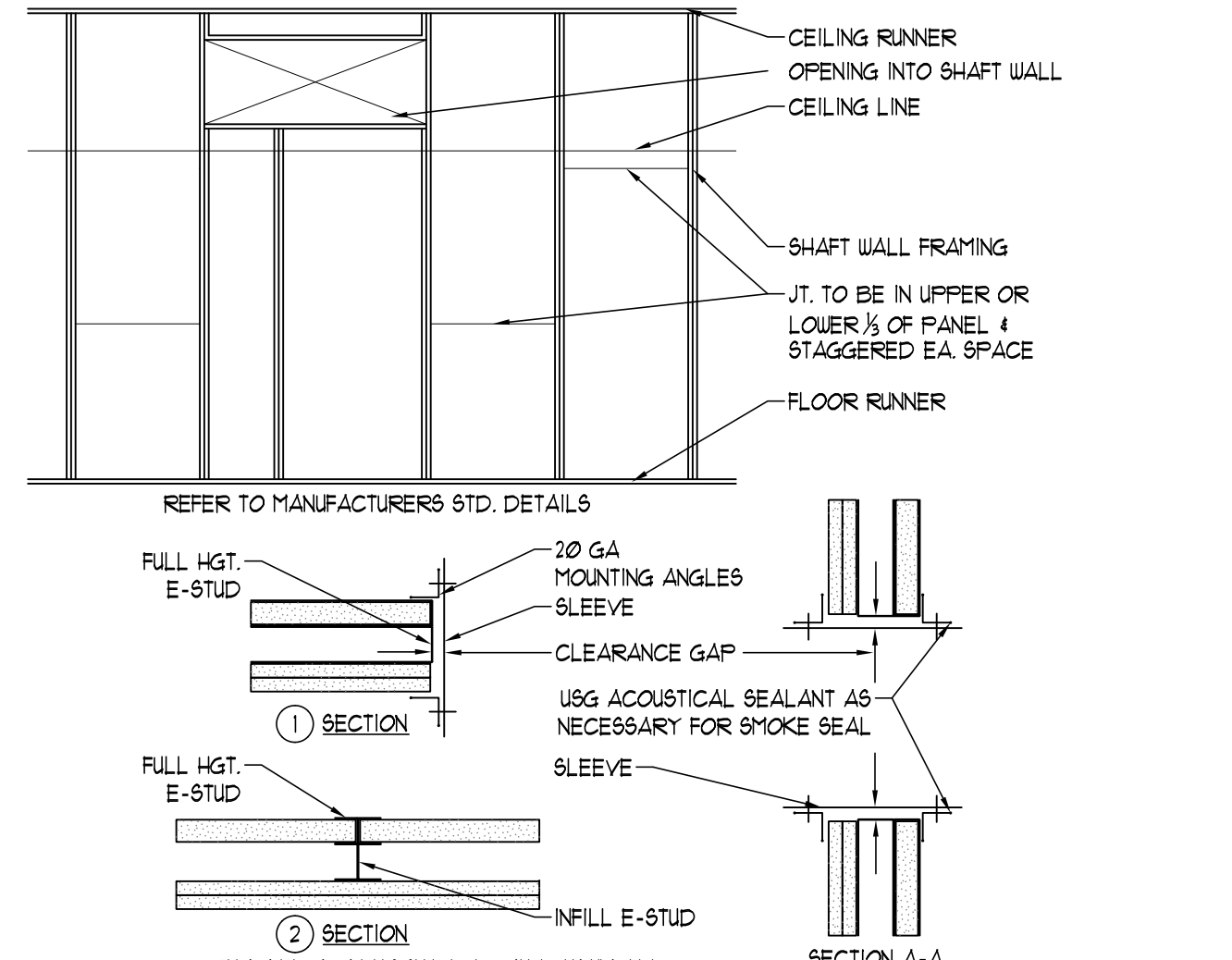
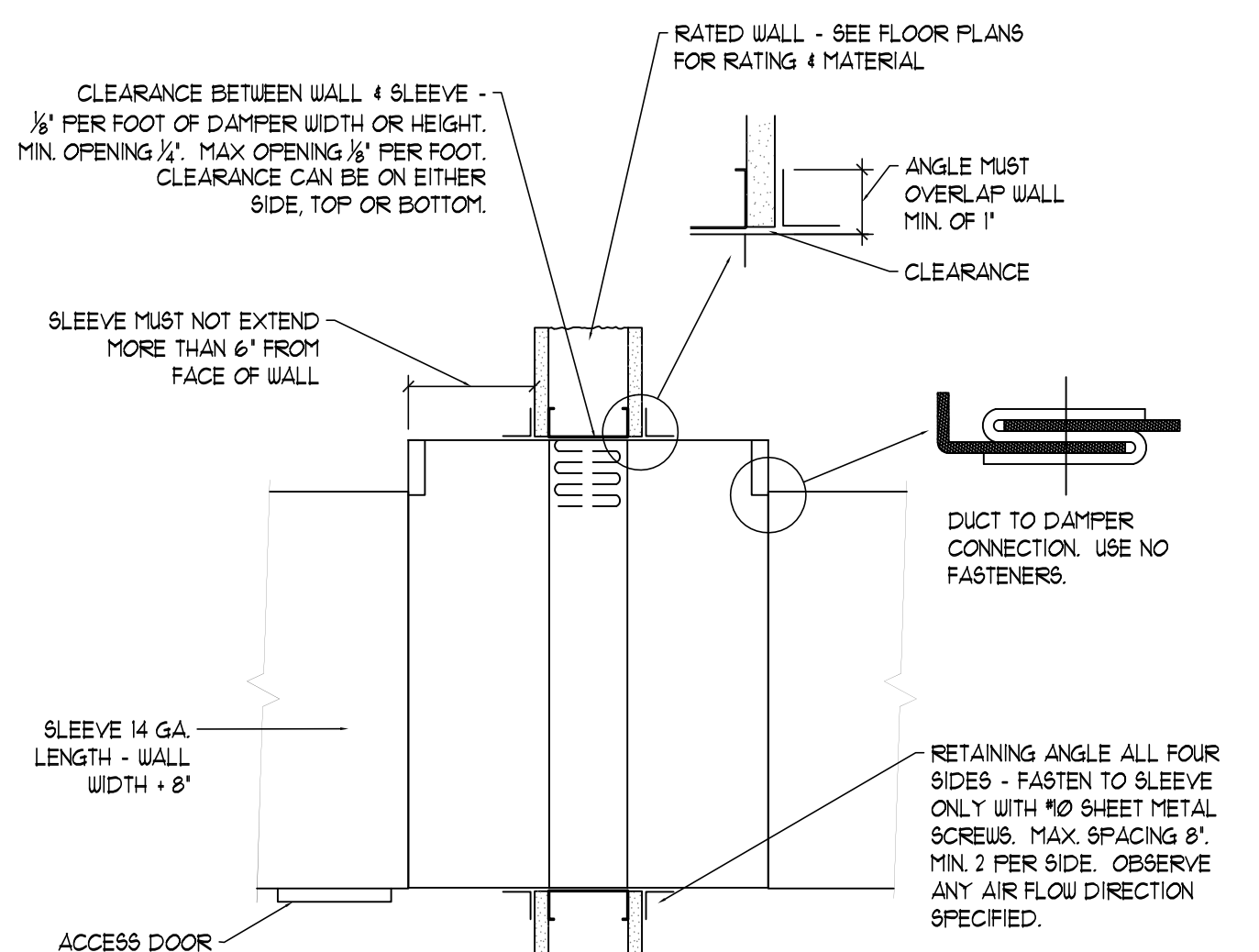


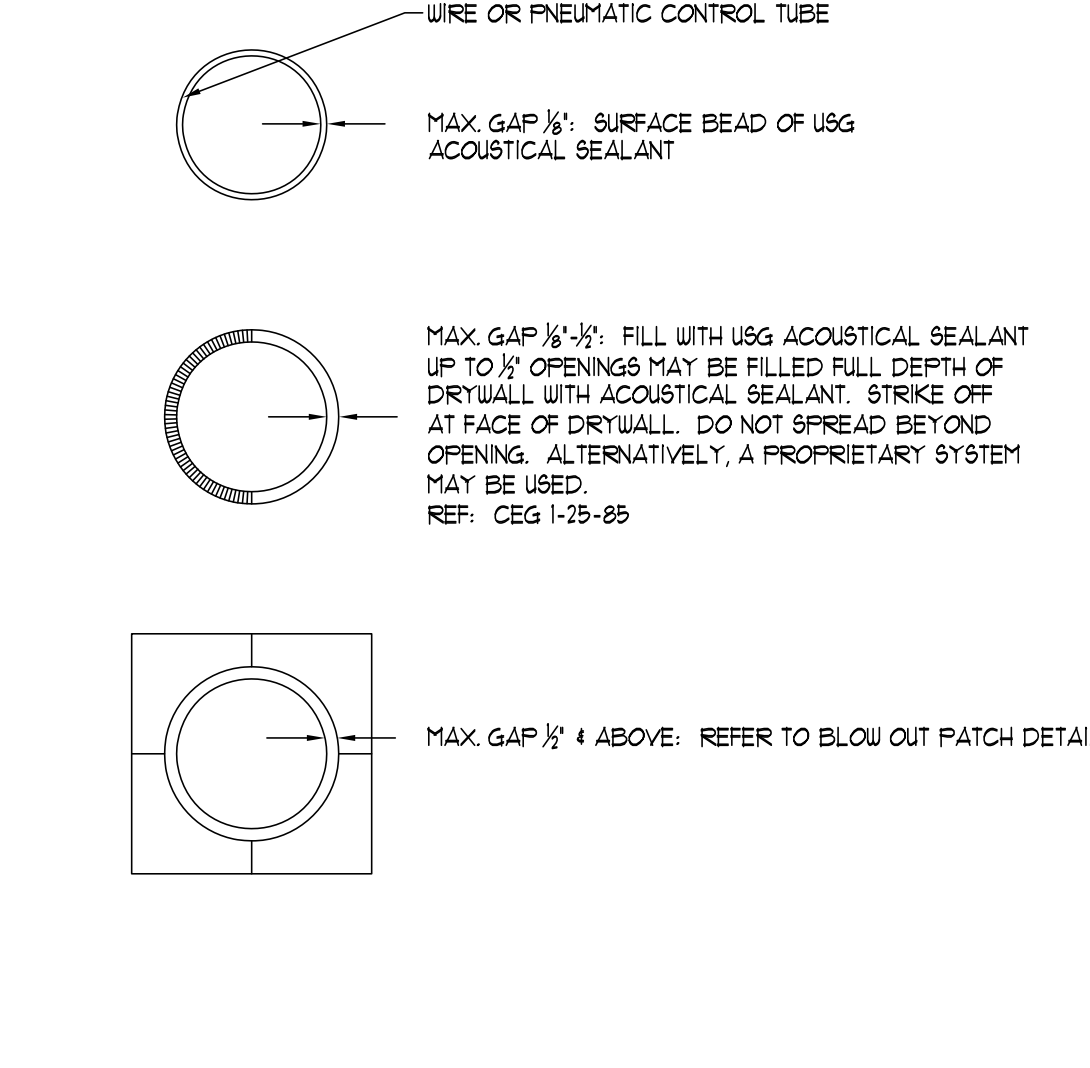
04 FIRE DAMPER
SCALE: NTS



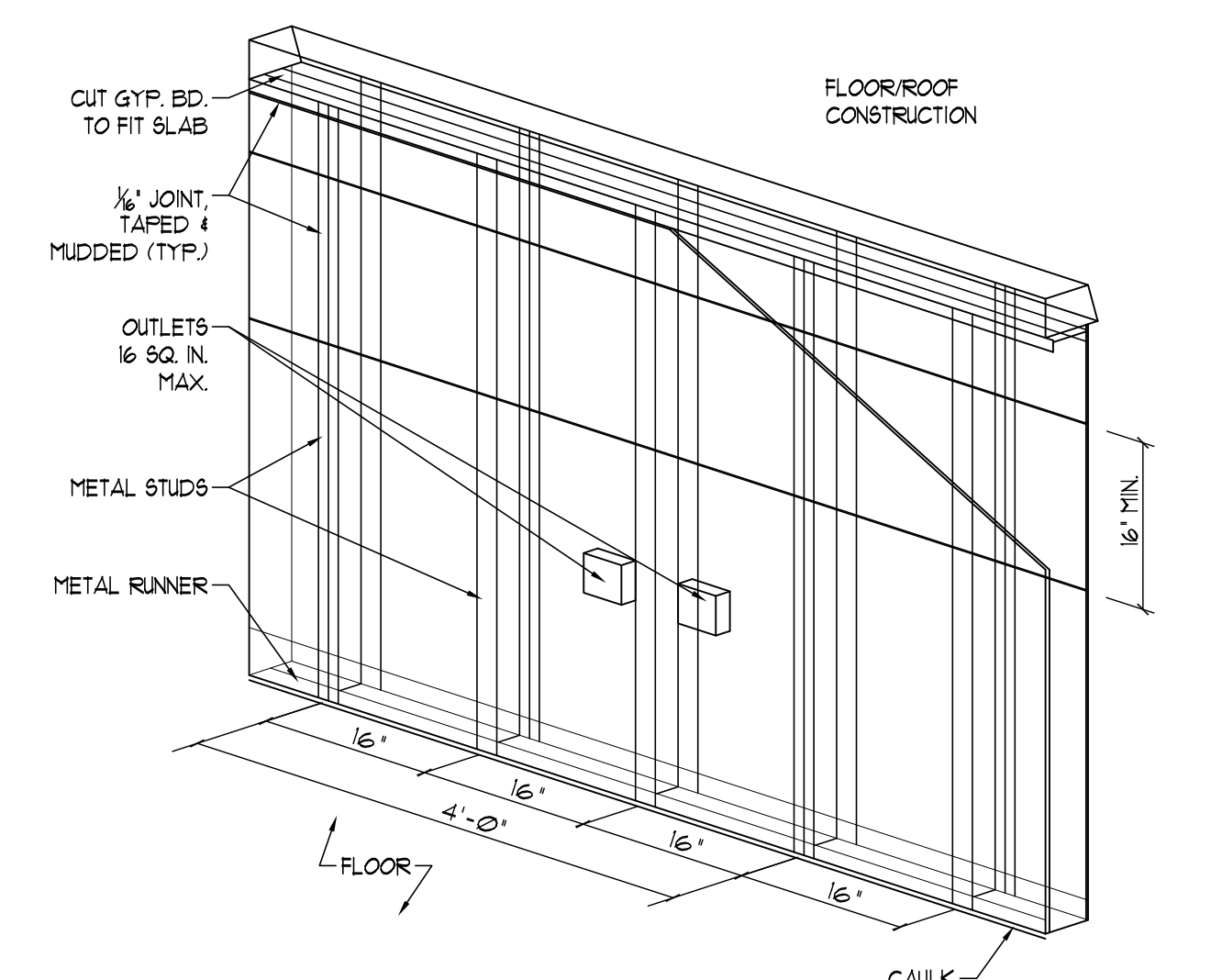
09 SHAFT WALL - DUCT PENETRATION
SEE DAMPER DETAIL - 2HR. OR 1HR.
SCALE: NTS



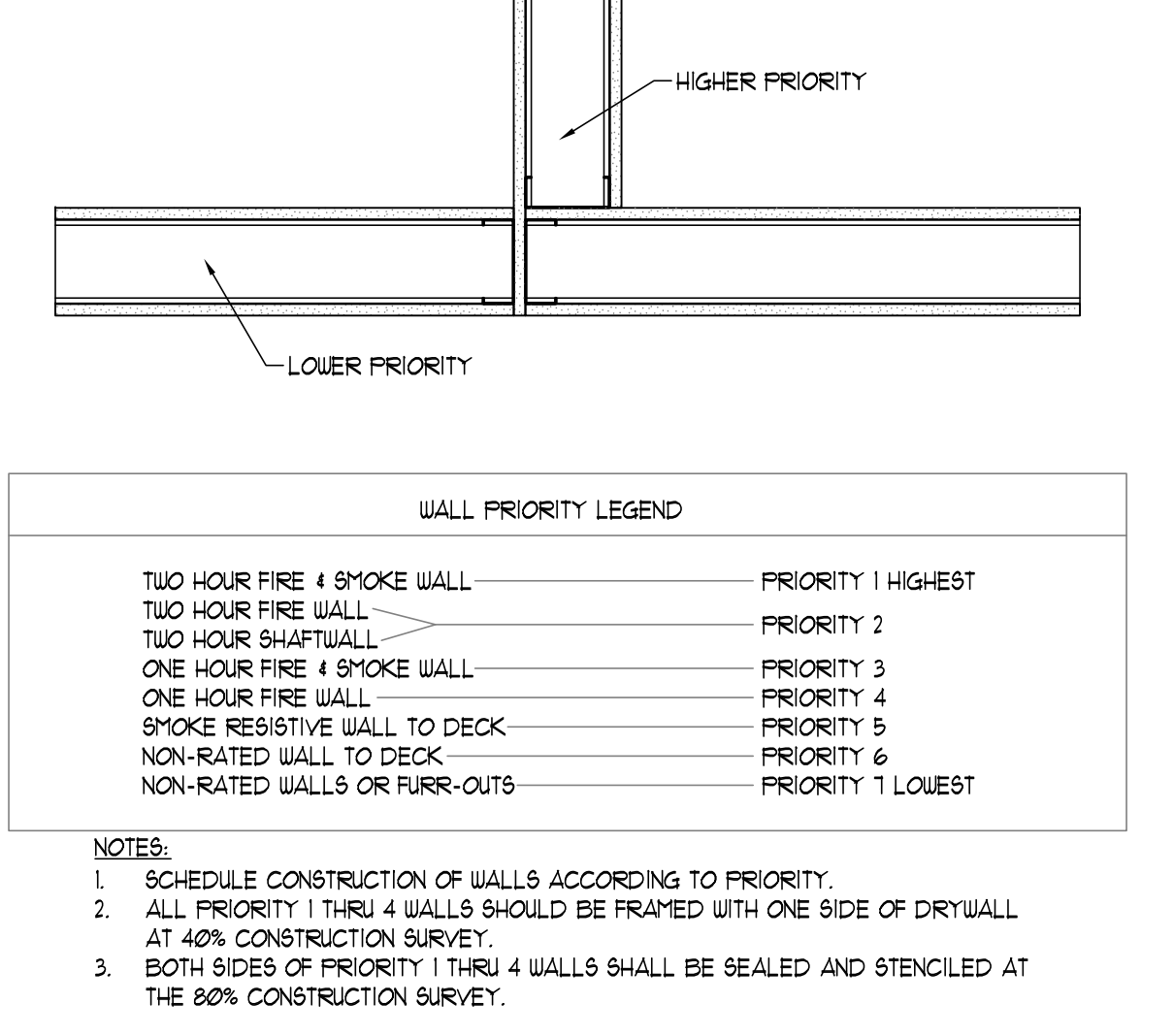
03 FIRE DAMPER



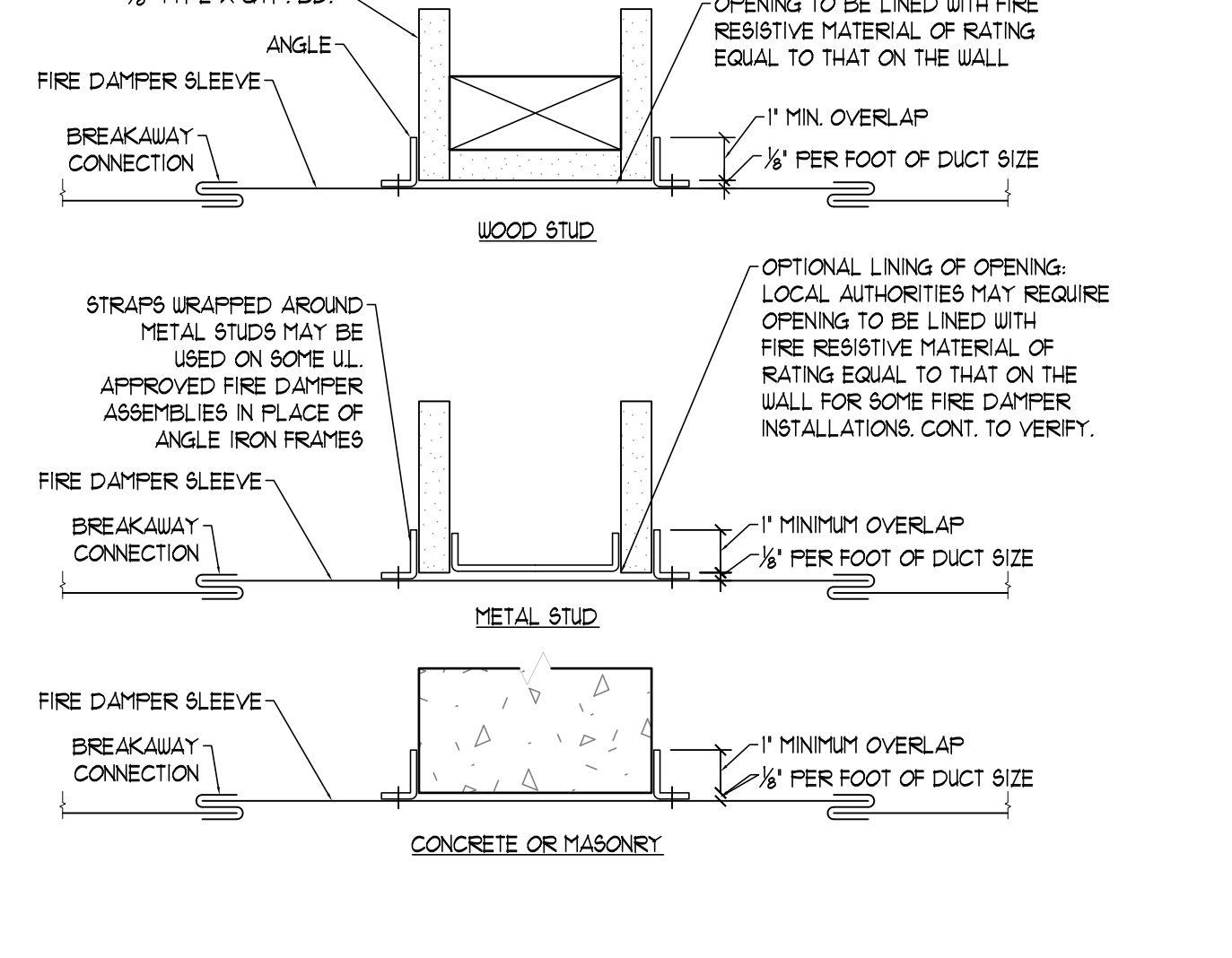
11 TYPICAL SOUND/SMOKE RESISTIVE PENETRATION REQUIREMENTS



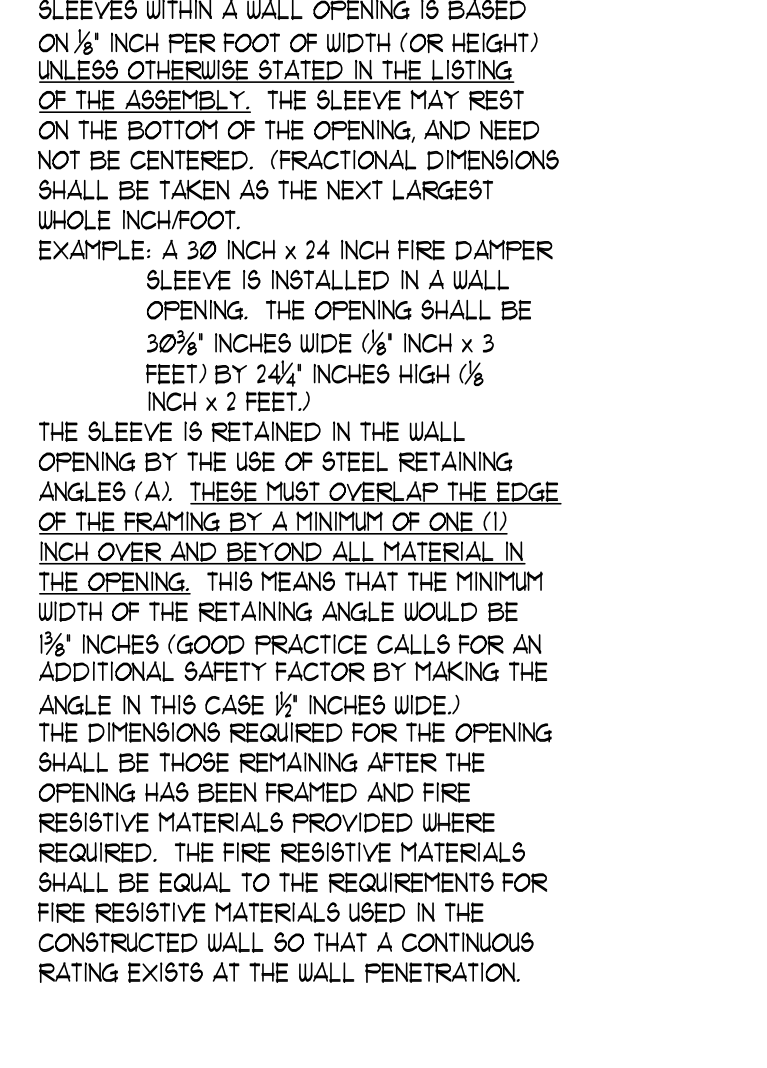
08 TYPICAL WALL ISOMETRIC



05 WALL PRIORITY LEGEND



02 FRAMING REQUIREMENTS FOR FIRE & FIRE/SMOKE DAMPER



01 FIRE & FIRE/SMOKE DAMPERS

[illegible]