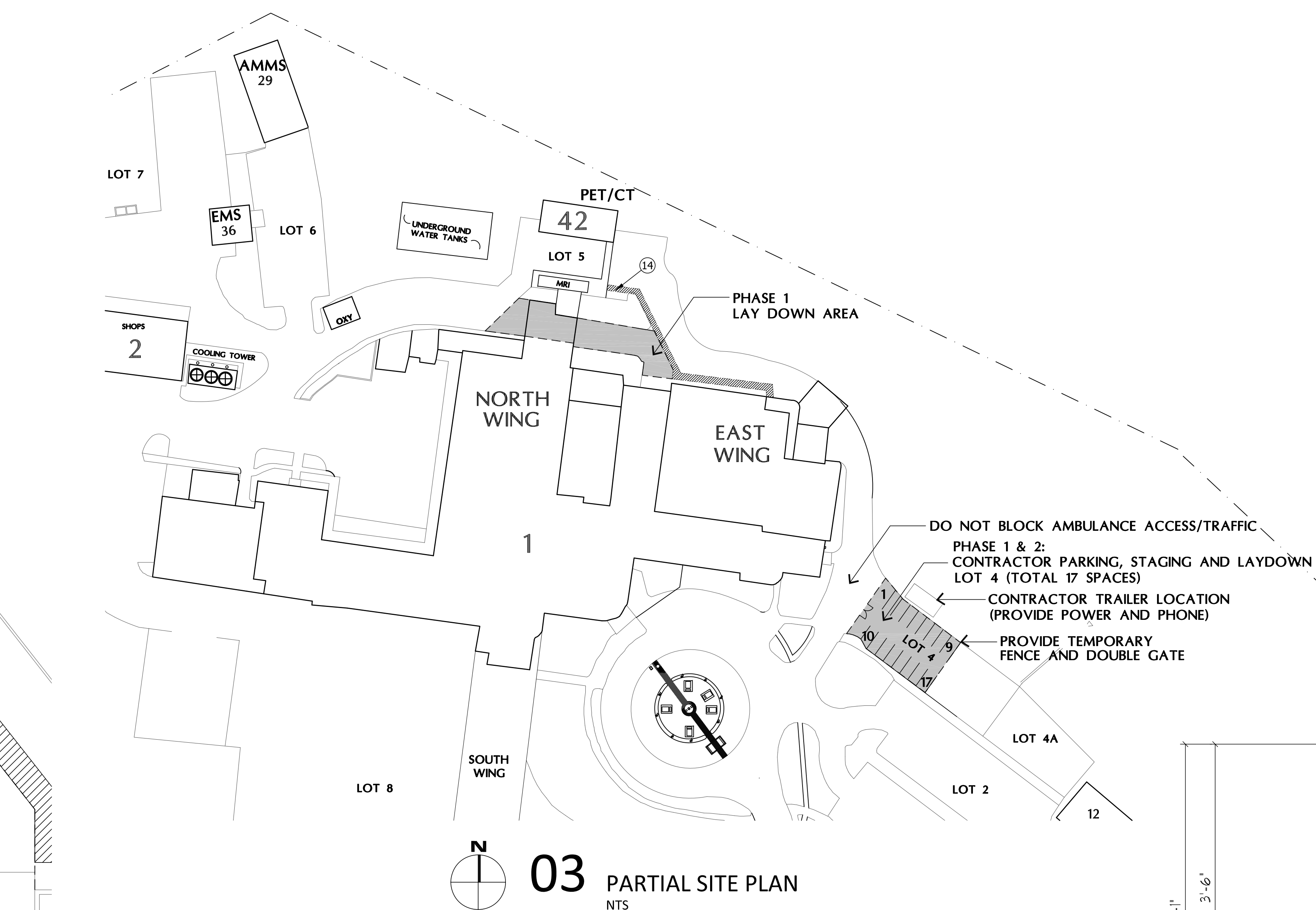
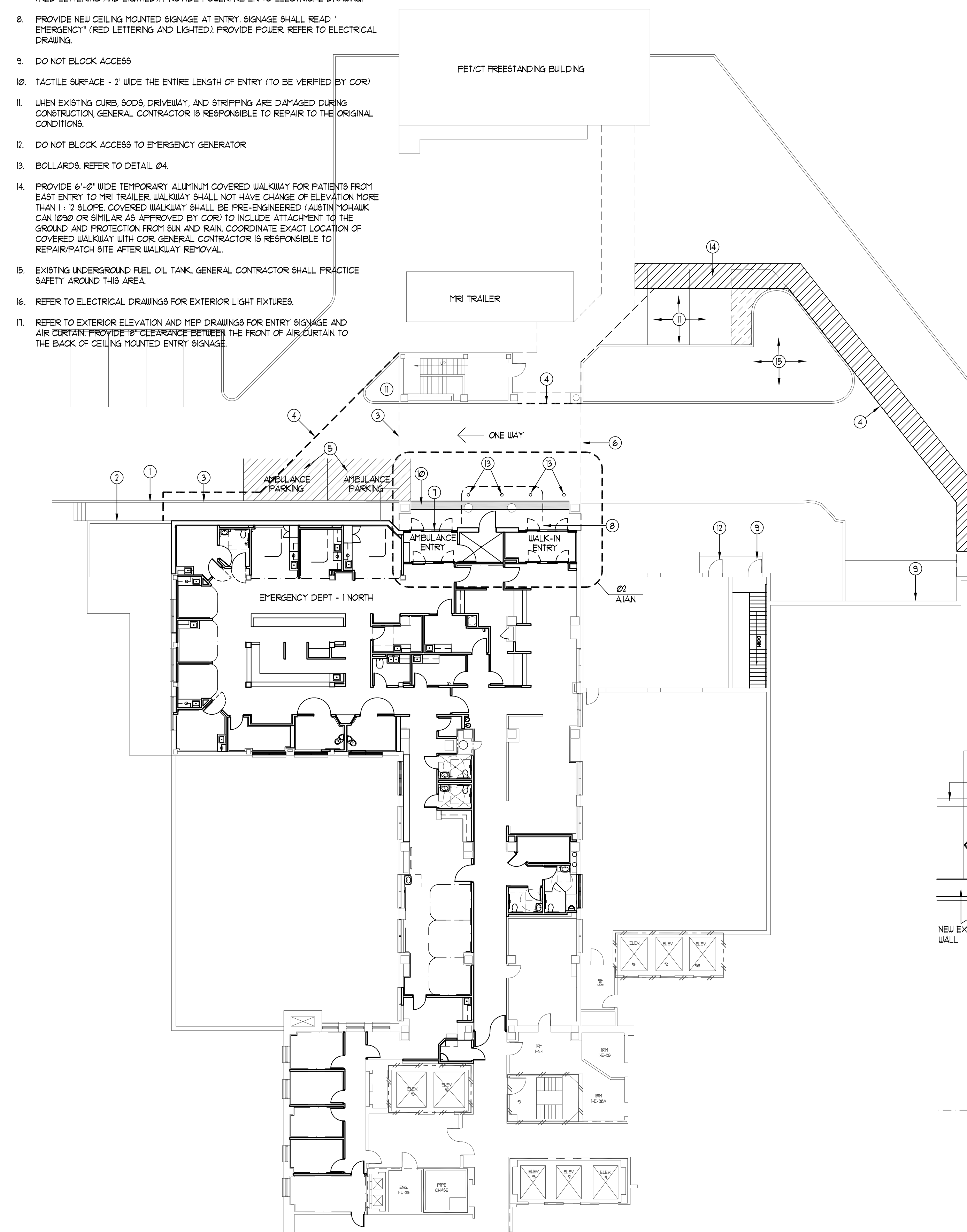
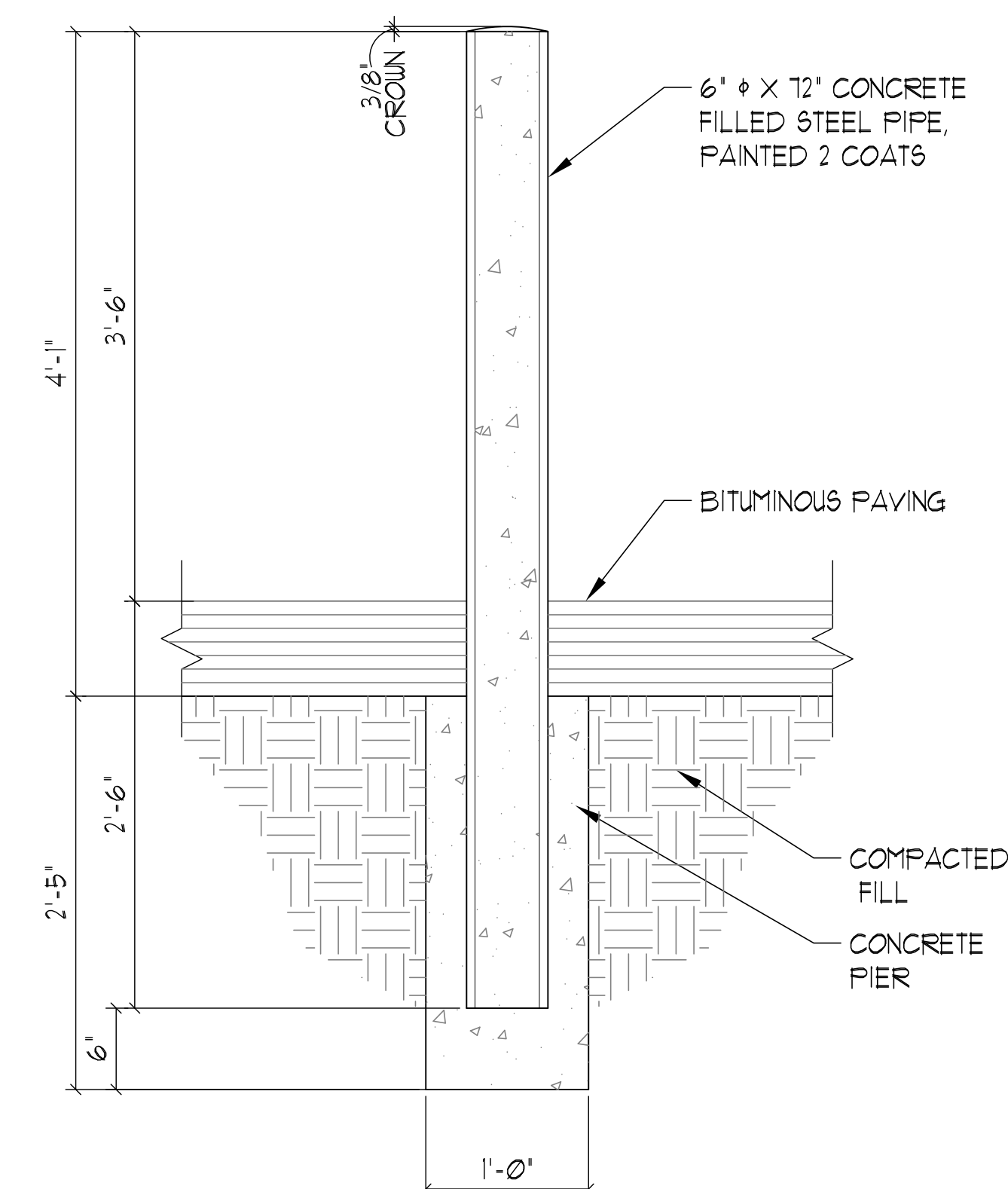
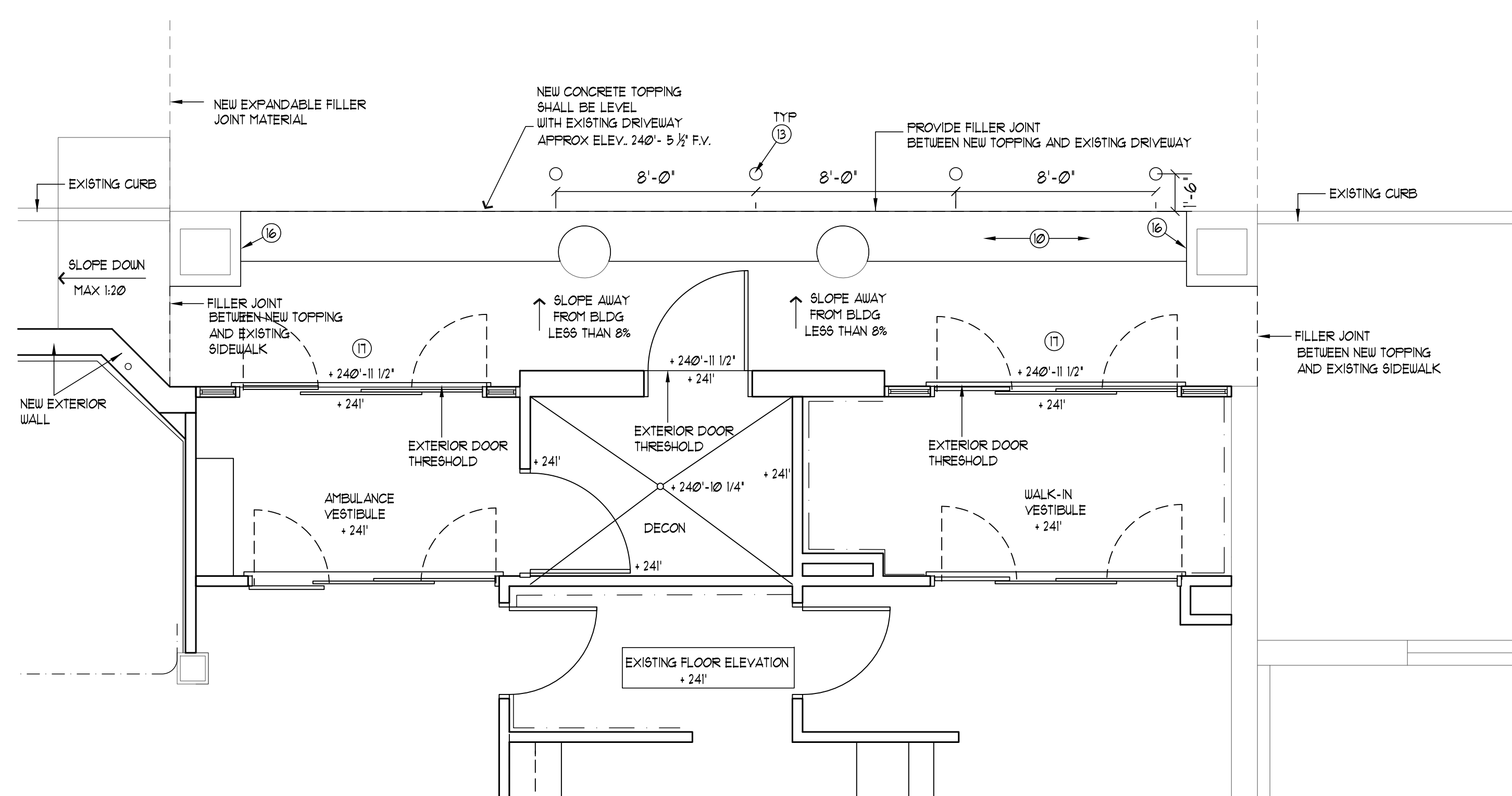


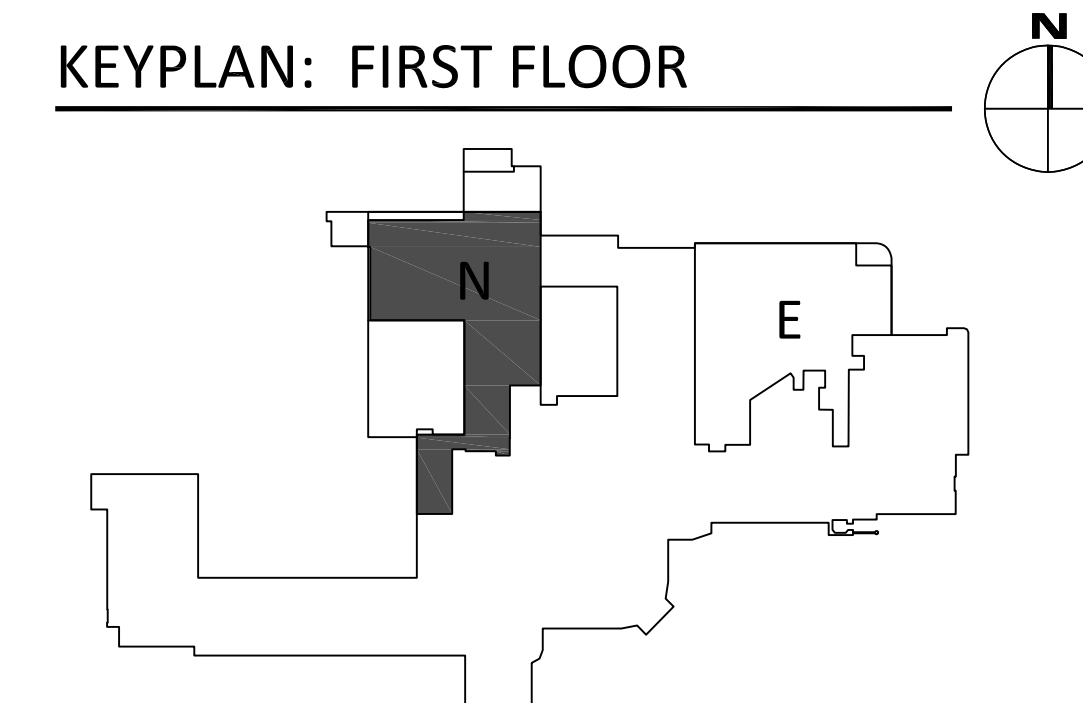
1. SAND AND REPAINT EXISTING HANDRAIL AND GUARD RAIL.
2. EXISTING BRICK WALL TO REMAIN.
3. REMOVE EXISTING CALLING MATERIAL BETWEEN SIDEWALK CURB AND DRIVEWAY. PROVIDE EXPANDABLE JOINT FILLER MATERIAL.
4. PROVIDE TEMPORARY CONSTRUCTION FENCE AND GATE.
5. NEW STRIPING FOR AMBULANCE PARKING.
6. PROVIDE RED LIGHTED SIGNAGE "EMERGENCY" LETTERING MOUNTED ON EXISTING BRICK BUILDING ABOVE DRIVEWAY. GC IS TO PROVIDE MOUNTS AND POWER.
7. PROVIDE CEILING MOUNTED SIGNAGE AT ENTRY: SIGNAGE SHALL READ "AMBULANCE" (RED LETTERING AND LIGHTED) PROVIDE POWER REFER TO ELECTRICAL DRAWING.
8. PROVIDE NEW CEILING MOUNTED SIGNAGE AT ENTRY: SIGNAGE SHALL READ "EMERGENCY" (RED LETTERING AND LIGHTED) PROVIDE POWER REFER TO ELECTRICAL DRAWING.
9. DO NOT BLOCK ACCESS
10. TACTILE SURFACE - 2' WIDE THE ENTIRE LENGTH OF ENTRY (TO BE VERIFIED BY COR)
11. WHEN EXISTING CURB, SODS, DRIVEWAY, AND STRIPINGS ARE DAMAGED DURING CONSTRUCTION, GENERAL CONTRACTOR IS RESPONSIBLE TO REPAIR TO THE ORIGINAL CONDITIONS.
12. DO NOT BLOCK ACCESS TO EMERGENCY GENERATOR
13. BOLLARDS: REFER TO DETAIL 04.
14. PROVIDE 6'-0" WIDE TEMPORARY ALUMINUM COVERED WALKWAY FOR PATIENTS FROM EAST ENTRY TO THE TRAILER. WALKWAY SHALL NOT HAVE CHANGE OF ELEVATION MORE THAN 1/8" SLOPE. COVERED WALKWAY SHALL BE PRE-ENGINEERED (ASTM 1060) CAN 1030 OR SIMILAR AS APPROVED BY COR) TO INCLUDE ATTACHMENT TO THE GROUND AND PROTECTION FROM SUN AND RAIN. COORDINATE EXACT LOCATION OF COVERED WALKWAY WITH COR. GENERAL CONTRACTOR IS RESPONSIBLE TO REPAIR/PATCH SITE AFTER WALKWAY REMOVAL.
15. EXISTING UNDERGROUND FUEL OIL TANK. GENERAL CONTRACTOR SHALL PRACTICE SAFETY AROUND THIS AREA.
16. REFER TO ELECTRICAL DRAWINGS FOR EXTERIOR LIGHT FIXTURES.
17. REFER TO EXISTING ELEVATION AND REF DRAWINGS FOR ENTRY SIGNAGE AND AIR CURTAIN. PROVIDE BY CLEARANCE BETWEEN THE FRONT OF AIR CURTAIN TO THE BACK OF CEILING MOUNTED ENTRY SIGNAGE.



03 PARTIAL SITE PLAN



04 PIPE BOLLARD DETAIL



KEYPLAN: FIRST FLOOR

<div> <div> <div>Revisions:</div> <div></div> </div> <div> <div>Date</div> <div></div> </div> </div>			<div>CONSULTANTS:</div> <div> <div>  <div> <div>The Estopinal Group</div> <div>ARCHITECTURE ENGINEERING INTERIORS</div> </div> </div> <div> <div>820 Jordan Street, Suite 507</div> <div>tel. 318.424.3700</div> </div> <div> <div>Shreveport, LA 71101</div> <div>fax 318.424.3764</div> </div> </div> <td data-kind="ghost"></td> <td data-kind="ghost"></td> <td data-cs="3" data-kind="parent"> <div>PROJECT MANAGERS AND ENGINEERS:</div> <div> <div>  <div> <div>A VETERAN OWNED COMPANY</div> </div> </div> <div> <div>3 EXECUTIVE COURT, UNIT 4</div> <div>SOUTH BARRINGTON, IL 60010</div> </div> </div> <td data-kind="ghost"></td><td data-kind="ghost"></td><td data-cs="3" data-kind="parent"> <div> <div>Drawing Title</div> <div>ARCHITECTURAL SITE PLAN - I NORTH</div> </div> <div> <div>Approved: Project Director</div> <div></div> </div> </td><td data-kind="ghost"></td><td data-kind="ghost"></td><td data-cs="3" data-kind="parent"> <div> <div>Project Title</div> <div>RENOVATE ED # PRIMARY CARE</div> </div> <div> <div>Building Number</div> <div>IN</div> </div> </td><td data-kind="ghost"></td><td data-kind="ghost"></td><td data-cs="3" data-kind="parent"> <div> <div>Project Number</div> <div>667-10-100</div> </div> <div> <div>Drawing Number</div> <div>A.I.NO</div> </div> </td><td data-kind="ghost"></td><td data-kind="ghost"></td><td data-cs="3" data-kind="parent"> <div> <div>Location</div> <div>SHREVEPORT VAMC</div> </div> <div> <div>Date</div> <div>01/09/13</div> </div> </td><td data-kind="ghost"></td><td data-kind="ghost"></td><td data-cs="3" data-kind="parent"> <div> <div>Drawn</div> <div>CSH</div> </div> <div> <div>Checked</div> <div>JAH</div> </div> </td><td data-kind="ghost"></td><td data-kind="ghost"></td><td data-cs="3" data-kind="parent"> <div> <div>Department of Veterans Affairs</div> </div> </td><td data-kind="ghost"></td><td data-kind="ghost"></td></td>			<div>PROJECT MANAGERS AND ENGINEERS:</div> <div> <div>  <div> <div>A VETERAN OWNED COMPANY</div> </div> </div> <div> <div>3 EXECUTIVE COURT, UNIT 4</div> <div>SOUTH BARRINGTON, IL 60010</div> </div> </div> <td data-kind="ghost"></td> <td data-kind="ghost"></td> <td data-cs="3" data-kind="parent"> <div> <div>Drawing Title</div> <div>ARCHITECTURAL SITE PLAN - I NORTH</div> </div> <div> <div>Approved: Project Director</div> <div></div> </div> </td> <td data-kind="ghost"></td> <td data-kind="ghost"></td> <td data-cs="3" data-kind="parent"> <div> <div>Project Title</div> <div>RENOVATE ED # PRIMARY CARE</div> </div> <div> <div>Building Number</div> <div>IN</div> </div> </td> <td data-kind="ghost"></td> <td data-kind="ghost"></td> <td data-cs="3" data-kind="parent"> <div> <div>Project Number</div> <div>667-10-100</div> </div> <div> <div>Drawing Number</div> <div>A.I.NO</div> </div> </td> <td data-kind="ghost"></td> <td data-kind="ghost"></td> <td data-cs="3" data-kind="parent"> <div> <div>Location</div> <div>SHREVEPORT VAMC</div> </div> <div> <div>Date</div> <div>01/09/13</div> </div> </td> <td data-kind="ghost"></td> <td data-kind="ghost"></td> <td data-cs="3" data-kind="parent"> <div> <div>Drawn</div> <div>CSH</div> </div> <div> <div>Checked</div> <div>JAH</div> </div> </td> <td data-kind="ghost"></td> <td data-kind="ghost"></td> <td data-cs="3" data-kind="parent"> <div> <div>Department of Veterans Affairs</div> </div> </td> <td data-kind="ghost"></td> <td data-kind="ghost"></td>			<div> <div>Drawing Title</div> <div>ARCHITECTURAL SITE PLAN - I NORTH</div> </div> <div> <div>Approved: Project Director</div> <div></div> </div>			<div> <div>Project Title</div> <div>RENOVATE ED # PRIMARY CARE</div> </div> <div> <div>Building Number</div> <div>IN</div> </div>			<div> <div>Project Number</div> <div>667-10-100</div> </div> <div> <div>Drawing Number</div> <div>A.I.NO</div> </div>			<div> <div>Location</div> <div>SHREVEPORT VAMC</div> </div> <div> <div>Date</div> <div>01/09/13</div> </div>			<div> <div>Drawn</div> <div>CSH</div> </div> <div> <div>Checked</div> <div>JAH</div> </div>			<div> <div>Department of Veterans Affairs</div> </div>		
--	--	--	--	--	--	--	--	--	---	--	--	---	--	--	---	--	--	--	--	--	---	--	--	--	--	--