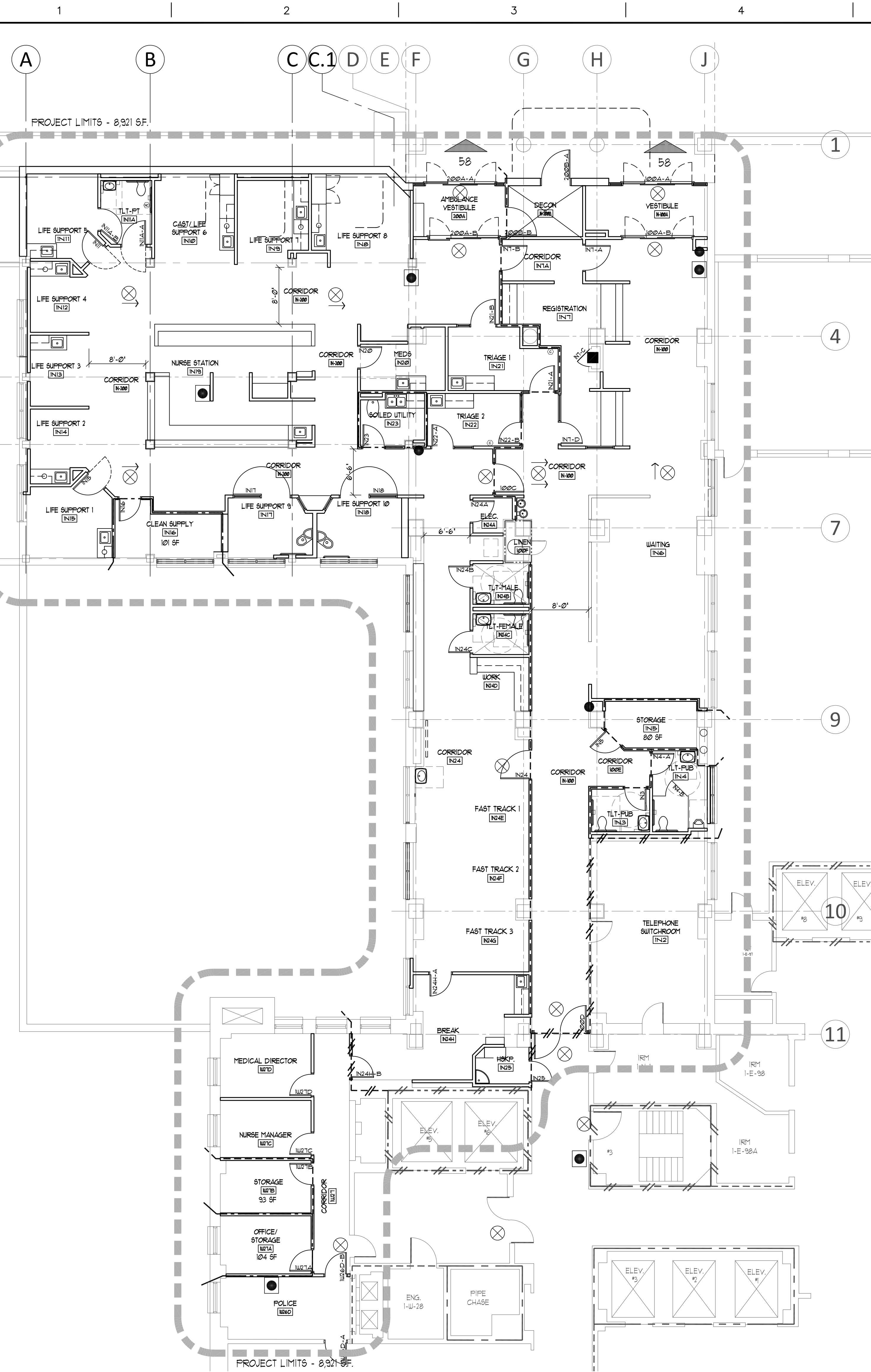


three inches = one foot
one and one half inches = one foot
one inch = one foot
three quarters inch = one foot
one half inch = one foot
three eighths inch = one foot
one quarter inch = one foot
one eighth inch = one foot

PROJECTS\ASH\015\CD ARCH\A-ASH-015-AD101-Life Safety Plan-TN.dwg 1-08-13 02:59:08 PM jatharris



01 PHASE 1
LIFE SAFETY COMPOSITE - FIRST FLOOR NORTH
SCALE: 1/8"=1'-0"

LIFE SAFETY PLAN GENERAL NOTES:

- ALL REQUIRED EXITS SHALL REMAIN OPEN DURING THE DURATION OF THE PROJECT AND TO BE KEPT CLEAR OF EQUIPMENT, MATERIALS, DEBRIS ETC.
- ALL REQUIRED EXIT EGRESS WIDTHS SHALL NOT BE DECREASED DURING THE DURATION OF THE PROJECT AND TO BE KEPT CLEAR OF EQUIPMENT, MATERIALS, DEBRIS ETC.
- REQUIRED TRAVEL DISTANCE BETWEEN FIRE EXTINGUISHERS SHALL BE MAINTAINED AT ALL TIMES. THE CONTRACTOR SHALL PROVIDE TEMPORARY FIRE EXTINGUISHER WHICH ARE PROPERLY MARKED WHEN TRAVEL DISTANCE IS INTERRUPTED BY THE CONSTRUCTION PROCESS.
- THE CONTRACTOR SHALL BE RESPONSIBLE FOR MAINTAINING ANY EXISTING FIRE PROTECTION OR ALARM SYSTEM. THE CONTRACTOR SHALL NOTIFY THE OWNER AND LOCAL FIRE OFFICIAL IN WRITING IF ANY PART OF THE FIRE PROTECTION OR FIRE ALARM SYSTEM IS TO BE INTERRUPTED.
- THE CONTRACTOR SHALL BE RESPONSIBLE FOR PROPERLY MARKING ANY AND ALL TEMPORARY EXITS.
- THE CONTRACTOR SHALL BE RESPONSIBLE FOR MAINTAINING THE EMERGENCY EXITS SIGNAGE AND LIGHTING SYSTEM INCLUDING BUT NOT LIMITED TO TEMPORARY SIGNAGE AND LIGHTING AS REQUIRED BY CODE OR LOCAL BUILDING AND FIRE OFFICIALS.
- THE CONTRACTOR SHALL BE RESPONSIBLE FOR THE RESTORATION OF ANY RATED ASSEMBLY DISTURBED BY THE CONSTRUCTION PROCESS, TO ITS ORIGINAL INTEGRITY.

BUILDING CLASSIFICATION

USE:	HOSPITAL (EXISTING)	
OCCUPANCY CLASSIFICATION:	GROUP I-2	
TYPE OF CONSTRUCTION:	TYPE II-A (IBC) TYPE I-22 (NFPA)	HEIGHT: UL AREA: UL
BUILDING ELEMENTS - FIRE RESISTANT REQUIREMENTS		
FIRE WALLS	2 HR	ASSEMBLY
STRUCTURAL FRAME	2 HR	UL19
BEARING WALLS EXTERIOR	2 HR	UL19
INTERIOR	1 HR	UL19
NON-BEARING WALLS EXTERIOR	1 HR	AS NOTED ON PLAN
INTERIOR	1 HR	AS NOTED ON PLAN
FLOOR CONSTRUCTION	2 HR	UL D780
ROOF CONSTRUCTION	2 HR	UL F308
PROJECT SQUARE FOOTAGE NEW AND RENOVATION		
FIRST FLOOR - RENOVATION	1,369 SF.	
FIRST FLOOR - NEW CONSTRUCTION	892 SF.	
TOTAL	2,261 SF.	
AUTOMATIC SPRINKLER SYSTEM:		
ALL EXISTING HOSPITAL AREAS ARE CONSIDERED FULLY SPRINKLERED AND ALL AREAS OF NEW ADDITION SHALL BE FULLY SPRINKLERED.		

WALL RATINGS LEGEND:

- NOTES:
- RATED WALL DESIGNATIONS ARE DRAWN THROUGH OPENINGS TO INDICATE THAT THE WALL CONSTRUCTION ABOVE THE OPENING HAS THE SAME RATING AS THE CONSTRUCTION ON EITHER SIDE OF OPENING.
 - THE CONTRACTOR MUST SUBMIT DOCUMENTATION WHEN RATED WALL ASSEMBLY HAS BEEN TESTED AND APPROVED BY AGENCY OTHER THAN UL.
 - THE CONTRACTOR SHALL VERIFY EXISTING RATED WALLS. IF DEFICIENCIES ARE FOUND, THE CONTRACTOR SHALL UPGRADE WALL RATINGS AS ON LIFE SAFETY PLAN AND A/E.
- NON RATED SMOKE PARTITION
- DOOR AND FRAME - NOT RATED
- DAMPERS - NOT REQUIRED
- PENETRATIONS/PERIMETER - SEALED
- EXTEND AT LEAST ONE LAYER OF GYPSUM WALL BOARD TO DECK ABOVE OR ENTIRE WALL CONSTRUCTION TO SMOKE RESISTANT CORRIDOR CEILING
- ONE HOUR FIRE BARRIER
- DOOR AND FRAME - 45 MIN. RATING
- DAMPERS - FIRE - SEE MECH CODE
- PENETRATIONS/PERIMETER - FIRE CALKED
- EXTEND ENTIRE WALL CONSTRUCTION TO DECK ABOVE
- TWO HOUR FIRE BARRIER
- DOOR AND FRAME - 90 MIN. RATING
- DAMPERS - FIRE - SEE MECH CODE
- PENETRATIONS/PERIMETER - FIRE CALKED
- EXTEND ENTIRE WALL CONSTRUCTION TO DECK ABOVE
- FIRE/SMOKE BARRIER
- DOOR AND FRAME - 90 MIN. RATING
- DAMPERS - FIRE AND SMOKE - SEE MECH CODE
- PENETRATIONS/PERIMETER - SEALED
- EXTEND ENTIRE WALL CONSTRUCTION TO DECK ABOVE
- ONE HOUR FIRE/SMOKE BARRIER
- DOOR AND FRAME - 45 MIN. RATING
- DAMPERS - FIRE AND SMOKE - SEE MECH CODE
- PENETRATIONS/PERIMETER - FIRE CALKED
- EXTEND ENTIRE WALL CONSTRUCTION TO DECK ABOVE
- TWO HOUR FIRE/SMOKE BARRIER
- DOOR AND FRAME - 90 MIN. RATING
- DAMPERS - FIRE AND SMOKE - SEE MECH CODE
- PENETRATIONS/PERIMETER - FIRE CALKED
- EXTEND ENTIRE WALL CONSTRUCTION TO DECK ABOVE

LIFE SAFETY PLAN SYMBOLS:

- EGRESS DIRECTION OF EXIT (INCHES)
- EXIT SIGN/EGRESS DIRECTION
- FIRE EXTINGUISHER IN FIRE HOSE CABINET
- FIRE EXTINGUISHER IN RECESSED FIRE EXTINGUISHER CABINET
- PULL STATION

NOTE: REFER TO FIRE PROTECTION PLAN FOR LOCATIONS OF FIRE ALARMS AND SMOKE DETECTORS.

CODE INFORMATION: LOUISIANA

PROJECT DESCRIPTION

THE PROJECT CONSISTS OF THE FOLLOWING:

PHASE 1 - 1 NORTH

1. RENOVATE EXISTING 1 NORTH WHERE PRIMARY CARE WHITE TEAM IS CURRENTLY LOCATED TO ACCOMMODATE EMERGENCY DEPARTMENT. RENOVATED AREA IS 8,921 SF.

1 NORTH RENOVATION IS BE REFERRED AS PHASE 1.

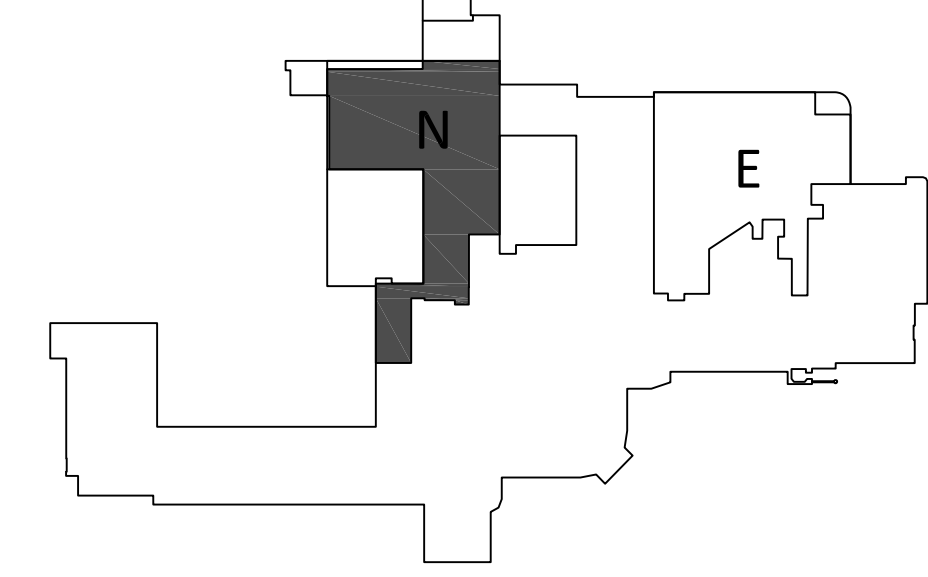
PHASE 2 - 1 EAST

2. RENOVATE EXISTING 1 EAST WHERE EMERGENCY DEPARTMENT IS CURRENTLY LOCATED TO ACCOMMODATE PRIMARY CARE. RENOVATED AREA IS 9,371 SF. 1 EAST RENOVATION IS REFERRED AS PHASE 2.

GOVERNING STATE AND LOCAL REGULATIONS

- FIRE PROTECTION DESIGN MANUAL (SIXTH EDITION SEPTEMBER 2013)
- 2012 INTERNATIONAL BUILDING CODE (IBC)
 - 2012 INTERNATIONAL MECHANICAL CODE (IMC)
 - 2012 NATIONAL ELECTRICAL CODE (NEC)
 - 2012 INTERNATIONAL FUEL GAS CODE (IFGC)
 - 2012 NFPA 101: LIFE SAFETY CODE
 - 2004 ARCHITECTURAL BARRIERS ACT ACCESSIBILITY STANDARD (ABAAS) (AMENDED 2008)
 - 2010 GUIDELINES FOR DESIGN AND CONSTRUCTION OF HEALTHCARE FACILITIES- THE FACILITY GUIDELINES INSTITUTE (FGI)
 - 2012 INTERNATIONAL EXISTING BUILDING CODE (IEBC)
 - 2012 INTERNATIONAL ENERGY CONSERVATION CODE (IECC)

KEY PLAN: FIRST FLOOR



Scale: AS NOTED

CONSULTANTS:

TE
The Estopinal Group
820 Jordan Street, Suite 507
Shreveport, LA 71101
tel: 318.424.3700
fax: 318.424.3764

PROJECT MANAGERS AND ENGINEERS:

TNF A VETERAN OWNED COMPANY
3 EXECUTIVE COURT, UNIT 4
SOUTH BARRINGTON, IL 60010

Drawing Title

LIFE SAFETY PLAN - 1 NORTH

Approved: Project Director

Project Title

RENOVATE ED & PRIMARY CARE

Phase 1

Location: SHREVEPORT VAMC
510 EAST STONER AVE

Date: 01/09/13
Checked: JAH
Drawn: CSH

Project Number

667-10-100

Building Number

1N

Drawing Number

A1.N2
Dwg. 9 of 112

Office of
Construction
and Facilities
Management
Department of
Veterans Affairs