

three inches = one foot
one and one half inches = one foot
one inch = one foot
three quarters inch = one foot
one half inch = one foot
one quarter inch = one foot
one eighth inch = one foot
one sixteenth inch = one foot

PROJECT: SHREVEPORT VAMC ARCH-A-VASH-015-AD101-Life Safety Plan-1E.dwg 1-08-13 03:01:12 PM jattaris

LIFE SAFETY PLAN GENERAL NOTES:

- A. ALL REQUIRED EXITS SHALL REMAIN OPEN DURING THE DURATION OF THE PROJECT AND TO BE KEPT CLEAR OF EQUIPMENT, MATERIALS, DEBRIS ETC.
- B. ALL REQUIRED EXIT EGRESS WIDTHS SHALL NOT BE DECREASED DURING THE DURATION OF THE PROJECT AND TO BE KEPT CLEAR OF EQUIPMENT, MATERIALS, DEBRIS ETC.
- C. REQUIRED TRAVEL DISTANCE BETWEEN FIRE EXTINGUISHERS SHALL BE MAINTAINED AT ALL TIMES. THE CONTRACTOR SHALL PROVIDE TEMPORARY FIRE EXTINGUISHER WHICH ARE PROPERLY MARKED WHEN TRAVEL DISTANCE IS INTERRUPTED BY THE CONSTRUCTION PROCESS.
- D. THE CONTRACTOR SHALL BE RESPONSIBLE FOR MAINTAINING ANY EXISTING FIRE PROTECTION OR ALARM SYSTEM. THE CONTRACTOR SHALL NOTIFY THE OWNER AND LOCAL FIRE OFFICIAL IN WRITING IF ANY PART OF THE FIRE PROTECTION OR FIRE ALARM SYSTEM IS TO BE INTERRUPTED.
- E. THE CONTRACTOR SHALL BE RESPONSIBLE FOR PROPERLY MARKING ANY AND ALL TEMPORARY EXITS.
- F. THE CONTRACTOR SHALL BE RESPONSIBLE FOR MAINTAINING THE EMERGENCY EXITS SIGNAGE AND LIGHTING SYSTEM INCLUDING BUT NOT LIMITED TO TEMPORARY SIGNAGE AND LIGHTING AS REQUIRED BY CODE OR LOCAL BUILDING AND FIRE OFFICIALS.
- G. THE CONTRACTOR SHALL BE RESPONSIBLE FOR THE RESTORATION OF ANY RATED ASSEMBLY DISTURBED BY THE CONSTRUCTION PROCESS TO ITS ORIGINAL INTEGRITY.

BUILDING CLASSIFICATION

USE:	HOSPITAL (EXISTING)	
OCCUPANCY CLASSIFICATION:	GROUP I-2	
TYPE OF CONSTRUCTION:	TYPE II-A (IBC) TYPE I-222 (NFPA)	HEIGHT: UL AREA: UL
BUILDING ELEMENTS - FIRE RESISTANT REQUIREMENTS	RATING	ASSEMBLY
FIRE WALLS	2 HR	U419
STRUCTURAL FRAME	2 HR	X101
BEARING WALLS EXTERIOR	2 HR	U305
INTERIOR	1 HR	U419
NON-BEARING WALLS EXTERIOR	1 HR 430'	AS NOTED ON PLAN
INTERIOR	AS NOTED ON PLAN	
FLOOR CONSTRUCTION	2 HR	UL D180
ROOF CONSTRUCTION	2 HR	UL F518
PROJECT SQUARE FOOTAGE RENOVATION:		
FIRST FLOOR - RENOVATION	9,141 SF	
FIRST FLOOR - EXTERIOR SPACE ENCLOSURE	232 SF	
TOTAL	9,373 SF	
AUTOMATIC SPRINKLER SYSTEM:		
ALL EXISTING HOSPITAL AREAS ARE CONSIDERED FULLY SPRINKLERED AND ALL AREAS OF NEW ADDITION SHALL BE FULLY SPRINKLERED.		

WALL RATINGS LEGEND:

- NOTES:
- RATED WALL DESIGNATIONS ARE DRAIN THROUGH OPENINGS TO INDICATE THAT THE WALL CONSTRUCTION ABOVE THE OPENING HAS THE SAME RATING AS THE CONSTRUCTION ON EITHER SIDE OF OPENING.
 - THE CONTRACTOR MUST SUBMIT DOCUMENTATION WHEN RATED WALL ASSEMBLY HAS BEEN TESTED AND APPROVED BY AGENCY OTHER THAN UL.
 - THE CONTRACTOR SHALL VERIFY EXISTING RATED WALLS. IF DEFICIENCIES ARE FOUND, THE CONTRACTOR SHALL UPGRADE WALL RATINGS AS ON LIFE SAFETY PLAN AIN AND ALE.
- NON RATED SMOKE PARTITION
- DOOR AND FRAME - NOT RATED
- DAMPERS - NOT REQUIRED
- PENETRATIONS/PERIMETER - SEALED
- EXTEND AT LEAST ONE LAYER OF GYPSUM WALL BOARD TO DECK ABOVE OR ENTIRE WALL CONSTRUCTION TO SMOKE RESISTANT CORRIDOR CEILING
- ONE HOUR FIRE BARRIER
- DOOR AND FRAME - 18 MIN. RATING
- DAMPERS - FIRE - SEE MECH. CODE
- PENETRATIONS/PERIMETER - FIRE CALKED
- EXTEND ENTIRE WALL CONSTRUCTION TO DECK ABOVE
- TWO HOUR FIRE BARRIERS
- DOOR AND FRAME - 60 MIN. RATING
- DAMPERS - FIRE - SEE MECH. CODE
- PENETRATIONS/PERIMETER - FIRE CALKED
- EXTEND ENTIRE WALL CONSTRUCTION TO DECK ABOVE
- FIRE/SMOKE BARRIER
- DOOR AND FRAME - 20 MIN. RATING
- DAMPERS - SMOKE - SEE MECH. CODE
- PENETRATIONS/PERIMETER - SEALED
- EXTEND ENTIRE WALL CONSTRUCTION TO DECK ABOVE
- ONE HOUR FIRE/SMOKE BARRIER
- DOOR AND FRAME - 45 MIN. RATING
- DAMPERS - FIRE AND SMOKE - SEE MECH. CODE
- PENETRATIONS/PERIMETER - FIRE CALKED
- EXTEND ENTIRE WALL CONSTRUCTION TO DECK ABOVE
- TWO HOUR FIRE/SMOKE BARRIER
- DOOR AND FRAME - 60 MIN. RATING
- DAMPERS - FIRE AND SMOKE - SEE MECH. CODE
- PENETRATIONS/PERIMETER - FIRE CALKED
- EXTEND ENTIRE WALL CONSTRUCTION TO DECK ABOVE

LIFE SAFETY PLAN SYMBOLS:

- EGRESS DIRECTION OF EXIT UNITS (INCHES)
- EXIT SIGN: EGRESS DIRECTION
- FIRE EXTINGUISHER IN FIRE HOSE CABINET
- FIRE EXTINGUISHER IN RECESSED FIRE EXTINGUISHER CABINET
- FULL STATION

NOTE: REFER TO FIRE PROTECTION PLAN FOR LOCATIONS OF FIRE ALARMS AND SMOKE DETECTORS.

CODE INFORMATION: LOUISIANA

PROJECT DESCRIPTION

THE PROJECT CONSISTS OF THE FOLLOWING:

PHASE 1 - 1 NORTH

1. RENOVATE EXISTING 1 NORTH WHERE PRIMARY CARE WHITE TEAM IS CURRENTLY LOCATED TO ACCOMMODATE EMERGENCY DEPARTMENT. RENOVATED AREA IS 19,831 SF.

1 NORTH RENOVATION IS BE REFERRED AS PHASE 1.

PHASE 2 - 1 EAST

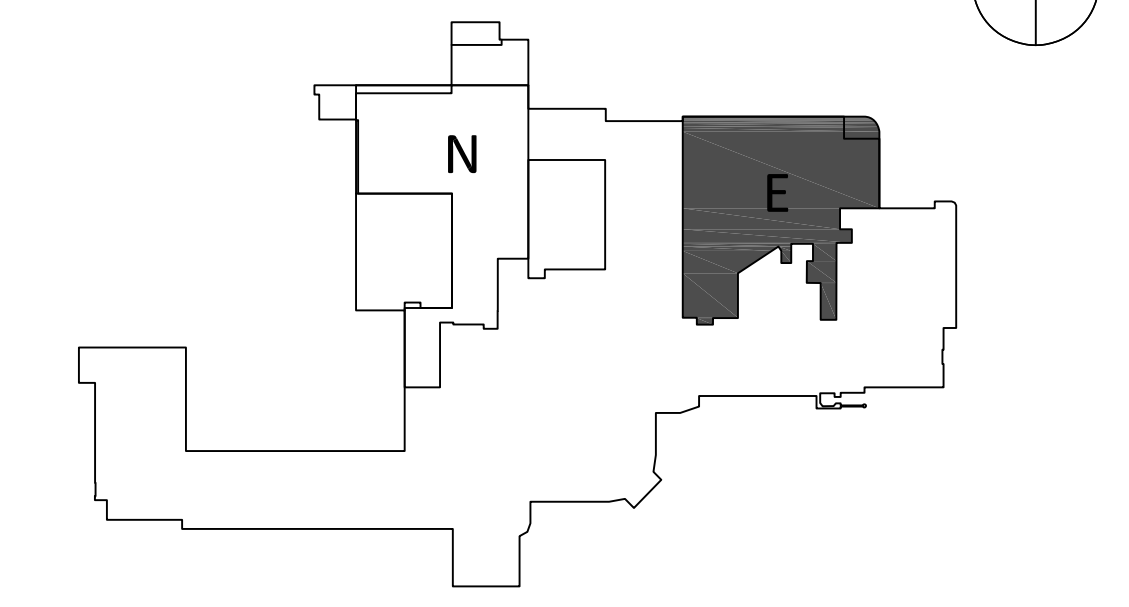
2. RENOVATE EXISTING 1 EAST WHERE EMERGENCY DEPARTMENT IS CURRENTLY LOCATED TO ACCOMMODATE PRIMARY CARE. RENOVATED AREA IS 9,373 SF.

1 EAST RENOVATION IS REFERRED AS PHASE 2.

GOVERNING STATE AND LOCAL REGULATIONS

- FIRE PROTECTION DESIGN MANUAL (SIXTH EDITION SEPTEMBER 2013)
- 2003 INTERNATIONAL BUILDING CODE (IBC)
 - 2002 INTERNATIONAL MECHANICAL CODE (IMC)
 - 2002 NATIONAL ELECTRIC CODE (NEC)
 - 2002 INTERNATIONAL FUEL GAS CODE (IFGC)
 - 2002 NFPA 101 - LIFE SAFETY CODE
 - 2004 ARCHITECTURAL BARRIERS ACT ACCESSIBILITY STANDARD (ABAAAS) (AMENDED 2009)
 - 2000 GUIDELINES FOR DESIGN AND CONSTRUCTION OF HEALTHCARE FACILITIES - THE FACILITY GUIDELINES INSTITUTE (FGI)
 - 2002 INTERNATIONAL EXISTING BUILDING CODE (IEBC)
 - 2002 INTERNATIONAL ENERGY CONSERVATION CODE (IECC)

KEYPLAN: FIRST FLOOR



Scale: AS NOTED

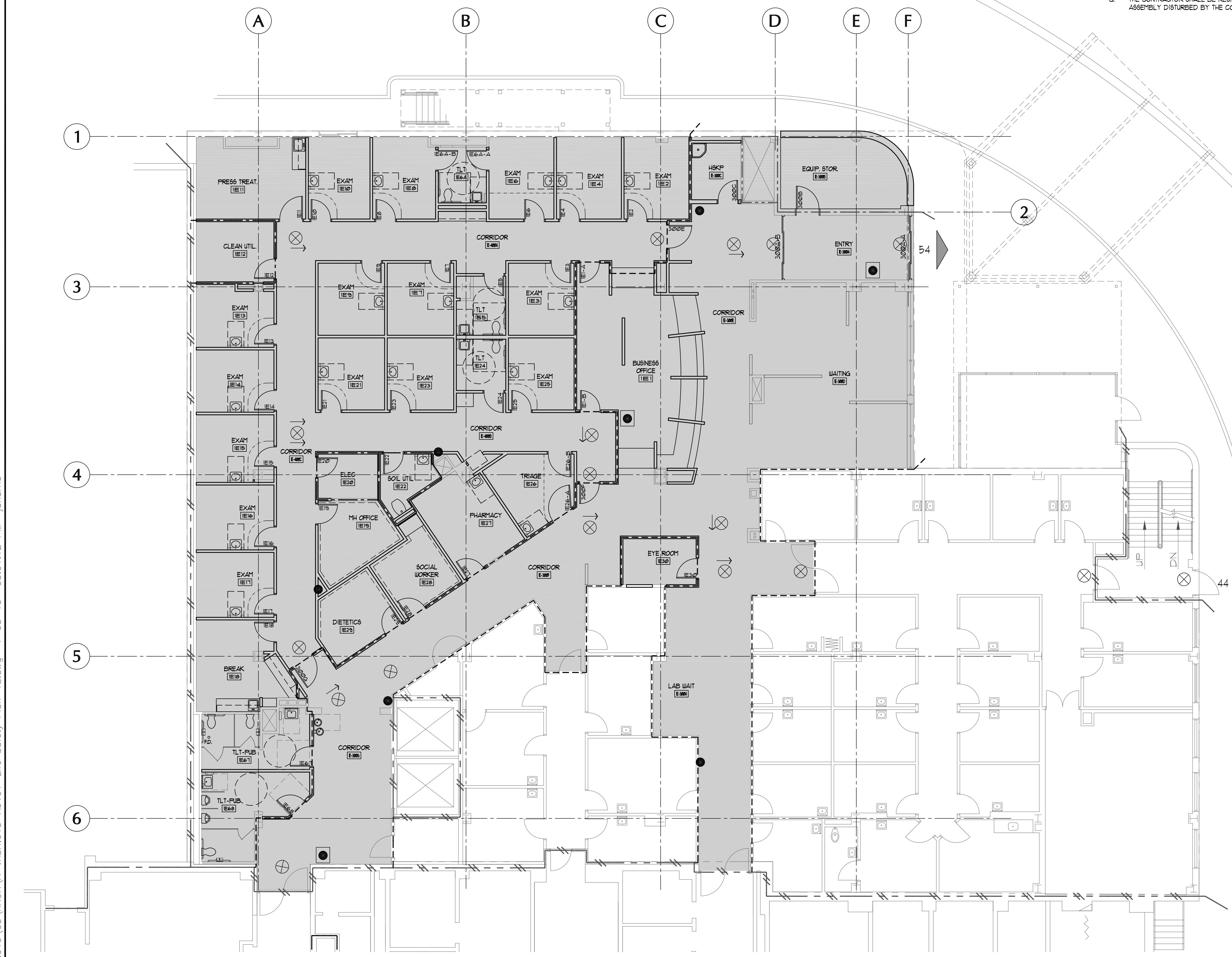
CODE TABLES:

TABLE 601 FIRE RESISTANCE RATING REQUIREMENTS FOR BUILDING ELEMENTS (hours)	
BUILDING ELEMENT	TYPE II
PRIMARY STRUCTURAL FRAME ^a	1
BEARING WALLS EXTERIOR ^b	1
INTERIOR	1
NONBEARING WALLS AND PARTITIONS EXTERIOR	SEE TABLE 602
NONBEARING WALLS AND PARTITIONS INTERIOR	0
FLOOR CONSTRUCTION INCL. SUPPORTING BEAMS AND JOISTS	1
ROOF CONSTRUCTION INCL. SUPPORTING BEAMS AND JOISTS	1 b,c

- b. EXCEPT IN GROUP F-1, H, M, AND S-1 OCCUPANCIES, FIRE PROTECTION OF STRUCTURAL MEMBERS SHALL NOT BE REQUIRED, INCLUDING PROTECTION OF ROOF FRAMING AND DECKING WHERE EVERY PART OF THE ROOF CONSTRUCTION IS 20 FEET OR MORE ABOVE ANY FLOOR IMMEDIATELY BELOW. FIRE RETARDANT-TREATED WOOD MEMBERS SHALL BE ALLOWED TO BE USED FOR SUCH UNPROTECTED MEMBERS.
- c. IN ALL OCCUPANCIES, HEAVY TIMBER SHALL BE ALLOWED WHERE A 1 HOUR OR LESS FIRE RESISTANCE RATING IS REQUIRED.
- d. AN APPROVED AUTOMATIC SPRINKLER SYSTEM IN ACCORDANCE WITH SECTION 903.3.1.1 SHALL BE ALLOWED TO BE SUBSTITUTED FOR 1 HOUR FIRE RESISTANCE RATED CONSTRUCTION, PROVIDED SUCH SYSTEM IS NOT OTHERWISE REQUIRED BY OTHER PROVISIONS OF THE CODE OR USED FOR AN ALLOWABLE AREA INCREASE IN ACCORDANCE WITH SECTION 506.3 OR AN ALLOWABLE HEIGHT INCREASE IN ACCORDANCE WITH SECTION 504.2. THE 1 HOUR SUBSTITUTION FOR THE FIRE RESISTANCE OF EXTERIOR WALLS SHALL NOT BE PERMITTED.

TABLE 602 FIRE-RESISTANCE RATING REQUIREMENTS FOR EXTERIOR WALLS BASED ON FIRE SEPERATION DISTANCE ^{a,e}		
FIRE SEPERATION DISTANCE - X (feet)	TYPE OF CONSTRUCTION	OCCUPANCY GROUP ⁱ
< 5'	ALL	1
5' ≤ X < 10	IA OTHERS	1 1
10' ≤ X < 30	IA, IB IB, VB OTHERS	1 ^d 0 0 ^d
X ≥ 30	ALL	0

- FOR SI: 1 FOOT=304.8mm
- a. LOAD-BEARING EXTERIOR WALLS SHALL ALSO COMPLY WITH THE FIRE-RESISTANCE RATING REQUIREMENTS OF TABLE 601.
- c. SEE SECTION 706.1.1 FOR PARTY WALLS.
- d. OPEN PARKING GARAGES COMPLYING WITH SECTION 406 SHALL NOT BE REQUIRED TO HAVE A FIRE-RESISTANCE RATING.
- e. THE FIRE-RESISTANCE RATING OF AN EXTERIOR WALL IS DETERMINED BASED UPON THE FIRE SEPERATION DISTANCE OF THE EXTERIOR WALL AND THE STORY IN WHICH THE WALL IS LOCATED.



01 PHASE 2 LIFE SAFETY PLAN - FIRST FLOOR EAST SCALE: 1/16"=1'-0"

CONSULTANTS:		PROJECT MANAGERS AND ENGINEERS:		Drawing Title LIFE SAFETY PLAN - 1 EAST		Project Title RENOVATE ED & PRIMARY CARE Phase 2		Project Number 667-10-100		Office of Construction and Facilities Management Department of Veterans Affairs	
				Approved: Project Director		Location SHREVEPORT VAMC 510 EAST STONER AVE		Building Number 1E			
Revisions:		Date				Date 01/09/13		Checked JAH			
								Drawing Number A1.E2			
								Dwg. 11 of 112			

THE ESTOPINAL GROUP

820 Jordan Street, Suite 507
Shreveport, LA 71101
tel. 318.424.3700
fax 318.424.3764

TNF A VETERAN OWNED COMPANY

3 EXECUTIVE COURT, UNIT 4
SOUTH BARRINGTON, IL 60010