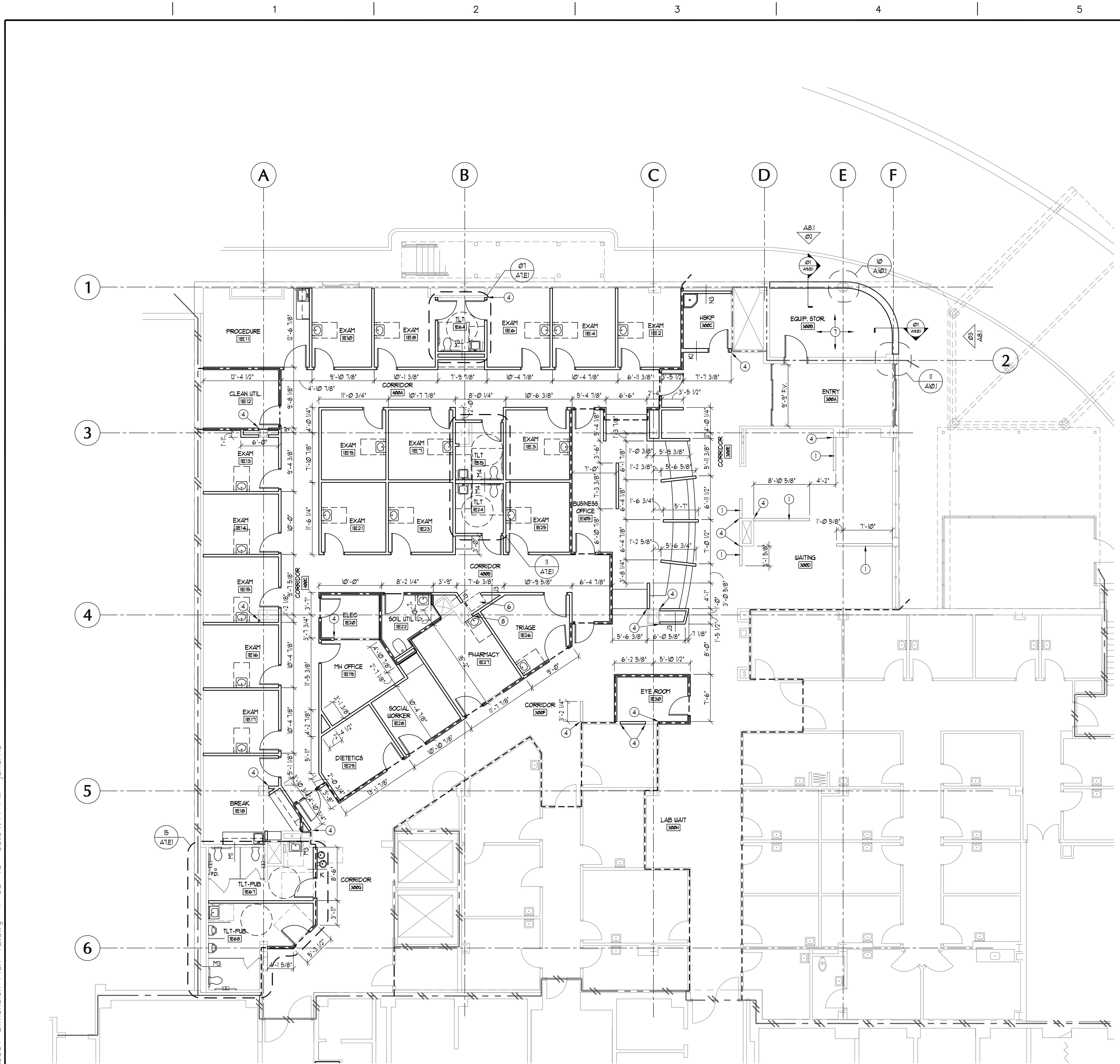


three eighths inch = one foot
one quarter inch = one foot
one eighth inch = one foot
one half inch = one foot
one inch = one foot
one and one half inches = one foot
two inches = one foot
three inches = one foot
four inches = one foot
five inches = one foot
six inches = one foot
seven inches = one foot
eight inches = one foot
nine inches = one foot
ten inches = one foot
eleven inches = one foot
twelve inches = one foot
thirteen inches = one foot
fourteen inches = one foot
fifteen inches = one foot
sixteen inches = one foot
seventeen inches = one foot
eighteen inches = one foot
nineteen inches = one foot
twenty inches = one foot
twenty one inches = one foot
twenty two inches = one foot
twenty three inches = one foot
twenty four inches = one foot
twenty five inches = one foot
twenty six inches = one foot
twenty seven inches = one foot
twenty eight inches = one foot
twenty nine inches = one foot
thirty inches = one foot
thirty one inches = one foot
thirty two inches = one foot
thirty three inches = one foot
thirty four inches = one foot
thirty five inches = one foot
thirty six inches = one foot
thirty seven inches = one foot
thirty eight inches = one foot
thirty nine inches = one foot
forty inches = one foot
forty one inches = one foot
forty two inches = one foot
forty three inches = one foot
forty four inches = one foot
forty five inches = one foot
forty six inches = one foot
forty seven inches = one foot
forty eight inches = one foot
forty nine inches = one foot
fifty inches = one foot
fifty one inches = one foot
fifty two inches = one foot
fifty three inches = one foot
fifty four inches = one foot
fifty five inches = one foot
fifty six inches = one foot
fifty seven inches = one foot
fifty eight inches = one foot
fifty nine inches = one foot
sixty inches = one foot
sixty one inches = one foot
sixty two inches = one foot
sixty three inches = one foot
sixty four inches = one foot
sixty five inches = one foot
sixty six inches = one foot
sixty seven inches = one foot
sixty eight inches = one foot
sixty nine inches = one foot
seventy inches = one foot
seventy one inches = one foot
seventy two inches = one foot
seventy three inches = one foot
seventy four inches = one foot
seventy five inches = one foot
seventy six inches = one foot
seventy seven inches = one foot
seventy eight inches = one foot
seventy nine inches = one foot
eighty inches = one foot
eighty one inches = one foot
eighty two inches = one foot
eighty three inches = one foot
eighty four inches = one foot
eighty five inches = one foot
eighty six inches = one foot
eighty seven inches = one foot
eighty eight inches = one foot
eighty nine inches = one foot
ninety inches = one foot
ninety one inches = one foot
ninety two inches = one foot
ninety three inches = one foot
ninety four inches = one foot
ninety five inches = one foot
ninety six inches = one foot
ninety seven inches = one foot
ninety eight inches = one foot
ninety nine inches = one foot
one hundred inches = one foot



01 PHASE 2
DIMENSION PLAN - FIRST FLOOR EAST
SCALE: 1/8"=1'-0"

GENERAL DIMENSION PLAN NOTES:

- ALL NEW INTERIOR PARTITIONS SHALL BE WALL TYPE 'U' UNLESS OTHERWISE INDICATED. NON RATED WALLS BELOW EXISTING DUCTWORK SHALL BE TYPE 'U' (PROVIDE ACOUSTICAL BATT INSULATION ABOVE CEILING).
- CONSTRUCTION AND INSTALLATIONS SHALL CONFORM TO ALL FEDERAL, STATE AND LOCAL ORDINANCES, CODES, ETC.
- DIMENSION PLANS ARE INTENDED TO SHOW DIMENSIONS AND WALL TYPES, WALL RATINGS, WALL SECTIONS, BUILDING SECTION INDICATORS, EXTERIOR ELEVATION INDICATORS, PLAN DETAIL INDICATORS, AND DIMENSION PLAN KEY NOTES. REFER TO THE A4 SERIES ARCHITECTURAL PLANS FOR ADDITIONAL PLAN KEY NOTES, INTERIOR ELEVATION MARKS AND INFORMATION RELATED TO OTHER ASPECTS OF THE PROJECT.
- ALL DIMENSIONS ARE TAKEN FROM COLUMN CENTERLINES TO THE FACE OF FINISH, FACE OF MASONRY, CONCRETE, OR EXISTING FINISHES, UNLESS NOTED OTHERWISE.
- CONTRACTOR SHALL VERIFY ALL CRITICAL DIMENSIONS WITHIN AND/OR RELATED TO THE SITE AND/OR EXISTING BUILDING, DIMENSIONS AND CONDITIONS INDICATED WERE DETERMINED BY VISUAL SURVEY. CONTRACTOR SHALL OBTAIN AND VERIFY ALL DIMENSIONS AND CONDITIONS AT JOB SITE AND BE FULLY RESPONSIBLE FOR THE SAME. IF DISCREPANCY IS FOUND, THE CONTRACTOR SHALL CONTACT THE ARCHITECT AND THE ARCHITECT SHALL DETERMINE THE CRITICAL DIMENSIONS TO BE HELD. THE CONTRACTOR SHALL SUBMIT TO THE ARCHITECT FOR REVIEW A DIMENSIONED INTERIOR WALL LAYOUT PRIOR TO ANY INTERIOR WALL CONSTRUCTION.
- DIMENSIONS ARE TAKEN TO THE 4'-0" PLANE ABOVE FINISHED FLOOR.
- ALL FIRE RATED ASSEMBLIES WITH RECESSED WALL ACCESSORIES AND/OR PENETRATIONS, I.E. RECEPTACLES, CONDUITS, DUCTS, PIPING, FIRE EXTINGUISHER CABINETS, RECESSED FLY/VENTILATION PLATES, TOILET DISPENSERS, ETC. SHALL BE CONSTRUCTED TO MAINTAIN THE DESIGNATED RATED ASSEMBLY.
- VERIFY ALL EXISTING FLOOR ELEVATIONS, GRADES AND DIMENSIONS OF EXISTING BUILDING AS IT RELATES TO THE NEW CONSTRUCTION. NOTIFY THE ARCHITECT OF ANY DISCREPANCIES PRIOR TO CONSTRUCTION.
- FINISHED FLOOR ELEVATIONS ARE FROM THE FACE OF THE FINISHED SUBSTRATE, I.E. CONCRETE DECK, CONCRETE SLAB, ETC.
- VARIATION IN THE EXISTING FLOOR SLAB ELEVATIONS MAY PRODUCE DIFFERENT CLEARANCES BETWEEN DOOR FRAME HEAD AND CEILING HEIGHTS. FIELD VERIFY EXISTING CONDITIONS PRIOR TO THE INSTALLATION OF EXIT LIGHTS, VENTILATION COVERS, DOWN LIGHTS, TRIM, ETC. NOTIFY THE ARCHITECT OF ANY DISCREPANCIES PRIOR TO CONSTRUCTION.
- VERIFY LOCATION AND SIZE OF ALL RECESSES, PLUMBING CHASES AND MECHANICAL SHAFTS PRIOR TO CONSTRUCTION.
- ALL EXTERIOR WALLS SHALL BE FRAMED OUT OF 16 GAUGE 6" METAL STUD AT 16" ON CENTER, UNLESS NOTED OTHERWISE. REFER TO THE STRUCTURAL DRAWINGS.
- INSTALL MINERAL WOOL INSULATION IN ALL EXPANSION JOINTS THROUGH THE FLOOR AND ROOF SLABS. CONTINUOUS. PROVIDE FIRE RATED EXPANSION JOINTS WITH MINERAL WOOL INSULATION BLANKET AT ALL RATED ASSEMBLIES.
- ALL PENETRATIONS THROUGH FLOORS, CHASES, SHAFTS AND FIRE RATED ASSEMBLIES SHALL BE SLEEVED PER THE REQUIRED TEST AND FIRE STOPPED.
- ALL PENETRATIONS THROUGH FLOOR SLABS, I.E. CONDUITS, DUCTS, PIPING, PNEUMATIC TUBE, ETC. SHALL BE FIRE STOPPED AND SEALED AS REQUIRED TO PROVIDE THE ASSEMBLY RATED DESIGNATED AND SHALL BE WATERTIGHT.
- PROVIDE FULL HEIGHT METAL STUDS (20 GAUGE MINIMUM) TO THE FLOOR OR ROOF DECK ABOVE AT ALL CORNERS, DOOR FRAMES, BORROWED LIGHTS FRAME, BEHIND WALL MOUNTED EQUIPMENT AND BEHIND WALL MOUNTED CASEWORK.
- ALL TRADES ARE REQUIRED TO VISIT THE SITE AND DETERMINE THAT ALL WORK CAN BE ACHIEVED IN A COMPLETE MANNER UNDER THEIR BID.
- PACK MINERAL WOOL INSULATION IN VOID SPACE BETWEEN STRUCTURAL DECK AND TOP OF ALL FIRE-RATED ASSEMBLIES. PROVIDE FIRE-RATED SEALANT AT ALL FIRE-RATED ASSEMBLIES.
- ALL INTERIOR WALLS, INCLUDING THE METAL STUD FRAMING, ACOUSTICAL INSULATION AND GYPSUM WALLBOARD SHALL EXTEND UP TO THE FLOOR OR ROOF DECK ABOVE.
- ALL VERTICAL OR HORIZONTAL DUCTS, PIPING, CONDUIT, ETC. (SHOWN OR NOT) WHERE REQUIRED SHALL BE BOXED OUT TO MATCH ADJACENT WALL CONSTRUCTION.
- RATED WALL DESIGNATIONS ARE SHOWN THROUGH OPENINGS TO INDICATE THAT THE WALL CONSTRUCTION ABOVE THE OPENING HAS THE SAME RATINGS AS THE CONSTRUCTION ON EITHER SIDE OF OPENING.
- PROVIDE ACCESS PANELS IN WALLS WHERE SERVICE TO MECHANICAL, PLUMBING, ELECTRICAL, ETC. ELEMENTS WILL NEED TO BE ADJUSTED, I.E. CLEAN OUTS, VALVES, DAMPERS, ETC. ACCESS PANELS SHALL BE OF THE SAME RATING AS THE ADJACENT WALL CONSTRUCTION.
- PROVIDE BLOCKING BEHIND ALL WALL MOUNTED HANDRAILS, BUMPER RAILS, TOILET ACCESSORIES, SCONCES, ETC.
- ALL CORRIDORS, HALLWAYS, PASSAGES, ETC. WALLS SHALL BE CONSTRUCTED TO BE SMOKE TIGHT AND SMOKE RESISTANT UNLESS NOTED OTHERWISE.
- REFER TO PRI SHEET FOR PLAN SYMBOLS LEGEND.
- REFER TO PRI SHEET FOR WALL RATING ASSEMBLY DETAILS.
- AA. REFER TO THE A1 SERIES SHEETS FOR PROJECT LIMITS, PHASING OF WORK, CONSTRUCTION POLLUTING STAGING, ETC. COORDINATE ALL WORK WITH OTHER PHASES AND SEQUENCE AS REQUIRED FOR THE COMPLETION OF THE PROJECT.
- AB. REFER TO THE A3 SERIES SHEETS FOR REFLECTED CEILING PLANS FOR DIMENSIONS TO LOCATE CUBICLE CURTAIN TRACKS, I.V. TRACKS, ETC.
- AC. REFER TO THE A11 SERIES SHEETS FOR ENLARGED TOILET PLANS AND TOILET ACCESSORY SCHEDULE FOR TYPICAL INSTALLATION.
- AD. REFER TO THE A11 SERIES SHEETS FOR INTERIOR ELEVATIONS.
- AE. REFER TO A14 SERIES SHEETS FOR THE OPENING SCHEDULE FOR THE OPENING SIZE.
- AF. REFER TO A16 SERIES SHEETS FOR EQUIPMENT PLANS, EQUIPMENT NUMBERS AND SCHEDULE.

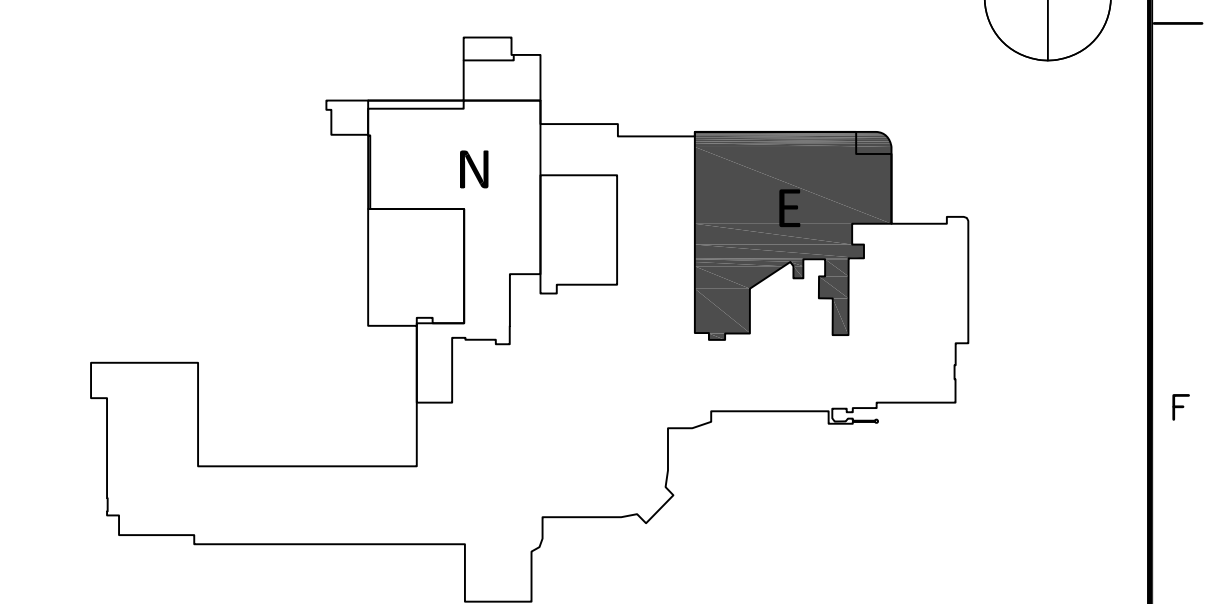
WALL RATINGS LEGEND:

- NOTES:
- RATED WALL DESIGNATIONS ARE DRAWN THROUGH OPENINGS TO INDICATE THAT THE WALL CONSTRUCTION ABOVE THE OPENING HAS THE SAME RATING AS THE CONSTRUCTION ON EITHER SIDE OF OPENING.
 - THE CONTRACTOR MUST SUBMIT DOCUMENTATION WHEN RATED WALL ASSEMBLY HAS BEEN TESTED AND APPROVED BY AGENCY OTHER THAN U.S.
 - THE CONTRACTOR SHALL VERIFY EXISTING RATED WALLS. IF DEFICIENCIES ARE FOUND, THE CONTRACTOR SHALL UPGRADE WALL RATINGS AS ON LIFE SAFETY PLAN AIN AND AIE.
- NON RATED SMOKE PARTITION
DOOR AND FRAME - NOT RATED
DAMPERS - NOT REQUIRED
PENETRATIONS PERIMETER - SEALED
EXTEND AT LEAST ONE LAYER OF GYPSUM WALL BOARD TO DECK ABOVE OR ENTIRE WALL CONSTRUCTION TO SMOKE RESISTANT CORRIDOR CEILING
- ONE HOUR FIRE BARRIER
DOOR AND FRAME - 45 MIN. RATING
DAMPERS - FIRE - SEE MECH CODE
PENETRATIONS PERIMETER - SEALED
EXTEND ENTIRE WALL CONSTRUCTION TO DECK ABOVE
- TWO HOUR FIRE BARRIER
DOOR AND FRAME - 90 MIN. RATING
DAMPERS - FIRE - SEE MECH CODE
PENETRATIONS PERIMETER - FIRE CALKED
EXTEND ENTIRE WALL CONSTRUCTION TO DECK ABOVE
- FIRE/SMOKE BARRIER
DOOR AND FRAME - 90 MIN. RATING
DAMPERS - SMOKE - SEE MECH CODE
PENETRATIONS PERIMETER - SEALED
EXTEND ENTIRE WALL CONSTRUCTION TO DECK ABOVE
- ONE HOUR FIRE/SMOKE BARRIER
DOOR AND FRAME - 45 MIN. RATING
DAMPERS - FIRE AND SMOKE - SEE MECH CODE
PENETRATIONS PERIMETER - FIRE CALKED
EXTEND ENTIRE WALL CONSTRUCTION TO DECK ABOVE
- TWO HOUR FIRE/SMOKE BARRIER
DOOR AND FRAME - 90 MIN. RATING
DAMPERS - FIRE AND SMOKE - SEE MECH CODE
PENETRATIONS PERIMETER - FIRE CALKED
EXTEND ENTIRE WALL CONSTRUCTION TO DECK ABOVE

DIMENSION PLAN KEYNOTES:

- HALF WALL. REFER TO PRI AND ID SHEETS.
- NOT USED.
- EXISTING BUILDING TO REMAIN, PROTECT DURING NEW CONSTRUCTION
- ALIGN CORNERS OF NEW CONSTRUCTION WITH EXISTING CONSTRUCTION
- G.C. TO MINIMIZE COLUMN ENCLOSURE.
- PNEUMATIC TUBE STATION.
- NEW ELEVATION TO MATCH EXISTING FLOOR.
- OFFSET PIPING IN WALL TO AVOID EXISTING STRUCTURE.

KEYPLAN: FIRST FLOOR



Scale: AS NOTED

--	--	--	--	--	--	--	--	--	--	--	--	--	--	--	--	--	--	--	--	--	--	--	--	--	--	--	--	--	--	--	--	--	--	--	--	--	--	--	--	--	--	--	--	--	--	--	--	--	--	--	--	--	--	--	--	--	--	--	--	--	--	--	--	--	--	--	--	--	--	--	--	--	--	--	--	--	--	--	--	--	--	--	--	--	--	--	--	--	--	--	--	--	--	--	--	--	--	--	--	--	--	--	--	--	--	--	--	--	--	--	--	--	--	--	--	--	--	--	--	--	--	--	--	--	--	--	--	--	--	--	--	--	--	--	--	--	--	--	--	--	--	--	--	--	--	--	--	--	--	--	--	--	--	--	--	--	--	--	--	--	--	--	--	--	--	--	--	--	--	--	--	--	--	--	--	--	--	--	--	--	--	--	--	--	--	--	--	--	--	--	--	--	--	--	--	--	--	--	--	--	--	--	--	--	--	--	--	--	--	--	--	--	--	--	--	--	--	--	--	--	--	--	--	--	--	--	--	--	--	--	--	--	--	--	--	--	--	--	--	--	--	--	--	--	--	--	--	--	--	--	--	--	--	--	--	--	--	--	--	--	--	--	--	--	--	--	--	--	--	--	--	--	--	--	--	--	--	--	--	--	--	--	--	--	--	--	--	--	--	--	--	--	--	--	--	--	--	--	--	--	--	--	--	--	--	--	--	--	--	--	--	--	--	--	--	--	--	--	--	--	--	--	--	--	--	--	--	--	--	--	--	--	--	--	--	--	--	--	--	--	--	--	--	--	--	--	--	--	--	--	--	--	--	--	--	--	--	--	--	--	--	--	--	--	--	--	--	--	--	--	--	--	--	--	--	--	--	--	--	--	--	--	--	--	--	--	--	--	--	--	--	--	--	--	--	--	--	--	--	--	--	--	--	--	--	--	--	--	--	--	--	--	--	--	--	--	--	--	--	--	--	--	--	--	--	--	--	--	--	--	--	--	--	--	--	--	--	--	--	--	--	--	--	--	--	--	--	--	--	--	--	--	--	--	--	--	--	--	--	--	--	--	--	--	--	--	--	--	--	--	--	--	--	--	--	--	--	--	--	--	--	--	--	--	--	--	--	--	--	--	--	--	--	--	--	--	--	--	--	--	--	--	--	--	--	--	--	--	--	--	--	--	--	--	--	--	--	--	--	--	--	--	--	--	--	--	--	--	--	--	--	--	--	--	--	--	--	--	--	--	--	--	--	--	--	--	--	--	--	--	--	--	--	--	--	--	--	--	--	--	--	--	--	--	--	--	--	--	--	--	--	--	--	--	--	--	--	--	--	--	--	--	--	--	--	--	--	--	--	--	--	--	--	--	--	--	--	--	--	--	--	--	--	--	--	--	--	--	--	--	--	--	--	--	--	--	--	--	--	--	--	--	--	--	--	--	--	--	--	--	--	--	--	--	--	--	--	--	--	--	--	--	--	--	--	--	--	--	--	--	--	--	--	--	--	--	--	--	--	--	--	--	--	--	--	--	--	--	--	--	--	--	--	--	--	--	--	--	--	--	--	--	--	--	--	--	--	--	--	--	--	--	--	--	--	--	--	--	--	--	--	--	--	--	--	--	--	--	--	--	--	--	--	--	--	--	--	--	--	--	--	--	--	--	--	--	--	--	--	--	--	--	--	--	--	--	--	--	--	--	--	--	--	--	--	--	--	--	--	--	--	--	--	--	--	--	--	--	--	--	--	--	--	--	--	--	--	--	--	--	--	--	--	--	--	--	--	--	--	--	--	--	--	--	--	--	--	--	--	--	--	--	--	--	--	--	--	--	--	--	--	--	--	--	--	--	--	--	--	--	--	--	--	--	--	--	--	--	--	--	--	--	--	--	--	--	--	--	--	--	--	--	--	--	--	--	--	--	--	--	--	--	--	--	--	--	--	--	--	--	--	--	--	--	--	--	--	--	--	--	--	--	--	--	--	--	--	--	--	--	--	--	--	--	--	--	--	--	--	--	--	--	--	--	--	--	--	--	--	--	--	--	--	--	--	--	--	--	--	--	--	--	--	--	--	--	--	--	--	--	--	--	--	--	--	--	--	--	--	--	--	--	--	--	--	--	--	--	--	--	--	--	--	--	--	--	--	--	--	--	--	--	--	--	--	--	--	--	--	--	--	--	--	--	--	--	--	--	--	--	--	--	--	--	--	--	--	--	--	--	--	--	--	--	--	--	--	--	--	--	--	--	--	--	--	--	--	--	--	--	--	--	--	--	--	--	--	--	--	--	--	--	--	--	--	--	--	--	--	--	--	--	--	--	--	--	--	--	--	--	--	--	--	--	--	--	--	--	--	--	--	--	--	--	--	--	--	--	--	--	--	--	--	--	--	--	--	--	--	--	--	--	--	--	--	--	--	--	--	--	--	--	--	--	--	--	--	--	--	--	--	--	--	--	--	--	--	--	--	--	--	--	--	--	--	--	--	--	--	--	--	--	--	--	--	--	--	--	--	--	--	--	--	--	--	--	--	--	--	--	--	--	--	--	--	--	--	--	--	--	--	--	--	--	--	--	--	--	--	--	--	--	--	--	--	--	--	--	--	--	--	--	--	--	--	--	--	--	--	--	--	--	--	--	--	--	--	--	--	--	--	--	--	--	--	--	--	--	--	--	--	--	--	--	--	--	--	--	--	--	--	--	--	--	--	--	--	--	--	--	--	--	--	--	--	--	--	--	--	--	--	--	--	--	--	--	--	--	--	--	--	--	--	--	--	--	--	--	--	--	--	--	--	--	--	--	--	--	--	--	--	--	--	--	--	--	--	--	--	--	--	--	--	--	--	--	--	--	--	--	--	--	--	--	--	--	--	--	--	--	--	--	--	--	--	--	--	--	--	--	--	--	--	--	--	--	--	--	--	--	--	--	--	--	--	--	--	--	--	--	--	--	--	--	--	--	--	--	--	--	--	--	--	--	--	--	--	--	--	--	--	--	--	--	--	--	--	--	--	--	--	--	--	--	--	--	--	--	--	--	--	--	--	--	--	--	--	--	--	--	--	--	--	--	--	--	--	--	--	--	--	--	--	--	--	--	--	--	--	--	--	--	--	--	--	--	--	--	--	--	--	--	--	--	--	--	--	--	--	--	--	--	--	--	--	--	--	--	--	--	--	--	--	--	--	--	--	--	--	--	--	--	--	--	--	--	--	--	--	--	--	--	--	--	--	--	--	--	--	--	--	--	--	--	--	--	--	--	--	--	--	--	--	--	--	--	--	--	--	--	--	--	--	--	--	--	--	--	--	--	--	--	--	--	--	--	--	--	--	--	--	--	--	--	--	--	--	--	--	--	--	--	--	--	--	--	--	--	--	--	--	--	--	--	--	--	--	--	--	--	--	--	--	--	--	--	--	--	--	--	--	--	--	--	--	--