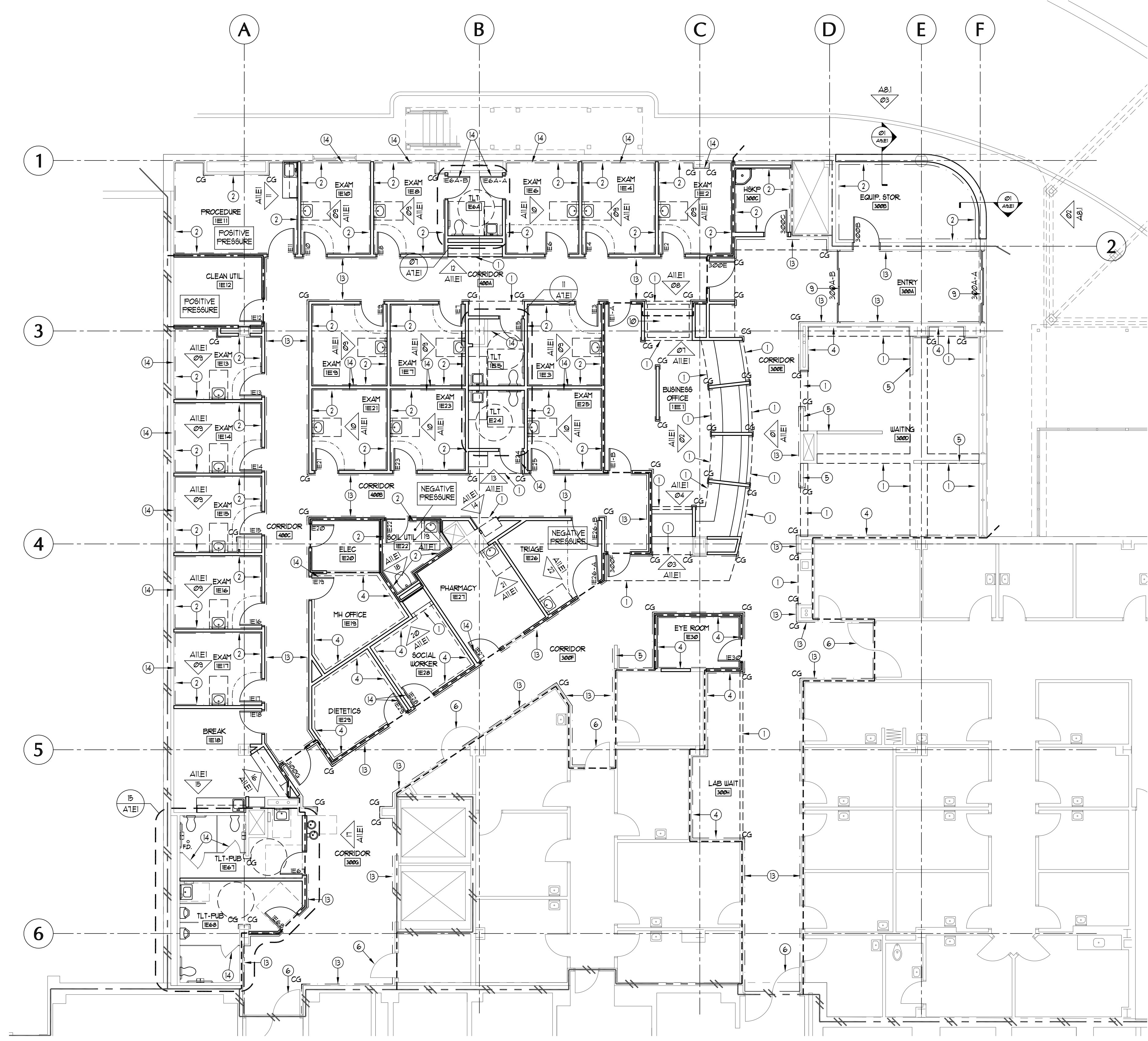


three eighths inch = one foot  
one eighth inch = one foot  
one quarter inch = one foot  
one half inch = one foot  
three quarters inch = one foot  
one inch = one foot  
one and one half inches = one foot  
two inches = one foot  
three inches = one foot  
four inches = one foot  
five inches = one foot  
six inches = one foot  
seven inches = one foot  
eight inches = one foot  
nine inches = one foot  
ten inches = one foot  
eleven inches = one foot  
twelve inches = one foot  
thirteen inches = one foot  
fourteen inches = one foot  
fifteen inches = one foot  
sixteen inches = one foot  
seventeen inches = one foot  
eighteen inches = one foot  
nineteen inches = one foot  
twenty inches = one foot  
twenty one inches = one foot  
twenty two inches = one foot  
twenty three inches = one foot  
twenty four inches = one foot  
twenty five inches = one foot  
twenty six inches = one foot  
twenty seven inches = one foot  
twenty eight inches = one foot  
twenty nine inches = one foot  
thirty inches = one foot  
thirty one inches = one foot  
thirty two inches = one foot  
thirty three inches = one foot  
thirty four inches = one foot  
thirty five inches = one foot  
thirty six inches = one foot  
thirty seven inches = one foot  
thirty eight inches = one foot  
thirty nine inches = one foot  
forty inches = one foot  
forty one inches = one foot  
forty two inches = one foot  
forty three inches = one foot  
forty four inches = one foot  
forty five inches = one foot  
forty six inches = one foot  
forty seven inches = one foot  
forty eight inches = one foot  
forty nine inches = one foot  
fifty inches = one foot  
fifty one inches = one foot  
fifty two inches = one foot  
fifty three inches = one foot  
fifty four inches = one foot  
fifty five inches = one foot  
fifty six inches = one foot  
fifty seven inches = one foot  
fifty eight inches = one foot  
fifty nine inches = one foot  
sixty inches = one foot  
sixty one inches = one foot  
sixty two inches = one foot  
sixty three inches = one foot  
sixty four inches = one foot  
sixty five inches = one foot  
sixty six inches = one foot  
sixty seven inches = one foot  
sixty eight inches = one foot  
sixty nine inches = one foot  
seventy inches = one foot  
seventy one inches = one foot  
seventy two inches = one foot  
seventy three inches = one foot  
seventy four inches = one foot  
seventy five inches = one foot  
seventy six inches = one foot  
seventy seven inches = one foot  
seventy eight inches = one foot  
seventy nine inches = one foot  
eighty inches = one foot  
eighty one inches = one foot  
eighty two inches = one foot  
eighty three inches = one foot  
eighty four inches = one foot  
eighty five inches = one foot  
eighty six inches = one foot  
eighty seven inches = one foot  
eighty eight inches = one foot  
eighty nine inches = one foot  
ninety inches = one foot  
ninety one inches = one foot  
ninety two inches = one foot  
ninety three inches = one foot  
ninety four inches = one foot  
ninety five inches = one foot  
ninety six inches = one foot  
ninety seven inches = one foot  
ninety eight inches = one foot  
ninety nine inches = one foot  
one hundred inches = one foot



01 PHASE 2  
ARCHITECTURAL PLAN - FIRST FLOOR EAST  
SCALE: 1/8"=1'-0"

## WALL RATINGS LEGEND:

- NOTES:  
A. RATED WALL DESIGNATIONS ARE DRAWN THROUGH OPENINGS TO INDICATE THAT THE WALL CONSTRUCTION ABOVE THE OPENING HAS THE SAME RATING AS THE CONSTRUCTION ON EITHER SIDE OF THE OPENING.  
B. THE CONTRACTOR MUST SUBMIT DOCUMENTATION WHEN RATED WALL ASSEMBLY HAS BEEN TESTED AND APPROVED BY AGENCY OTHER THAN UL.  
C. THE CONTRACTOR SHALL VERIFY EXISTING RATED WALLS. IF DEFICIENCIES ARE FOUND, THE CONTRACTOR SHALL UPGRADE WALL RATINGS AS ON LIFE SAFETY PLAN AND A/E.

---	NON RATED SMOKE PARTITION
---	DOOR AND FRAME - NOT RATED
---	DAMPERS - NOT REQUIRED
---	PENETRATIONS/PERIMETER - SEALED
---	EXTEND AT LEAST ONE LAYER OF GYPSUM WALL BOARD TO DECK ABOVE OR ENTIRE WALL CONSTRUCTION TO SMOKE RESISTANT CORRIDOR CEILING
---	ONE HOUR FIRE BARRIER
---	DOOR AND FRAME - 45 MIN. RATING
---	DAMPERS - FIRE - SEE MECH CODE
---	PENETRATIONS/PERIMETER - FIRE CALLED
---	EXTEND ENTIRE WALL CONSTRUCTION TO DECK ABOVE
---	TWO HOUR FIRE BARRIER
---	DOOR AND FRAME - 90 MIN. RATING
---	DAMPERS - FIRE - SEE MECH CODE
---	PENETRATIONS/PERIMETER - FIRE CALLED
---	EXTEND ENTIRE WALL CONSTRUCTION TO DECK ABOVE
---	FIRE SMOKE BARRIER
---	DOOR AND FRAME - 90 MIN. RATING
---	DAMPERS - SMOKE - SEE MECH CODE
---	PENETRATIONS/PERIMETER - SEALED
---	EXTEND ENTIRE WALL CONSTRUCTION TO DECK ABOVE
---	ONE HOUR FIRE SMOKE BARRIER
---	DOOR AND FRAME - 45 MIN. RATING
---	DAMPERS - FIRE AND SMOKE - SEE MECH CODE
---	PENETRATIONS/PERIMETER - FIRE CALLED
---	EXTEND ENTIRE WALL CONSTRUCTION TO DECK ABOVE
---	TWO HOUR FIRE SMOKE BARRIER
---	DOOR AND FRAME - 90 MIN. RATING
---	DAMPERS - FIRE AND SMOKE - SEE MECH CODE
---	PENETRATIONS/PERIMETER - FIRE CALLED
---	EXTEND ENTIRE WALL CONSTRUCTION TO DECK ABOVE

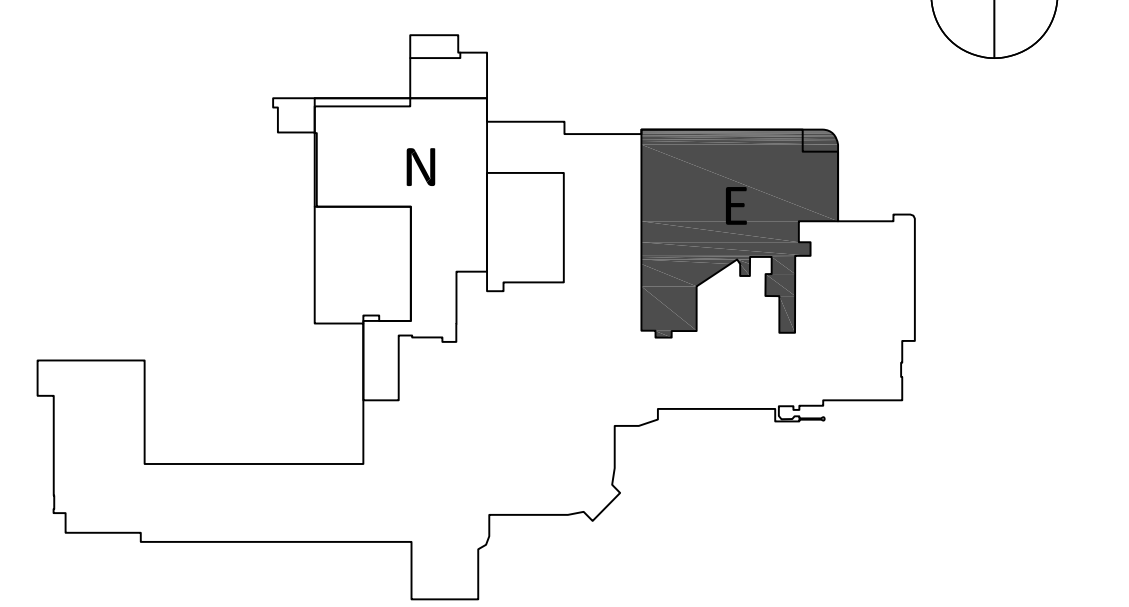
## GENERAL ARCHITECTURAL PLAN NOTES:

- A. CONTRACTOR IS TO PRACTICE CARE IN CORE DRILLING EXISTING FLOOR BELOW IN ORDER TO ENSURE STRUCTURAL INTEGRITY OF BUILDING. EXISTING CONCRETE BEAM AND EXISTING CONCRETE RIS SHALL NOT BE DISTURBED OR MODIFIED.  
B. ALL TRADES ARE REQUIRED TO VISIT THE SITE AND DETERMINE THAT ALL WORK CAN BE ACHIEVED IN A COMPLETE MANNER UNDER THEIR BID.  
C. CONSTRUCTION AND INSTALLATIONS SHALL CONFORM TO ALL FEDERAL, STATE AND LOCAL ORDINANCES, CODES, ETC.  
D. REFER TO THE A1 SERIES SHEETS FOR PROJECT LIMITS, PHASING OF WORK, CONSTRUCTION FOLLOWING, STAGING, ETC. COORDINATE ALL WORK WITH OTHER PHASES AND SEQUENCE AS REQUIRED FOR THE COMPLETION OF THE PROJECT.  
E. REFER TO THE A3 SERIES SHEETS FOR GENERAL DIMENSION NOTES.  
F. REFER TO THE A5 SERIES SHEETS FOR REFLECTED CEILING PLANS FOR DIMENSIONS TO LOCATE CURTAIN TRACKS, V. TRACKS, ETC.  
G. REFER TO THE A7 SERIES SHEETS FOR TOILET ACCESSORY SCHEDULE.  
H. REFER TO THE A11 SERIES SHEETS FOR INTERIOR ELEVATIONS DESIGNATED BY THE INTERIOR ELEVATIONS ARE IN SEQUENCE FROM ONE A11 SHEET TO THE NEXT.  
I. REFER TO THE A11 SERIES SHEETS FOR INTERIOR ELEVATIONS FOR DIMENSIONS TO LOCATE HEADWALL CABEWOR, HEADWALL EQUIPMENT, MEDICAL GAS OUTLETS, ELECTRICAL SERVICES, NURSE CALL, POWER, TELEPHONE, COMPUTER JACKS, DATA JACKS, ETC.  
J. REFER TO THE A14 SERIES SHEETS FOR OPENING SCHEDULE.  
K. REFER TO THE A16 SERIES SHEETS FOR THE EQUIPMENT SIZE.  
L. REFER TO THE ID SERIES SHEETS FOR ROOM FINISHES SCHEDULE.  
M. REFER TO SHEET PRU FOR PLAN SYMBOLS LEGEND.

## ARCHITECTURAL PLAN KEYNOTES:

1. LINE OF BULK-HEAD ABOVE.  
2. --- INDICATES WALL PROTECTION REFER TO (DIE) FOR SPECIFIED FINISH.  
3. NEW EXTERIOR WINDOWS. REFER TO OPENING SCHEDULES.  
4. --- INDICATES CHAIR RAIL. REFER TO (DIE) FOR SPECIFIED FINISH.  
5. HALF WALL. SEE PRU FOR SECTIONS AND ID SHEETS FOR ELEVATIONS.  
6. EXISTING DOOR AND FRAME TO REMAIN.  
7. CARD READER FOR DOOR OPERATION.  
8. PUSH PAD READER FOR DOOR OPERATION.  
9. INFRARED SENSOR FOR DOOR OPERATION.  
10. WINDOW SHUTTER.  
11. PUSH PAD FOR AUTOMATIC DOORS.  
12. RECESSED FIRE EXTINGUISHER CABINET. LOCATE BOTTOM OF CABINET SHELF 2'-6" ABOVE FINISHED FLOOR.  
13. --- INDICATES HAND RAIL. REFER TO (DIE) FOR SPECIFIED FINISH.  
14. PROVIDE COAT HOOK. REFER TO A1E1 CONFIRM EXACT LOCATION WITH COR.

## KEYPLAN: FIRST FLOOR



Scale: AS NOTED

Revisions:	Date:	CONSULTANTS:	 The Estopinal Group 820 Jordan Street, Suite 507 Shreveport, LA 71101 tel. 318.424.3700 fax 318.424.3764	 PROJECT MANAGERS AND ENGINEERS: <b>TNF</b> A VETERAN OWNED COMPANY 3 EXECUTIVE COURT, UNIT 4 SOUTH BARRINGTON, IL 60010	Drawing Title <b>ARCHITECTURAL PLAN - I EAST</b> Approved: Project Director	Project Title <b>RENOVATE ED &amp; PRIMARY CARE</b> Phase 2 Location <b>SHREVEPORT VAMC</b> 510 EAST STONER AVE Date 01/09/13 Checked JAH Drawn CSH	Project Number <b>667-10-100</b> Building Number <b>1E</b> Drawing Number <b>A4.E1</b> Dwg. 17 of 112	Office of Construction and Facilities Management Department of Veterans Affairs
------------	-------	--------------	--	---	---	--	---	--