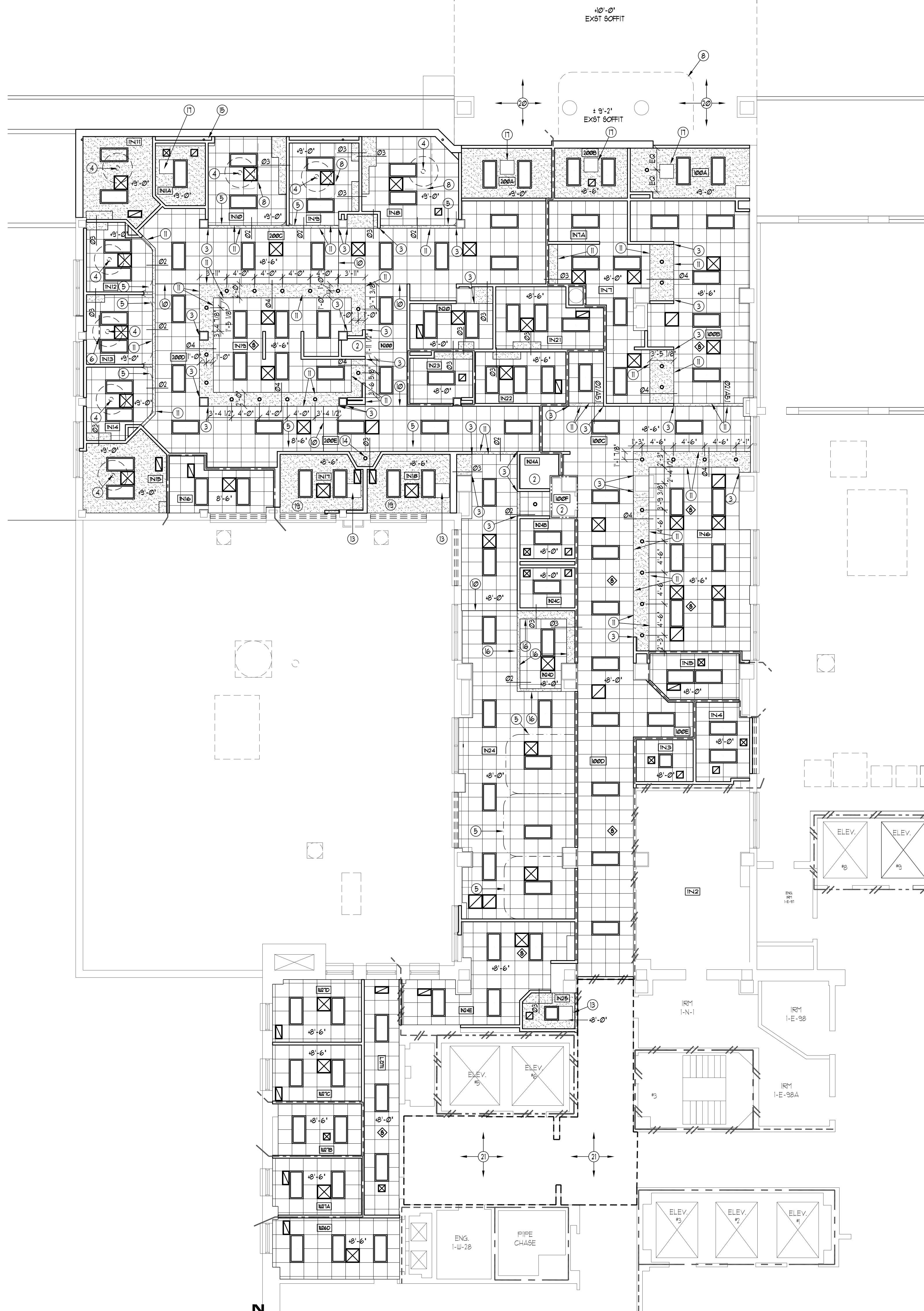
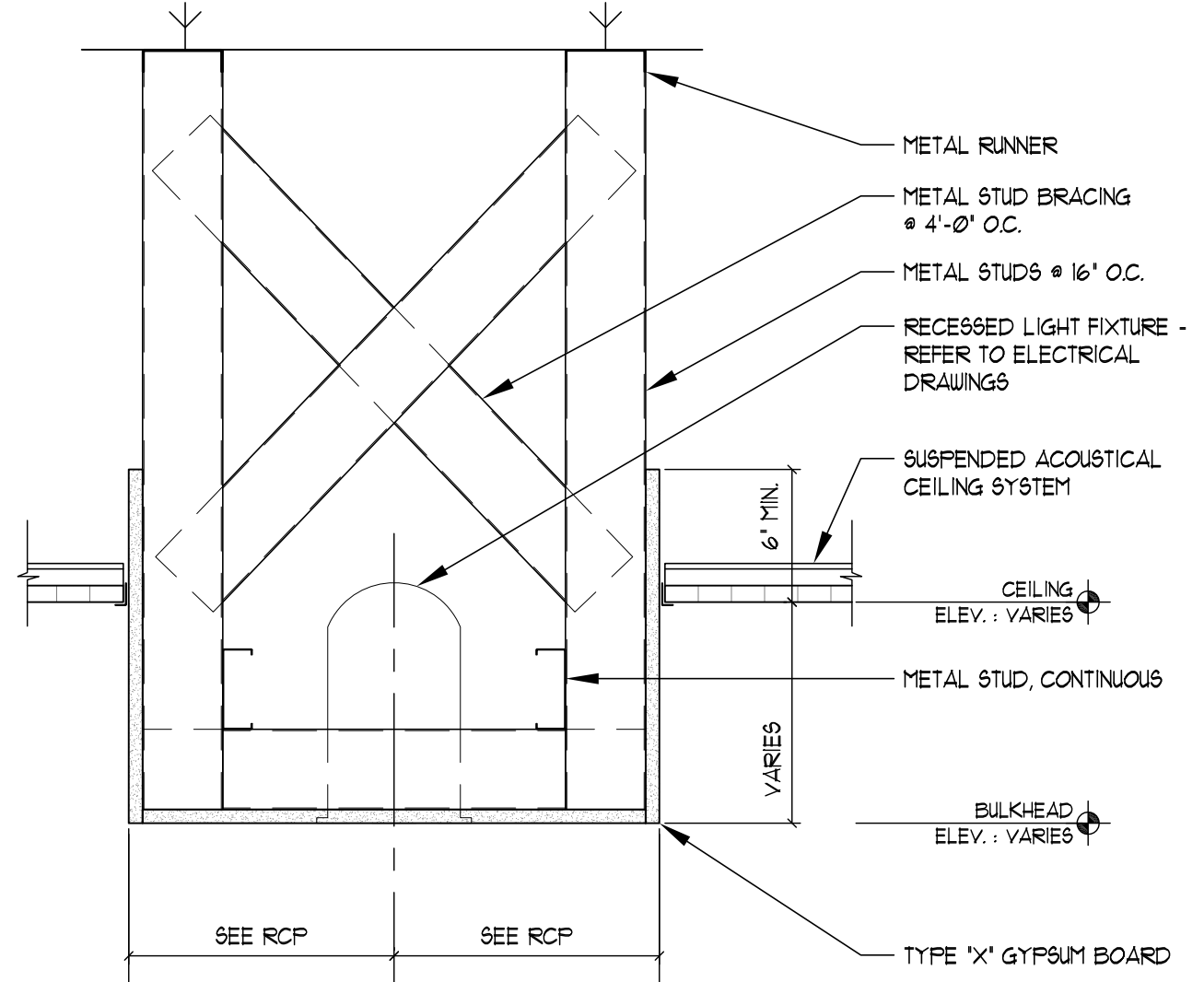
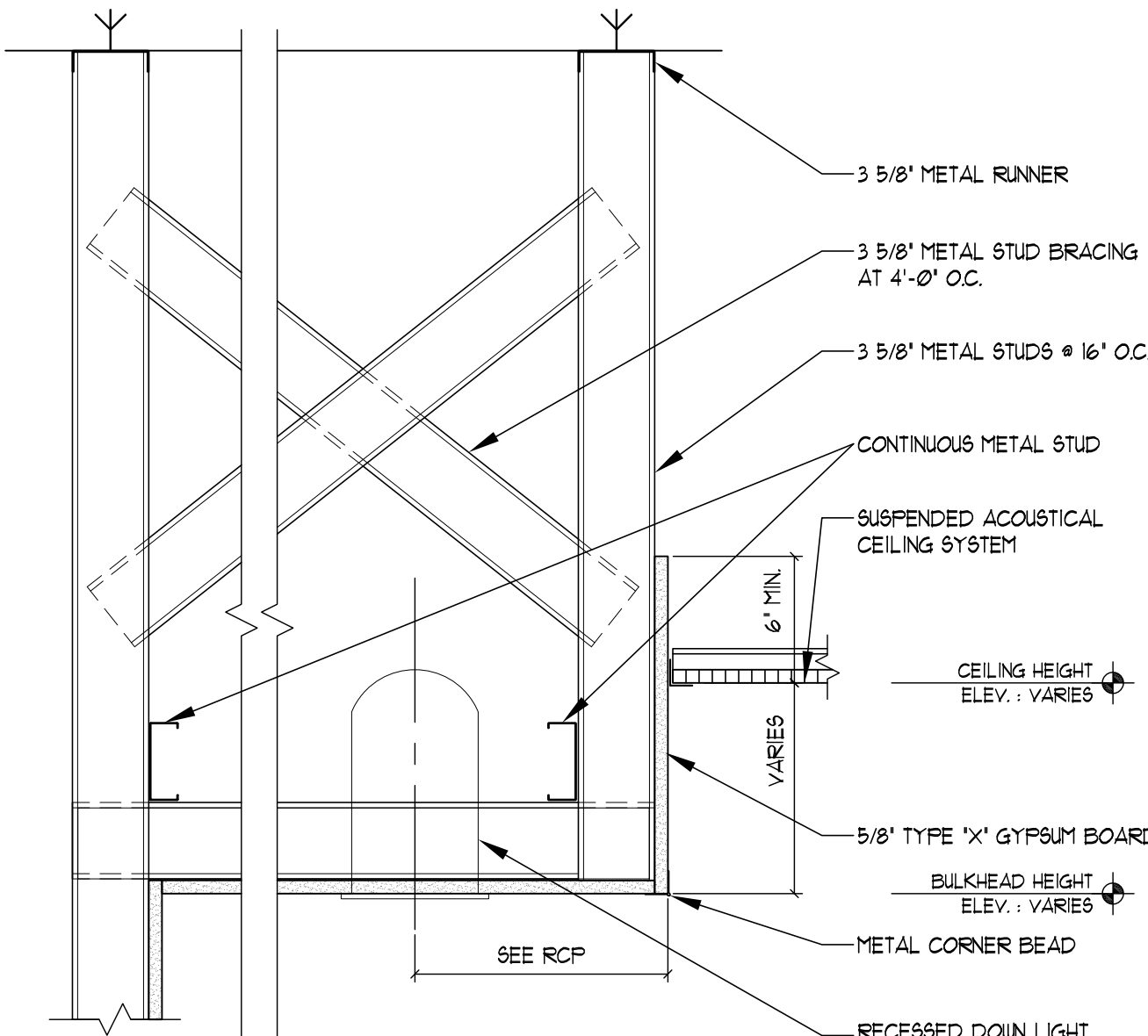


three inches = one foot  
one and one half inches = one foot  
one inch = one foot  
three quarters inch = one foot  
one half inch = one foot  
three eighths inch = one foot  
one quarter inch = one foot  
one eighth inch = one foot

ACTIVE SHREVEPORT PROJECTS VASH VASHOTSYCD ARCH 015-A0501-Reflected Ceiling Plan - 1N.dwg 1-08-13 03:12:24 PM

EXISTING FLOOR STRUCTURE: ONE WAY CONCRETE JOIST WITH BEAM  
- DIMENSION FROM FLOOR TO BOTTOM OF JOIST: 10'-11 1/2"  
- DIMENSION FROM FLOOR TO THE UNDERSIDE OF CONCRETE SLAB: 11'-11"



01 PHASE 1 REFLECTED CEILING PLAN - FIRST FLOOR NORTH  
SCALE: 1/8" = 1'-0"

### GENERAL REFLECTED CEILING PLAN NOTES:

- A. ALL CEILING HEIGHTS ARE 9'-0" UNLESS NOTED OTHERWISE.
- B. ALL BULKHEAD/SOFFIT HEIGHTS ARE 1'-2" UNLESS NOTED OTHERWISE.
- C. ALL TRADES SHALL PARTICIPATE IN A COORDINATION MEETING PRIOR TO ANY INSTALLATION OF ABOVE CEILING SYSTEMS, SERVICES, EQUIPMENT, ETC. DURING THE SHOP DRAWING PHASE.
- D. REFER TO THE PROJECT MANUAL AND THE FIRE PROTECTION PLANS FOR THE LOCATION OF THE SPRINKLER HEADS UNLESS DIMENSIONED OTHERWISE ON THE PLANS. DO NOT LOCATE ANY SPRINKLER HEADS IN A BULKHEAD OR SOFFIT WITHOUT FIRST COORDINATING THE LOCATION WITH THE ARCHITECT.
- E. THE REFLECTED CEILING PLANS DO NOT INDICATE THE LIGHTING LAYOUT IN AREAS WITHOUT CEILING FINISHES. REFER TO THE MECHANICAL, PLUMBING AND ELECTRICAL DRAWINGS FOR ADDITIONAL SERVICES.
- F. REFER TO THE CASEWORK SECTIONS FOR BULKHEAD DEPTHS OVER UPPER CABINETS. THE BULKHEAD SHALL EXTEND BEYOND THE FACE OF THE CABINET DOOR (2" OR SHALL EXTEND 1/4" BEYOND THE FACE OF THE OPEN SHELF UNITS).
- G. REFER TO THE MECHANICAL, PLUMBING AND ELECTRICAL DRAWINGS FOR ADDITIONAL CEILING MOUNTED SERVICES.
- H. ALL CEILING MOUNTED SPRINKLER HEADS, DETECTORS, LIGHT FIXTURES, EXIT LIGHTS, ETC. SHALL BE INSTALLED IN THE CENTER OF THE CEILING SYSTEM GRID. REFER TO THE MECHANICAL AND ELECTRICAL DRAWINGS FOR ADDITIONAL INFORMATION.
- I. REFER TO A2 SERIES SHEETS FOR GENERAL DEMOLITION NOTES.
- J. REFER TO THE A5 SERIES SHEETS FOR THE BULKHEAD/SOFFIT DETAILS.
- K. REFER TO A13 SERIES SHEETS FOR ACCESS DOOR DETAILS.
- L. REFER TO A16 SERIES SHEETS FOR EQUIPMENT SCHEDULE.
- M. REFER TO D2 SHEETS FOR ROOF FINISH SCHEDULE AND PLAN FOR FINISH MATERIAL AND COLOR.
- N. REFER TO THE DEMOLITION PLANS FOR LOCATION OF EXISTING CEILINGS TO BE REMOVED.
- O. COORDINATE THE EXTENT OF CEILING REMOVAL AND REPLACEMENT WITH WORK ASSOCIATED WITH MEP AND ASBESTOS REMOVAL. REFER TO MEP DRAWINGS AND ASBESTOS DRAWING FOR ADDITIONAL INFORMATION.

### WALL RATINGS LEGEND:

NOTES:  
A. RATED WALL DESIGNATIONS ARE DRAWN THROUGH OPENINGS TO INDICATE THAT THE WALL CONSTRUCTION ABOVE THE OPENING HAS THE SAME RATING AS THE CONSTRUCTION ON EITHER SIDE OF OPENING.  
B. THE CONTRACTOR MUST SUBMIT DOCUMENTATION WHEN RATED WALL ASSEMBLY HAS BEEN TESTED AND APPROVED BY AGENCY OTHER THAN UL.  
C. THE CONTRACTOR SHALL VERIFY EXISTING RATED WALLS FOR DEFICIENCIES ARE FOUND. THE CONTRACTOR SHALL UPGRADE WALL RATINGS AS ON LIFE SAFETY PLAN AND A/E.

NON RATED SMOKE PARTITION	NOT RATED
DOOR AND FRAME -	NOT REQUIRED
DAMPERS -	NOT REQUIRED
PENETRATIONS/PERIMETER -	SEALED
EXTEND AT LEAST ONE LAYER OF GYPSUM WALL BOARD TO DECK ABOVE OR ENTIRE WALL CONSTRUCTION TO SMOKE RESISTANT CORRIDOR CEILING	
ONE HOUR FIRE BARRIER	45 MIN. RATING
DOOR AND FRAME -	FIRE - SEE MECH CODE
DAMPERS -	FIRE CALLED
PENETRATIONS/PERIMETER -	FIRE CALLED
EXTEND ENTIRE WALL CONSTRUCTION TO DECK ABOVE	
TWO HOUR FIRE BARRIER	90 MIN. RATING
DOOR AND FRAME -	FIRE - SEE MECH CODE
DAMPERS -	FIRE CALLED
PENETRATIONS/PERIMETER -	FIRE CALLED
EXTEND ENTIRE WALL CONSTRUCTION TO DECK ABOVE	
FIRE SMOKE BARRIER	90 MIN. RATING
DOOR AND FRAME -	SPRINK - SEE MECH CODE
DAMPERS -	SEALED
PENETRATIONS/PERIMETER -	SEALED
EXTEND ENTIRE WALL CONSTRUCTION TO DECK ABOVE	
ONE HOUR FIRE SMOKE BARRIER	45 MIN. RATING
DOOR AND FRAME -	FIRE AND SMOKE - SEE MECH CODE
DAMPERS -	FIRE CALLED
PENETRATIONS/PERIMETER -	FIRE CALLED
EXTEND ENTIRE WALL CONSTRUCTION TO DECK ABOVE	
TWO HOUR FIRE SMOKE BARRIER	90 MIN. RATING
DOOR AND FRAME -	FIRE AND SMOKE - SEE MECH CODE
DAMPERS -	FIRE CALLED
PENETRATIONS/PERIMETER -	FIRE CALLED
EXTEND ENTIRE WALL CONSTRUCTION TO DECK ABOVE	

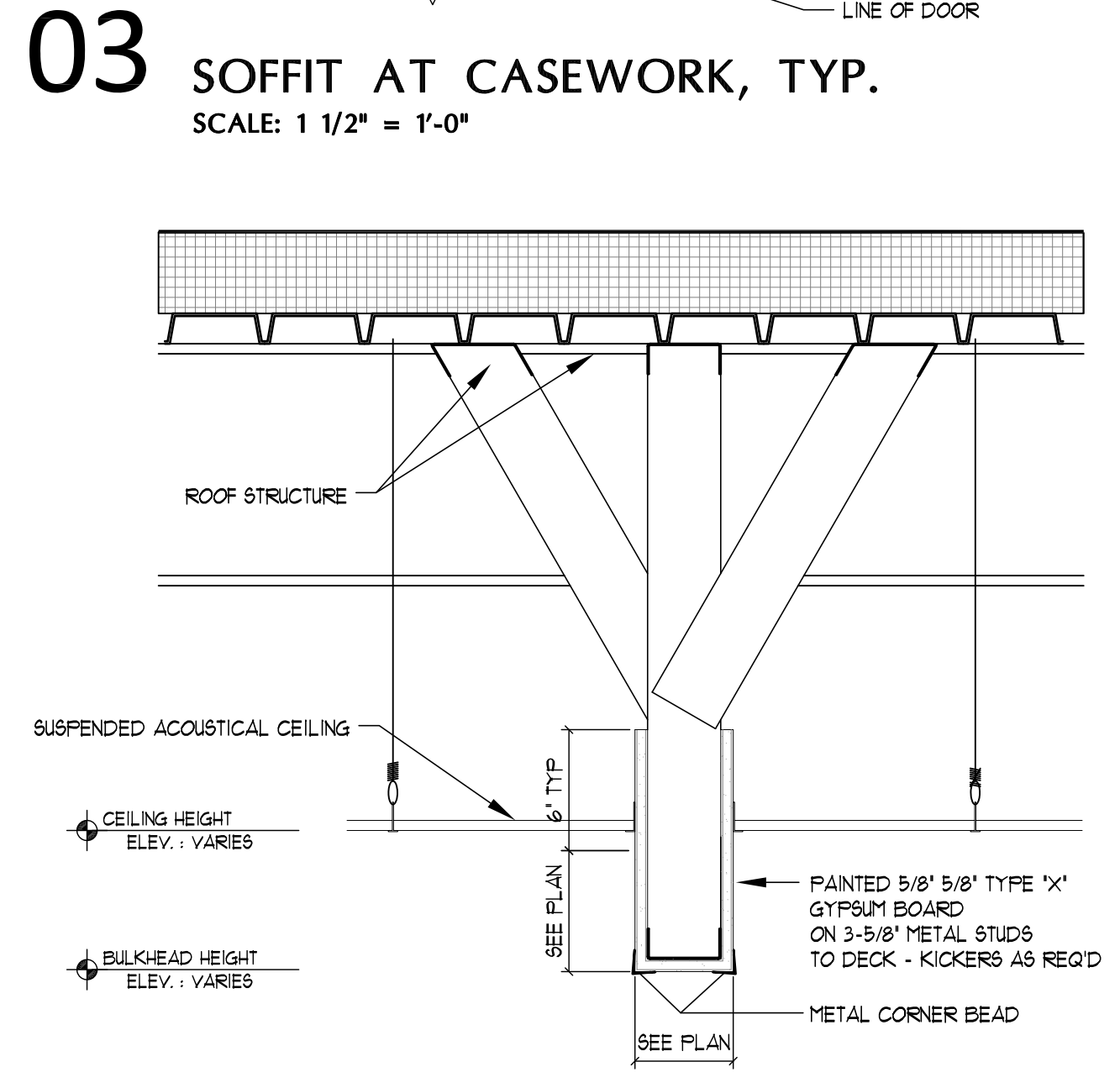
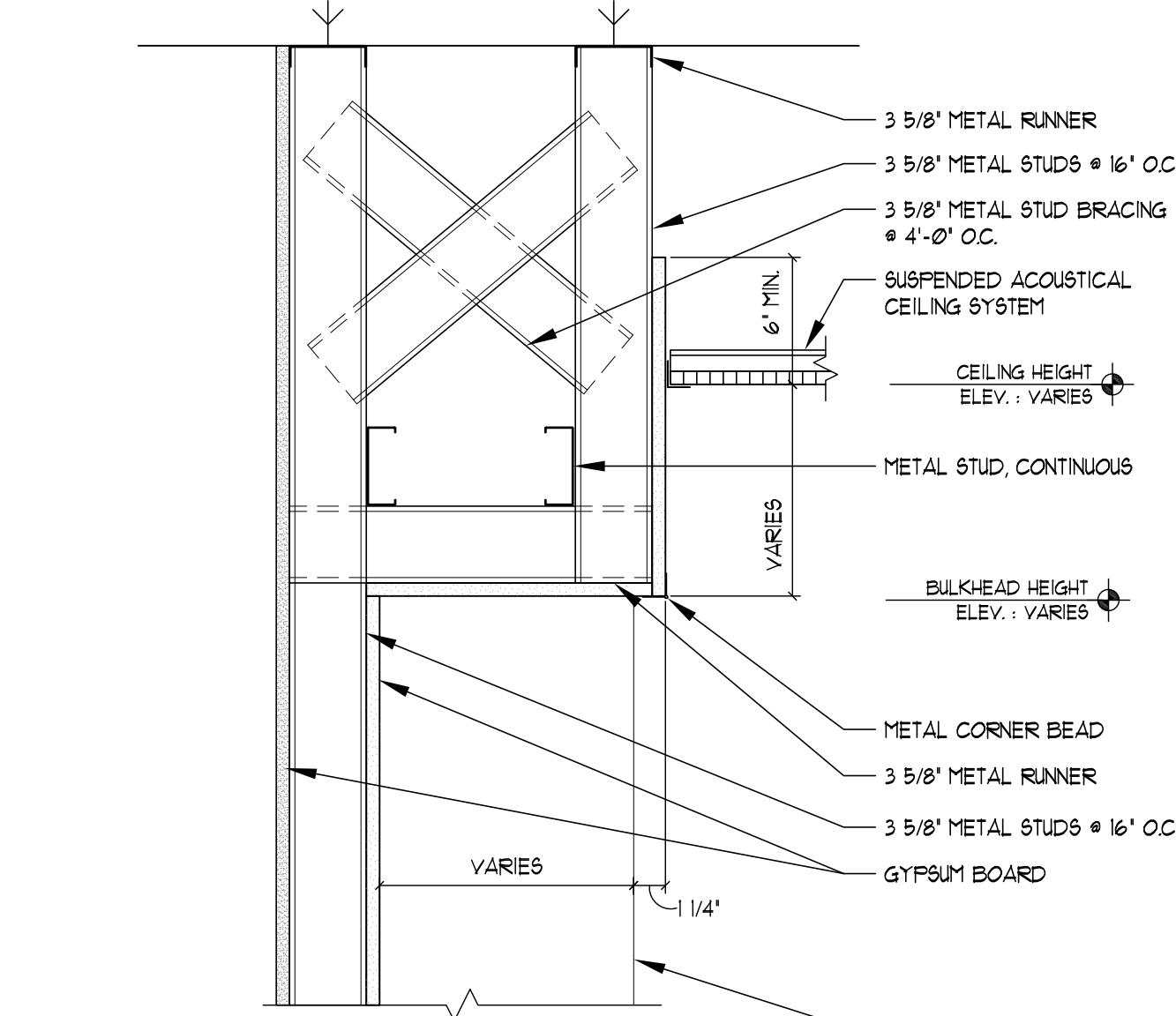
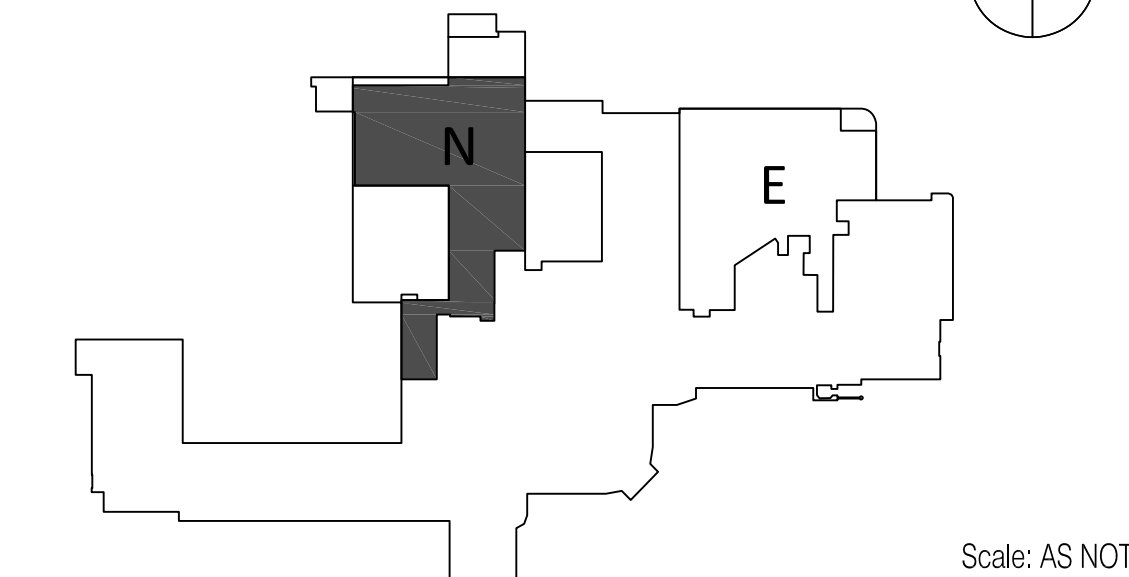
### REFLECTED CLG. PLAN SYMBOLS:

	2' x 2' SUSPENDED LAY-IN ACOUSTICAL CEILING (TYPICAL UNLESS OTHERWISE INDICATED)
	2' x 4' RECESSED LED FIXTURE
	2' x 2' RECESSED LED FIXTURE
	SPEAKER
	SMOKE DETECTOR
	HEAT DETECTOR
	EXIT LIGHT
	CEILING MOUNTED FIRE ALARM SIGNAL DEVICE
	WALL MOUNTED SCONCE
	RECESSED DOWNLIGHT FIXTURE
	RETURN AIR GRILLE (REFER TO MECHANICAL DRAWINGS)
	SUPPLY AIR DIFFUSER OR REGISTER (REFER TO MECHANICAL DRAWINGS)
	EXHAUST GRILLE (REFER TO MECHANICAL DRAWINGS)
	GYPSUM BOARD SOFFIT/BULKHEAD/CEILING
	BULKHEAD/CEILING HEIGHT (HEIGHT ABOVE FINISHED FLOOR AS NOTED)

### REFLECTED CEILING PLAN KEYNOTES:

- LINE OF EXISTING BUILDING TO REMAIN. PROTECT DURING NEW CONSTRUCTION.
- NO CEILING FINISH REQUIRED. REFER TO THE MECHANICAL AND ELECTRICAL DRAWINGS FOR SERVICES.
- ALIGN FACE OF SOFFIT/BULKHEAD WITH CORNER OF WALL CONSTRUCTION.
- EXHAUST LIGHT. SEE DETAIL 03/AS1.
- CUBICLE CURTAIN TRACK. REFER TO DETAIL 05/AS1.
- CEILING MOUNTED TRACK AND RAIL WITH SUPPORT ABOVE FOR BARIATRIC LIFT.
- CEILING MOUNTED SECURITY CAMERA.
- BARRIER FREE CEILING LIFT. GENERAL CONTRACTOR IS TO PROVIDE TRACK AND SUPPORT ABOVE CEILING. COORDINATE WITH VENDOR DRAWINGS. ACTUAL LOCATION SHALL BE COORDINATED WITH COR.
- ACCESS PANEL. REFER TO THE MECHANICAL, PLUMBING AND ELECTRICAL DRAWINGS FOR LOCATION OF VALVES, SWITCHES, DISCONNECTS, ETC.
- A ROW OF CUT TILES.
- PAINT FACE AND ALL SIDES OF BULKHEAD PT2, UNDERSIDE OF BULKHEAD SHALL BE PGBL.
- PAINT FACE AND ALL SIDES OF BULKHEAD PT4 UNDERSIDE PGBL.
- 24 X 24 66 ACCESS PANEL WITH TAMPER/SUICIDE RESISTANT LOCK.
- CENTER CAN LIGHT IN BULKHEAD.
- NEW PLUMBING CHASE. REFER TO PLUMBING DRAWINGS GC TO MINIMIZE CHASE SIZE.
- PAINT FACE AND ALL SIDES OF BULKHEAD PT3, UNDERSIDE OF BULKHEAD SHALL BE PGBL.
- PAINTED STEEL ACCESS PANEL.
- WINDOW SHUTTERS. REFER TO VENDOR DRAWINGS.
- PROVIDE CATEGORY 4 EXTREME DUTY GYPSUM.
- REWORK EXISTING SOFFIT AS REQUIRED TO INSTALL EMERGENCY SIGNAGE, EXTERIOR LIGHTING AND PATIENT LIFT SYSTEM. REPAIR AND REFINISH SOFFIT TO MATCH EXISTING SOFFIT.
- REMOVE AND REPLACE CEILING TILES FOR MEP WORK ABOVE CEILING AND ASBESTOS ABATEMENT WORK SHALL BE DONE AFTER HOURS OR ON WEEKENDS COORDINATE WITH COR.

### KEYPLAN: FIRST FLOOR



02 BULKHEAD DETAIL, TYP.  
SCALE: 1 1/2" = 1'-0"

<b>CONSULTANTS:</b>		<b>PROJECT MANAGERS AND ENGINEERS:</b>		<b>Drawing Title</b> REFLECTED CEILING PLAN - 1 NORTH		<b>Project Title</b> RENOVATE ED & PRIMARY CARE Phase I		<b>Project Number</b> 667-10-100		<b>Office of Construction and Facilities Management</b> Department of Veterans Affairs	
				<b>Approved: Project Director</b>		<b>Location</b> SHREVEPORT VAMC 510 EAST STONER AVE		<b>Building Number</b> 1N			
						<b>Date</b> 01/09/13		<b>Drawing Number</b> A5.N1			
						<b>Checked</b> JAH		<b>Drawn</b> CSH			
<b>Revisions:</b>		<b>Date</b>						<b>Dwg. 20 of 112</b>			

VA FORM 08-6231

The Estopinal Group  
820 Jordan Street, Suite 507  
Shreveport, LA 71101  
tel. 318.424.3700  
fax 318.424.3764

TNF A VETERAN OWNED COMPANY  
3 EXECUTIVE COURT, UNIT 4  
SOUTH BARRINGTON, IL 60010