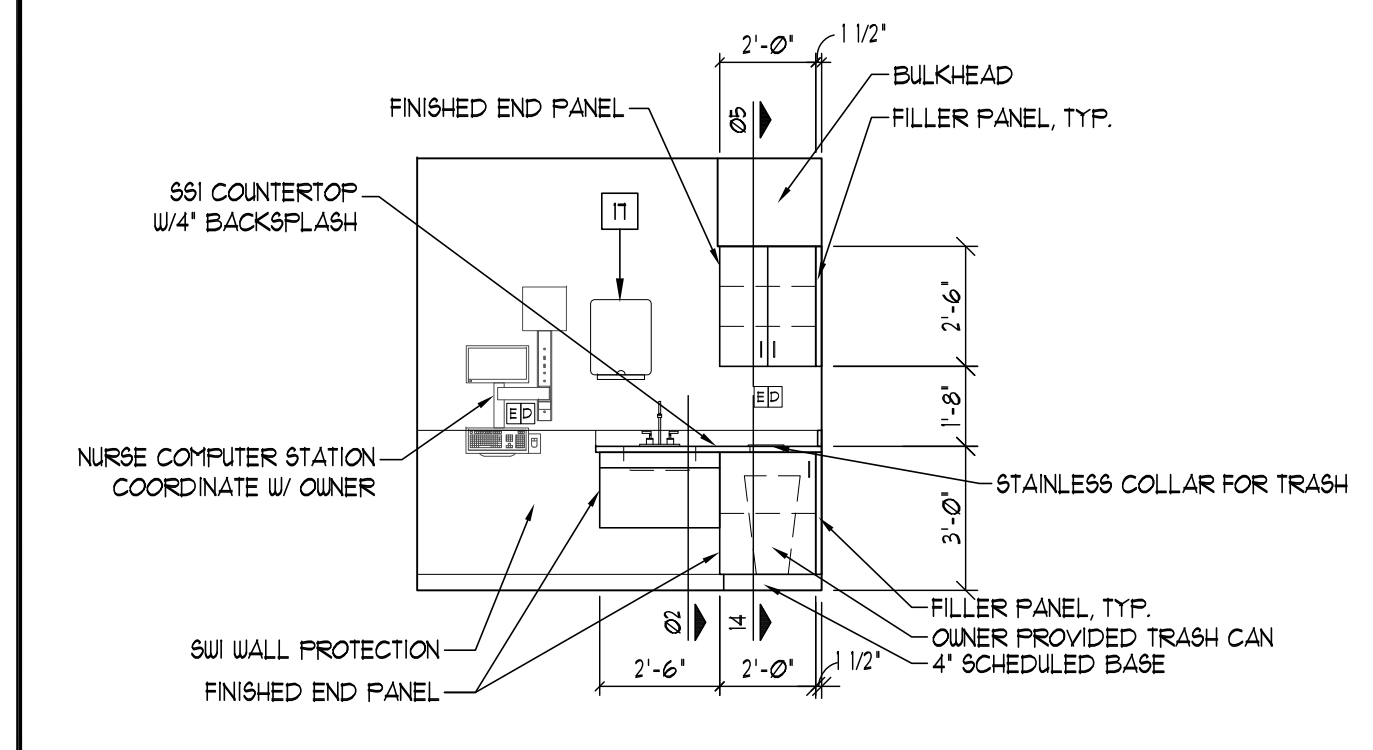
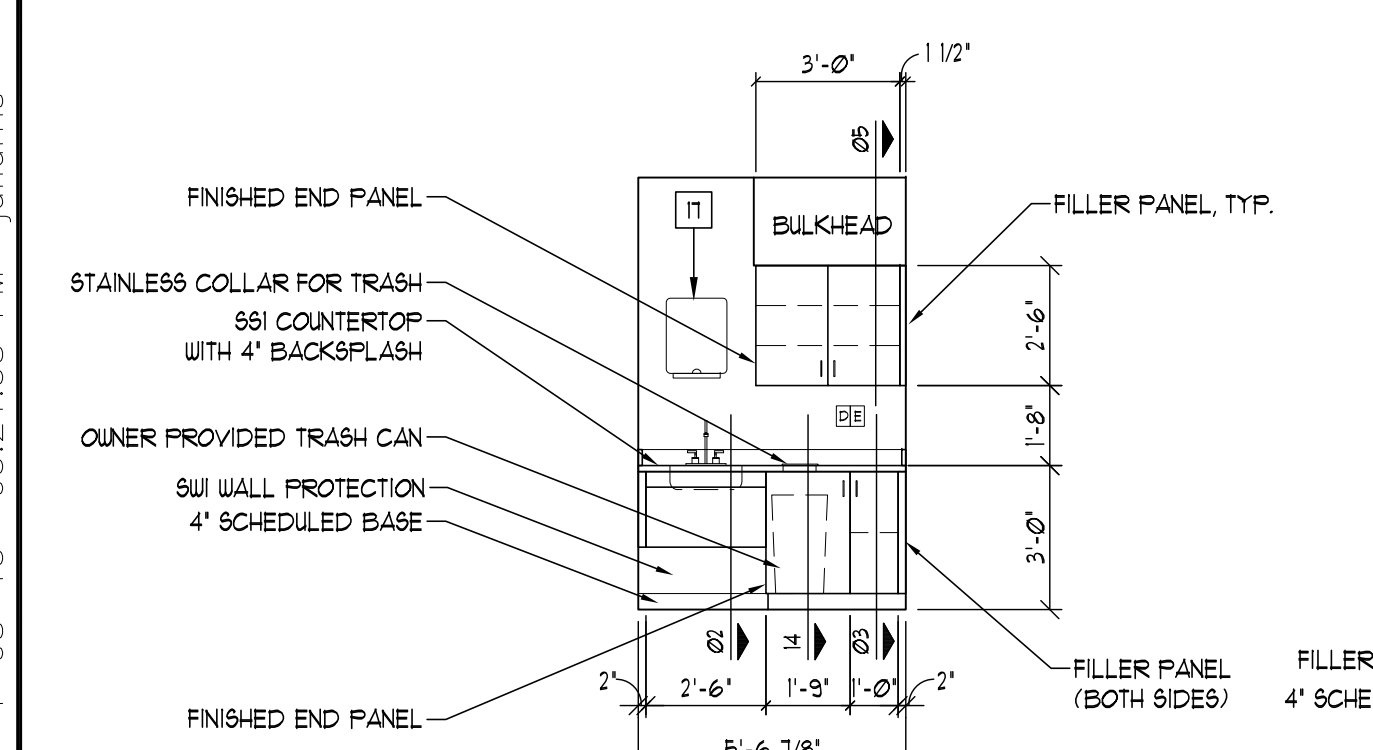


three inches = one foot
one and one half inches = one foot
one inch = one foot
three quarters inch = one foot
one half inch = one foot
one quarter inch = one foot
one eighth inch = one foot
one sixteenth inch = one foot

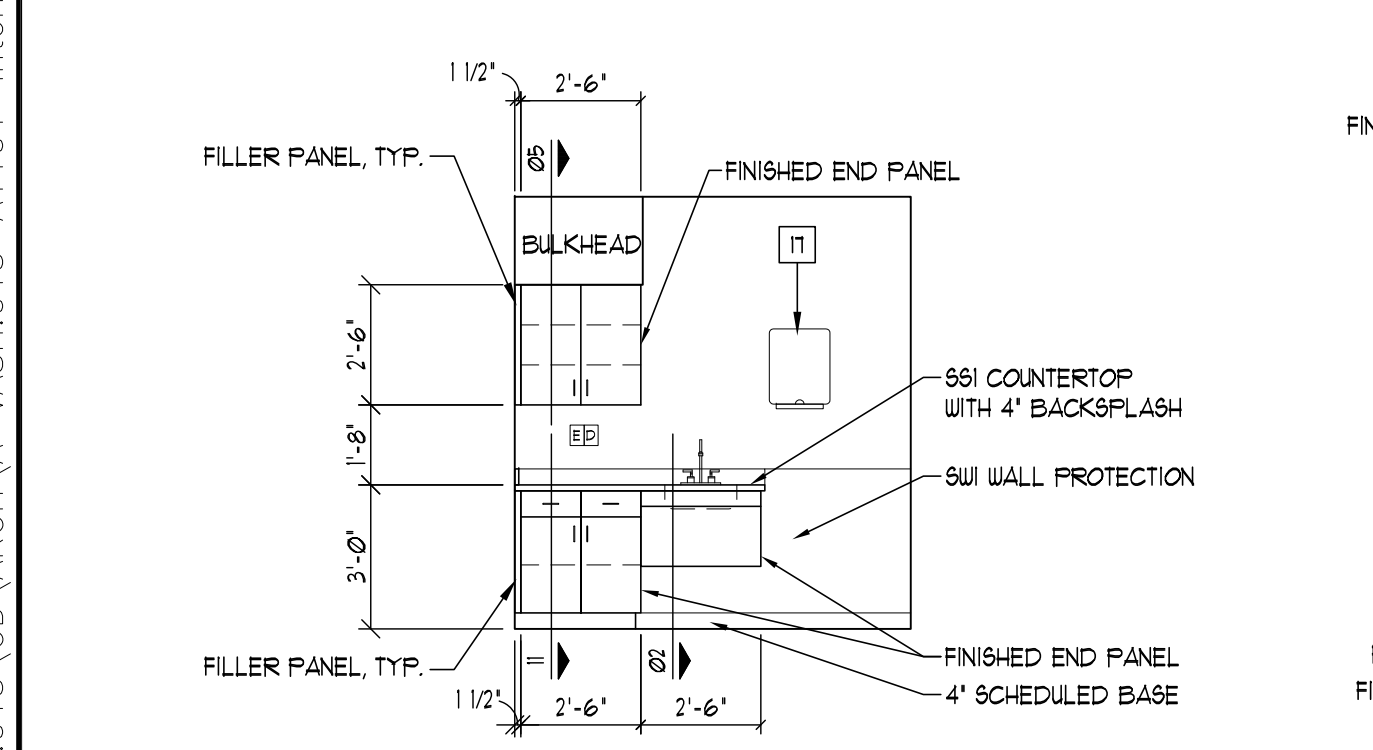
20 NURSE STATION IN19
INTERIOR ELEVATION
SCALE: 1/4"=1'-0"



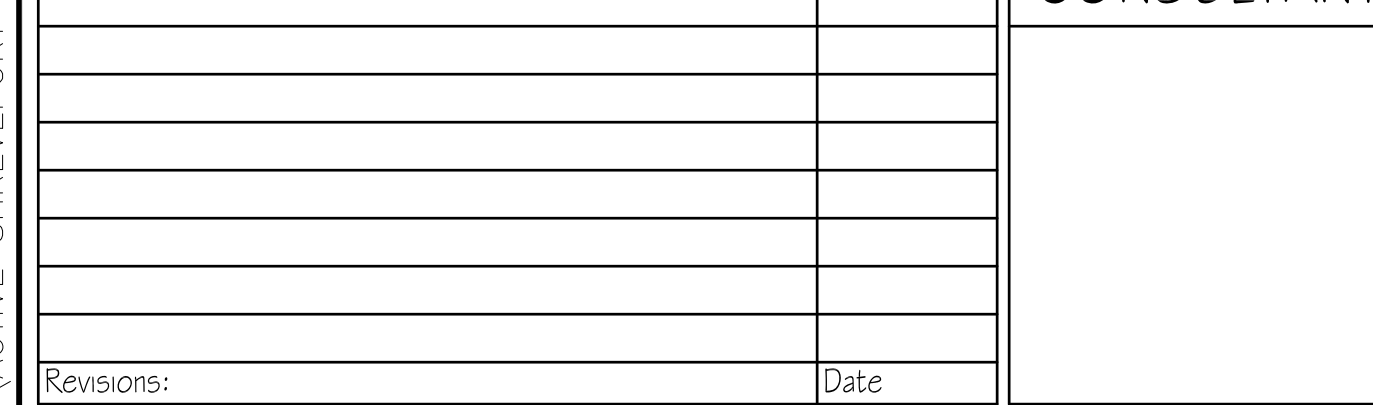
19 LIFE SUPPORT IN15
INTERIOR ELEVATION
SCALE: 1/4"=1'-0"



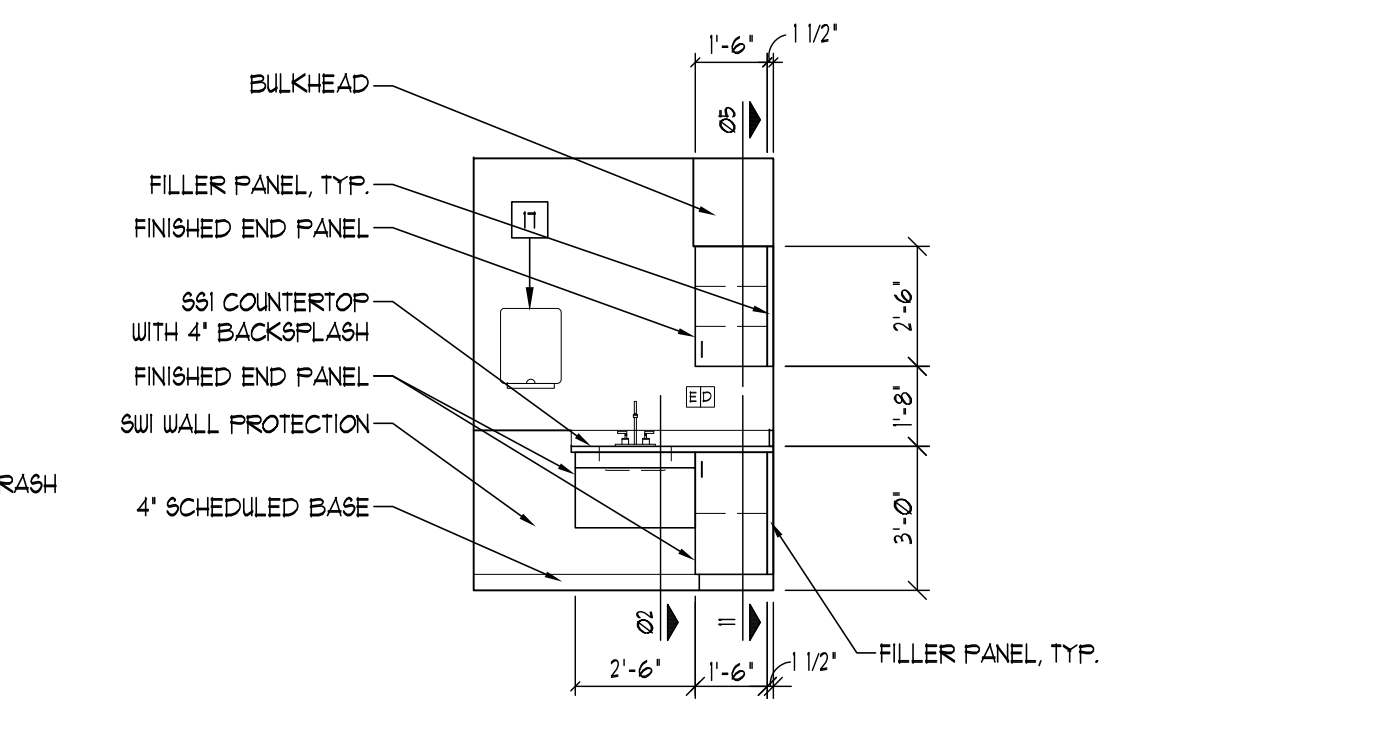
18 LIFE SUPPORT IN14
INTERIOR ELEVATION
SCALE: 1/4"=1'-0"



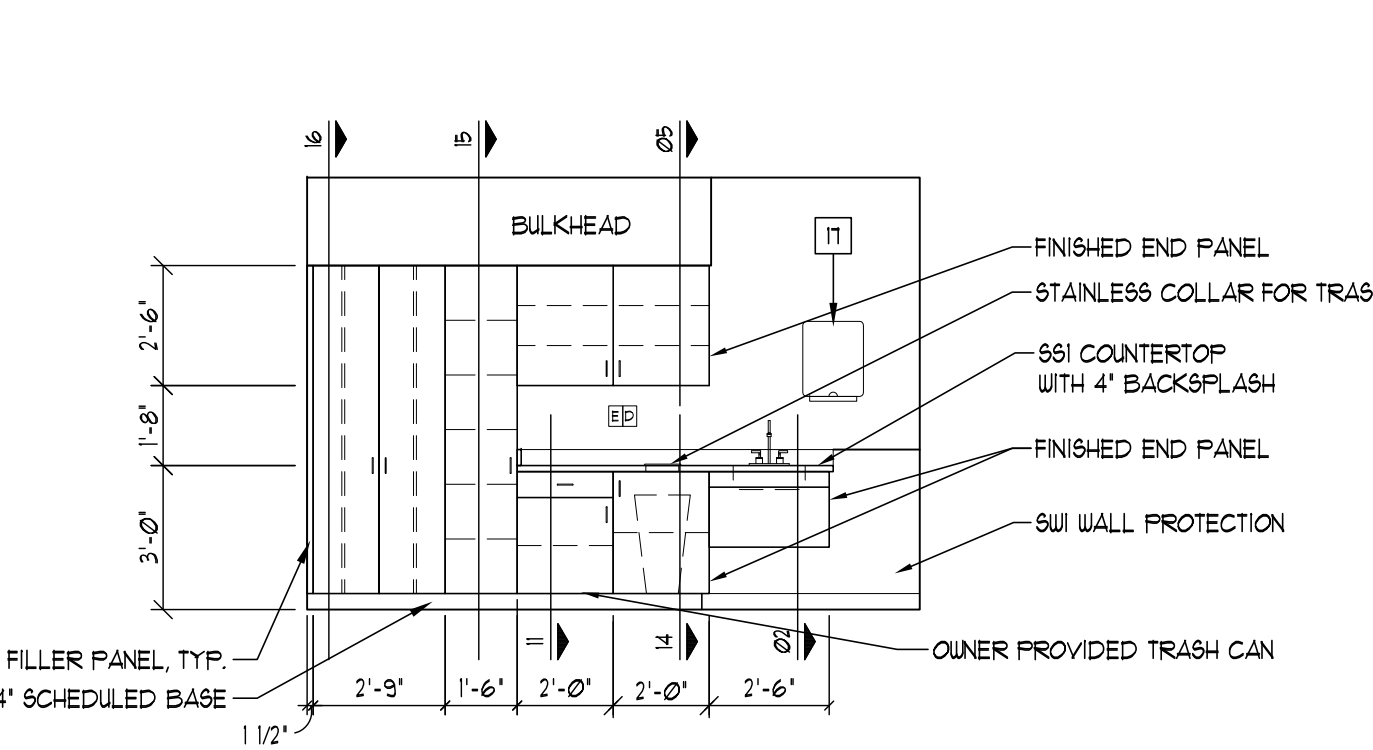
17 LIFE SUPPORT 3 IN13
INTERIOR ELEVATION
SCALE: 1/4"=1'-0"



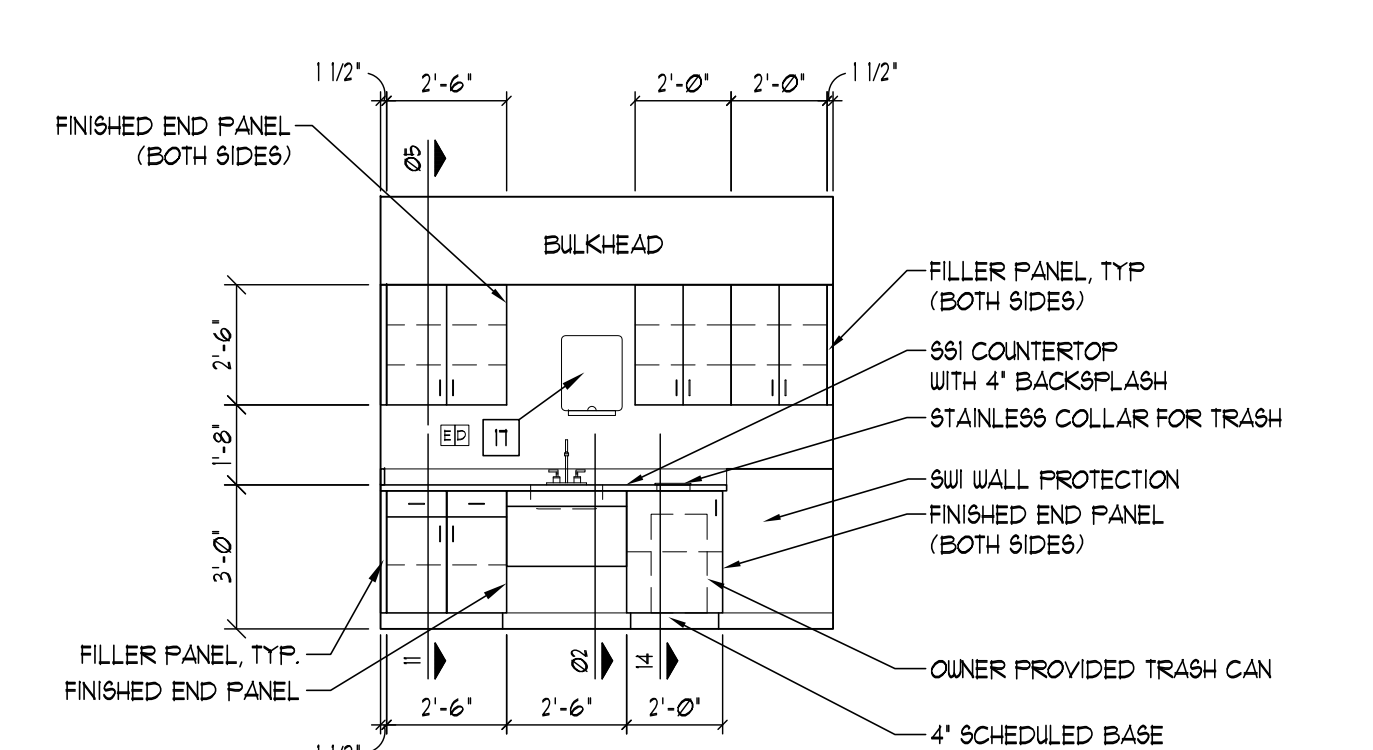
16 LIFE SUPPORT 4 IN12
INTERIOR ELEVATION
SCALE: 1/4"=1'-0"



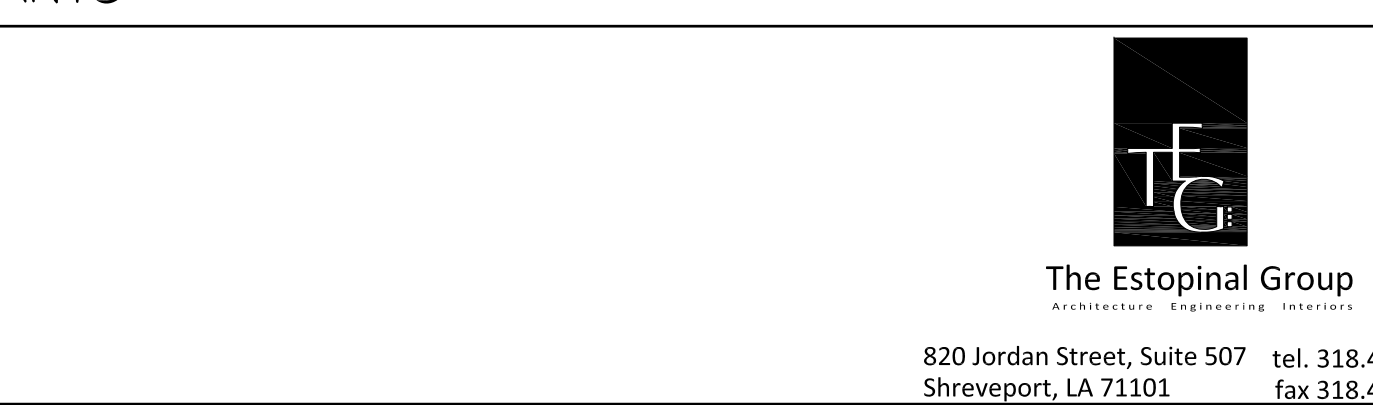
15 LIFE SUPPORT 5 IN11
INTERIOR ELEVATION
SCALE: 1/4"=1'-0"



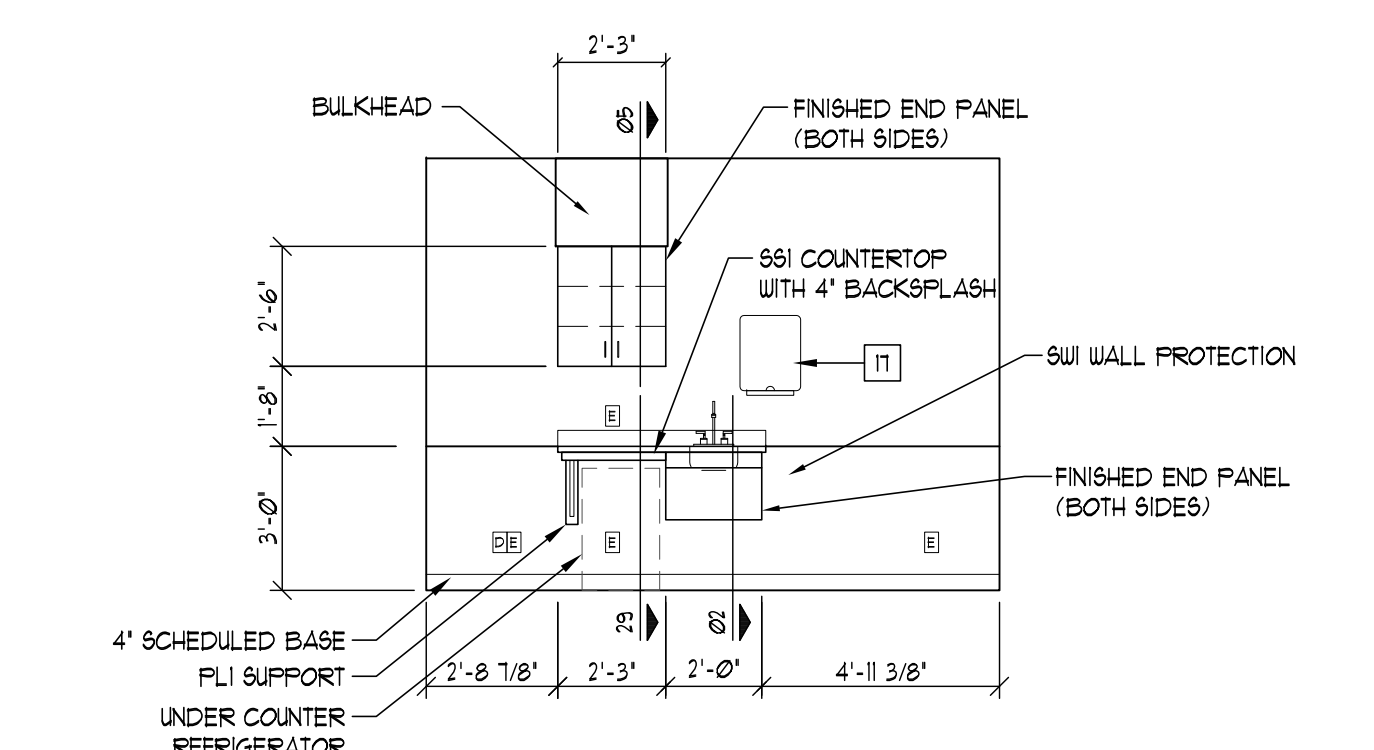
14 CAST LIFE SUPPORT 6 IN10
INTERIOR ELEVATION
SCALE: 1/4"=1'-0"



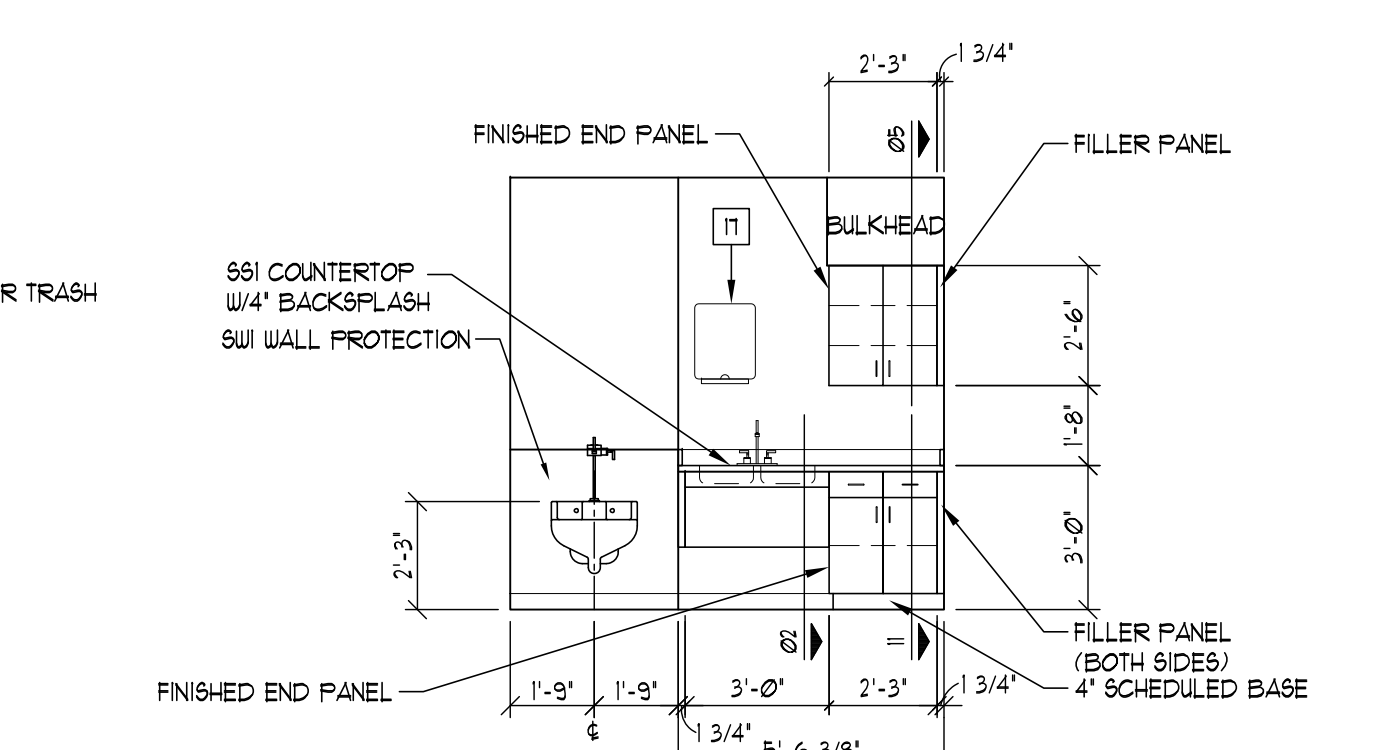
13 LIFE SUPPORT 7 IN9
INTERIOR ELEVATION
SCALE: 1/4"=1'-0"



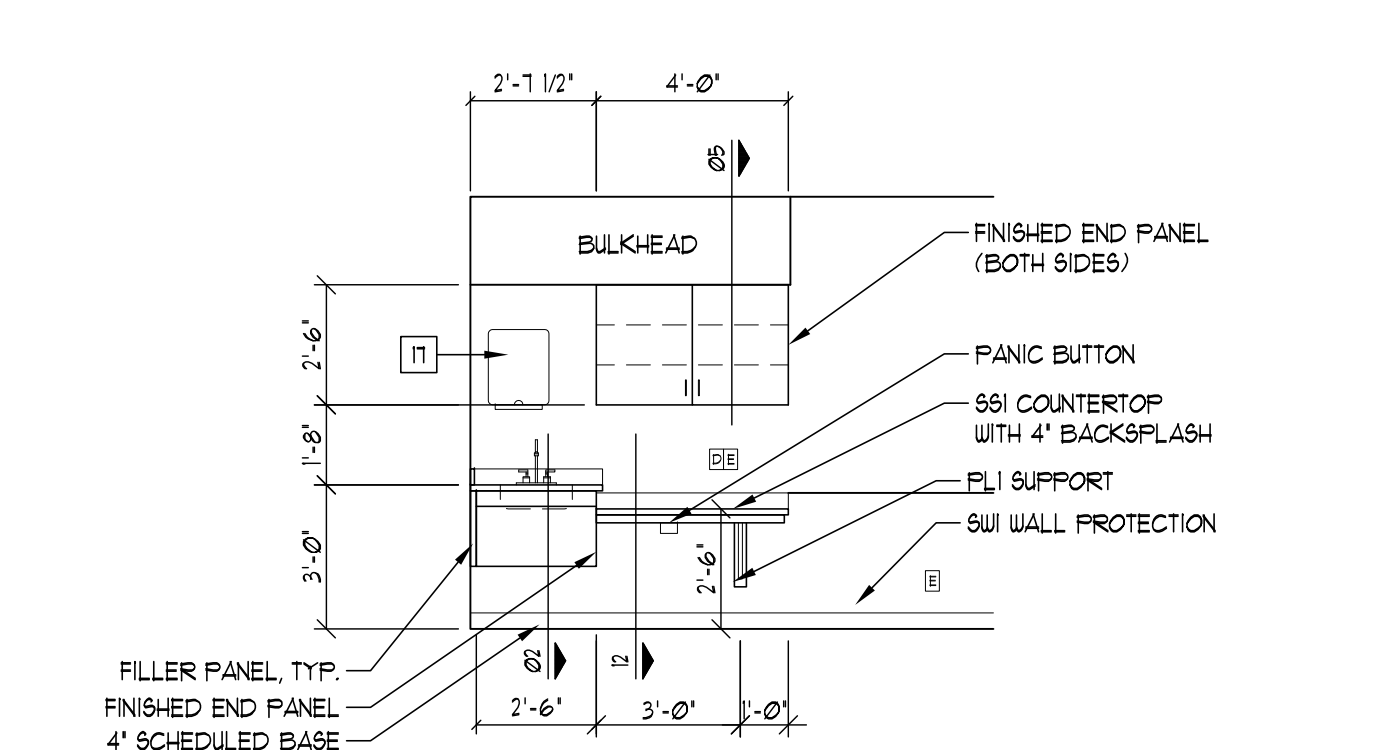
12 LIFE SUPPORT 8 IN8
INTERIOR ELEVATION
SCALE: 1/4"=1'-0"



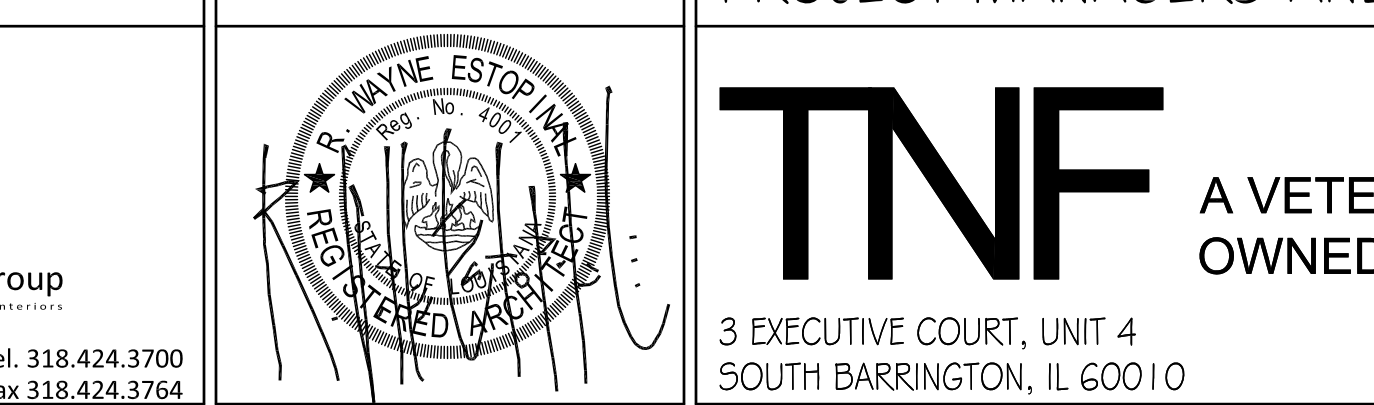
11 MEDS IN20
INTERIOR ELEVATION
SCALE: 1/4"=1'-0"



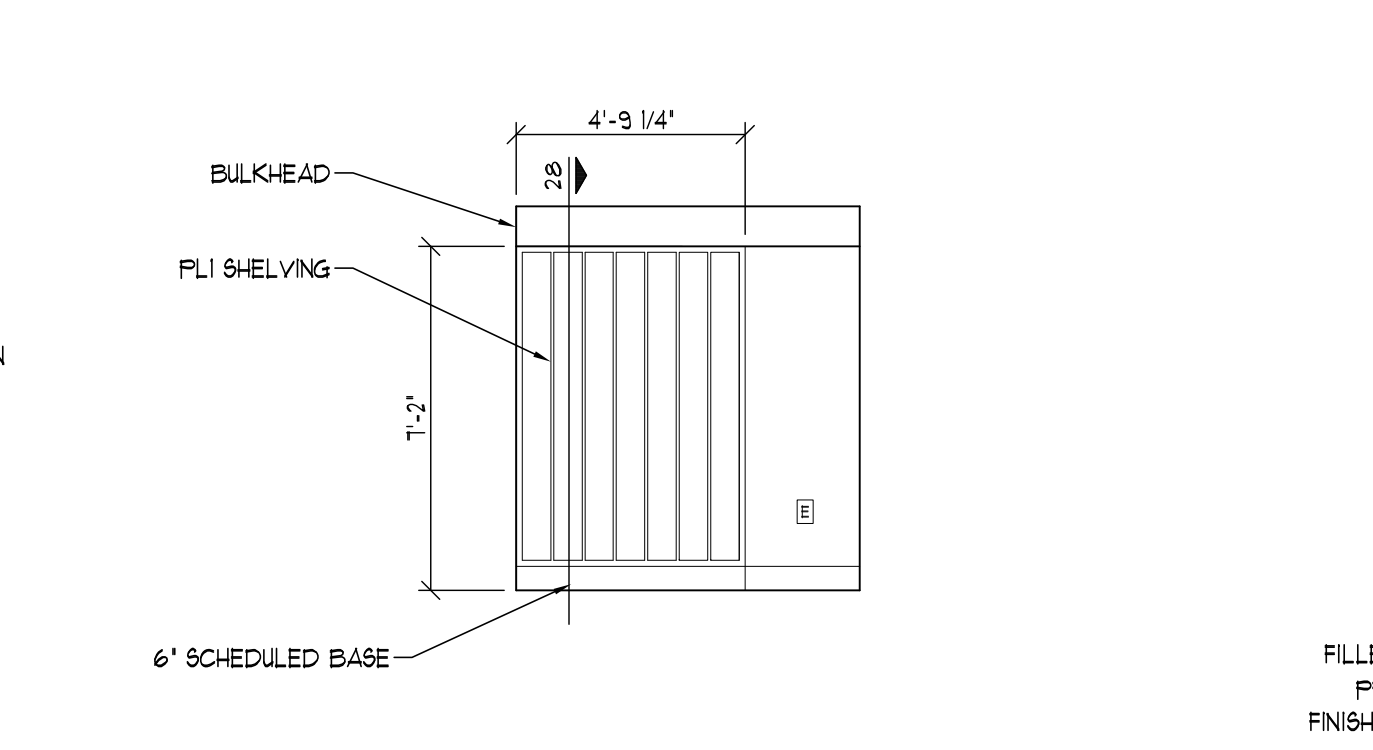
10 SOILED UTILITY IN23
INTERIOR ELEVATION
SCALE: 1/4"=1'-0"



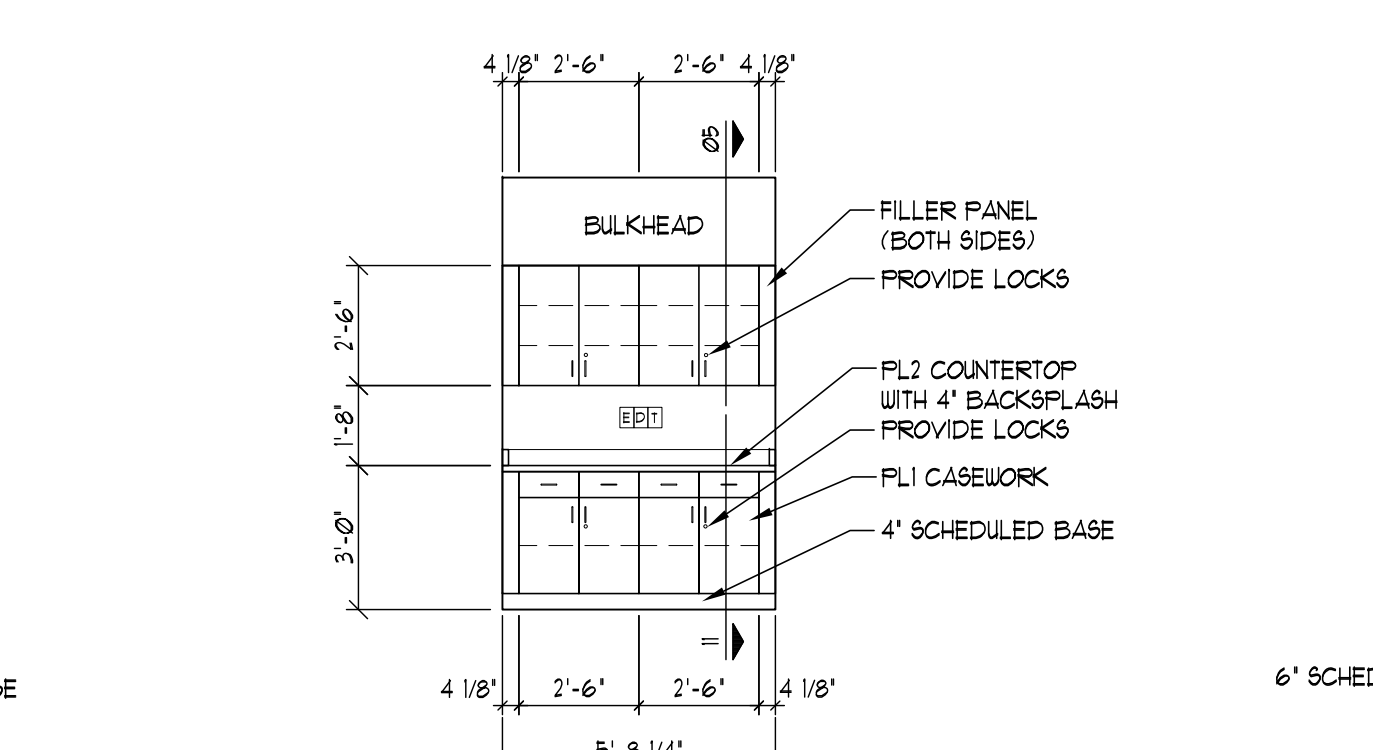
09 TRIAGE 2 IN22
INTERIOR ELEVATION
SCALE: 1/4"=1'-0"



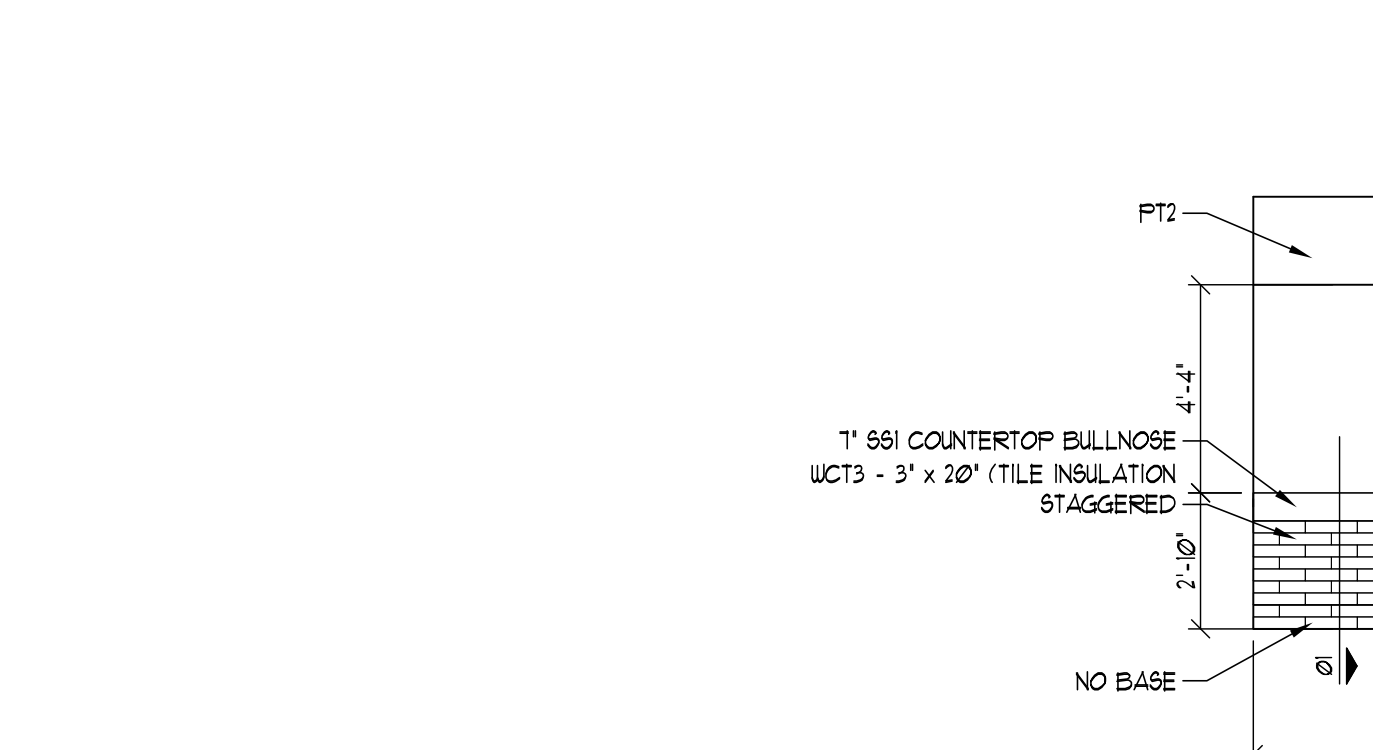
08 TRIAGE 1 IN21
INTERIOR ELEVATION
SCALE: 1/4"=1'-0"



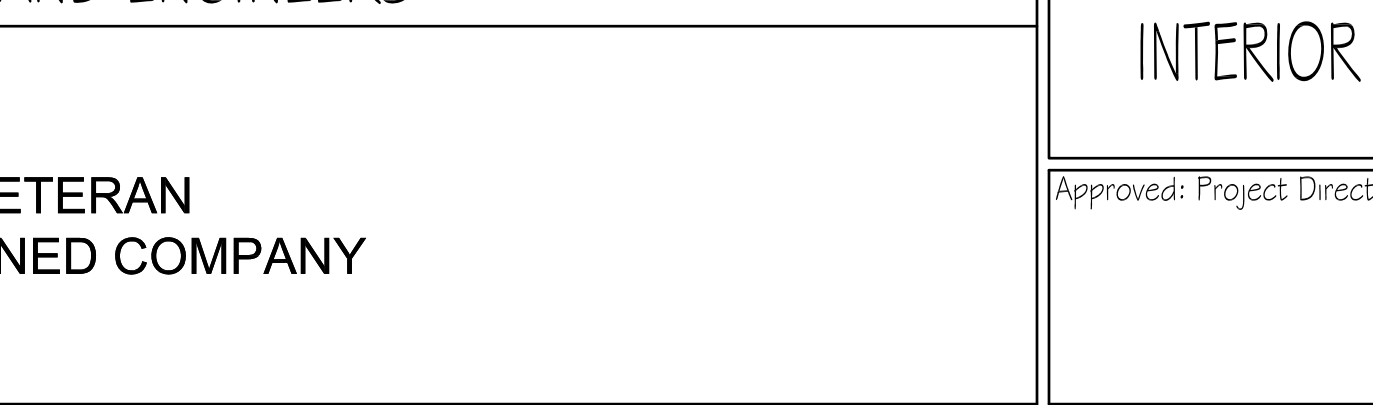
07 AMBULANCE VESTIBULE 200A
INTERIOR ELEVATION
SCALE: 1/4"=1'-0"



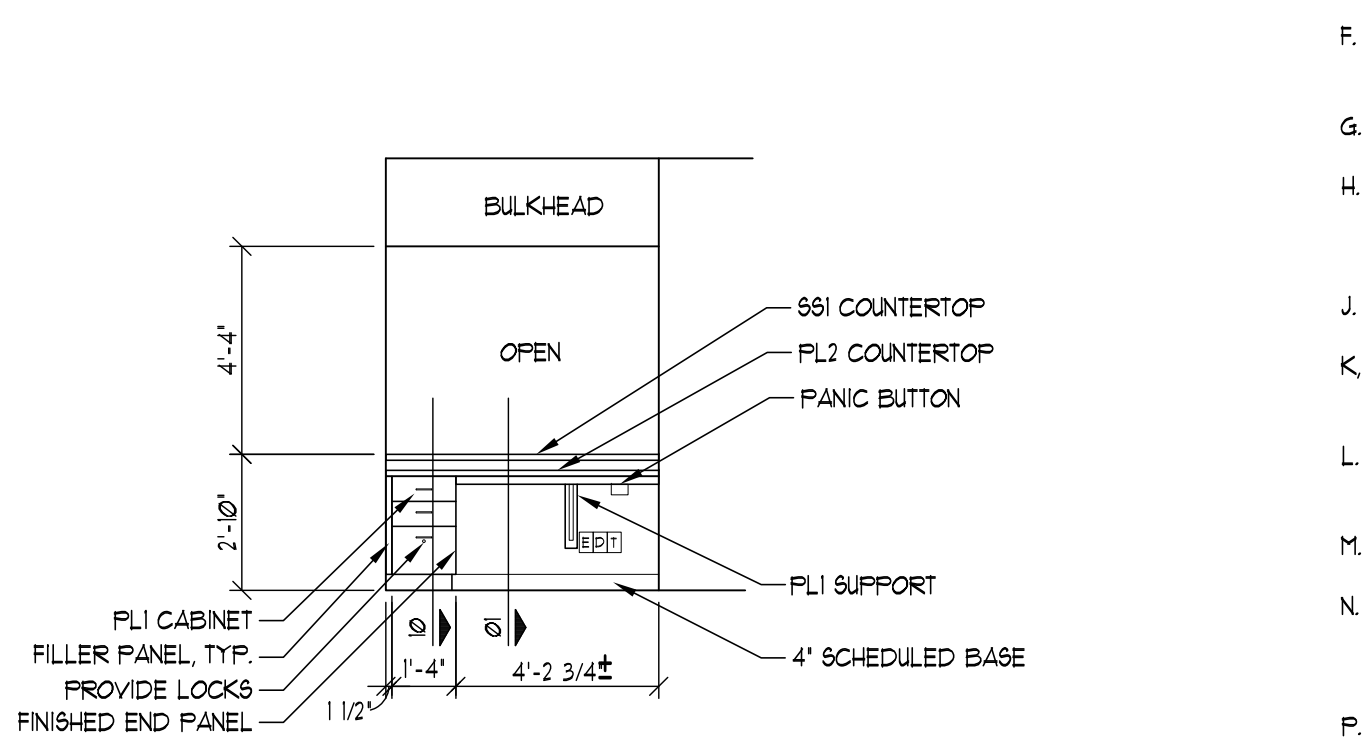
06 REGISTRATION 1N7
INTERIOR ELEVATION
SCALE: 1/4"=1'-0"



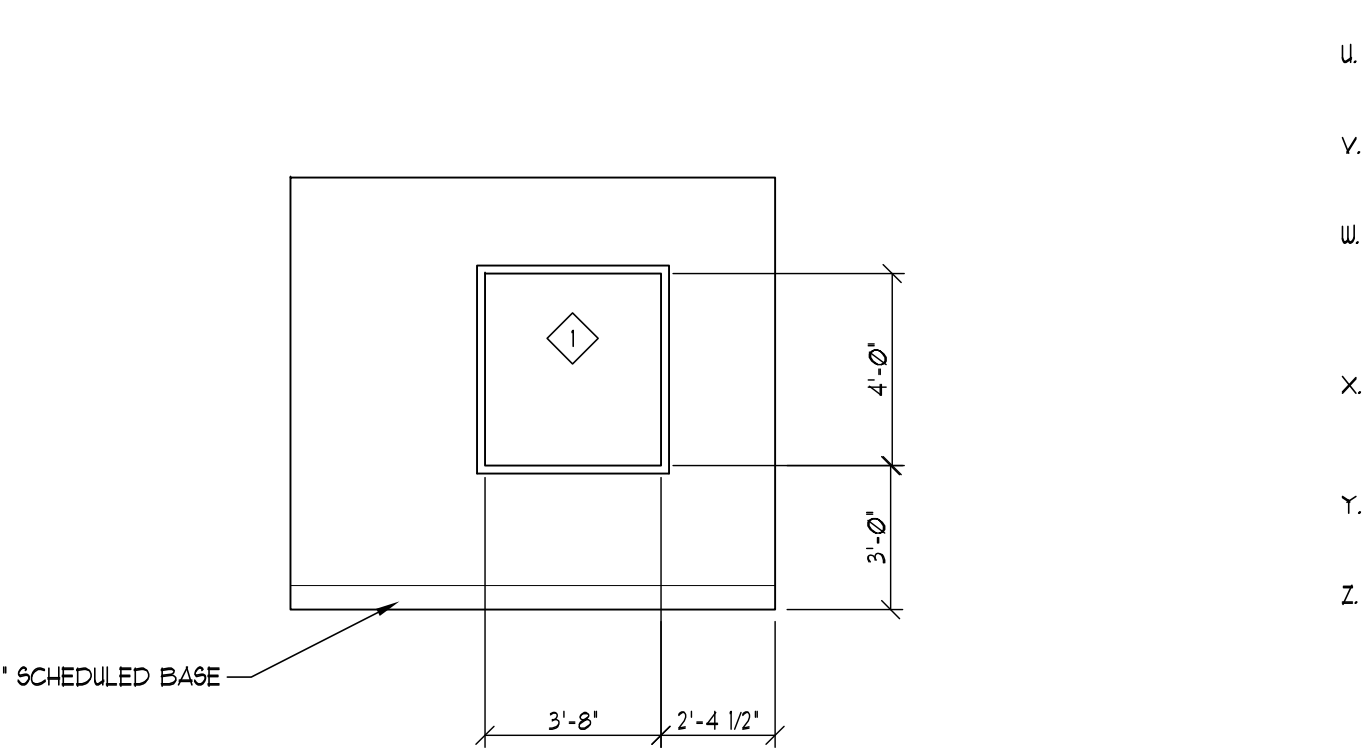
05 RESERVED
SCALE: 1/4"=1'-0"



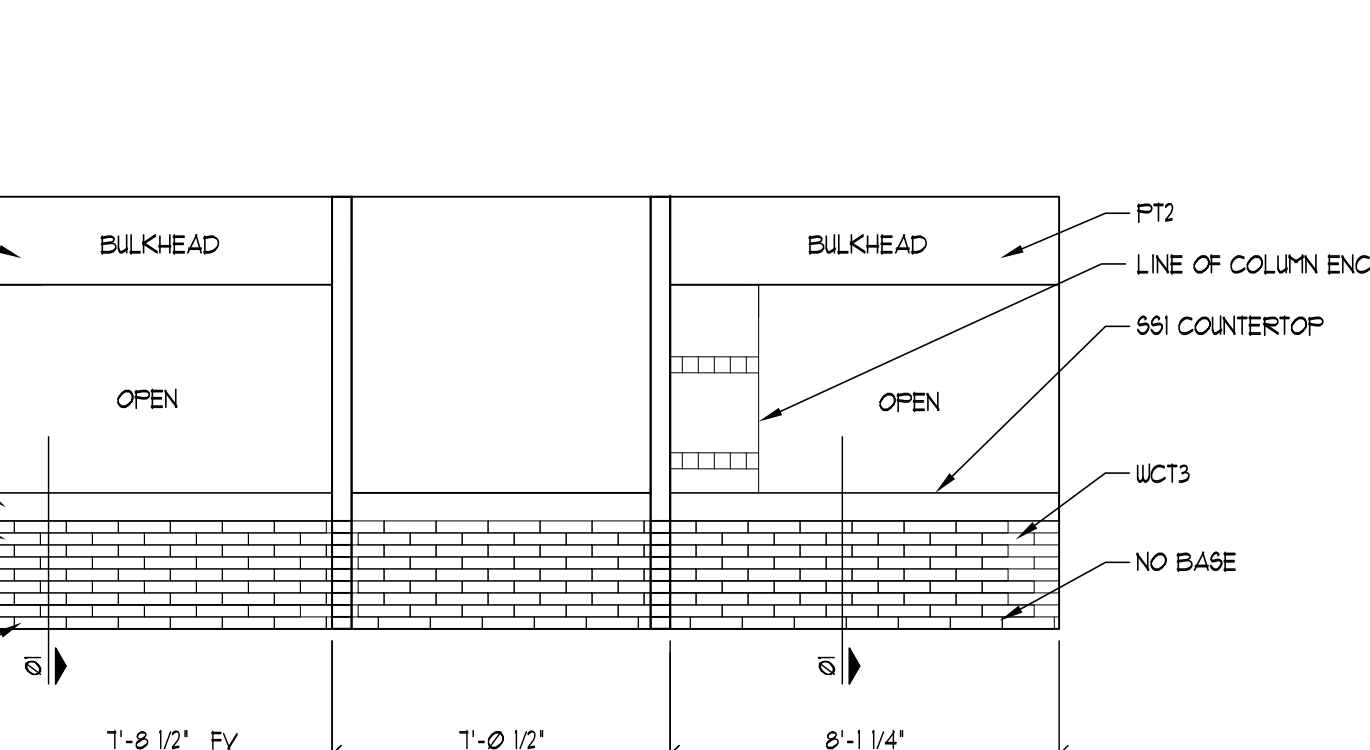
04 REGISTRATION 1N7
INTERIOR ELEVATION
SCALE: 1/4"=1'-0"



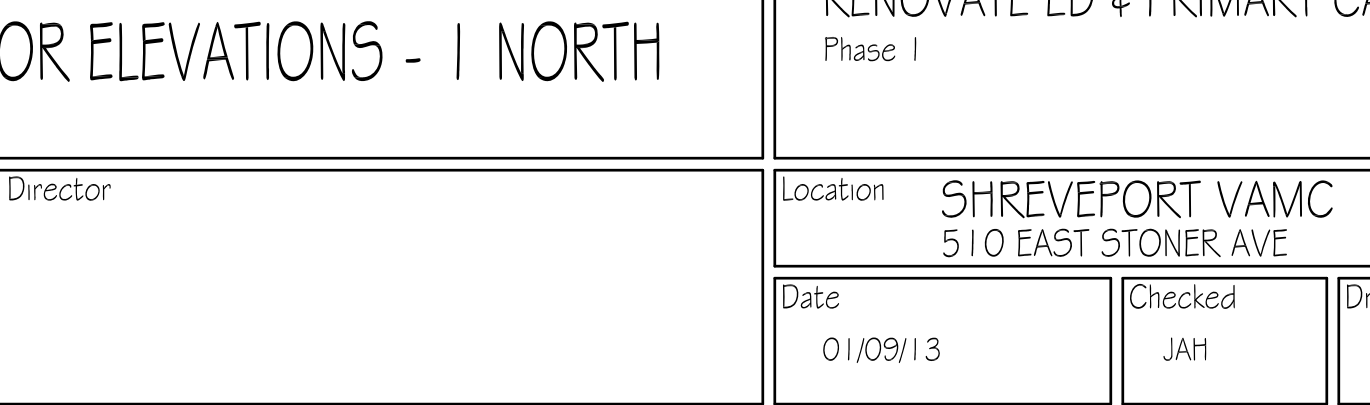
03 REGISTRATION 1N7
INTERIOR ELEVATION
SCALE: 1/4"=1'-0"



02 WAITING 1N6
INTERIOR ELEVATION
SCALE: 1/4"=1'-0"



01 REGISTRATION 1N7 / CORRIDOR 100B
INTERIOR ELEVATION
SCALE: 1/4"=1'-0"



SYMBOLS/SYSTEMS LEGEND:

MEDICAL GASES:	ELECTRICAL:	OTHER:
A MEDICAL AIR	D DATA	4 TOILET ACCESSORY REFER TO THE A1 SERIES
N OXYGEN	E ELECTRICAL OUTLET	
NO NITROGEN	F FAX	
NO NITROUS	NC NURSE CALL	
V VACUUM	CB CODE BLUE STATION	
S SLIDE	LS LIGHT SWITCH	
	ES EMERGENCY (TOILETS, SHOWERS, TUBS)	

GENERAL INTERIOR ELEVATION
INSTALLATION NOTES:

- ALL CASEWORK SHALL BE MANUFACTURED IN ACCORDANCE WITH ARCHITECTURAL WOODWORK INSTITUTE CUSTOM GRADE SPECIFICATIONS.
- REFER TO THE INTERIOR ELEVATIONS, CASEWORK SECTIONS AND ARCHITECTURAL FLOOR PLANS FOR LOCATION OF CASEWORK.
- ALL COUNTERTOPS TO BE A MINIMUM OF 2'-0" DEEP UNLESS NOTED OTHERWISE.
- ALL HORIZONTAL COUNTERTOPS AND SOLID SURFACES SHALL BE 1/8" THICK PLASTIC LAMINATE ON 1/2" THICK 45 LB DENSITY PARTICLE BOARD WITH 200 GRADE 600 BALANCING INTERIOR.
- COUNTERTOPS SHALL BE INSTALLED WITH A 4" HIGH BACKSPASH SCRIBED TO WALL AT BACK END CAPS OF COUNTERTOP WITHOUT EXPOSED FASTENERS. ALL END CAPS ARE TO BE SET IN A BED OF SEALANT.
- PROVIDE LEDGERS SECURED TO WALL MOUNTED BLOCKING WHERE REQUIRED TO SUPPORT COUNTERTOPS WITHOUT BASE CABINETS.
- PROVIDE TWO PART SEALANT TO MATCH COLOR OF COUNTERTOP.
- PROVIDE GROMMET HOLES AT DATA PHONE AND POWER DROPS. REFER TO ELECTRICAL DRAWINGS. VERIFY LOCATION WITH OWNER. PROVIDE PLASTIC GROMMET COVER. SUBMIT COVER TO INTERIOR DESIGNER FOR APPROVAL.
- ALL EXTERNAL EXPOSED COUNTERTOPS SHALL HAVE 2" RADIUS CORNERS.
- PROVIDE SOLID SURFACE MATERIAL AT ALL WINDOW STOOLS. REFER TO THE ID SERIES FOR FINISHES AND MATERIALS.
- PROVIDE MARINE GRADE PLYWOOD AT ALL COUNTERTOPS WITH SINKS OR DRAINS LOCATED WITHIN THE ENTIRE COUNTERTOP CONFIGURATION.
- ALL BASE CABINETS ARE TO BE A MINIMUM OF 2'-0" DEEP UNLESS NOTED OTHERWISE.
- ALL CABINET DOORS AND EXPOSED VERTICAL PANELS SHALL BE 1/2" THICK PLASTIC LAMINATE ON 3/4" THICK 45 LB DENSITY PARTICLE BOARD WITH 205 MELAMINE INTERIOR LINER.
- ALL CASEWORK BACKBOARD SHALL BE 3/8" THICK 45 LB DENSITY PARTICLE BOARD WITH 205" THICK MELAMINE INTERIOR LINER.
- ALL DRAWERS SHALL HAVE FRONT PANELS OF 1/2" THICK PLASTIC LAMINATE ON ALL EXPOSED SURFACES ON 3/4" 45 LB DENSITY PARTICLE BOARD WITH 205" THICK MELAMINE INTERIOR LINER. DRAWER SIDE SHALL BE 1/2" THICK PARTICLE BOARD WITH 205" THICK MELAMINE INTERIOR LINER.
- ALL SHELVES ARE ADJUSTABLE UNLESS NOTED OTHERWISE.
- ALL WALL CABINETS ARE TO BE MINIMUM 1'-1 1/2" INSIDE CLEAR UNLESS NOTED OTHERWISE.
- ALL SHELVES LOCATED INSIDE CABINETS SHALL BE 3/4" THICK 45 LB DENSITY PARTICLE BOARD WITH 205" THICK MELAMINE INTERIOR LINER.
- ALL SHELVES EXCEEDING 32" SPAN AND UP TO 42" SPAN SHALL BE 1" THICK. FOR SPANS UP TO 48", SHELVES SHALL BE 1 1/2" THICK.
- CASEWORK MANUFACTURER SHALL COORDINATE THE INSTALLATION OF SINKS AND PLUMBING FIXTURES PRIOR TO THE INSTALLATION OF CASEWORK.
- SEAL ALL CRACKS ON INTERIOR AND/OR EXPOSED SURFACE OF CABINETS, INCLUDING RETURN ABOVE KICKBOARD TO PREVENT THE PASSAGE OF INSECTS. ADJACENT PIECES OF CASEWORK SHALL BE TIGHTLY FITTED TOGETHER WITHOUT GAPS.
- PROVIDE FILLER PANELS AS REQUIRED. 1/2" MINIMUM NOT TO EXCEED 3' AT WALLS AND CORNER CABINET JUNCTURES TO ALLOW PROPER DOOR AND DRAWER OPERATION.
- REFER TO THE INTERIOR ELEVATIONS FOR THE LOCKS. REFER TO ID SHEETS FOR PLASTIC LAMINATE COLORS AND OTHER MATERIALS.
- FIELD VERIFY ALL EQUIPMENT SIZES PRIOR TO FABRICATION OF CASEWORK.